

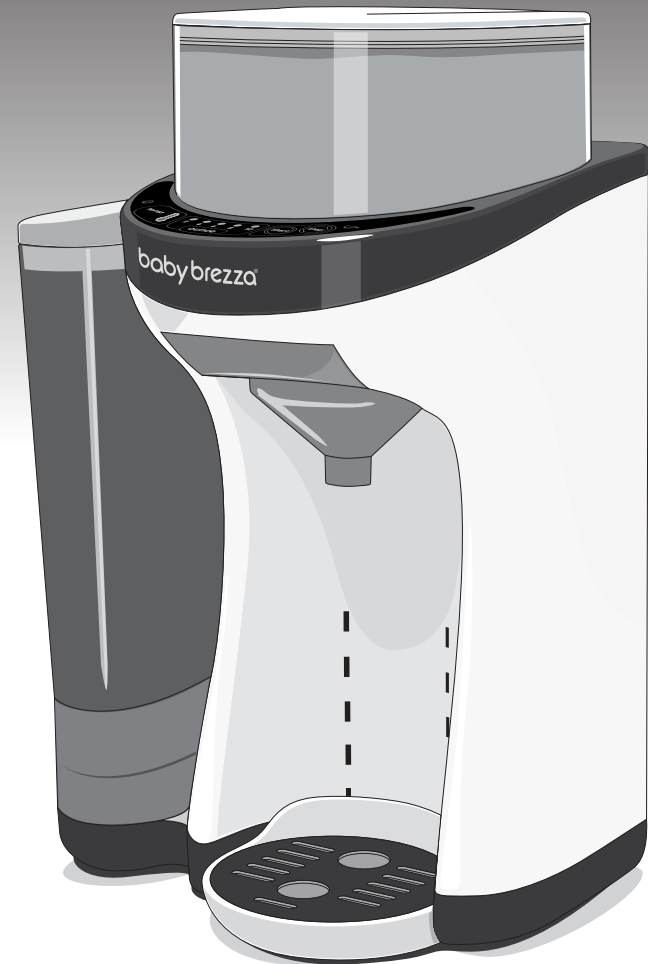
babybrezza®

Please visit
www.babybrezza.com
For tips, accessory products and more.

This product may be covered under one or more of the following including
U.S. Patent No. 8,584,901 and pending patent application(s) in the U.S. and other countries.

©2014 Baby Brezza Enterprises LLC

Formula Pro®



babybrezza®

Instructions

Important Safeguards

When using electrical appliances, basic safety precautions should always be followed, including the following:

1. Read all instructions before using.
2. Do not touch hot surfaces.
3. To protect against electric shock and injury to persons do not immerse cord, plug, water tank or appliance in water or other liquid.
4. Close supervision is necessary when any appliance is used by or near children.
5. Unplug from outlet when not in use and before cleaning. Allow to cool before inserting or removing parts, and before cleaning the appliance.
6. Do not operate this appliance with a damaged cord or plug. If the appliance malfunctions or has been damaged in any manner, Return appliance to the nearest authorized service facility for examination, repair or adjustment.
7. The use of accessory attachments not recommended by the appliance manufacturer may cause fire, electric shock or injury.
8. Use on level surface and be sure there is no debris under the unit and the rubber pads are touching the surface.
9. Household use only. Do not use outdoors.
10. Do not let cord hang over edge of table or counter, or touch hot surfaces.
11. Do not place on or near hot gas or electric burner, or in a heated oven.
12. Do not use appliance for other than intended use.
13. Do not attempt to use the machine without water in the water tank.
14. This appliance has a polarized plug (one blade wider than the other). To reduce risk of electric shock, this plug is intended to fit into a polarized outlet only one way. If the plug does not fit fully into the outlet, reverse the plug. If it still does not fit, contact a qualified electrician. Do not attempt to modify the plug in any way.
15. Make sure machine is turned off before unplugging.
16. A short power-supply cord is provided to reduce risks of becoming entangled in or tripping over a longer cord. Longer detachable power-supply cords or extension cords are available and may be used if care is exercised in their use. If using the machine with an extension cord, make sure the cord is the proper electrical rating for the machine. The extension cord should be arranged so that it does not drape over countertop or tabletop where it can be pulled on by children or tripped over unintentionally.
17. Before serving make sure formula mixture is at safe temperature for baby.
18. Avoid contact with moving parts. Never remove powder container, powder container lid, funnel or water tank while machine is in operation.
19. Do not disassemble.

Warning:

For infants less than 6 months old, always use bottled water suitable for infant formula preparation. Tap water and/or unsterilized baby bottles can potentially lead to adverse effects for the health of your baby. Only prepare one bottle at a time, feed immediately and follow all instructions carefully. Do not keep leftover formula mix. Always hold baby while feeding. Leaving baby unattended may cause choking.

TECHNICAL DATA

Supply voltage: 120V ~ 60Hz

Model: FRP0045

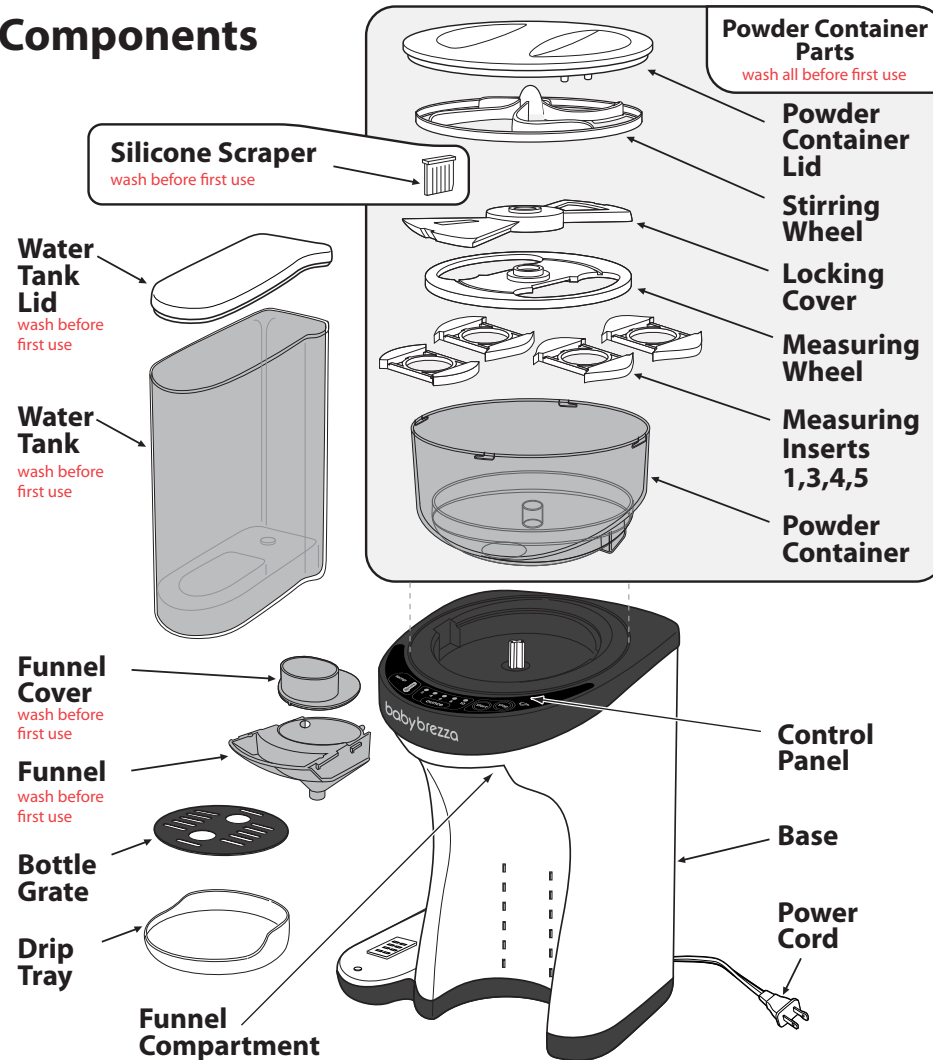
Current: 2.5A

Heater Power: 250W

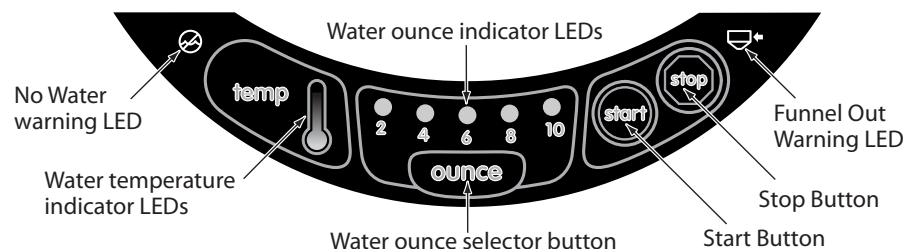
Motor Power: 20W

Save these instructions

Components



Controls & Indicator Lights



Set up - Before First Use

Wash: Funnel, Funnel Cover, Inside of Water Tank, and all Powder Container parts. (see page 2).
Do not put the Powder Container or any of the Powder Container parts in the dishwasher.

⚠ After washing, make sure all Powder Container parts are COMPLETELY DRY before assembly.

Assemble:

1 Select measuring insert by powder type
See next page for details

Inserts are numbered 1, 3, 4 and 5. Do not use the Measuring Wheel without an insert.

Press selected insert into bottom of Measuring Wheel.

2 Place Powder Container on top of Base and Insert Measuring Wheel.

3 Insert Locking Cover and turn to lock under tabs in Powder Container.

⚠ Make sure Silicone Scraper is installed correctly and does not protrude through the hole in the powder container after assembly. See separate Silicone Scraper instructions for more details.

4 Turn the Measuring Wheel to the position shown at left, with the small arrows on the Measuring Wheel & Powder Container aligned.

⚠ After steps 2 & 3

Top View Front

5 Insert Stirring Wheel.

don't add powder.

6 Place Lid as shown below. turn to lock.

⚠ make sure tab on lid is on the back corner of machine.

Rinse internal parts:

With Powder Container assembled follow these steps to rinse internal parts.

1 Fill Water Tank to MAX line with room temp. Purified Water.

don't add powder.

2 Plug in machine and turn power switch to on position.

3 Choose 10 oz. size by pressing ounce button 4 times.

4 Place 10 ounce or larger container to catch water.

Press start to begin rinsing.

The machine will stop after dispensing 10oz of water. Dispose of the water captured in the container. The Formula pro is now ready to use. **Follow the instructions on pages 5 & 6 for bottle preparation.**

Measuring Insert Selection

Find your formula type below and place indicated insert in measuring wheel.

Formula Brand/Type	Insert #	Formula Brand/Type	Insert #
Similac®		Earth's Best Organic®	
Advance®	4	Infant	3
Advance® Organic	4	Sensitivity®	4
Alimentum®	4	Soy	3
Go & Grow®	4	Baby's Only Organic®	
Go & Grow® Soy	5	Dairy	4
NeoSure®	3	Dairy DHA & ARA	4
Soy	5	Soy	4
Sensitive® for fussiness & gas	4	LactoRelief™	4
Sensitive® for Spit-up	4	Store Brand Formula	
Supplementation	4	For the following store brands, use the insert indicated for the type of formula in the chart below.	
Total Comfort™	4	America's Choice™, BabiesRU's®, Baby basics®, Bear Essentials, Berkley & Jensen® Baby, Comforts™, CVS®, Giant®, Giant Eagle Baby, H-E-B Baby™, Home 360°™ Baby, Kuddles®, Little Ones™, Meijer™, Mom to Mom™, Mother's Choice, Parent's Choice™, Rite Aid®, Simply Right™, Top Care®, Up & Up®, Wegmans, Walgreens Well Beginnings™	
PM 60/40 Low Iron	4		
Abbott Elecare®	4		
Gerber®			
Good Start® Gentle	5		
Good Start® Nourish	3		
Good Start® Protect	5		
Good Start® Soy	5		
Good Start® Soothe	3		
Graduates® Gentle	5		
Graduates® Protect	5		
Graduates® Soy	4		
Enfamil™			
A.R.®	4		
EnfaCare®	3		
Gentlease®	5		
Nutrimigen™	1		
Premium Infant	5		
Premium Newborn	5		
Prosobee®	3		
Enfagrow® Gentlease®	3		
Enfagrow® Premium	4		
Enfagrow® Soy	4		

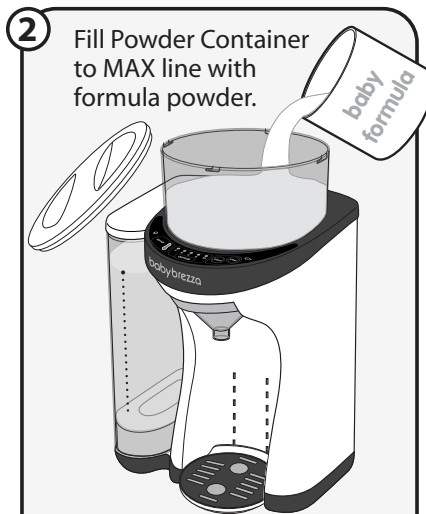
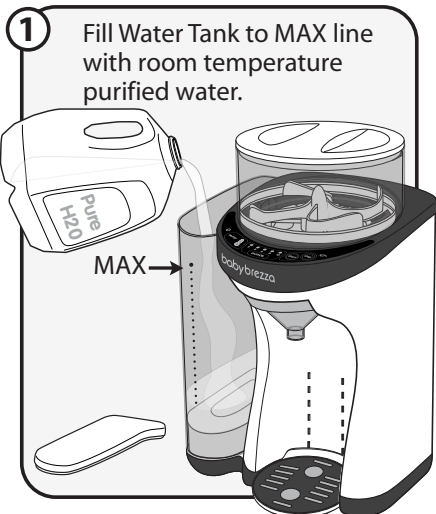
If you do not see your formula brand or type on this list, check www.babybrezza.com for updates or contact customer service at 1-888-396-6552 for assistance.

Occasional clumping may occur due to the nature and composition of powdered formula. Always check for clumps and shake or stir the bottle if necessary.

Bottle Preparation

Before preparing a bottle with the Formula Pro:

- Always use a clean and sterilized bottle, nipple or other feeding equipment.
- Wash and dry hands before handling sterilized bottles.
- Make each bottle as needed, and do not store mixed formula for later use.



Pour powder loosely and evenly into Powder Container. Do not pack powder inside or overfill Powder Container. Powder can be spread evenly with the 3 arms on the Powder Container Lid before closing.

About water temperature

The heater in the Water Tank will warm the water and keep it warm as long as the machine is powered on. If you refill the Water Tank with cool or room temperature water and need to use the machine right away, the machine can be used while water is heating (flashing yellow light).

If you run the machine with cool or room temperature water, before the water is warm and ready, always make sure formula is mixed properly and check for clumps.

Temperature Indicator Lights

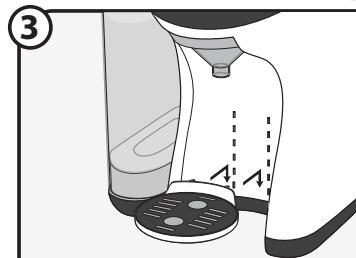


- Solid Green = Water warm and ready.
- Flashing Yellow = Water heating.
- Flashing Yellow & Green = Water poured into tank is too hot or too cold.

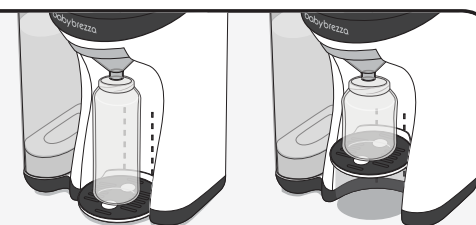
For quickest warming time, always fill the water tank with room temperature or cool water. Flashing green & yellow lights mean the water poured into in the Water Tank is too hot or too cold. The machine will not work while the green & yellow lights flash. If you don't want to wait long for the water to heat, do not fill with water stored in the refrigerator.

⚠ Never fill Water Tank with hot water. If you boil water before using it in the machine, let the water cool to body or room temperature before pouring it into the Water Tank.

Bottle Preparation Continued



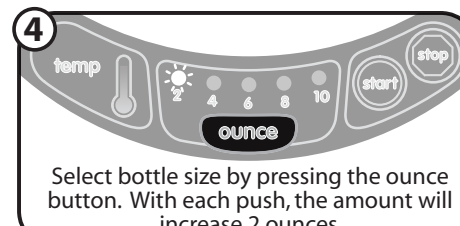
Select correct height for Drip Tray based on bottle height. Lift up and pull out to remove. Push in and **down** to install.



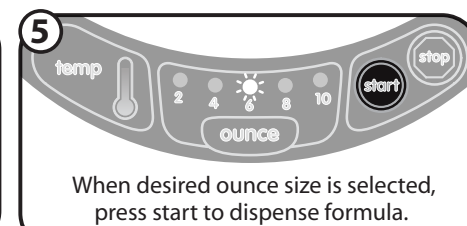
Tall Bottle

Short Bottle

Adjust the drip tray so the bottle is as close to the Funnel outlet as possible. This will make sure no formula spills outside of the bottle.

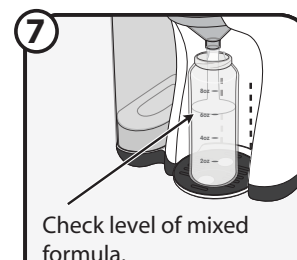
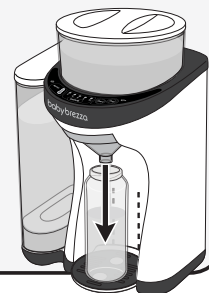


Select bottle size by pressing the ounce button. With each push, the amount will increase 2 ounces.



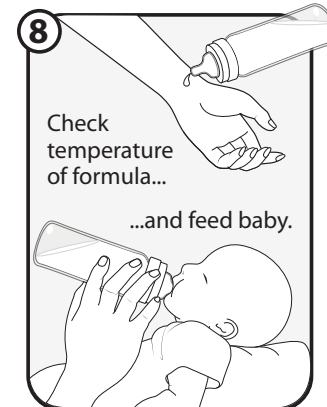
When desired ounce size is selected, press start to dispense formula.

6 Machine will dispense formula into bottle and stop automatically when done.



Check level of mixed formula.

Level will appear higher due to added powder volume.



Check temperature of formula...

...and feed baby.

⚠ Never remove Water Tank, Funnel or Powder Container while machine is in operation.

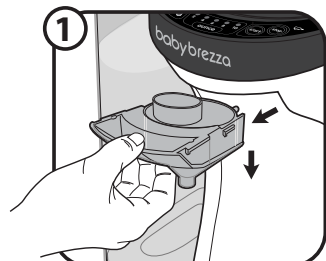
After baby stops feeding from bottle, discard any leftover formula mixture.

Always hold the bottle when feeding baby. Never prop the bottle up and leave your baby to feed unsupervised.

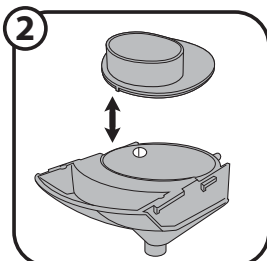
Cleaning

Unplug the appliance before cleaning. Do not use abrasive pads to clean the machine.

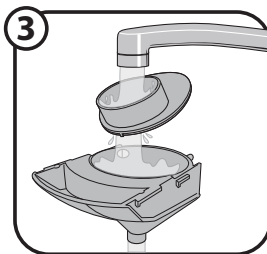
We recommend cleaning The Funnel, Funnel Cover and underside of Powder Container once per day (if machine is used daily). Follow these steps to clean the machine parts.



Remove Funnel and Funnel Cover by pulling out and down.



Remove Funnel Cover from Funnel by lifting up on Funnel Cover.



Wash and rinse Funnel & Funnel Cover thoroughly. Funnel and Funnel Cover are top rack dishwasher safe and are also safe for steam sterilization.



With the Funnel removed and Powder Container attached to machine, wipe any dry formula powder from the underside of the Powder Container & Funnel Compartment in a circular motion with a DRY paper towel or DRY soft cloth.

Wipe underside of powder container with **clean, dry** cloth.

⚠️ Never use a wet or damp cloth to clean the Funnel Compartment or underside of Powder Container.

⚠️ Always make sure the Funnel and Funnel Cover are completely DRY before placing in machine.

- The inside of the Water Tank should be cleaned once a month with mild detergent and soft cloth or sponge. Rinse inside of Water Tank thoroughly before refilling with clean, purified water. Wipe the outside of the Water Tank with a damp clean cloth.

Never immerse Water Tank or get the electronics in the base of the Water Tank wet.

If the electronics in the base of the Water Tank get wet, allow to air dry thoroughly before placing back on base. **Never place Water Tank in dishwasher.**

- The Powder Container and Powder Container Parts should be cleaned once a month by emptying any remaining powder (powder can be saved for refill) and cleaned with mild detergent and soft cloth or sponge. ⚠️ **Make sure Powder Container and all Powder Container Parts are completely dry before reassembly and refilling the Powder Container with powder. Never place Powder Container in dishwasher.**

- The machine Base should be wiped with a damp, soft cloth or sponge and dried immediately. Never submerge the base or plug in water or other liquids. Dry machine Base after cleaning.

ALWAYS FOLLOW INSTRUCTIONS AND NOTE EXPIRY DATE ON POWDER MANUFACTURER LABEL

User Tips

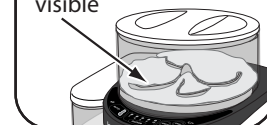
Do not remove the Water Tank from the base to refill. Simply lift the Water Tank Lid at the front and pour water in. Make sure to keep water above "MIN" line.

Refill Water Tank regularly with room temperature water and keep machine powered on. This way, the water will always be warm and ready to serve.

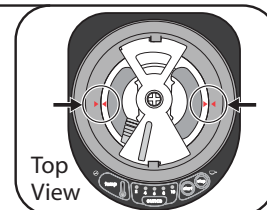


Always make sure powder level is above the top of the Stirring Wheel. You will know it's time to refill the Powder Container when any of the four horizontal arms of the Stirring Wheel are visible through the powder. Do not use the machine when the powder level is below the MIN line marked on the Powder Container.

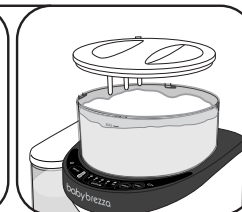
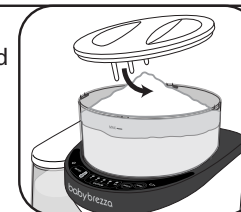
Refill when arms of stirring wheel are visible



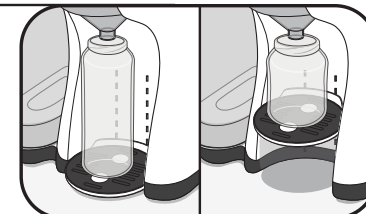
When setting up the Powder Container Parts, always make sure the Measuring Wheel and Locking Cover are set up with the arrows aligned as shown in the illustration at right. If the Measuring Wheel rotates when installing the Locking Cover, rotate the Measuring Wheel to the position shown at right.



If the powder forms a cone shape mound when refilling the Powder Container, use the 3 arms on the bottom of the Powder Container Lid to gently level the powder.



Adjust the Drip Tray so the bottle is as close to the funnel outlet as possible. This will make sure no formula spills on the outside of the bottle.




The Formula Pro can be used at any time during the water heating cycle, but not all powders mix well with cool or room temperature water. Always check for clumps & shake or stir the closed bottle gently to mix the powder completely with the water.

Troubleshooting

Condition	Possible Cause	Remedy
Machine will not start.	Unit is unplugged.	Make sure the plug is securely inserted into the power outlet.
	Unit is not turned on.	Turn switch on lower back of unit from off to on.
	Funnel is removed or not fully inserted.	Insert funnel or push front of funnel until flush with machine.
	Water Tank is removed or not fully seated.	Place water tank on base or push down all the way.
	Water level is below "MIN" line.	Add more water to water tank.
	Powder container is removed or not fully seated.	Place powder container on base or push down all the way.
	Powder container lid is not completely closed.	Turn Powder container lid clockwise to close completely.
	Powder container lid is on backwards.	Make sure tab on outer edge of Powder Container Lid is facing the back of the machine and engaged with safety switch. See page 3, step 6 for diagram.
	Water in Water Tank is too cold. (Green & Yellow Temp LEDs Flashing)	Allow water to warm up or pour warmer water in Water Tank to raise temperature faster.
	Water in Water Tank is too hot. (Green & Yellow Temp LEDs Flashing)	Allow water to cool down or pour cool water in Water Tank to lower temperature faster.
Temperature of dispensed formula is too cold.	Water has not been heated to correct temperature.	Wait for heater to warm water in tank. Green LED in "temp" section of control panel will illuminate when water reaches correct temperature.
Not enough powder dispensed.	Powder level in powder container is too low.	Refill Powder Container with more powder.
	Powder is stuck in powder measuring wheel.	Make sure silicone scraper is installed correctly.
	Incorrect insert for powder type.	Make sure to use the correct insert for powder type. See page 4.

Troubleshooting

Condition	Possible Cause	Remedy
Too much powder dispensed.	Incorrect insert for powder type.	Make sure to use the correct insert for powder type. See page 4.
Scaling on water tank heater plate.	Mineral rich water used persistently.	Clean heater plate and use purified/distilled water.
Powder build-up on funnel cover and underside of powder container.	Frequent use in high humidity.	Clean funnel cover and powder container bottom frequently and use machine away from humid areas.
Water Tank is full, red no water light  is on.	Water Tank not fully seated.	Push Water Tank down all the way on Base.
Funnel will not fit all the way in Funnel Compartment.	Funnel Cover is not straight on funnel or not pushed down completely.	Align tab on front of Funnel Cover with notch in Funnel and push down Funnel Cover completely.

If you can not remedy problems with the machine by using the troubleshooting chart above, please contact Customer Service at 1-888-396-6552. Any other servicing should be performed by an authorized service representative.

Customer Service and Warranty

If you are experiencing problems with your Baby Brezza Formula Pro, please call our Customer Service department at 1-888-396-6552 before returning the product so that we can offer you our best service customized to your particular situation.

Limited 1-Year Warranty

The limited warranty is valid only on products bought through authorized resellers and used in the United States and Canada. Buying through an unauthorized reseller or using this product outside of the United States and Canada automatically voids this warranty.

This warranty is available to consumers only. You are a consumer if you own a Baby Brezza Formula pro that was purchased at retail for personal, family or household use. Except as otherwise required under applicable state law, this warranty is not available to retailers or other commercial purchasers or owners. We warrant that your Baby Brezza Formula Pro will be free of defects in material or workmanship under normal home use for one year from the date of original purchase. Customer will be required to present original proof of purchase in order to obtain the warranty benefits. In the event that you do not have proof of purchase date, the purchase date for purposes of this warranty will be the date of manufacture. If your Baby Brezza Formula Pro should prove to be defective within the warranty period, we will repair it or, if we consider it necessary, replace it.

To obtain warranty services, please call Customer Service at 1-888-396-6552 or write to:
Baby Brezza, 250 Passaic Street, Newark, NJ 07104 Attn: Customer Service.