

## Kogan SmarterHome™ 2.0kW Portable Air Conditioner

(7,000 BTU)

KAWFPAC07YA

Safety & Warnings	3
Components	6
Overview	7
Installation	9
Operation	14
Connect to the SmaterHome™ App	16
Google Home	19
Amazon Alexa	22
Cleaning & Care	26
Troubleshooting	29
Notes	30

# Safety & Warnings

Read all safety notes and instructions before first use even if you are familiar with this product. Retain this user guide for future reference.

- This product is for domestic use only. Do not use it in any commercial, industrial or outdoor environments.
- Keep the appliance away from heat sources, electrical outlets, and direct sunlight.
- Always turn off the appliance before unplugging it from the electrical outlet.
- Unplug the appliance before cleaning, replacing parts, or when it is not in use for extended periods.
- Keep the appliance out of reach of young children.
- Do not operate the appliance unattended, even for a short time. Always switch it off before leaving the room.
- Do not pull the power cord to unplug or move the appliance.
- Do not place the appliance on surfaces that are wet or may collect liquid.
- Do not allow water or oil to enter any part of the appliance.
- Do not insert foreign or hard objects into the fan blades.
- Do not attempt to repair the appliance yourself. Any repairs, including power cord replacement, must be performed by a licensed electrician.
- Use only accessories and replacement parts supplied or approved by Kogan.com.
- Do not operate the appliance near petrol, gas or other flammable liquids or vapours.
- Do not use sprays (such as insecticides or paint) or other flammable agents near the appliance. Doing so may cause damage or create a fire risk.

**Risk of Fire or Explosion: This product contains flammable refrigerant. The following precautions must be followed:**



- Do not attempt to accelerate the defrosting process or cleaning with any method not recommended by Kogan.com.
- Store the appliance in a location free from continuously operating ignition sources, such as open flames, gas appliances, or electric heaters.
- Do not pierce or burn refrigerant tubing. Note that refrigerants may not have an odour.
- Ensure all ventilation openings are free from obstruction.

- Handle, install, and operate the appliance with care to avoid damaging the refrigerant tubing.
- Do not drill into or puncture the appliance casing.
- All maintenance, servicing, and cleaning must be performed by qualified technicians trained in handling flammable refrigerants.
- Dispose of the air conditioner according to local regulations. Flammable refrigerants require special handling and disposal procedures. Contact your local council or waste authority for guidance.

## Precautions

- This product is for non-commercial use only.
- It is intended for indoor use in a dry environment.
- Ensure proper air circulation by keeping the area around the appliance clear. Do not stack items around it.
- Avoid placing heavy objects on top of the appliance to prevent damage.
- Do not operate the appliance with wet hands or in humid conditions.
- Clean the exterior with a soft cloth. Do not use wax, thinners or harsh chemical cleaners.
- Do not drink the condensed water discharged from the appliance.
- Unplug the appliance if it will not be used for an extended period.
- Only qualified professionals should dismantle or repair the appliance.

## Safety Warnings

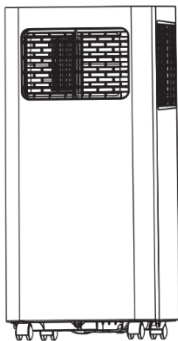
- Do not use the appliance if the power cord or plug is damaged, or if the electrical outlet is loose. Cease use immediately and contact **help.Kogan.com** for support.
- Never use an unauthorised replacement power cord. Ensure the power supply voltage matches the appliance rating.
- Do not modify, splice or extend the power cord under any circumstances.
- Use a grounded electrical outlet to reduce the risk of electric shock.
- Do not plug in or unplug the appliance with wet hands.
- Always unplug by holding the plug, not by pulling the cord.
- Do not turn the appliance on or off by plugging or unplugging it.
- Always turn the appliance off before unplugging it from the outlet.
- Do not overload the electrical socket.

- Keep the appliance away from heat sources and direct sunlight.
- If you notice any unusual noise, burning smell, or smoke, immediately turn off and unplug the appliance and seek professional inspection.
- Do not place heavy objects on the power cord, and never allow the cord to become damaged, pinched, or twisted.
- Do not insert fingers or any objects into the air outlet louvre.
- Keep all electrical components of the appliance dry.
- If water enters the appliance, immediately switch it off and unplug it, then contact a qualified technician for inspection and repair.
- Always turn off and unplug the appliance before cleaning or replacing parts.
- In the event of a gas leak, ventilate the room thoroughly before connecting the appliance to power.
- This appliance can be used by children aged 8 and over, and by persons with reduced physical, sensory or mental capabilities, only if they are supervised or have been instructed in the safe use of the appliance and understand the hazards involved.

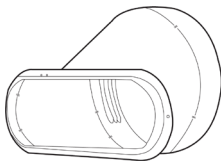
## **Tips**

- Ensure the appliance is placed vertically on a level surface to allow the compressor to function correctly.
- Maintain a minimum clearance of 50cm from nearby objects to ensure proper ventilation.
- Do not operate the appliance near petrol, gas, or other flammable substances.
- Keep the appliance away from sprays or solvents, as these may cause plastic parts to deform or damage internal electrical components.

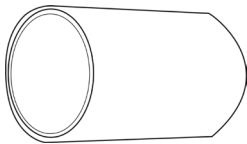
# Components



Air Conditioner



Window Seal Connector



Exhaust Pipe



Duct Interface



Window Sealing Kit



Drain Pipe



Remote Control

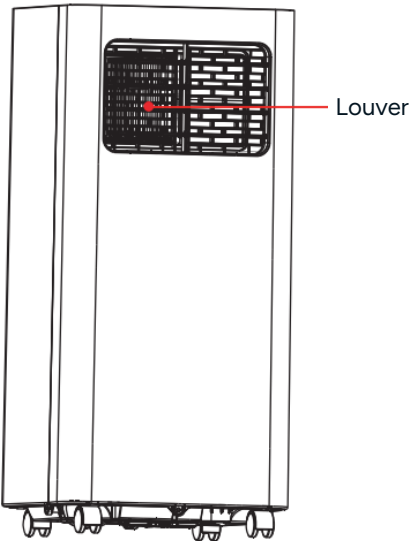
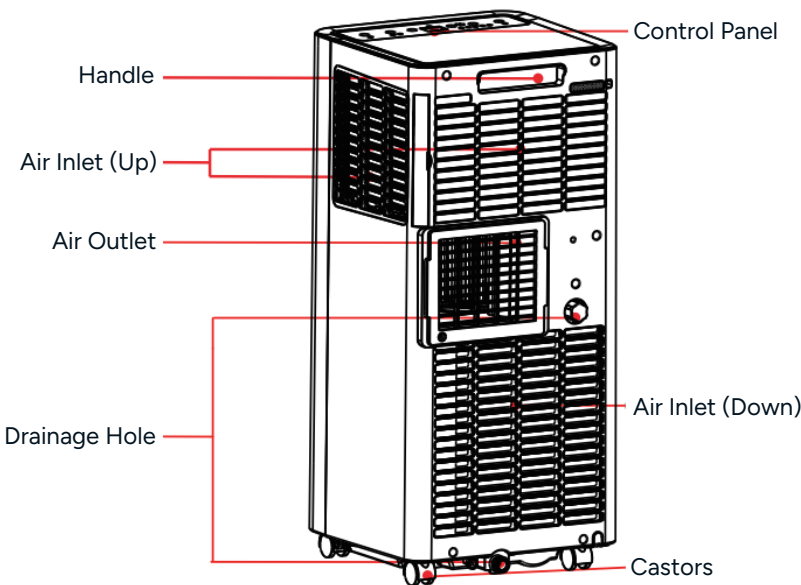


AA Batteries (x2)

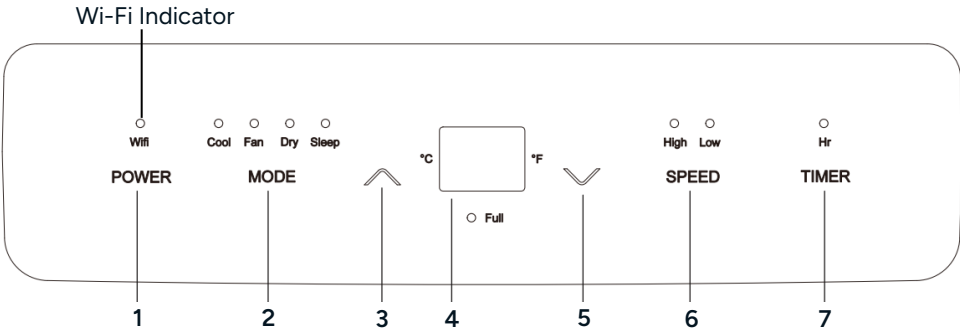


User Guide

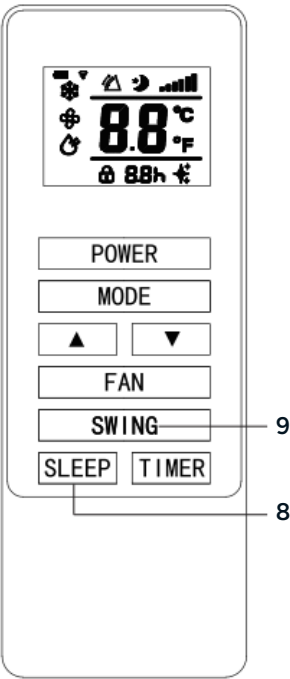
# Overview



# Control Panel



## Remote Control



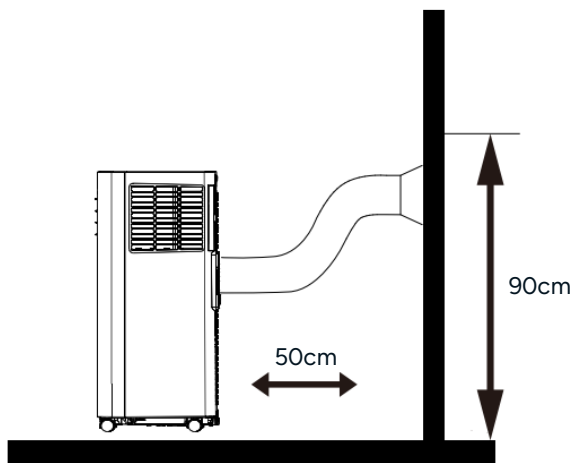
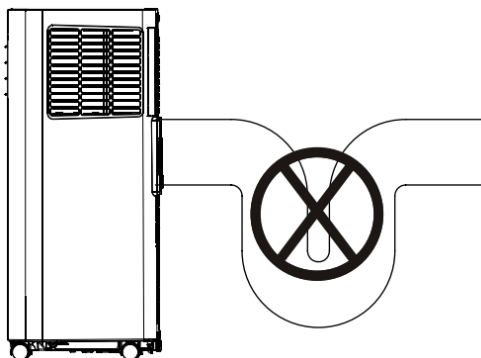
- 1. Power Button**  
Press to turn appliance On/Off.
- 2. Mode Button**  
Press to select between 'Cool, Fan, Dry & Sleep' modes.
- 3. Up Button** (for Temperature & Timer)  
In cooling mode, press to increase temperature.  
In timer mode, press to increase the time to turn on.
- 4. Display**  
Indicates temperature and time.
- 5. Up Button** (for Temperature & Timer)  
In cooling mode, press to decrease temperature.  
In timer mode, press to decrease the time to turn on.
- 6. Fan Speed Button**  
Press to select between 'High/Low' speed.
- 7. Timer Button**  
Press during standby to set the 'On' timer.  
Press during operation to set the 'Off' timer.
- 8. Sleep Button**  
Press to enable 'Sleep' mode.
- 9. Swing Button**  
Press to enable oscillation.



# Installation

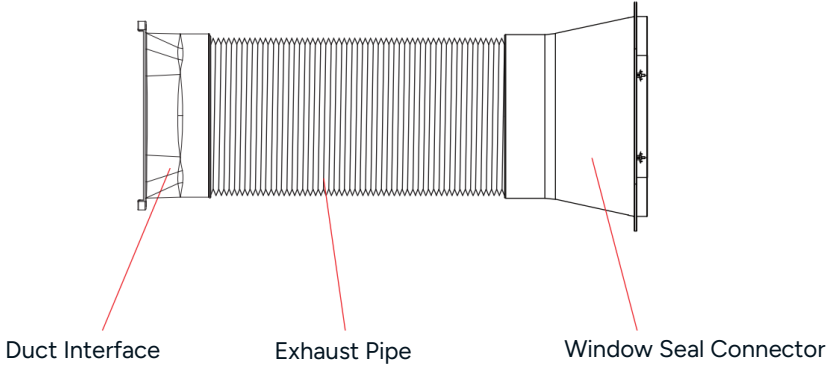
## Location

- Place the air conditioner on a dry, flat surface. Ensure there is at least a 50cm clearance away from any walls or obstructions.
- For optimal performance, ensure the window opening is no higher than 90cm from the floor.
- It is important to keep the exhaust hose straight. Incorrect installation will affect the operation of the appliance.
- Make sure that the exhaust hose is not kinked, twisted, or strongly bent.
- Make sure that the exhaust air can flow unhindered into the exhaust hose.
- The exhaust hose has a maximum length of 1.5m. Keep the distance between the window and the appliance as short as possible and install the exhaust air hose as horizontally as possible.



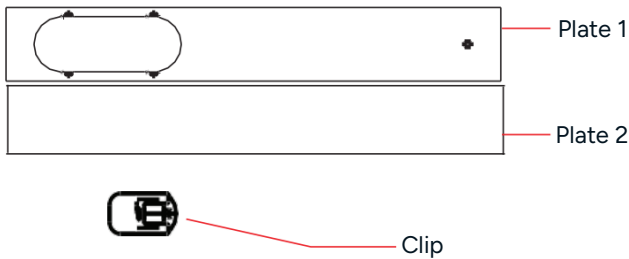
# Exhaust Pipe Assembly

1. Remove the packaging from the duct interface, exhaust pipe, and window seal connector.
2. Straighten one end of the folded exhaust pipe and screw the duct interface clockwise into the exhaust pipe.
3. Secure the window seal connector onto the other end of the exhaust pipe, completing the exhaust pipe assembly.

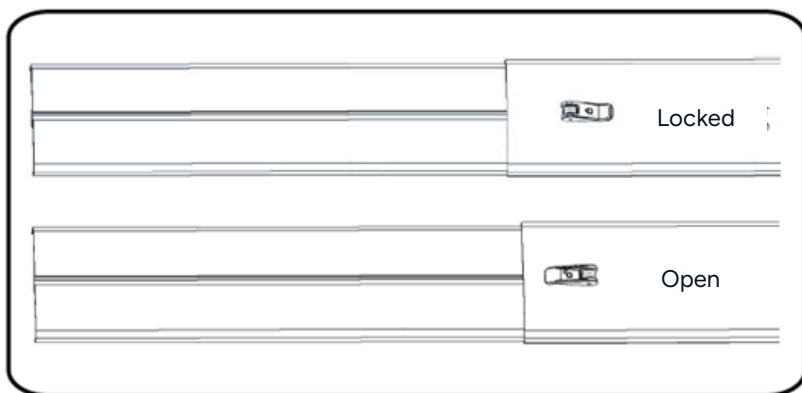


# Installing the Window Seal Kit

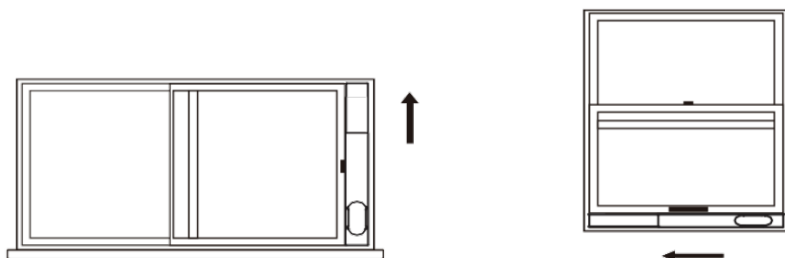
The window sealing plate is designed to fit most standard 'vertical' and 'horizontal' window applications.



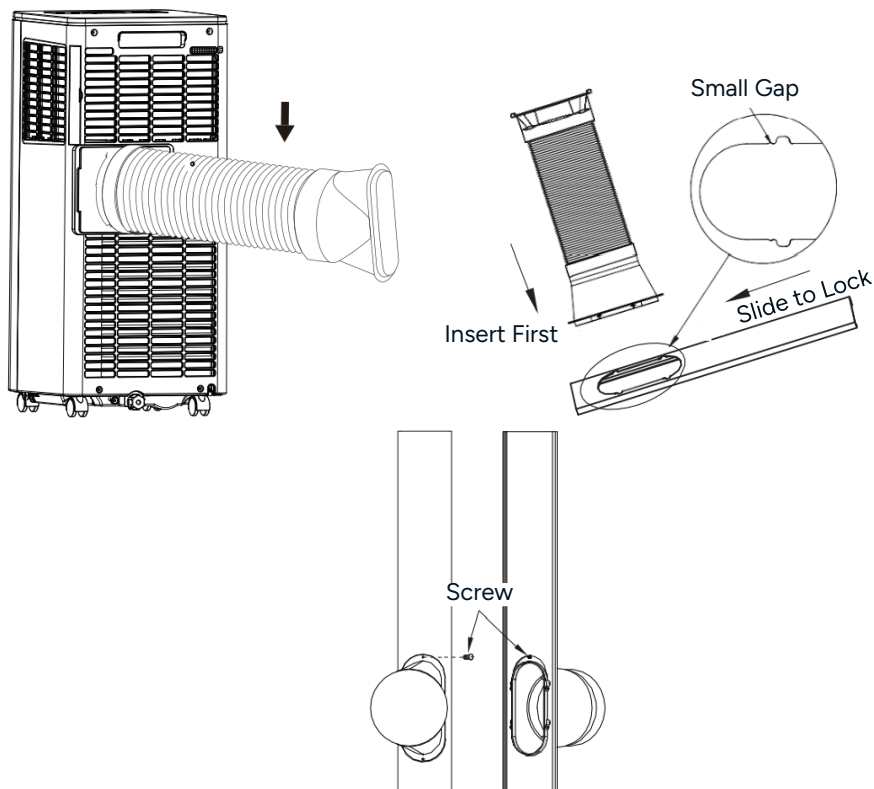
4. **Measure the size of the window:** Place the clip in the open position and adjust the length of the window sealing plate according to the size of the window sealing plate.
5. Lock the seal plate in place by placing the clip in the locked position.



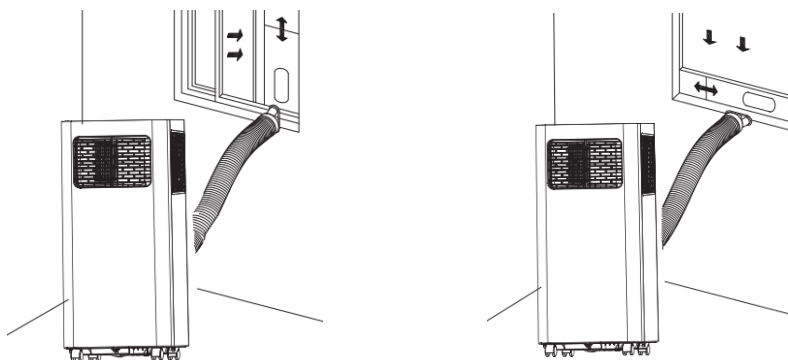
6. Mount the window seal on the window.



7. Slide the exhaust pipe assembly (window seal connector) into the opening of the window sealing panel and secure it in place using the supplied screw.

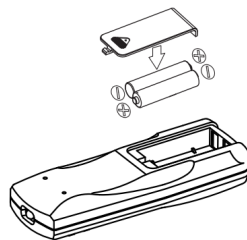


8. The exhaust pipe assembly is now installed, and the appliance is ready for use.



## Install Batteries in the Remote Control

- Remove the battery cover by sliding it according to the arrow direction.
- Insert x2 new AAA batteries, making sure that the (+) and (-) of battery are installed correctly.
- Reattach the cover by sliding it back into position



### Notes:

- Do not use rechargeable batteries.
- Remove the batteries from the remote control if the system is not going to be used for a long time.
- Do not mix old and new batteries. Do not mix alkaline, carbon-zinc or rechargeable batteries.

### WARNING:

- Caution for Ingestion. The battery may cause suffocation if swallowed by children.
- Chemicals in batteries could result in such health hazards as burns. If liquid in batteries splashes on skin or clothes, wash with clean water immediately. If batteries are swallowed, rinse mouth immediately with clean water and then go to the doctor.



# Operation

## Cooling Mode

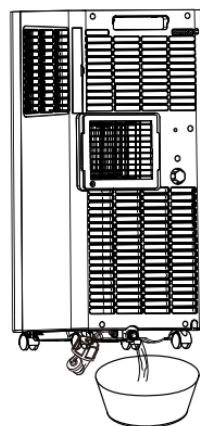
- After switching on the appliance, the cooling mode is set as standard.
- When the cooling mode is selected, the 'Cool' indicator illuminates.
- Press the 'Up' and 'Down' buttons to set a temperature between 16°C and 30°C.
- Press the 'Fan' button to set one of the speed modes 'High' and 'Low'.

## Fan Mode

- When Fan mode is selected, the 'Fan' indicator will illuminate.
- Use the 'Fan Speed' button to switch between low and high fan speeds.
- Temperature cannot be adjusted in Fan mode.

## Dry Mode

- When Dry mode is selected, the 'Dry' indicator will illuminate.
- Remove the water plug, then insert one end of the drain hose into the outlet and place the other end into a suitable water container or drain.
- If the ambient temperature is 17°C or higher, the compressor will start. If the ambient temperature drops to 15°C or lower, the compressor will stop. Once the temperature rises above 17°C again, the compressor will restart.
- The fan will operate at a fixed low speed, and the temperature setting cannot be adjusted.



### Note:

For optimal performance, remove the air exhaust duct while in Dry mode. If the internal water tank becomes full, the unit will stop and the 'FL' warning will appear on the display.

## Timer Mode

- While the appliance is in standby mode, press the 'Timer' button to set the power-on time. The 'Timer' indicator will turn on.
- While the appliance is running, press the 'Timer' button to set the power-off time. The 'Timer' indicator will turn on.

## Changing Units

To switch between Celsius and Fahrenheit, press the 'Up' and 'Down' buttons on the control panel at the same time.

# Connect to the SmarterHome™ App

## Install the App

Download the Kogan SmarterHome™ app from the Apple App Store (iOS) or the Google Play Store (Android).



App Store (iOS)

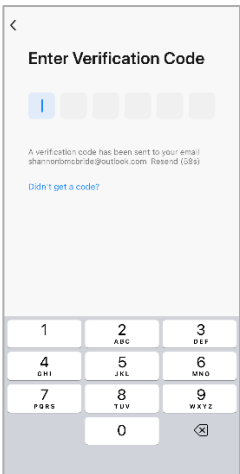
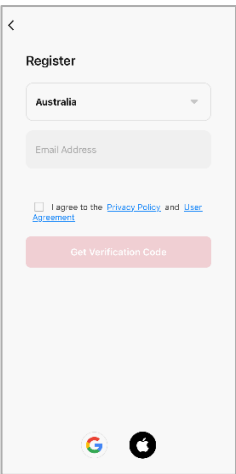
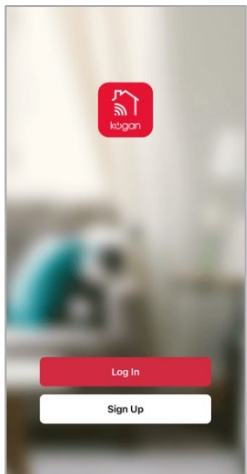


Play Store (Android)



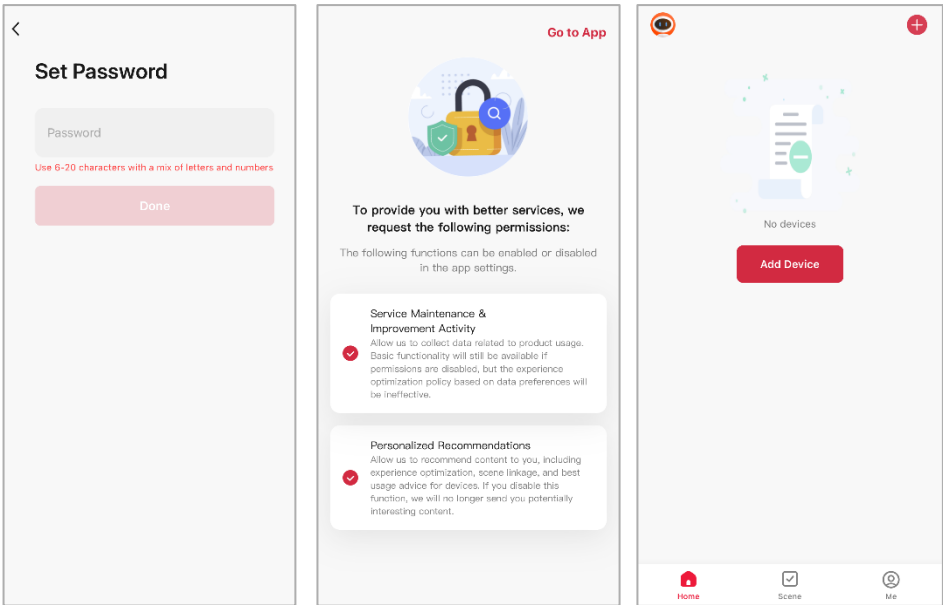
## Log In or Sign Up

1. If you already have a SmarterHome account, tap 'Log In'. To register a new account, tap 'Sign Up'.
2. The app will automatically recognise your country. If needed, you can manually select your country from the drop down menu. Enter your email address, agree to the Privacy Polics and User Agreement, and tap 'Get Verification Code' to continue.
3. A 6-digit code will be sent to the submitted email address. Enter the code before the one-minute timer expires.





- 4. Enter a password that uses 6-20 characters with a mix of letters and numbers and tap 'Done'.
- 5. Enable the permissions and tap 'Go to App'.



# EZ Mode

## Set the Device in Pairing Mode

When the air conditioner is first turned on, it may automatically enter pairing mode (the Wi-Fi light will be flashing rapidly).

If not automatically in pairing mode when powered on, you can manually set the air conditioner in pairing mode by unplugging it or turning off power at the wall, then plugging in or turning on power again. Don't press any buttons once power is reconnected, the air conditioner will then enter standby mode. Once in standby, press and hold the fan button on the control panel for 3 seconds until the Wi-Fi indicator light begins flashing rapidly.

## Add the Device to the App

1. Open the SmarterHome™ app.
2. Tap the '+' icon in the top right corner of the screen and then tap 'Add Device'.
3. Tap 'Add' when the device appears. Alternatively, select the product type from the list of options in the app (Heating & Cooling > Air Conditioner).
4. Follow the prompts to add your device to the app.

### Notes:

- The device and the app must use the same Wi-Fi network.
- The device is only compatible with 2.4Ghz networks.

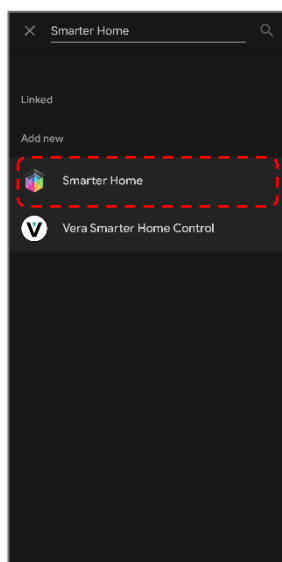
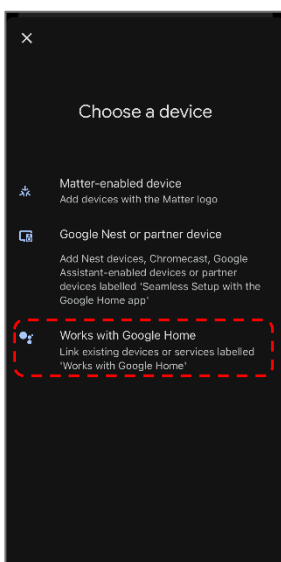
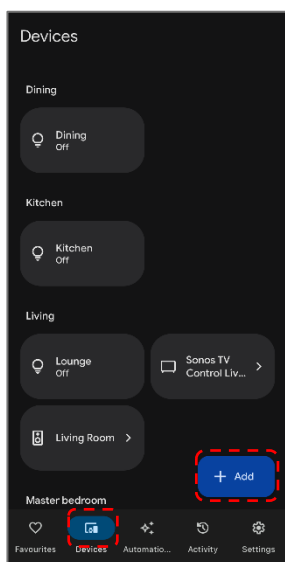
## Connectivity Support

Scan the QR code below or go to <https://help.kogan.com/s/article/Kogan-SmarterHome-App-Connectivity-Support> and follow the pairing instructions for EZ mode.

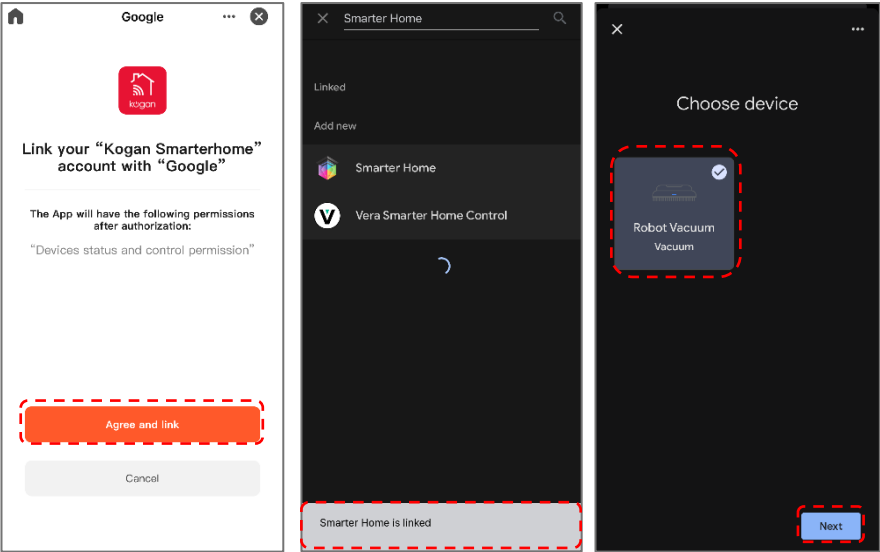


# Google Home

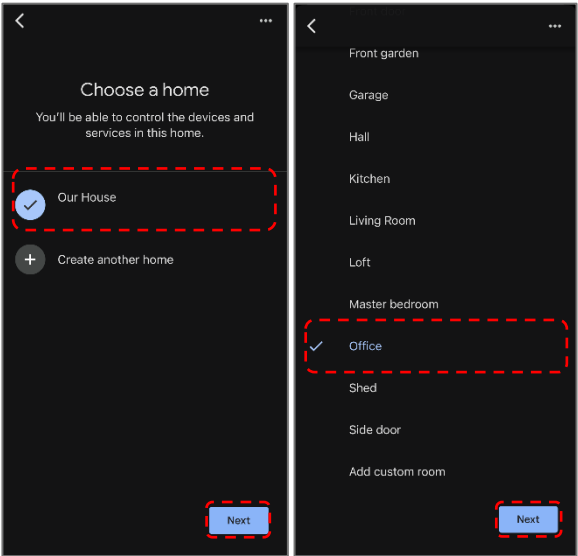
1. Ensure you are logged into the Kogan SmarterHome™ app.
2. Open the Google Home app.
3. Go to the devices tab and tap the '+ Add' button in the lower right corner.
4. Tap 'Works with Google Home'.
5. Search for 'Smarter Home' in the search bar and select 'Smarter Home' from the results.



- 6. Tap the 'Agree and link' button.
- 7. Search for 'Smarter Home' in the search bar and select 'Smarter Home' from the results.
- 8. Once linked, a 'Smarter Home is linked' pop-up will appear at the bottom of the screen.
- 9. Tap your device and then tap the 'Next' button.

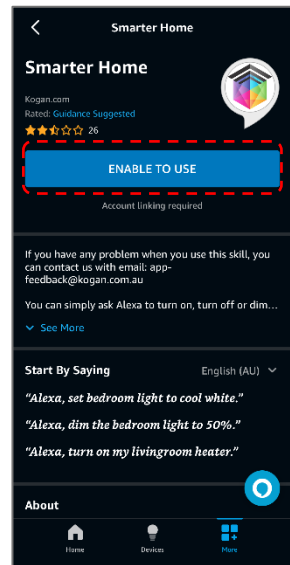
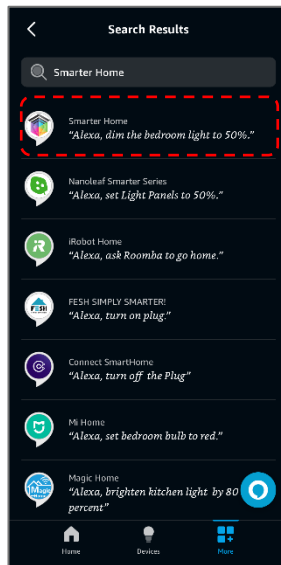
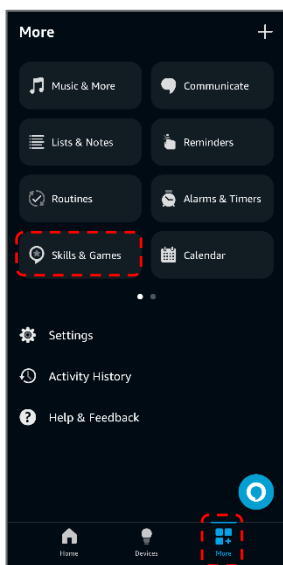


- 10. Select the home you wish to add the device to and tap the 'Next' button.
- 11. Select the room your device is in and tap the 'Next' button.

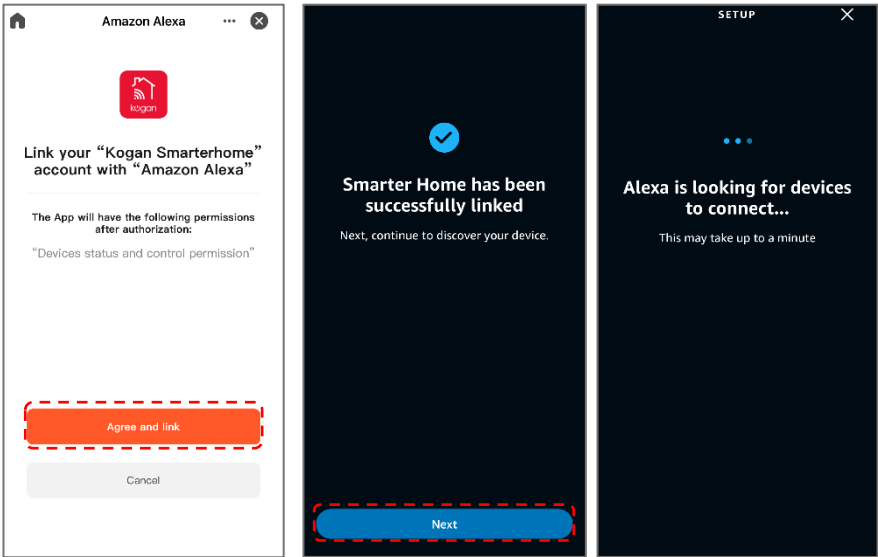


# Amazon Alexa

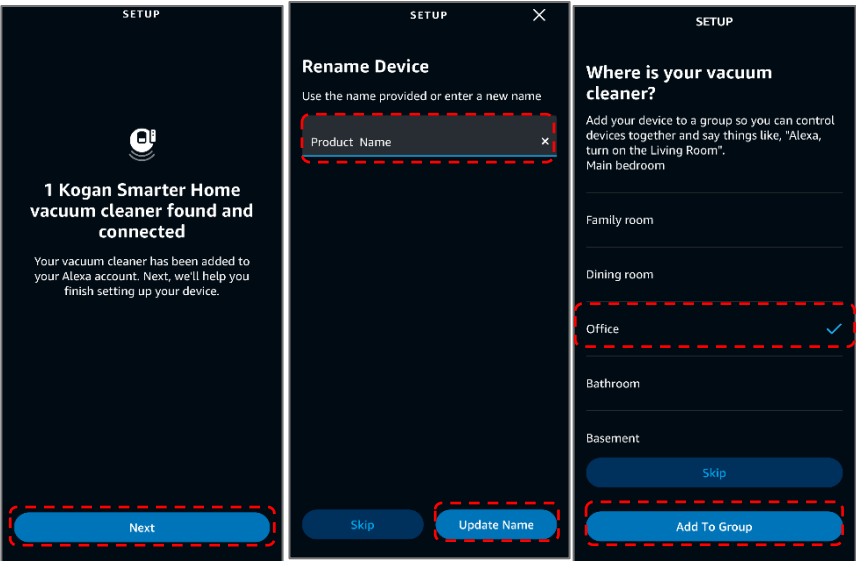
1. Ensure you are logged into the Kogan SmarterHome™ app.
2. Open the Amazon Alexa app.
3. Go to the 'More' tab and tap 'Skills & Games'.
4. Search for 'Smarter Home' in the search bar and select 'Smarter Home' from the results.
5. Tap the 'ENABLE TO USE' button.



- 6. Tap the 'Agree and link' button.
- 7. Once linked, tap 'Next'. Alexa will search for any compatible devices.

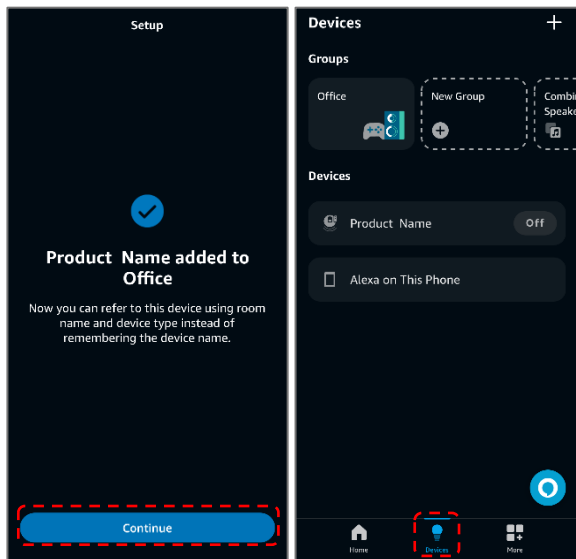


- 8. Once your device has been found, tap 'Next'.
- 9. Rename the device to your desired name and tap 'Update Name'.
- 10. Select the room your device is in and tap 'Add To Group'





11. Once the device has been successfully added to your desired room, tap 'Continue'.
12. You can view and manage your device from the 'Devices' tab.



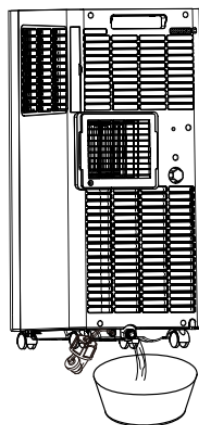
# Cleaning & Care

## Drainage

This appliance features a self-evaporating system that enhances performance and improves energy efficiency by using condensed water to cool the condenser.

If the internal water container becomes full, the display will show 'FL' and the unit will emit a buzzer sound. Once the compressor stops, drain the water as follows:

1. Unplug the appliance and remove the exhaust duct.
2. Move the unit to a suitable location for drainage.
3. Pull out the water plug and allow all water to drain completely.
4. Reinsert the water plug securely.
5. Reinstall the air exhaust duct and restart the appliance.



## Maintenance

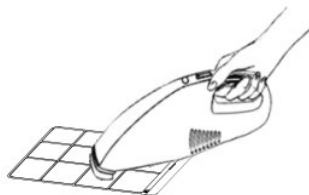
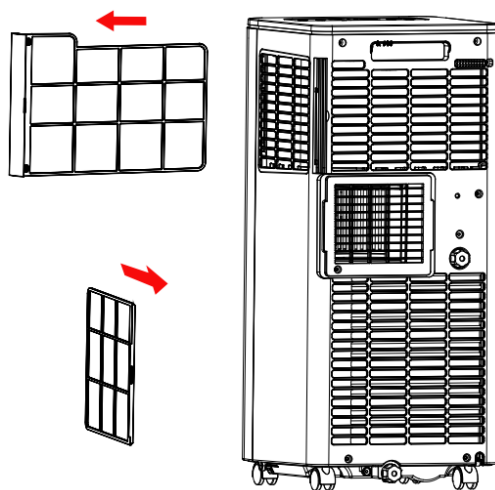
**WARNING:** To reduce the risk of electric shock, always turn off and unplug the appliance before performing any maintenance or repairs.

### Cleaning the Body

1. Unplug the appliance before cleaning.
2. Wipe the exterior with a soft, damp cloth.
3. Do not use chemical cleaners such as benzene, alcohol or petrol, as these may damage the surface or internal components.
4. Never allow water to enter the appliance.

## Cleaning the Filters

1. Clean the filters every 2 weeks to maintain performance. A blocked filter reduces efficiency.
2. Remove the air-inlet grille and take out the filters.
3. If the filter is visibly dirty, wash it in water at or below 40°C using a mild detergent.
4. If the filter is only slightly dusty, clean it with a vacuum cleaner.
5. After washing, let the filter air-dry in a shaded, cool area away from direct heat sources.
6. Do not reinstall the filter until it is completely dry.
7. Never use the appliance without the filter installed.



### **WARNING:**

- Do not wash the filter in water above 40°C.
- Avoid using harsh chemicals such as alcohol, benzene or petrol.
- Do not expose the filter to heat sources.
- Allow the filter to dry naturally in a cool, shaded area.

## Seasonal Maintenance

If the appliance will not be used for an extended period, follow these steps to prepare it for storage:

1. Remove the drainage plug to empty any remaining water.
2. Run the appliance in Fan mode for 2 hours to dry the internal components.
3. Turn off and unplug the appliance.
4. Clean and dry the filters, then reinstall them.
5. Remove and store the air exhaust pipe.
6. Remove the remote control batteries.
7. Wrap the appliance in a plastic bag and store it in a cool, dry place.

# Troubleshooting

Some common issues can be resolved by following the steps below. If the problem persists, contact [help.Kogan.com](https://help.kogan.com) for further support.

Problem	Possible Cause	Solution
The appliance does not respond.	No display.	Check that the power plug is plugged in and that the power cord is undamaged.
	The display panel shows 'FL'.	Switch off the appliance and empty the water tank. Restart the appliance and the display will return to normal.
	The timer shut-off function has been started.	Restart the appliance 3 minutes after it was switched off.
Cooling efficiency is not optimal (stops and start frequently).	Direct sunlight.	Close the curtains.
	Doors and windows are open or there are many people or heat sources in the room.	Close doors and windows and remove heat sources.
	The filters are very dirty.	Clean or replace the filters.
	Air inlet or air outlet openings are blocked.	Remove the dirt or foreign material.
The appliance is very loud.	The appliance stands unevenly or wobbles.	Place the appliance on a firm, level surface on which it cannot wobble.
The compressor is not working.	The compressor protection function is active.	Wait 3 minutes for the appliance to cool down and then restart it.

## Error Codes

E1	Coil temperature sensor error.
E2	Indoor temperature sensor error.
E3	<b>Frost protection function:</b> If the coil temperature is too low, the frost protection is triggered and appliance will turn off. Once the temperature rises above 8 °C, the protection is released, and the previous operating will resume.

[illegible]

[illegible]

### **Need more information?**

We hope that this user guide has given you the assistance needed for a simple set-up.

For the most up-to-date guide for your product, as well as any additional assistance you may require, head online to **help.Kogan.com**.

