

UP77\*

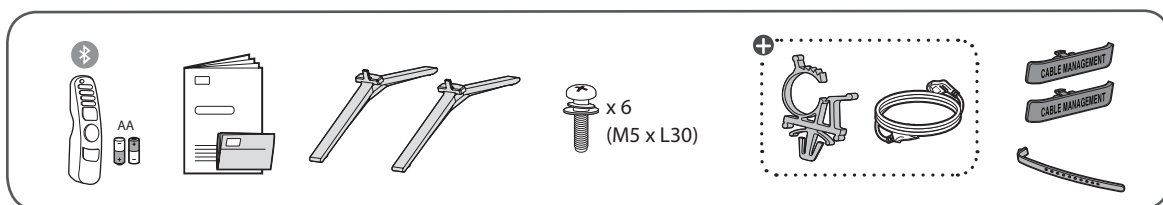
## Quick Start Guide



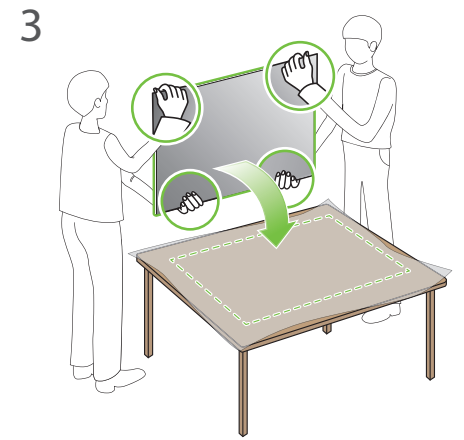
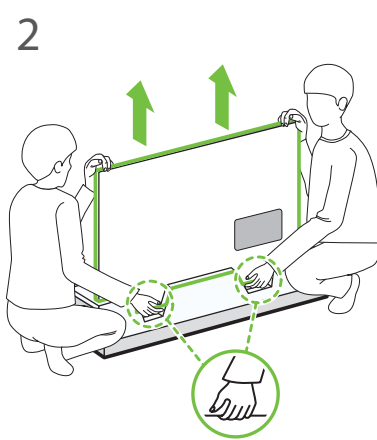
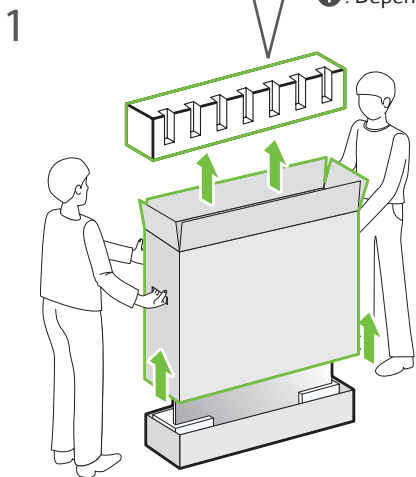
Images shown in manual  
may vary depending on model

### Unpacking

Check your product box for the following items. If there are any missing accessories, contact the local dealer where you purchased your product. The illustrations in this manual may differ from the actual product and item.

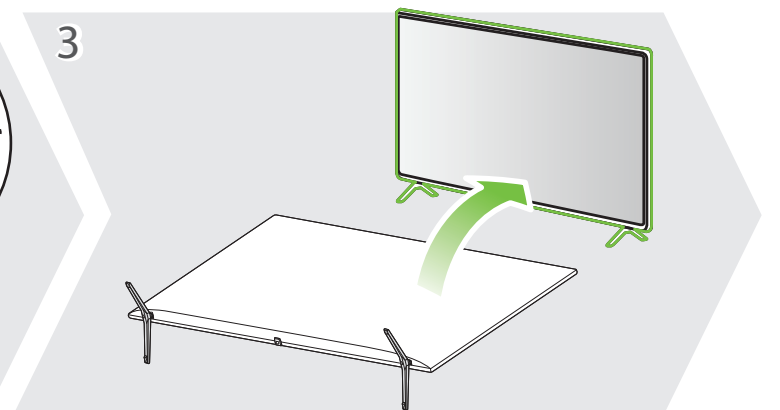
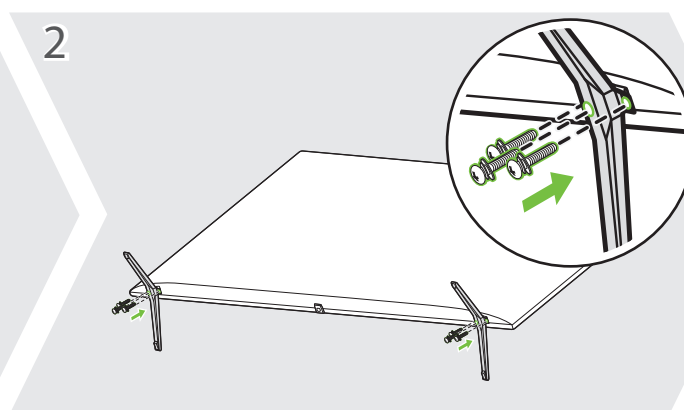
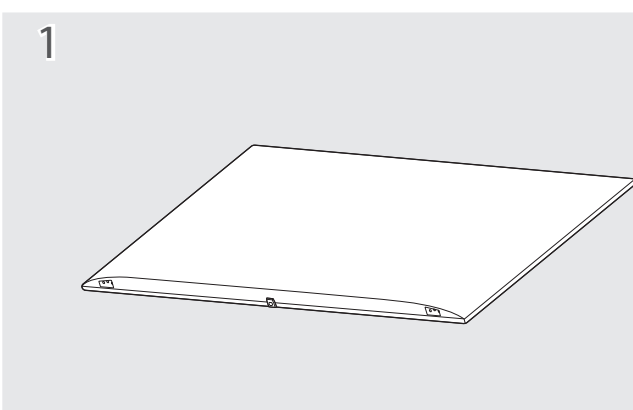


⊕: Depending on model

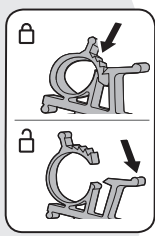
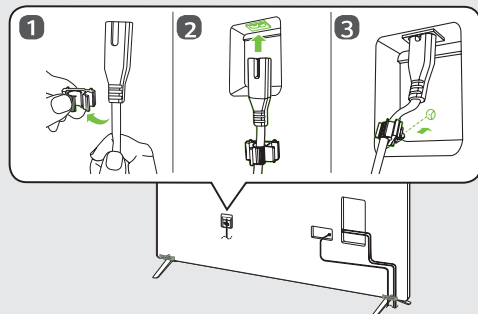
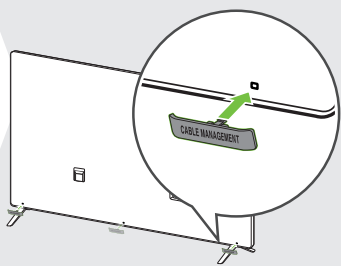


### CAUTION

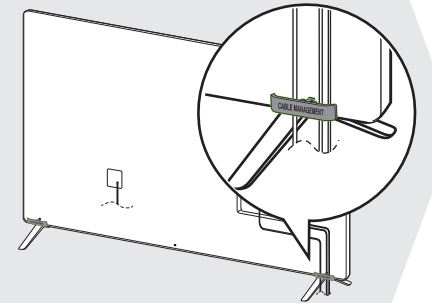
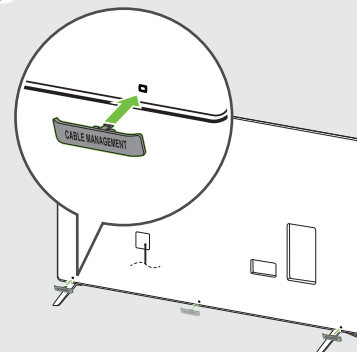
Image shown may differ from your TV  
When attaching the stand to the TV set, place the screen facing down on a cushioned table or flat surface to protect the screen from scratches.



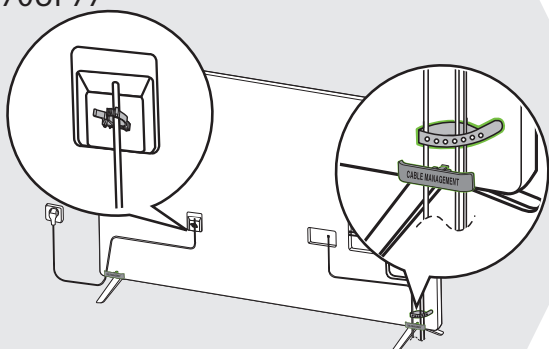
### 4-A 70UP77\*



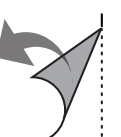
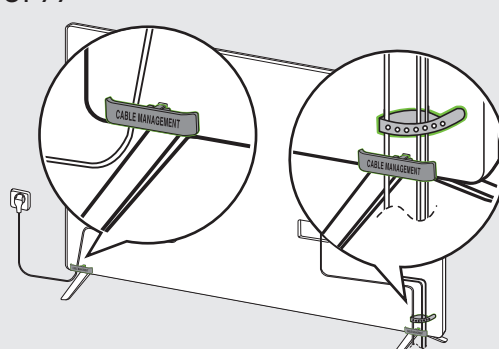
### 4-B 75UP77\*

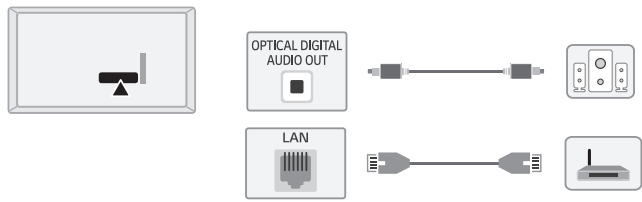


### 5-A 70UP77\*



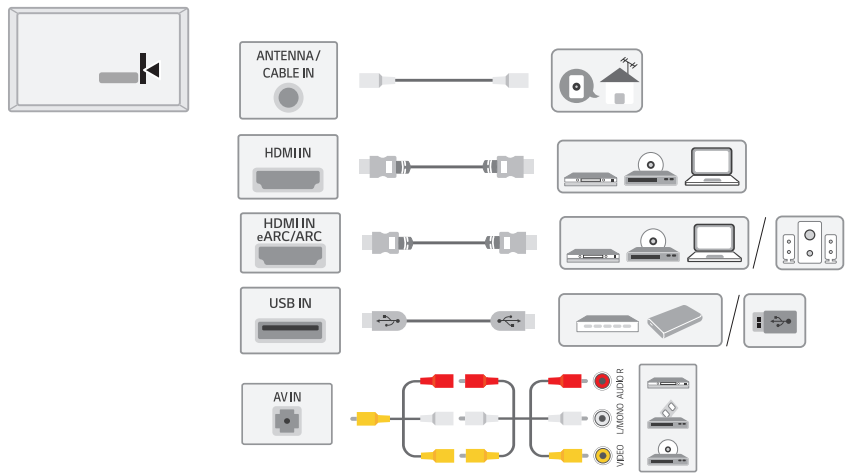
### 5-B 75UP77\*





NOTE

- Do not look into the optical output ports, looking at the laser beam may damage your vision
- Audio with ACP (Audio Copy Protection) function may block digital audio output.

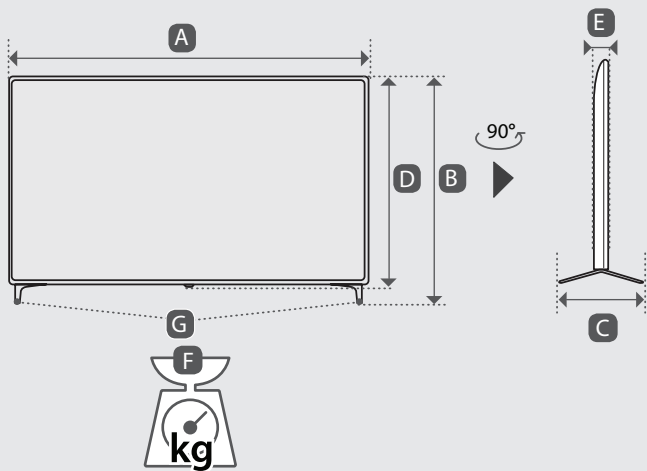
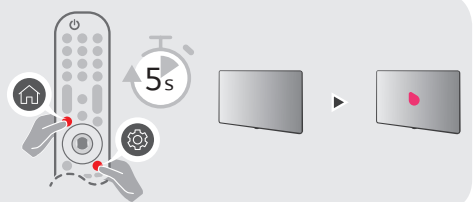


ARC (Audio Return Channel)

- An external audio device that supports SIMPLINK and ARC must be connected using HDMI IN eARC/ARC port
- When connected with a high-speed HDMI cable, the external audio device that supports ARC outputs SPDIF audio without additional audio cable and supports the SIMPLINK function.

NOTE

- Some USB Hubs may not work, if a USB device connected using a USB Hub is not detected, connect it to the USB port on the TV directly
- Connect the external power source if your USB is needed.



	A	B	C	D	E	F	F-G
	(mm)					(kg)	
70UP7750PTZ	1562	971	362	907	59.9	29.1	28.4
75UP7750PTZ	1678	1027	362	964	59.9	32.1	31.4
Power requirement				AC 100-240 V ~ 50 / 60 Hz			



- Read **Safety and Reference**.
- The Analog Gender adapter can be purchased separately at Customer Service.

+ : Depending on model