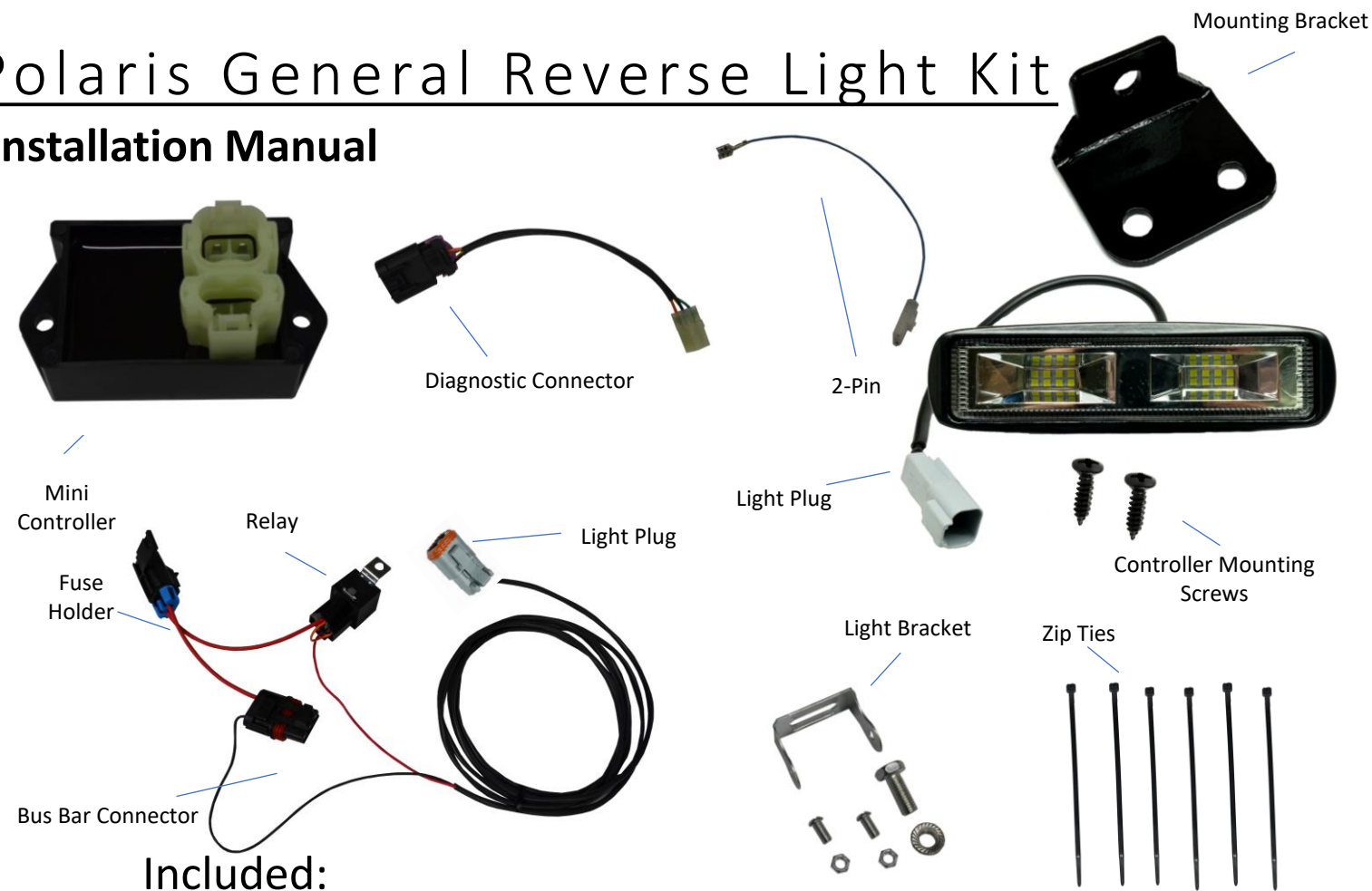


Polaris General Reverse Light Kit

Installation Manual



Included:

Description	Quantity
Wiring harness	1
Relay	1
Fuse	1
Mounting Bracket	1
Light & Bracket	1
Zip Ties	6
Mounting Screws	2
Diagnostic Connector & 2-Pin	1
Mini Controller	1

Required Tools:

Torx T-40
13mm Combination Wrench
Wire Cutter (trimming zip ties)
Philips Screwdriver
Utility Knife

Read entire manual before beginning the installation process.
Disclaimer: Sam’s Backup Lights is not responsible for any damage due to improper installation.

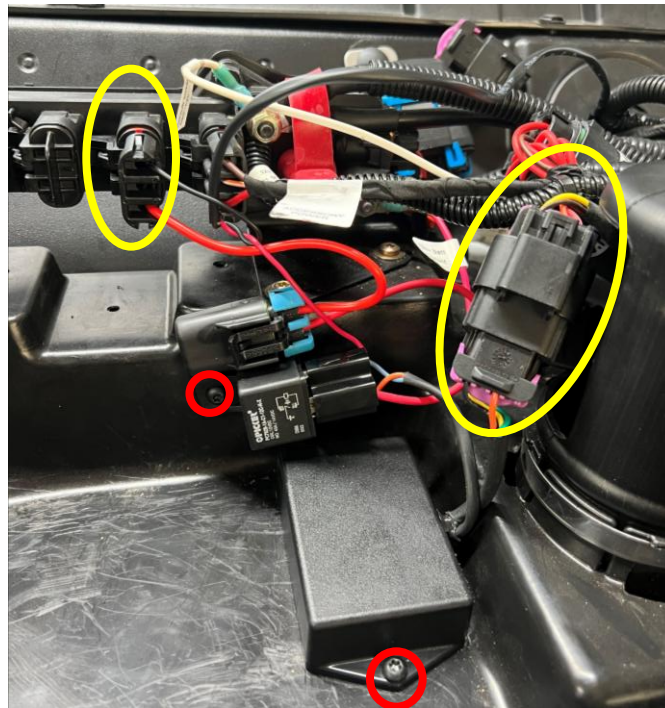
Step 1: Remove Plastics

- 1) Remove hood (twist the two quarter-turn locks).
- 2) Open front window (if applicable), remove the plastic rivets, and lift dash panel.



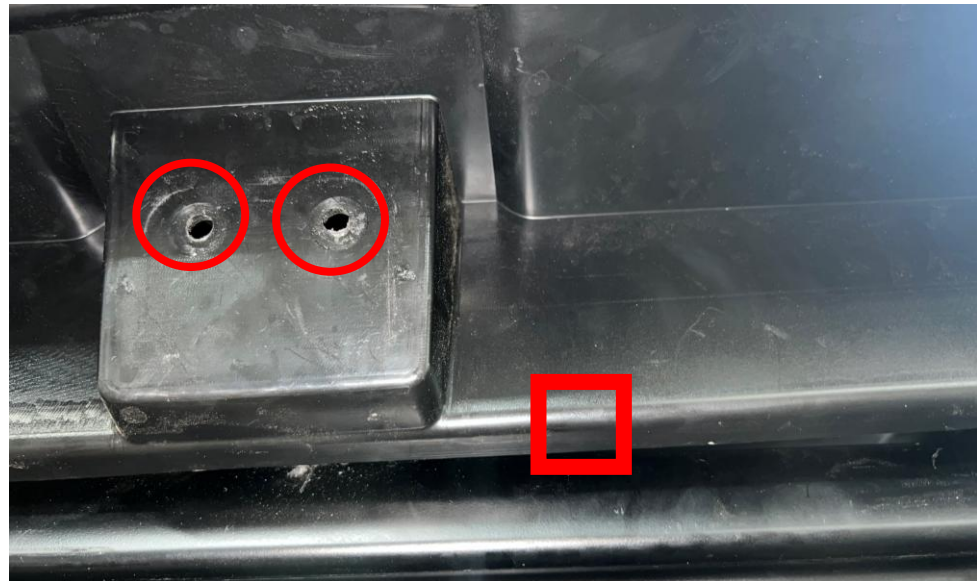
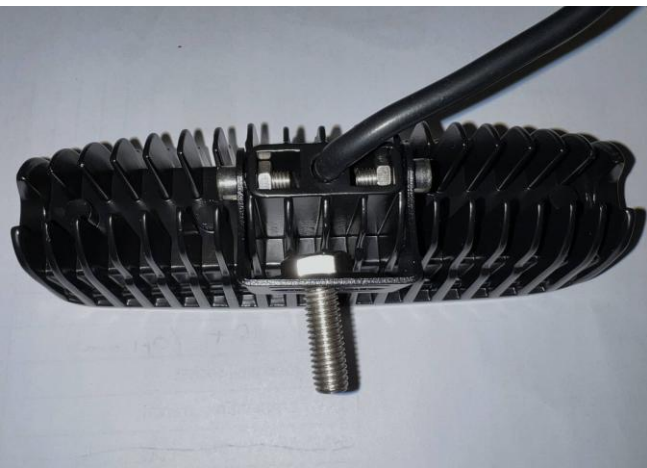
Step 2: Secure & Plug in Controller

- 1) Remove the diagnostic connector cover, plug in connector that comes with reverse light wiring harness, and plug bus bar connector into bus bar.
- 2) Secure controller, relay, and fuse using provided screws.



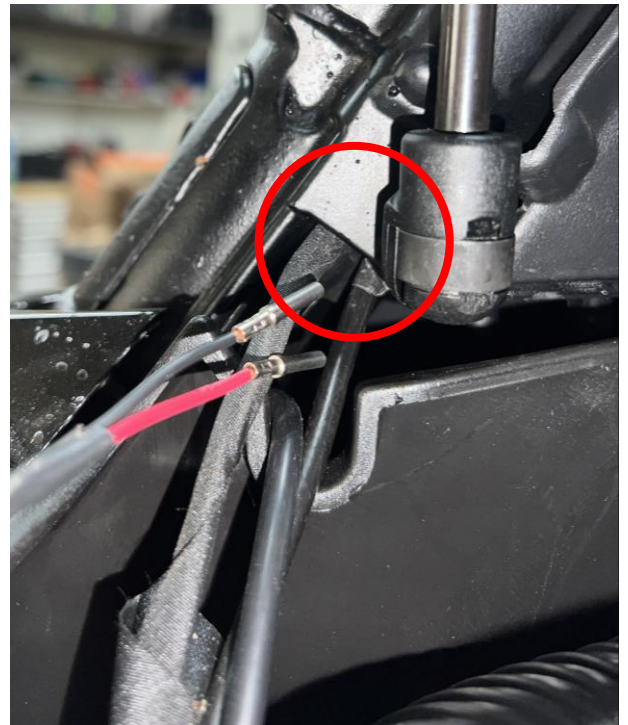
Step 3: Mount Light

- 1) Attach the light to its bracket. Be sure to slide the bolt through the bracket before bracket is attached to light.
- 2) Remove the T-40 bolts and lift the plastic section of the roof.
- 3) Use a utility knife to cut a 1/4" x 1/4" square on the edge of the plastic in order to run the wire into cab.
- 4) Place the wire in cab, reinstall roof, and mount mounting bracket as shown below.



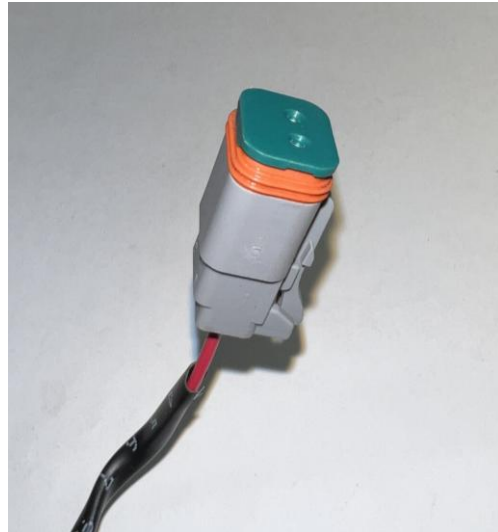
Step 4: Route Power to Light

1) Run the wire through firewall grommet and up the inside of passenger-side pillar (following OEM wiring) until it can be retrieved from inside the hole.

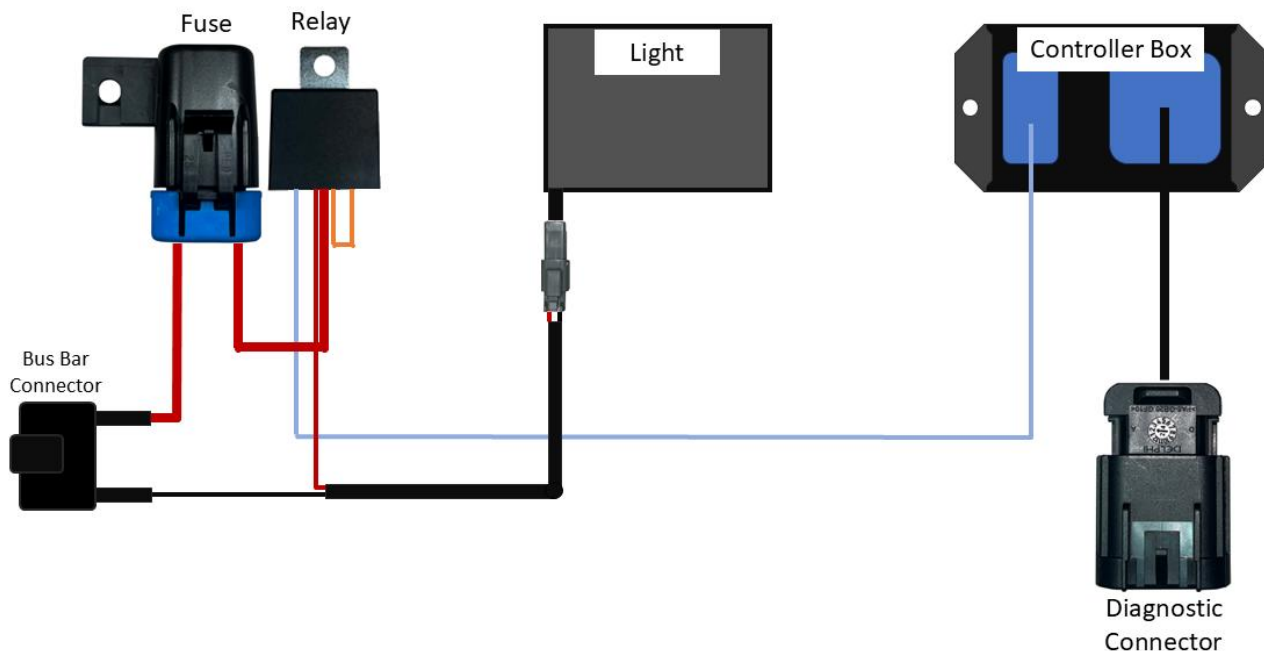


Step 5: Assemble Connector

- 1) Assemble connector by pushing the red wire into the hole marked "1", and the black wire into the "2" hole. Push the wires in until they click into place and lock into the connector. Finally, push the cap onto the top.
- 2) Plug the connector into the light and secure the wire using zip ties.



Automatic Reverse Light



Step 6: Reinstall plastics



Operation of Reverse Lights

Our controllers have been programmed with a manual override feature. Back-up lights may be turned on without the vehicle in reverse.

- **Fully Automatic when shifted to Reverse Gear**

- 1) No programming required

- **Manual Override Function**

- 1) Shift the vehicle into Neutral
- 2) Press and hold the brake pedal for up to 2 seconds. The reverse light will automatically turn on and stay on.

***To turn the light off repeat this procedure.**

Note: If the ignition is turned off while the vehicle is in reverse, or the manual override function is enabled the lights will remain ON until the ECU enters sleep mode (approximately 30 secs to 2 minutes depending on vehicle and ECU type).