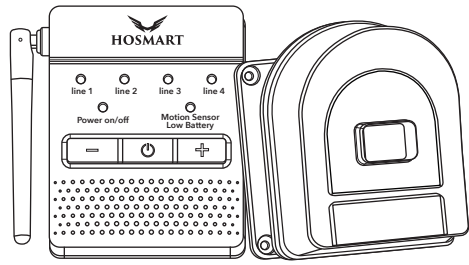
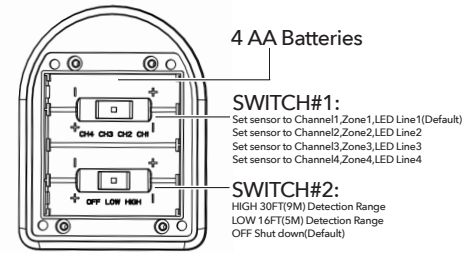
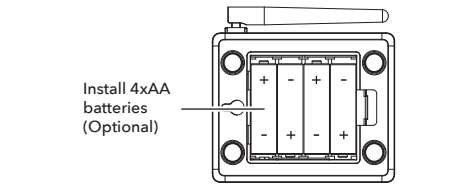


WIRELESS DRIVEWAY ALARM

INSTRUCTION MANUAL MODEL:HY-001



1



c. First, set the sensitivity(HIGH or LOW) and channel in the battery compartment of the sensor. Second, put the batteries in according to the positive and negative signs, then

5

Thank you for purchasing this Hosmart® product. This user manual will help you to familiarize yourself with all the features of your newly purchased product. If you have any questions about the product, please contact us by navigating to www.myhosmart.com, then click Warranty, and fill out the form, we will assist you as quickly as possible service@hosmartmall.com

Overview

The Wireless Motion Alert has a range of up to 1/2 mile (800 meters). It uses a Passive Infrared (PIR) Motion Sensor to detect movement of people and vehicles while allowing small animals to pass through undetected. The Base Station is powered by an AC adapter or 4 AA batteries in the event of a power outage.

6

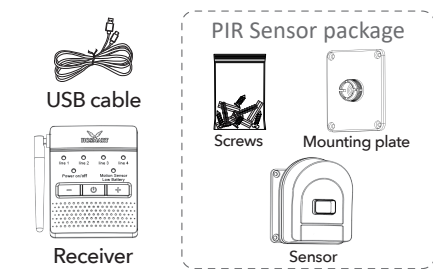
tighten the screws. Third, install the mounting plate, then put it on the wall and fix the mounting plate with screws. Finally, complete the pairing steps of the sensor and the receiver, then it is ready to use.

Pairing steps:

Step 1. Plug in the receiver with an AC adapter or install 4 AA batteries to turn on the receiver. The power indicator lights up in red.
Step 2. Press and hold the power button on the Base Station for 5 seconds until the four numbers flashing red.
Step 3. Set the sensitivity and channel in the battery compartment of the sensor, then put in the batteries (If the sensor is

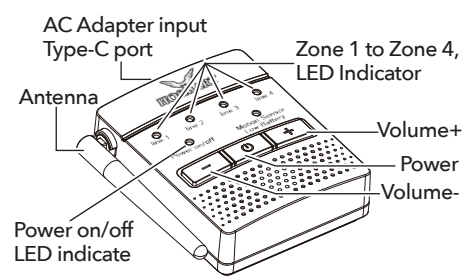
6

What's in the box



Operation & Features

1.Base Station



2

already turned on, wave your hand directly. If it is not turned on, please complete this step) .
Step 4. The receiver will produce a unique tone based on the channel automatically.
Step 5. The receiver and sensor are paired successfully.
d. Test the PIR Motion Sensor by waving your hand in front of the sensor. The Base Station will produce a unique tone based upon the sensors Switch #1 setting.

Note 1: When detecting movements, a sensor will flash red only when assigned to lines 1 and 2, not lines 3 or 4.
Note 2: The sensor will operate for up to 1 year, depending on use.
e. PIR Motion Sensor order of assembly.

7

On/off

To turn the Base Station on or off, hold down the Power button until you hear the on/off tone.The power red light will illuminate when Base Station is on.

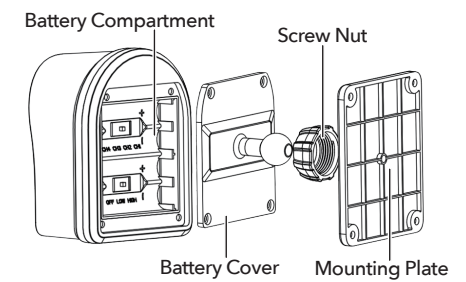
Volume

The Base Station is equipped with adjustable Volume +/- controls. The lowest volume setting mutes the volume. Volume adjustments will be heard on subsequent alarm activations, not while adjustments are being made. Powering off the base station will reset the volume to the factory setting.

Zone/Line 1 to Zone/Line 4 LED Indicators When motion is detected the corresponding Zone LED indicator will flash.

3

Please use the correct screws, when assembling and mounting the sensor, to ensure proper sensor stability and operation.

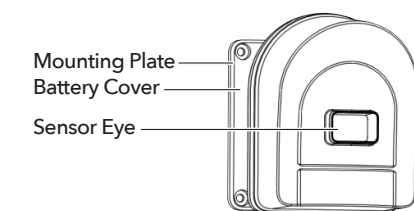


PIR MOTION SENSOR INSTALLATION

a. Mount the PIR Motion Sensor vertically on a solid surface 1-6 feet (0.3-1.8m) above the ground (rotate sensor to access screw holes). The sensor should be able to swivel as needed.

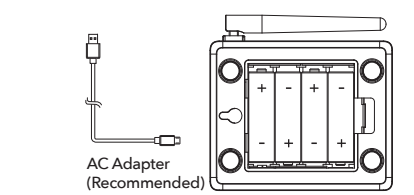
8

2.Passive Infra-Red(PIR) Motion Sensor



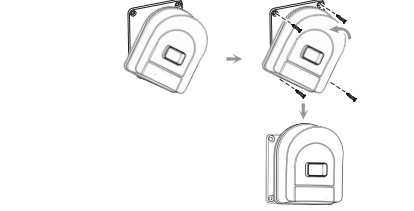
Assembly & Setting

a. Plug in the Base Station.



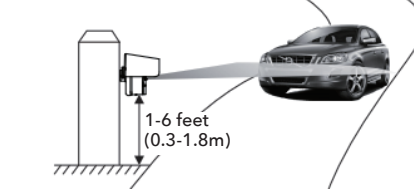
b. 4 AA batteries are optional if necessary. Receiver can also run on batteries as backup in case of power outage for 2 months.

4



Vehicle Alert Installation:

For cars, the best mounting position is about 1-6 feet (0.3-1.8 m) high, between 10-25 feet (3-7.5m) from the road. The PIR sensor detects the movements with heat sources. Please adjust the sensor eye with horizontal angle to the engine of the car.



9

Troubleshooting

● The PIR Motion Sensor operates, but the base station does not respond.

Check whether the BASE battery is correctly placed in the battery compartment, or use the USB port for power supply.

● PIR Motion Sensor is detecting motion only part of the time.

Set the PIR Motion Sensor Switch #2 to the high sensitivity setting (see Page 6). The PIR sensor detects the movements with heat sources. Please adjust the sensor eye with horizontal angle to the engine of the car.

● The system is giving false alarms.

Check for moving tree branches or insects in the sensor window and remove as necessary. PIR Motion Sensors can also be triggered by light shining directly (or reflected) into the sensor window. It is also possible that condensation has built up on the sensor.

10

- This radio is designed for and classified as "General population/ uncontrolled Use"
- DO NOT operate the radio without a proper antenna attached, as this may damage the radio and may also cause you to exceed RF exposure limits. A proper antenna is the antenna supplied with this radio by the manufacturer or an antenna specifically authorized by the manufacturer for use with this radio, and the antenna gain shall not exceed 2dBi by the manufacturer declared.
- DO NOT transmit for more than 50% of total radio use time, more than 50% of the time can cause RF exposure compliance requirements to be exceeded.
- During operation, the separation distance between user and the antenna shall be at least 20cm, this separation distance will ensure that there is sufficient distance from a properly installed externally-mounted antenna to satisfy the RF exposure requirements
- During transmissions, your radio generates RF energy that can possibly cause interference with other devices or systems. To avoid such interference, turn off the radio in areas where signs are posted to do so. DO NOT operate the transmitter in areas that are sensitive to electromagnetic radiation such as hospitals, aircraft, and blasting sites.

This product produced by:
Macross Microelectronics (HK) LIMIT
FLAT/RM KY001 UNIT 3 27/F/ HO KING COMM CENTRE
NO.2-16FA YEEEN STREET MONGKOK KL

15

Wipe condensation from PIR Motion sensor with a cotton swab. Detach the 4AA battery and let the sensor dry inside for a few hours, open to the air. The sensor should correct itself once dry. Check the Sensor Switches on the PIR Motion Sensor (see Switch settings.)

● The system is not getting expected transmission range.

Ensure that the PIR Motion Sensors are vertically aligned, not attached to the far side of a tree, and away from metal objects. Ensure that the Base Station antenna is vertical and has the clearest possible line of site to the sensors. The fewer objects between the devices, the longer the range.

Limited 24 Months Warranty

EXCEPT AS PROVIDED HEREIN, SELLER MAKES NO EXPRESS WARRANTIES AND ANY IMPLIED WARRANTIES, INCLUDING THOSE OF MERCHANTABILITY AND FITNESS FOR A PARTICULAR PURPOSE, ARE LIMITED IN DURATION TO THE DURATION OF THE WRITTEN LIMITED WARRANTIES CONTAINED HEREIN, EXCEPT AS

11

IC STATEMENT

This device contains licence-exempt transmitter(s)/receiver(s) that comply with Innovation, Science and Economic Development Canada's licence-exempt RSSI(s). Operation is subject to the following two conditions:
(1) This device may not cause interference.
(2) This device must accept any interference, including interference that may cause undesired operation of the device.

L'émetteur/récepteur exempt de licence contenu dans le présent appareil est conforme aux CNR d'Innovation, Sciences et Développement économique Canada applicables aux appareils radio exempts de licence. L'exploitation est autorisée aux deux conditions suivantes :
1. L'appareil ne doit pas produire de brouillage;
2. L'appareil doit accepter tout brouillage radioélectrique subi, même si le brouillage est susceptible d'en compromettre le fonctionnement.

A letter from Hosmart

If you have any questions with the unit, please contact us by navigating to www.myhosmart.com, then click **warranty**, and fill out the form, we will assist you as quickly as possible.

E-mail: service@hosmartmall.com

16

PROVIDED HEREIN, SELLER SHALL HAVE NO LIABILITY OR RESPONSIBILITY TO CUSTOMER OR ANY OTHER PERSON OR ENTITY CONCERNING ANY LIABILITY, LOSS, OR DAMAGE CAUSED DIRECTLY OR INDIRECTLY BY USE OR PERFORMANCE OF THE PRODUCT OR ARISING OUT OF ANY BREACH OF THIS WARRANTY, INCLUDING, BUT NOT LIMITED TO ANY DAMAGES RESULTING FROM INCONVENIENCE, LOSS OF TIME, DATA, PROPERTY, REVENUE, OR PROFIT OR ANY INDIRECT, SPECIAL, INCIDENTAL, OR CONSEQUENTIAL DAMAGES, EVEN IF SELLER HAS BEEN ADVISED OF THE POSSIBILITY OF SUCH DAMAGES.

In the event of a product defect during the warranty period, contact the Seller to return the product, along with the sales receipt as proof of purchase date, to the Seller. The Seller will, at its option either correct the defect by product repair without charge for parts and labor; replace the product with one of the same or similar designs, or refund the purchase price. All replaced parts and products and refunded products become the property of the Seller. New or reconditioned parts and products may be used in the performance of warranty service. Repaired or replaced parts and products are warranted for the remainder of the original warranty period. You will be charged for repairs on products no longer covered by warranty.

For all returns, please let us know the purchasing channel and order number. This will speed up the process of handling your return and issuing a refund or providing

12

Register for Product Warranty

Dear Customers,
Thank you for your purchase. Please register a new account on our website to activate your warranty:www.hosmartmall.com.
Please select the **Register** or **Register for Warranty** link, in the upper right corner, then fill out your information in the online form. Please verify and provide the correct order number in the field provided.
Please note: If you do not have a Facebook ID, then you may enter your first and last name in the Facebook * field.
Finally, click **Submit** to activate your warranty.

If you have any questions. please be sure to include your order number, so we can provide you with the best and most efficient customer support.

Best regards,
Sherry

17

you with a replacement. Refunds are not issued for products any longer covered by a warranty. The warranty will not cover replacements in cases where damage or failure is caused by, or attributable to:
(a) acts of God, abuse, accident, misuse, improper abnormal usage, failure to follow instructions, improper installation or maintenance, alteration, lightning, or other instance of excess voltage or current,
(b) any repairs other than those provided by the Seller,
(c) consumables such as fuses or batteries, cosmetic damage,
(d) transportation, shipping or insurance costs,
(e) or costs of product removal, installation, set-up, service adjustment, or reinstallation.

Our goal is for you to have the best possible experience with Hosmart®. We appreciate receiving comments on any aspect of your experience with Hosmart or our products. Please contact us with any problems, before leaving any online feedback, so that we may address your concern.

FCC STATEMENT

Power:5V DC 1000mA
Backup Battery: DC (4)AA for the Base Station.
FCC ID:2AJEM-HY001
This equipment has been tested and found to comply with the limits for a Class B digital device, pursuant to Part 15 of the FCC Rules. These limits are designed to provide reasonable protection against harmful

13

Are you happy with our product?

Please text: Hi Hosmart, I like it, my order number is *** to our email : service@hosmartmall.com Or contact us via facebook page: [@Hosmartofficial](https://www.facebook.com/Hosmartofficial), you will enjoy our VIP treatment.

- Free trial on our new products
- VIP only coupon an promotions
- Free birthday gift for VIP

Not happy?

Please contact us if you have any concerns about the product, prior to leaving any online feedback, so that we may address your concern as quickly as possible. Our customer service support will work hard to put a smile back in your face.

- Resend one new replacement
- 100% full refund

18

interference in a residential installation. This equipment generates uses and can radiate radio frequency energy and, if not installed and used in accordance with the instructions, may cause harmful interference to radio communications. However, there is no guarantee that interference will not occur in a particular installation. If this equipment does cause harmful interference to radio or television reception, which can be determined by turning the equipment off and on, the user is encouraged to try to correct the interference by one or more of the following measures:
-- Reorient or relocate the receiving antenna.
-- Increase the separation between the equipment and receiver.
-- Connect the equipment into an outlet on a circuit different from that to which the receiver is connected.
-- Consult the dealer or an experienced radio/TV technician for help.

This device complies with part 15 of the FCC Rules. Operation is subject to the following two conditions:
(1) This device may not cause harmful interference, and
(2) This device must accept any interference received, including interference that may cause undesired operation.
Changes or modifications not expressly approved by the party responsible for compliance could void the user's authority to operate the equipment.

14

The hosmart Story

We lost our grandmother to an accident in her home. This compelled me to create Hosmart tools for the mature and elderly, in honor of our grandmother, to make homes smarter, safer, and easier to live in.

we hope Hosmart products will bring convenience and peace-of-mind to you and the mature and elderly in your life. We look forward to hearing how our Hosmart product has enriched the lives of you or your senior family members life easier and safer.

William King
Inventor

19