

# AGPTEK A02 USER MANUAL



## Quick Links

[Quick Guide](#)

[Basic Operation](#)

[Lock Screen](#)

[Transfer Files to Your Player](#)

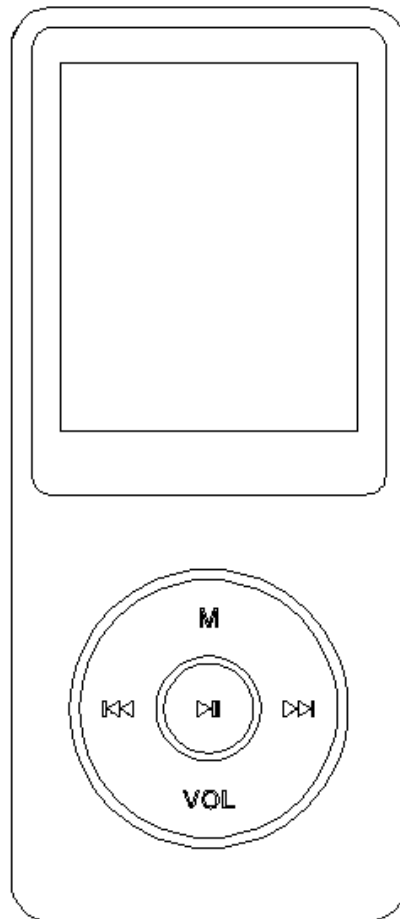
[Video](#)

# Table of Contents

Table of Contents	
Product view	
Quick Guide	
Power On and Off	
Charging the Battery	
Basic Operation	
Lock screen	
Delete folder	
Play Your Music	
Home Screen & Main Screen	
Return	
Rewind/Forward	
Shuffle and Repeat	
Play Mode	
Volume Adjustment	
Resume Playback	
Transfer Files to Your Player	
Video	
Radio	
Recording	
E Book	
FAQ and Supports	
How to use the playlist	
Add bookmark for your audio book	
How to sort you music or audio books - before copying to the player	
How to load tons (2000 up) of Music	
to load APE music	
Format Supported	
to sort music in SD card	
Can I play FLAC, or other music formats	
Multiple audiobooks sorted by same author	
Troubleshooting	

# AGPTek Longevity Music Player

## A02 User Manual



Please contact us via [Leo@agptek.com](mailto:Leo@agptek.com), when anything comes to your mind, we urge to turn this little thing into the best music player in the world and in your hand.

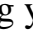
## Index

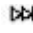
Quick Guide .....	4
Power On and Off .....	5
Charging the Battery .....	6
Basic Operation.....	6
Lock screen.....	6
Delete folder .....	6
Play Your Music .....	6
Home Screen & Main Screen.....	6
Return .....	7
Rewind/Forward .....	8
Shuffle and Repeat .....	8
Play Mode.....	9
Volume Adjustment .....	9
Resume Playback .....	9
Transfer Files to Your Player.....	10
Video.....	10
Radio .....	11
Recording.....	12
E Book .....	12
FAQ and Supports.....	13
How to use the playlist .....	13
Add bookmark for your audio book.....	14
How to sort you music or audio books - before copying to the player .....	15

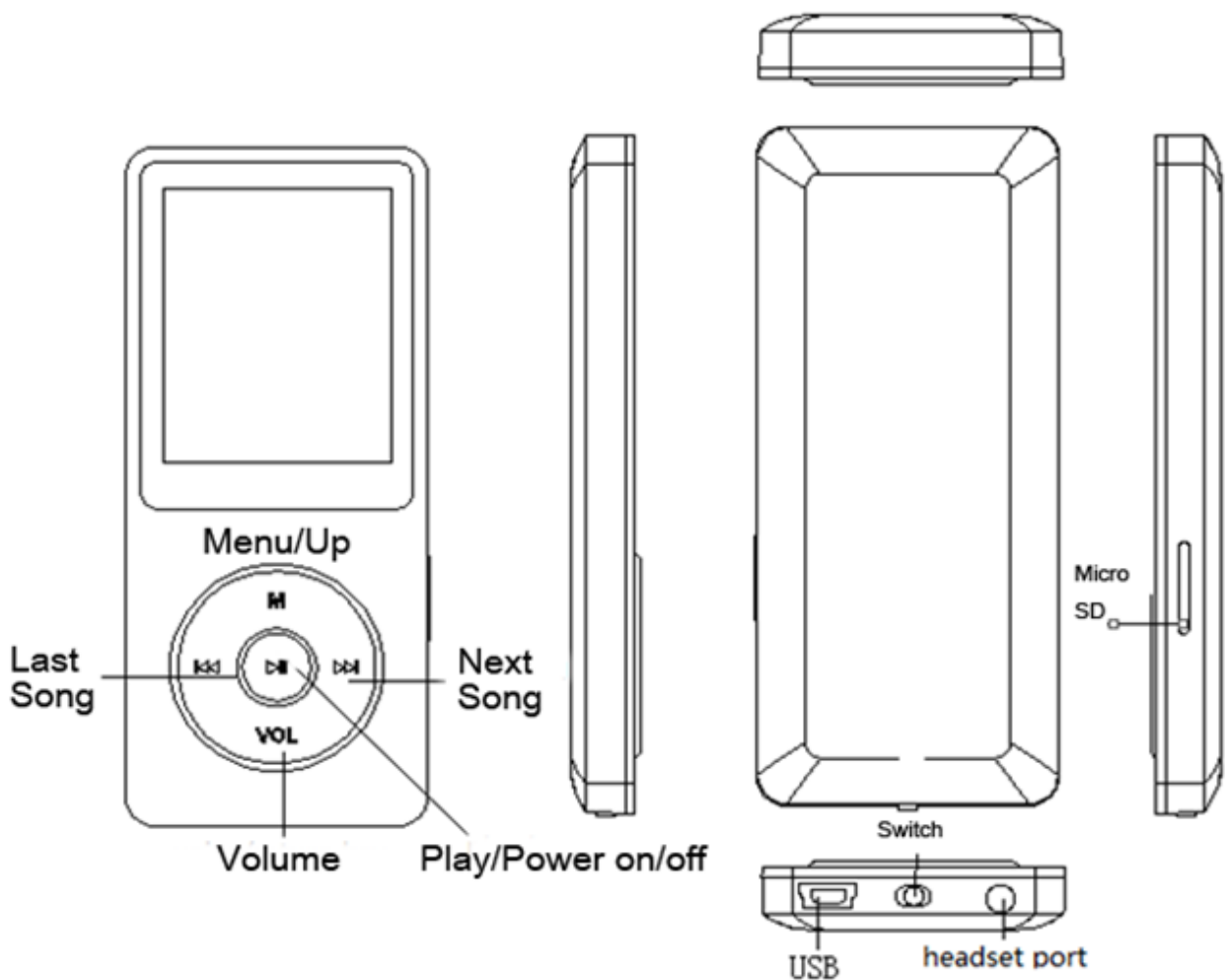
How to load tons (2000 up) of Music .....	16
How to load APE (lossless) music .....	16
Format Supported .....	17
How to sort music in SD card by artists, albums and genres .....	17
Can I play FLAC, or other music formats? .....	18
Multiple audiobooks sorted by same author .....	19
Support and Troubleshooting .....	19

## Quick Guide

Plug earphone into the jack on bottom right of your device then slide the power switch to the right to turn the player on. The AGPtEK logo will appear on screen.

Each time you press the button , it will bring you to one of its nine different functions, including Music, Video, Radio, Pictures, Recordings, EBook, Folder, Tools, and Setting.

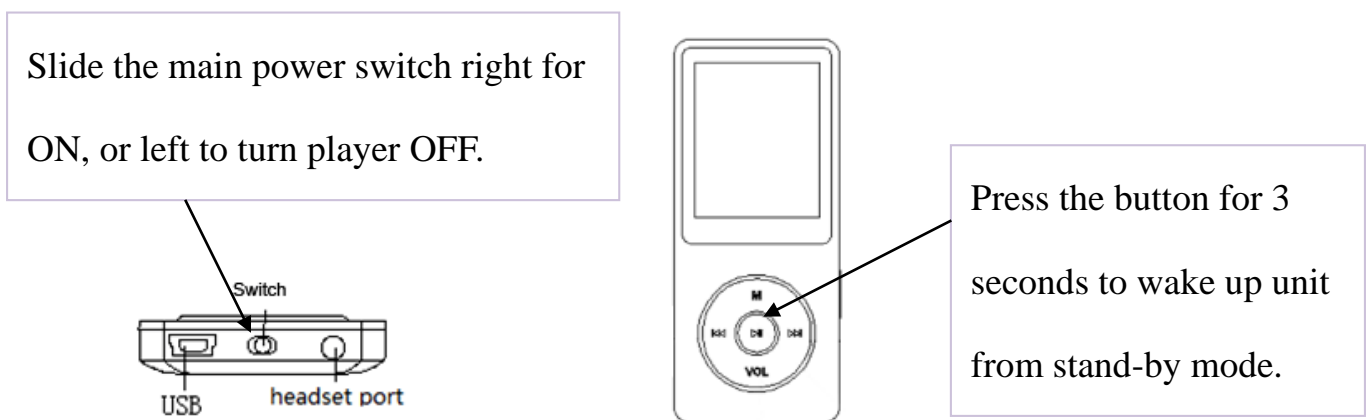
*Note: the player will switch to sleep (stand-by) mode if inactive for a few seconds. To wake up the player, press and hold the round  button in the center of shuttle.*



## Power On and Off

Turn the slider switch(Main Power) at the bottom of the player to to the right.

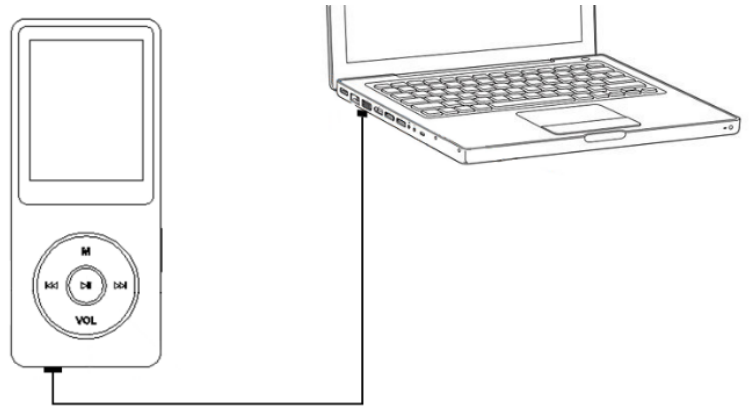
1. Standby mode. While the slider switch in ON position, pressing the central button for about 3 seconds to turn off your player. Please kindly note, the device is not really powered off but fallen into standby mode, and the battery will be consumed still. To turn off your player totally, please turn the slider switch(Main Power) at the bottom of the player to to the left.
2. If you have been fallen into standby mode with the slider switch in ON position, you can wake up the unit by pressing the center button for three seconds.
3. When the player is on the song playing screen, press the button VOL and then press the center button to turn off it. The next time you switch back on the player, it will start from the last position it left off.



*Note: If you cannot switch the player on, please make sure the slider switch is in ON position (right side).*

## Charging the Battery

1. Plug one end of the provided micro USB cable into the USB port of a computer.
2. Plug the other end of the cable into the micro USB port on your device.



3. When the device is fully charged, disconnect the cable from your device by pulling it straight outward.

## Basic Operation

### Lock screen

Tap the button  and M at the same time to lock the screen. Repeat to unlock.

### Delete folder

Selecting the Folder icon on main screen with central button, and then you can delete folders as you need.

Tap the item you want to delete with right arrow button, and then choose “Delete”.

## Play Your Music

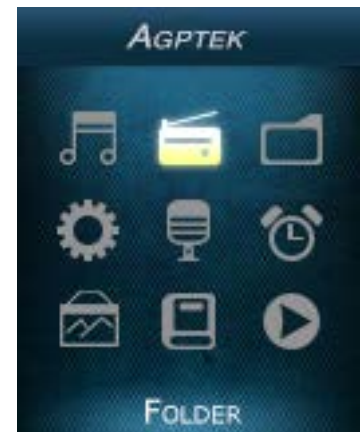
### Home Screen & Main Screen

Power on to get access to its main screen; when it's on music playing interface, tap the M button to access to its home screen. Selecting the Music icon on main screen with central button will display the following submenu:

- All songs – played in name order
- Artist – played in artist's name order



- Resume – will take you to a song or audiobook that you have been listening to previously.
- Albums – played by folder name
- Genre – played by genre
- Album art – after viewing, press the Vol button to go back
- Playlists – three lists
- Update card Data
- Local folder – internal memory
- Card folder – external, Micro SD memory card



Main Screen

## Return

### 1. Return to main screen

When the player is on music playing screen, there are two ways for you to return:

- Return with the button “M”

Press “M” button, a related list will show with the item “Home”, choose it and then you will return to the main interface.

- Return with the button **VOL** and **⏮**

Press the button **VOL** to return to the last grade, press the button **⏮** continually to return to the main interface.

*Note: While playing music, press the M button to switch to Home screen then press **⏮** to go back to music.*


### 2. Return to music playing screen


- Choose the item “Now playing” under “Music” or tapping the right arrow button and then choose “Now playing” while the music is playing under backstage.
- Tapping the right arrow button and then choose “Last played” while the music playing

is for PAUSE.

## Rewind/Forward

Use the button  /  for rewind/forward;

Hold button  to fast rewind, tap to the previous song or audiobook chapter;

Hold the button  to fast forward, tap to the next song audiobook chapter;

Tap the central button  to play or pause.

## Shuffle and Repeat

- Shuffle your music through the button “M”

You can choose the song from “Music” or “Folder” to get into the music playing screen and then push the button M, you will find the item “Shuffle” under “Play mode”.

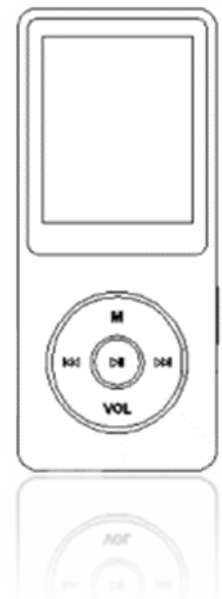
*Note: if you play the song through “Music”, it will only shuffle the songs in the folder which your music is included. If you play the song through “Folder”, it will shuffle songs by folder.*

- Shuffle your music through “Setting”

You can also shuffle all your songs (internal card or external card) under play mode by pressing the button “Setting” on main screen. When “Shuffle” is for on in this situation, you can shuffle your songs in two ways:

- Back to the main interface, and then choose “Music” or “Folder” to shuffle your songs
- Choose with the “Play music from...” under play mode of “Setting”, please note that the songs you shuffle are from “Music” in this situation.

*Note: The condition of shuffle in music playing screen are always the same as it's in the “Setting”*



- To repeat your songs

You can repeat your songs from the music playing screen by pressing the button M> “Play mode” > “Repeat”, and you can also repeat by pressing “Setting”> “Play mode” > “Repeat”. The player would only play the first 10 seconds of a track and then skip if you select option “View playing”.

*Note: if you play songs through “Music”, it will only repeat in the folder which your songs is included. If you play songs through “Folder”, it will repeat by folder with the option “Repeat all”. The song you choose with the option “Repeat” under “Setting” are from “Music”.*

## **Play Mode**

You can choose between “Easy mode” and “Normal mode”.

When the player is on the music playing screen, it comes to easy mode by pressing the center button (please press the central button for about 2 seconds). Again to back to normal mode.

*Note: In easy mode, all the buttons are for the tracks and volume control. Thus making it a short cut for volume control.*

## **Volume Adjustment**


Press and hold the “VOL”. When you see the volume icon, press “M” to raise or “Vol” to lower the volume.

## **Resume Playback**

- Resume option

If you are in the “Music” menu, select “Resume” to start playing from where you left off

- Resume with power on/off

Press the button VOL to exist from the main playing screen and push the central button .

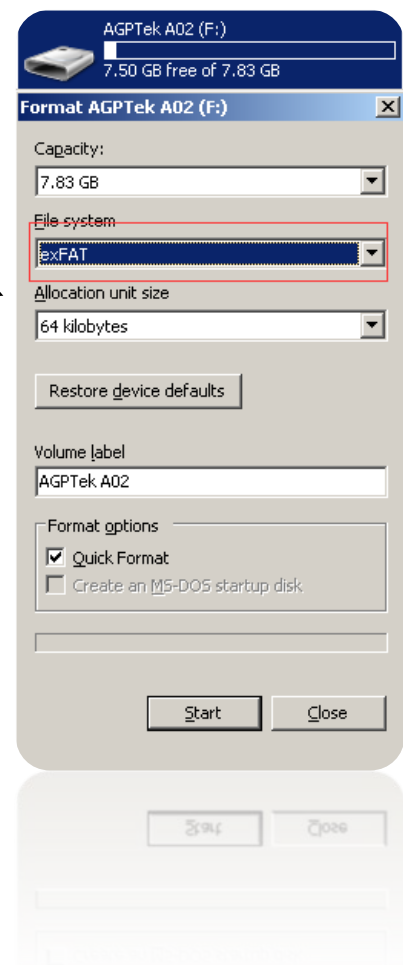
for three seconds to switch off the player, the next time you turn on the player it will start from where you left off.

## Transfer Files to Your Player

1. Connect your device to the computer with the enclosed Micro USB cable the mp3 player will show up as a removable disk as soon as the computer recognize it and then just drag files into the mp3 player. If your computer cannot recognize the player, the enclosed Micro USB lead may has problem please use another Micro USB lead to connect it to your PC.
2. When your device is showed as a removable disk, you can put the files saved on your computer to your player. When the slider is "off" the unit will power up when connected to a USB port, and then go dead when disconnected. Slide the switch of the opposite position it will power up OK.

Right-click your device on computer, and then choose the item “Format” with exFAT option

*Note: if there is the “Disk error” showing for your device, please connect your player with the computer, and then format the disk with “exFAT” option.*







## Video

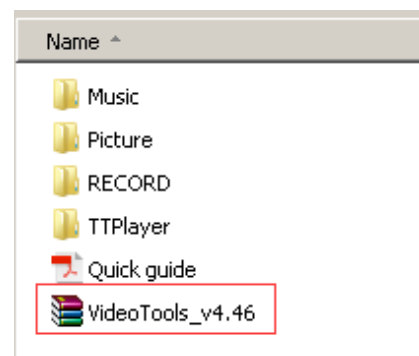
- Back to menu

- When is on video playing screen, press VOL or under other states press "⏮" for short time to return to last menu.
- Press "M" button, a related list will show with the item "Home", choose it and then you will return to the main interface.
- Playing/Pause: tap the playing key
- Fast rewind/fast forward: long pressing the last-song/next-song
- Back to menu: in music play mode press VOL or under other states press "⏮" for short time to return to last menu.

*Note: The product only supports 160\*128 video, you may convert video files to this format by the tools included in the device.*



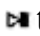
- To use the "amvtransform" included in the device

Install the program on your computer first, and then press the icon  to choose the file you want to convert on your computer, and choose the icon  to put the converted video in the file on your A02 player. Choose the icon  to start convert, the bottom will show the progress of converting for the icon , it will be ok until it showed 100%.



## Radio

- Manual tune and Auto tune

You can adjust the radio through "Manual tune" or "Auto tune", press the button  and  for rewind and forward search one by one, and long press the button for searching automatically, then press the button  to stop.

- Set the FM radio with the button "M"

While on radio playing screen, press the "M" button to view a related list. Some of the

items displayed are “Home”, “Previous menu”, “Save to preset”, “Tuner region” and so on.

- Choose the item “Home” to main interface (You can also press VOL button and then press "⏮" continually to return the main interface.). Choose “Previous menu” to back up to the last menu.
- Choose the item “Start FM radio recording” to save the radio you want to record, and you will find it in the item “FM recording”.

*Please kindly note that you can only listen to mono radio station on this player.*

## **Recording**

From the “Main” menu screen, select “Recording”. Press the ▶|| button to enter.


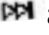
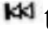
The following functions are displayed: Start Voice Recording, Recordings library, Storage, Recording Format and Record Settings.

- Select a format from MP3, WAV or ACT
- Scroll to “Start Voice Recording” to start your recording
- To pause or stop recording, press ▶||
- To save, press “Vol” then select answer yes to save
- To play, go to “Recordings Library” and play as music

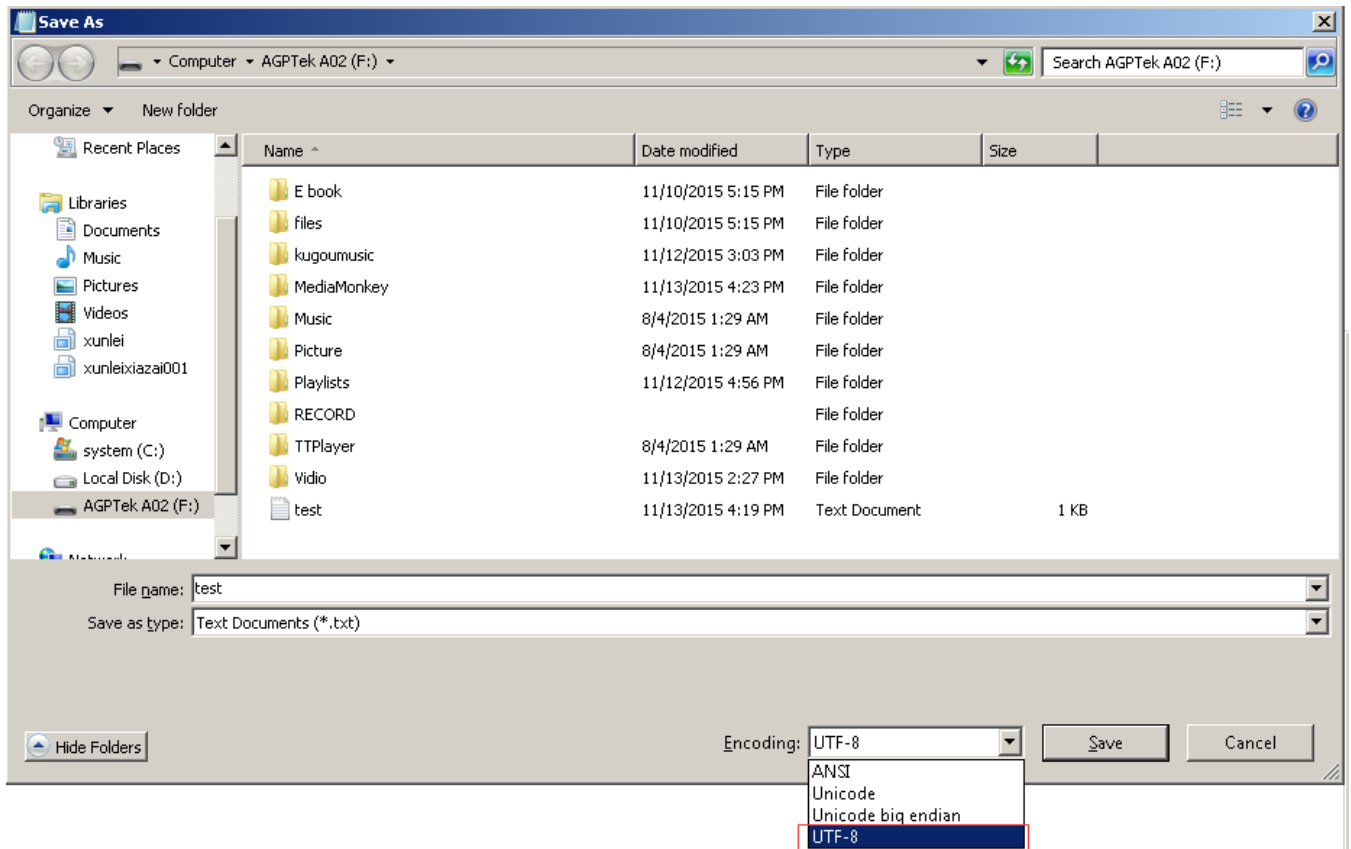
*Note: If you choose “Storage” with the item “Internal Memory” and then start recording, the recording file will be saved in internal memory; if you choose “Storage” with the item “External Memory” and then start recording, the recording file will be saved in external memory.*

## **E Book**

*Please note: Only “txt” format is supported for eBooks.*

From main menu, press the button  to enter E book function. Press the button  and  to turn the page up/down.

*Please note: if you can't read your txt document through E book, connect your player to the computer, and then choose the file for the item "save as", select the code as "UTF-8" and save. Copy the txt file to E-Book folder and it will back to normal condition for your reading.*



## FAQ and Supports

### How to use the playlist

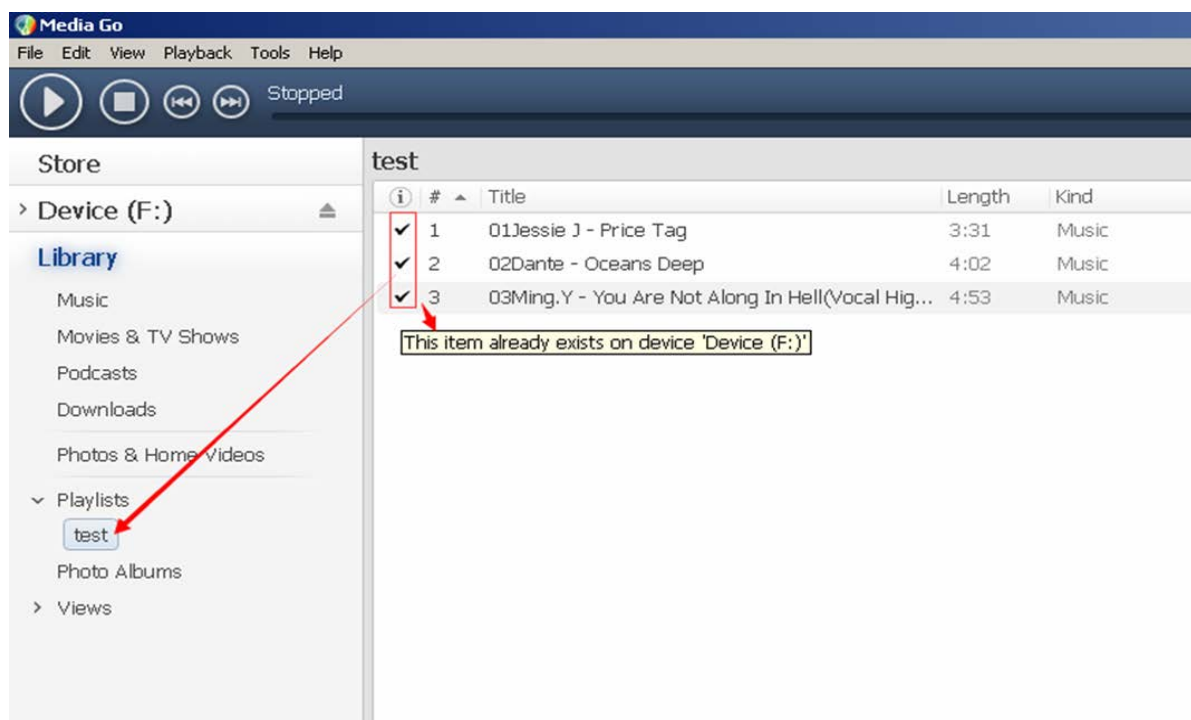
- To use the preset playlist.

Press the button and then choose the option "Add to playlist" for the song you want to operate. There are 3 items prepared for you, including "Playlist on the go [1]", "Playlist on the go [2]" and "Playlist on the go [3]", you can add the song to any one of these three as you like.

- To create the playlist by yourself

Editing Playlist by media player could be painful, no matter by iPod or others. There is a free program called Media Go. It's the easiest program to use for transferring playlists to the AGPTek. Just create your playlists in Media Go and then right-click its name and select 'Add playlist to X :( Which is your MP3 player's disk) '. (You can download it at <http://mediago.sony.com/enu/>)

After sending your playlist and music to the player, you may find it in “Music”.



## Add bookmark for your audio book

While in audio playing mode, tap the “M” button to access to the submenu. From the list that appears, choose “Bookmarks” with the option “Add bookmark”.

- Bookmarks are marked by the stopping time as “hh:mm:ss”. The next time this song is played, you press the M >bookmarks >.go to bookmark, and choose the bookmark, you could go back to the point you marked last time.
- Maximum number of bookmarks supported by each audio file is 10. Additional



bookmarks will override the ones set previously.

- To find saved bookmarks, select “go to bookmark”, found under item “Bookmarks”.

Select “Delete bookmark” to delete it.

## **How to sort you music or audio books - before copying to the player**

- Sort by name in computer

Sort and arrange your music by name on the computer. This will give it the highest priority. Before copying the files from your computer to the player, please arrange them in the correct sequence. Sorting is done by name (ASCII) and not by #, as in the sample below:

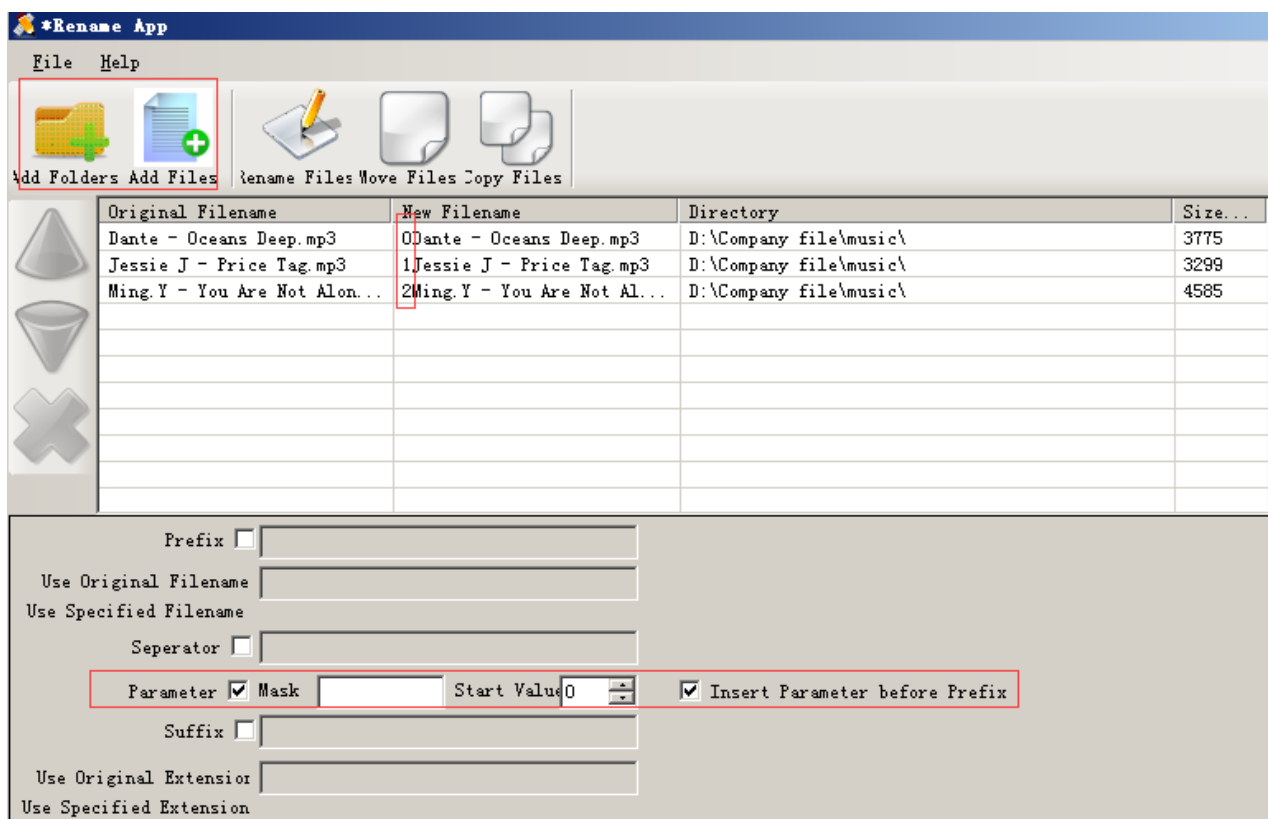


Name ▲	#	Title	Contributing artists	Album
0Dante - Oceans Deep				
1Jessie J - Price Tag			Jessie J	Who You Are
2Ming.Y - You Are No...				

If the file order is sorted by name BEFORE you copying them into the player, they would be right order. To play your newly copied music on the player, open the “Music” folder.

- Rename Music Files

If your music is not sort by the right number, use the application “Renamer” to sort your music by number. Download Renamer on the website (<http://renamer.en.softonic.com/>), and then choose the item “Add folders” or “Add files” to add your music into list. For more details, please kindly check the link).



*Note: To check out the arranged music you have done, you need to open the “Folder” on the main interface of your player, and then you can enjoy your music as the arranged order.*

## How to load tons (2000 up) of Music

With the SD card inserted in your PC, create separate folders for each artist on the card.

Drag and drop related songs into each related folder.

Make separate folders in card and drop your tracks into them.

*Please kindly note that the player can only see a max of 4000 tracks.*

## How to load APE (lossless) music

An entire multi-track audio CD may be ripped to a single audio file and a cue sheet.

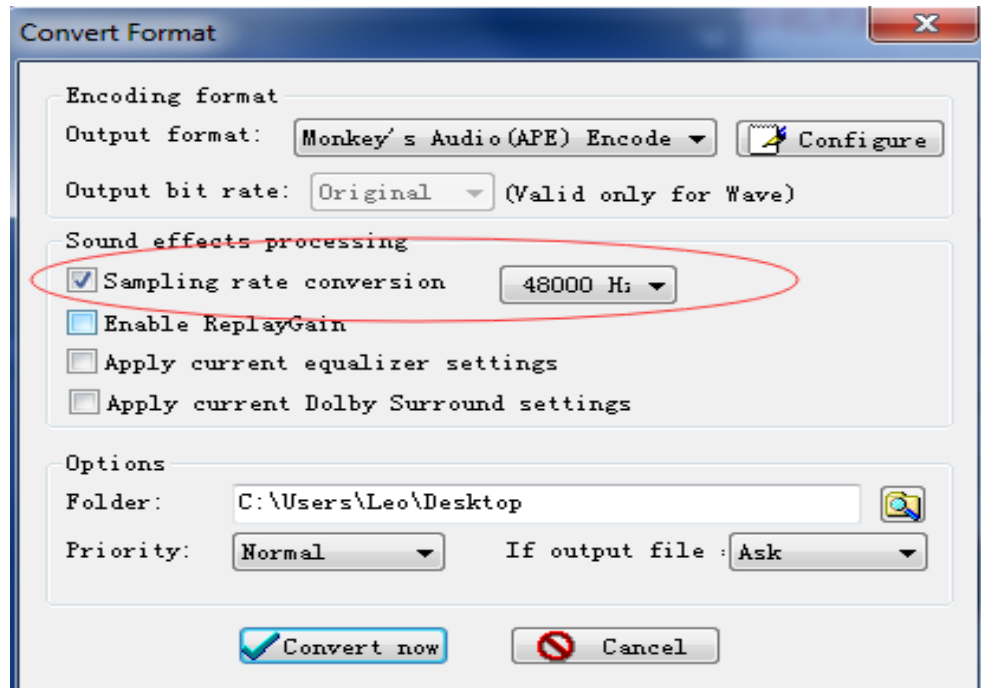
However software audio players and hardware digital audio players often treat each audio file as a single playlist entry, which can make it difficult to select and identify the individual tracks. A common solution is to split the original audio file into a series of separate files, one per track.

Step 1; Download TTplayer via <http://images.agptek.us/image/TTPlayer.rar>. And then add your APE music into TT player.

Step 2; Select the music you need to convert, and then right click, choose “Convert Format”.

Step 3; Now Choose “Monkey’s Audio (APE)” and sampling rate conversion from 44000 or 48000 Hz, and then “Convert now”

Step 4; when the conversion is finished, copy the split APE music into your MP3 player.



## Format Supported

music format	MP3/WAV/APE/WMA/FLAC etc.
Video format	AMV (converted video)
Picture	JPG/JPEG/BMP
E-book	Support TXT
FM radio	Support Radio
Lyrics display	Support LRC Lyrics
Recording	WAV

## How to sort music in SD card by artists, albums and genres

1. Insert your micro SD card into the player
2. Find “Folder” icon and select it. Select “Card folder” from the list that appears. You now can select and play songs that have been moved to SD card.

3. Press the button **VOL** to exit from the song screen and press the button **⏮** to go back to the main menu.
4. Press the 'music' icon and you can see all the tracks on your micro SD card and sorted by artists, albums and genres.

*Note: The 'Music' option can only show music on the internal memory or the card memory but not a combination of both.*

### Can I play FLAC, or other music formats?

You can play FLAC or other audio formats. However, the music file can only be played within the ranges listed below:

MP3	MP1	Bit rate:32kbps---448kbps
		Sampling rate:8KHz---48KHz
	MP2	Bit rate:8kbps---384kbps
		Sampling rate:8KHz---48KHz
	MP3	Bit rate:8kbps---320kbps
		Sampling rate:8KHz---48KHz
WMA		Bit rate:5kbps---384kbps
		sampling rate:8KHz---48KHz
OGG		Bit rate:Q0--Q10(20kbps---499kbps)
		sampling rate:8KHz---48KHz
APE		Bit rate: Fast\Normal Compression(800kbps-1000kbps)
		sampling rate:8KHz---48KHz
FLAC		Bit rate:L0--L8(1000kbps-1200kbps)
		sampling rate:8KHz---48KHz
WAV	IMA-ADPCM	Bit rate:32kbps---384kbps
		sampling rate:8KHz---48KHz
	MS-ADPCM	Bit rate:32kbps---384kbps
		sampling rate:8KHz---48KHz
	PCM	Bit rate:128kbps---1536kbps
		sampling rate:8KHz---48KHz
AAC-LC		Bit rate:(8kbps---320kbps)
		Sampling rate:8KHz---48KHz
ACELP		Bit rate:5kbps---64kbps
		sampling rate:8KHz---16KHz

You may convert the music by TTplayer which is included in the device of ape file, thus making them the playable range.

Select the music you need to convert, and then right-click, choose “Convert Format”. Choose “Monkey’s Audio (APE)” and sampling rate conversion from 44000 or 48000 Hz, and then “Convert now”

### **Multiple audiobooks sorted by same author**

The player arranges audiobook in the following order; author, name of book then followed by sections or chapters.

In order to keep different book titles written by the same author in correct flowing order, create a separate folder for each book title. Keep all books by same author under the author’s name. The player will arrange titles of each book written by the same author separately and keep the chapters in chronological order within the correct audiobook. For example: (Author Smith has two books, Happiness and Dealing with Loss)

Smith > Dealing with Loss > section 01, 02, ....

Smith > Happiness > section 01, 02, ....

Once you have finished listening to Dealing with Loss, the player will start playing the next book, Happiness.

### **Support and Troubleshooting**

- If the device is frozen, turn it off and then restart
- If the device only plays each song for 10 seconds, turn off the slideshow feature, or you may restore the player to factory’s setting (found in setting)
- If the device doesn’t turn on
  - Turn the slider power switch to off (left)
  - Connect the player to your computer

If the player still can't be used after charging, please contact with our customer service。

- Serious Noise

- Dirt will cause noise. Inspect the headset and clean if necessary
- A damaged music file may cause serious noise. Try another song to test

- No sound heard from headset

- Please check whether the voice volume is setting up at 0
- Please check if there is any problem about the headset connecting

- Couldn't play audio books music

If the audio books' format is audible, you may use the tools below to convert it.

[http://download.cnet.com/Free-AAC-to-MP3-Converter/3000-2140\\_4-76060139.html](http://download.cnet.com/Free-AAC-to-MP3-Converter/3000-2140_4-76060139.html)

or <http://toptitleweb.com/howtos/convert-aax-to-mp3.html>

7. If the device could not recognize a Micro SD card, check if you switch from local folder to card folder.