

Installation Manual



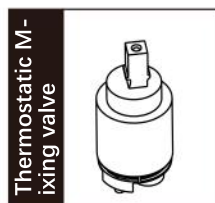
Please do not hesitate to contact us with your questions, concerns and/or problems, we're here to help.

Email address: Backnets@126.com



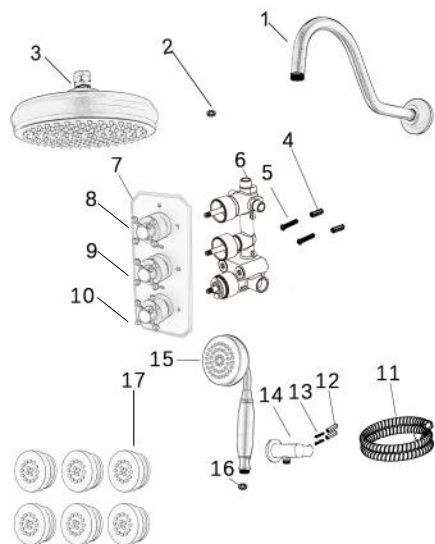
Thermostatic valve

Brass material, strong and durable
Retro styling



- | | |
|--|--------------------|
| 1. Shower arm | 13. Tapping screws |
| 2. Gasket | 14. Shower holder |
| 3. Shower head | 15. Shower head |
| 4. Setscrew | 16. Spacers |
| 5. Tapping screws | 17. Body spray |
| 6. Valve Body | |
| 7. Panels | |
| 8. 3-function control handle | |
| 9. Flow control switch | |
| 10. Cold and hot water control switch (with constant temperature lock) | |
| 11. Flexible hose | |
| 12. Secure the screws | |

DIAGRAM AND PARTS LIST

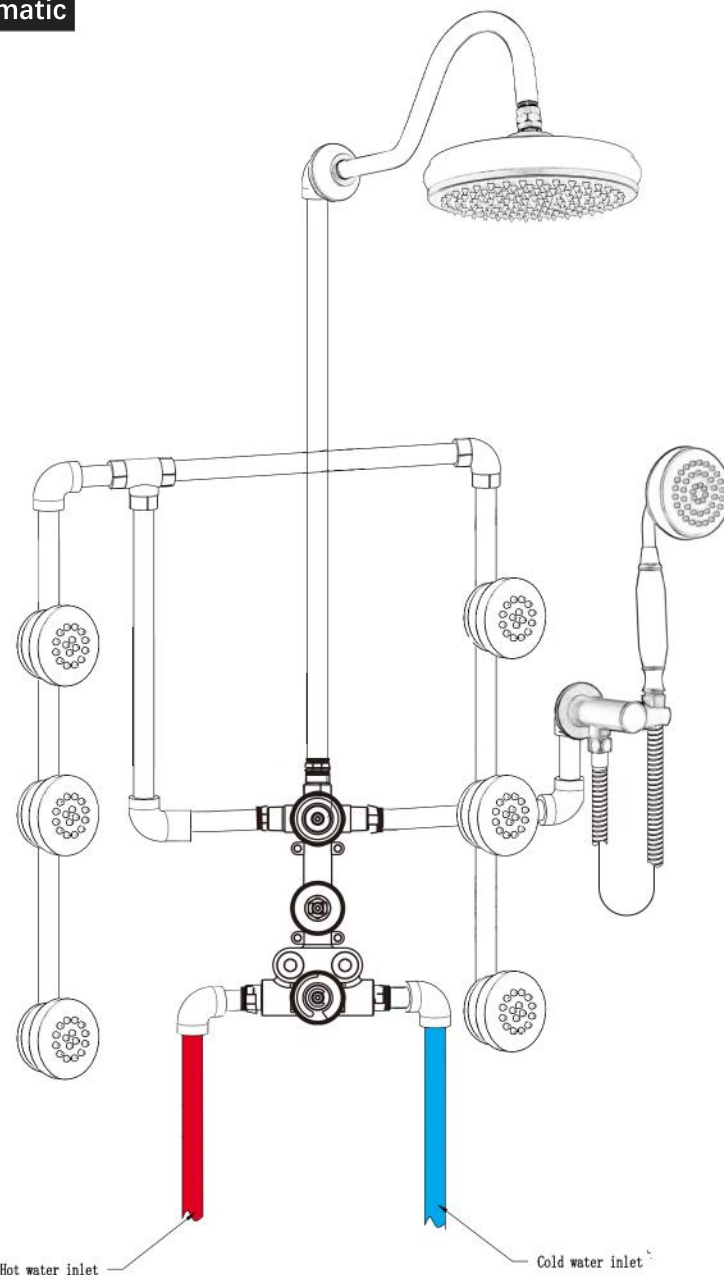


RECOMMENDED TOOLS

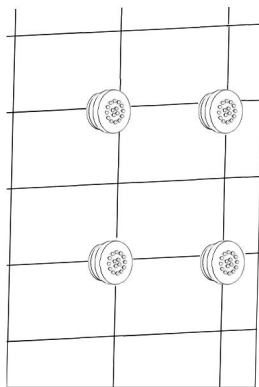
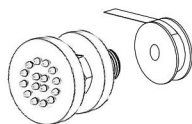
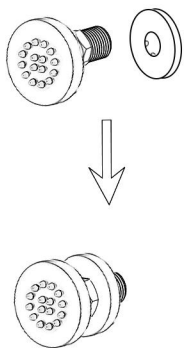


Allen key Philips Screwdriver Electric drill Adjustable wrench Pipe tape Eye protection Flashlight

Pipeline Schematic



Install steps of Body Spray



1. Attach the cover plate to Body Spray.

2. Apply Teflon tape to threaded tail of the body jets.

3. Use a wrench to screw the jet heads clockwise into the body spray outlets.

Important notice

BACKNETS guarantees to the original consumer purchaser that you will receive free replacement due to defects in materials or workmanship during the warranty period;

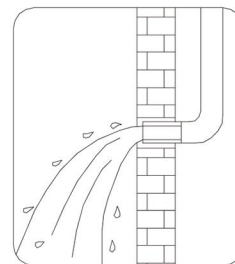
1. For commercial purchasers, the warranty period is **two(2)years** for BACKNETS products from the date of purchase. For homeowner purchasers, **five (5)years** from the date of purchase;

2. This warranty is non-transferable.

This warranty does not cover BACKNETS products purchased from unauthorized sellers.

Email address: Backnets@126.com

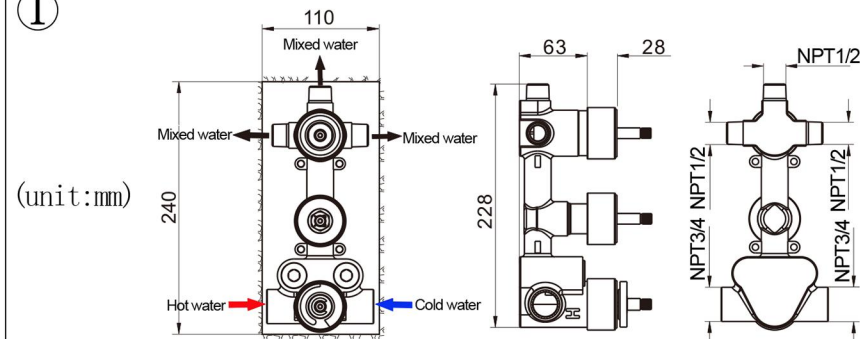
INSTALLATION STEPS



PRECAUTIONS FOR INSTALLATION

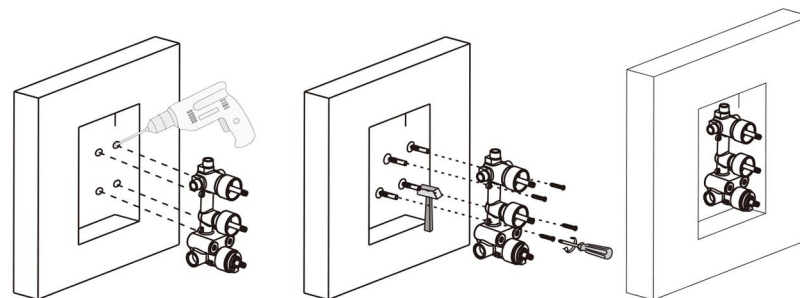
- Water pressure: 0.05MPa~0.5MPa
- Water supply line must be "hot water on the left, cold water on the right"
- Before installation, water must be released to flush the pipe sediment to prevent sediment blockage affecting normal use.
- After pipe connections are complete, a leak proof test must be conducted to check that all connections are properly installed.

①



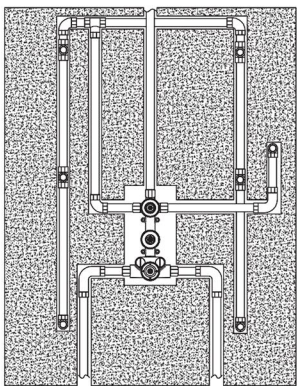
Slot on the wall according to the size of the valve body. Recommended length is 240mm, width is 110mm and depth is 70-85mm.

②

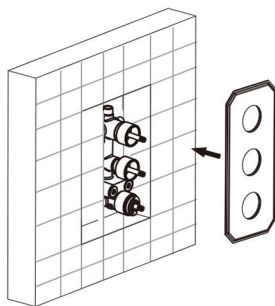


Drill 4 fixed holes in the wall according to the product size, Hammer the expanded screw in the 4 drilled holes, Position the valve body on the 4 screws, use a phillips screwdriver to tighten the 4 self-tapping screws, fix the valve body on the wall.

③



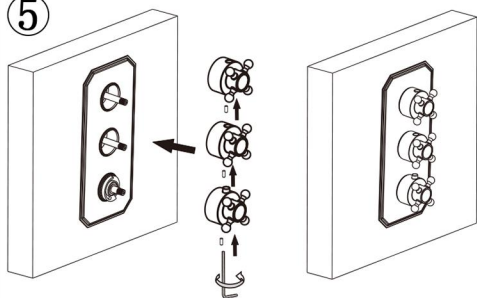
④



Connect all the pipes to check leakage, confirm no leak occurs when turn on water.

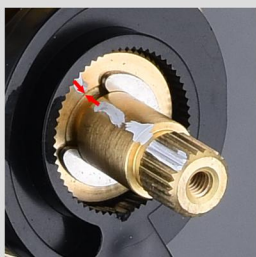
Cover with decorative panels.

⑤



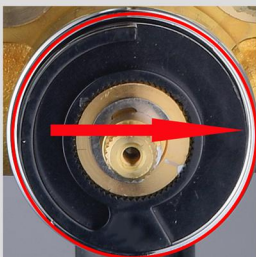
Install the handwheel in the direction shown in the picture above and lock it with hexagon screws.

PRECAUTIONS FOR INSTALLATION



①

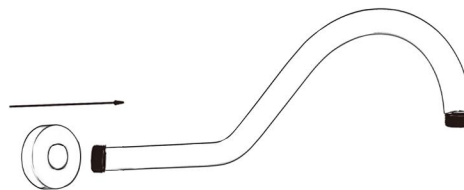
Align the marks on the temperature valve stem.



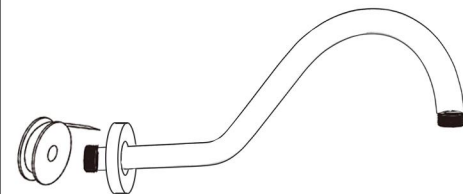
②

Sleeve the plastic ring onto the valve stem with the "C" shape opening facing the right.

Install shower arm and overhead shower



1. Set the decorative cup on the shower arm.



2. Roll the teflon tape on the thread.

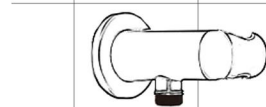


3. Tighten the shower arm clockwise on the water outlet hole of the shower arm. Then put the overhead shower on the shower arm.

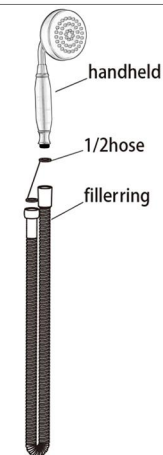
Install shower seat



1. Roll the teflon tape on the thread of the shower seat.



2. Tighten the shower seat clockwise on the outlet hole of the outlet socket.



3. Connect the shower tube and shower seat, finally insert on the shower seat.