



PowerScribe® 360 Reporting

Integration Manual



The information presented in this manual represents what was provided to Nuance by the Vendor. Nuance does not perform qualifications on Integrations. It is up to the Client to confirm with the Vendor that their specific version of the vendor product is supported with their version of PowerScribe 360 Reporting.



Nuance employees are not authorized to adjust or configure the settings on a customer's PACS. The customer, or the customer's PACS representative, must make any necessary changes to the PACS configuration or settings.

PN 889802

Printed in U. S. A.

August 21, 2018

Trademarks

Nuance®, the Nuance logo, Dictaphone®, Dragon® NaturallySpeaking®, PowerScribe®, RadPort™, and RadWhere™ are trademarks or registered trademarks of Nuance Communications, Inc. or its affiliates in the United States and/or other countries. All other trademarks referenced herein are trademarks or registered trademarks of their respective owners.

Copyright Notice

This manual is copyrighted and all rights are reserved by Nuance Communications, Inc. No part of this publication may be reproduced, transmitted, transcribed, stored in a retrieval system, or translated into any language or computer language, in any form or by any means, electronic, mechanical, magnetic, optical, chemical, manual, or otherwise, without the prior written permission of Dictaphone Healthcare Solutions, Nuance Communications, Inc., 1 Wayside Rd., Burlington, MA 01803.

Copyright © 2018 Nuance Communications, Inc. All rights reserved.

Disclaimer

This document is provided "AS IS" WITHOUT WARRANTY OF ANY KIND, EITHER EXPRESSED OR IMPLIED, INCLUDING, BUT NOT LIMITED TO, THE IMPLIED WARRANTIES OF MERCHANTABILITY, FITNESS FOR A PARTICULAR PURPOSE, OR NON-INFRINGEMENT. Nuance shall not under any circumstances be liable to any person for any special, incidental, indirect or consequential damages, including, without limitation, damages resulting from use of OR RELIANCE ON the INFORMATION presented, loss of profits or revenues or costs of replacement goods, even if informed in advance of the possibility of such damages.

Every effort has been made to ensure the accuracy of the information presented. However, Nuance assumes no responsibility for the accuracy of the information. Product information is subject to change without notice. Changes, if any, will be incorporated in new editions of this publication. Nuance may make improvements and/or changes in the products and/or the programs described in this publication at any time without notice. Mention of non-Nuance products or services is for information purposes only and constitutes neither an endorsement nor a recommendation.

Table of Contents

Table of Contents	iv
XML Integration Settings	1-1
Multiple Sites / Integrations	1-1
Accession Number and MRN	1-1
Windows Login	1-2
Multiple Accession Numbers	1-2
Sites	1-2
Images	1-2
Afga Impax	2-1
ALLScripts	3-1
Aspyra	4-1
Avreo	5-1
Brit	6-1
Carestream Kodak	7-1
Cerner RadNet	8-1
Cerner Citrix Driver	8-2
Server Installation	8-2
Client Installation	8-2
Troubleshooting	8-4
Issues	8-4
Known Issues	8-6
Clario zVision	9-1
CPSI ImageLink	10-1
DR Systems Unity	11-1
Epic Hyperspace	12-1
Epic Radiant	13-1

Fuji Synapse v3.2.1 & v4.0	14-1
Fuji Synapse v4.0.4	15-1
Fuji Synapse v4.4	16-1
Fuji Synapse v5	17-1
GE Centricity Extends	18-1
Configure Centricity	18-2
GE Centricity IW	19-1
PowerScribe Driven Mode	19-2
GE Centricity PowerScribe XML	20-1
GE Centricity RIS-IC	21-1
Issue	21-3
Client receives a GE Centricity RIS-IC Timeout error on PACS workstation.....	21-3
GE RA1000 for Centricity PACS	22-1
Hologic SecurView	23-1
PowerScribe360 Client Preferences	23-2
Image Info Systems iQ-Voice	24-1
Infinitt G3	25-1
Intelerad InteleViewer	26-1
Intelerad Integration	26-3
Intuitive	27-1
Konica Minolta Exa PACS	28-1
Magview	29-1
McKesson Radiology (HRS)	30-1

Supported Workflows	30-2
Partner Driven Integration	30-2
PowerScribe Driven Integration	30-2
Additional Step	30-2
Additional Settings	30-3
Allowing McKesson HRS-A to Launch / Shut Down PowerScribe 360 Reporting	30-3
McKesson Engineering Responsibilities	30-3
Medical-Insight Easy-Viz	31-1
Medicalis Professional	32-1
MedInformatix PACS	33-1
Merge eFilm Fusion PACS	34-1
MIM Software	35-1
MRS	36-1
NovaRad	37-1
OnePACS	38-1
PenRad	39-1
Philips iSite / IntelliSpace	40-1
Client Setup	40-2
iSite / IntelliSpace User	40-3
Primordial Prism	41-1
RadNet eRAD RIS	42-1
RamSoft	43-1
ScImage	44-1
Sectra SectraCOM	45-1
Siemens Syngo	46-1

Siemens Syngo Via	47-1
TeraRecon	48-1
Manual Revision History	History-1

XML Integration Settings

All workstations where the client is installed, editor or dictator, the folder structure C:\Nuance\<PACS Name>\ must exist. This is the location where your PACS will communicate with PS360 at the client level.

Multiple Sites / Integrations

If the system has multiple sites and the integration type is PowerScribe Driven, duplicate the PowerScribe Driven mode integration under each site. If the integration type is Partner Driven, do not set up duplicate integrations under each site. Set up all Partner Driven integrations under the primary site (first site created). When a user logs in, no matter what site they are working under, the system will read the Partner Driven integrations created under the primary site and confirm the workstation is set up with the correct directory structures.

If there are multiple integrations on a system, and more than one uses file drop integration such as XML, you will need to ensure that each file drop integration drops files into, or reads files from, separate sub folders under c:\Nuance on the client workstation.

For example, an organization using both GE and Hologic might consider using the following paths:

- C:\Nuance\GE\
- C:\Nuance\Hologic\

Accession Number and MRN

(Versions 2.5.1 and higher)

Institutions that have multiple sites introduce the possibility of duplicate accession numbers. With PowerScribe 360 Reporting version 2.5.1 and higher, you can configure the system to open an order based on both accession number and MRN.

To configure the system to open an order based on both accession number and MRN:

1. Add the setting: FieldMRN=<field name> to the end of the Partner Driven text field.



Use the semicolon (;) delimiter between strings/arguments. The complete field in this example would be:

c:\nuance\study.xml;c:\nuance\status.xml;password=<password>;FieldMRN=<field name>

2. Replace <password> with the password needed to decrypt the XML file.

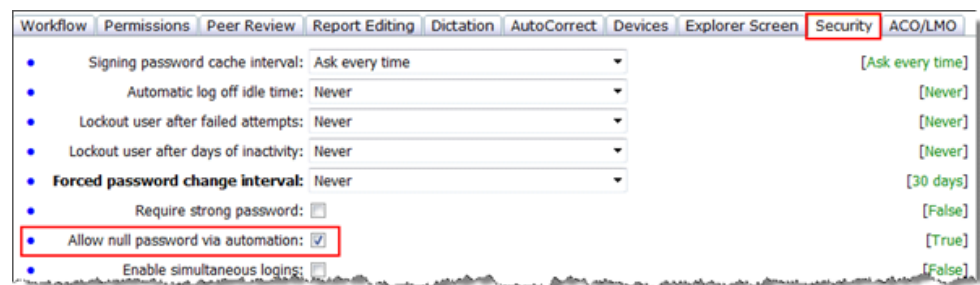
Once this value is set, when PACS sends the study xml file that contains the accession number and MRN for the fields defined in the Administrator Portal, PowerScribe 360 Reporting extracts both values and uses them to open a report

for the accession number/MRN pair.

FieldMRN - Identified the field name that the MRN is located in, in the XML file

Windows Login

UseWindowsLogin: If specified as true, a single sign-on occurs automatically. The PowerScribe 360 Reporting user name will be taken from the current Windows user's user name. PACS/RIS does not need to send any login information in the XML. PowerScribe 360 Reporting as doing this will result in a log on event occurring every time a request is sent by the PACS/RIS. For the feature to work properly, you configure the system preferences.



Multiple Accession Numbers

MultiAccSeperator= - Identifies the character separating accession numbers in the accession number field in XML File, if multiple accessions are supported.

Sites

Multisite= (options below)

All - Tells PS360 to search all sites in system for accession number(s)

This site - Tells PS360 to search the current site only for accession number(s)

Selected - Tells PS360 to search only the site selected in the drop down for accession number(s)

Images

Integration with PACs (Version 3.5 and above)

1. Verify with your Vendor if they support this function.
2. Create 2 additional sub-folders in C:\Nuance\<PACs Name> named:
 - image
 - status

3. Add the additional strings/arguments:

- Imagefolder= C:\Nuance\<PACs Name> \image
- Imagestatusfolder= C:\Nuance\<PACs Name> \status

Afga Impax

Type	Mode	String
PowerScribeXML	PowerScribe ¹	C:\Nuance\Agfa\status.xml
PowerScribeXML	Partner ²	C:\Nuance\Agfa\study.xml; C:\Nuance\Agfa\status.xml;password=<password>
¹ Indicates that the user works from a worklist in PowerScribe 360 Reporting. ² Indicates that the user is working from a worklist outside of PowerScribe 360 Reporting, such as the PACS application.		

To add the entries above, go to the Admin Portal **Setup > Sites > PACs**.

iRadWhere Port	9090
----------------	------

Interrupt Workflow	Yes
Send to Editor	Yes
Resident Workflow	Yes
Draft Workflow	Yes
Single Sign On	Yes

PowerScribe Driven Mode		Partner Driven Mode	
Launches PACS/RIS	No	PACS/RIS Launches PS360	Yes
Closes PACS/RIS	No	PACS/RIS Closes PS360	Yes
Auto-Open PACS images	Yes	Auto-open 360 Report when images open in PACS	Yes
Auto-Close PACS images when report is closed in 360	No	Auto-Close PACS images when report closed in 360	Yes
Mark Exam Dictated / Read	No	Mark Exam Dictated/Read	Yes
Allows Multiple Accession #s	Yes	Allows Multiple Accession #s	Yes

ALLScripts

Type	Mode	String
	PowerScribe ¹	
	Partner ²	
¹ Indicates that the user works from a worklist in PowerScribe 360 Reporting. ² Indicates that the user is working from a worklist outside of PowerScribe 360 Reporting, such as the PACS application.		

iRadWhere Port	9090
----------------	------

NS = Not Supported

Interrupt Workflow	NS
Send to Editor	NS
Resident Workflow	NS
Draft Workflow	NS
Single Sign On	NS

PowerScribe Driven		Partner Driven	
Launches PACS/RIS	NS	PACS/RIS Launches PS360	NS
Closes PACS/RIS	NS	PACS/RIS Closes PS360	NS
Auto-Open PACS images	NS	Auto-open 360 Report when images open in PACS	NS
Auto-Close PACS images when report is closed in 360	NS	Auto-Close PACS images when report closed in 360	NS
Mark Exam Dictated / Read	Yes	Mark Exam Dictated/Read	Yes
Allows Multiple Accession #s	NS	Allows Multiple Accession #s	NS

Aspyra

Type	Mode	String
	PowerScribe ¹	Not Supported (NS)
PowerScribeXML	Partner ²	C:\Nuance\Aspyra\study.xml;

¹ Indicates that the user works from a worklist in PowerScribe 360 Reporting.

² Indicates that the user is working from a worklist outside of PowerScribe 360 Reporting, such as the PACS application.

To add the entries above, go to the Admin Portal **Setup > Sites > PACs**.

iRadWhere Port	9090
----------------	------

Interrupt Workflow	NS
Send to Editor	NS
Resident Workflow	NS
Draft Workflow	NS
Single Sign On	NS

PowerScribe Driven Mode		Partner Driven Mode	
Launches PACS/RIS	NS	PACS/RIS Launches PS360	NS
Closes PACS/RIS	NS	PACS/RIS Closes PS360	NS
Auto-Open PACS images	NS	Auto-open 360 Report when images open in PACS	Yes
Auto-Close PACS images when report is closed in 360	NS	Auto-Close PACS images when report closed in 360	NS
Mark Exam Dictated / Read	NS	Mark Exam Dictated/Read	Yes
Allows Multiple Accession #s	NS	Allows Multiple Accession #s	NS

Avreo

Type	Mode	String
	PowerScribe ¹	Not Supported (NS)
PowerScribeXML	Partner ²	C:\Nuance\Avero\study.xml;

¹ Indicates that the user works from a worklist in PowerScribe 360 Reporting.

² Indicates that the user is working from a worklist outside of PowerScribe 360 Reporting, such as the PACS application.

To add the entries above, go to the Admin Portal **Setup > Sites > PACs**.

iRadWhere Port	9090
----------------	------

Interrupt Workflow	NS
Send to Editor	NS
Resident Workflow	NS
Draft Workflow	NS
Single Sign On	Yes

PowerScribe Driven Mode		Partner Driven Mode	
Launches PACS/RIS	NS	PACS/RIS Launches PS360	Yes
Closes PACS/RIS	NS	PACS/RIS Closes PS360	Yes
Auto-Open PACS images	NS	Auto-open 360 Report when images open in PACS	NS
Auto-Close PACS images when report is closed in 360	NS	Auto-Close PACS images when report closed in 360	NS
Mark Exam Dictated / Read	NS	Mark Exam Dictated/Read	Yes
Allows Multiple Accession #s	NS	Allows Multiple Accession #s	Yes

Type	Mode	String
	PowerScribe ¹	
	Partner ²	
¹ Indicates that the user works from a worklist in PowerScribe 360 Reporting. ² Indicates that the user is working from a worklist outside of PowerScribe 360 Reporting, such as the PACS application.		

NS = Not Supported

iRadWhere Port	9090
----------------	------

Interrupt Workflow	Yes
Send to Editor	NS
Resident Workflow	Yes
Draft Workflow	Yes
Single Sign On	Yes

PowerScribe Driven		Partner Driven	
Launches PACS/RIS	Yes	PACS/RIS Launches PS360	Yes
Closes PACS/RIS	Yes	PACS/RIS Closes PS360	Yes
Auto-Open PACS images	Yes	Auto-open 360 Report when images open in PACS	Yes
Auto-Close PACS images when report is closed in 360	Yes	Auto-Close PACS images when report closed in 360	Yes
Mark Exam Dictated / Read	Yes	Mark Exam Dictated/Read	Yes
Allows Multiple Accession #s	Yes	Allows Multiple Accession #s	Yes

Carestream Kodak

Type	Mode	String
	PowerScribe ¹	
	Partner ²	
¹ Indicates that the user works from a worklist in PowerScribe 360 Reporting. ² Indicates that the user is working from a worklist outside of PowerScribe 360 Reporting, such as the PACS application.		

iRadWhere Port	9090
----------------	------

Interrupt Workflow	Yes
Send to Editor	Yes
Resident Workflow	Yes
Draft Workflow	Yes
Single Sign On	Yes

PowerScribe Driven		Partner Driven	
Launches PACS/RIS	Yes	PACS/RIS Launches PS360	Yes
Closes PACS/RIS	Yes	PACS/RIS Closes PS360	Yes
Auto-Open PACS images	Yes	Auto-open 360 Report when images open in PACS	Yes
Auto-Close PACS images when report is closed in 360	Yes	Auto-Close PACS images when report closed in 360	Yes
Mark Exam Dictated / Read	Yes	Mark Exam Dictated/Read	Yes
Allows Multiple Accession #s	Yes	Allows Multiple Accession #s	Yes

Cerner RadNet

Type	Mode	String
	PowerScribe ¹	Not Supported (NS)
	Partner ²	
¹ Indicates that the user works from a worklist in PowerScribe 360 Reporting. ² Indicates that the user is working from a worklist outside of PowerScribe 360 Reporting, such as the PACS application.		

iRadWhere Port	9090
----------------	------

Interrupt Workflow	Yes
Send to Editor	Yes
Resident Workflow	Yes
Draft Workflow	Yes
Single Sign On	Yes

NS = Not Supported

PowerScribe Driven		Partner Driven	
Launches PACS/RIS	NS	PACS/RIS Launches PS360	Yes
Closes PACS/RIS	NS	PACS/RIS Closes PS360	Yes
Auto-Open PACS images	NS	Auto-open 360 Report when images open in PACS	Yes
Auto-Close PACS images when report is closed in 360	NS	Auto-Close PACS images when report closed in 360	Yes
Mark Exam Dictated / Read	NS	Mark Exam Dictated/Read	Yes
Allows Multiple Accession #s	NS	Allows Multiple Accession #s	Yes

Cerner Citrix Driver

Server Installation

1. Make sure the Citrix Server software has been setup according to Citrix installation manual.
 2. Be sure that all Citrix users are not logged into the PowerScribe client via Cerner RadNet.
 3. Before running the CernerCOMVirtualChannelServer.exe server side installer, uninstall the previous version of CernerCOM Virtual Channel Server Driver using Add/Remove Program from the Control Panel.
 4. On the Citrix Server machine, run the CernerCOMVirtualChannelServer.exe until it is installed.
 5. Start the client-side installation on the client machine.
-

Client Installation

1. Before installing the PowerScribe CernerCOM citrix driver on the client machine, the client machine should already have PowerScribe 360 or 5.x client application installed. If not, start installing PowerScribe 360 or 5.x client application first.
2. Verify that the Citrix Client software is installed on the client machine according to the Citrix installation manual.
3. Before running the CernerCOMVirtualChannelClient.exe client side installer, make sure to uninstall the previous version of CernerCOM Virtual Channel Client Driver using Add/Remove Program from the Control Panel.
4. Install the CernerCOMVirtualChannelClient.exe as “Run As Administrator” option.
5. Log into the Citrix Client and use your PACS application with PowerScribe client.



For the PowerScribe 360 client, you need to enable the “Allow null password via automation” option in Portal on System Preference.

System: Test HS 1 [Reset to Defaults](#) | [Save and Close](#) | [Close](#)

Workflow | Permissions | Order Entry | Peer Review | Report Editing | Dictation | AutoCorrect | Devices | Explorer Screen | **Security** | ACO/LMO

- **Signing password cache interval:** Never ask [Ask]
- Automatic log off idle time: Never
- Lockout user after failed attempts: Never
- Lockout user after days of inactivity: Never
- **Forced password change interval:** Never
- Require strong password: ☐
- **Allow null password via automation:** ☒
- **Enable simultaneous logins:** ☒
- Enable application logging: Disabled
- Warn on logoff: Never
- Block display of demographics: ☐
- Physician access mode: Enabled with administered registration [Enabled with administe]

6. Added a new Registry entry “ReportClosedEventChoice” string in the “HKEY_LOCAL_MACHINE\SOFTWARE\Citrix\ICA Client\Engine\Configuration\Advanced\Modules\CernCOM”

This allows Cerner RDT to dictate which ReportClosed event they want for the 360 Client integration.

- ♦ ReportClosedEventChoice (REG_SZ) 0 - indicate both ReportClosed and ReportClosed2 events will be sent.
- ♦ ReportClosedEventChoice (REG_SZ) 1 – indicate only ReportClosed event will be sent.
- ♦ ReportClosedEventChoice (REG_SZ) 2 – indicate only ReportClosed2 event will be sent.



By default, if there is no “ReportClosedEventChoice” entry in the registry, then only the ReportClosed event will be sent.

Troubleshooting

Issues

Cerner RadNet Failed to Launch PowerScribe

1. Make sure the correct version of the server and client side CernerCOM Virtual Channel Driver Plug-in is installed. On the server machine, you should have Nuance.CernerCOM.dll created in “C:\Program Files\Dictaphone\CitrixVirtualDriver” directory and this dll should be register as a regular COM object on your system. On the client machine, you should have vdCernerCOM.dll created in “C:\Program Files\Citrix\ICA Client” directory and this is a regular dll need used by Citrix Virtual Channel.
2. If everything is installed correctly, try to run Cerner RadNet and start PowerScribe. If PowerScribe start, there should be a log file created both on the client and server machine. On the client side the log file is located at “C:\ProgramData\Nuance\PowerScribe\Logs” the same place as the PowerScribe client log, also this log file can also be upload using the PowerScribe client Upload log option from the UI. On the server the log file is located at “C:\Temp\Nuance\PowerScribe\Logs”. The log files by default will be purged after 7 days from the day of the logging.
3. To do further diagnosis when PowerScribe does not work properly with Cerner RadNet via Citrix, get all the client logs with <date>_vdCernerCOM.log and the server logs with <date>_ctxCernerCOM.log and also PowerScribe client logs for development to analyze.



In the case of Cerner RadNet exit out (or forced quit) unexpectedly on Citrix server; user need to exit PowerScribe client on the client machine and from the Windows Task Manager make sure the “Nuance.PowerScribe360.exe” process is not running for PS360 client and “PowerScribeApi.exe” process is not running for PS5.x client and then you can re-start Cerner RadNet again.

Unable to Connect to Remote Server

User receives error that the system is unable to connect to remote server, and the logs in Web portal show the following error:

A connection attempt failed because the connection party did not properly respond after a period of time, or establish connection failed because connected host has failed to respond 142.239.212.194:80.

Error in Logs:

```
[2012-09-25 14:21:00,475] [BackgroundExecutor] [ERROR] [Invoke]
[PowerscribeHessianServer] [EXCEPTION in
PowerscribeHessianServer.GetClientReportCounts(Nuance.Powerscribe.Client.Serv
erApi.Interfaces.ClientReportsInResidentQueue[])]
```

System.Net.WebException: Unable to connect to the remote server --->

System.Net.Sockets.SocketException: A connection attempt failed because the connected party did not properly respond after a period of time, or established connection failed because connected host has failed to respond 142.239.212.194:80

Check the followings for diagnosis:

The registry key Value should be 2 (Default Value).

If it is not 2 (Default Value), set the value to 2.

```
[HKEY_LOCAL_MACHINE\SYSTEM\CurrentControlSet\Services\Tcpip\Paramete
rs]
```

```
"TcpMaxConnectRetransmissions"
```

Cerner RadNet Failed to Launch PowerScribe

Check the followings for diagnosis:

1. Make sure the correct version of the server and client side CernerCOM Virtual Channel Driver Plug-in is installed.

On the server, verify that the Nuance.CernerCOM.dll exists in
“C:\Program Files\Dictaphone\CitrixVirtualDriver” directory.

This dll should be registered as a regular COM object on the server.

On the client, verify that vdCernerCOM.dll exists in
“C:\Program Files\Citrix\ICA Client” directory.

The Citrix Virtual Channel uses this dll.

2. If everything is installed correctly, try to run Cerner RadNet, and start PowerScribe. If PowerScribe starts, a log file is created on both the client and server.

On the client, verify that the log file exists in:
“C:\ProgramData\Nuance\PowerScribe\Logs”

This is the same location as the PowerScribe client log. This log file can also be uploaded using the PowerScribe client Upload log option from the UI.

On the server, verify that the log file exists in:
“C:\Temp\Nuance\PowerScribe\Logs”.

The log files by default will be purged after 7 days from the day of the logging.

3. For further diagnosis when PowerScribe does not work properly with Cerner RadNet via Citrix, get or send? all the client logs with <date>_vdCernerCOM.log , the server logs with <date>_ctxCernerCOM.log, and PowerScribe client logs for or to development to analyze.
-

Known Issues

If Cerner RadNet exits out (forced quit) unexpectedly on Citrix server, users need to exit the PowerScribe client from the Windows Task Manager. Make sure the “Nuance.PowerScribe360.exe” process is not running for PS360 client and “PowerScribeApi.exe” process is not running for PS5.x client, and then restart Cerner RadNet.

Clario zVision

Type	Mode	String
	PowerScribe ¹	
	Partner ²	
¹ Indicates that the user works from a worklist in PowerScribe 360 Reporting. ² Indicates that the user is working from a worklist outside of PowerScribe 360 Reporting, such as the PACS application.		

iRadWhere Port	9090
----------------	------

NS = Not Supported

Interrupt Workflow	Yes
Send to Editor	NS
Resident Workflow	Yes
Draft Workflow	Yes
Single Sign On	Yes

PowerScribe Driven		Partner Driven	
Launches PACS/RIS	Yes	PACS/RIS Launches PS360	Yes
Closes PACS/RIS	Yes	PACS/RIS Closes PS360	Yes
Auto-Open PACS images	Yes	Auto-open 360 Report when images open in PACS	Yes
Auto-Close PACS images when report is closed in 360	Yes	Auto-Close PACS images when report closed in 360	Yes
Mark Exam Dictated / Read	Yes	Mark Exam Dictated/Read	Yes
Allows Multiple Accession #s	Yes	Allows Multiple Accession #s	Yes

CPSI ImageLink

Type	Mode	String
	PowerScribe ¹	
	Partner ²	
¹ Indicates that the user works from a worklist in PowerScribe 360 Reporting. ² Indicates that the user is working from a worklist outside of PowerScribe 360 Reporting, such as the PACS application.		

iRadWhere Port	9090
----------------	------

NS = Not Supported

Interrupt Workflow	Yes
Send to Editor	NS
Resident Workflow	Yes
Draft Workflow	Yes
Single Sign On	Yes

PowerScribe Driven		Partner Driven	
Launches PACS/RIS	Yes	PACS/RIS Launches PS360	Yes
Closes PACS/RIS	Yes	PACS/RIS Closes PS360	Yes
Auto-Open PACS images	Yes	Auto-open 360 Report when images open in PACS	Yes
Auto-Close PACS images when report is closed in 360	Yes	Auto-Close PACS images when report closed in 360	Yes
Mark Exam Dictated / Read	Yes	Mark Exam Dictated/Read	Yes
Allows Multiple Accession #s	Yes	Allows Multiple Accession #s	Yes

DR Systems Unity

Type	Mode	String
	PowerScribe ¹	
	Partner ²	
¹ Indicates that the user works from a worklist in PowerScribe 360 Reporting. ² Indicates that the user is working from a worklist outside of PowerScribe 360 Reporting, such as the PACS application.		

iRadWhere Port	9090
----------------	------

Interrupt Workflow	Yes
Send to Editor	Yes
Resident Workflow	Yes
Draft Workflow	Yes
Single Sign On	Yes

PowerScribe Driven		Partner Driven	
Launches PACS/RIS	Yes	PACS/RIS Launches PS360	Yes
Closes PACS/RIS	Yes	PACS/RIS Closes PS360	Yes
Auto-Open PACS images	Yes	Auto-open 360 Report when images open in PACS	Yes
Auto-Close PACS images when report is closed in 360	Yes	Auto-Close PACS images when report closed in 360	Yes
Mark Exam Dictated / Read	Yes	Mark Exam Dictated/Read	Yes
Allows Multiple Accession #s	Yes	Allows Multiple Accession #s	Yes

Epic Hyperspace

Type	Mode	String
	PowerScribe ¹	Not Supported (NS)
PowerScribeXML	Partner ²	C:\Nuance\Epic\study.xml; C:\Nuance\Epic\status.xml;MultiAccSeparator=\;Multisite=all
¹ Indicates that the user works from a worklist in PowerScribe 360 Reporting. ² Indicates that the user is working from a worklist outside of PowerScribe 360 Reporting, such as the PACS application.		

To add the entries above, go to the Admin Portal **Setup > Sites > PACs**.

The screenshot shows the 'PACS' configuration page in the Epic Hyperspace Admin Portal. The top navigation bar includes 'Setup', 'Accounts', 'AutoText', 'Bridge', 'Procedures', 'Sites', 'Speech', and 'System'. The 'Sites' section is active, and the 'PACS' tab is selected. The page displays a form for adding or editing a PACS entry, with fields for 'Name', 'Description', 'Facility Code', 'Username', and 'Password'. Below the form is a table with columns 'Type', 'Name', 'Description', and 'Mode'. The 'Desert' site is selected in the dropdown menu.

Interrupt Workflow	Yes
Send to Editor	Yes
Resident Workflow	Yes
Draft Workflow	Yes
Single Sign On	NS

PowerScribe Driven Mode		Partner Driven Mode	
Launches PACS/RIS	NS	PACS/RIS Launches PS360	Yes
Closes PACS/RIS	NS	PACS/RIS Closes PS360	Yes
Auto-Open PACS images	NS	Auto-open 360 Report when images open in PACS	Yes
Auto-Close PACS images when report is closed in 360	NS	Auto-Close PACS images when report closed in 360	Yes
Mark Exam Dictated / Read	NS	Mark Exam Dictated/Read	Yes
Allows Multiple Accession #s	NS	Allows Multiple Accession #s	Yes

Epic Radiant

Type	Mode	String
	PowerScribe ¹	Not Supported (NS)
	Partner ²	
¹ Indicates that the user works from a worklist in PowerScribe 360 Reporting. ² Indicates that the user is working from a worklist outside of PowerScribe 360 Reporting, such as the PACS application.		

iRadWhere Port	9090
----------------	------

Interrupt Workflow	Yes
Send to Editor	Yes
Resident Workflow	Yes
Draft Workflow	Yes
Single Sign On	Yes

PowerScribe Driven		Partner Driven	
Launches PACS/RIS	NS	PACS/RIS Launches PS360	Yes
Closes PACS/RIS	NS	PACS/RIS Closes PS360	Yes
Auto-Open PACS images	NS	Auto-open 360 Report when images open in PACS	Yes
Auto-Close PACS images when report is closed in 360	NS	Auto-Close PACS images when report closed in 360	Yes
Mark Exam Dictated / Read	NS	Mark Exam Dictated/Read	Yes
Allows Multiple Accession #s	NS	Allows Multiple Accession #s	Yes

Fuji Synapse v3.2.1 & v4.0

Type	Mode	String
PowerScribeXML or RadWhereURL/XML	PowerScribe ¹	C:\Nuance\Fuji\Status.xml http://PACS1/images?accession={accession}
PowerScribeXML	Partner ²	C:\Nuance\Fuji\order.xml;c:\Nuance\Fuji\status.xml
¹ Indicates that the user works from a worklist in PowerScribe 360 Reporting. ² Indicates that the user is working from a worklist outside of PowerScribe 360 Reporting, such as the PACS application.		

To add the entries above, go to the Admin Portal **Setup > Sites > PACs**.

iRadWhere Port	9090
----------------	------

Interrupt Workflow	Yes
Send to Editor	Yes
Resident Workflow	Yes
Draft Workflow	Yes
Single Sign On	Yes

NS = Not Supported

PowerScribe Driven Mode		Partner Driven Mode	
Launches PACS/RIS	NS	PACS/RIS Launches PS360	NS
Closes PACS/RIS	NS	PACS/RIS Closes PS360	NS
Auto-Open PACS images	Yes	Auto-open 360 Report when images open in PACS	Yes
Auto-Close PACS images when report is closed in 360	Yes	Auto-Close PACS images when report closed in 360	Yes
Mark Exam Dictated / Read	Yes	Mark Exam Dictated/Read	Yes
Allows Multiple Accession #s	Yes	Allows Multiple Accession #s	Yes

Fuji Synapse v4.0.4

Type	Mode	String
	PowerScribe ¹	
	Partner ²	
¹ Indicates that the user works from a worklist in PowerScribe 360 Reporting. ² Indicates that the user is working from a worklist outside of PowerScribe 360 Reporting, such as the PACS application.		

iRadWhere Port	9090
----------------	------

Interrupt Workflow	Yes
Send to Editor	Yes
Resident Workflow	Yes
Draft Workflow	Yes
Single Sign On	Yes

PowerScribe Driven		Partner Driven	
Launches PACS/RIS	Yes	PACS/RIS Launches PS360	Yes
Closes PACS/RIS	Yes	PACS/RIS Closes PS360	Yes
Auto-Open PACS images	Yes	Auto-open 360 Report when images open in PACS	Yes
Auto-Close PACS images when report is closed in 360	Yes	Auto-Close PACS images when report closed in 360	Yes
Mark Exam Dictated / Read	Yes	Mark Exam Dictated/Read	Yes
Allows Multiple Accession #s	Yes	Allows Multiple Accession #s	Yes

Fuji Synapse v4.4

Type	Mode	String
RadWhereURL/XML	PowerScribe ¹	**Sample String** Complete string will be provided by Fuji. http://fujiServerName/explore.asp?path=/All%20Studies/AccessionNumber={accession})
	Partner ²	

¹ Indicates that the user works from a worklist in PowerScribe 360 Reporting.

² Indicates that the user is working from a worklist outside of PowerScribe 360 Reporting, such as the PACS application.

To add the entries above, go to the Admin Portal **Setup > Sites > PACs**.

iRadWhere Port	9090
----------------	------

Interrupt Workflow	Yes
Send to Editor	Yes
Resident Workflow	Yes
Draft Workflow	Yes
Single Sign On	Yes

PowerScribe Driven		Partner Driven	
Launches PACS/RIS	Yes	PACS/RIS Launches PS360	Yes
Closes PACS/RIS	Yes	PACS/RIS Closes PS360	Yes
Auto-Open PACS images	Yes	Auto-open 360 Report when images open in PACS	Yes
Auto-Close PACS images when report is closed in 360	Yes	Auto-Close PACS images when report closed in 360	Yes
Mark Exam Dictated / Read	Yes	Mark Exam Dictated/Read	Yes
Allows Multiple Accession #s	Yes	Allows Multiple Accession #s	Yes

Fuji Synapse v5

Type	Mode	String
	PowerScribe ¹	
	Partner ²	
¹ Indicates that the user works from a worklist in PowerScribe 360 Reporting. ² Indicates that the user is working from a worklist outside of PowerScribe 360 Reporting, such as the PACS application.		

iRadWhere Port	9090
----------------	------

Interrupt Workflow	Yes
Send to Editor	Yes
Resident Workflow	Yes
Draft Workflow	Yes
Single Sign On	Yes

PowerScribe Driven		Partner Driven	
Launches PACS/RIS	Yes	PACS/RIS Launches PS360	Yes
Closes PACS/RIS	Yes	PACS/RIS Closes PS360	Yes
Auto-Open PACS images	Yes	Auto-open 360 Report when images open in PACS	Yes
Auto-Close PACS images when report is closed in 360	Yes	Auto-Close PACS images when report closed in 360	Yes
Mark Exam Dictated / Read	Yes	Mark Exam Dictated/Read	Yes
Allows Multiple Accession #s	Yes	Allows Multiple Accession #s	Yes

GE Centricity Extends

Type	Mode	String
PowerScribeXML	PowerScribe ¹	Not Supported (NS)
PowerScribeXML	Partner ²	C:\Nuance\GE\order.xml;

¹ Indicates that the user works from a worklist in PowerScribe 360 Reporting.

² Indicates that the user is working from a worklist outside of PowerScribe 360 Reporting, such as the PACS application.

To add the entries above, go to the Admin Portal **Setup > Sites > PACs**.

iRadWhere Port	9090
----------------	------

Interrupt Workflow	Yes
Send to Editor	Yes
Resident Workflow	Yes
Draft Workflow	Yes
Single Sign On	Yes

PowerScribe Driven Mode		Partner Driven Mode	
Launches PACS/RIS	NS	PACS/RIS Launches PS360	Yes
Closes PACS/RIS	NS	PACS/RIS Closes PS360	Yes
Auto-Open PACS images	NS	Auto-open 360 Report when images open in PACS	Yes
Auto-Close PACS images when report is closed in 360	NS	Auto-Close PACS images when report closed in 360	Yes
Mark Exam Dictated / Read	NS	Mark Exam Dictated/Read	Yes
Allows Multiple Accession #s	NS	Allows Multiple Accession #s	Yes

Configure Centricity



The PACS Administrator or GE representative needs to perform the following steps to set up the Centricity integration. Nuance Support should not make these changes. This integration works by setting up new user interface (UI) controls (or buttons) in Centricity. These buttons are configured to execute a PowerScribe 360 Reporting command line program (RWCommand.exe), which in turn creates an XML file that is input to PowerScribe 360 Reporting.

1. Obtain the GE Generic Extend API Specification document. This document applies to Centricity Versions 1.0-3.0.



This step must be performed by a Site Administrator or GE Support Personnel. It requires Administrative access to the GE Workstation and its configuration files.

2. Referring to Section 8 of the GE Generic Extend API Specification document, install the new buttons in Centricity. The buttons can be installed in any or all of the following three locations:
 - ♦ Extend drop-down menu on Work Modes palette
 - ♦ Exam functions drop-down menu in viewing
 - ♦ Image functions drop-down menu in viewing

In each case, set the label to Nuance and the button label to Start Nuance. The text can be anything you choose (for example, PowerScribe360, Start PowerScribe360), but the button label is the one that actually launches PowerScribe 360 Reporting.

3. Create a folder that will be used to drop an XML file to PowerScribe 360 Reporting (for example, d:\Nuance).
4. Configure the button command property so that it executes RWCommand.exe:
...work list.component1.command=c:\Program Files\Nuance\Nuance RWCommand\rwcommand.exe -f D:\Nuance\order.xml -a <ACCN0>
5. **Optional:** If you would like to configure a single sign-on, specify the -u and -p (user name and password) items as well.

GE Centricity IW

Type	Mode	String
RadWhere URL/XML	PowerScribe ¹	https://192.168.13.198/loadStudy.jsp?user_name={username}&password={password}&rsa=true&accession_number={accession} &nat_access=true
Dynamic Imaging	Partner ²	111

¹ Indicates that the user works from a worklist in PowerScribe 360 Reporting.

² Indicates that the user is working from a worklist outside of PowerScribe 360 Reporting, such as the PACS application.

To add the entries above, go to the Admin Portal **Setup > Sites > PACs**.

iRadWhere Port	9090
----------------	------

Interrupt Workflow	Yes
Send to Editor	Yes
Resident Workflow	Yes
Draft Workflow	Yes
Single Sign On	Yes

PowerScribe Driven		Partner Driven	
Launches PACS/RIS	Yes	PACS/RIS Launches PS360	Yes
Closes PACS/RIS	Yes	PACS/RIS Closes PS360	Yes
Auto-Open PACS images	Yes	Auto-open 360 Report when images open in PACS	Yes
Auto-Close PACS images when report is closed in 360	Yes	Auto-Close PACS images when report closed in 360	Yes
Mark Exam Dictated / Read	Yes	Mark Exam Dictated/Read	Yes
Allows Multiple Accession #s	Yes	Allows Multiple Accession #s	Yes

PowerScribe Driven Mode

For this example, `user_name={username}&password={password}` is the PowerScribe 360 Reporting client login and it must match the GE Centricity login. The `accession_number={accession}` is the accession number selected by user once fully logged into PowerScribe 360 Reporting client.

Partner Driven Integration: The usual port specified in the Portal for IRadWhere is 9090. Therefore, you should not use that port for Dynamic Imaging or there will be a conflict. Ask the proper customer personnel to supply the number of a free port that you can use for the entry.

The PACS administrator or GE Representative must perform the steps in this section. In order to send over a required suffix (termination) at the end of the accession number, you must load an additional file on each workstation that uses the GE/PowerScribe Dictate function in the Partner Driven Mode.

1. Open a text editor application, such as Notepad, and create the following file.
2. In the Port= line, use the port number that you specified above for the Partner Driven mode entry, which in the example was 111.
3. Save the file using the name Dictation.ini.
4. On each workstation that has the GE viewer loaded, go to C:\Program Files\Integrad.3\MIV.
5. Copy the Dictation.ini file into the C:\Program Files\Integrad.3\MIV directory.
6. Open the desired study in GE PACS-IW.
7. Click the Dictate button.

```
Dictation.ini - Notepad
File Edit Format View Help

[[General]
; Dictation Configuration File for Insite communication
; If not enabled, the server side integration will be used
Enabled=Y

[Connection]
; Connection type - may be COM or IP
Type=IP
; IP address or COM port name (COM1, COM2, etc.)
Address=127.0.0.1
; Port number - for IP connection only
Port=111
; Connection parameters - init string for COM
Params=

[FIELD_USER]
SPECIAL=user_name

[FIELD_MRN]
STUDY_SECTION=PATIENT_DATA
STUDY_KEY=Patient ID

[FIELD_ACC]
STUDY_SECTION=STUDY_DATA
STUDY_KEY=Accession Number
OP1=SUFFIX("\0x0D")
OP2=SUFFIX("\0x0A")

[Dictation Data]
; This section defines the string that is to be passed to the dictation system
; The string can include fields defined above. The fields are enclosed in curly braces.
String={ACC}
```

GE Centricity PowerScribe XML

Type	Mode	String
PowerScribeXML	PowerScribe ¹	C:\Nuance\GE\Status.xml
PowerScribeXML	Partner ²	C:\Nuance\GE\study.xml;C:\Nuance\GE\status.xml;UseWindowsLogin=True

¹ Indicates that the user works from a worklist in PowerScribe 360 Reporting.

² Indicates that the user is working from a worklist outside of PowerScribe 360 Reporting, such as the PACS application.

To add the entries above, go to the Admin Portal **Setup > Sites > PACs**.

iRadWhere Port	9090
----------------	------

Interrupt Workflow	Yes
Send to Editor	Yes
Resident Workflow	Yes
Draft Workflow	Yes
Single Sign On	Yes

PowerScribe Driven Mode		Partner Driven Mode	
Launches PACS/RIS	Yes	PACS/RIS Launches PS360	Yes
Closes PACS/RIS	Yes	PACS/RIS Closes PS360	Yes
Auto-Open PACS images	Yes	Auto-open 360 Report when images open in PACS	Yes
Auto-Close PACS images when report is closed in 360	Yes	Auto-Close PACS images when report closed in 360	Yes
Mark Exam Dictated / Read	Yes	Mark Exam Dictated/Read	Yes
Allows Multiple Accession #s	Yes	Allows Multiple Accession #s	Yes

GE Centricity RIS-IC

Type	Mode	String
	PowerScribe ¹	
	Partner ²	

¹ Indicates that the user works from a worklist in PowerScribe 360 Reporting.

² Indicates that the user is working from a worklist outside of PowerScribe 360 Reporting, such as the PACS application.

iRadWhere Port	9090
----------------	------



If you are using IDI Mamo workstation or the Universal Viewer integration, you may have to use port 9091, as there may be a possible port conflict with the applications.

Interrupt Workflow	Yes
Send to Editor	Yes
Resident Workflow	Yes
Draft Workflow	Yes
Single Sign On	Yes

PowerScribe Driven		Partner Driven	
Launches PACS/RIS	Yes	PACS/RIS Launches PS360	Yes
Closes PACS/RIS	Yes	PACS/RIS Closes PS360	Yes
Auto-Open PACS images	Yes	Auto-open 360 Report when images open in PACS	Yes
Auto-Close PACS images when report is closed in 360	Yes	Auto-Close PACS images when report closed in 360	Yes
Mark Exam Dictated / Read	Yes	Mark Exam Dictated/Read	Yes
Allows Multiple Accession #s	Yes	Allows Multiple Accession #s	Yes



In GE Centricity RIS-IC, when the user goes to a different study in GE while a report is open in PowerScribe 360 Reporting, the user is asked if they would like to save (CMD_SAVE) or discard (CMD_CANCEL) the report.

Issue

Client receives a GE Centricity RIS-IC Timeout error on PACS workstation.

This timeout error occurs if the integration fails to make the API call within the specified timeout period after a new dictation launches. If this occurs RIS-IC, resets its internal dictation session data, which allows for a new dictation launch. In order for RIS-IC and PowerScribe 360 to stay in sync, the dictation should be terminated in the PowerScribe 360 UI as well.



Solution

If users are receiving a timeout error message, they will need to check if their version of GE Centricity RIS-IC has the timer setting Preference (only available in 10.8 update 6 and higher).

The release of 10.8 UP 6 addressed this issue by allowing the customer or GE engineer to configure/increase the Dictation System Context Change Timeout period, which was previously hardcoded as 5 seconds in RIS-IC pre 10.8 UP6. The default setting for 10.8 Upgrade 6 or higher is defined as 30 seconds.

This error can be addressed by the following:

Adjust Timeout Period

Adjusting the timeout period in RIS-IC to a reasonable amount of seconds.

Set this preference (in GE) to 45 min. or higher, can prevent the error message.

If running GE Centricity RIS-IC lower than 10.8 Upgrade 6, the preference timer will not exist. The client would need to upgrade to address the issue.

Select Radiologist/Select Attending

Users selecting the Radiologist via the PS360 Select Attending window, before the timeout period expires. This occurs in cases where a resident or a fellow choose to work like a resident. If the timeout period expires, an error will occur.

AutoText

Ensuring that PS360 categorization related to users' AutoText in PS360 do not take a significant amount of time to load into memory before the timeout period expires. If the timeout period expires, an error will occur.

Addendum

When creating an addendum in PS360, ensure users select **Yes** or **No** before the timeout period expires for the *“This report is finalized. Do you want to create an addendum?”* message. If the timeout period expires, an error will occur.

GE RA1000 for Centricity PACS

Type	Mode	String
	PowerScribe ¹	
ImageCast GE	Partner ²	SAVEONCANCEL=True

¹ Indicates that the user works from a worklist in PowerScribe 360 Reporting.

² Indicates that the user is working from a worklist outside of PowerScribe 360 Reporting, such as the PACS application.

To add the entries above, go to the Admin Portal **Setup > Sites > PACs**.

PACS:

Type	Name	Description	Mode
ImageCast GE	ImageCast GE		<input type="radio"/> PowerScribe driven <input checked="" type="radio"/> Partner driven
			SAVEONCANCEL=True

Page

iRadWhere Port	9090
----------------	------



If you are using IDI Mamo workstation or the Universal Viewer integration, you may have to use port 9091, as there may be a possible port conflict with the applications.

Interrupt Workflow	Yes
Send to Editor	Yes
Resident Workflow	Yes
Draft Workflow	Yes
Single Sign On	Yes

PowerScribe Driven		Partner Driven	
Launches PACS/RIS	Yes	PACS/RIS Launches PS360	Yes
Closes PACS/RIS	Yes	PACS/RIS Closes PS360	Yes
Auto-Open PACS images	Yes	Auto-open 360 Report when images open in PACS	Yes
Auto-Close PACS images when report is closed in 360	Yes	Auto-Close PACS images when report closed in 360	Yes
Mark Exam Dictated / Read	Yes	Mark Exam Dictated/Read	Yes
Allows Multiple Accession #s	Yes	Allows Multiple Accession #s	Yes



In the GE IDR integration, when the user goes to a different study in GE while a report is open in PowerScribe 360 Reporting, GE sends an event to PowerScribe 360 Reporting called CompleteDictation. This event sends PowerScribe 360 Reporting either a CMD_CANCEL or CMD_SAVE command.

The PACS administrator or GE representative must perform the following steps.

1. Install RA1000 and select IDR Extend for the integration.
2. When prompted for the location of PowerScribe 360 Reporting server, enter the value below. This can be changed at a later time, if needed, in the **extend.properties** file.

http://<servername>/PS360ReportingClient/Client/Nuance.PowerScribe360.application

3. To test proper function, log into RA1000 with the username and password used to log into PowerScribe 360 Reporting. After launching RA1000, the PowerScribe 360 Reporting Client will also launch and log in automatically. This and other settings can be changed in RA1000 under **Utilities/Reporting Integration Preferences**.
4. To open an exam in RA1000 and PowerScribe 360 Reporting, highlight an exam in the RA1000 worklist and choose the appropriate option from the IDR drop-down located just below the worklist. You can also see these options in the Exam Functions menu. By default, the IDR API will provide PowerScribe 360 Reporting with the MRN and Accession Number (ris_exam_id) to launch the appropriate exam (in PowerScribe 360 Reporting).

For customers who use the **order_nbr** as their accession number, use the following platinum property in **platinum_custom.properties**:

com.ge.med.platinum.gui.work.Exam.useOrderNumberInsteadOfRISExamID=false

The integration is now complete and can be handed off to the customer for testing.

Hologic SecurView

Type	Mode	String
PowerScribeXML	PowerScribe ¹	C:\Nuance\Hologic\status.xml
PowerScribeXML	Partner ²	C:\Nuance\Hologic\study.xml;C:\Nuance\Hologic\status.xml;password=holx;base64=false;multisite=all

¹ Indicates that the user works from a worklist in PowerScribe 360 Reporting.

² Indicates that the user is working from a worklist outside of PowerScribe 360 Reporting, such as the PACS application.

To add the entries above, go to the Admin Portal **Setup > Sites > PACs**.

iRadWhere Port	9090
----------------	------

Interrupt Workflow	Yes
Send to Editor	Yes
Resident Workflow	Yes
Draft Workflow	Yes
Single Sign On	Yes

NS = Not Supported

PowerScribe Driven Mode		Partner Driven Mode	
Launches PACS/RIS	Yes	PACS/RIS Launches PS360	Yes
Closes PACS/RIS	NS	PACS/RIS Closes PS360	NS
Auto-Open PACS images	Yes	Auto-open 360 Report when images open in PACS	Yes
Auto-Close PACS images when report is closed in 360	v10.0	Auto-Close PACS images when report closed in 360	v10.0
Mark Exam Dictated / Read	v10.0	Mark Exam Dictated/Read	v10.0
Allows Multiple Accession #s	Yes	Allows Multiple Accession #s	Yes

PowerScribe360 Client Preferences

In the Client, the Dictator will need to enable the “Automatically load PACS studies for the following:

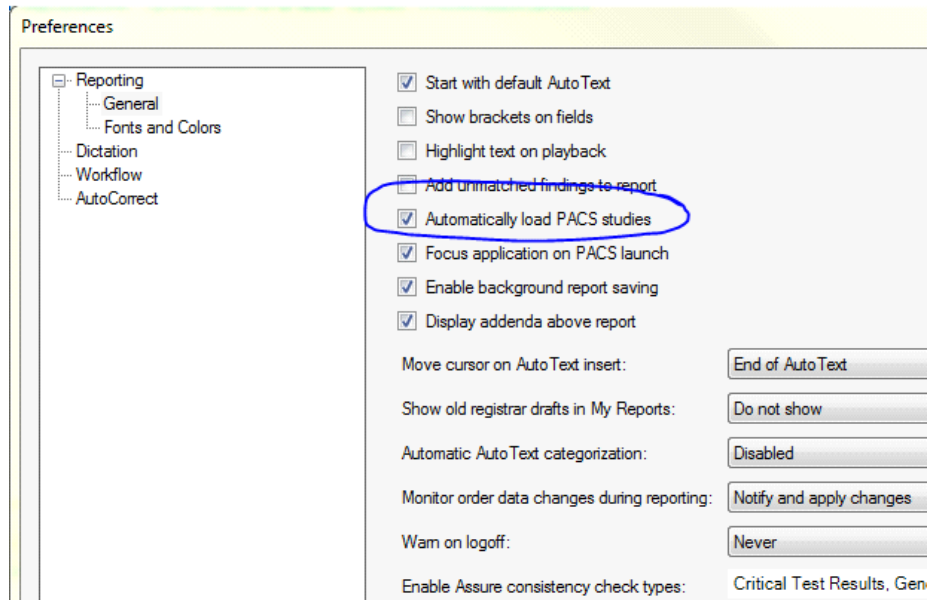


Image Info Systems iQ-Voice

Type	Mode	String
	PowerScribe ¹	
	Partner ²	
¹ Indicates that the user works from a worklist in PowerScribe 360 Reporting. ² Indicates that the user is working from a worklist outside of PowerScribe 360 Reporting, such as the PACS application.		

iRadWhere Port	9090
----------------	------

Interrupt Workflow	Yes
Send to Editor	Yes
Resident Workflow	Yes
Draft Workflow	Yes
Single Sign On	Yes

PowerScribe Driven		Partner Driven	
Launches PACS/RIS	Yes	PACS/RIS Launches PS360	Yes
Closes PACS/RIS	Yes	PACS/RIS Closes PS360	Yes
Auto-Open PACS images	Yes	Auto-open 360 Report when images open in PACS	Yes
Auto-Close PACS images when report is closed in 360	Yes	Auto-Close PACS images when report closed in 360	Yes
Mark Exam Dictated / Read	Yes	Mark Exam Dictated/Read	Yes
Allows Multiple Accession #s	Yes	Allows Multiple Accession #s	Yes

Infinitt G3

Type	Mode	String
Infinitt Master	PowerScribe ¹	http://g3iis/pkg_pacs/ external_interface.aspx?TYPE=V&LID={username}&LP W={password}&AN={accession}
PowerScribeXML	Partner ²	C:\Nuance\G3\study.xml;C:\Nuance\G3\response.xml ;password=1234
¹ Indicates that the user works from a worklist in PowerScribe 360 Reporting. ² Indicates that the user is working from a worklist outside of PowerScribe 360 Reporting, such as the PACS application.		

To add the entries above, go to the Admin Portal **Setup > Sites > PACs**.

iRadWhere Port	9090
----------------	------

Interrupt Workflow	Yes
Send to Editor	Yes
Resident Workflow	Yes
Draft Workflow	Yes
Single Sign On	Yes

NS = Not Supported

PowerScribe Driven Mode		Partner Driven Mode	
Launches PACS/RIS	NS	PACS/RIS Launches PS360	Yes
Closes PACS/RIS	NS	PACS/RIS Closes PS360	Yes
Auto-Open PACS images	NS	Auto-open 360 Report when images open in PACS	Yes
Auto-Close PACS images when report is closed in 360	NS	Auto-Close PACS images when report closed in 360	Yes
Mark Exam Dictated / Read	Yes	Mark Exam Dictated/Read	Yes
Allows Multiple Accession #s	Yes	Allows Multiple Accession #s	Yes



The PACS administrator or PACS vendor Representative must perform the following steps.

1. Four integration files (EncInf.dll, MFSR.ini, MFSR_XML.exe, and PS360.xml) must be installed in the Common folder.
2. If you have a customized installation path, modify the External_SR and SampleXML path in the MFSR.ini file.
3. In the PowerScribe 360 Reporting Mode, hostname must be changed to the actual IIS server name or IP address. INFINITT supports http and https for the URL call.
4. In the PowerScribe 360 Reporting Mode, the Type field is optional when calling the G3 PACS viewer. If the Type is not specified, the default type is S.
 - ♦ Type=S: If the type = S, an accession number should be one of the parameters calling the PACS. Type S launches the PACS directly to the images in the Image Viewer. The user can get back to the PACS Worklist and search for other studies.
 - ♦ Type=V: Similar to type S, but type V does not allow the user to get back to the PACS worklist to search for other studies from PACS. Specific studies can only be launched/loaded from the third-party application.
5. This integration definition requires a path for the response file, even if the INFINITT code never uses it.

```
MFSR.ini x
1 [SERVER]
2 Use_ExternalSR=Y
3 External_SR = C:\infinitt\common\MFSR_XML.EXE %an+%id+%pw
4 ENCKEY = 1234
5 SampleXML = C:\infinitt\common\ps360.xml
6 TargetXML = C:\Nuance\xml_in\study.xml
```

Intelrad InteView

Type	Mode	String
Intelrad	PowerScribe ¹	https:// integration.intelrad.com;nuance;nuancefallback;<token_provided_by Intelrad>
	Partner ²	

¹ Indicates that the user works from a worklist in PowerScribe 360 Reporting.

² Indicates that the user is working from a worklist outside of PowerScribe 360 Reporting, such as the PACS application.

To add the entries above, go to the Admin Portal **Setup > Sites > PACs**.

iRadWhere Port	9090
----------------	------

Interrupt Workflow	Yes
Send to Editor	Yes
Resident Workflow	Yes
Draft Workflow	Yes
Single Sign On	Yes

PowerScribe Driven		Partner Driven	
Launches PACS/RIS	Yes	PACS/RIS Launches PS360	Yes
Closes PACS/RIS	Yes	PACS/RIS Closes PS360	Yes
Auto-Open PACS images	Yes	Auto-open 360 Report when images open in PACS	Yes
Auto-Close PACS images when report is closed in 360	Yes	Auto-Close PACS images when report closed in 360	Yes
Mark Exam Dictated / Read	Yes	Mark Exam Dictated/Read	Yes
Allows Multiple Accession #s	Yes	Allows Multiple Accession #s	Yes



Version Requirement: Your PACS should be at IV-4-6-1-R16 (4-6-1-P129) or -IV-4-7-1-R5 (4-7-1-P83) or higher.

Intelerad Integration

Intelerad text field, enter the following four parameters (which must be provided by Intelerad or the customer):

Intelerad server URL
Inteleviewer password
Inteleviewer fallback user
Authentication token

Example:

`https://integration.intelerad.com;nuance;nuancefallback;0d855d6732104911c9a6712d90a2cc3c`

Intuitive

Type	Mode	String
	PowerScribe ¹	Not Supported (NS)
Dynamic Imaging	Partner ²	5500

¹ Indicates that the user works from a worklist in PowerScribe 360 Reporting.

² Indicates that the user is working from a worklist outside of PowerScribe 360 Reporting, such as the PACS application.

To add the entries above, go to the Admin Portal **Setup > Sites > PACs**.

iRadWhere Port	9090
----------------	------

Interrupt Workflow	Yes
Send to Editor	Yes
Resident Workflow	Yes
Draft Workflow	Yes
Single Sign On	Yes

PowerScribe Driven		Partner Driven	
Launches PACS/RIS	NS	PACS/RIS Launches PS360	Yes
Closes PACS/RIS	NS	PACS/RIS Closes PS360	Yes
Auto-Open PACS images	NS	Auto-open 360 Report when images open in PACS	Yes
Auto-Close PACS images when report is closed in 360	NS	Auto-Close PACS images when report closed in 360	Yes
Mark Exam Dictated / Read	NS	Mark Exam Dictated/Read	Yes
Allows Multiple Accession #s	NS	Allows Multiple Accession #s	Yes



PACS and PowerScribe 360 Reporting are installed on separate machines.

The Intuitive PACS uses port 5500 in the PACS Partner Driven (Dynamic Imaging) argument in PS360.


The Intuitive Engineer needs to modify the socket_config.xml per the example provided. The “
” at the end of the ACCESSION string is a system requirement and will not pass the Accession to PS360 if this is missing.

```
<SocketConfigs>
<!--IQ Socket Configuration-->
<Config Data="$ACCESSION$&#10;" Host="192.168.2.47" LocalIP="192.168.2.7" Modality=""
Name="Default" Port="5500"/>
</SocketConfigs>
```


Konica Minolta Exa PACS

Type	Mode	String
	PowerScribe ¹	
PowerScribeXML	Partner ²	C:\ [input-folder]\[input-file].xml;c:\[output-folder]\[output-file].xml
¹ Indicates that the user works from a worklist in PowerScribe 360 Reporting.		
² Indicates that the user is working from a worklist outside of PowerScribe 360 Reporting, such as the PACS application.		

To add the entries above, go to the Admin Portal **Setup > Sites > PACs**.

PACS:		Type	Name	Description	Mode
		PowerScribe XML	PowerScribe XML		Partner driven: C:\Nuance\Konica\input.xml;C:\Nuance\Konica\output.xml
					

iRadWhere Port	9090
----------------	------

Interrupt Workflow	NS
Send to Editor	NS
Resident Workflow	NS
Draft Workflow	NS
Single Sign On	NS

PowerScribe Driven		Partner Driven	
Launches PACS/RIS	NS	PACS/RIS Launches PS360	NS
Closes PACS/RIS	NS	PACS/RIS Closes PS360	NS
Auto-Open PACS images	NS	Auto-open 360 Report when images open in PACS	Yes
Auto-Close PACS images when report is closed in 360	NS	Auto-Close PACS images when report closed in 360	NS
Mark Exam Dictated / Read	NS	Mark Exam Dictated/Read	Yes
Allows Multiple Accession #s	NS	Allows Multiple Accession #s	NS

Magview

Type	Mode	String
	PowerScribe ¹	
	Partner ²	
¹ Indicates that the user works from a worklist in PowerScribe 360 Reporting. ² Indicates that the user is working from a worklist outside of PowerScribe 360 Reporting, such as the PACS application.		

iRadWhere Port	9090
----------------	------

Interrupt Workflow	Yes
Send to Editor	Yes
Resident Workflow	Yes
Draft Workflow	Yes
Single Sign On	Yes

PowerScribe Driven		Partner Driven	
Launches PACS/RIS	Yes	PACS/RIS Launches PS360	Yes
Closes PACS/RIS	Yes	PACS/RIS Closes PS360	Yes
Auto-Open PACS images	Yes	Auto-open 360 Report when images open in PACS	Yes
Auto-Close PACS images when report is closed in 360	Yes	Auto-Close PACS images when report closed in 360	Yes
Mark Exam Dictated / Read	Yes	Mark Exam Dictated/Read	Yes
Allows Multiple Accession #s	Yes	Allows Multiple Accession #s	Yes

McKesson Radiology (HRS)

Type	Mode	String
PowerScribeXML	PowerScribe ¹	Not Supported (NS)
Horizon Med Imaging	Partner ²	C:\Nuance\Horizon;multisite=all

¹ Indicates that the user works from a worklist in PowerScribe 360 Reporting.

² Indicates that the user is working from a worklist outside of PowerScribe 360 Reporting, such as the PACS application.

To add the entries above, go to the Admin Portal **Setup > Sites > PACs**.

iRadWhere Port	9090
----------------	------

Interrupt Workflow	Yes
Send to Editor	Yes
Resident Workflow	Yes
Draft Workflow	Yes
Single Sign On	Yes

PowerScribe Driven		Partner Driven	
Launches PACS/RIS	NS	PACS/RIS Launches PS360	Yes
Closes PACS/RIS	NS	PACS/RIS Closes PS360 (Heavy Client)	HRS
Auto-Open PACS images	NS	Auto-open 360 Report when images open in PACS	Yes
Auto-Close PACS images when report is closed in 360	NS	Auto-Close PACS images when report closed in 360	Yes
Mark Exam Dictated / Read	NS	Mark Exam Dictated/Read	Yes
Allows Multiple Accession #s	NS	Allows Multiple Accession #s	Yes

Supported Workflows

Partner Driven Integration

- Reporting workflow
- Interrupted workflow (resumed from McKesson Radiology Station)



When changing between studies and using the PACS Driven integration, McKesson manages the changing of the report via the `changecontext.xml` file. PowerScribe reads this and makes the client ready to report on the next study with no prompt.

PowerScribe Driven Integration

- Resident/Attending workflow – Reports created as preliminary by a Resident that are reopened later by Attending Residents from PS360 to be signed.
- Interrupted workflow (resumed from PowerScribe 360) – Reports interrupted, saved as drafts, and reopened later to be finished.
- Draft signed later workflow – Reports created on purpose in draft to be finalized later, are then reopened at a later date and finalized.



When changing between studies using the PowerScribe driven (Bi-Directional integration), the user must complete the first report before starting the next. This forces the user to choose the option to save it or cancel (dialog box).

Additional Step

The site IT or Admin, must copy the StartPS360.bat and the StopPS360.bat files into the C:\Horizon directory on each PowerScribe 360 Reporting Client Workstation using the McKesson integration. (You can get these two files from your Nuance Field Service Representative or from McKesson support.)



The site administrator should coordinate with the McKesson engineers to set a logout delay of at least 120 seconds. This allows sufficient time for PS 360 to upload profile data and close before the McKesson HMI closes out.

Additional Settings

For some sites, an additional setting can be added to the Mode entry line for Draft=X, where X will be the text set for ResponseStatus in the response XML file sent to the McKesson integration if the report is closed with a Draft state. For some McKesson PACS sites, this will be Draft=Dictated or Draft=Preliminary. If the Draft=X is not entered in the Mode entry line, the ResponseStatus will be set to Suspended if the report is closed in a Draft state. This customization should be determined by customer personnel and/or the PACS vendor according to the site requirements, to ensure the proper XML response.

PACS:

Type	Name	Description	Mode
Horizon Med Imaging	Horizon Med Imaging	Horizon Med Imaging	<input type="radio"/> PowerScribe driven
			<input checked="" type="radio"/> Partner driven
			<input type="text" value="\\Nuance\Horizon\multisite=all"/>

Page 1

Allowing McKesson HRS-A to Launch / Shut Down PowerScribe 360 Reporting

If you have HRS-A, the user must manually log out of PowerScribe 360 Reporting before logging out of HRS-A. Otherwise, HRS-A will close down before the profile is uploaded, negatively impacting speech profiles and processing.

An alternative for HRS-A is to have the McKesson engineer use the **WM_CLOSE** message to shut down PowerScribe 360 Reporting. By doing this, McKesson can add a brief time delay after the **WM_CLOSE** message is sent to PowerScribe 360 Reporting, allowing PowerScribe 360 Reporting to finish saving its profile before shutting down. The McKesson engineer should consult with the customer to see which alternative they prefer on this operation.

McKesson Engineering Responsibilities

For McKesson to launch the PowerScribe 360 Reporting Client at the McKesson Horizon login, the McKesson engineer must update the McKesson Configuration Specification file to use the batch commands, as shown below:

```
<PreStartReportingApp>Yes</PreStartReportingApp>
<StartApplicationName>c:\Horizon\StartPS360.bat</StartApplicationName>
<StartApplicationArguments>c:\Horizon <server>
_CurrentUserLoginName_</StartApplicationArguments>
<StartApplicationFolder></StartApplicationFolder>
<StopApplicationName></StopApplicationName>
<StopApplicationUtility>c:\Horizon\StopPS360.bat</StopApplicationUtility>
<StopApplicationWindowCaptions></StopApplicationWindowCaptions>
```

Communication status with PS360 and McKesson HRS

User Button Action	Report Status	McKesson Response	Description
Discard (Resident/Attending)	Discarded	Canceled	Specifies that a report was created and then discarded.
Wet (Resident/Attending)	WetRead	Dictated	Specifies that the report status is WetRead.
Draft (Resident/Attending) Prelim (Resident)	Draft	Suspended	Specifies that the report is Draft. NOTE: In RadPortal, set DRAFT=<Status name> to use a different status name. For example, DRAFT=Dictated
Correct (Resident/Attending)	PendingCorrection	Dictated	Specifies that the report status is PendingCorrection. The report enters that status when its author sends it to an editor for correction/transcription.
Reject (Resident/Attending)	CorrectionRejected	Dictated	Specifies that the report status is CorrectionRejected. The report enters that status when the Attending rejects the report approved by the Resident.
Approve (Resident)	PendingSignature	Preliminary	Specifies that the report status is PendingSignature. The report enters this status when approved by the Resident who dictated it, or when signed as preliminary by the Attending.
Reject (Attending)	SignRejected	Dictated	Specifies that the report status is SignRejected. The report enters this status when the Attending rejects the report approved by the Resident.
Sign (Attending)	Final	Final	Specifies that the report status is Final.

Medical-Insight Easy-Viz

Type	Mode	String
	PowerScribe ¹	
	Partner ²	
¹ Indicates that the user works from a worklist in PowerScribe 360 Reporting. ² Indicates that the user is working from a worklist outside of PowerScribe 360 Reporting, such as the PACS application.		

iRadWhere Port	9090
----------------	------

Interrupt Workflow	Yes
Send to Editor	Yes
Resident Workflow	Yes
Draft Workflow	Yes
Single Sign On	Yes

PowerScribe Driven		Partner Driven	
Launches PACS/RIS	Yes	PACS/RIS Launches PS360	Yes
Closes PACS/RIS	Yes	PACS/RIS Closes PS360	Yes
Auto-Open PACS images	Yes	Auto-open 360 Report when images open in PACS	Yes
Auto-Close PACS images when report is closed in 360	Yes	Auto-Close PACS images when report closed in 360	Yes
Mark Exam Dictated / Read	Yes	Mark Exam Dictated/Read	Yes
Allows Multiple Accession #s	Yes	Allows Multiple Accession #s	Yes

Medicalis Professional

Type	Mode	String
	PowerScribe ¹	
	Partner ²	
¹ Indicates that the user works from a worklist in PowerScribe 360 Reporting. ² Indicates that the user is working from a worklist outside of PowerScribe 360 Reporting, such as the PACS application.		

iRadWhere Port	9090
----------------	------

Interrupt Workflow	Yes
Send to Editor	Yes
Resident Workflow	Yes
Draft Workflow	Yes
Single Sign On	NL

PowerScribe Driven		Partner Driven	
Launches PACS/RIS	Yes	PACS/RIS Launches PS360	Yes
Closes PACS/RIS	Yes	PACS/RIS Closes PS360	Yes
Auto-Open PACS images	Yes	Auto-open 360 Report when images open in PACS	Yes
Auto-Close PACS images when report is closed in 360	Yes	Auto-Close PACS images when report closed in 360	Yes
Mark Exam Dictated / Read	Yes	Mark Exam Dictated/Read	Yes
Allows Multiple Accession #s	Yes	Allows Multiple Accession #s	Yes

MedInformatix PACS

Type	Mode	String
PowerScribeXML	PowerScribe ¹	Not Supported (NS)
PowerScribeXML	Partner ²	C:\MedInformatix\PowerScribeIntegration\Shared\study.xml;C:\MedInformatix\PowerScribeIntegration\Shared\status.xml;MultiSite=All

¹ Indicates that the user works from a worklist in PowerScribe 360 Reporting.

² Indicates that the user is working from a worklist outside of PowerScribe 360 Reporting, such as the PACS application.

To add the entries above, go to the Admin Portal **Setup > Sites > PACs**.

iRadWhere Port	9090
----------------	------

Interrupt Workflow	Yes
Send to Editor	Yes
Resident Workflow	Yes
Draft Workflow	Yes
Single Sign On	Yes

PowerScribe Driven Mode		Partner Driven Mode	
Launches PACS/RIS	NS	PACS/RIS Launches PS360	No
Closes PACS/RIS	NS	PACS/RIS Closes PS360	No
Auto-Open PACS images	NS	Auto-open 360 Report when images open in PACS	-
Auto-Close PACS images when report is closed in 360	NS	Auto-Close PACS images when report closed in 360	-
Mark Exam Dictated / Read	NS	Mark Exam Dictated/Read	Yes
Allows Multiple Accession #s	NS	Allows Multiple Accession #s	-

Merge eFilm Fusion PACS

Type	Mode	String
	PowerScribe ¹	Not Supported (NS)
PowerScribeXML	Partner ²	C:\Nuance\Merge\study.xml;c:\nuance\merge\status.xml;password=merge;multisite=all
¹ Indicates that the user works from a worklist in PowerScribe 360 Reporting.		
² Indicates that the user is working from a worklist outside of PowerScribe 360 Reporting, such as the PACS application.		

To add the entries above, go to the Admin Portal **Setup > Sites > PACs**.

iRadWhere Port	9090
----------------	------

Interrupt Workflow	Yes
Send to Editor	Yes
Resident Workflow	Yes
Draft Workflow	Yes
Single Sign On	Yes

PowerScribe Driven Mode		Partner Driven Mode	
Launches PACS/RIS	NS	PACS/RIS Launches PS360	Yes
Closes PACS/RIS	NS	PACS/RIS Closes PS360	Yes
Auto-Open PACS images	NS	Auto-open 360 Report when images open in PACS	Yes
Auto-Close PACS images when report is closed in 360	NS	Auto-Close PACS images when report closed in 360	Yes
Mark Exam Dictated / Read	NS	Mark Exam Dictated/Read	Yes
Allows Multiple Accession #s	NS	Allows Multiple Accession #s	Yes



The PSCs administrator or Merge Representative should refer to the Merge Healthcare PowerScribe 6.4 (or current version) manual for additional configuration information and configuration of the Merge COM+ Application.

MIM Software

Type	Mode	String
	PowerScribe ¹	Not Supported (NS)
PowerScribeXML	Partner ²	C:\Nuance\MIM\study.xml

¹ Indicates that the user works from a worklist in PowerScribe 360 Reporting.

² Indicates that the user is working from a worklist outside of PowerScribe 360 Reporting, such as the PACS application.

To add the entries above, go to the Admin Portal **Setup > Sites > PACs**.

iRadWhere Port	9090
----------------	------

Interrupt Workflow	NS
Send to Editor	NS
Resident Workflow	NS
Draft Workflow	NS
Single Sign On	NS

PowerScribe Driven Mode		Partner Driven Mode	
Launches PACS/RIS	NS	PACS/RIS Launches PS360	NS
Closes PACS/RIS	NS	PACS/RIS Closes PS360	NS
Auto-Open PACS images	NS	Auto-open 360 Report when images open in PACS	Yes
Auto-Close PACS images when report is closed in 360	NS	Auto-Close PACS images when report closed in 360	NS
Mark Exam Dictated / Read	NS	Mark Exam Dictated/Read	Yes
Allows Multiple Accession #s	NS	Allows Multiple Accession #s	Yes

MRS

Type	Mode	String
	PowerScribe ¹	
	Partner ²	
¹ Indicates that the user works from a worklist in PowerScribe 360 Reporting. ² Indicates that the user is working from a worklist outside of PowerScribe 360 Reporting, such as the PACS application.		

iRadWhere Port	9090
----------------	------

NS = Not Supported

Interrupt Workflow	Yes
Send to Editor	Yes
Resident Workflow	Yes
Draft Workflow	NS
Single Sign On	Yes

PowerScribe Driven		Partner Driven	
Launches PACS/RIS	Yes	PACS/RIS Launches PS360	Yes
Closes PACS/RIS	Yes	PACS/RIS Closes PS360	Yes
Auto-Open PACS images	Yes	Auto-open 360 Report when images open in PACS	Yes
Auto-Close PACS images when report is closed in 360	Yes	Auto-Close PACS images when report closed in 360	Yes
Mark Exam Dictated / Read	Yes	Mark Exam Dictated/Read	Yes
Allows Multiple Accession #s	Yes	Allows Multiple Accession #s	Yes

NovaRad

Type	Mode	String
	PowerScribe ¹	Not Supported (NS)
PowerScribeXML	Partner ²	C:\novarad\study.xml

¹ Indicates that the user works from a worklist in PowerScribe 360 Reporting.

² Indicates that the user is working from a worklist outside of PowerScribe 360 Reporting, such as the PACS application.

To add the entries above, go to the Admin Portal **Setup > Sites > PACs**.

iRadWhere Port	9090
----------------	------

Interrupt Workflow	NS
Send to Editor	NS
Resident Workflow	NS
Draft Workflow	NS
Single Sign On	NS

PowerScribe Driven Mode		Partner Driven Mode	
Launches PACS/RIS	NS	PACS/RIS Launches PS360	NS
Closes PACS/RIS	NS	PACS/RIS Closes PS360	NS
Auto-Open PACS images	NS	Auto-open 360 Report when images open in PACS	Yes
Auto-Close PACS images when report is closed in 360	NS	Auto-Close PACS images when report closed in 360	Yes
Mark Exam Dictated / Read	NS	Mark Exam Dictated/Read	Yes
Allows Multiple Accession #s	NS	Allows Multiple Accession #s	NS

OnePACS

Type	Mode	String
	PowerScribe ¹	
	Partner ²	
¹ Indicates that the user works from a worklist in PowerScribe 360 Reporting. ² Indicates that the user is working from a worklist outside of PowerScribe 360 Reporting, such as the PACS application.		

iRadWhere Port	9090
----------------	------

Interrupt Workflow	Yes
Send to Editor	Yes
Resident Workflow	Yes
Draft Workflow	Yes
Single Sign On	Yes

PowerScribe Driven		Partner Driven	
Launches PACS/RIS	Yes	PACS/RIS Launches PS360	Yes
Closes PACS/RIS	Yes	PACS/RIS Closes PS360	Yes
Auto-Open PACS images	Yes	Auto-open 360 Report when images open in PACS	Yes
Auto-Close PACS images when report is closed in 360	Yes	Auto-Close PACS images when report closed in 360	Yes
Mark Exam Dictated / Read	Yes	Mark Exam Dictated/Read	Yes
Allows Multiple Accession #s	Yes	Allows Multiple Accession #s	Yes

PenRad

Type	Mode	String
	PowerScribe ¹	
	Partner ²	
¹ Indicates that the user works from a worklist in PowerScribe 360 Reporting. ² Indicates that the user is working from a worklist outside of PowerScribe 360 Reporting, such as the PACS application.		

iRadWhere Port	9090
----------------	------

Interrupt Workflow	Yes
Send to Editor	Yes
Resident Workflow	Yes
Draft Workflow	Yes
Single Sign On	Yes

PowerScribe Driven		Partner Driven	
Launches PACS/RIS	Yes	PACS/RIS Launches PS360	Yes
Closes PACS/RIS	Yes	PACS/RIS Closes PS360	Yes
Auto-Open PACS images	Yes	Auto-open 360 Report when images open in PACS	Yes
Auto-Close PACS images when report is closed in 360	Yes	Auto-Close PACS images when report closed in 360	Yes
Mark Exam Dictated / Read	Yes	Mark Exam Dictated/Read	Yes
Allows Multiple Accession #s	Yes	Allows Multiple Accession #s	Yes

Philips iSite / IntelliSpace

Type	Mode	String
iRadWhere Active X	PowerScribe ¹	http://localhost:8080
	Partner ²	

¹ Indicates that the user works from a worklist in PowerScribe 360 Reporting.

² Indicates that the user is working from a worklist outside of PowerScribe 360 Reporting, such as the PACS application.

To add the entries above, go to the Admin Portal **Setup > Sites > PACs**.

iRadWhere Port	9090
----------------	------

Interrupt Workflow	Yes
Send to Editor	Yes
Resident Workflow	Yes
Draft Workflow	Yes
Single Sign On	Yes

PowerScribe Driven		Partner Driven	
Launches PACS/RIS	Yes	PACS/RIS Launches PS360	Yes
Closes PACS/RIS	Yes	PACS/RIS Closes PS360	Yes
Auto-Open PACS images	Yes	Auto-open 360 Report when images open in PACS	Yes
Auto-Close PACS images when report is closed in 360	Yes	Auto-Close PACS images when report closed in 360	Yes
Mark Exam Dictated / Read	Yes	Mark Exam Dictated/Read	Yes
Allows Multiple Accession #s	Yes	Allows Multiple Accession #s	Yes

Client Setup



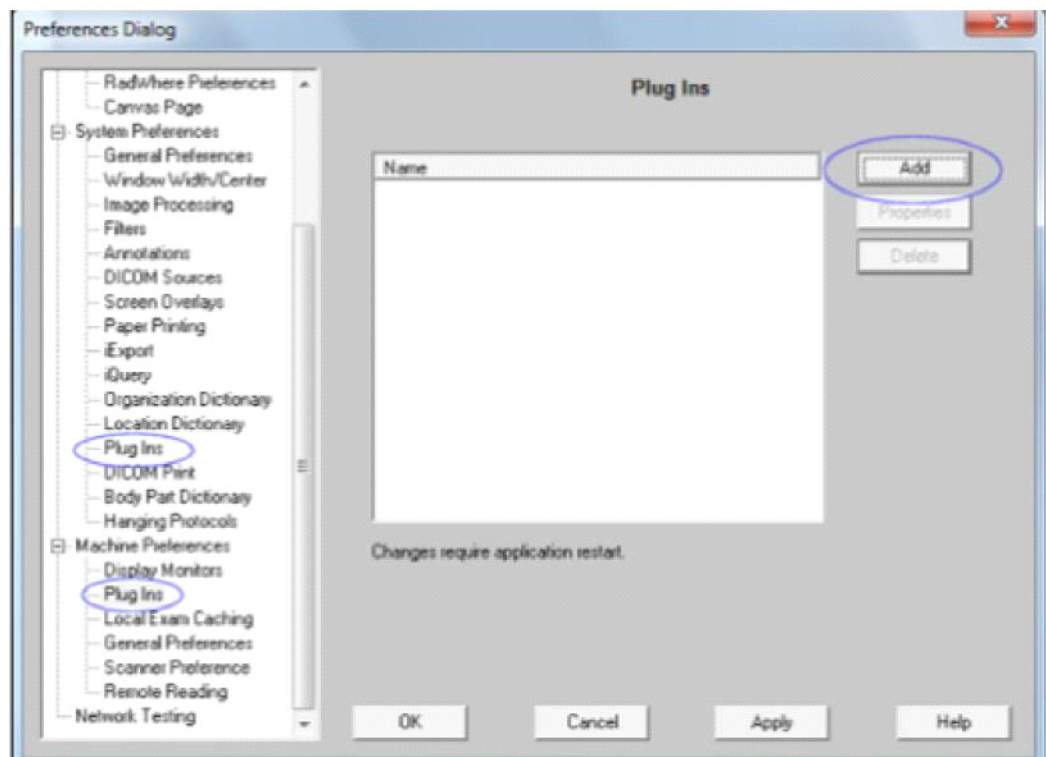
The PACS administrator or PACS Representative must perform the following procedure.

Perform the following steps to set up PowerScribe 360 Reporting for the iSite / IntelliSpace Radiology integration.

1. Log on to iSite / IntelliSpace Radiology.
2. Click the P icon in the upper-right corner of the window to open the Preferences dialog box.
3. Install the plug-in as either a System or Machine plug-in, but not both:

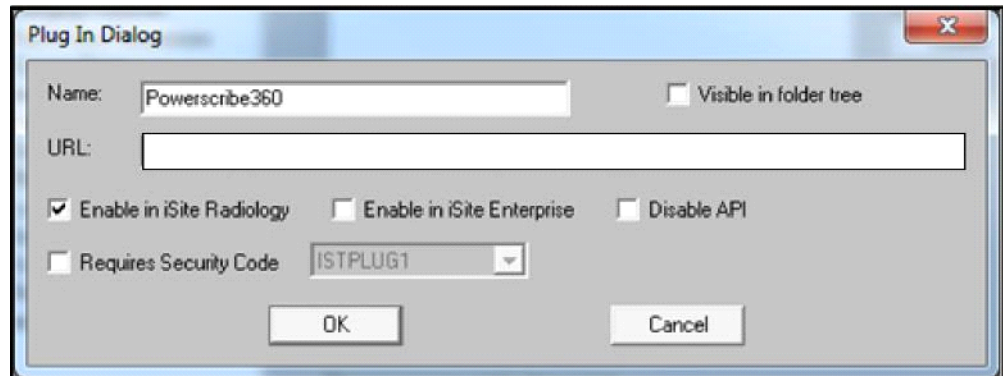


System plug-ins are installed once for all workstations using the iSite / IntelliSpace server.



If you do not want the plug-in available on all of the workstations, you must install the plug-in as a Machine plug-in for each workstation that needs access to the PowerScribe 360 Reporting integration.

4. After making your selection (System or Machine plug-in), click **Add**.
The following Plug In dialog displays.



5. Check **Enable in iSite (IntelliSpace) Radiology**.



iSite Enterprise is not supported.

6. Uncheck the Disable API check box if checked.

The plug-in is located on the PowerScribe 360 Reporting Administrator Portal Web site in a sub-folder named pacs/isite. An example would be

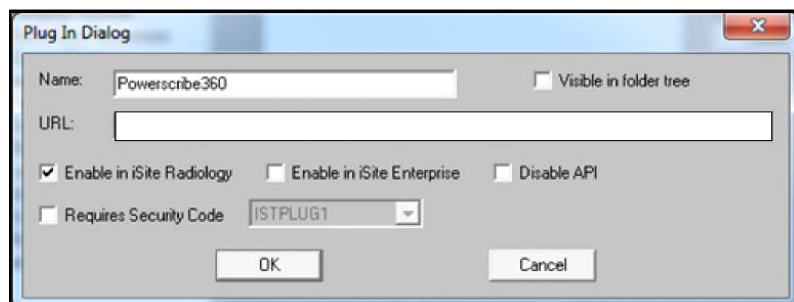
<http://<PS360Server>/RadPortal/pacs/iSite/powerscribe360plugin.htm>

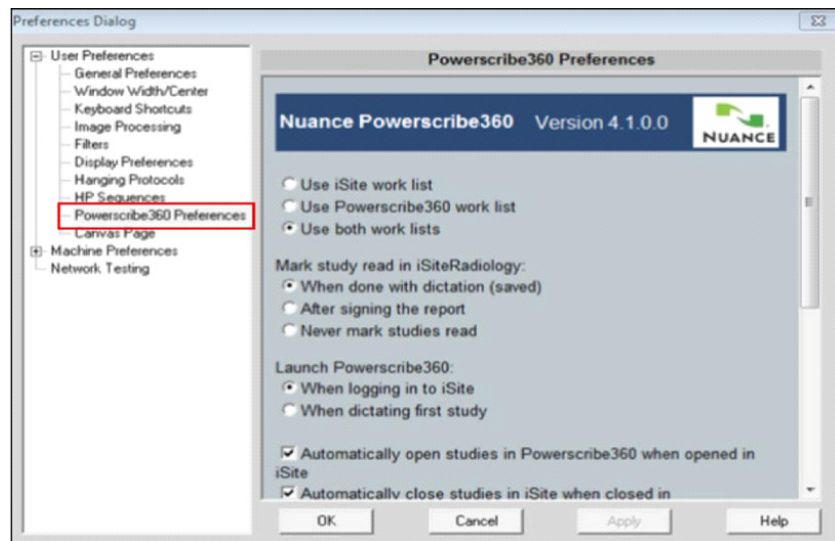
7. Click **OK** to add this plug-in. You are returned to the previous dialog box.
8. Click **OK**.

iSite / IntelliSpace User

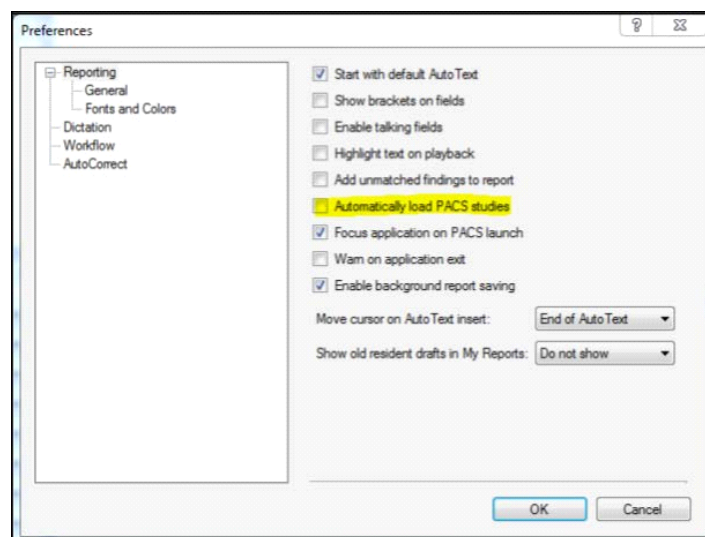
For each iSite / IntelliSpace user:

1. Log on to iSite / IntelliSpace and go to the Preferences Dialog window by clicking on the P icon in the upper right corner of the main window.
2. Under User Preferences, select PowerScribe360 Preferences to open the Powerscribe 360 Preferences window.
3. Select the preferences you want to use for this site.





IMPORTANT: To automatically open studies in iSite / IntelliSpace when running in PowerScribe Driven mode, there is a PowerScribe 360 Reporting user option (Tools > Preferences > Reporting) that you must select in order to launch the study when the report is created or opened in PowerScribe 360 Reporting.



The Philips Advanced Visualization Tool plug-in, used in combination with Philips iSite / IntelliSpace and PowerScribe 360 Reporting, was causing Client Workstation lockups. Customers using the Advanced Visualization plug-in should obtain Version 7.4.6.510 or later, available from Philips. If the Advanced Visualization plug-in version is an earlier version but is not being used, the customer should remove that plug-in to eliminate lockups as well.

Primordial Prism

Type	Mode	String
	PowerScribe ¹	
	Partner ²	
¹ Indicates that the user works from a worklist in PowerScribe 360 Reporting. ² Indicates that the user is working from a worklist outside of PowerScribe 360 Reporting, such as the PACS application.		

iRadWhere Port	9090
----------------	------

Interrupt Workflow	Yes
Send to Editor	Yes
Resident Workflow	Yes
Draft Workflow	Yes
Single Sign On	Yes

PowerScribe Driven		Partner Driven	
Launches PACS/RIS	Yes	PACS/RIS Launches PS360	Yes
Closes PACS/RIS	Yes	PACS/RIS Closes PS360	Yes
Auto-Open PACS images	Yes	Auto-open 360 Report when images open in PACS	Yes
Auto-Close PACS images when report is closed in 360	Yes	Auto-Close PACS images when report closed in 360	Yes
Mark Exam Dictated / Read	Yes	Mark Exam Dictated/Read	Yes
Allows Multiple Accession #s	Yes	Allows Multiple Accession #s	Yes

RadNet eRAD RIS

Type	Mode	String
	PowerScribe ¹	Not Supported (NS)
	Partner ²	
¹ Indicates that the user works from a worklist in PowerScribe 360 Reporting. ² Indicates that the user is working from a worklist outside of PowerScribe 360 Reporting, such as the PACS application.		

iRadWhere Port	9090
----------------	------

Interrupt Workflow	Yes
Send to Editor	Yes
Resident Workflow	Yes
Draft Workflow	Yes
Single Sign On	Yes

PowerScribe Driven		Partner Driven	
Launches PACS/RIS	NS	PACS/RIS Launches PS360	Yes
Closes PACS/RIS	NS	PACS/RIS Closes PS360	Yes
Auto-Open PACS images	NS	Auto-open 360 Report when images open in PACS	Yes
Auto-Close PACS images when report is closed in 360	NS	Auto-Close PACS images when report closed in 360	Yes
Mark Exam Dictated / Read	NS	Mark Exam Dictated/Read	Yes
Allows Multiple Accession #s	NS	Allows Multiple Accession #s	Yes

RamSoft

Type	Mode	String
	PowerScribe ¹	
	Partner ²	
¹ Indicates that the user works from a worklist in PowerScribe 360 Reporting. ² Indicates that the user is working from a worklist outside of PowerScribe 360 Reporting, such as the PACS application.		

iRadWhere Port	9090
----------------	------

Interrupt Workflow	Yes
Send to Editor	Yes
Resident Workflow	Yes
Draft Workflow	Yes
Single Sign On	Yes

PowerScribe Driven		Partner Driven	
Launches PACS/RIS	Yes	PACS/RIS Launches PS360	Yes
Closes PACS/RIS	Yes	PACS/RIS Closes PS360	Yes
Auto-Open PACS images	Yes	Auto-open 360 Report when images open in PACS	Yes
Auto-Close PACS images when report is closed in 360	Yes	Auto-Close PACS images when report closed in 360	Yes
Mark Exam Dictated / Read	Yes	Mark Exam Dictated/Read	Yes
Allows Multiple Accession #s	Yes	Allows Multiple Accession #s	Yes

ScImage

Type	Mode	String
	PowerScribe ¹	Not Supported (NS)
PowerScribeXML	Partner ²	C:\Nuance\XML_IN\study.xml; C:\Nuance\XML_OUT\status.xml;password=Picom365
¹ Indicates that the user works from a worklist in PowerScribe 360 Reporting. ² Indicates that the user is working from a worklist outside of PowerScribe 360 Reporting, such as the PACS application.		

To add the entries above, go to the Admin Portal **Setup > Sites > PACs**.

iRadWhere Port	9090
----------------	------

Interrupt Workflow	NS
Send to Editor	NS
Resident Workflow	NS
Draft Workflow	NS
Single Sign On	Yes

PowerScribe Driven Mode		Partner Driven Mode	
Launches PACS/RIS	NS	PACS/RIS Launches PS360	Yes
Closes PACS/RIS	NS	PACS/RIS Closes PS360	Yes
Auto-Open PACS images	NS	Auto-open 360 Report when images open in PACS	Yes
Auto-Close PACS images when report is closed in 360	NS	Auto-Close PACS images when report closed in 360	NS
Mark Exam Dictated / Read	NS	Mark Exam Dictated/Read	NS
Allows Multiple Accession #s	NS	Allows Multiple Accession #s	NS

Sectra SectraCOM

Type	Mode	String
	PowerScribe ¹	
	Partner ²	
¹ Indicates that the user works from a worklist in PowerScribe 360 Reporting. ² Indicates that the user is working from a worklist outside of PowerScribe 360 Reporting, such as the PACS application.		

iRadWhere Port	9090
----------------	------

Interrupt Workflow	Yes
Send to Editor	Yes
Resident Workflow	Yes
Draft Workflow	Yes
Single Sign On	Yes

PowerScribe Driven		Partner Driven	
Launches PACS/RIS	Yes	PACS/RIS Launches PS360	Yes
Closes PACS/RIS	Yes	PACS/RIS Closes PS360	Yes
Auto-Open PACS images	Yes	Auto-open 360 Report when images open in PACS	Yes
Auto-Close PACS images when report is closed in 360	Yes	Auto-Close PACS images when report closed in 360	Yes
Mark Exam Dictated / Read	Yes	Mark Exam Dictated/Read	Yes
Allows Multiple Accession #s	Yes	Allows Multiple Accession #s	Yes

Siemens Syngo

Type	Mode	String
	PowerScribe ¹	Not Supported (NS)
PowerScribeXML	Partner ²	C:\Nuance\Syngo\boomerang.xml;multisite=All

¹ Indicates that the user works from a worklist in PowerScribe 360 Reporting.

² Indicates that the user is working from a worklist outside of PowerScribe 360 Reporting, such as the PACS application.

To add the entries above, go to the Admin Portal **Setup > Sites > PACs**.

iRadWhere Port	9090
----------------	------

Interrupt Workflow	Yes
Send to Editor	Yes
Resident Workflow	Yes
Draft Workflow	Yes
Single Sign On	Yes

PowerScribe Driven Mode		Partner Driven Mode	
Launches PACS/RIS	NS	PACS/RIS Launches PS360	Yes
Closes PACS/RIS	NS	PACS/RIS Closes PS360	Yes
Auto-Open PACS images	NS	Auto-open 360 Report when images open in PACS	Yes
Auto-Close PACS images when report is closed in 360	NS	Auto-Close PACS images when report closed in 360	Yes
Mark Exam Dictated / Read	NS	Mark Exam Dictated/Read	Yes
Allows Multiple Accession #s	NS	Allows Multiple Accession #s	Yes

Siemens Syngo Via

Type	Mode	String
Vendor Supplied exe	PowerScribe ¹	C:\program files (x86)\siemens\syngo.via\bin\ialauncher.exe;- type READ -a {accession}
	Partner ²	Not Supported (NS)

¹ Indicates that the user works from a worklist in PowerScribe 360 Reporting.

² Indicates that the user is working from a worklist outside of PowerScribe 360 Reporting, such as the PACS application.

To add the entries above, go to the Admin Portal **Setup > Sites > PACs**.

The screenshot shows the 'PACS' configuration page in the Siemens Syngo Via Admin Portal. The 'PACS' tab is highlighted in yellow. The page includes fields for 'Name', 'Description', 'Facility Code', 'Username', and 'Password'. Below these fields is a table with columns 'Type', 'Name', 'Description', and 'Mode'. The 'PACS' tab is selected, and the table is currently empty.

iRadWhere Port	9090
----------------	------

Interrupt Workflow	Yes
Send to Editor	Yes
Resident Workflow	Yes
Draft Workflow	Yes
Single Sign On	Yes

PowerScribe Driven Mode		Partner Driven Mode	
Launches PACS/RIS	Yes	PACS/RIS Launches PS360	NS
Closes PACS/RIS	NS	PACS/RIS Closes PS360	NS
Auto-Open PACS images	Yes	Auto-open 360 Report when images open in PACS	NS
Auto-Close PACS images when report is closed in 360	Yes	Auto-Close PACS images when report closed in 360	NS
Mark Exam Dictated / Read	Yes	Mark Exam Dictated/Read	NS
Allows Multiple Accession #s	NS	Allows Multiple Accession #s	NS

TeraRecon

Type	Mode	String
	PowerScribe ¹	
	Partner ²	
¹ Indicates that the user works from a worklist in PowerScribe 360 Reporting. ² Indicates that the user is working from a worklist outside of PowerScribe 360 Reporting, such as the PACS application.		

iRadWhere Port	9090
----------------	------

Interrupt Workflow	Yes
Send to Editor	Yes
Resident Workflow	Yes
Draft Workflow	Yes
Single Sign On	Yes

PowerScribe Driven		Partner Driven	
Launches PACS/RIS	Yes	PACS/RIS Launches PS360	Yes
Closes PACS/RIS	Yes	PACS/RIS Closes PS360	Yes
Auto-Open PACS images	Yes	Auto-open 360 Report when images open in PACS	Yes
Auto-Close PACS images when report is closed in 360	Yes	Auto-Close PACS images when report closed in 360	Yes
Mark Exam Dictated / Read	Yes	Mark Exam Dictated/Read	Yes
Allows Multiple Accession #s	Yes	Allows Multiple Accession #s	Yes

Manual Revision History

Note: In this table the most recent changes are first by date.

Date	Sec	Page	Change (Paragraph, Sentence, Figure, Table, etc.)	Initials
6/13/18	17	1	Added New integration for Fuji Synapse v5	BW
4/4/18	1	1	Added Notes.	BW
	2	1	Changed Auto-Close to No. Fixed PS Driven Modes	
11/29/17	41	1	ScImage - Updated PowerScribeXML Partner.	BW
4/24/17	20	ALL New	Changed Title and updated content for GE Centricity RIS-IC.	BW
	21		Added New integration for GE RA1000 for Centricity PACS.	
4/6/17	40	1	ScImage - Updated Mark Exam Dictated/Readand Allows Multiple Accession #s as NS	DW/BW
3/22/17	16	1	Add Fuji Sinapse v4.4	JG/BW MS/BW
	27	3	Added content from I-3743-002, Allowing McKesson HRS-A to Launch / Shut Down PowerScribe 360 Reporting and McKesson Engineering Responsibilities	
3/14/17	All	All	First Draft	SP

Date	Sec	Page	Change (Paragraph, Sentence, Figure, Table, etc.)	Initials
12/5/16	1	All	Swapped contents in chapter 1 with contents in chapter 2	
	2	Al	Swapped contents in chapter 2 with contents in chapter 1	
	Cover	-	Round Two:	
	1	1	Title changed. (1) - Removed the word <i>from</i> in title: Upgrade from RadWhere or PS360 V1.x (2) - Inserted note: If you are upgrading from V 2.x or higher, STOP and refer to Upgrading Version 2 and Above — PN 889679 for the proper procedure. (3) - Changed section from Upgrading from Prior Hot Spare Installations to Hot Spares	
	1	2	(4) - Deleted section: Stop the Services Prior to performing the upgrade, you must stop the RadBridge Service and World Wide Web Publishing Service. (5) - Changed section title from: (RadWhere Only) Create the COMM4 Database to: RadWhere Only Create the COMM4 Database	
	1	3	(6) - Changed section title from: Copy DragonUsers Folder to Backup DragonUsers Folder (7) - Changed section title from: Copy Wave Folder to Backup Wave Folder	
	1	4	(8) - Changed bullet: X:\Nuance\DragonUsers\PS360_BackupUsers to DragonUsers (9) - Added bullet: DragonUsersTemp	
	1	8	(10) - Deleted section: Upgrade Windows OS If the site will be using a hot spare, you will need to upgrade the OS Application of the MSSQL Server to the Enterprise version by applying the new/proper license keys.	
	1	9	(11) - Deleted section: Upgrade MSSQL If the site will be using a hot spare, you will need to upgrade the MSSQL Server Application to the Enterprise version by applying the new/proper license keys.	
	2	1	(12) - Changed Powerscribe to PowerScribe (13) - Changed Title from Introduction to Preinstallation Checklist (14) - Deleted note: If you are upgrading from V 2.x or higher, STOP and refer to Upgrading Version 2 and Above — PN 889679 for the proper procedure. (15) - Added New Section Verify Internet Access (16) - Added New Section from chapter 3, and changed the title from Verify the Server is Configured Properly to Verify Server Configuration (17) - Added Download the Software Section (18) - Added Extract the Dragon Installers Section (19) - Added New Section from chapter 3, and deleted the bullet: X:\Nuance\WebServiceLogs	
	3	1	(20) - Changed title from Application Installation to Installation (21) - Deleted section: Check Internet Network Access (22) - Deleted: PowerShare requires access to the following: The range for all external IPs is 216.52.195.129/26. Specific IPs for network traffic URLs are: upload1.seemyradiology.com:443 = 216.52.195.130	

Date	Sec	Page	Change (Paragraph, Sentence, Figure, Table, etc.)	Initials
12/5/16 (continued)	3	3	(23) - Deleted/Moved section: Verify the Server is Configured Properly (24) - Deleted/Moved section: Create Nuance Application Directories (25) - Deleted/Moved section: Software Download (26) - Deleted/Moved section: Extract the Dragon Files (27) - Step 1: deleted 4_0, and 6 and replaced the 6 with X, In the X:\Software\360_Install\4_0\Step_01_DBSetup_6.x.xx.x folder, double-click DBsetup.exe.	
	3	9	Added notes: (28) - If you are installing a SQL only server, you must now install the Management Reports to this server. (29) - For a Cluster Configuration: Install the Applications on BOTH nodes. Use the Application Cluster Virtual Name for URL and the SQL Virtual Cluster Name for SQL connections. When installing to Node 2, you must first fail the SQL over to Node (two) 2. If you do not, the installer will not see SQL as being active, only on App/SQL cluster. (30) - Inserted Step 1, changed 6 to X, - X:\Software\360_Install\4_0\Step_02_ApplicationServer_X.x.xx.x (31) - Inserted Step 2 (32) - Inserted Step 3, changed for Reports only. Need new image. (33) - Deleted Step 4, and inserted new content for Prerequisite Checks dialog.	
	3	11	(34) - Deleted Create the SQL Maintenance Plan, notes, links and image. (35) - Inserted Step 4, Step 5, Step 6. (36) - Changed In the X:\Software\360_Install\4_0\Step_02_ApplicationServer_6.x.xx.x folder, double-click the setup.exe. to In the X:\Software\360_Install\4_0\Step_02_ApplicationServer_X.x.xx.x folder, double-click the setup.exe.	
	3	12	(37) - Inserted Steps: *If this is an combination SQL and Application Server Click Select All . *If this is an Application ONLY server, select ALL modules EXCEPT Management Reports. *Click Next .	
		16	(38) - Deleted Note, and text	
		17	(39) - Delete object. (40) - Deleted Nuance	
		37	(41) - Deleted note: If for any reason the database is patched prior to upgrading Portal, it will be necessary to run the RASGUI.exe in inetpub to reset all the user passwords with the new encryption. Otherwise, the logins will fail when attempting to log in to the Portal. (42) - Deleted 6: in: To find these source paths, use the ellipses buttons for each entry and browse to the location where you extracted the Step_03_PowerScribe360_6x.x.xx.x files. These will be in the path under that step.	
		43	(43) - Inserted Note: IF you have already installed the client admin to Node 1 of a cluster and are installing to Node 2 of a cluster DO NOT perform step 17. Skip to Step 19 (44) - Deleted Step 21: From Windows Explorer, navigate to: X:\nuance\DragonUsers X:\nuance\DragonUserTemp (45) - Deleted Step 22: Verify that the Share Permissions for DragonUsers and DragonUserTemp are set so that the Services account and the IIS_IUSRS Group have full rights. For Security purposes, the Everyone account should not have rights to these directories.	
	3	44	(46) - Inserted title: Configure MIME Settings	

Date	Sec	Page	Change (Paragraph, Sentence, Figure, Table, etc.)	Initials
12/5/16 (continued)	4	1	(47) - Deleted in Step 2: of commissure	
		2	(48) - Added/Deleted Note: The RAS application must have access to the drop folder.	
	5	3	(49) - Create and move Microsoft SQL 2014 Express Installation section to a new Appendix (4)	
		7	(50) - Typo: Administrative rights.	
	7	2	(51) Changed Enrollment and Agency Installation to Remote Diagnostics Installation	
		5	(52) - Enroll the Agency for Remote Diagnostics to Enroll the Server	
	5		(53) - Changed Agency Installation title to Remote Diagnostics Installation	
			SUS Changes:	
		1	(54) - Delete notes:	
			If you are performing an upgrade from PowerScribe 360 Reporting V1.x You must uninstall SQL Express, Dragon, and SUS and install the newer versions.	
	7		If you are asked to install the product in a method or configuration not outlined in this installation manual, you should stop and consult with Service Management.	
			(55) - Change drive to C, Step 1.	
			(56) - Change title: Install Dragon SDK Medical Software on SUS to Install Dragon SDK Medical	
			(57) - Delete the word the in the title of Install the SUS	
			(58) - Step 2, Deleted 3_0_0_2, added SUS Install.	
			(59) - Step 3, Deleted server 3_0_0_2, added folder.	
			(60) - Deleted Configure RadPortal Section	
		1	(61) Changed title for Final Steps to Remote Diagnostics	
			(62) Changed tile for Enable UC to Enable UAC	
			(63) Deleted title Turning on UAC	
			(64) done.	
			(65) - Deleted Overview title and paragraph.	
			(66) - Inserted Note.	
			(67) - Deleted Proxy Servers	
			(68) - Deleted currently	
			(69) - Inserted Note. Deleted Enrollment.	
		5	(70) - Changed paragraph: With the release of Version 2.0 it is now possible to enroll more than a single server using the same model and serial number. This should only be done when both of the following are true:	
			(71) - Deleted Agency Installation and content.	
			(72) - Deleted Enroll the Server	
			(73) - Deleted Prerequisite	
			(74) - Deleted for Enrollment	
		6	(75) - Changed step 4.a.	
		9	(76) - Step 7, bullet 1, changed.	
		10	(77) - Delete figure title.	
		11	(78) - Delete figure title	

Date	Sec	Page	Change (Paragraph, Sentence, Figure, Table, etc.)	Initials