



INOSMART GATEWAY MODUL GW710

OPERATION MANUAL

Revision 3, 19.12.2024

min. Firmware 1.6.221, 1.0.76, 0.0.56

min. App version v4.0.65



Dear User,

Thank you for choosing to purchase the Gateway Module, which will allow you to connect your Inosmart system to your home Wi-fi network and thus manage it remotely.

Although our devices are easy to use, please take a few minutes to read the instructions below. We have prepared all the information you need to pay attention to, both for the first time and for subsequent use. To help you understand, you can also visit our website www.inosmart.info/bt and watch the accompanying video content on how our system works and how to use it.

We wish you a pleasant and easy use.



TABLE OF CONTENTS

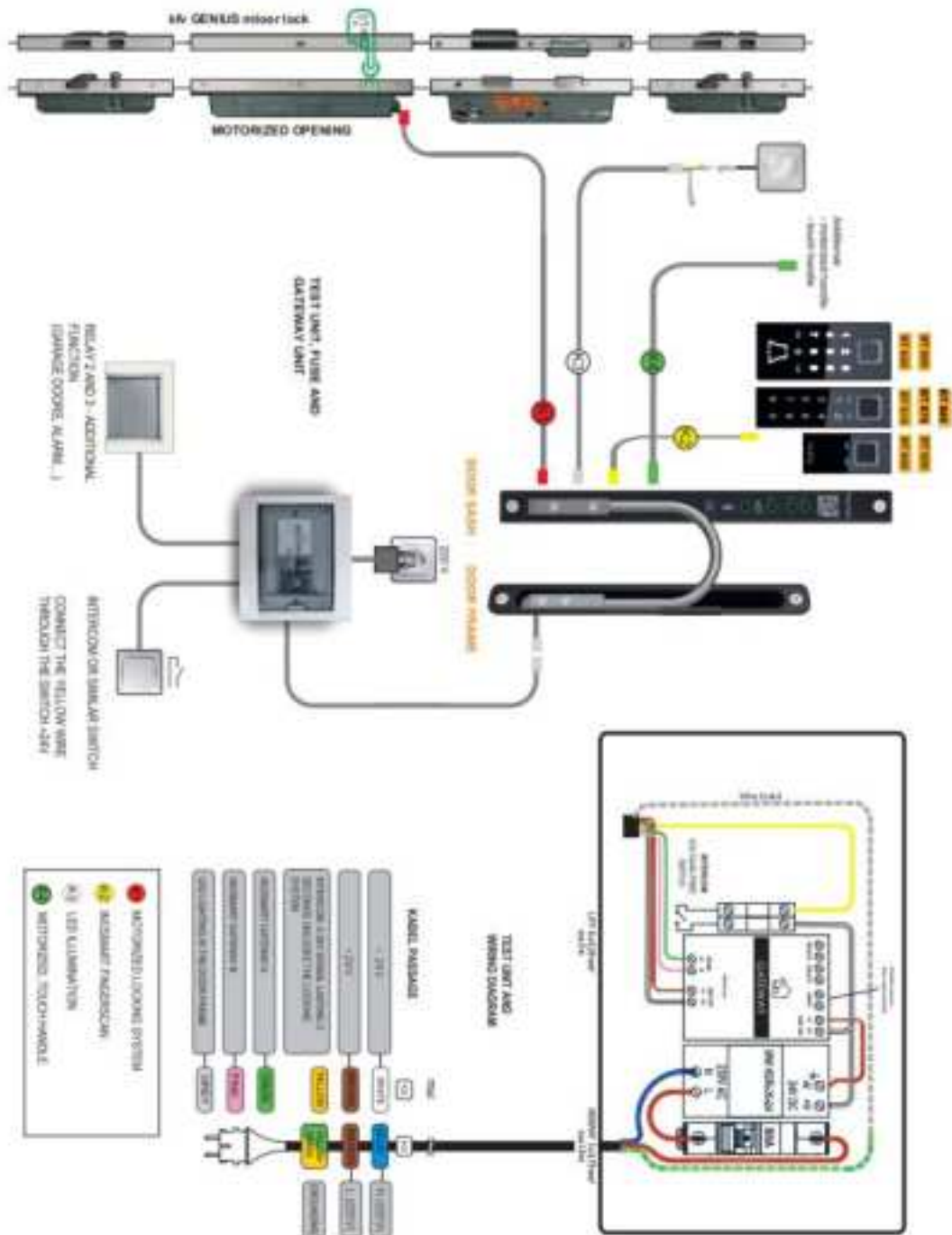
INOSMART GATEWAY MODUL GW710.....	1
OPERATION MANUAL.....	1
GATEWAY MODULE AND ITS FUNCTIONS.....	2
CONNECTION SCHEME.....	3
CONNECTING THE GATEWAY MODULE TO THE INTERNET	4
TROUBLESHOOTING PROBLEMS CONNECTING TO THE INTERNET	5
RESTORE FACTORY SETTINGS.....	5
ACTIVATION OF ADDITIONAL RELAYS.....	6

GATEWAY MODULE AND ITS FUNCTIONS

- Remote unlocking via smartphone
- Remote control of the Inosmart system
- 2 additional relays for connecting external devices (250V AC 3A, 30V DC 3A)
- Connection for door open/closed sensor
- Connection to the Internet network: WLAN or RJ-45
- 24V power supply
- Installation on a DIN rail

The Gateway module uses TCP ports 8883 and 18083 for communication, which must be opened on the firewall. In case of connection via WiFi, 2.4Ghz communication must be enabled on the home router (disable 5G).

CONNECTION SCHEME



CONNECTING THE GATEWAY MODULE TO THE INTERNET

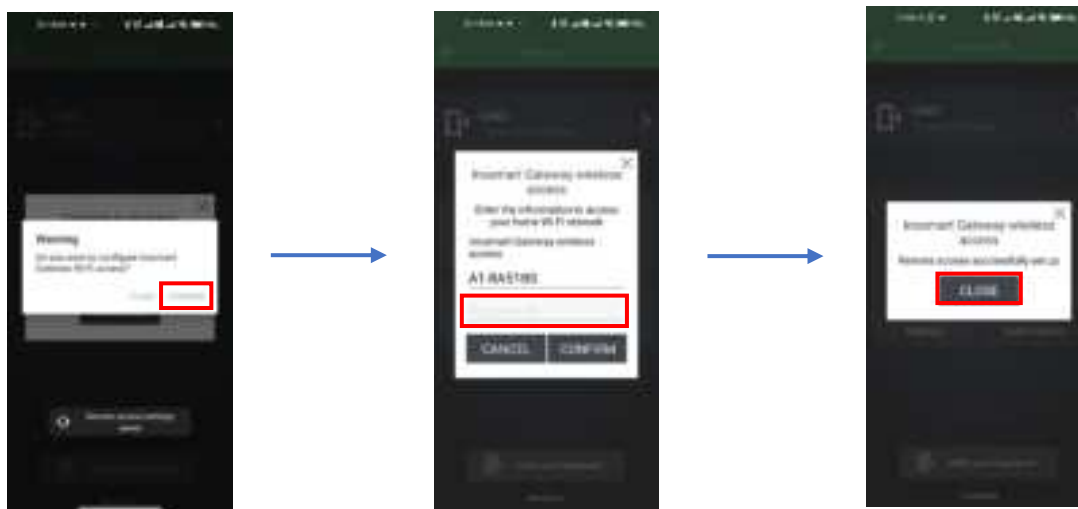
After successfully connecting the Inosmart App to the control unit, all that is left to do is to connect to the internet using the Gateway module.

This can be configured in two ways:

- 1 - Via a local Wi-Fi network
- 2 - Network cable connections

When the Gateway module is detected by the control unit, it offers us a setting to connect to the module when connecting for the first time.

Inosmart App: **CONNECT TO THE INTERNET – MODE 1**

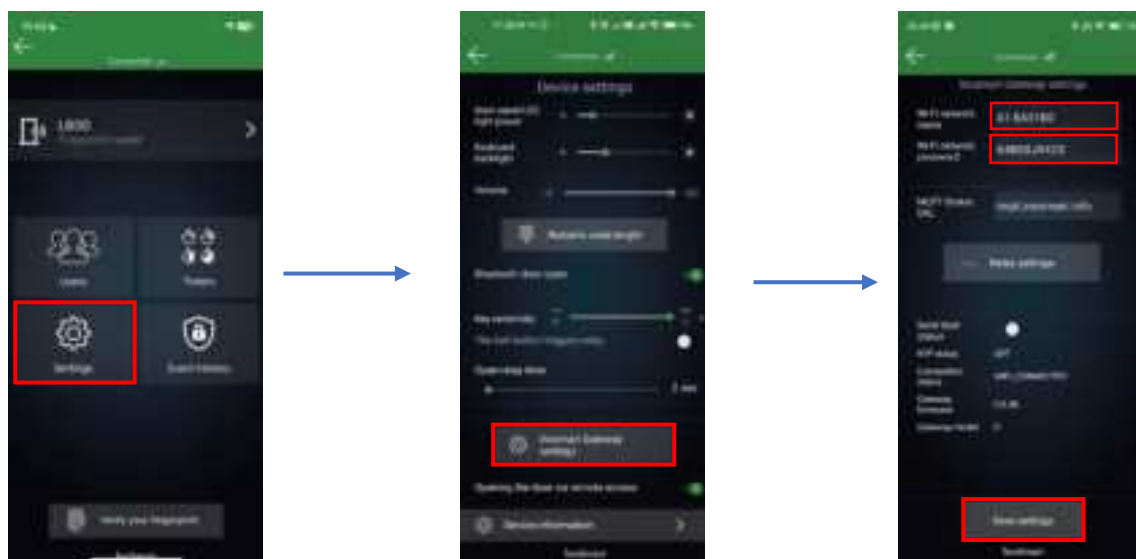


If you don't set up access immediately, you can do so at any time later.

In the "Settings" menu, click "Inosmart Gateway Settings" and enter the name of the Wi-fi network and its password, then confirm by clicking "Save Settings".

These are only available when connected via Bluetooth.

Inosmart App: **CONNECT TO THE INTERNET – MODE 2**



Once the settings are saved, the Gateway module connects to the home Wi-fi network and the MQTT server, signalled by two **green** LED lights.

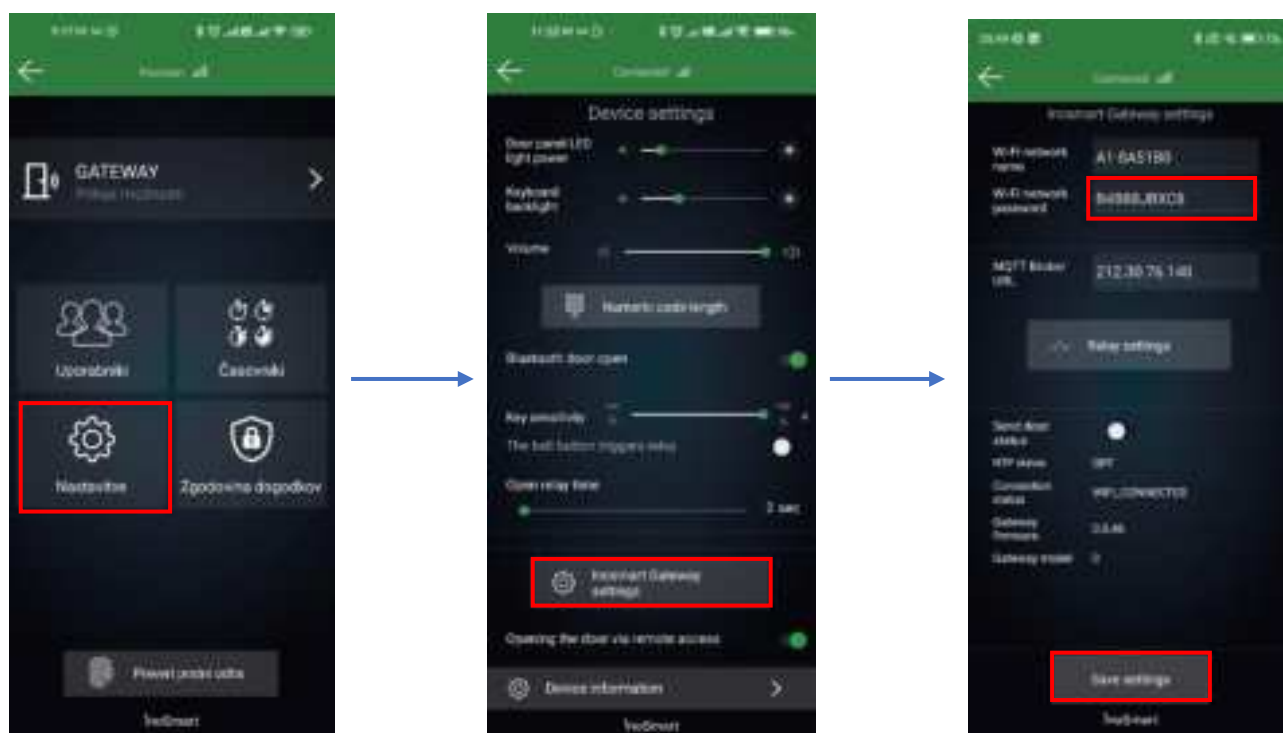


In the case of connecting a LAN cable, the connection is made automatically, the **green** LED for connection on the Gateway module then flashes.

TROUBLESHOOTING PROBLEMS CONNECTING TO THE INTERNET

If the connection does not work, you need to enter the server IP "212.30.76.140" in the MQTT broker URL field instead of "mqtt.inosmart.info".

Inosmart App: IP for connection



In case of problems connecting to the Internet network, it is necessary to check whether TCP ports **8883** and **18083** are open on the firewall to the URL **mqtt.inosmart.info**.

RESTORE FACTORY SETTINGS



Hold the reset button on the Gateway module for 10 seconds. After reset, the **red** LEDs on the Gateway Module will start flashing. All settings are erased and the device is restored to factory settings.

ACTIVATION OF ADDITIONAL RELAYS

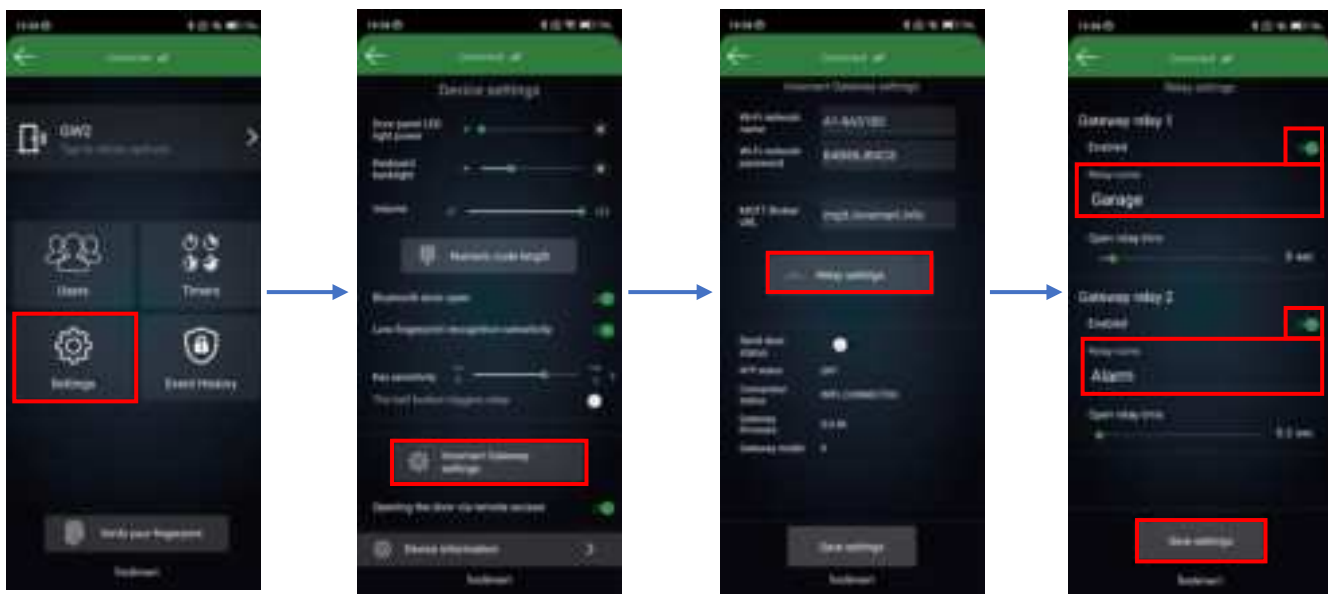
In addition to the door in which the device is installed, you can unlock two additional (side or garage) doors or turn on/off any two devices connected to the control unit. You can enable individual people to open either additional e.g. garage door or main door and additional door together. Additional relays can be activated with all user identification methods: FINGERPRINTS, TELEPHONES and NUMERICAL CODES. For the selected persons, under each section, specify what the individual identification enables/disables.

With the Gateway module, additional relays can also be triggered remotely.



The activation of the additional relay can only be set via the Inosmart App.

Inosmart App: Switching on and naming individual additional relays



Inosmart App: Activation of individual relays

