



With SHIHE at home brings prosperity

Excellent Four-Port  
Mahjong Machine

# Product User Manual

Please read this manual carefully before use and keep it properly



Entertainment life



Our company has passed the ISO9001: 2000 quality system certification

Guangzhou Guohe Mechatronic Co., LTD

Thank you very much for choosing our automatic mahjong machine.

Our company is a professional manufacturer of automatic mahjong machines.

The automatic mahjong machine introduces high-tech microcomputer intelligent system components, and adopts the internationally leading digital photochemical electrical integrated computer system. It has the microcomputer control function, further improves the working performance of the mechanical structure at the same time, expands the functional range, simplifies the circuit, and fully guarantees the reliability of the circuit control system. It is simple to operate and easy to maintain, with the advantages of fast card shuffling time, low machine noise, low card error rate. The products sell well in mainland China, Hong Kong, Taiwan, and are exported to Japan, Southeast Asia and other countries and regions.

Our company always adheres to the tenet of "survival by quality, benefit by management, and development by service" to strengthen quality management. Manufacturing high-quality products is our eternal pursuit.

To provide high-quality products at reasonable prices to meet customer needs.

The copyright of this manual belongs to  
Guangzhou Guohe Mechatronic Co.,  
LTD.

No reproduction without permission.

**Guangzhou Guohe Mechatronic Co., LTD**

Address: Panlong Industrial Park, Liwan District, Guangzhou  
National after-sales service telephone: 020-81511811





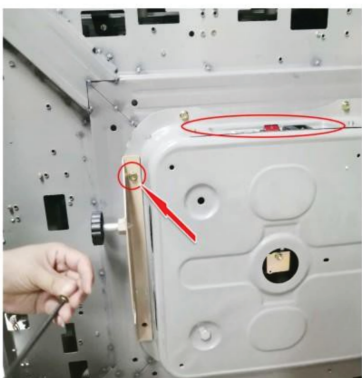
Installation Diagram of  
Folding Legs



Step 1: Install the chassis



Step 2: Install the universal  
wheels of the chassis



Step 3: Install the universal  
wheels of the chassis



Step 4: Install the folding  
feet



Step 5: Install the folding  
feet and lift the machine



Step 6: Install the USB  
cable of the frame



Step 7: Install the frame



Step 8: Install the frame



Step 9: Install the edge cover

○

Installation Diagram of  
Table Legs



Step 1: Install the accessories of the legs



Step 2: Install the pads of the legs



Step 3: Install the crossbars of the legs



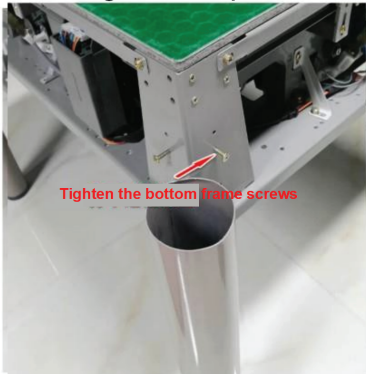
Step 4: Installation of crossbars of the legs is completed



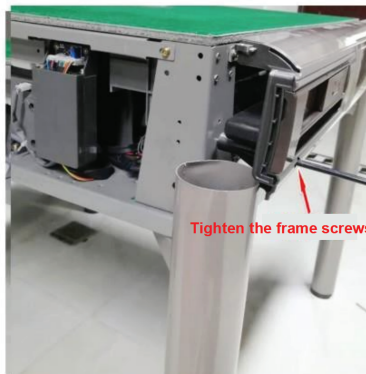
Step 5: Connect the legs to the main structure



Step 6: Install the USB cable of the frame



Step 7: Install the frame



Step 8: Install the frame



Step 9: Install the edge cover

## About Folding

If folding is needed after playing, the two sets of mahjong tiles must be taken out and put away before folding.

If there is a card in the machine when folding, it will cause the mahjong tiles to fall into the machine and get stuck.

## Desktop cleaning and tiles collection

When not playing the game, both sets of tiles can be stored in the mahjong machine and get ready for the next game. The specific methods are as follows:

Step1: Wait for the previous set of tiles to be shuffled.

Step2: Press any lifting key to raise the operation panel.

Step3: Push the tiles on the table into the big plate.

Step4: Press and hold both dice keys at the same time, and wait for initialization.

Step5: Shut down after initialization is completed.

## Maintenance Instructions

This section only introduces electrical maintenance knowledge, which is only for reference of maintenance staff.

Common faults and cause analysis:

1. The power supply is connected, but there is no power on the motherboard. The fuse may be burnt out. First, find out the cause of the burnt fuse. Generally, it is caused by the short circuit of the motor wire. Check whether the motor wire is cut off by the transmission mechanism to cause short circuit, or whether the cable skin is damaged.

2. The indicator light of the operation panel flickers randomly or the keys do not work properly. It is usually because the connector between the signal line of the operation panel and the main board has poor contact due to long-term corrosion.

3. The dice motor does not work. Usually, the dice motor is stuck, or the drive circuit is burnt as a result.

4. The motor does not work or the bidirectional motor can rotate in only one direction. It is usually because the connector between the motor and the mainboard is poorly contacted, or the corresponding drive circuit on the mainboard is damaged.

5. The motor does not stop after running to the set position. It is usually because the connector between the corresponding sensor and the motherboard is in poor contact, or the sensor itself is aging due to long-term use, and cannot meet the performance requirements.

6. Sometimes there is a shuffle error. It may be that the card is too dirty or the sensor itself has been aged due to long-term use, or it cannot meet the sensitivity requirements.

7. The lifting plate or lifting rod stops at the wrong position. It may be that the transmission mechanism is worn and leads to offset, which requires readjustment.

8. The voice is mute or low. It may be due to poor contact of the connector or long-term corrosion failure of the interior of the voice potentiometer.

9. Wrong shuffle gear. It may be due to the poor internal contact caused by the long-term use of the gear puller, or it may be due to the poor contact with the connector between the main board.

10. The number of tiles on one player is often wrong. If the number of tiles is more than the normal value, it is usually because the performance of the head sensor is degraded. If the number of plates is less than the normal value, it is usually because the double counter is faulty.



◎ Basic operating sequence

1. Prepare

Remove the edge cover and lift the panel  
Please follow the table to select the number of tiles you require. After adjusting the gear, press the two corresponding dice keys for 5 seconds and reset (or turn off for 5 min)  
Special play, our company can customize according to customer requirements.

Number panel	Sum	East, South, West, North (Key)	Number panel	Sum	East, South, West, North (Key)
0		Debug	20	104	13, 13, 13, 13
1	18	9, 0, 0, 0 (Free gear)	21	102	17, 17, 17, 0
2	160	20, 20, 20, 20	22	102	13, 13, 13, 12
3	152	19, 19, 19, 19	23	100	13, 12, 13, 12
4	148	19, 18, 19, 18	24	96	16, 16, 16, 0
5	144	18, 18, 18, 18	25	96	12, 12, 12, 12
6	142	18, 18, 18, 17	26	92	12, 11, 12, 11
7	140	18, 17, 18, 17	27	88	11, 11, 11, 11
8	138	18, 17, 17, 17	28	84	14, 14, 14, 0
9	136	17, 17, 17, 17	29	84	12, 10, 10, 10
10	132	17, 16, 17, 16	30	84	11, 10, 11, 10
11	128	16, 16, 16, 16	31	80	10, 10, 10, 10
12	126	16, 16, 16, 15	32	72	12, 12, 12, 0
13	124	16, 15, 16, 15	33	72	9, 9, 9, 9
14	120	15, 15, 15, 15	34	54	9, 9, 9, 0
15	116	15, 14, 15, 14	35	40	10, 0, 10, 0
16	112	14, 14, 14, 14	36	36	18, 0, 0, 0
17	110	14, 14, 14, 13	37	36	9, 0, 9, 0
18	108	18, 18, 18, 0	38	32	16, 0, 0, 0
19	108	14, 13, 14, 13	39	137	17, 17, 17, 17.5

Put down the panel and install the edge cover.

2. Operation

- Press the power switch. When the switch light is on, and the SET reset indicator light on the central round door of the desktop is on, or the dealer indicator light flashes in turn, it indicates that the machine is powered on.
  - Please press the START lifting button on the central lifting door, and the central lifting door will open automatically. Put in the first pair of mahjong tiles, and then press the START lifting button, the center lifting door will be closed, and the machine will start to shuffle. After the work is completed, the SET reset indicator lights up, and then press the START lifting button, the center lifting door will open. Put in the second pair of mahjong tiles, and then press the START lifting button, the center lifting door will close. The first pair of tiles rises and the game begins.
- Note: ① When the SET reset indicator is on, press any START button;  
② When the machine shuffles normally, press two START buttons at the same time.
- Names of all parts of general dice box panel
- Note: Gear adjustment instructions: 1. Press and hold the two adjacent dice keys for about 6 seconds to enter the gear shifting mode. (Figure 1). Figure 3  
2. Press the upgrade key + - to change the gear. (Figure 2)  
3. Press one of the dice keys to confirm the shift, and the shift can be completed. (Figure 3)



Daily maintenance

- In order to prolong the service life of the machine, please maintain regularly.
1. Do not place the mahjong machine in a place with strong sunlight, wind, frost, rain, snow or dust, so as not to affect the performance and shorten the service life.
  2. When placing, the desktop should be parallel to the ground without excessive tilt.
  3. Keep the desktop clean.
  4. Don't scratch the flannel of the desktop.
  5. Prevent the liquid from flowing into the mahjong machine so as not to burn the machine or rust the mechanical transmission parts.
  6. Avoid fierce collision, and do not hit the machine hard so as not to damage it.
  7. Clean the mahjong tiles normally and keep them dry, smooth and clean.
  8. Do not put sundries into the big plate so as not to damage the transmission mechanism due to the falling of sundries.
  9. Regularly ask professional maintenance staff to check the internal circuit and clean the dust on the surface of the counting sensor with professional tools. (Users should not handle it by themselves to avoid injury)

Precautions for use

1. Do not put your hand into the big plate to avoid scratching your fingers.
  2. Do not open the desktop to avoid accidental injury when the mahjong machine is working.
  3. Do not put your hand into any place inside the machine when it is on to avoid electric shock or body injury when the mechanism suddenly moves.
  4. Do not let children play with hard mahjong tiles to avoid injury or accidental ingestion.
  5. The mahjong machine is only for healthy entertainment, it is prohibited to gamble.
- solemn statement: The mahjong machine provided by our company are only for entertainment, please do not use them for gambling!

Technical parameter

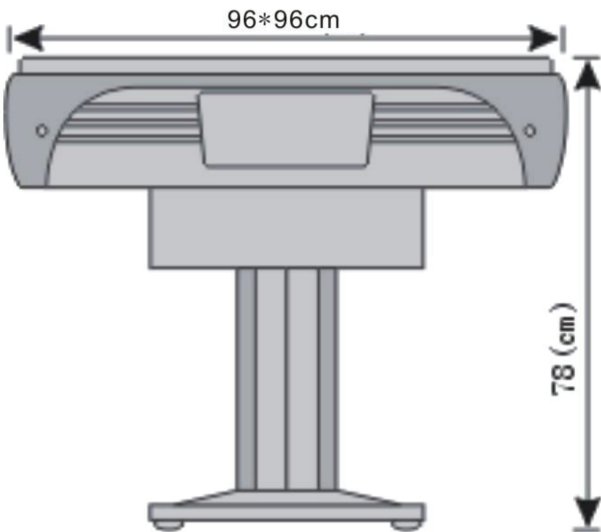
The mahjong machine has three parts when leaving the factory: the main machine, the rack and the frame

Note: No further notice will be given if the technical parameters of this manual are modified. If customers need tea table, chips and upper cover plate, please communicate separately.

Main electrical parameters

Working voltage: AC170V~260V 50±1Hz.  
Applicable ambient temperature: -10℃~+45℃.  
Applicable relative humidity: ≤98%RH (40℃).  
Standby power consumption: ≤5W  
The maximum load capacity of each motor drive port:  
0.5A when AC220V, 0.8A when AC110V.

Rated power supply voltage	Phase	Rated frequency	Power	Weight
220V/110V	1	50Hz	≤100W	约76kg



# Warranty

Product Information			
Product name	Automatic mahjong machine	Configuration level	Grade A
Quality track number		Product model	
Warranty		Warranty expiration date	

Client Information			
Name	(Mr./ Mrs.)	Age	
Purchase institution		Contact number	
Address		Postcode	

Salesman Information			
Sales institution		Maintenance call	
Address		Contact number	
Sale Date		Complaint call	

This card is valid only after being stamped by the sales institution. This card will be invalid upon expiration, thank you!

Seal of manufacturer



This product has been tested and proved to be qualified for delivery.

Seal of after-sales service



National after-sales service telephone : 020 - 81511196