

BOBLOV®

Body Worn Camera User Manual



Model: KJ21

Contents

| | |
|---|----|
| 1. Preface | 2 |
| 2. Format the TF Card | 2 |
| 3. Structure Diagram | 3 |
| 4. Button Operation Statement | 4 |
| 4.1. Power/Screen On/Off Button 【⏻】 | 4 |
| 4.2. Audio Record Button 【🎤】 | 4 |
| 4.3. Video Record Button 【📹】 | 4 |
| 4.4. Photo Button 【📷】 | 4 |
| 4.5. File Protection Button 【⚠️】 | 4 |
| 4.6. Light Button 【💡】 | 4 |
| 4.7. Menu Button/Return Button 【☰】 | 4 |
| 4.8. Up Button/Left Button 【⏮️】 | 4 |
| 4.9. Down Button/Right Button 【⏭️】 | 5 |
| 4.10. Playback/Confirm Button 【OK】 | 5 |
| 4.11. Reset Button 【●】 | 5 |
| 5. Indicator Light | 5 |
| 6. Basic Function Operation | 6 |
| 6.1. Power On/ Power Off | 6 |
| 6.2. Screen Protection / Power Saving Feature | 6 |
| 6.3. System Setting | 7 |
| 6.4. Auxiliary Light Infrared(IR) | 9 |
| 6.5. Take Photos | 9 |
| 6.6. Video Recording | 10 |
| 6.7. Audio Recording | 10 |
| 6.8. Loop Recording | 10 |
| 6.9. Files View / Playback | 11 |
| 6.10. File Deletion | 11 |
| 6.11. Reset | 11 |
| 6.12. Connect to a Computer | 11 |
| 7. Back Clip Install | 12 |
| 8. Product Accessories | 13 |
| 9. Charging of Products | 13 |
| 10. Troubleshooting | 14 |
| 11. Customer Service | 14 |

Preface

Thanks for choosing high-definition professional BOBLOV body camera. This manual specified how to use KJ21 and provides detailed information, including the instructions on use, operation and installation as well as technical specifications. Please read this manual carefully to understand it before use and keep it well for long-term reference.

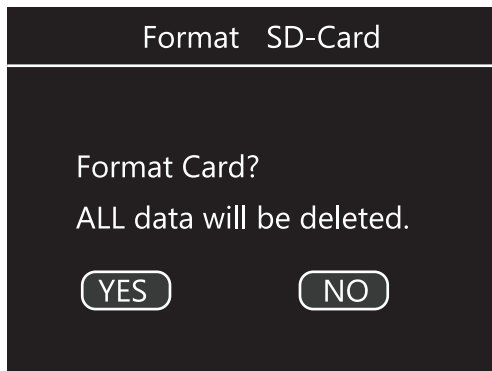
Format the TF Card

This camera can support memory expand max 128G, please insert and format the TF card before you start to use it.

The device is capable of formatting a TF card directly, if you insert a card with incorrect format, the device will remind "Format the card".

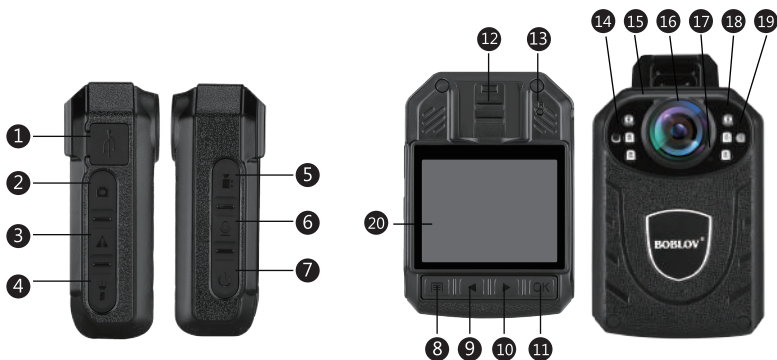
Selecting "Yes" will format the card but delete all data at the same time, and then get the camera work. So, please take out the card directly and save your data well before you select "Yes". It is very important to make sure that the data is saved, Or the files will be deleted.

Selecting "No" will pop up "Format card" page again. It is normal. As long as you formatted the card. Then you can get it start to work



Structure Diagram

3. Structure Diagram



- | | |
|-------------------------------|------------------------|
| 1. USB Interface | 11. OK/Playback Button |
| 2. Photo Button | 12. Loudspeaker |
| 3. File Protection Button | 13. Reset Button |
| 4. Light Button | 14. Sensor |
| 5. Video Recording Button | 15. Indicator Light |
| 6. Audio Recording Button | 16. Lens |
| 7. Power/Screen On/Off Button | 17. Audio Pick Up |
| 8. Menu Button/Return Button | 18. Infrared Light |
| 9. UP Button/Left Button | 19. White Light |
| 10. Down Button/Right Button | 20. Screen |

Button Operation Statement >>>

4.1. Power/Screen On/Off Button 【 ⏻ 】 :Long press the button to boot, when the device is powered on, short press the button to turn screen off/on, or long press to power off the device.

4.2. Audio Record Button 【 🔊 】 :When the device is powered on, short press the button to record a piece of audio, press it again to stop recording and save the audio file.

4.3. Video Record Button 【 📹 】 : When the device is powered on, short press the button to record a video, press it again to stop recording and save the video file.

4.4. Photo Button 【 📷 】 : When the device is powered on, short press the button to take a photo and save.

4.5. File Protection Button 【 ⚠️ 】 :when the device is recording a video, short press the button to mark the video which is being recorded, while a yellow. "⚠️" sign appears on the screen, You can short press the button again to cancel the mark. (Note: the name of a marked video file will end with a yellow. "⚠️" sign in playback page. Also, locked videos will not be covered by loop recording.)

4.6. Light Button 【 💡 】 :When the device is powered on, short press the button to turn on white light, short press it a second time to make white light flash and short press it a third time to turn off white light; When the device is powered on, long press the button to turn on infrared night vision light, and long press the button again to turn off infrared night vision light.

4.7. Menu Button/Return Button 【 🏠 】 :Short press the button to enter or exit menu; on menu or playback page, short press the button to exit.

4.8. Up Button/Left Button 【 ⬅️ 】 :

- (1) On settings menu or playback page, short press the button to move the selection up or left.
- (2) In video playback process, short press the button to fast rewind.
- (3) In photo viewing mode, short press the button to move to the previous photo.

4.9. Down Button/Right Button 【▷】 :

- (1) On settings menu or playback page, short press the button to move the selection down or right.
- (2) In video playback mode, short press the button to fast forward.
- (3) In photo viewing mode, short press the button to move to the next photo.

4.10. Playback/Confirm Button 【OK】 : When the device is powered on, short press the button to enter playback page; On menu or playback page, short press the button to confirm or enter the current selection.

4.11. Reset Button 【●】 : when device crashes or stops due to improper operation or other special reasons, please press the button to reset the device.


Indicator Light

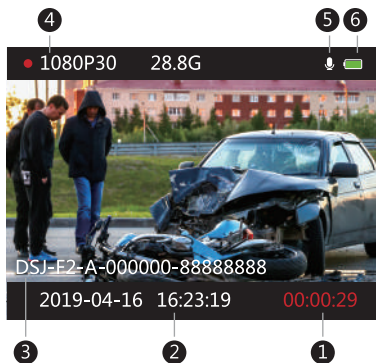
The Status indicator of this device in operation is shown below.

| | Indicator Light 1 | Indicator Light 2 |
|-----------------|---------------------------|-------------------|
| Power On | | Solid with green |
| Video Recording | Keep flashing with red | |
| Charging | | Solid with white |
| Fully Charged | White light goes out | |
| Take Photos | Red light flashes once | |
| Audio Recording | Keep flashing with yellow | |

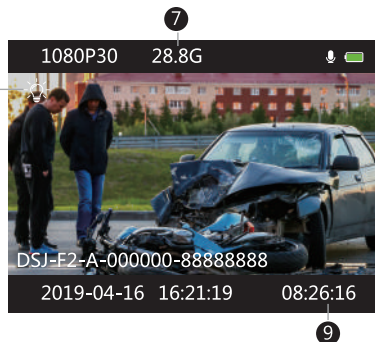
Basic Function Operation

6.1.Power On/ Power Off

Long press the button 【】 to boot, when the device is powered on, short press the button to turn the screen off/on, or long press to power off the device.





Recording Status



Monitoring Status

Screen Statement

(Red 【】 ordinary recording, Blue 【】 pre-recording)

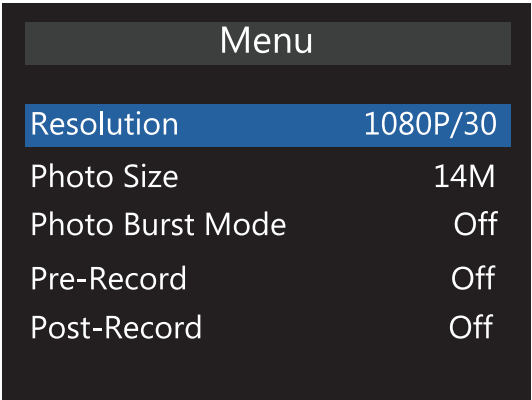
- | | |
|---------------------------|-------------------------------------|
| 1.Recording time | 6.Battery power icon |
| 2.System date and time | 7.Remaining storage for memory card |
| 3.Device ID and police ID | 8.White light icon |
| 4.Recording resolution | 9.Current remaining recording time |
| 5.Video sound icon | |

6.2 Screen Protection / Power Saving Feature

1. Screen protection feature: If there is no operation within 60 seconds (default), the device will turn off screen automatically to protect the screen. (this feature can be set to 30 seconds or off).
2. Power saving feature: If there is no operation within 5 minutes (default), the device will power off automatically to save power. (this feature can be set to 1 minute, 3 minutes or off).

6.3 System Setting

Short press menu button **【 𠄎 】** to enter menu page.



- 1.Short press “Up/Down/OK” to select an option and confirm.
- 2.Short press Menu button **【 𠄎 】** to exit menu page.

| | Parameter choice | Default value |
|------------|--|---------------------|
| Resolution | 2304x1296 30P 16:9 1920x1080 30P 16:9 1280X720 30P 16:9 848X480 30P 16:9 | 1920x1080 30P 16:9 |
| Photo Size | 14M(4352x3264 16:9) 12M(4000x3000 16:9) 8M(3264X2448 16:9) 4M(2048x1536 16:9) | 14M(4352x3264 16:9) |

| | | |
|---------------------|--------------------------------------|-------------|
| Photo Burst Mode | Off/3pcs/5pcs/10pcs | Off |
| Pre-Record | On/Off | Off |
| Post-Record | Off/5sec/30sec/1min/5min | Off |
| Compression Storage | On/Off | Off |
| Exposure | -2~2 | 0 |
| Loop Recording | On/Off | On |
| Video length | 5/10/15/20/30minutes | 30min |
| Motion detection | On/Off | Off |
| LCD Auto Off | Off/30s/60s | 60s |
| Auto power Off | Off/1min/3min/5min | 5min |
| Key Tone | On/Off | On |
| Video Sound | On/Off | On |
| Device volume | High/Medium/low | High |
| Car Dash Cam Mode | On/Off | Off |
| Anti-Virus | On/Off | Off |
| File Review Mode | File mode/Image mode | Image mode |
| Device ID | Verify password can edit new numbers | 8888888 |
| Password | On/Off | On (000000) |
| Change Password | Verify and edit new password | 000000 |
| Stealth mode | On/Off | Off |
| IR Filter | Manual/auto | Manual |
| Audio Broadcast | On/Off | Off |
| Language | English/简体中文/繁体中文 | English |

| | | |
|------------------|---|--|
| Default settings | Restore default value after password verification | |
| Date/Time | Can be edited. | |
| Version | Model+Version+Date | |

(Note: software update may leads to parameter changes. Please take the actual product as the standard.)

6.4 Auxiliary light Infrared(IR)

Night vision light:

When the device is powered on, long press the **【☾】** button to turn on infrared night vision light, and long press the button again to turn off infrared night vision light. This function can be set to auto.

When the device is powered on, short press the button to turn on white light, short press it a second time, white light will keep flashing and short press it a third time to turn off white light.

6.5 Take photos:

1. Single shot: When the device is powered on, short press the **【📷】** button once, red light flashes once, and take one photo, photo files are named after the date and time, saved in JPG format.
2. Multiple shots: If you set Photo Burst Mode to 3P/5P/10P, when the device is powered on, short press the **【📷】** button once, red light flashes once, and take 3/5/10 photos, photo files are named after the date and time, saved in JPG format.
3. Snapshot: During video recording, short press the **【📷】** button to take one photo, photo files are named after the date and time, saved in JPG format(Multiple shots is available too).

6.6 Video Recording

1. When the device is powered on, short press the **【📹】** button to record a video, during this process, there is a red dot in the screen, press it again to stop recording and save, video files are named after the date and time, saved in MP4 format
2. Motion Detection: if you enable motion detection feature, the device will enter a 7-second countdown, and start recording if detected a moving object; if there is not a moving object detected, the device will stop recording in 10 seconds.
3. Pre-Record: If you enable Pre-record and long press photo key.(**【📷】**), the device will start to pre-record, while a blue flashing dot is displayed on the screen. This feature allows you to record extra one-minute video before recording start.
4. Post-Record: If you set Post-Record to 5s / 30s / 1minute / 5minutes, the device will record extra 5s / 30s / 1minute / 5minutes video after recording stop.
5. Video Sound: If you set Video Sound to OFF, the device will record videos without sound.
6. Stealth Mode: If you set Stealth mode to ON, the device will disable all sound and light of the device in video recording, audio recording and photographing.
7. Car Dash Cam Mode: If you set Car Dash Cam Mode to ON, the device will start recording automatically when connected to an USB power supply.

6.7 Audio Recording

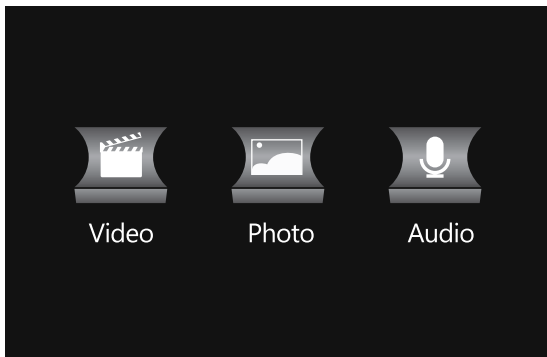
1. This device is able to record audio independently, when the device is powered on, short press **【🎤】** to record a piece of audio, press it again to stop recording and save, audio files are named after the date and time, saved in MP3 format.

6.8 Loop Recording

If you enable loop recording feature, when storage is full, the device will keep recording by covering old data .(Note: this action will not cover videos which are in protection, see 2.5.)

6.9 Files view / Playback

When the device is powered on, short press **【OK】** to enter Files view / Playback page, short press **【OK】** to view or play files, or short press Menu Button/Return Button **【☰】** to exit **Files view / Playback** page.

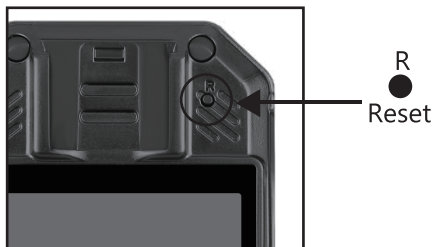


6.10 File Deletion

You are not able to delete any file with the device itself. You are only able to delete files by connecting to a computer.

6.11 Reset

When the device crashes or stops due to improper operation or other special reasons, please press the button to reset the device.



6.12 Connect to Computer

Connect to the computer by the USB cable attached, enter the password: (default is 000000), enter USB flash disk mode.

Back Clip Install



Back clip Installation as the pictures shown.



Attention: In order to avoid repeated assembly damage, please do not disassemble clips frequently

Product Accessories >>>

- 1* USB Connecting Cable
- 1* Charging Plug
- 1* Small Back Clip
- 1* Big Back Clip
- 1* Manual Guide

Charging of Products >>>

Low-power display: when the battery is too low, the power icon in the upper right of the display will flash, the device also issues a prompt sound every 10 seconds, and will automatically shut down in several minutes, please charge the device in time to avoid damage to battery.

Note: Please use the original USB cable and charging plug to avoid potential damage to the device.

Troubleshooting

⚠ The device is unable to boot and buttons do not work.

1. Please connect the device to a power supply and press the power button to see if it can be powered on.
2. Charge the device for 2 hours and see if it can solve the problem.
3. Please check if the charger and connection cable are normal.
4. Please reset the device by pressing reset button and check whether the problem is solved.
5. If the problem can not be solved, please contact the seller or BOBLOV after sales team:

⚠ Forgot password

The default password is 000000, you can set it manually, if you forget your new password, please e-mail us: support @boblov.com

Customer Service

BOBLOV is dedicated to offer the best service

To reach BOBLOV customer service, please e-mail us:

Support@boblov.com

Official Website: www.boblov.com

Facebook: www.facebook.com/BOBLOVGlobal/



 **BOBLOV**