



Affordable. Reliable. Home Improvement.

BENCH GRINDER PEDESTAL

MODEL:GS-E

Technical Support and E-Warranty Certificate
www.vevor.com/support

VEVOR

Affordable. Reliable. Home Improvement.

BENCH GRINDER PEDESTAL

MODEL: GS-E



This is the original instruction, please read all manual instructions carefully before operating. VEVOR reserves a clear interpretation of our user manual. The appearance of the product shall be subject to the product you received. Please forgive us that we won't inform you again if there are any technology or software updates on our product.



Warning-To reduce the risk of injury, user must read instructions manual carefully.

INSTRUCTIONS

Thank you for purchasing a VEVOR product. Manufactured to a high standard, this product will, if used according to these instructions, and properly maintained, give you years of trouble free performance.



Read the instruction manual.

IMPORTANT: please read these instructions carefully. note the safe operational requirements, warnings & cautions. use the product correctly and with care for the purpose for which it is intended. failure to do so may cause damage and/or personal injury and will invalidate the warranty. keep these instructions safe for future use.

1. Only use on firm, level, unobstructed surfaces which are capable of supporting the bench grinder floor stand and bench grinder.
2. Ensure bench grinder floor stand is fixed to surface capable of supporting stand, bench grinder and work piece.
3. Always use bench grinder floor stand in a well lit clean and dry place.

Make sure surface is firm under foot. preferably concrete.

4. Enlist help to place and remove the bench grinder from its working position.
5. Replace or repair damaged parts. Use only recommended parts. Unauthorised parts may be dangerous and will invalidate the warranty.
6. Keep bench grinder floor stand dry.
7. Keep children and unauthorised persons away from the work area.

Ensure that the unit is properly and securely assembled before use.

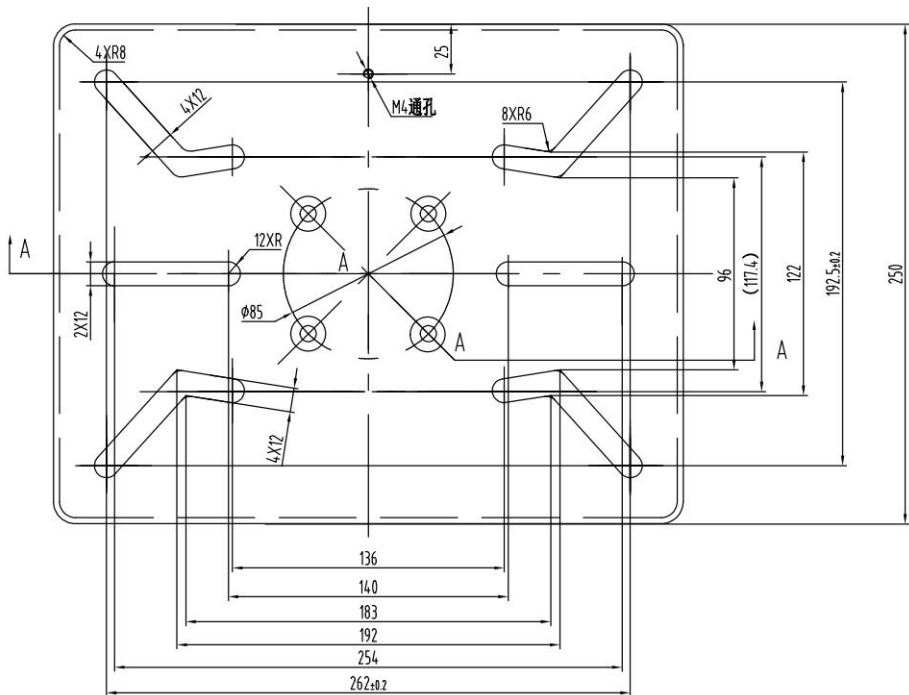
WARNING! Failure to comply with these instructions may result in damage to the stand or other property and/or personal injury.

WARNING! The warnings, cautions and instructions discussed in this instruction manual cannot cover all possible conditions and situations that may occur. It must be understood that common sense and caution are factors which cannot be built into this product, but must be applied by the operator.

INTRODUCTION

Sturdy bench grinder stand with floor mounting holes for added security.
Heavy-duty cast iron base. Adjustable heights from 700mm to 900mm, a total of five gears can be adjusted. Features accessory tray and two compartments for the storage of grinding wheels. Power cable hook for safe storage of grinder power cords. Compatible with the VOVER range of bench grinders, and also suitable for other leading brands of bench grinders.

NOTE: Dimensions of the mesa mounting holes, Consumers can choose the appropriate fixing hole position according to the installation size of the fixed machine base.



ASSEMBLY

Numbers refer to attached parts list.

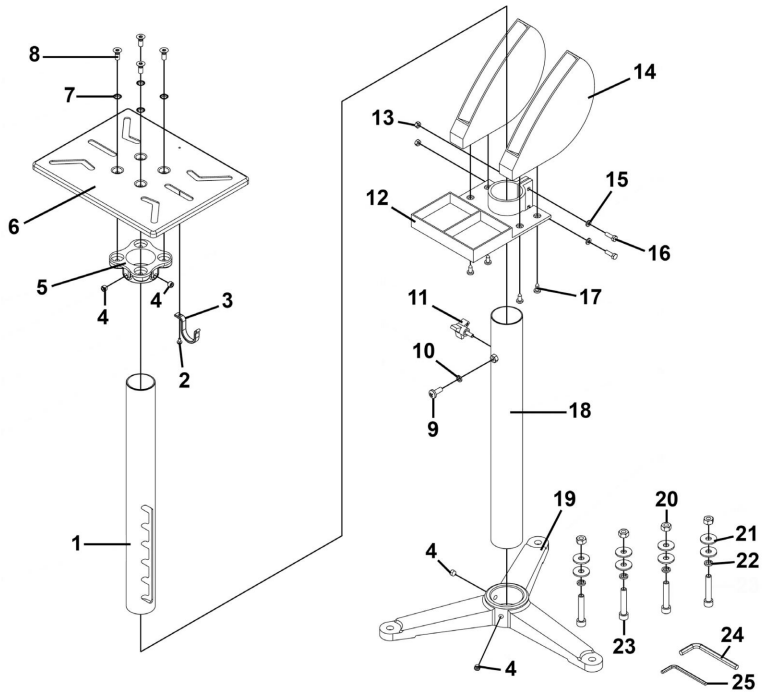


FIG.1

Before you begin, separate all parts and group by size and style. If any parts are missing, contact your VEVOR stockist immediately.

NOTE: finger tighten nuts and bolts when assembling. Once assembled, use an adjustable wrench to ensure all fixings are secure.

WARNING! This stand must be installed on solid level ground and in combination with compatible bench grinders.

4.1. ASSEMBLING THE STAND (FIG.1)

4.1.1. Slide upright (18) into base (19) use grub screws M10 x 10 (4) to secure.

4.1.2. Attach grinding wheel storage compartment (14) to accessory tray (12) using self-tapping screws ST6,3 x 16 (17). Slide completed unit over upright (18). Use flat M6 zinc washer (15), hex head set screws M6 x 20 zinc (16), and steel nuts M6 zinc (13) to attach.

4.1.3. ASSEMBLING THE TOP TRAY

4.1.4. Assemble top tray holding bracket (5) to top tray (6) using retaining washers (7) and countersunk Phillips machine screw M8 x 20 zinc

(8). Slide unit over movable bracket arm (1) and secure using grub screws M10 x 10 (4).

4.1.5. Attach storage hook (3) to top tray (6) using machine screw pan head Phillips M4 x 8mm (2).

4.1.6. Slide the completed table assembly onto the upright (18) secure using knob, adjustable threaded (11) and spring washer M8 zinc (10) and machine screw pan head Phillips M8 x 20mm (single) (9).

4.2. SECURING A GRINDER

4.2.1. Make sure bench grinder stand is bolted down securely to the floor before installing bench grinder to the top.

WARNING! To avoid injury, turn the grinder switch OFF and unplug from the power source before mounting onto the stand.

4.2.2. Mount grinder onto the grinder floor stand. See (fig.2).



FIG.2

Bench grinder not included



ENVIRONMENT PROTECTION

Recycle unwanted materials instead of disposing of them as waste. All tools, accessories and packaging should be sorted, taken to a recycling centre and disposed of in a manner which is compatible with the environment. When the product becomes completely unserviceable and requires disposal, drain any fluids (if applicable) into approved

containers and dispose of the product and fluids according to local regulations.

Note: It is our policy to continually improve products and as such we reserve the right to alter data, specifications and component parts without prior notice.

Important: No Liability is accepted for incorrect use of this product.

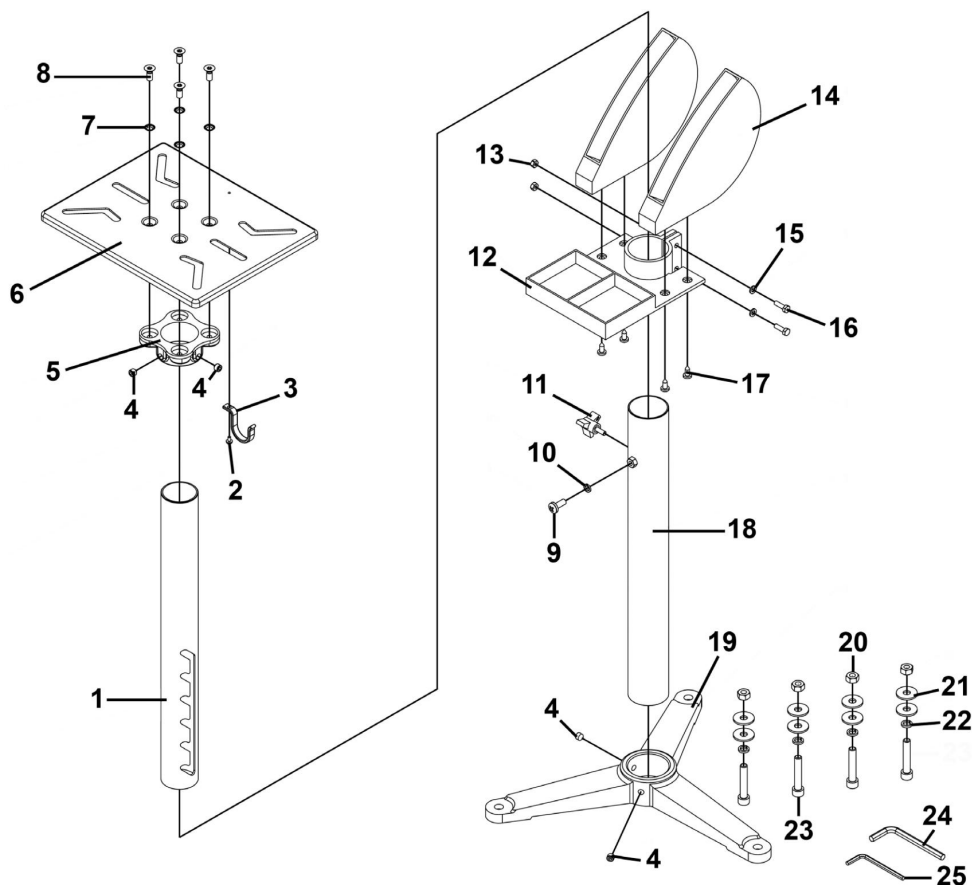
CARE & MAINTENANCE

1. Maintain the tool with care. A tool in good condition is efficient, easier to control and will have fewer problems.
2. Inspect the tool components periodically. Repair or replace damaged or worn components. Only use identical replacement parts when servicing.
3. Maintain the tool's labels and name plates. These carry important information. If unreadable or missing, contact Princess Auto Ltd.

for replacements.

WARNING! Only qualified service personnel should repair the tool. An improperly repaired tool may present a hazard to the user and/or others.

BREAKDOWN AND PARTS



Item	part No.	Description	Qty
1	BGST1 - 01	Movable Bracket Arm	1
2	MSP48.S	Machine screw pan Head phillips M4 X 8mm	1
3	BGST1 - 03	storage Hook	1
4	GSM1010 .S	Grub screw M10 X 10	4
5	BGST1 - 05	TOP Tray Holding Bracket	1
6	BGST1 - 06	TOP Tray	1

7	BGST1 - 07	Retaining washer	4
8	MSC820 .S	csk phillips Machine screw M8x20 zinc	4
9	MSP820 .S	Machine screw pan Head phillips M8x20mm (single)	1
10	SWM8.S	spring washer M8zinc	1
11	BGST1 -11	knob, Adjustable Threaded	1
12	BGST1 -12	Accessory Tray	1
13	SN6 .S	steel Nut M6 zinc	2
14	BGST1 -14	Grinding wheel storage compartment	2
15	FWM6 .S	Flat washer M6 zinc	2
16	SS620 .S	Hex Head set screw M6 X 20 zinc	2
17	BGST1 -17	self-Tapping screw ST6 . 3 x 16	4
18	BGST1 -18	upright	1
19	BGST1 -19	Base	1
20	SN10 .S	steel Nut M10 zinc	4
21	FWM10 . S	Flat washer M10 zinc	8
22	SWM10 .S	spring washer M10 zinc	4
23	SCB1055 .S	socket cap Bolt M10 x 55mm	4
24	BGST1 -24	Hex key8mm	1
25	BGST1 -25	Hex key 5mm	1

SPECIFICATIONS

Model	GS-E
Color	Black
Adjustable height	700-900mm
The steel table size	315*254mm
Applicable size of grinding machines:	125-250mm
Other functions	A tank for the grinding wheel , A water tank.
Net weight	7.45kg

Manufacturer: Shanghaimuxinmuyeyouxiangongsi

Address: Shuangchenglu 803nong11hao1602A-1609shi, baoshanqu, shanghai 200000 CN.

Imported to AUS: SIHAO PTY LTD. 1 ROKEVA STREETEASTWOOD NSW 2122 Australia

Imported to USA: Sanven Technology Ltd. Suite 250, 9166 Anaheim Place, Rancho Cucamonga, CA 91730

UK	REP
-----------	------------

YH CONSULTING LIMITED. C/O YH Consulting
Limited Office 147, Centurion House, London
Road, Staines-upon-Thames, Surrey, TW18 4AX

EC	REP
-----------	------------

E-CrossStu GmbH
Mainzer Landstr.69,
60329 Frankfurt am Main.



Technical Support and E-Warranty Certificate
www.vevor.com/support