



RACPWS8



IMPORTANT!

It is essential that you read the instructions in this manual before assembling, operating, and maintaining the product.

Subject to technical modification.

Safety, performance, and dependability have been given top priority in the design of your electric high pressure cleaner.

INTENDED USE

The electric high pressure cleaner is intended to clean machines, vehicles, buildings, floors, tools, facades, terraces, and concrete walkways by removal of stubborn dirt using clean water with or without cleaning detergent.

The product is designed for home or domestic use. The product is intended only for outdoor use in well-illuminated conditions.

For safety reasons, the product must be adequately controlled by using a two-handed operation at all times.

Do not use the product for any other purpose.

⚠ WARNING! The product is designed for use with a neutral cleaning agent supplied or recommended by the manufacturer. The use of other cleaning agents or chemicals may adversely affect the safety of the product.

NOTE: If using a detergent, refer to the Material Safety Data Sheet of the detergent.

GENERAL SAFETY WARNINGS

⚠ WARNING! Read all safety warnings and all instructions. Failure to follow the warnings and instructions may result in electric shock, fire, and/or serious injury. Save all warnings and instructions for future reference.

- The product is not intended to be used by children or persons with reduced physical, sensory, or mental capabilities or with lack of experience and knowledge. Children should be adequately supervised to ensure that they do not play with the product.
- Wear complete personal protective equipment when operating the product, such as boots, safety gloves, safety helmets with visor, and hearing protection. Use high-impact visors only with liquid splash protection.

⚠ WARNING! Do not use the product when people are within range unless they are wearing protective clothing.

- To reduce the risk of injury, keep children and bystanders away. All bystanders should wear safety glasses and be kept at a safe distance from the work area.
- Ensure that the safety devices are in good working condition. Make sure that all safety devices are operating properly before each use.
- Do not use the product if the power cord or other important parts, such as safety devices, high-pressure hoses, or trigger gun, are damaged.
- Exercise caution when opening the trigger. Hold the trigger handle firmly with two hands to avoid injury when the trigger handle kicks back.
- The pressure washer output is powerful and can potentially damage surfaces. Always check the condition of the paintwork before using the product on the painted surface.

⚠ WARNING! During the use of high pressure cleaners, aerosols may be formed. Inhalation of aerosols can be hazardous to health. Depending on the application, shielded nozzles can be used for high pressure cleaning, which reduces the emission of hydrous aerosols. However, not all applications allow the use of shielded nozzles. If shielded nozzles are not applicable for the protection against aerosols, a respiratory mask of class FFP 2 or equivalent may be needed, depending on the cleaning environment.

- Never leave the product unattended. Power off the product, and disconnect it from the power supply. Do not leave the product until it has come to a complete stop.
- **⚠ WARNING!** High-pressure jet is dangerous if misused. Do not direct the jet to people, live electrical equipment, or the product itself.
- To avoid a risk of explosion, do not spray flammable liquids.
- Do not direct the jet against yourself or others to clean clothes or footwear.
- Do not use the product to clean electronic devices, clothes, or footwear.
- High pressure hoses, fittings, and couplings are important for the safety of the product. Use only hoses, fittings, and couplings that are recommended by the manufacturer.

- Injuries may be caused, or aggravated, by prolonged use of the product. When using the product for prolonged periods, ensure to take regular breaks.

⚠ CAUTION! The product must not be used on a drinking water supply without a backflow preventer that corresponds to EN 12729 Type BA. Water that has flowed through a backflow preventer is considered non-drinkable. Always observe the regulations of your local water utility company when connecting the product to a water supply line. Do not connect the product to the public drinking water network.

ELECTRICAL SAFETY WARNINGS

- Power plugs must match the outlet. Never modify the plug in any way. Unmodified plugs and matching outlets reduce the risk of electric shock.
- Do not use the product if the power cord or other important parts, such as safety devices, high-pressure hoses, or trigger gun, are damaged.
- Before every use, examine the power cord for damage. If the power cord is damaged, it must be replaced by a qualified person at an authorized service centre to avoid a hazard.
- Keep the power cord away from heat, oil, and sharp edges.
- Never touch the mains plug and the socket with wet hands.
- Inadequate extension cords can be dangerous. If an extension cord is used, it shall be suitable for outdoor use, and the connection has to be kept dry and off the ground. Use a cord wheel to keep the socket at least 60 mm above the ground.
- Check the extension cord before every use for damage. Always uncoil cords during use because coiled cords can overheat. Damaged extension cords should not be repaired, they should be replaced with an equivalent type.
- The electric supply connection shall be made by a qualified electrician and comply with IEC 60364-1. It is recommended that the electric supply to this product should include either a residual current device that will interrupt the supply if the leakage current to earth exceeds 30 mA for 30 ms or a device that will prove the earth circuit.

ADDITIONAL SAFETY WARNINGS

- Some regions have regulations that restrict the use of the product to some operations. Check with your local authority for advice.
- Do not use the product on any material with asbestos.
- Before each use, check the product for damage. A damaged high-pressure hose must be replaced immediately. Ensure that all connections, such as high-pressure hose and nozzle, are secure. Unwind the hose properly so that they may not get twisted or kinked.
- Do not allow children or untrained individuals to use the product.
- Before starting any cleaning operation, close doors and windows. Clear the area to be cleaned of debris, toys, outdoor furniture, or other objects that could create a hazard.
- Do not use the product in temperatures below 0 °C.
- Do not use acids, alkalines, solvents, flammable materials, bleaches, or industrial grade solutions in the product. These products can cause physical injuries to the operator and irreversible damage to the product.
- Hold the trigger handle securely with both hands. Expect the trigger handle to move when the trigger is pulled due to reaction forces. Failure to do so could cause loss of control and injury to yourself and others.
- Make sure that the air in the hose and pump is released before you power on the product. To remove the air in the hose and pump, connect the water supply to the pump using a garden hose, connect the trigger handle to the pump using the high-pressure hose, disengage the trigger handle lock, and press the trigger until there is a steady flow.
- Exercise caution to avoid slipping or falling.
- Keep firm footing and balance at all times. Do not overreach. Overreaching can result in loss of balance and can result in serious injury.
- Use only accessories that are recommended by the manufacturer. The use of improper accessories may cause injury.
- Never leave the product running unattended. Power off the product. Do not leave the product until it has come to a complete stop.

- Be familiar with the controls and the proper use of the product. Know how to power off the product and bleed the pressure quickly.
- Stay alert, and exercise control. Watch what you are doing, and use common sense.
- Do not use the product if the switch does not power it on and off. Any product that cannot be controlled with a switch is dangerous and must be repaired.
- Keep a minimum distance of 30 cm when cleaning vehicles. The high-pressure jet may cause damage or burst vehicle tires or tire valves.
- Use a garden hose with a maximum length of 12 m and minimum diameter of 15 mm.
- Before each use, ensure that the accessory is securely attached to the trigger gun.

OVERLOAD PROTECTION

The product has an overload protection device that is activated when overheating or when a current spike occurs, automatically shutting down power within the product. To resume operation, disconnect the product from the power supply, wait for about 15 minutes, and reconnect the product to the power supply.

TRANSPORTATION AND STORAGE

⚠ CAUTION! Mind the weight of the product when selecting the storage location and during transportation to prevent accidents or injuries.

- Power off the product, disconnect it from the power supply, and allow the product to cool down. Disconnect the product from the water supply before storing or transporting. Never place the product in any position other than upright.
- Remove all foreign materials from the product. Store the product in a cool, dry, and well-ventilated place that is inaccessible to children. Keep the product away from corrosive agents, such as garden chemicals and de-icing salts. Do not store the product outdoors.
- Remove water from all hoses and the pump before storing the product.
- When transporting the product in a vehicle, secure it against movement or falling to prevent injury to persons or damage to the product.

- Store the product indoors only. Storing the product in an area with temperature below 0 °C will damage the product.

MAINTENANCE

- Use only original manufacturer's replacement parts, accessories, and attachments. Failure to do so can cause possible injury, can contribute to poor performance, and may void your warranty.
- Power off the product, disconnect it from the power supply, and allow it to cool down. Disconnect the product from the water supply. Make sure that all components have come to a complete stop:
 - before servicing
 - before clearing a blockage
 - before checking, cleaning, or working on the product
- You may make adjustments and repairs that are described in this manual. For other repairs, contact customer service.
- Regularly inspect and maintain the product for safe operation. RYOBI recommends inspecting the product every 6 months.
- Check all nuts, bolts, and screws before each use and at frequent intervals for proper tightness to ensure that the product is in safe working condition. For any sign of damage, contact customer service.

SAFETY DEVICES

- On/Off switch
 - The on/off switch prevents unintentional operation of the product.
- Trigger handle lock
 - The trigger handle lock locks the trigger and prevents unintentional opening of the high-pressure jet.
- Overflow valve with pressure switch
 - The overflow valve prevents the permissible working pressure from being exceeded. If the lever on the trigger gun is released, the pressure switch powers off the pump and the high-pressure jet stops. If the lever is pulled, the pump powers on again.
- Overload protection
 - A thermal sensor protects the product from overloading. The product will automatically shut the power down while overheating.

SYMBOLS ON THE PRODUCT



Safety alert



Read and understand all instructions before operating the product. Follow all warnings and safety instructions.



Never point the gun to persons, animals, the product, the power supply, or any electric appliance.



The product is not suitable for connection to the drinking water supply without a backflow preventer.



Class II: Protection against electric shock rely on double insulation or reinforced insulation.



Regulatory Compliance Mark (RCM). Product meets applicable regulatory requirements.



Waste electrical products should not be disposed of with household waste. Please recycle where facilities exist. Check with your local authority or retailer for recycling advice.



Guaranteed sound power level

SYMBOLS IN THIS MANUAL



Warning



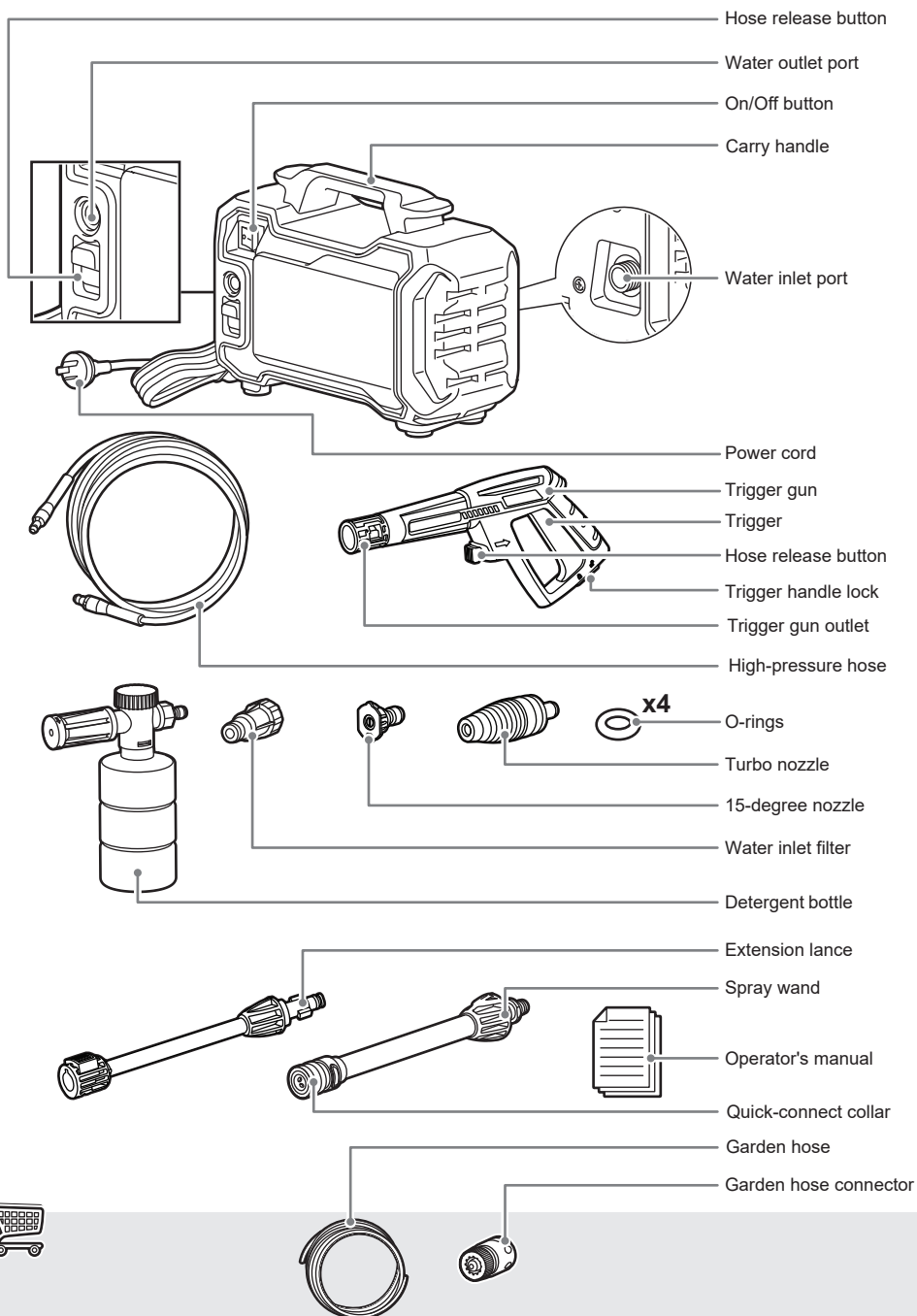
Note

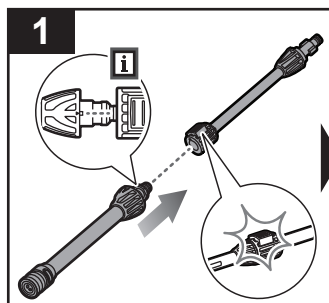


Parts or accessories sold separately



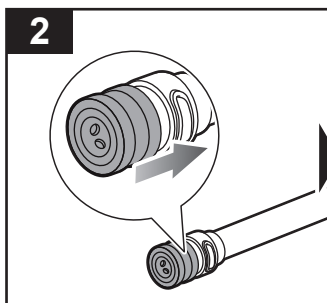
RACPWS8



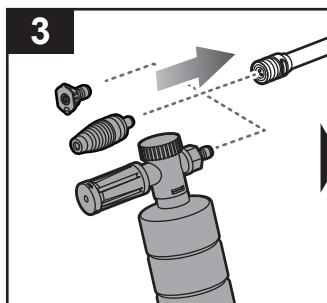


Insert the spray wand into the extension lance until it clicks into place.

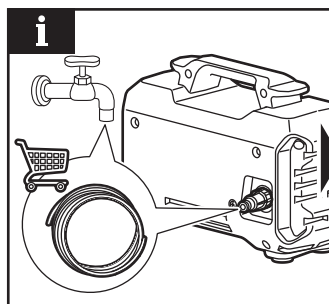
NOTE: Properly align the spray wand with the extension lance.



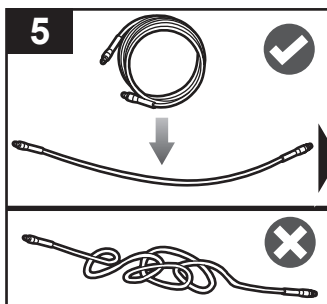
Pull back the quick-connect collar.



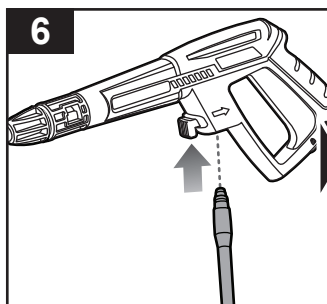
Insert the preferred nozzle into the quick-connect collar until it clicks into place.



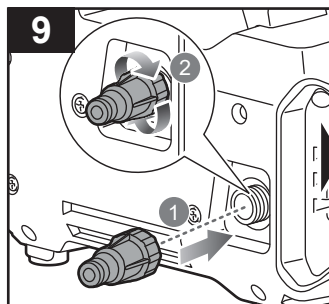
NOTE: Use the garden hose to connect the product to the water source.



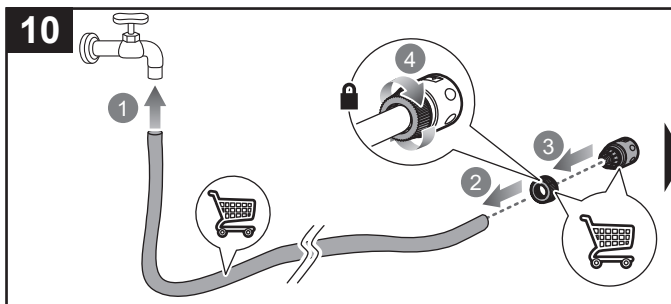
Uncoil the high-pressure hose.



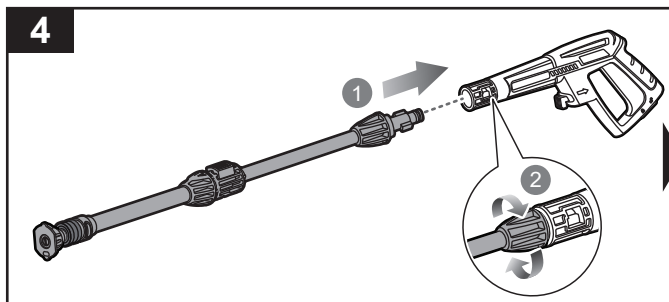
Insert one end of the high-pressure hose into the trigger gun.



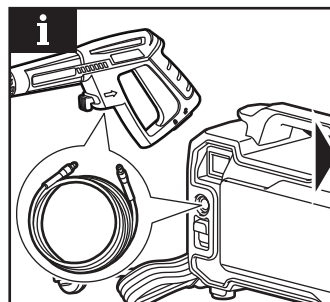
Connect and turn the water inlet filter clockwise to secure it to the water inlet port. Avoid cross-threading the filter and port to avoid water leaks.



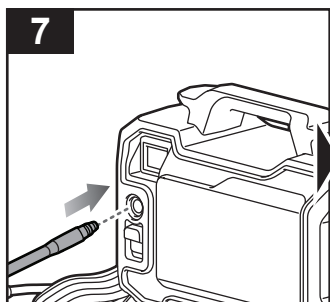
Connect one end of the garden hose to the water source. Install and secure the garden hose connector on the other end of the garden hose.



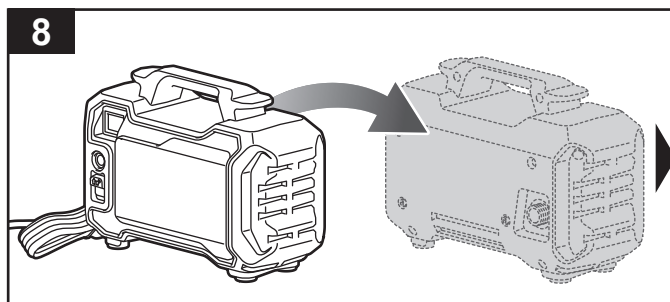
Insert the extension lance into the trigger gun outlet, and turn it clockwise to secure the connection.



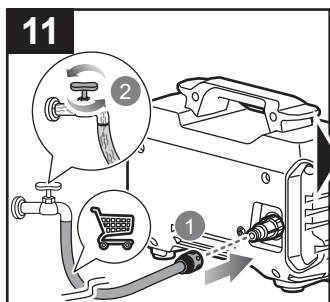
NOTE: Use the high-pressure hose to connect the product to the trigger gun.



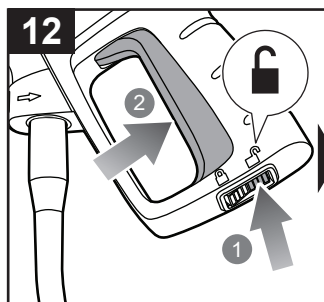
Insert the other end of the hose into the water outlet port.



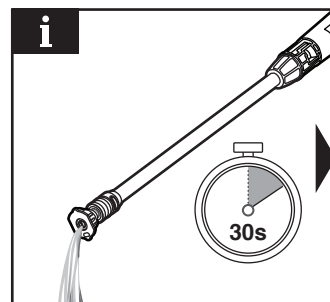
Rotate the product to face its rear side.



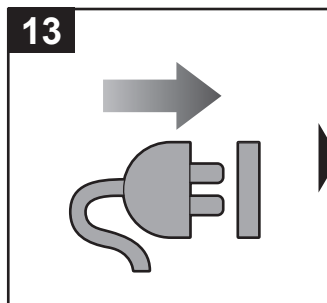
Insert the garden hose connector into the water inlet filter. Turn on the water source to allow water to flow into the product.



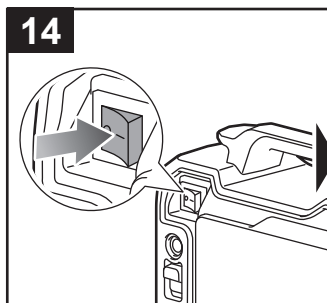
Set the trigger handle lock to the unlock position. Squeeze the trigger to release the existing air pressure within the product.



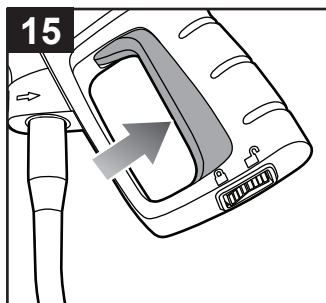
NOTE: Continue to squeeze the trigger until water flows normally. Always remove the existing air pressure within the product before operation.



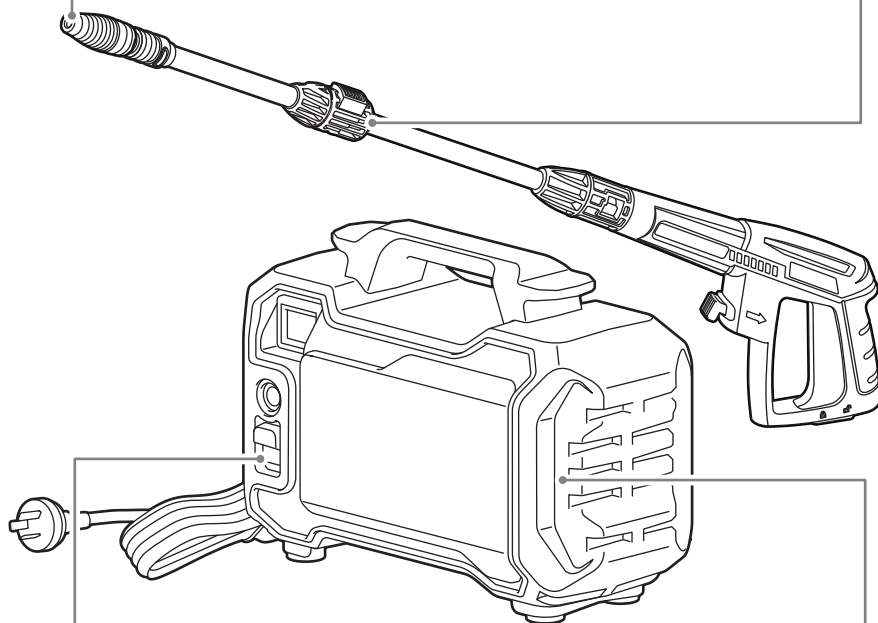
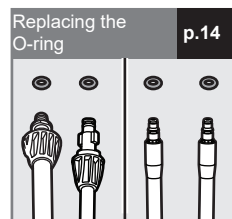
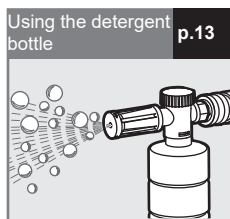
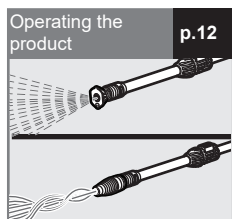
Connect the product to a power outlet.

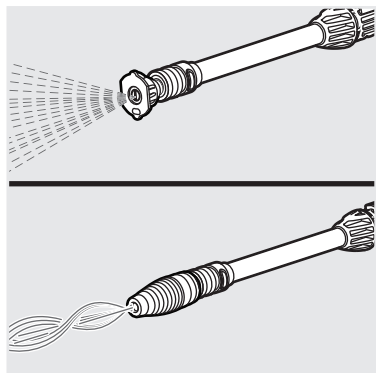


Press the on button to power on the product.



Squeeze the trigger to operate the product.



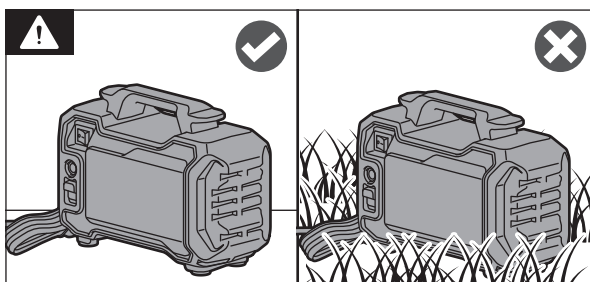
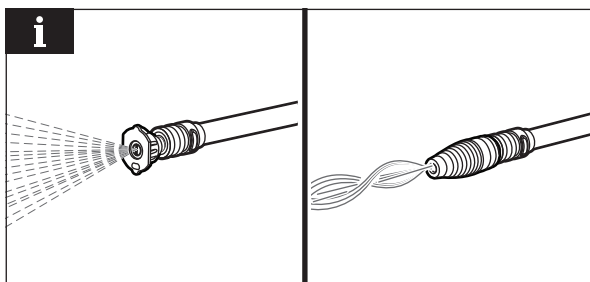
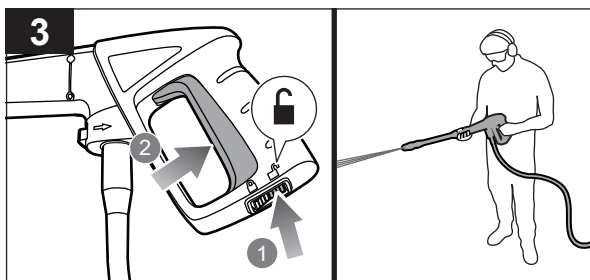
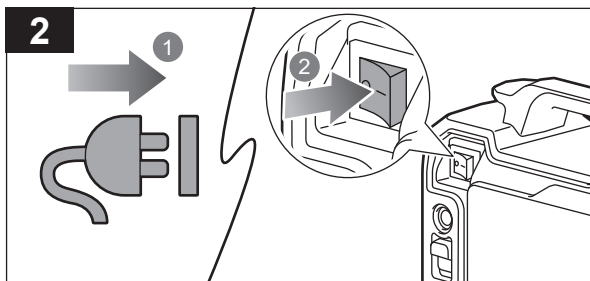
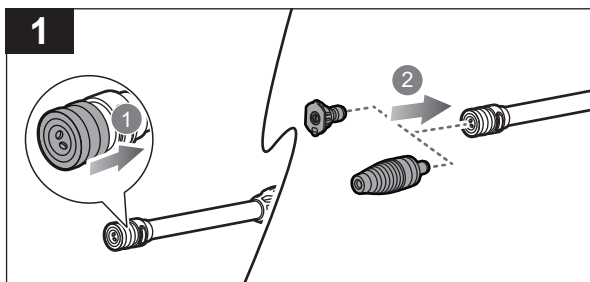


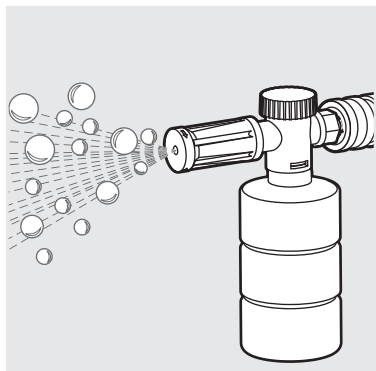
OPERATING THE PRODUCT

1. Pull back the quick-connect collar and insert the preferred nozzle.
2. Connect the product to a power source. Press the on button to power on the product.
3. Set the trigger handle lock to the unlock position. Squeeze the trigger to operate the product.

NOTE: Use the 15-degree nozzle for a wider spray pattern. Use the turbo nozzle for a focused stream.

WARNING: Check the work area before each use. Remove all objects, such as rocks, broken glass, nails, wire, or string, which can be thrown or become entangled in the product.

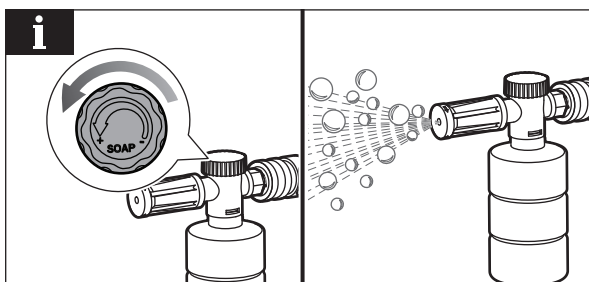
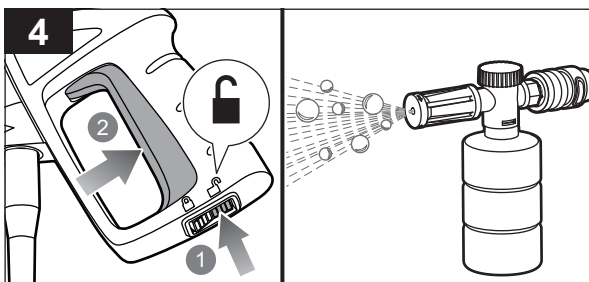
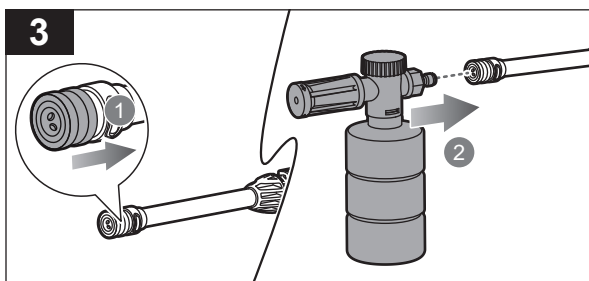
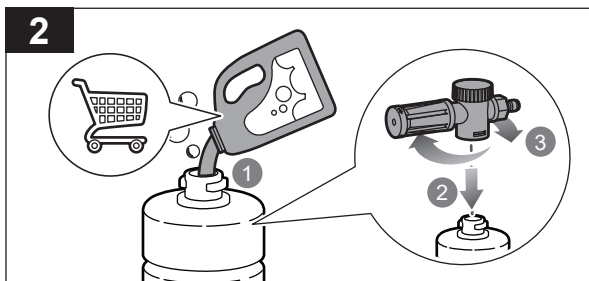
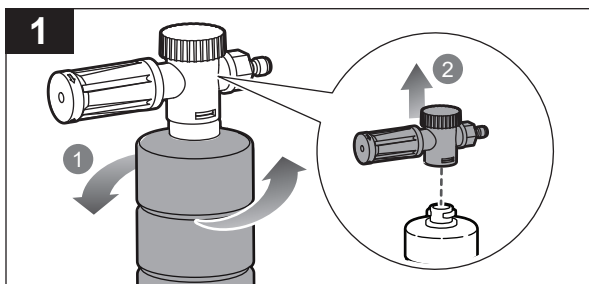


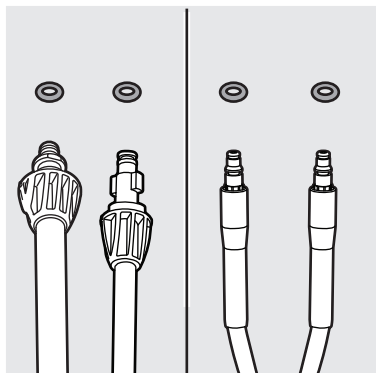


USING THE DETERGENT BOTTLE

1. Turn the detergent bottle in a counterclockwise direction, and pull out the detergent nozzle head.
2. Fill the bottle with detergent solution. Reinstall the detergent nozzle head to the bottle.
3. Pull back the quick-connect collar. Push the detergent nozzle into the quick-connect collar until it clicks into place.
4. Set the trigger handle lock to the unlock position. Squeeze the trigger to operate the product.

NOTE: Turn the knob of the detergent bottle clockwise to increase or decrease the amount of the detergent.





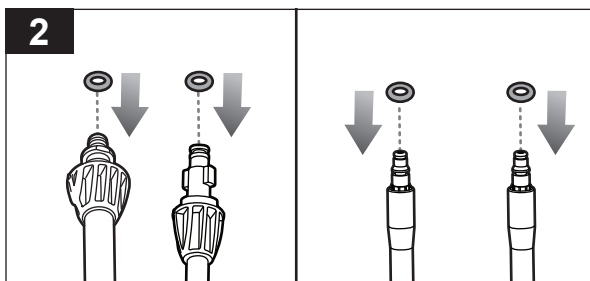
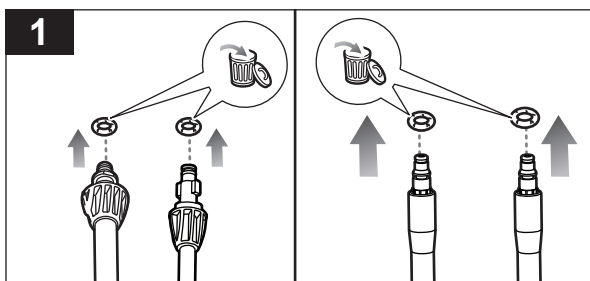
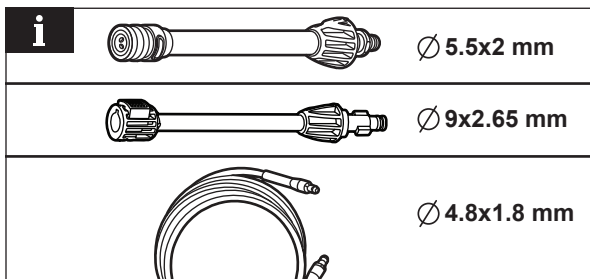
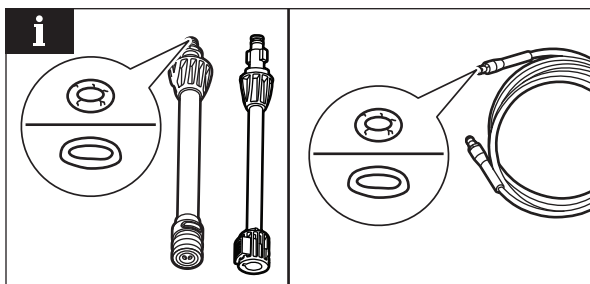
REPLACING THE O-RING

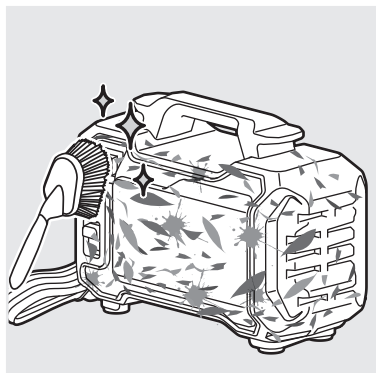
NOTE: Check the lance or hose end for stretched, cracked, or split O-ring.

NOTE: Replace damaged O-rings with the appropriate size. O-ring dimensions are as follows:

- Spray wand – 5.5 x 2 mm
- Extension lance – 9 x 2.65 mm
- Garden hose – 4.8 x 1.8 mm

1. Remove any damaged or cracked O-rings from the lance or hose end. Dispose of the damaged O-ring properly. Contact your local distributor for the suitable replacement O-ring.
2. Insert the O-ring into the intended groove of the lance or hose end.

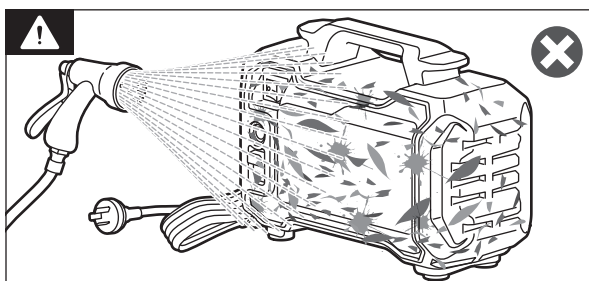
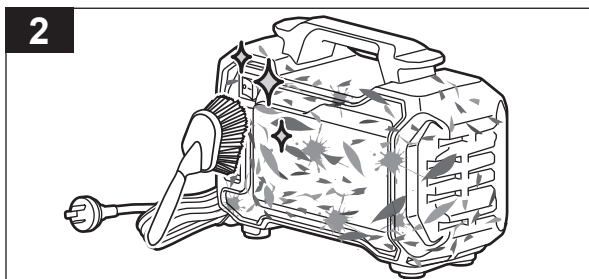
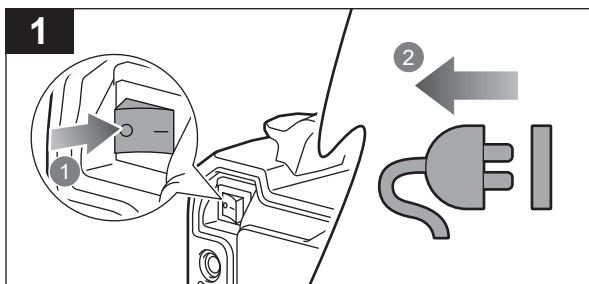


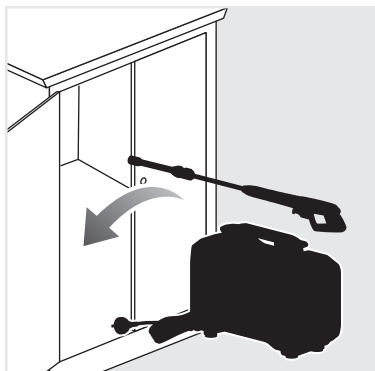


CLEANING THE PRODUCT

1. Power off the product. Disconnect the product from the power outlet.
2. Clean the product using a brush.

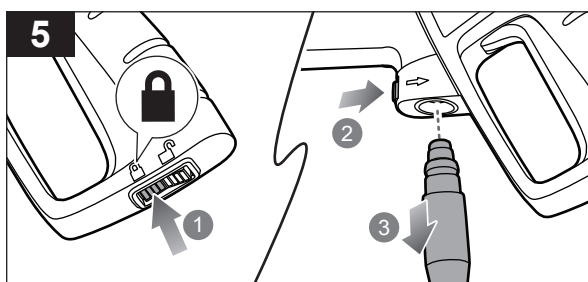
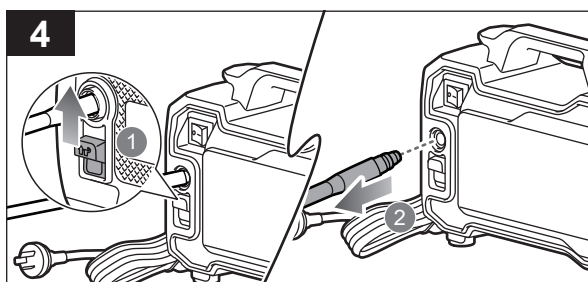
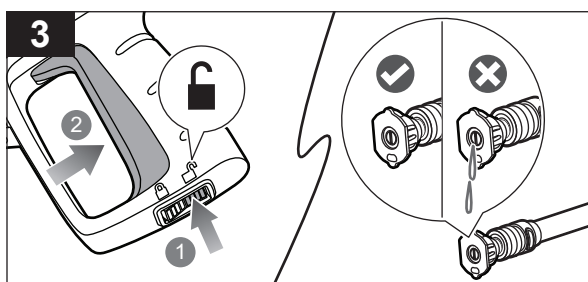
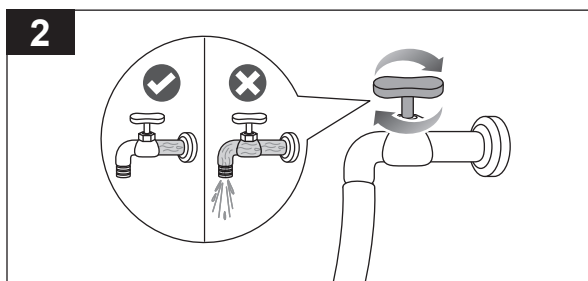
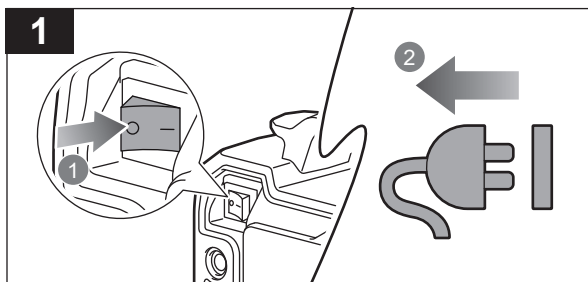
WARNING: Avoid using solvents when cleaning plastic parts. Most plastics are susceptible to damage from various types of commercial solvents. Use clean cloths to remove dirt, dust, oil, grease, etc.



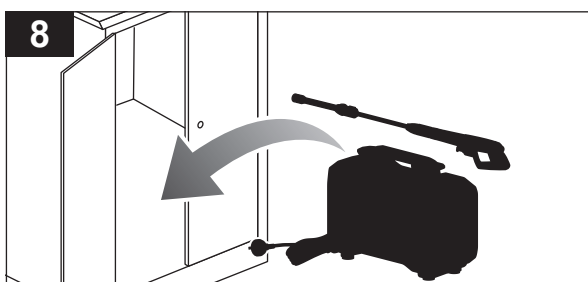
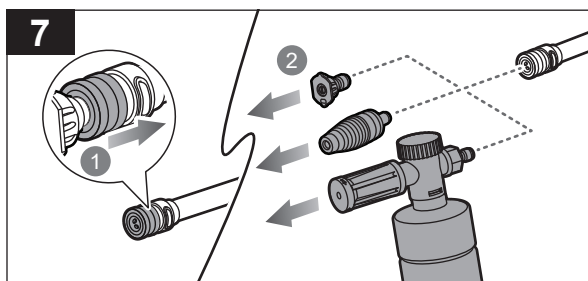
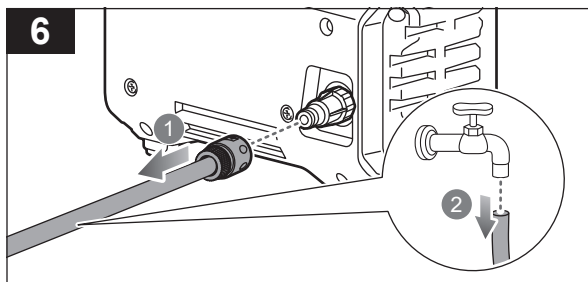


STORING THE PRODUCT

1. Power off the product. Disconnect the product from the power outlet.
2. Turn off the water supply.
3. Set the trigger handle lock to the unlock position. Squeeze the trigger until no more water flows out of the product.
4. Push the hose release button upwards, and disconnect the hose.
5. Set the trigger handle lock to the lock position. Push the hose release button, and disconnect the hose.



6. Disconnect the garden hose from the water inlet port and garden tap.
7. Pull back the quick-connect collar and disconnect the nozzle.
8. Store the product in a cool, dry, and well-ventilated place that is inaccessible to children. Keep the product away from corrosive agents, such as garden chemicals and de-icing salts. Do not store the product outdoors.



PRODUCT SPECIFICATIONS

Electric high pressure cleaner

Model	RACPWS8
Rated voltage	220–240 V a.c.
Frequency	50 Hz
Power	1200 W
Weight	5.6 kg
Maximum pressure	10 MPa (100 bar, 1450 psi)
Rated pressure	7 MPa (70 bar, 1015 psi)
Degree of protection	IPX5
Rated flow	5.5 L/min
Maximum flow	6.5 L/min
Maximum inlet water pressure	1.2 MPa
Power cord length	5 m

Vibration level (in accordance with EN 60335-2-79)

Vibration value	$a_h = 2.1 \text{ ms}^{-2}$
-----------------	-----------------------------

Noise emission level (in accordance with EN 60335-2-79)

Sound pressure level	$L_{pA} = 74.6 \text{ dB(A)}$
Uncertainty	$K_{pA} = 3.0 \text{ dB}$
Sound power level	$L_{WA} = 88.3 \text{ dB(A)}$
Uncertainty	$K_{WA} = 3.0 \text{ dB}$

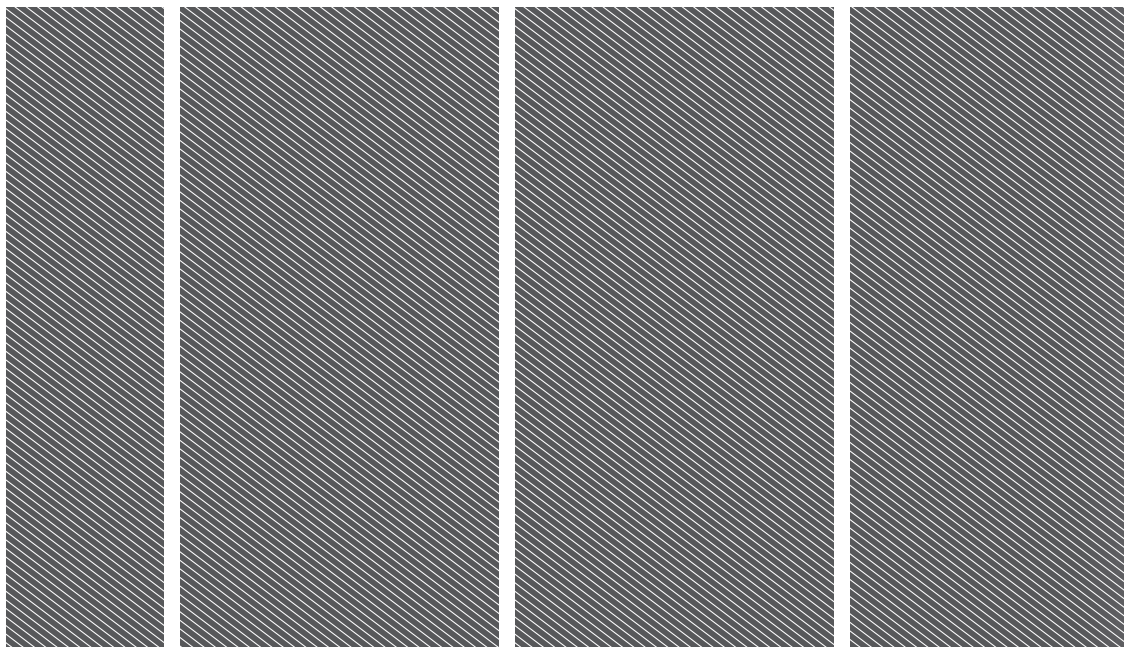
ACCESSORIES

1/4-inch turbo nozzle	RPW11
1/4-inch surface cleaner	RPW12
1/4-inch detergent bottle	RPW13
Backwards compatible 1/4-inch adapter pack	RPW14

⚠ WARNING! The declared vibration total values and the declared noise emission values given in this instruction manual have been measured in accordance with a standardised test and may be used to compare one tool with another. They may be used for a preliminary assessment of exposure.

The declared vibration and noise emission values represent the main applications of the tool. However, if the tool is used for different applications, used with different accessories, or poorly maintained, the vibration and noise emission may differ. These conditions may significantly increase the exposure levels over the total working period. An estimation of the level of exposure to vibration and noise should take into account the times when the tool is turned off or when it is running idle. These conditions may significantly reduce the exposure level over the total working period.

Identify additional safety measures to protect the operator from the effects of vibration and noise, such as maintaining the tool and the accessories, keeping the hands warm (in case of vibration), and organising work patterns.



Imported by:
Techtronic Industries Australia Pty Ltd
31 Gilby Road, Mount Waverley, VIC 3149
Melbourne, Australia

Techtronic Industries N.Z. Limited
Unit C, 70 Business Parade South,
Highbrook, Auckland 2013, New Zealand

RYOBI is a trade mark of Ryobi Limited, and is used under license.

099903101002-01

