



STUDENT ONLINE COURSE - USER GUIDE

COMPLETE TEACHERS ENROLMENT

One teacher / school administrator must enrol via the below process and complete a short 3 minute online video and question before the Online Course is sent to students



1) CLICK ON LINK TO START

[START COURSE NOW >](#)

if this link does not work, please contact - education@thelivelifewholeproject.com.au.

2) WATCH SHORT VIDEO

In the above course, there is a short 2 minute welcome video. If you wish to share the video with teachers click below & copy the URL

[VIEW VIDEO NOW >](#)



3) ANSWER QUESTIONS

Answer the question required that ensures you, as a representative of the school, have the consent to offer this education content in school

YOUR STUDENTS CAN NOW START THE COURSE



1) SHARE THE COURSE LINK

You will simply need to share the URL below with participating students (*Copy & Paste - then share*)

<https://live-life-whole.coassemble.com/enter/4vtIXBA>

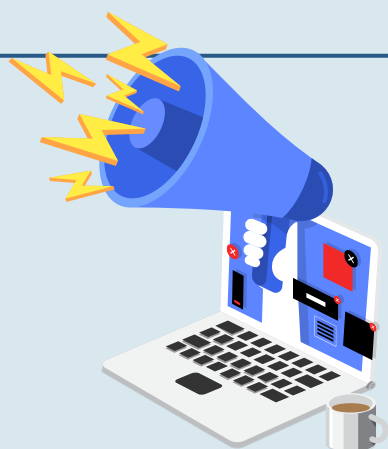


2) STUDENTS COMPLETE ONLINE COURSE

Students will be able to click on the link and be taken directly to the course for completion.

3) IN-COURSE CONTENT

Students MUST enter their school from the drop-down list & their year group.
Please note: There are summary questions at the end of Module 3 & Module 6, plus a final quiz at the end of the course.



4) REVIEW DATA & INSIGHTS

Once all the students have completed the online course, the team at Live Life Whole will send you a data pack and insights from the course

ADDITIONAL INFORMATION

- No data is collected from the students. The link is simply a link and their email addresses do not get tracked or recorded, so there is no way we can identify students that complete the course. This has been designed this way to ensure the safety and privacy of the student. If you require any further information on this, please do not hesitate to reach out to us at education@thelivelifewholeprogram.com.au
- The only identifiable data is which school they attend, which they will need to select from a drop down menu when they've completed each of the three quiz questions, however this will still mean we are unable to identify individual students.
- The course will automatically restart via the link if the student(s) close the window or exit out of the session. However, by clicking on the link again, they are able to simply restart the course, and just move to the module they were at.
- To view our Privacy Policy, click [here](#), or visit www.thelivelifewholeproject.com.au