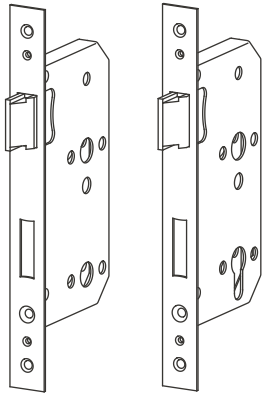


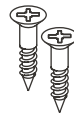
# Mortice lock

## INSTRUCTIONS

### INCLUDED



Lock body x1  
(either for a Euro  
cylinder lock or  
thumbturn)



Crosshead wood screw x2



Front plate x1



Flathead facing screw x2



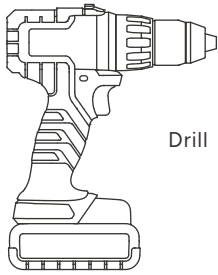
Strike plate x1



Flathead wood screw x2

## Mortice lock instructions

### TOOLS YOU'LL NEED



Drill



Crosshead screwdriver



2mm drill bit



5mm drill bit



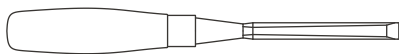
8mm drill bit



16mm drill bit

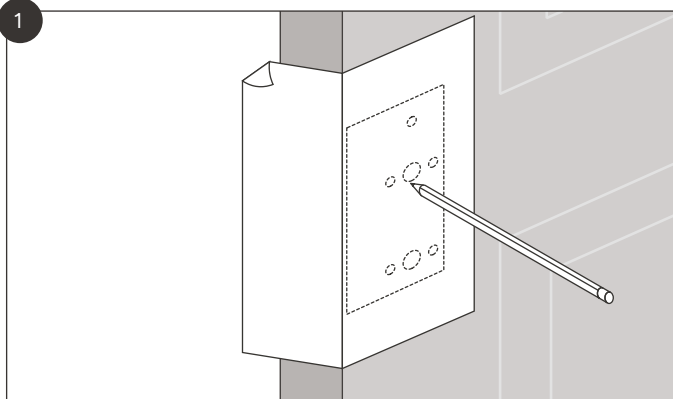


Flathead screwdriver



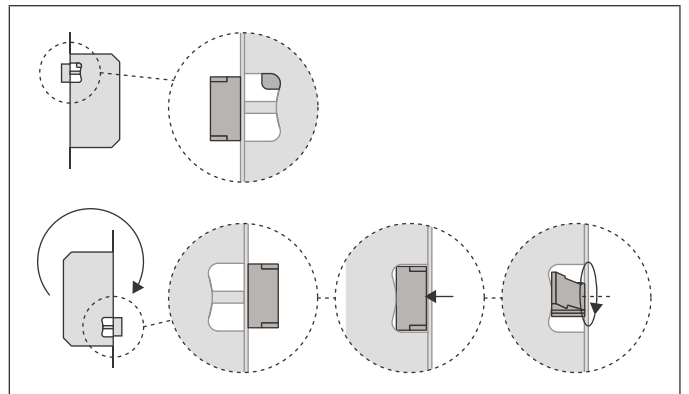
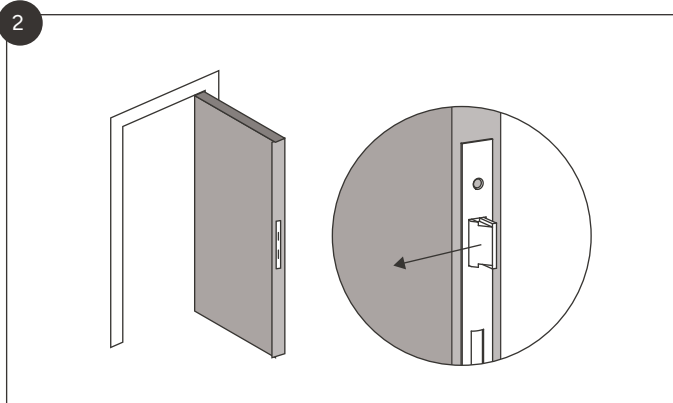
Chisel

## Mortice lock instructions

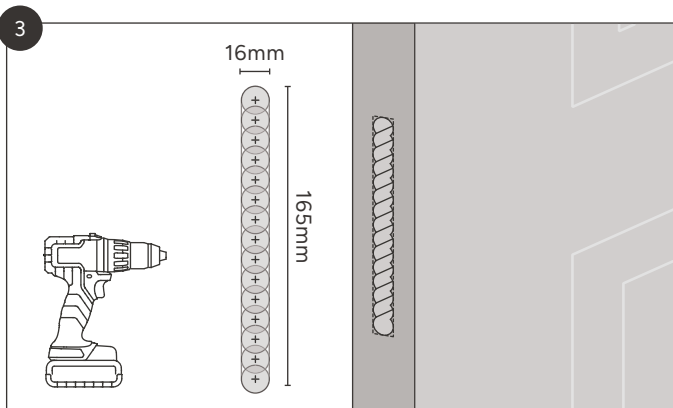


**Please note:** make sure you mark out the holes that are relevant for your hardware. Not all of the holes will be necessary.

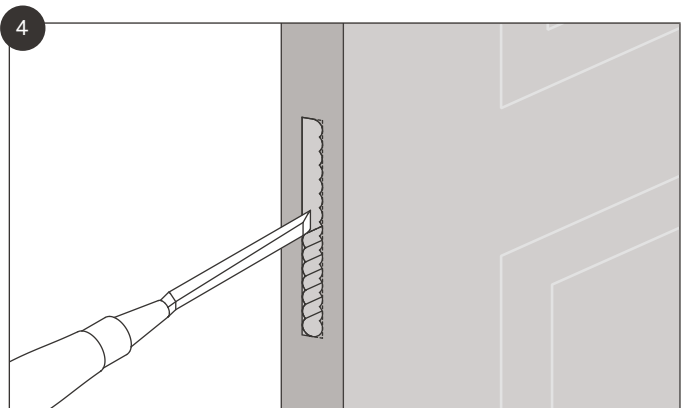
Mark out the desired location of the mechanism and holes on the door. The front plate template is on **page 7**. For Euro cylinder locks, use template A (**page 8**). For thumbturn locks, use template B (**page 9**).



Make sure the latch is facing the right way. If it isn't, turn the lock body upside down to release the limiter tab, push the latch all the way down, and rotate it through the gap.

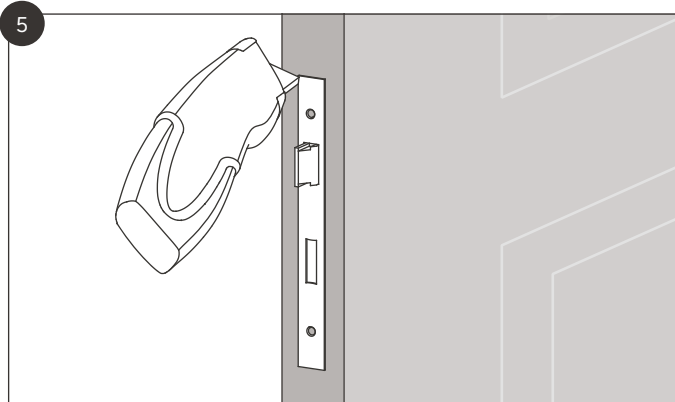


Use a 16mm drill bit to drill out the pocket for the mechanism. See **page 7** for a template for this.

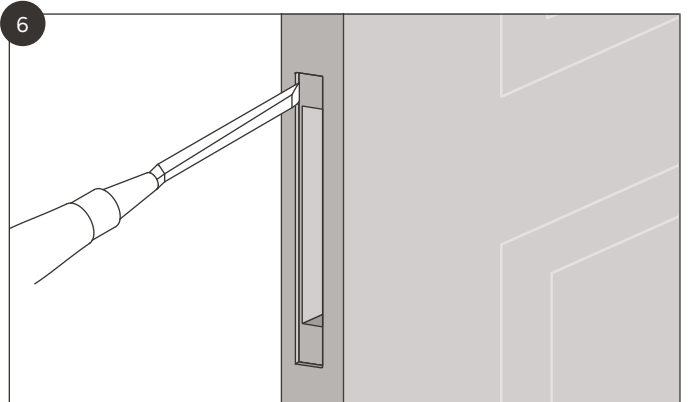


Chisel out the edges of the pocket.

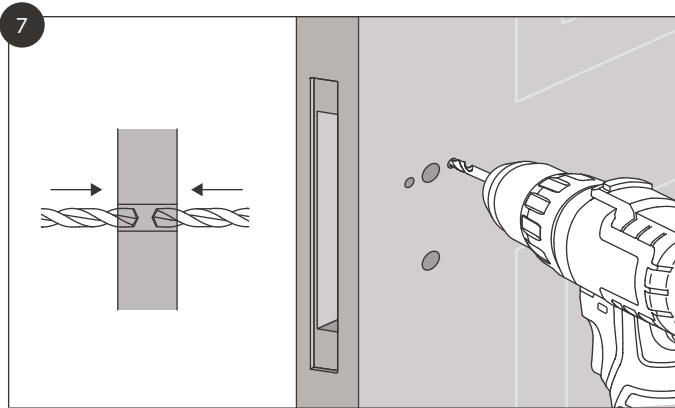
## Mortice lock instructions



Insert the lock and mark the plate outline. For best results we recommend using a sharp blade to carefully score the outline.



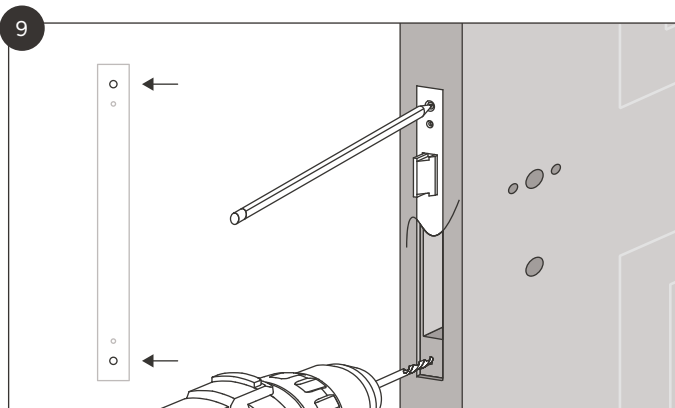
Chisel out a recess 3mm deep for the front plate.



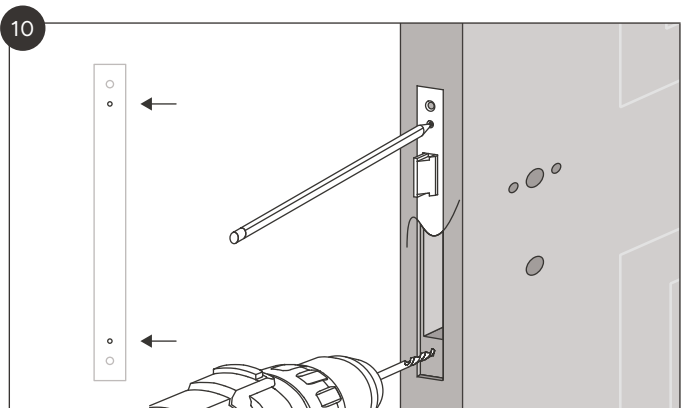
Drill holes for the spindle and lock as marked. Drill from both sides of the door to ensure the hole is not angled and to reduce chances of the door splintering.



Insert the lock to check everything fits and all the holes line up.

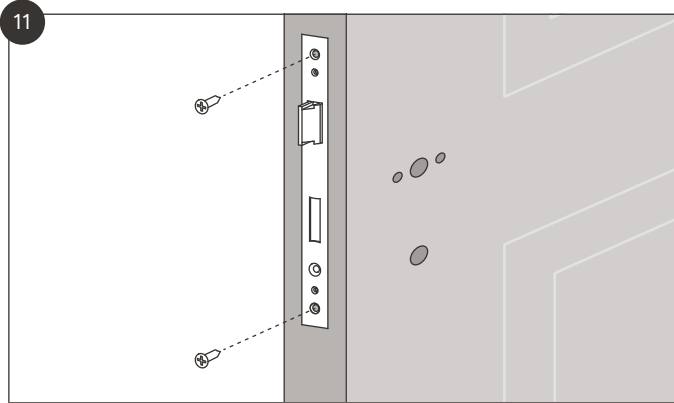


Use the lock body to mark out and drill 2mm pilot holes for the outer screws.

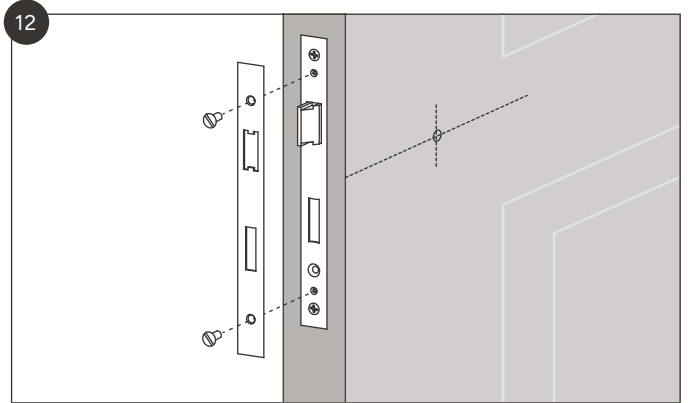


Mark and drill 5mm holes, about 4mm deep, for each of the inner screws.

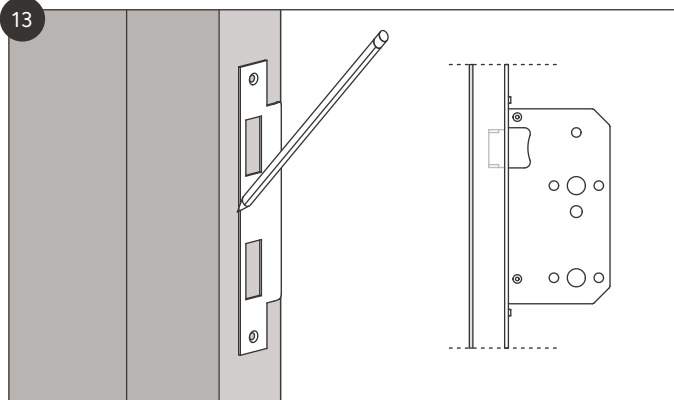
## Mortice lock instructions



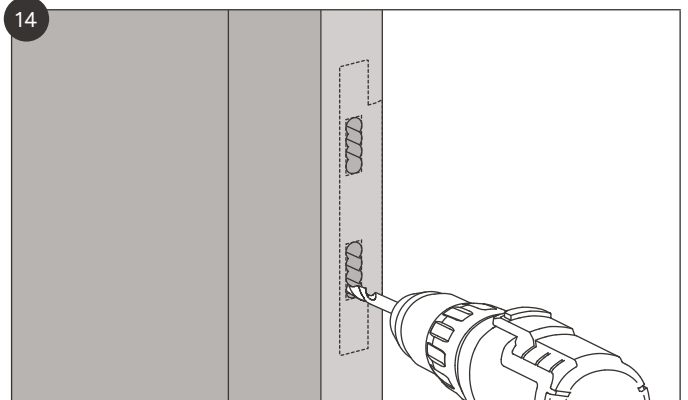
Use the crosshead wood screws to fix the lock into the door.



Use the flathead facing screws to attach the front plate to the lock body.

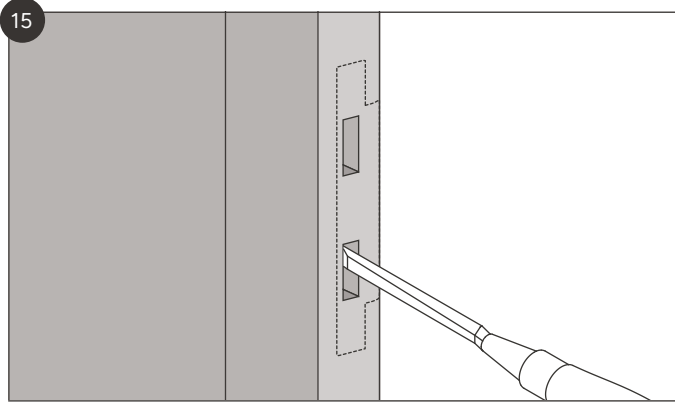


Mark out the strike plate. The top of the strike plate should be the same height as the lock front plate.

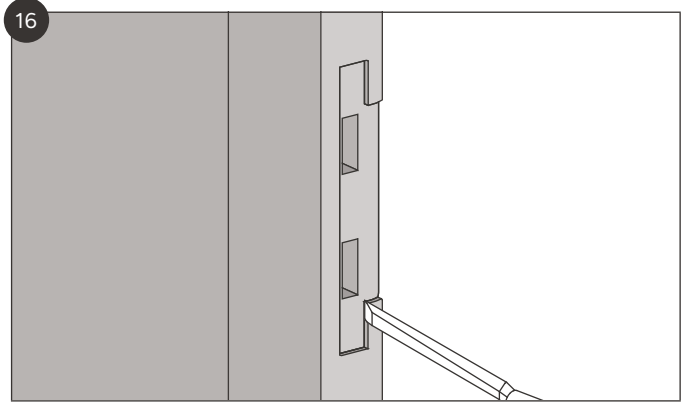


Drill out the majority of the strike plate hole.

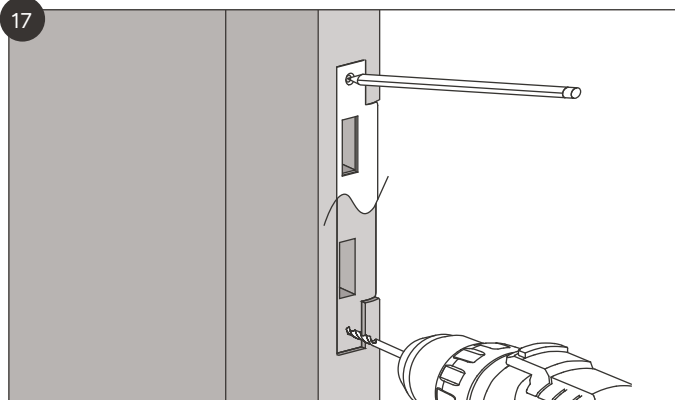
## Mortice lock instructions



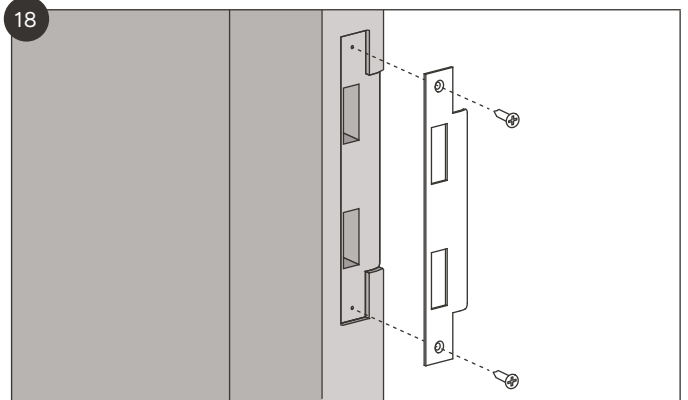
Chisel out the remainder of the hole and make square.



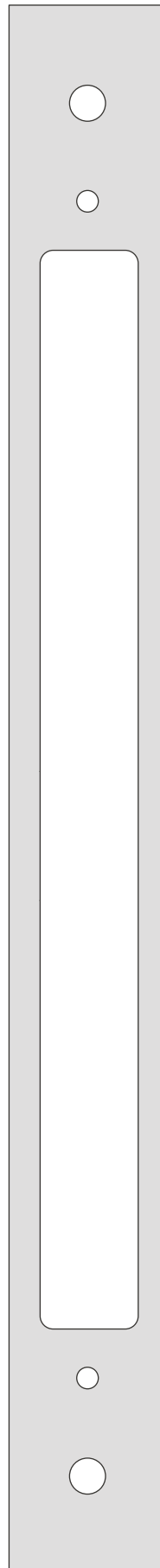
Chisel out the strike plate recess.



Mark and drill the strike plate pilot holes.



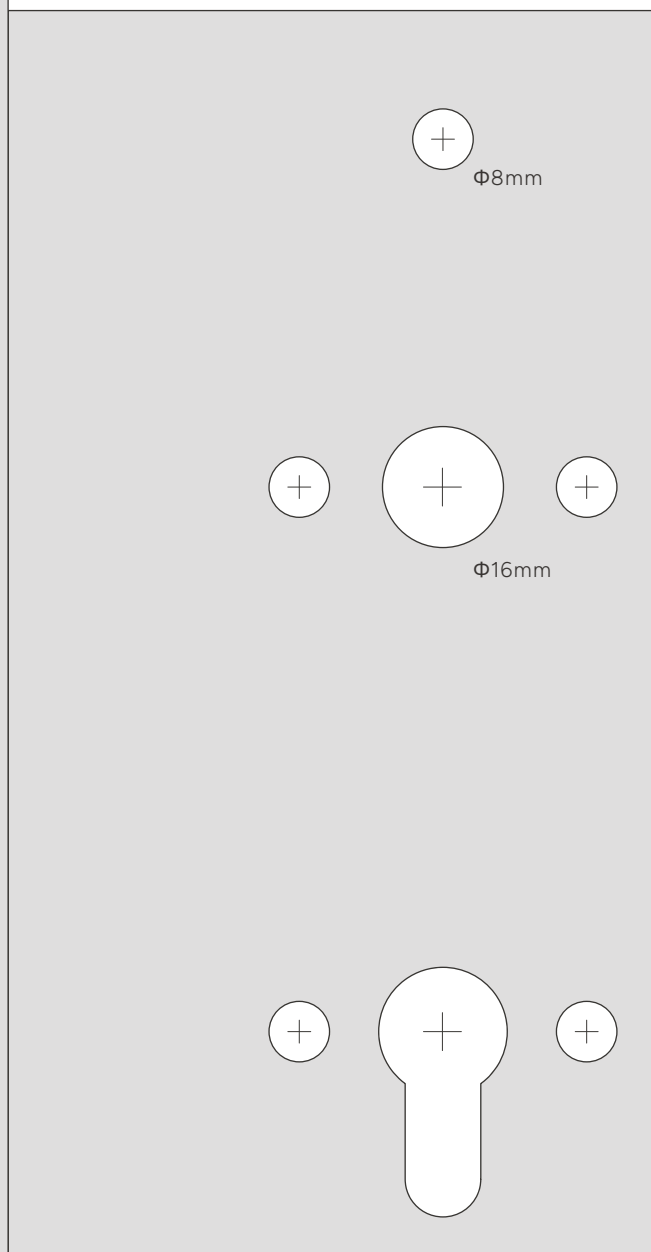
Screw the strike plate to the door frame.



45mm door  
35mm door

**Template A (Euro cylinder lock)**

FOLD HERE





**Template B (thumbturn)**

FOLD HERE

