



JLAB AUDIO
STUDIO ANC
HEADPHONES

We love that you are rocking JLab Audio!
We take pride in our products and fully stand behind them.



YOUR WARRANTY

All warranty claims are subject to JLab Audio authorization and at our sole discretion. Retain your proof of purchase to ensure warranty coverage.



CONTACT US

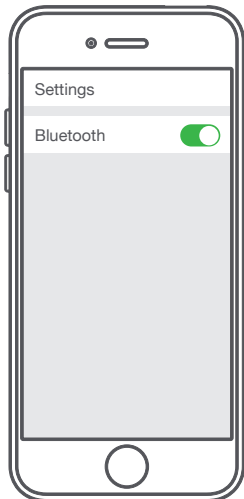
Reach out to us at support@jlabaudio.com or visit jlabaudio.com/contact

REGISTER TODAY

jlabaudio.com/register
[product updates](#) | [how-to tips](#)
[FAQs & more](#)

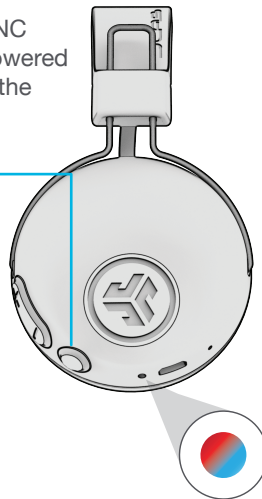
FIRST TIME SETUP: BLUETOOTH PAIRING

- 1** Turn on Bluetooth in your device settings.

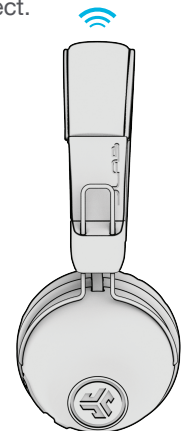
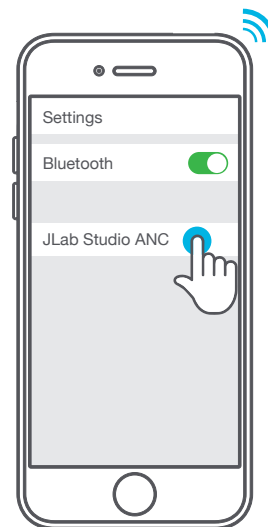


- 2** When the Studio ANC Headphones are powered off, press and hold the Power Button for approximately **8 seconds**.

Fast blinking red and blue light indicates searching for Bluetooth device.



- 3** Select "JLab Studio ANC" in your device settings to connect.



When the headphones are paired, voice prompts "You are connected" and **blue light will flash slowly**.

PAIRING NEW / ADDITIONAL DEVICES:

Turn OFF Bluetooth on your previously paired device and turn ON Bluetooth on new device. Repeat **FIRST TIME SETUP** process for new devices.

Notes:

- Bluetooth is a wireless radio technology, which means it is sensitive to objects between the headphone and the connected device. The headphone is designed to be used within 33 feet (10 meters) of a connected device, with no major objects in between (walls, etc.).
- Once successfully connected, the headphone will memorize your device and automatically pair when turned on in the future. Only one device may be connected at a time. To pair a different device, first unpair the current one through its Bluetooth settings.
- If for any reason Bluetooth connection is lost, manually reconnect your Bluetooth device.

BUTTON FUNCTIONS

VOLUME UP: Press once

TRACK FORWARD:
Press & hold 2+ seconds

VOLUME DOWN: Press once

TRACK BACKWARD:
Press & hold 2+ seconds

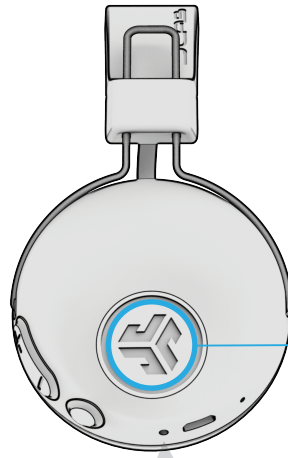
POWER ON / OFF:
Press & hold 2+ seconds

**PLAY / PAUSE / ANSWER /
HANG UP CALLS:** Press once.

REJECT INCOMING CALL:
Press & hold 1 second

**ACTIVATE SIRI (iOS) OR
"OK GOOGLE" (ANDROID):**
Press twice

BLUETOOTH PAIRING:
See FIRST TIME SETUP



ANC ON

ACTIVE NOISE CANCELING

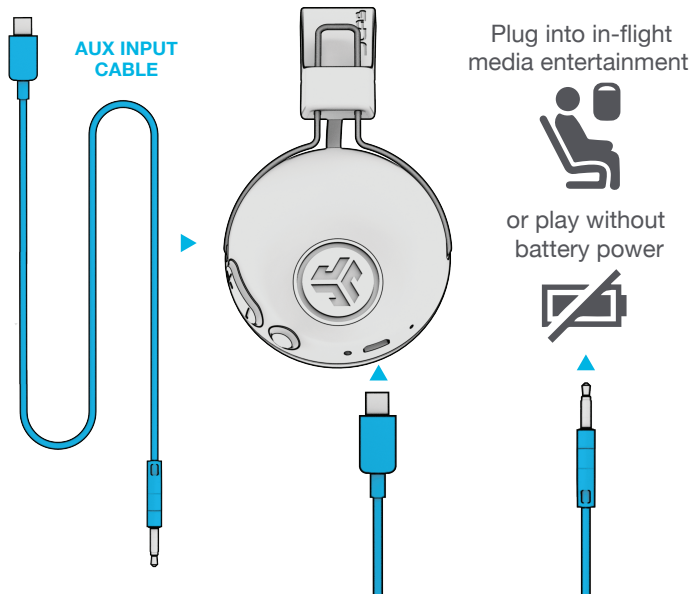
CONNECTED TO BLUETOOTH:

Press once to Power ON/OFF.
ON: 2 Beeps **OFF:** 1 Beep

CONNECTED TO AUX:

Press and hold 2+ seconds to power ON/OFF.
ON: 2 Beeps **OFF:** 1 Beep

AUX INPUT



NOTE:

- The ANC function can work when connected with AUX INPUT. Press and hold 2+ seconds the ANC button to Power ON/OFF.
- The AUX INPUT will override your Bluetooth device connection. Unplug to revert back to Bluetooth.
- The button functions for your Bluetooth device will not work when AUX INPUT is connected.
- The volume will be dependent on your AUX device settings. Adjust accordingly.

CHARGING

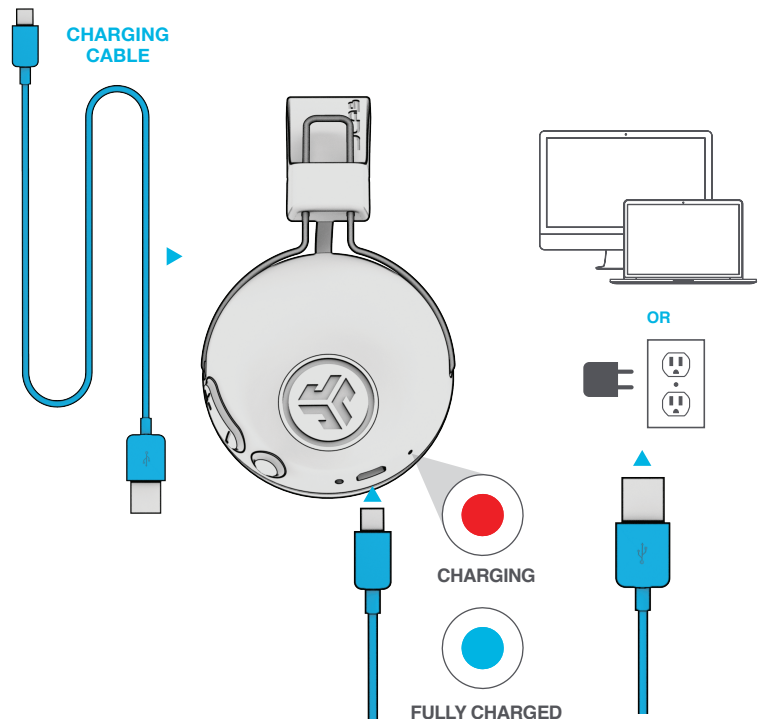
Note: For optimum performance, charge overnight with Micro USB cable prior to using. Allow about 3 hours to fully charge.

Connect the Micro USB (included) to the headphone and connect the USB into a computer or AC adaptor (not included). Make sure the USB connection has a power output source.

Solid red light indicates the headphone is charging.

Solid blue light indicates charging is complete.

Note: Studio ANC can still be used while charging. Power on and connect to device after charging occurs.



CAUTIONS

- Avoid getting moisture or liquids on the headphone cups.
 - Avoid extreme heat, cold, and humidity.
 - Avoid dropping or crushing headphones, stressing the cable by rapid pulling or extreme force, or bending the cable at a sharp angle.
 - Wax may build up in headphone cups, lowering the sound quality. Carefully remove the wax with a cotton swab or other small tool to improve the sound quality.
 - If you experience discomfort or pain, try lowering the volume or discontinuing use temporarily.
 - If you experience regular discomfort while using this product, discontinue use and consult your physician.
 - We recommend you treat your headphones as you would a nice pair of sunglasses and keep them in safe location when not in use.
-



[Shop products](#) | [Product alerts](#) | [Burn-in your headphones](#)

JLab Audio + Burn-in Tool

