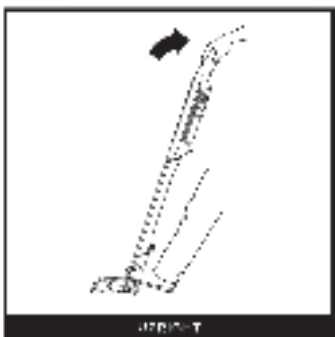
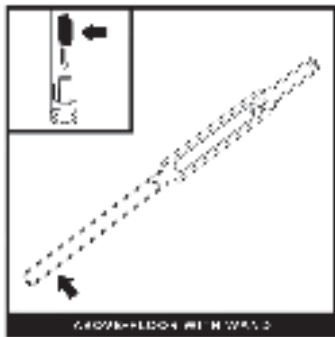


CLEANING MODES



Use the Power Fin Floor Nozzle for powerful cleaning on both hard floors and carpets. The brushroll is active, while the hand vacuum is activated and powered on, and the hand is at the heel.



Use the Power Fin Floor Nozzle for powerful cleaning on both hard floors and carpets. The brushroll is active, while the hand vacuum is activated and powered on, and the hand is at the heel.



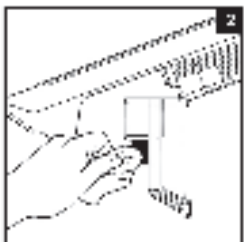
Detach the hand vacuum from the groove-floor nozzle. All the release buttons on both sides of the handle, and the hand vacuum of the wand. To activate the groove-floor cleaning mode, click into the opening in the handle to remove the release buttons on both sides of the handle and click into the opening.

NOTE: Do not touch any parts or accessories in a disassembled state.

EMPTYING THE DUST CUP



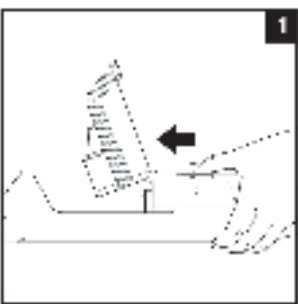
1. With the power off, slide the release button forward and the dust cup will swing open. Push the release button slightly to slide off dust and debris.



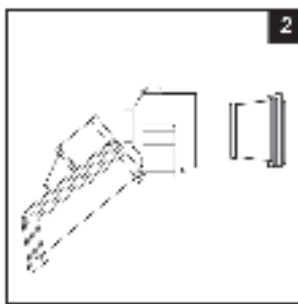
2. Wipe the screen inside the dust cup gently with a dry cloth to remove dust and dirt.

NOTE: Do not touch any parts or accessories in a disassembled state.

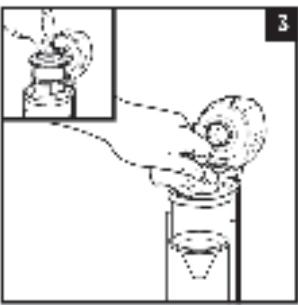
CLEANING THE DUST CUP AND FILTER



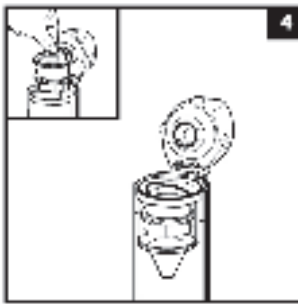
1. With the dust cup open and the power off, press the filter release button below the handle and pull out the filter housing.



2. Place the dust cup behind the filter housing and pull out the filter to clean the filter. Use a wet cloth with water to clean the filter for 24 hours before reattaching. To reattach, slide back into the filter housing and press into place.

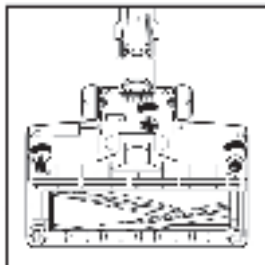


3. To deep clean the cup, first remove the **avajint c Dycp**. Lift it out by the handle on the frame. Rinse the dust cup with water, and wipe it clean with a damp cloth. Allow it to air-dry for 24 hours.

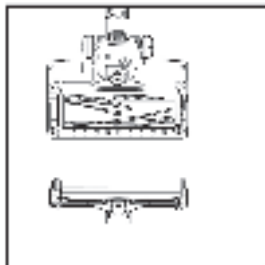


4. When the dust cup is completely dry, slide the screen filter back into place. Push the screen filter into the dust cup.

NOZZLE MAINTENANCE



1. Turn off the vacuum.
2. Press the motor release button to detach the nozzle from the wand.
3. Using a cloth, turn the flange counter-clockwise to open, turn off the vacuum and remove the nozzle from the wand.



4. Cleaning the nozzle and removing debris from the brushroll and floor nozzle.
5. With the cover removed, wipe the brushroll clean with a dry towel.
6. Turn the cover clockwise to the bottom of the dust cup. Press down firmly on the cover. To check clockwise to close, until the click is heard.

CHECKING FOR BLOCKAGES

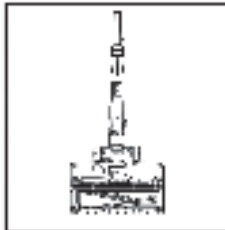
If you run over a wire or other object or notice a noise change while vacuuming, check for blockages or debris caught in the brushroll.



Checking for Blockages in the Hand Vacuum:
1. Turn off the vacuum.
2. Remove the hand vacuum from the wand.
3. Check all intake openings to the floor nozzle and remove any debris or blockages.



Checking for Blockages in the Wand:
1. Turn off the vacuum.
2. Detach the hand vacuum and floor nozzle from the wand.
3. Check the interior of the wand for blockages and debris.
4. Clear away any debris and blockages.



Checking for Blockages in the Floor Nozzle:
1. Turn off the vacuum.
2. Detach the wand.
3. Using a cloth, turn the flange counter-clockwise to open the nozzle counter-clockwise to open.
4. Push the cover open and lift back the back of the nozzle.
5. Check the opening and remove any debris.
6. Replace the cover by sliding the tabs into the slots. Press down firmly until you hear the lock click into place.

TROUBLESHOOTING

WARNING: To reduce the risk of shock and unintended operation, turn off power and remove the battery before servicing.

Vacuum is not picking up debris. No suction or light suction. Third indicator light on hand vacuum is solid yellow. (Refer to Checking for Blockages section for more information.)

1. Dust cup may be full, empty dust cup.
2. Check floor nozzle for any debris and vacuum floor nozzle.
3. Remove any string, carpet fibers, or other debris that may be wrapped around the brushroll.
4. Check connection between hand vacuum and wand for blockages, clear blockages if required.
5. Check filter to see if they were cleaned. Follow instructions for cleaning and reassembly of the filter to ensure proper fit.

Vacuum lifts area rugs.

1. Make sure you are not engaging floor mode. Make sure when vacuuming area rugs or rugs with delicate coverings.
2. Turn off the brushroll coverage and the carpet, then restart.

My vacuum has a PowerFin nozzle but the brushroll doesn't spin.

1. Immediately turn off the vacuum, remove any blockages before using the vacuum back on. Make sure the wand is locked back for coverage for the brushroll to engage while in use.
2. If the indicator light is flashing and they are not illuminated, there is a connection issue between the hand vacuum and the wand. Try disconnecting the parts to the vacuuming unit.

Vacuum turns off on its own.

There are several possible reasons for the vacuum turning off on its own, including blockages, battery issues, and overheating. Follow the maintenance below, parts may be replaced if required.

1. Turn on the vacuum and check the battery indicator light on the hand vacuum. Recharging a battery, and ensure vacuum is not off before recharging the battery.
2. Empty the dust cup and clean filter (See the Cleaning the Dust Cup and Filter section).
3. Check wand, hose, and floor nozzle for openings and remove any blockages.
4. Allow a full 4-hour battery rest for at least 48 hours after a full charge to return to normal operation.
5. Press the On/Off button to restart the vacuum.

Battery Indicator Lights on hand vacuum are flashing.

• Bottom LED is solid yellow (Fig. 4A). No debris cup. (See the Maintenance for Vacuum section.)

• Top LED is flashing (Fig. 4B). Battery needs to be recharged.

Contact a Service Center if you experience any of the indications listed below.

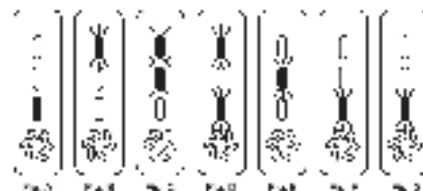
• Top two LED's are flashing (Fig. 4C). Overcurrent or short.

• Top and bottom LED's are flashing (Fig. 4D). Motor is overheating.

• Middle LED is flashing (Fig. 4E). Over speed.

• Bottom LED is flashing (Fig. 4F). Communication.

• Bottom LED is solid yellow (Fig. 6A). There may be an issue with the problem with the motor.



NOTE: Vacuum will turn off automatically if it is not used for 24 hours.

PLEASE READ CAREFULLY AND KEEP FOR FUTURE REFERENCE.

ShinNinja Operating LLC

Illustrations may differ from actual products. We are constantly striving to improve our products; therefore the specifications contained herein are subject to change without notice.

© ShinNinja LLC. All rights reserved. All other trademarks are the property of their respective owners.



804106594



PRINTED IN MEXICO / SC: 19-10-2021
OBPN: WS630Series_IB_E_REV_MV9_201214
SHNMDL:WS630_B / TAB/ Elbrd:J.E.

Please make sure to read the enclosed Shark® Owners Guide prior to using your vacuum.

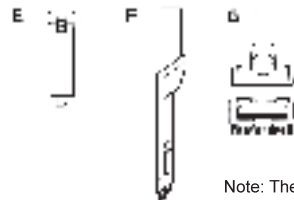
Shark® WANDVAC™ SYSTEM

QUICK START GUIDE

804006594A

WHAT'S INSIDE:

- A** Hand Vacuum
- B** Wand
- C** PowerPlus Floor Nozzle
- D** WALK-THRU™ System Charging Station
- E** Battery Pack
- F** Dustor Crevice Tool
- G** Pet Multi-Tool

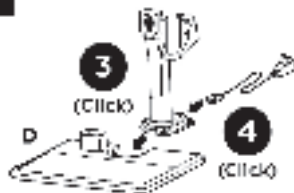
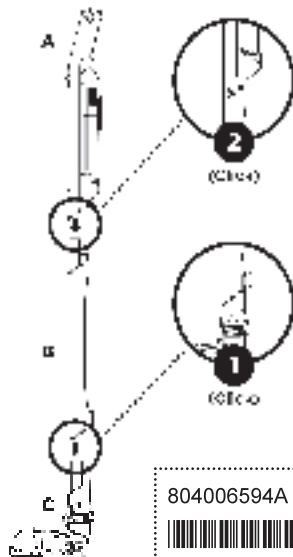


1. Slide the wand into the neck of the floor nozzle until it clicks into place.
2. Insert the hand vacuum into the back of the wand until it clicks.
3. Make sure the dock slot is facing up. Slide the charging post into the slot on the back of the dock until it clicks into place.
4. Place the dock on the floor near a wall outlet. Plug the wall charger into the outlet then connect the cord to the adapter on the back of the charging post.
5. Remove the charging post from the dock and the dock plug.

For proper operation, ensure all components are completely connected and clicked into place.

Note: The images shown here are for illustrative purpose only and may vary.

ASSEMBLY



The images shown here are for illustrative purpose only and may vary.

804006594A



PRINTED IN MEXICO / SC:03-31-2022 Elbrd:

M.C / 0.5P / SHNMDL: WS632_B

OBPN:WS632SERIES_QSG_REV_MV2_210226