

FCC Caution:

This device complies with part 15 of the FCC Rules. Operation is subject to the following two conditions: (1) This device may not cause harmful interference, and (2) this device must accept any interference received, including interference that may cause undesired operation.

Any changes or modifications not expressly approved by the party responsible for compliance could void the user's authority to operate the equipment.

NOTE: This equipment has been tested and found to comply with the limits for a Class B digital device, pursuant to Part 15 of the FCC Rules. These limits are designed to provide reasonable protection against harmful interference in a residential installation. This equipment generates, uses and can radiate radio frequency energy and, if not installed and used in accordance with the instructions, may cause harmful interference to radio communications. However, there is no guarantee that interference will not occur in a particular installation. If this equipment does cause harmful interference to radio or television reception, which can be determined by turning the equipment off and on, the user is encouraged to try to correct the interference by one or more of the following measures:

- Reorient or relocate the receiving antenna.

-- Increase the separation between the equipment and receiver.

-- Connect the equipment into an outlet on a circuit different

from that to which the receiver is connected.

-- Consult the dealer or an experienced radio/TV technician for help.

The device has been evaluated to meet general RF exposure requirement. The device can be used in portable exposure condition without restriction.

## Warranty card

Dear users, thank you very much for using our products.  
Please fill in carefully and keep them properly.  
The company reserves the right to interpret the after-sales  
service regulations of this product.

## Warranty policy

Dear users, according to the "Regulations on Liability for Repair, Replacement and Return of Household Audiovisual Commodities" issued by the relevant national departments on July 23, 2002, you will enjoy a comprehensive

- [illegible]

## Non-warranty policy

In one of the following situations, the Three Guarantees will not be implemented, but repairs can be implemented for a fee:

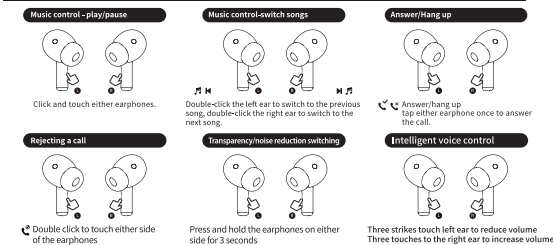
1. Damage caused by human factors, including damage caused by use in an abnormal working environment, use not in accordance with the instructions, etc.
2. Improper use, if the product is exposed to abnormal humidity and temperature for a long time, it will cause performance damage.
3. The user disassembles the machine without authorization, repairs, refits or repairs without the joint guarantee unit of the company.
4. Damage caused by force majeure (such as flood, fire, earthquake, lightning strike, etc).
5. If there is no product warranty card and valid purchase certificate.
6. The product warranty card and purchase voucher do not match the product model or have been altered without authorization.

Warranty record card			
User info			
Model		Date of purchase	
Username		Contact number	
Mailing address			
Sales call		Unit	(Signed and sealed)
Product code		Sales address	
Warranty content			
Date	Symptoms	Overhaul	Remark

### Instructions for use

1. Power on: Turn on the charging compartment, and the headphones will turn on automatically.
2. Shut down: Put the headphones into the charging compartment, and the headphones will automatically turn off and charge after closing the lid.
3. Play/Pause: Click to touch any side of the headphones.
4. Song switching: Double-click to touch the left ear to switch to the previous song, and double-click to touch the right ear to switch to the next song.
5. Hang/hang up: When receiving an incoming call/click and touch any side of the headphones to answer or hang up the phone.
6. Reject incoming calls: When receiving an incoming call, double-click and touch either side of the headphones.
7. Transcription/noise reduction switching: Press and hold the headphones on either side of the earbuds for 3 seconds.
8. Volume control: Press three clicks on the left ear to decrease the volume, and three clicks on the right ear to increase the volume.
9. Forced pairing of headphones/clearing pairing information with the device: left/right headphones enter the warehouse (when the lid is kept open) long press the warehouse button for 3 seconds to clear the pairing information and force left/right ear pairing.

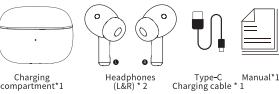
## Quick start guide



### Product parameters

Product Name: TWS Bluetooth headphones  
Bluetooth Version: V5.4  
Earphone Battery Capacity: 35mAh  
Charging Compartment Battery Capacity: 300mAh  
Charging Compartment Trated Input: 5V---260mA  
Implementation Standard: GB 4943.1-2022  
Support AAC, SBC high-quality audio decoding  
Support A2DP / AVRCP / HFP / HSP / SPP

## Packing list



According to the development of the company's business, the functional parameters and picture content of the product may be adjusted at any time. The company cannot guarantee the timely update of the relevant packaging and instructions. The customer shall be subject to the function and content of actual use.

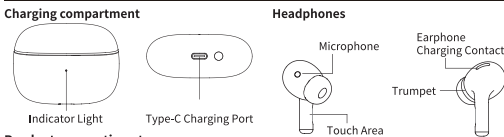
## Foreword

Thank you for purchasing our products. Before using this product, please read this manual carefully. Please be sure to keep this manual for the next reference. All the contents have been carefully compiled by the company. Please forgive me if there are any printing and omission problems or errors.

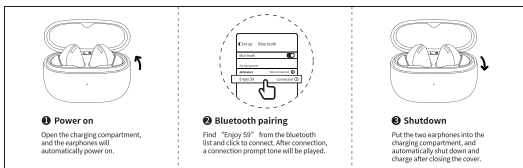
### Precautions

- ① Do not use the machine in extremely hot, cold, dusty and humid environments.
- ② Do not drop, hit, or violently vibrate during use.
- ③ Product performance and functions are subject to change without notice
- ④ The headset contains batteries and should not be exposed to sunlight, fire or similar excessive heat.
- ⑤ Do not disassemble the machine without authorization to avoid danger.

### Schematic



### Product connection steps

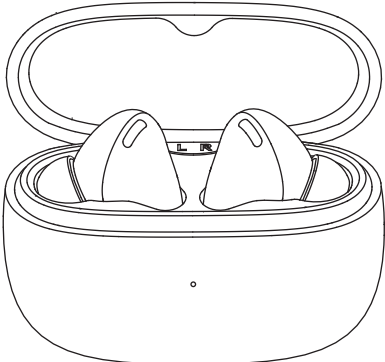


### Charging instructions

1. When the charging compartment indicates the light stays on, please check it in time. The orange light stays on when charging, and the green light stays on when fully charged.
2. Connect one end of the USB charging cable to the Type-C charging interface of the headset, and connect to the USB port of the power adapter.
3. When the power of the left and right earphones is low, a low battery warning tone will be reported. Please put the headset into the charging compartment and close the cover to charge.
4. This product is not sold without adapters. Consumers should buy the power adapter that obtains CCC certification and meets the standard requirements.
5. When there are foreign objects on the earphone charging interface and the contact is poor, please use a cotton swab dipped in alcohol to gently wipe and clean the earphone charging interface.

# GT12

## TWS Bluetooth headphones



## Quick Start Guide

说明书+保修卡尺寸: 88\*88mm

单黑白印刷（双铜105G 风琴4折）

