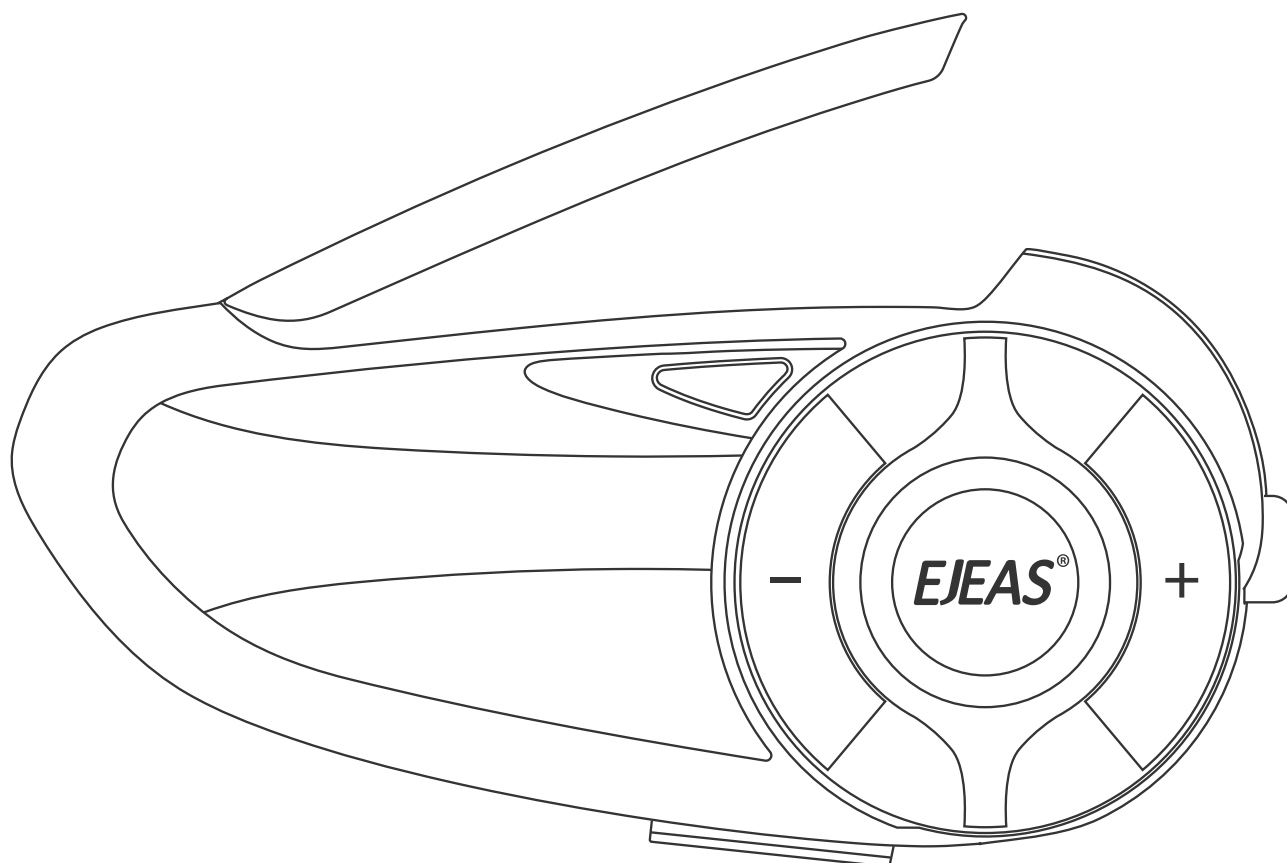


# EJEAS®



More  
Languages



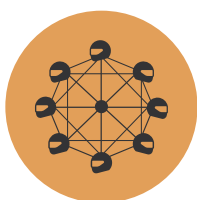
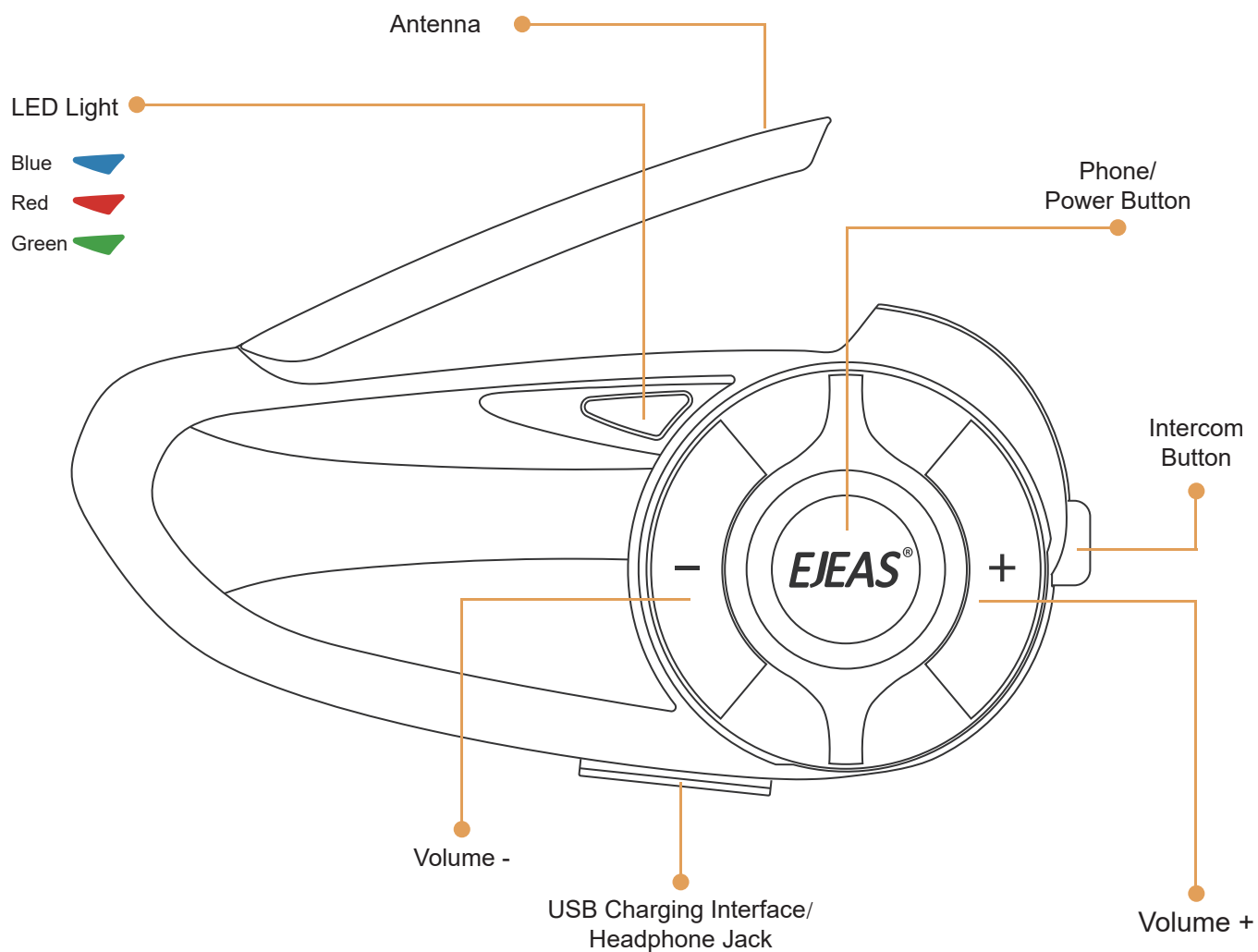
## Q8

# User Manual

Mesh Group Intercom System

🔍 [www.ejeas.com](http://www.ejeas.com)

# Product Details



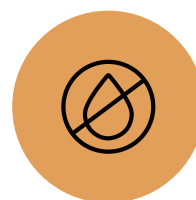
MESH 6  
People Intercom



Bluetooth Intercom



Music Share



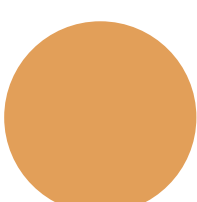
IP67  
Waterproof



Voice Assistant



FM Radio



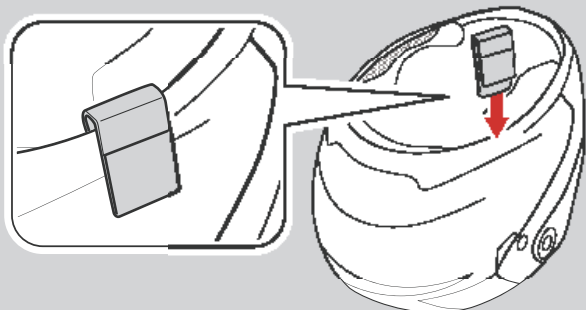
Support EUC Remote



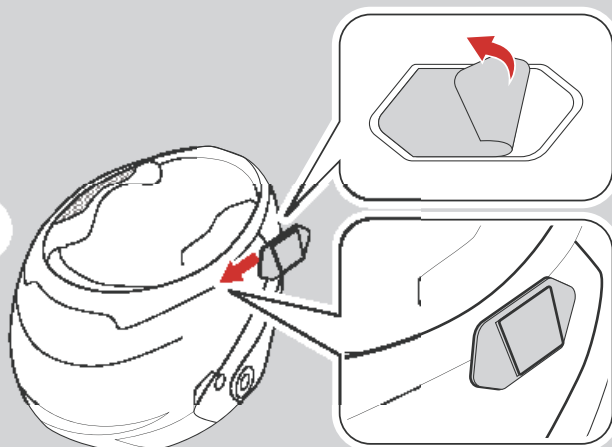
Support Mobile App

## Product Installation

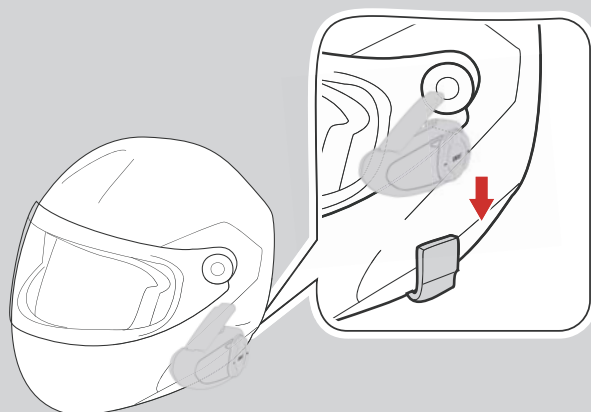
1



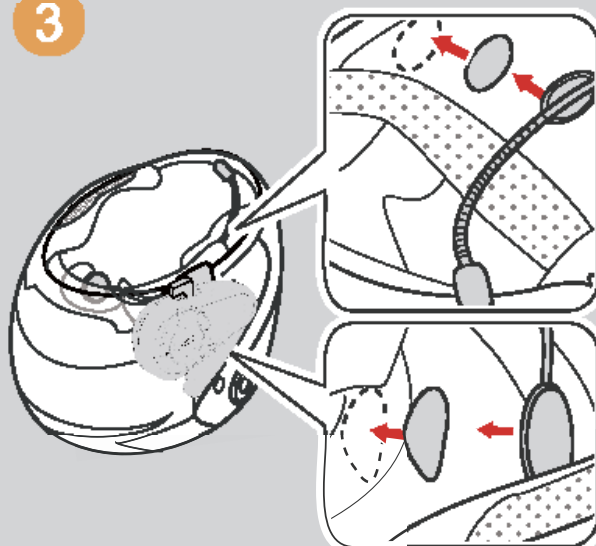
or



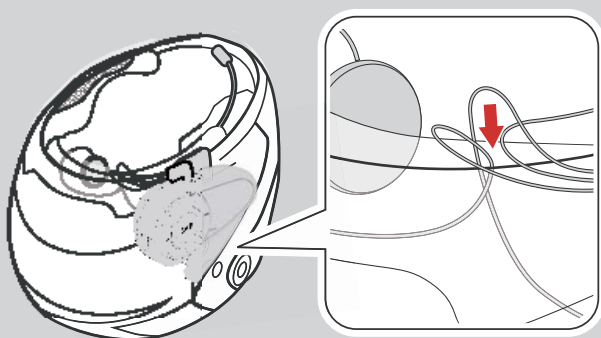
2



3



4

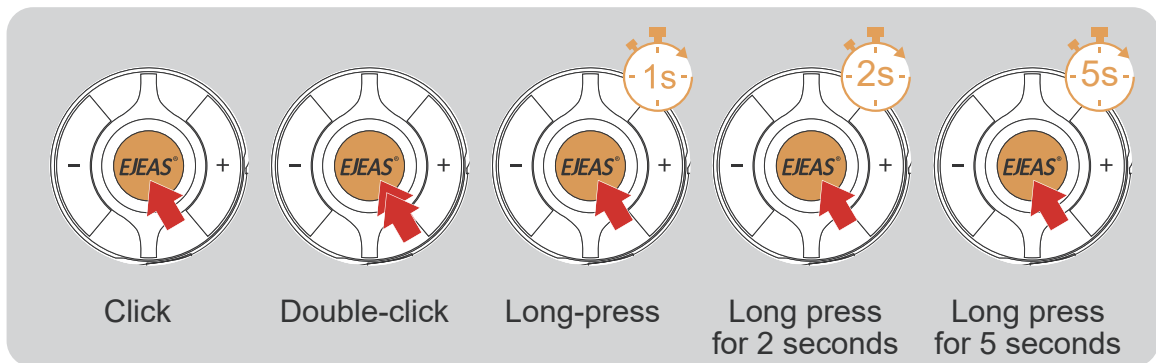


5



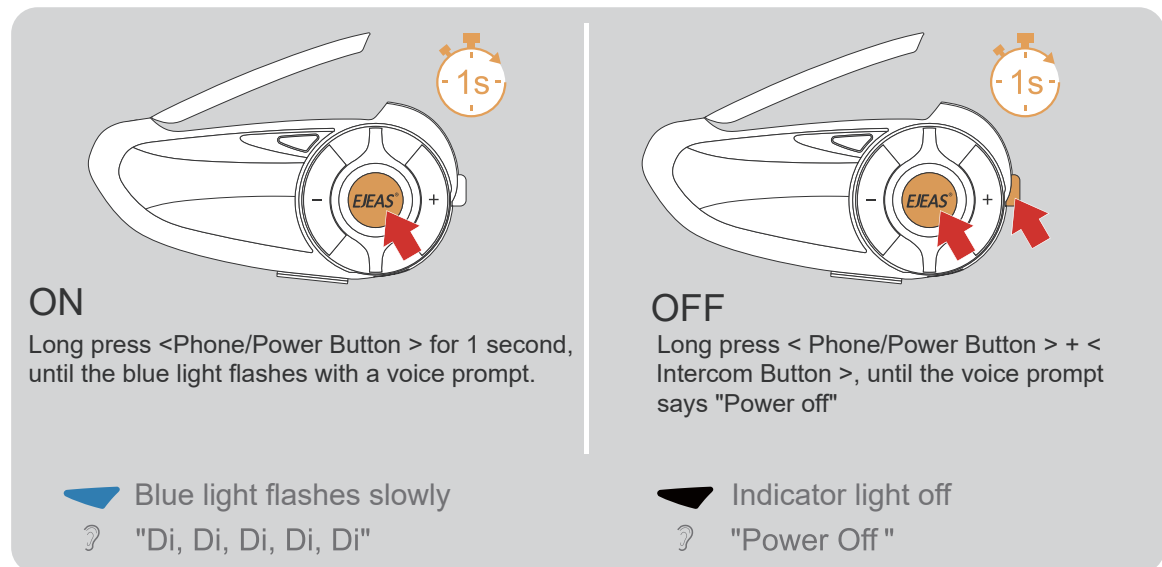
# Product Operation

## Operation Diagram



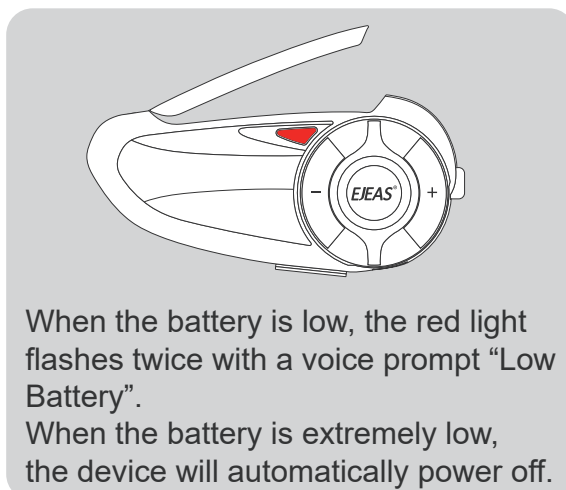
## Basic Operation

### Power ON/OFF Please charge it before using

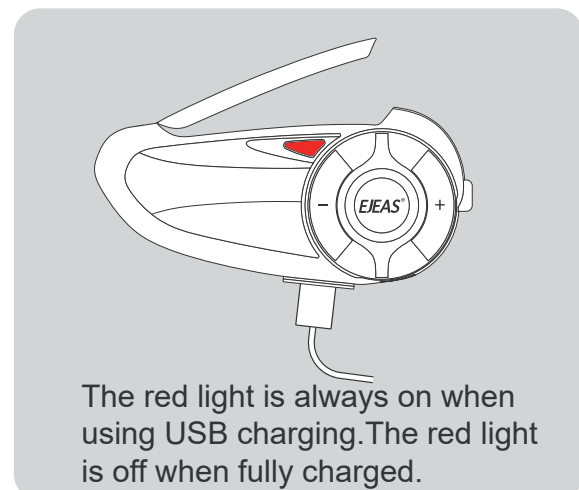


Reset: It will automatically power off while charging and can be used while charging after powering on.

### Low Battery Indication

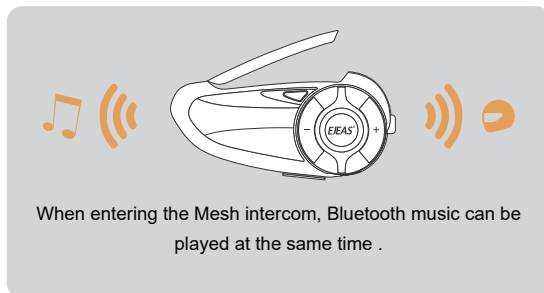


### Charging Indication

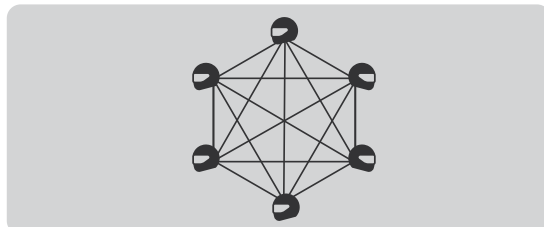


Battery Inquiry: After connecting to the phone via Bluetooth, you can see the power icon on the phone side.

## Mesh Intercom

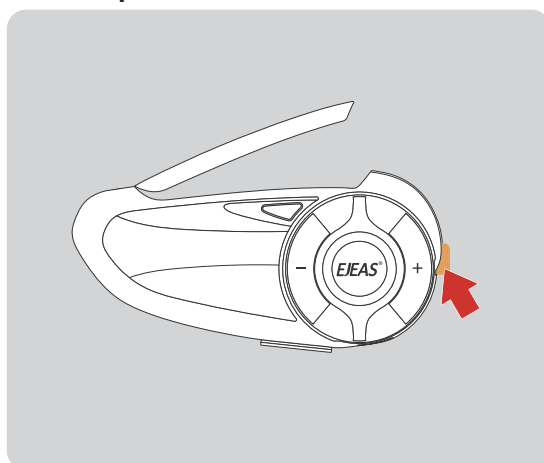


Mesh intercom is a multi-hop technology mesh network intercom (Communication frequency 470-488MHz). On account of large number of participants and unrestricted location, people are able to move at will within the effective range. It is not only superior to the traditional Bluetooth chain intercom, but has a longer transmission distance and better anti-interference ability.



Features: Intercom with up to 6 people, 5 channels in total. If participating in campaign mode as a listener, there is no limit to the number of people who can join the intercom in a listen-only manner.

## Microphone Mute



When using Mesh Intercom, you can mute the microphone with a short press of the < Intercom Button >, so that the sound of your own voice will not be sent to others.

? “Microphone Mute”

Press <Intercom Button> to unmute.

? “Microphone unmute”

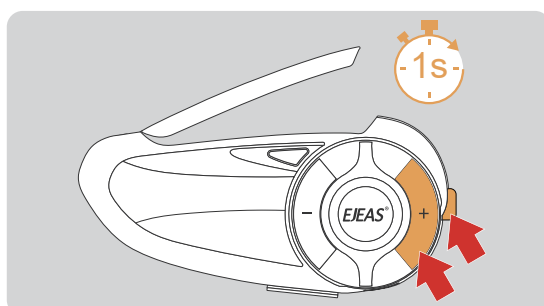
**Note: Only valid for Mesh intercom.**

## VOX Voice Sensitivity

When using Mesh intercom, the system will enter a sleep mode when there is no speech detected. Speaking will immediately activate the system and start the intercom. Users can adjust the voice activation sensitivity to suit their own voice and avoid false activations or the need for excessively loud sounds to activate the system.

There are 5 levels of sensitivity settings, default level 3. Level 5 has the highest sensitivity and is the easiest to activate the system, level 1 has the lowest sensitivity.

When driving at high speed, please use low level to avoid wind noise to activate the microphone, and speak loudly to activate the microphone; while at low speed, you can use high level so that whispering can easily activate the microphone.

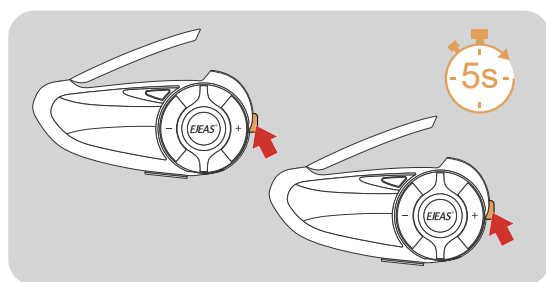


After turning on Mesh intercom, press and hold the <Intercom Button>+<Volume +> to cycle through sensitivity.

1->5->1 cycle switching.

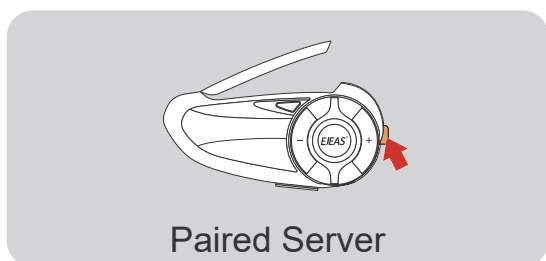
? “{VOX n} (n is 1~5, indicating 5 levels) ”

## Pairing Steps as Members:



- 1 All devices first enter the intercom pairing state, long press <Intercom Button> (about 5s) until you hear a prompt and the red light and green light flash alternately.

Red light and green light flash alternately  
 ? "Mesh Pairing"



- 2 Take one of them as the paired server, press <Intercom Button> , you will hear a beep and the red light and green light will flash alternately.

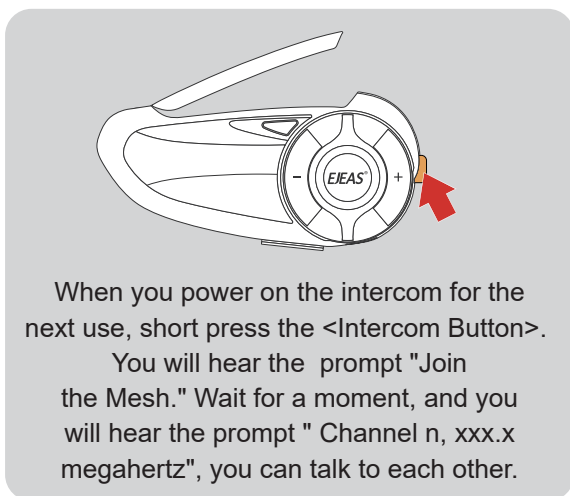
Red light and green light flash alternately  
 ? "Bi"

Wait for a moment and hear "Pairing Successful" from all devices, which means the pairing is successful.

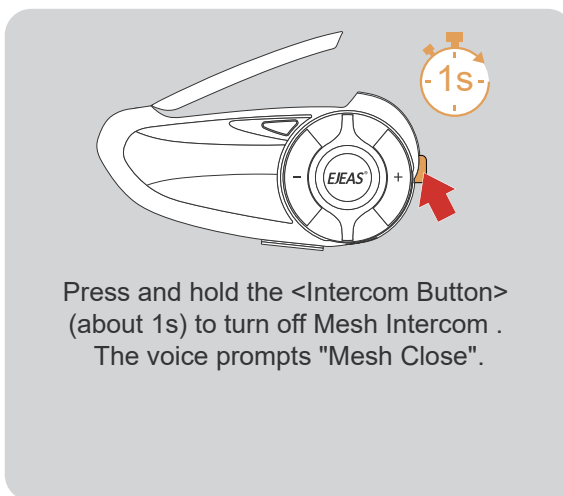
? "Pairing Successful"

Wait a few moments and you hear the prompt "Channel n, xxx.x megahertz" from all the intercoms, you can start communicating and hear each other's voices.

## Intercom Reconnection



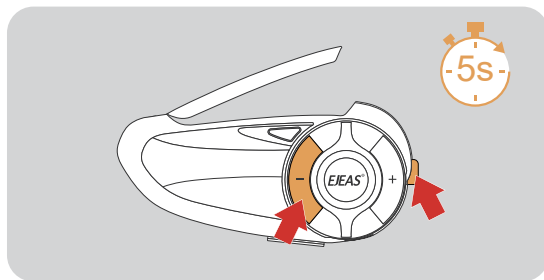
## Turn off MESH Intercom



If the device is powered off without turning the intercom off, the intercom will be automatically restored upon the next power-on.

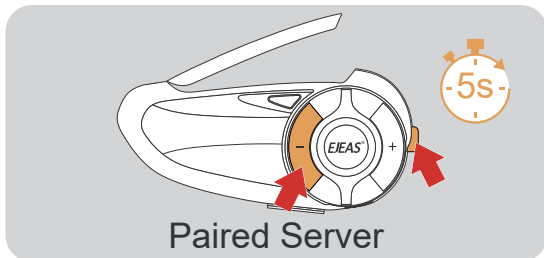
## Pairing Steps as Listeners :

In the case that other intercoms have formed a team, you can become the listener of the team through pairing.



- 1 Take the intercom to be paired, enter listening mode pairing, long press <Intercom Button> + <Volume -> (about 5s), and prompt "Listen Mesh Pairing", the red light and green light will flash alternately.

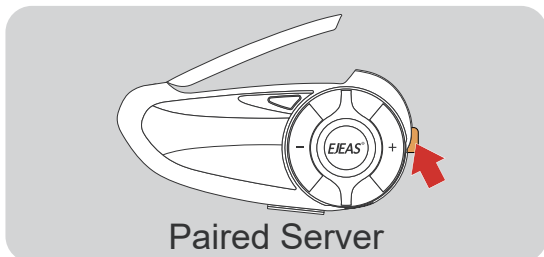
Red light and green light flash alternately  
? "Listen Mesh Pairing"



- 2 Take an intercom that has been paired as a paired server, entering listening mode pairing, and press and hold <Intercom Button> + <Volume -> (about 5s) to prompt "Listen Mesh Pairing".

Note: Unjoined machines can only be joined again through the server.

? "Listen Mesh Pairing"

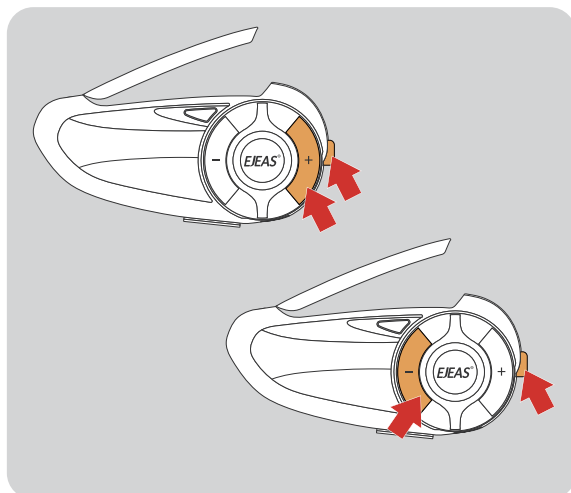


- 3 Short press the <Intercom Button>, you will hear a beep and the red light and green light will flash alternately.

Red light and green light flash alternately  
? "Du"

Wait a moment and hear "Pairing Successful" from all intercoms. Wait a few more minutes and hear "Channel n, xxx.x MHz". This means that you have joined the intercom network and can communicate with others.

## Intercom Channel Switching



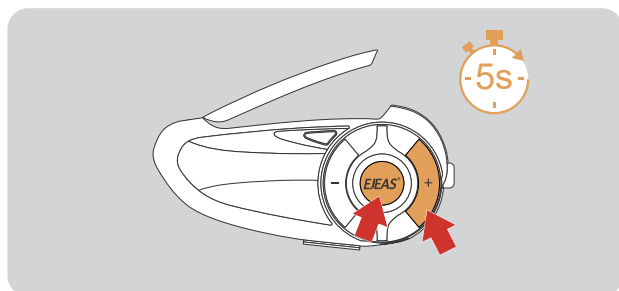
There are 5 channels in total, short press <Intercom Button> + <Volume ->/<Volume +> to switch channels forward or backward. Note that the whole team needs to keep the same channel to talk to each other.

When the signal is unstable, you can switch channels to adjust.

? "Channel n, xxx.x MHz"

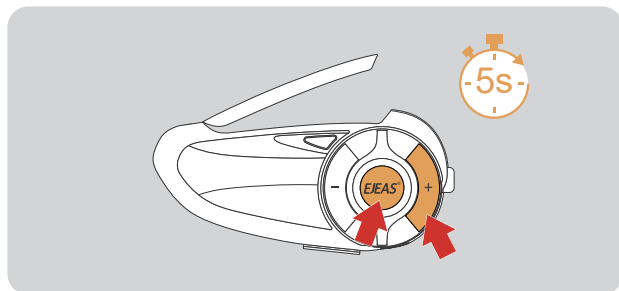
## Two-person Bluetooth Intercom

### How To Pair With The Device



- 1 After powering on the device, press and hold <Phone/Power Button> + <Volume +> (about 5s) until the red and blue lights flash alternately, and the pairing voice prompts "Intercom Pairing". Wait for connection to other intercoms.

Red light and blue light flash alternately  
? "Intercom Pairing"

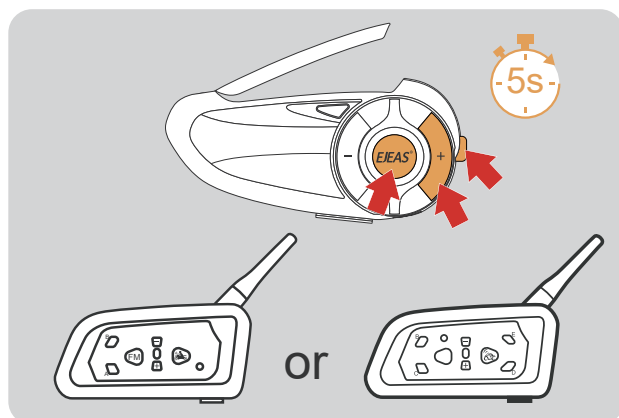


- 2 The other intercom enters the pairing state using the same operation. After the two intercoms discover each other, one of them will initiate the pairing connection.

The connection is successful and the intercom begins.

? "Pairing Successful"

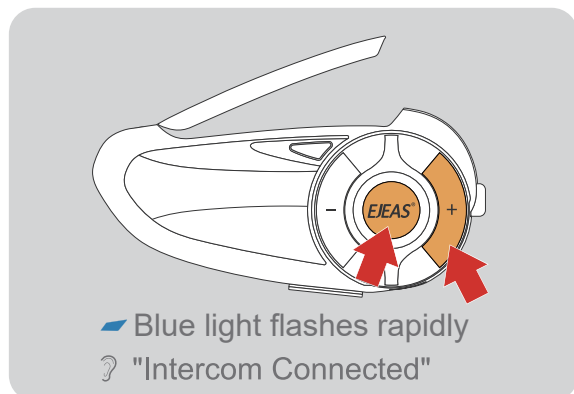
### Pairing with The Old Models



- 1 Simultaneously press and hold <Phone/Power Button> + <Volume +> + <Intercom Button> for approx. 5 seconds to start pairing (red and blue lights flash alternately).  
Red light and blue light flash alternately  
? "Intercom Pairing"

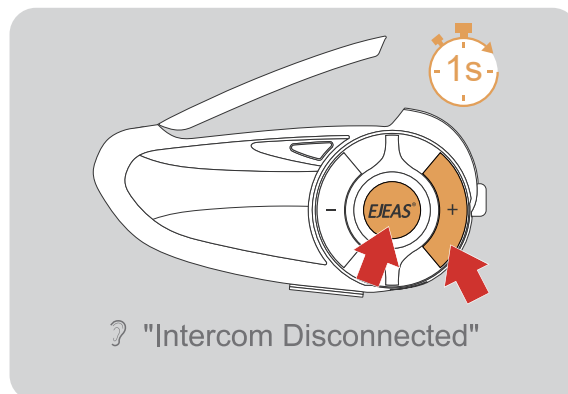
- 2 For older models (V6/V4) follow the instructions to enter the search and wait for successful pairing.

### Intercom Connection



Blue light flashes rapidly  
? "Intercom Connected"

### Intercom Disconnection

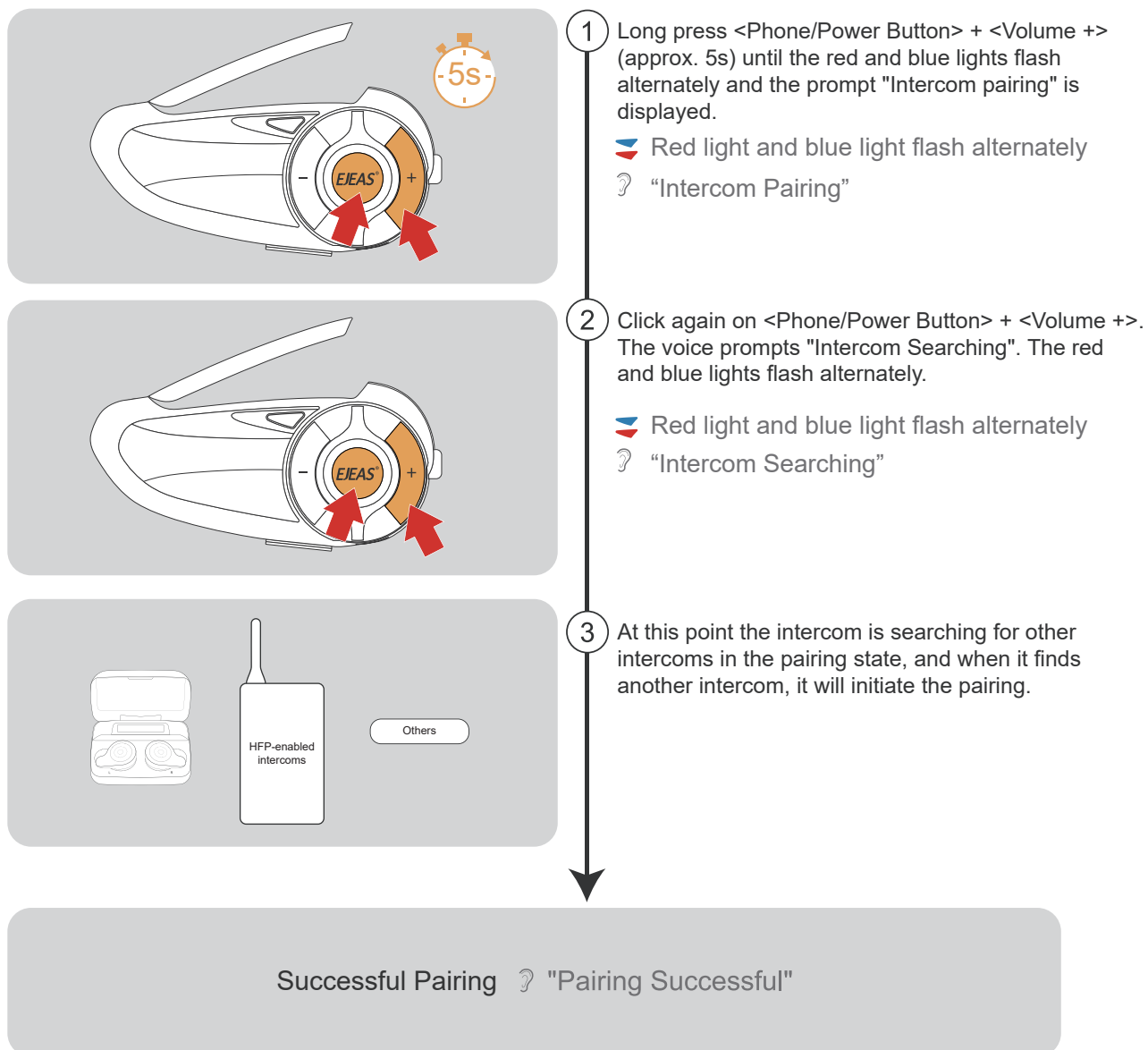


? "Intercom Disconnected"

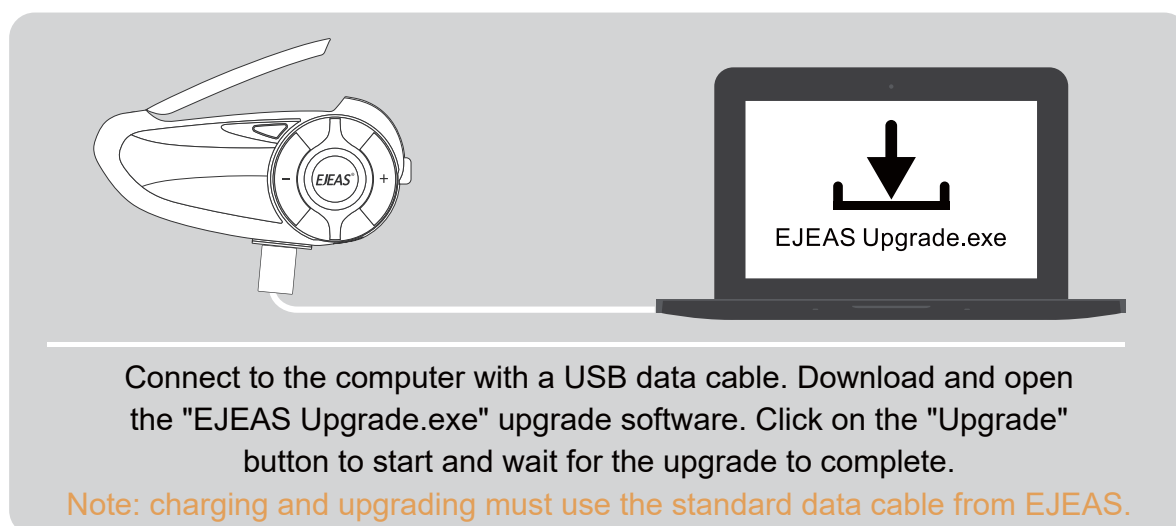


## Pairing With Headsets or Other Branded Bluetooth Intercoms Search

Note: It is not guaranteed to be compatible with all Bluetooth headsets or intercoms on the market.

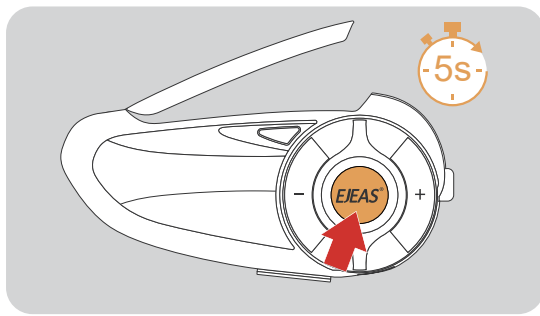


## Firmware Upgrades



## Mobile Phone Pairing

This intercom supports connection to mobile phones for playing songs, making calls, and waking up voice assistants. Up to 2 mobile phones can be connected at the same time.



1 After powering on the device, press and hold (approx. 5s) the <Phone/Power Button> until the red and blue lights flash alternately and the voice prompts "Phone Pairing".

Red light and blue light flash alternately  
? "Phone Pairing"



2 The phone searches for the device named "Q8" using Bluetooth. Click on it to connect.

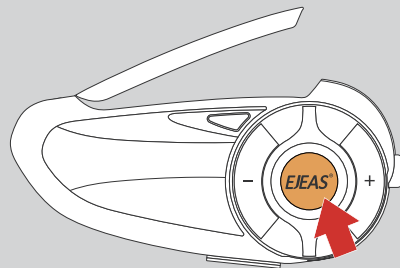
**Connection successful** Blue light double flashes slowly  
? "Pairing Successful, Connected"



Current battery level is displayed on the phone's Bluetooth icon  
(Mobile phone HFP connection required)

### Bluetooth Reconnection With Mobile Phones

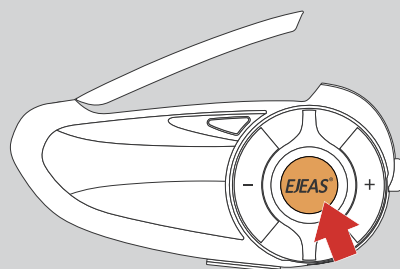
After switching on, it automatically connects back to the last connected phone Bluetooth. When there is no connection, click on the < Phone/Power Button > to reconnect with the last mobile device that was connected to Bluetooth.



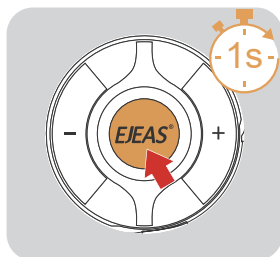
## Mobile Control

### Call Answering

When a call comes in, click on the <Phone/Power Button>

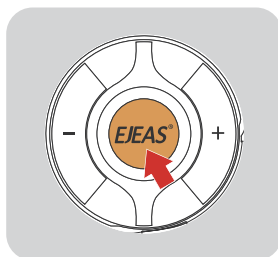


## Call Rejection



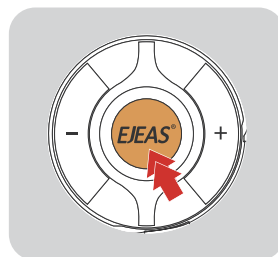
When a call come, press the <Phone/Power Button> for about 1s

## Hang Up



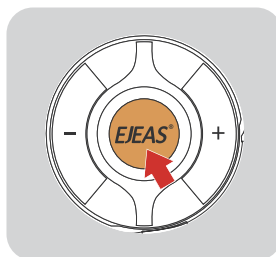
During a call, click on the <Phone/Power Button>

## Call Redial



When standby/playing music, quickly double-click the <Phone/Power Button>.

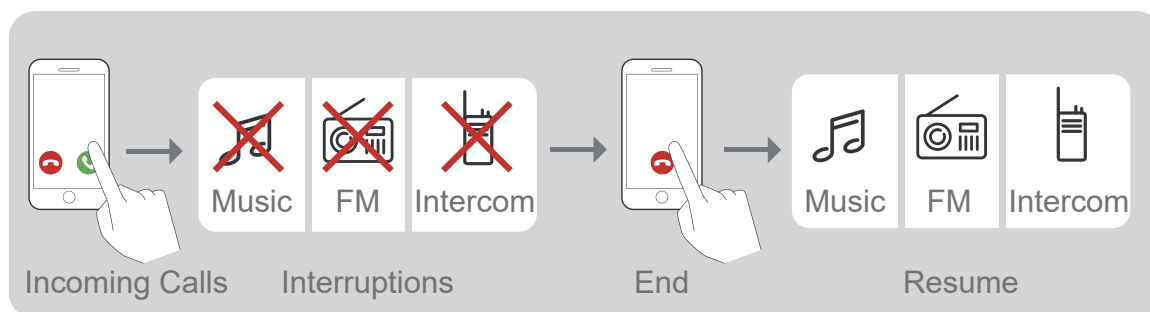
## Cancel Redial



During redial, click on <Phone/Power Button>

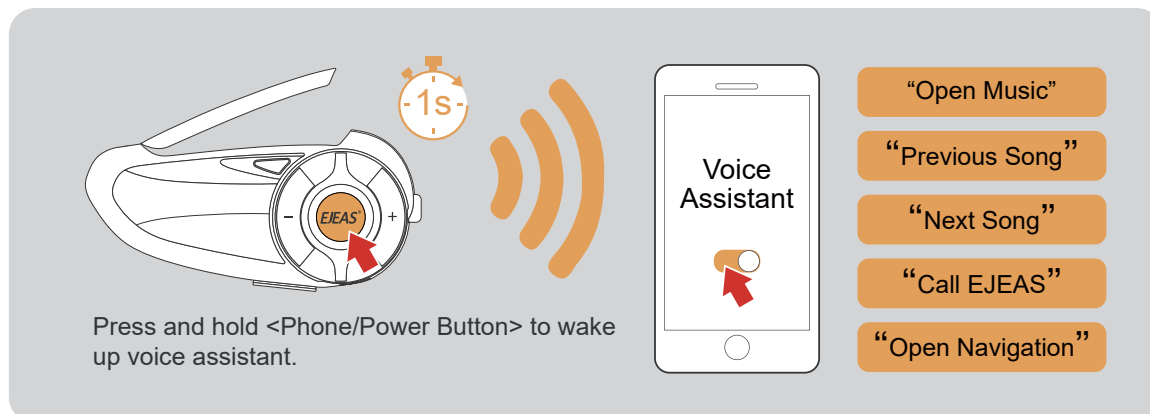
## Phone Priority

When a call comes in, it will interrupt Bluetooth music, FM radio, intercom, and resume after hanging up.



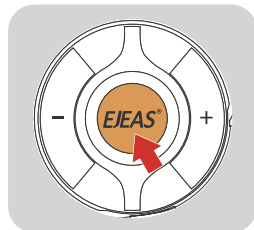
## Voice Assistant

When in standby/playing music, press and hold <Phone/Power Button>, it depends on your mobile phone.

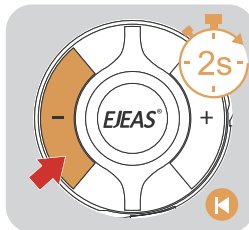


## Music Control

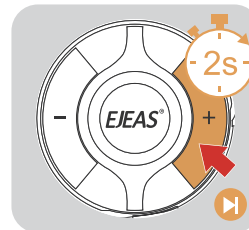
### Play/Pause



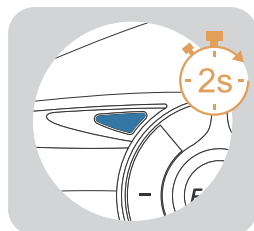
### Previous Song



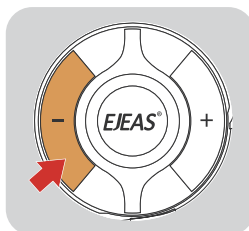
### Next Song



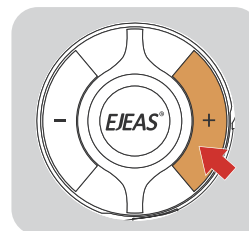
### Music Playing



### Volume -



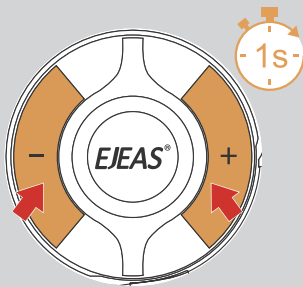
### Volume +



## FM Radio

### FM On/Off 76~108MHz

After turning on the FM radio, it will automatically search for stations and play the found station. FM can be turned on during the intercom, and you can listen to the radio while talking.



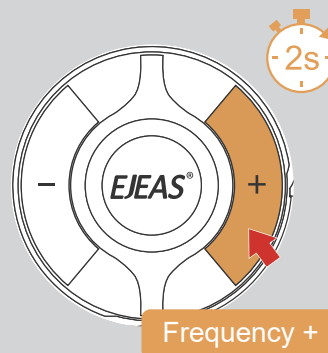
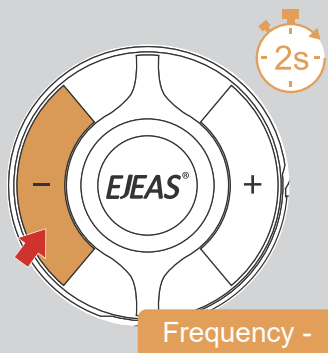
Press and hold <Volume +> + <Volume -> (approx. 1s). The prompt "FM Radio".

? "FM Radio"

Press and hold <Volume +> + <Volume -> (approx. 1s). The prompt "FM Radio Off".

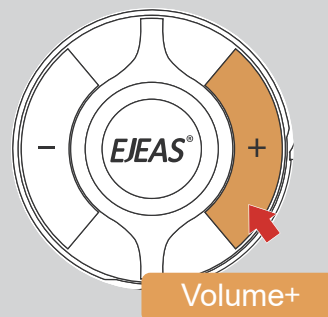
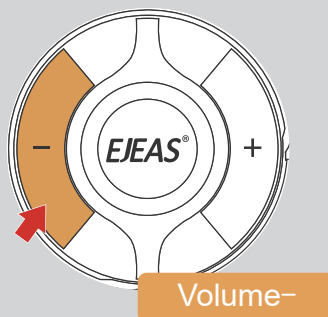
? "FM Radio Off"

### Switching Channels

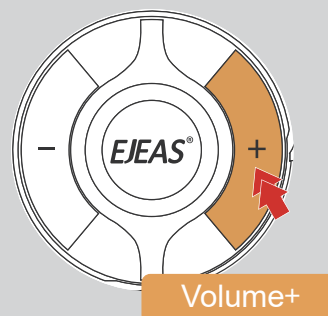
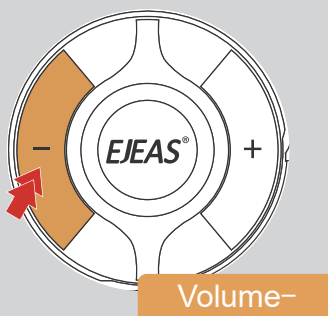


### Volume Adjustment FM with a total of 7 volume levels

When using FM alone



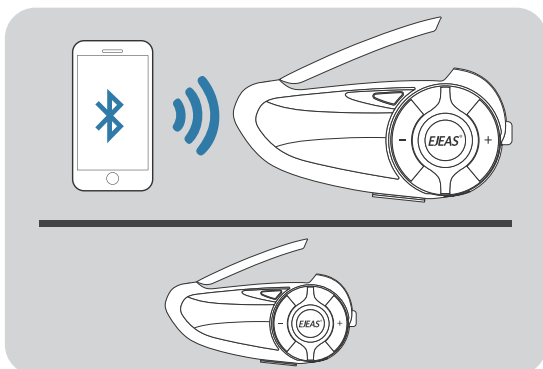
When FM + Intercom



## Music Share

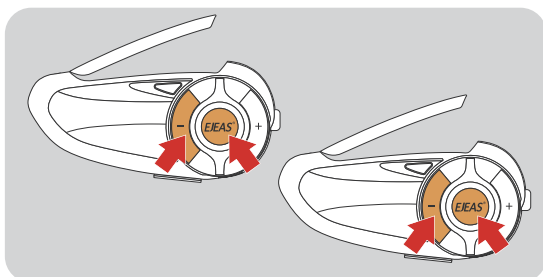
Share the music played by Bluetooth on your phone to another device, and this function cannot be used during Bluetooth intercom.

This function cannot be used when two phones are connected simultaneously.



1

Take an intercom as the host, connect it to the phone, and the other one is the slave.



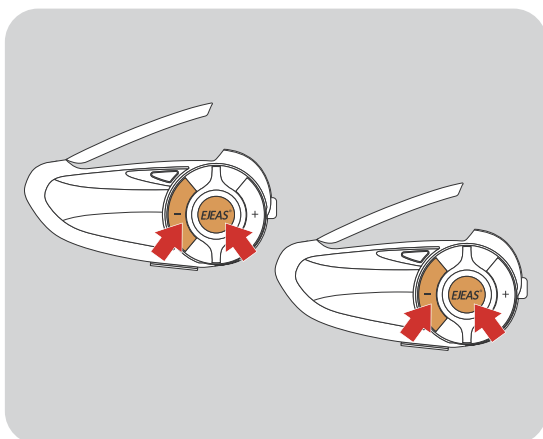
2

Press the <Phone/Power Button>+<Volume -> at the same time between the host and slave to enter the music sharing search connection state.

? "Music Share"

After the connection is successful, play the phone music of the host, and the music can also be played from the speaker.

? "Music Share Connected"



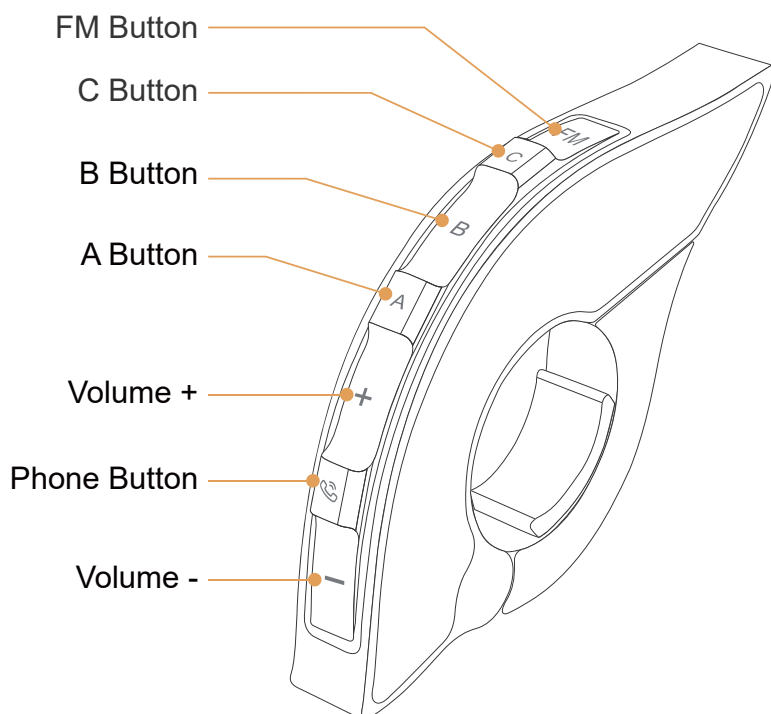
Press the <Phone/Power Button>+<Volume -> again to exit music sharing.

? "Music Share Disconnected"

## EUC Remote Controller (Optional)

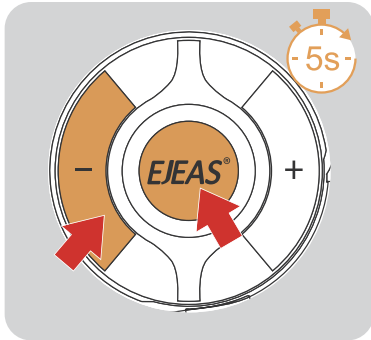
### Buttons Introduction

Buttons	Actions	Function
Volume +	Short press (Music Alone or FM Alone)	Intercom Volume +/- Music Volume +/- FM Volume +
	Long press	Next song when music is playing. Increase the frequency when FM is on
	Double click (Simultaneous Music and Intercom)	Intercom Volume +/- Music Volume +/- FM Volume +
Volume -	Short press (Music Alone or FM Alone)	Intercom Volume -/ Music Volume -/ FM Volume -
	Long press	Previous song when music is playing. Decrease the frequency when FM is on
	Double click (Simultaneous Music and Intercom)	Intercom Volume -/ Music Volume -/ FM Volume -
Phone Button	Short press	01. Answer a call when it comes in 02. On call, hang up 03. Music play/pause 04. When no mobile phone is connected Connect the last connected phone
	Long press	Reject calls Voice assistant
	Double click	Last number redial
A Button	Short press	01. Turn on mesh intercom 02. Mute/unmute microphone when mesh is connected
	Long press	None
	Double click	Switch VOX sensitivity during Mesh intercom
B Button	Short press	Turn off Mesh Intercom
	Long press	None
	Double click	None



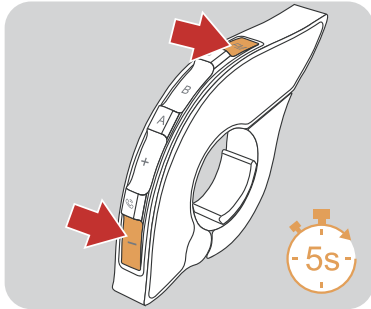
Buttons	Actions	Function
C Button	Short press	Initiate Bluetooth Intercom Connection
	Long press	Disconnect the intercom
	Double click	Music sharing start/end
FM Button	Short press	Turn FM on/off
Volume - + FM Button	Super Long Press	Clear handle pairing records

## EUC Pairing



- 1 Press and hold the <Phone/Power Button> + <Volume -> for about 5s to enter the pairing mode, the voice prompts "Remote Control Pairing", the red and blue lights flash alternately, if the pairing is not successful within 2 minutes, exit the pairing.

Red light and blue light flash alternately  
 "Remote Control Pairing"



- 2 Press and hold the < FM Button >+ < Volume - > on the handle for about 5s to clear the record until the red and blue lights come on.

Until the red and blue lights come on



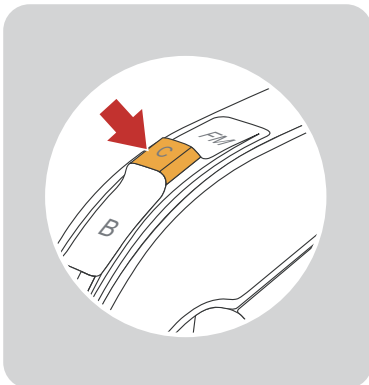
- 3 Click any button of EUC

Pairing Successful "Pairing Successful"  
 (No successful pairing within 2 minutes, exit the pairing)

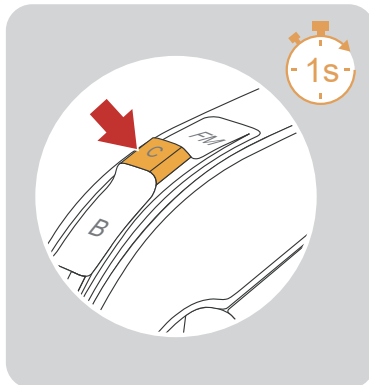
## EUC Handle Operation

Mesh intercom reconnect/disconnect and mobile phone control are the same as on the machine.

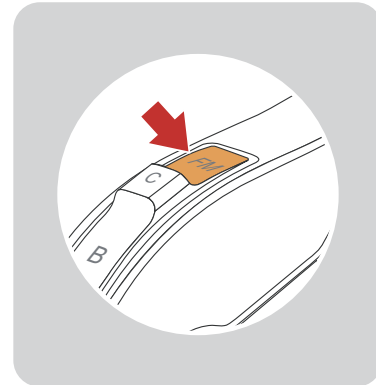
### Bluetooth Intercom Connection



### Bluetooth Intercom Disconnection



### FM On/Off



## Mobile App



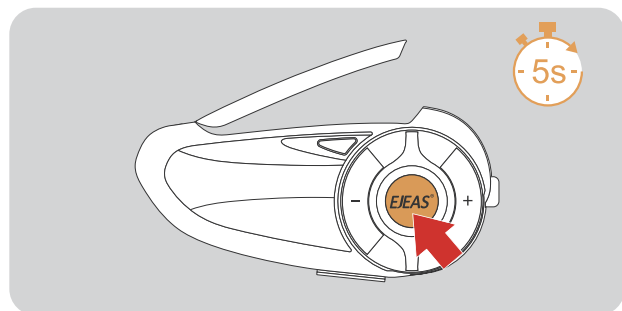
- 1 Download and install SafeRiding mobile APP for the first time.



iOS

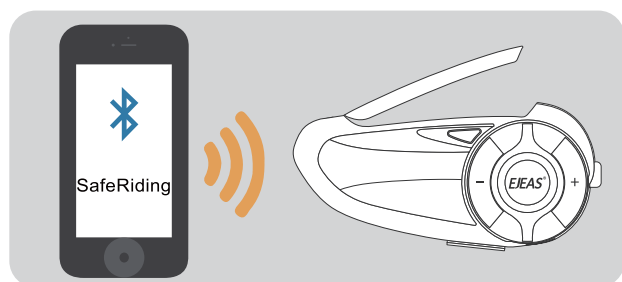


Andriod



- 2 Press and hold (approx. 5s) <Phone/Power Button> until the red and blue lights flash alternately to enter phone pairing.

Red light and blue light flash alternately

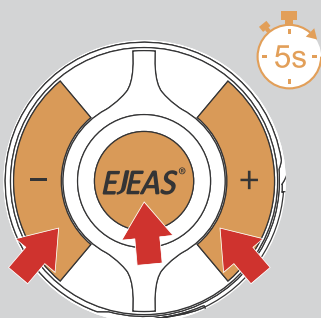


- 3 Open the APP, click on the Bluetooth icon in the top right corner, the interface shows the name of the intercom device searched, select the intercom device to be connected, click to connect. (IOS system need to enter the phone pairing again, in the system settings->Bluetooth, connect audio Bluetooth).

Open the APP the next time you use it. Click the Bluetooth icon in the top right corner and click to select Intercom for connection from the paired devices.

APP provides intercom group, music control, FM control, switch off, check authenticity and other functions.

## Restore Default Settings



Press and hold <Phone/Power Button> + <Volume +> + <Volume -> for about 5s, the voice prompts "Restore Default Settings" to delete the pairing record, and then automatically reboot the phone.

? "Restore Default Settings"



NOTE: This equipment has been tested and found to comply with the limits for a Class B digital device, pursuant to part 15 of the FCC Rules. These limits are designed to provide reasonable protection against harmful interference in a residential installation. This equipment generates, uses and can radiate radio frequency energy and, if not installed and used in accordance with the instructions, may cause harmful interference to radio communications. However, there is no guarantee that interference will not occur in a particular installation. If this equipment does cause harmful interference to radio or television reception, which can be determined by turning the equipment off and on, the user is encouraged to try to correct the interference by one or more of the following measures:

- Reorient or relocate the receiving antenna.
- Increase the separation between the equipment and receiver.
- Connect the equipment into an outlet on a circuit different from that to which the receiver is connected.
- Consult the dealer or an experienced radio/TV technician for help

Changes or modifications not expressly approved by the party responsible for compliance could void the user's authority to operate the equipment.

This device complies with Part 15 of the FCC Rules. Operation is subject to the following two conditions:

- (1) this device may not cause harmful interference, and
- (2) this device must accept any interference received, including interference that may cause undesired operation.