



Questions? Learn more at:

Des questions? Pour en savoir plus :

¿Tiene preguntas? Obtenga más información en:

Perguntas? Saiba mais em:

**[support.microsoft.com/PCAccessories](https://support.microsoft.com/PCAccessories)**

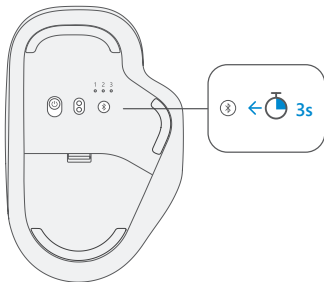
## Swift Pair

When you first turn on the mouse, it will go into pairing mode. For PCs that support Swift Pair\*, a notification will pop up in the lower right corner saying that your mouse has been found. Select **Connect**.

## Pairing manually

- 1 Press and hold the pair button for 3 seconds.  
The light will blink when it's ready to pair.
- 2 Open the Windows 10 **Start** menu, then select **Settings > Devices > Bluetooth & other devices > Add Bluetooth or other device > Bluetooth**.

Select **Bluetooth Ergonomic Mouse**.



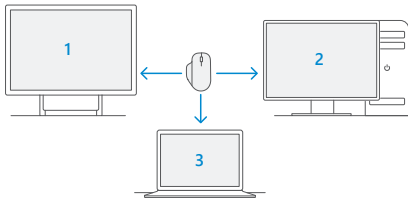
\*Swift Pair is available on Windows 10 with latest updates. For information about how to install latest updates to Windows 10, visit [aka.ms/updatewindows](https://aka.ms/updatewindows).

## Pair up to 3 devices

The lights on the bottom indicate which device is active. Press the pair button quickly to select a different device. Repeat the pairing steps from the previous page for each device.

### Smart Switch\*

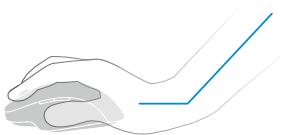
- 1 Go to **aka.ms/MouseAndKeyboard** and install Mouse and Keyboard Center\* on all your PCs.
- 2 In the Mouse and Keyboard Center, go to **basic settings** > **Smart switch** to customize the location of your PCs.
- 3 Switch between PCs by moving the mouse cursor from one screen to the next.



\*Not available for Windows 10 in S mode.

## Comfortable hand positioning

To use the mouse comfortably, keep your hand in line with your forearm and your wrist straight. Rest your hand on the mouse.



incorrect



correct

For important safety information, see the Product Guide. For more information about ergonomics, please visit [aka.ms/ergonomics](https://aka.ms/ergonomics).

**support.microsoft.com**

