

**SAMSUNG**

**SAMSUNG**

---

**VR05R50\*\*\*\* Series**  
INSTRUCTION MANUAL

---

English



**Rev 04**

Please keep this instruction manual carefully,  
and read it before operating

## Contents

<b>Safety Instructions</b>	<b>4</b>
<b>Product Introduction</b>	<b>6</b>
Illustration of Appliance	8
Introduction of Components	9
<b>Product Operation</b>	<b>10</b>
Installation	11
Appliance Charging	11
Introduction of Remote Control	12
Power ON/OFF	13
Clean/Pause	14
Mopping Operation	15
<b>APP Guide Line (POWERbot-E)</b>	<b>17</b>
<b>Product Maintenance</b>	<b>20</b>
Cleaning	20
Cleaning of Dust Bin and Filter	20
Cleaning of Water Tank	22
Cleaning of Sensor and Wheel	23
Cleaning of Charge Terminal	23
Cleaning of BrushRoll Assembly	24
<b>Trouble Shooting</b>	<b>26</b>
<b>Open Source Announcement</b>	<b>27</b>
<b>Specifications</b>	<b>28</b>
<b>Restore factory settings</b>	<b>29</b>

# SAFETY INSTRUCTIONS



When using an electrical appliance, basic precautions should always be followed, including the following:

READ ALL THE INSTRUCTIONS BEFORE USING (THIS APPLIANCE), Failure to follow the warnings and instructions may result in electric shock, fire and/or serious injury.

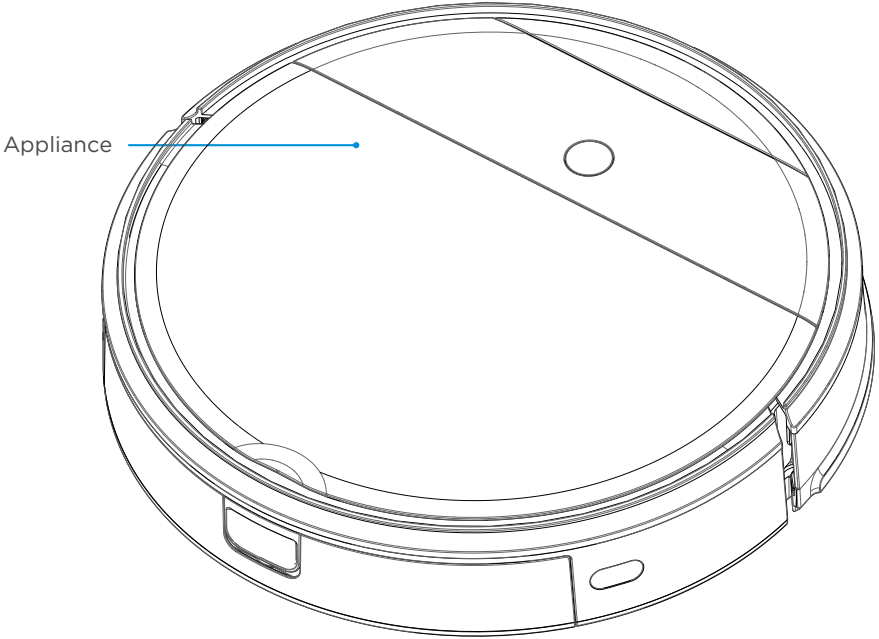
WARNING- To reduce the risk of fire, electric shock, or injury:

1. Do not use outdoors or on wet surfaces.
2. Do not allow to be used as a toy. Close attention is necessary when used by or near children, pets or plants.
3. Use only as described in this manual. Use only manufacturer's recommended attachments.
4. Do not use with damaged cord or plug. If appliance or docking station is not working as it should, has been dropped, damaged, left outdoors, or dropped into water, return it to a service center.
5. Do not pull or carry by cord, use cord as a handle, close a door on cord, or pull cord around sharp edges or corners. Do not run appliance over cord. Keep cord away from heated surfaces.
6. Do not unplug by pulling on cord. To unplug, grasp the plug, not the cord.
7. Do not handle charger, including charger plug, and charger terminals with wet hands.
8. Do not put any objects into openings. Do not use with any opening blocked; keep free of dust, lint, hair, and anything that may reduce air flow.
9. Keep hair, loose clothing, fingers, and all parts of body away from openings and moving parts.
10. Do not pick up anything that is burning or smoking, such as cigarettes, matches, or hot ashes.
11. Do not use without dust bin and /or filters in place.
12. Prevent unintentional starting. Ensure the switch is in the position before connecting to battery pack, picking up or carrying the appliance. Carrying the appliance with your finger on the switch or energizing appliance that have the switch on invites accidents.
13. Disconnect the battery pack from the appliance before making any adjustments, changing accessories, or storing appliance. Such preventive safety measures reduce the risk of starting the appliance accidentally.
14. Recharge only with the charger specified by the manufacturer. A charger that is suitable for one type of battery pack may create a risk of fire when used with another battery pack.
15. Use appliance only with specifically designated battery packs. Use of any other battery packs may create a risk of injury and fire.
16. When battery pack is not in use, keep it away from other metal objects, like paper clips, coins, keys, nails, screws or other metal objects that can make a connection from one terminal to another. Shorting the battery terminals together may cause burns or a fire.
17. Under abusive conditions, liquid may be ejected from the battery; avoid contact. If contact accidentally occurs, flush with water. If liquid contacts eyes, additionally seek medical help. Liquid ejected from the battery may cause irritation or burns.
18. Do not use a battery pack or appliance that is damaged or modified. Damaged or modified battery may exhibit unpredictable behavior resulting in fire, explosion or risk of injury.
19. Do not expose a battery pack or appliance to fire or excessive temperature. Exposure to fire or temperature above 130°C may cause explosion.

# CAUTION

20. Do not use and store in extremely hot or cold environments ( below 4°C or above 40°C). Please charge the robot in temperature above 4°C and below 40°C.
21. Follow all charging instructions and do not charge the battery pack or appliance outside of the temperature range specified in the instructions. Charging improperly or at temperatures outside of the specified range may damage the battery and increase the risk of fire.
22. Having servicing performed by a qualified repair person using only identical replacement parts. This will ensure that the safety of the product is maintained.
23. Do not modify or attempt to repair the appliance or the battery pack except as indicated in the instructions for use and care.
24. Place the cords from other appliances out of the areas to be cleaned.
25. Do not operate the vacuum in a room where an infant or child is sleeping.
26. Do not operate the vacuum in an area where there are lit candles or fragile objects on the floor to be cleaned.
27. Do not operate the vacuum in a room that has lit candles on furniture that the vacuum may accidentally hit or bump into.
28. Do not allow children to sit on the vacuum.
29. Do not use the vacuum on a wet surface.
30. Do not use the docking station if it is damaged.
31. Turn off the power switch before cleaning or maintaining the appliance.
32. The plug must be removed from the receptacle before cleaning or maintain the docking station.
33. Remove the appliance from the docking station and turn the power switch to the appliance before removing the battery for disposal of the appliance.
34. If the robot will not be used for a long time, fully charge the robot and power OFF for storage and unplug the charger.
35. For use only with VCA-RDS50 docking station.
36. This appliance is not intended for use by persons (including children) with reduced physical, sensory or mental capabilities, or lack of experience and knowledge, unless they have been given supervision or instruction concerning use of the appliance by a person responsible for their safety. Cleaning and user maintenance shall not be made by children without supervision.
37. Do not pour some water or liquid on the appliance. It could be increased the risk product breakaway or fire.
38. Do not use POWERbot near a heater or combustible materials.
  - Do not use POWERbot near fire or flame such as a movable heater, a candlelight, a desk lamp, a fireplace etc. or in a place where combustible materials such as gasoline, alcohol, thinner etc. exist.
39. Make sure there are no dangerous objects around the POWERbot's cleaning area to prevent collision and unplug any electric heaters or fans.
40. Do not use POWERBOT on black colored floors.
  - The POWERBOT may not be able to operate normally.

Product Introduction



Cleaning brush



Instruction file



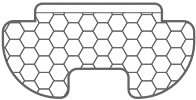
Remote control



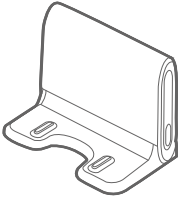
AAA Batteries



Power cord

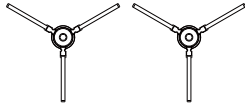


Mop attachment

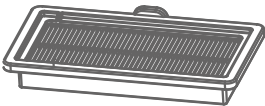


Docking station

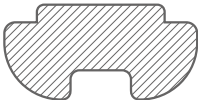
\* Optional



\* Side Brush  
( VR05R5050\*\* : X4 )  
( VR05R503P\*\* : X2 )



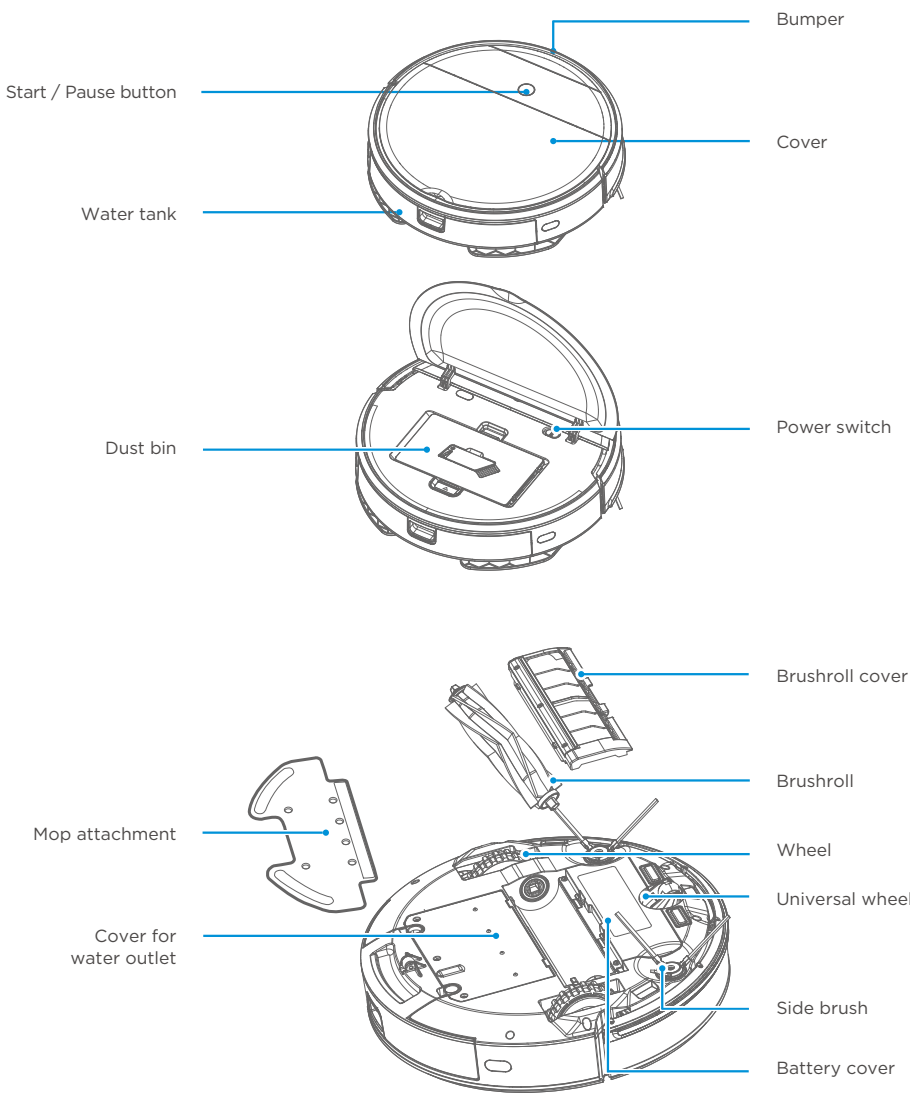
\* Spare Filter  
( VR05R5050\*\* : O )  
( VR05R503P\*\* : X )



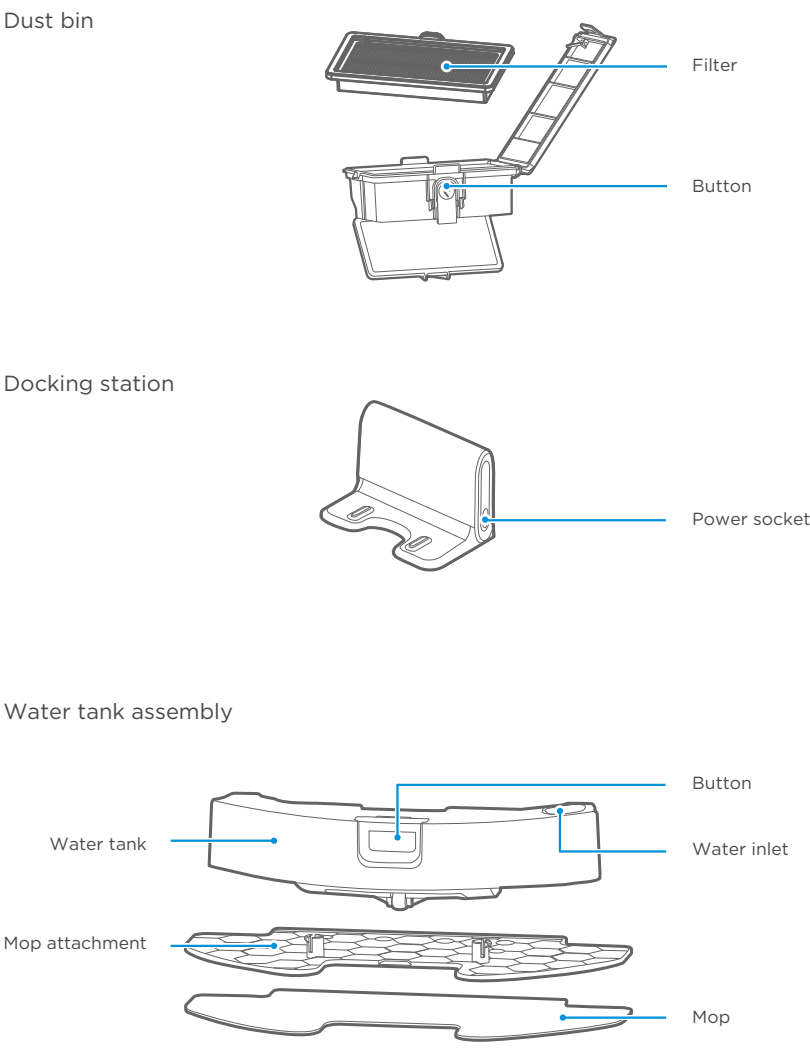
\* Mop  
( VR05R5050\*\* : X2 )  
( VR05R503P\*\* : X1 )

Product Introduction

Illustration of Appliance



Introduction of Components



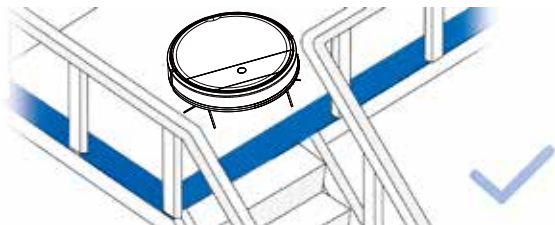
## Product Operation

### ⚠ Caution

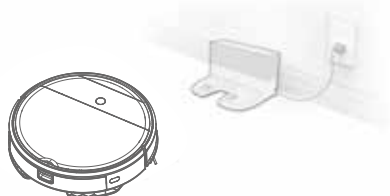
1. Do not use your robot on wet surfaces or surfaces with standing water. Before using the product on a rug with tasseled edges, please fold the rug edges under.



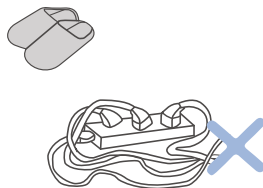
2. It may be necessary to place a physical barrier at the edge of a drop to stop the unit from falling over the edge.



3. Remove power cords and small objects from the floor that the robot could be obstructed by, and tidy up the area to be cleaned by putting furniture, such as chairs, in their proper place.

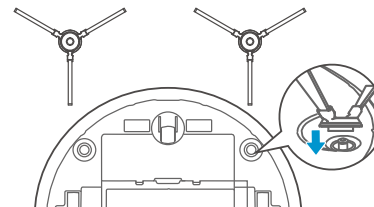


4. Please remove all the stuff on the floor, like slipper, cord, curtain, etc. to make sure the robot works regularly.

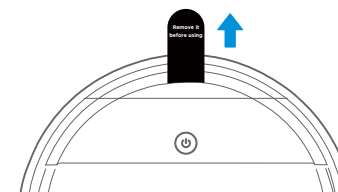


## Installation

Push the side brush directly into the conver shaft of the base of side brush.

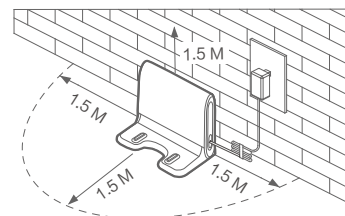


Please remove a "White bumper gasket" before using.

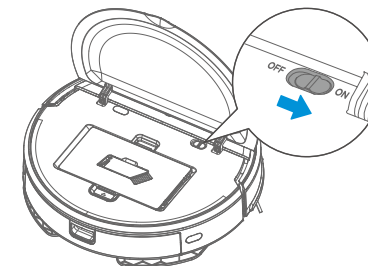


## Appliance Charging

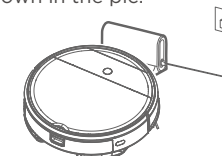
- 1 Put the docking station well: Place the docking station against a wall and remove all of obstructions around the docking stand, as shown in the figure below.



- 2 Switch the power on after open the cover.



- 3 Place the appliance on the docking station, as shown in the pic.



### ⚠ Caution

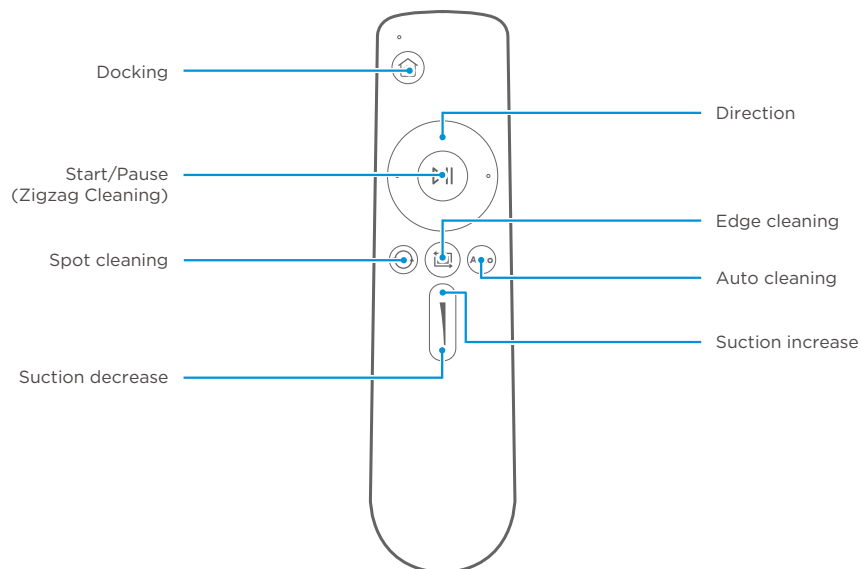
- a. When charging, white light of button flashes at intervals of two seconds;
- b. When the charging is completed, the white light of button is always on;
- c. When the battery is low power in standby mode, and the red light flashes;
- d. When the battery is low power in the working mode, the appliance will automatically find the docking station for charging;
- e. When charging, empty the water tank and remove the mop attachment.

## ⚠ Caution

To effectively extend battery life, you should:

- For the first use, please charge for 12 hours;
- When the battery is low power, please charge it as soon as possible;
- If you do not use the appliance for an extended period of time, fully charge the battery and put it in a ventilated and dry place;
- If the appliance is not used for more than 3 months, charge the appliance for 12 hours.

## Introduction of Remote Control



- 1 Docking**: When in standby or working mode, appliance will return docking station for charging.
- 2 Direction**: Controlling the moving direction by forward/left/right key.
- 3 Start/Pause (Zigzag Cleaning)**: When in standby mode,appliance start working or pause with zigzag cleaning.
- 4 Spot cleaning**: Start to cleaning by Spiral mode in certain zone.
- 5 Edge cleaning**: Cleaning by the edge of obstacle.

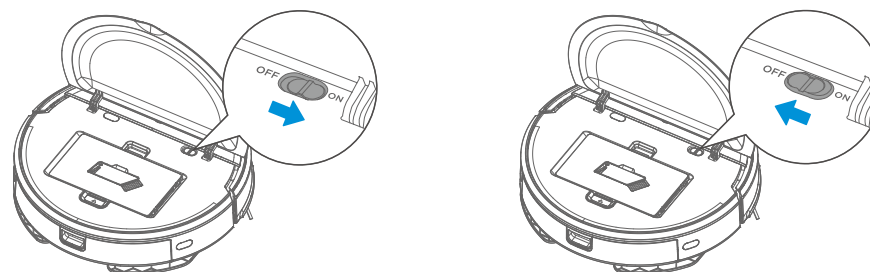
- 6 Auto cleaning**: The robot will clean randomly.
- 7 Suction increase**: Increasing the suction power.
- 8 Suction decrease**: Decreasing the suction power.

## ⚠ Caution

- Place the battery in remote control before using;Take battery off if not used for a while.
- In case of safety,there's no backward direction fuction.
- Please operate the remote control within 5m to appliance.

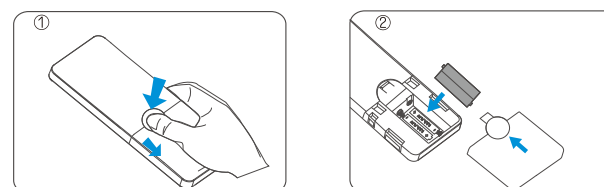
## Power ON/OFF

- 1 Power on**: Open the cover, power on by turning the power switch to "ON", and then press the start button, the indicator lights up .
- 2 Power off** (when not be used for a long time): Power off the appliance by turning the power switch to "OFF" and the light goes out .



## Insert batteries

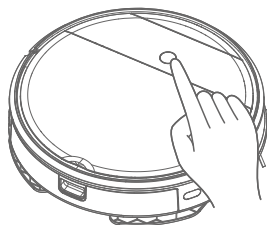
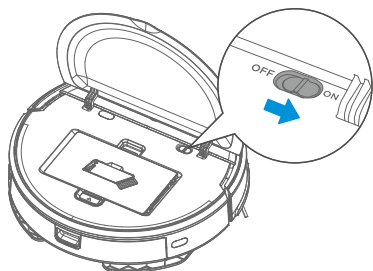
Open the battery cover by lifting it while pressing the locking tab and insert the batteries as shown in the illustration. Then close the cover until it clicks into place.



## Clean/Pause

### Clean

- 1 Make sure the power switch is in the "ON" position;
- 2 In standby mode, press the "⏻" key to start zigzag cleaning

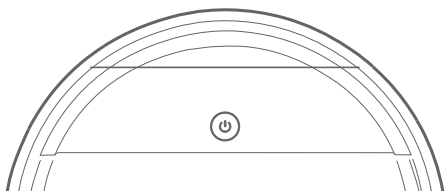


### ⚠ Caution

If the appliance is in sleep state, press the "⏻" key and switch the appliance from sleep to pause, and press it again to start cleaning.

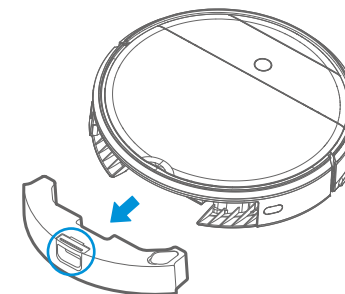
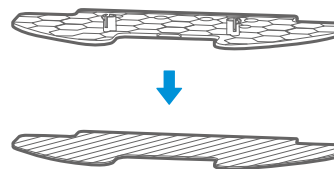
### Pause

Standby means that the power supply is on, waiting for the user to operate, and the appliance enters into the PAUSE by pressing the "⏻";

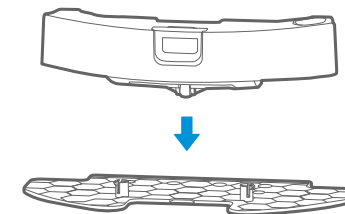
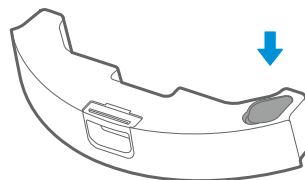


## Mopping operation

- 1 Attach the mop to the mop attachment.
- 2 Press the button on tank and remove the tank.



- 3 Fill the water.
- 4 Mount the water tank onto the mop attachment.

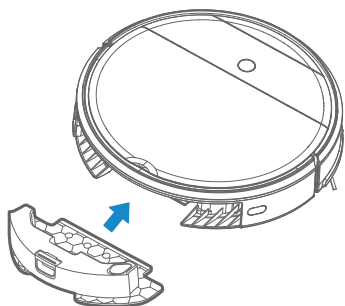


### ⚠ Caution

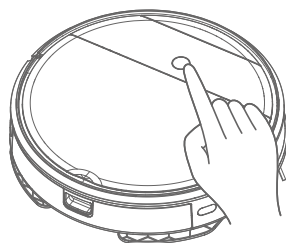
- a. Do not input any chemical detergent and cleaner.
- b. Use only water.



- 5 Then insert the water tank assembly into the appliance.



- 6 Press “⏻” and start mopping.



#### ⚠ Caution

1. Do not use mop tank assembly on the carpet.
2. It is recommended to fill in 80% water for the first time to ensure better seepage and mopping efficiency (only for the first time).
3. If it is not necessary to mop the floor, be sure to remove the water tank and mop cloth assembly or pour out the water in the water tank.
4. It is not recommended to carry out wet-mopping operation with water tank on wooden floor when unattended in order to avoid damage to the wooden floor due to excessive water.
5. It is recommended to use pure water to avoid water quality problems affecting the water discharging of the tank.

#### Remark

- a. It will take 5-10 minutes until the dry mop is wetting.  
→ Wet the mop with water before using
- b. The amount of water can be controlled in the POWERbot-E App

## APP Guide Line (POWERbot-E)

### App quick guide

### Network access guide

#### Step 1

Search “POWERbot-E” in APPLE App Store or Google Play Store, and download the App. Follow the instructions on the interface to register and login App.



#### NOTE:

SmartThings is incompatible with tablets and some mobile devices.  
- Android 6.0 or later (at least 2GB of RAM) is recommended.  
iPad and some mobile devices may not be supported.  
- iOS 10.0 or later / iPhone 6 or later is supported.  
Visit Play Store or App Store to see if your mobile device is compatible with SmartThings.  
The supported features are subject to change without any prior notice.

#### Step 2

Click “+ Add Device” on the interface and operate as instructed.



#### Step 3

When first using, slow flickering of WiFi indicator light indicates that the cleaner gets into the state of network accessing configuration, now click “Next Step” on App and conduct network accessing config operation as per the prompts on the interface.

Remarks: If WiFi indicator light doesn't flicker, long press “⏻”key for 3 seconds and release after a tick sound is heard.



## APP Guide Line (POWERbot-E)

### App quick guide

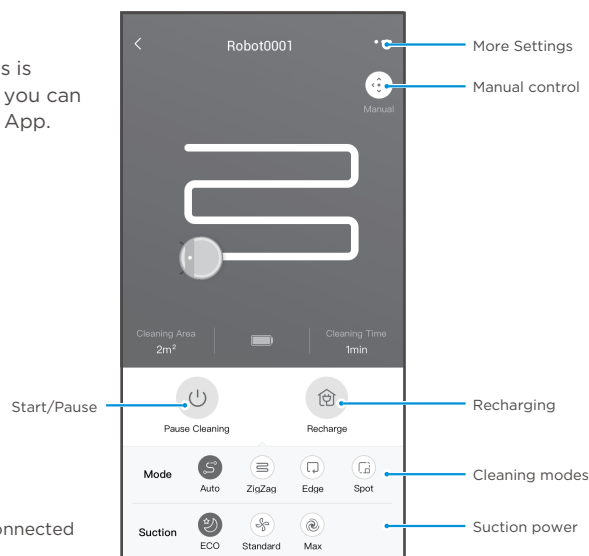
#### Step 4

Once the network access is configured successfully, you can operate your cleaner by App.

#### Caution

Make sure your phone is connected to home WiFi.

### Network access guide



#### Setting up the wireless router

- Samsung POWERbot-E supports only Wi-Fi 2.4 Ghz.
- Samsung POWERbot-E supports IEEE 802.11b/g/n and Soft-AP.
  - IEEE 802.11n is recommended.
- Samsung POWERbot-E supports only DHCP (Dynamic Host Configuration Protocol). Please make sure that the DHCP server option is activated on your wireless router.
- POWERbot-E supports the WEP-OPEN, WPA-PSK/TKIP, and WPA2-PSK/AES for the authentication and encryption protocols.
  - WPA2-PSK/AES is recommended.
  - Confirm that your router has a unique SSID and password.
- The quality of your wireless network connection may be influenced by the surrounding wireless environment.
- If your Internet service provider has permanently registered the MAC address (a unique identification number) of your PC or modem, your POWERbot-E may not be able to connect to the Internet. Ask your Internet service provider about the procedure to connect an apparatus other than a PC to the Internet.
- If your internet service provider requires your ID or password to connect to the internet, your POWERbot-E may not be able to connect. If this is the case, you must enter your ID or password when connecting to the Internet.
- The POWERbot-E may not be able to connect to the Internet because of firewall issues. Contact your Internet service provider to resolve these issues.
- Some wireless routers may transmit an abnormal Domain Name Server (DNS) address even if the Internet is not connected. If this occurs, contact the manufacturer of your wireless router and your Internet service provider.
- If you still cannot connect to the Internet even after trying the procedure provided by your Internet service provider, please contact an authorized Samsung service center.
- If your router is not a Wi-Fi certified product, The POWERbot-E may not be able to connect to the Internet.

## APP Guide line(SmartThings)

If you want to use your SmartThings App to control the robot.

STEP 1. Finish the POWERbot-E App registration.

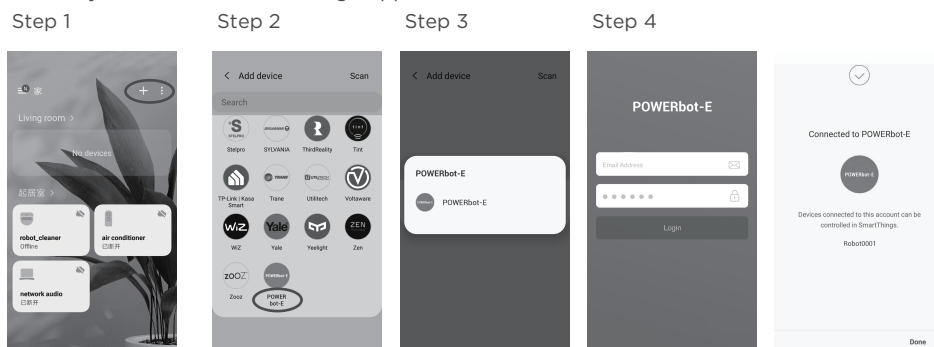
STEP 2. Download the SmartThings App, search "SmartThings" in APPLE App store or Google Play Store and download.

- You must sign in to a Samsung account before using the SmartThings app.

- To set up a Samsung account, you can follow the directions provided by the SmartThings app.

STEP 3. Register in the SmartThings App and login in.

STEP 4. Link the SmartThings App and POWERbot-E App as below instruction, and then can control your robot via SmartThings App.



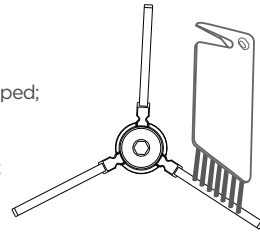
#### Setting up a Samsung account

- You must sign in to a Samsung account before using the SmartThings app.
- To set up a Samsung account, you can follow the directions provided by the SmartThings app.
  - Or, if you have a Samsung smartphone, you can add your Samsung account in the setting app of your smartphone. Then, it will automatically sign in to your Samsung account.
- Adding a device to the SmartThings APP
- Connect your smartphone to your wireless router.
  - If the smartphone is not connected, turn on the Wi-Fi in the Settings App and select a wireless router you want to connect to.
  - Disable the "Mobile data" use option of a smartphone to use Wi-Fi only and connect a device.
- Launch the SmartThings app on your smartphone.
- If a pop-up saying that a new device has been found appears, tap ADD NOW.
  - If the pop-up doesn't appear, tap the + button and select the device which you want to connect from the list of AVAILABLE DEVICES.
  - If your device doesn't appear in the list, add the device manually by selecting the device type and selecting the specific device model.
- [Android] The connection to your device will be progressed automatically.
  - [iOS] Open the setting app, and select POWERbot-E in the Wi-Fi list.
- Provide the authentication when you are directed to do so.
- [Android] The connection to your wireless router will be progressed automatically.
  - [iOS] Open the setting app, and select the wireless router in the Wi-Fi list.
- The remaining setup will be automatically done. Then, a new Device Card will be added.

## Product Maintenance

### Cleaning

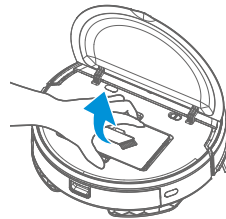
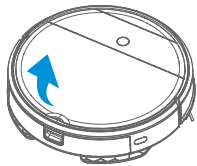
- 1 Check whether the side brush is damaged or has wrapped;
- 2 Clean the side brush with a cleaning tool or a rag;
- 3 If curl or deformation occurs, remove the side brush and put it in warm water for about 5 seconds;
- 4 When the side brush is damaged and cannot be used, please replace as soon as possible.



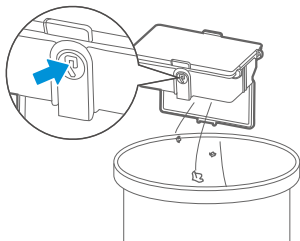
### Cleaning of Dust Bin and Filter

The steps are as follows

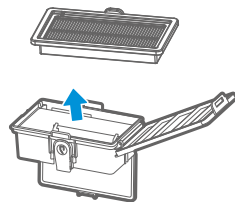
- 1 Open the cover by lifting the mark “▽” on the cover with fingers;
- 2 Take out the dust bin;



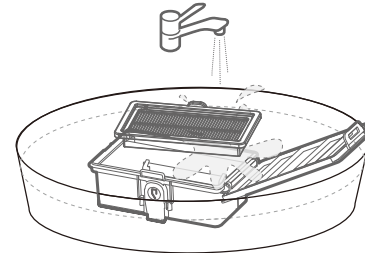
- 3 Press a button to empty trash in the dust bin;



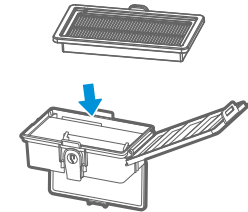
- 4 Take out the filter;



- 5 Clean the dust bin and filter by water;



- 6 Insert the filter into the dust bin.

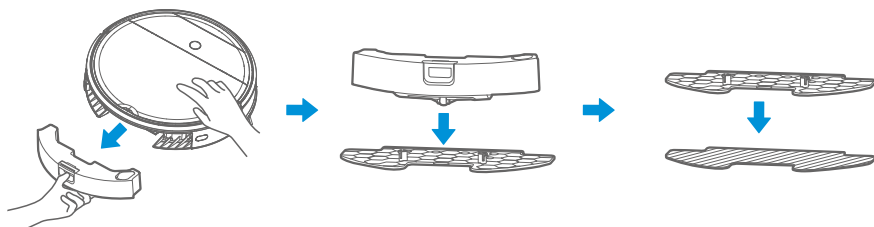


### Caution

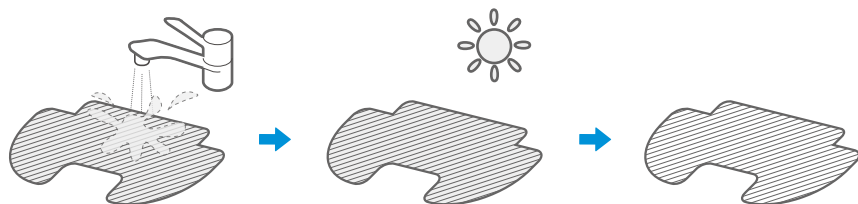
1. It is recommended to wash it when the filter is blocked.  
If you want to buy the accessories, please contact a Samsung Electronics service center.
2. Before installation, make sure that filter is in a dry condition.
3. Empty the dust bin after each use.

## Cleaning of Water Tank

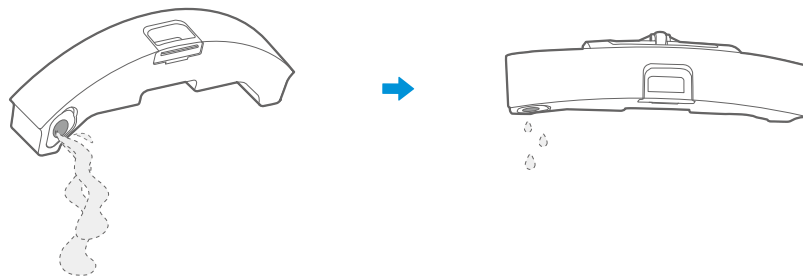
- 1 After the floor is mopped, pull out the water tank assembly from the rear of the main unit and remove the mop attachment and mop.



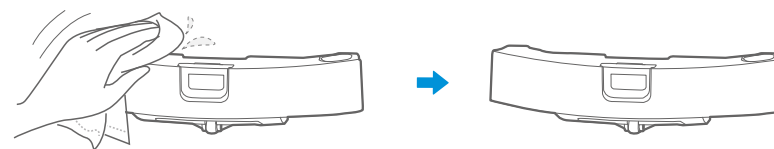
- 2 Wash mop, and leave it dry;



- 3 After the floor is mopped, pour the remaining water in the tank.

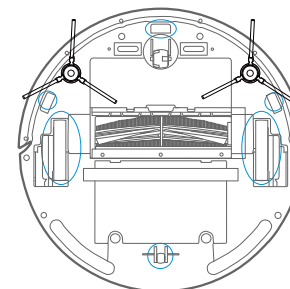


- 4 Wipe the water tank and leave it dry. Sunlight exposure is not allowed.



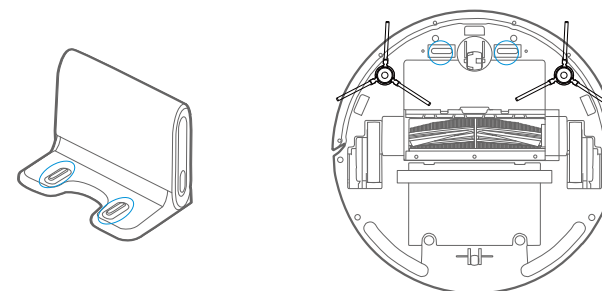
## Cleaning of Sensor and Wheel

- 1 Wipe the sensor and the wheel gently with a cleaning tool or a soft cloth, as shown in the figure below.



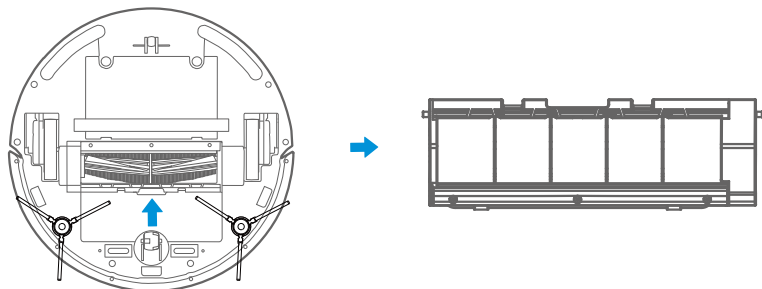
## Cleaning of Charge Terminal

- 1 Clean the charging base and the charging terminal on the appliance with a cleaning tool or a soft cloth, as shown in the figure below.

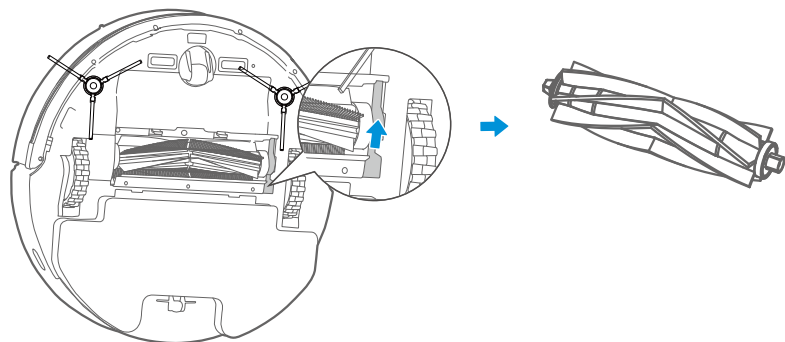


## Cleaning of Brushroll Assembly

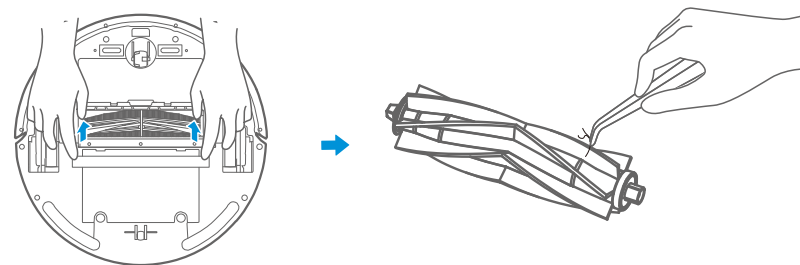
- 1 Take the brushroll cover down.



- 2 Open the brushroll block upwards and remove brushroll.



- 3 Clean the brushroll bar and brushroll cover with a cleaning tool or a soft cloth.  
(brushroll can be washed with water)



### ! Caution

After the brushroll is completely dry, install it again as per the original disassembly and assembly sequence.

## Trouble shooting

In case of mis-function, please refer to the following table.

Problem	Possible reason	Solution
The appliance will not be charged	<ul style="list-style-type: none"> <li>- The power switch is not turned on while charging</li> <li>- The appliance and charging terminals are not in full contact</li> </ul>	<ul style="list-style-type: none"> <li>- Power on the appliance</li> <li>- Make sure the appliance is fully in contact with the charging terminal</li> </ul>
The appliance gets stuck	<ul style="list-style-type: none"> <li>- The appliance is covered by wires on the ground, dropping curtain fabric or blankets are twined</li> <li>- Side brush and brushroll, etc. get stuck, and the appliance cannot run normally</li> </ul>	<ul style="list-style-type: none"> <li>- The appliance will automatically start the escape mode. If it is not out of trouble, it needs manual help</li> <li>- Clean the windings on the side brush and restart it. If not, contact the after-sales department</li> </ul>
Not cleaned completely, and robot goes to recharge	<ul style="list-style-type: none"> <li>- Robot battery is lower than 20%, and it automatically back to recharge</li> <li>- Robot cleans a certain place and is considered as "Cleaning finished"</li> </ul>	<ul style="list-style-type: none"> <li>- Charge the appliance</li> <li>- Restart the appliance and choose the "auto" cleaning mode to start the cleaning that may be more appropriate for your home layout</li> </ul>
No cleaning according to the preset time	<ul style="list-style-type: none"> <li>- The power switch is not on</li> <li>- Scheduled appointment is cancelled</li> </ul>	<ul style="list-style-type: none"> <li>- Turn on the power switch of appliance</li> <li>- Reset and make appointment</li> </ul>
After the mop attachment is installed, the appliance is impermeable	<ul style="list-style-type: none"> <li>- The mop holder magnet falls off</li> <li>- There's no water in water tank</li> <li>- The appliance base outlet hole is blocked</li> </ul>	<ul style="list-style-type: none"> <li>- Contact the aftersales service center</li> <li>- Add water</li> <li>- Clear water outlet and tank filter</li> </ul>
Appliance does not work	<ul style="list-style-type: none"> <li>- The power switch is not turned on</li> <li>- Low battery</li> <li>- wheels are dropped and the three groups of drop sensors are in a falling state</li> </ul>	<ul style="list-style-type: none"> <li>- Turn on the power switch</li> <li>- Charge the appliance</li> <li>- Place the appliance close to the ground</li> <li>- Contact aftersales service center</li> </ul>
Appliance retreats	<ul style="list-style-type: none"> <li>- There's obstacle ahead</li> <li>- Bumper rail is clamped</li> </ul>	<ul style="list-style-type: none"> <li>- Clear the front obstacles</li> <li>- Tap the bumper rail to check for if there's foreign matter stuck</li> </ul>
The appliance restart sometimes.	<ul style="list-style-type: none"> <li>- This is a symptom caused by instantaneous discharge of static electricity caused by carpet.</li> </ul>	<ul style="list-style-type: none"> <li>- The appliance will be normal if it restart within 3 seconds</li> </ul>
Keep hitting obstacles.	<ul style="list-style-type: none"> <li>- When detecting an obstacle, reduce the speed and clean it in close proximity until it touches the obstacle.</li> </ul>	<ul style="list-style-type: none"> <li>- It's normal.</li> </ul>
It may bump into furniture and obstacles on moving.	<ul style="list-style-type: none"> <li>- It try to clean near furniture and obstacles so that it can bump into them.</li> </ul>	<ul style="list-style-type: none"> <li>- It's normal.</li> </ul>

## Trouble shooting

In case of mis-function, please refer to the following table.

Problem	Cause	Troubleshooting	Solution
App displays disconnection	Disconnection between the mobile phone and the equipment	<ul style="list-style-type: none"> <li>- Judge if the mobile phone is accessed to network</li> <li>- Judge if the router works normally</li> <li>- The cleaner is required to be powered</li> <li>- The WiFi configurations of the equipment are cleared</li> <li>- The WiFi password or network is changed</li> </ul>	<ul style="list-style-type: none"> <li>- The mobile phone shall be accessed to network once again</li> <li>- Re-start the router</li> <li>- Power on the cleaner once again</li> <li>- Add new appliances into App</li> <li>- After system start-up, long press "⏻" 3 seconds and release it after a tick sound is heard</li> <li>- Clear all WiFi configurations of the cleaner and add household electrical appliances once again for operation</li> </ul>
Slow App operation	Network connection is not so smooth	<ul style="list-style-type: none"> <li>- Network busy</li> <li>- Poor WiFi signal reception of the mobile phone</li> <li>- The network bandwidth is not so adequate</li> </ul>	<ul style="list-style-type: none"> <li>- Re-start the router and reduce the number of access users</li> <li>- Check the settings of the mobile phone itself</li> <li>- Broaden network bandwidth</li> </ul>

## Open Source Announcement

The software included in this product contains open source software.

The following URL [http://opensource.samsung.com/opensource/VR\\_5000\\_M/seq/0](http://opensource.samsung.com/opensource/VR_5000_M/seq/0) leads to open source license information as related to this product. This offer is valid to anyone in receipt of this information.



Specifications

Classification	Item	Detail information
		VR05R50**** Series
Mechanical specifications	Size(D*H*L)	340mm*85mm*340mm
	Weight	3.0kg
	Navigation System	Random(Zigzag)
	Obstacle Sensor	IR Sensor
Power specifications	Power voltage	100-240V,50/60Hz
	Battery specifications	14.4V/3.4Ah Li-ion
	Suction	5W
Cleaning	Charging type	Automatic charging/Manual charging
	Cleaning mode	Zigzag, Auto, Spot, Edge, Mopping
	Schedule	One-time, Daily, Multi-time
	Charging time	Approximately 240min
	Cleaning time(based on the hard floor)	Max mode Approximately 60min
		Standard mode Approximately 80min
		ECO mode Approximately 150min
Wi-Fi	Frequency Range	2412-2472MHz
	Transmitter Power(Max)	20dBm

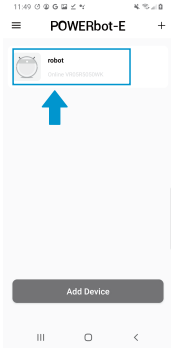
\* You can set the schedule function via App.

\* Charing time and cleaning time may differ according to the use of conditions.

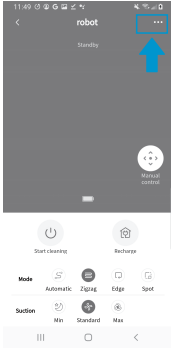
Restore factory settings

1. Tap the device to go to the plug-in page.
2. On the plug-in page, click the icon in the upper right corner to enter the Settings page.
3. In the Settings page, you can see the restore Factory Settings portal, named "Factory reset".

Step 1



Step 2



Step 3

