



CONTROL **400**

CEILING SPEAKER FAMILY



Full-Spectrum Ceiling Speakers
for Every System Solution

CONTROL 400

CEILING SPEAKER FAMILY



Next Generation Ceiling Loudspeakers

The JBL Control 400 Family consists of three distinct ranges, allowing you to choose the balance of cost and coverage performance that's best for your application. Every model provides high-quality JBL sound, unmatched reliability, helpful installation features, and a contemporary design aesthetic.



▲ Optional White Square and Black Round Grilles Available



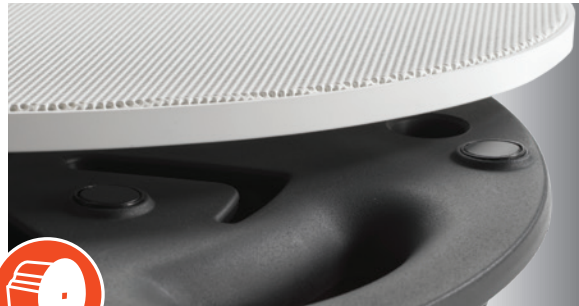
**STANDARD
COVERAGE
SERIES**



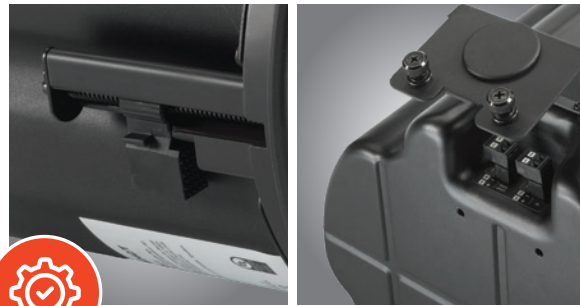
**ENHANCED
COVERAGE
SERIES**



**PREMIUM
COVERAGE
SERIES**



Full-face magnetic grilles for modern decors



Optimized for efficient and reliable installation



Multiple low-profile models

CONTROL400

STANDARD COVERAGE SERIES



Smart Upgrades.
Smooth Installs.

The JBL Control 400 Standard Coverage Series brings high-performance audio to accessible price points. Evolving the iconic Control 10 Series, they offer enhanced sound quality, unmatched reliability, installer-friendly features, and a sleek, modern design.



EN54-24 Life Safety Certified

Control 400 Standard Coverage Series VA models meet EN54-24 life safety certification requirements. That makes them an ideal solution for systems requiring voice alarm speakers to support safe evacuation and guide occupants during emergencies.



| Control 412C/T | |
|---|-------------------|
| 3" Full-Range Compact Ceiling Loudspeaker | |
| Frequency Range (-10dB) | 68 Hz - 17 kHz |
| Power Capacity Cont. Pink Noise (100 hrs) | 20 W (80 W Peak) |
| Impedance / Transformer | 8 Ω / 15 W |



| Control 412C/T-VA | |
|--|-------------------|
| 3" Full-Range Compact Ceiling Loudspeaker for Life Safety Applications (EN54-24) | |
| Frequency Range (-10dB) | 68Hz - 17kHz |
| Power Capacity Cont. Pink Noise (100 hrs) | 20 W (80 W Peak) |
| Impedance / Transformer | 8 Ω / 15 W |



| Control 414C/T | |
|---|-------------------|
| 4" Two-Way Coaxial Ceiling Loudspeaker | |
| Frequency Range (-10dB) | 65 Hz - 20 kHz |
| Power Capacity Cont. Pink Noise (100 hrs) | 30 W (120 W Peak) |
| Impedance / Transformer | 8 Ω / 25 W |



| Control 414C/T-VA | |
|---|-------------------|
| 4" Two-Way Coaxial Ceiling Loudspeaker for Life Safety Applications (EN54-24) | |
| Frequency Range (-10dB) | 65 Hz - 20 kHz |
| Power Capacity Cont. Pink Noise (100 hrs) | 30 W (120 W Peak) |
| Impedance / Transformer | 8 Ω / 25 W |



| Control 416C/T | |
|---|-------------------|
| 6.5" Two-Way Coaxial Ceiling Loudspeaker | |
| Frequency Range (-10dB) | 61 Hz - 20 kHz |
| Power Capacity Cont. Pink Noise (100 hrs) | 60 W (240 W Peak) |
| Impedance / Transformer | 8 Ω / 30 W |



| Control 416C/T-VA | |
|---|-------------------|
| 6.5" Two-Way Coaxial Ceiling Loudspeaker for Life Safety Applications (EN54-24) | |
| Frequency Range (-10dB) | 61 Hz - 20 kHz |
| Power Capacity Cont. Pink Noise (100 hrs) | 60 W (240 W Peak) |
| Impedance / Transformer | 8 Ω / 30 W |



| Control 418C/T | |
|---|-------------------|
| 8" Two-Way Coaxial Ceiling Loudspeaker | |
| Frequency Range (-10dB) | 57 Hz - 20 kHz |
| Power Capacity Cont. Pink Noise (100 hrs) | 90 W (360 W Peak) |
| Impedance / Transformer | 8 Ω / 60 W |



| Control 414C/T Micro | |
|---|-------------------|
| 4" Two-Way Ceiling Loudspeaker with Low-Profile Enclosure | |
| Frequency Range (-10dB) | 69Hz - 25kHz |
| Power Capacity Cont. Pink Noise (100 hrs) | 15 W (60 W Peak) |
| Impedance / Transformer | 8 Ω / 10 W |



| Control 414CT Micro Plus | |
|---|-------------------|
| 4" Two-Way High-Output Ceiling Loudspeaker with Low-Profile Enclosure | |
| Frequency Range (-10dB) | 69Hz - 25kHz |
| Power Capacity Cont. Pink Noise (100 hrs) | 25 W (100 W Peak) |
| Impedance / Transformer | - / 25 W |

CONTROL400

ENHANCED COVERAGE SERIES



An Evolution in Performance and Reliability

The Enhanced Coverage Series includes JBL's Coplanar Radiation Boundary Integrator™ to provide a more even frequency response throughout the coverage area and strikes an elegant performance to cost balance between the Standard and Premium models.



Integrated Coplanar RBI™ Technology

CRBI™ delivers an especially smooth sound character that remains consistent, clear, and pleasant across a wide coverage area, improving the listening experience for users as they move throughout a space.



| Control 424C/T | |
|---|-------------------|
| Compact 4" Full-Range Ceiling Loudspeaker with Coplanar RBI | |
| Frequency Range (-10dB) | 75 Hz - 18 kHz |
| Power Capacity Cont. Pink Noise (100 hrs) | 40 W (160 W Peak) |
| Impedance / Transformer | 16 Ω / 30 W |



| Control 424LP | |
|---|-------------------|
| Low-Profile 4" Full-Range Ceiling Loudspeaker with Coplanar RBI | |
| Frequency Range (-10dB) | 75 Hz - 18 kHz |
| Power Capacity Cont. Pink Noise (100 hrs) | 40 W (160 W Peak) |
| Impedance / Transformer | 16 Ω / 30 W |



| Control 426C/T | |
|---|-------------------|
| Compact 6.5" Full-Range Ceiling Loudspeaker with Coplanar RBI | |
| Frequency Range (-10dB) | 72 Hz - 19 kHz |
| Power Capacity Cont. Pink Noise (100 hrs) | 75 W (300 W Peak) |
| Impedance / Transformer | 12 Ω / 60 W |



| Control 426LP | |
|---|-------------------|
| Low-Profile 6.5" Full-Range Ceiling Loudspeaker with Coplanar RBI | |
| Frequency Range (-10dB) | 95 Hz - 19 kHz |
| Power Capacity Cont. Pink Noise (100 hrs) | 75 W (300 W Peak) |
| Impedance / Transformer | 12 Ω / 60 W |



| Control 426C/T-LS | |
|---|-------------------|
| Life-Safety 6.5" Full-Range Ceiling Loudspeaker with Coplanar RBI | |
| Frequency Range (-10dB) | 72 Hz - 19 kHz |
| Power Capacity Cont. Pink Noise (100 hrs) | 75 W (300 W Peak) |
| Impedance / Transformer | 12 Ω / 60 W |



| Control 419CS/T | |
|---|-------------------|
| High-Impact 8" In-Ceiling Subwoofer | |
| Frequency Range (-10dB) | 47 Hz - 320 Hz |
| Power Capacity Cont. Pink Noise (100 hrs) | 80 W (320 W Peak) |
| Impedance / Transformer | 8 Ω / 60 W |

CONTROL

400

PREMIUM COVERAGE SERIES



Flagship Coverage.

Unmatched Clarity.

The JBL Control 400 Premium Coverage Series delivers seamless flagship coverage for clarity-critical installations. Building on the legendary Control 40 Series, these speakers elevate acoustic performance, ease installation, and embody an ultra-modern design.



Seamless Radiation Boundary

Integrator™ Technology

JBL's proprietary Conical Radiation Boundary Integrator® (RBI™) technology delivers constant directivity coverage, ensuring that listeners enjoy an extraordinarily smooth sound character that remains consistent, clear, and pleasant across the entire coverage area.



Control 442C/T

2.5" Compact Ceiling Loudspeaker

| | |
|--|--------------------|
| Frequency Range (-10dB) | 130Hz - 20kHz |
| Power Capacity Cont. Pink Noise (100 hrs) | 15 W (60 W Peak) |
| Impedance / Transformer | 16 Ω / 12 W |



Control 447LP

6.5" RBI™-Equipped Two-Way Coaxial Ceiling Loudspeaker with Low-Profile Enclosure

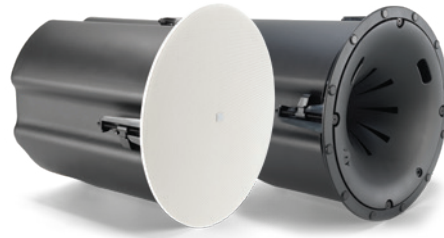
| | |
|--|-------------------|
| Frequency Range (-10dB) | 65Hz - 20kHz |
| Power Capacity Cont. Pink Noise (100 hrs) | 75 W (300 W Peak) |
| Impedance / Transformer | 8 Ω / 60 W |



Control 445C/T

5.25" RBI™-Equipped Two-Way Coaxial Ceiling Loudspeaker

| | |
|--|-------------------|
| Frequency Range (-10dB) | 55Hz - 20kHz |
| Power Capacity Cont. Pink Noise (100 hrs) | 75 W (300 W Peak) |
| Impedance / Transformer | 8 Ω / 60 W |



Control 447HC

6.5" RBI™-Equipped Two-Way Coaxial Ceiling Loudspeaker for High Ceilings

| | |
|--|-------------------|
| Frequency Range (-10dB) | 55Hz – 20kHz |
| Power Capacity Cont. Pink Noise (100 hrs) | 75 W (300 W Peak) |
| Impedance / Transformer | 8 Ω / 60 W |



Control 447C/T

6.5" RBI™-Equipped Two-Way Coaxial Ceiling Loudspeaker

| | |
|--|-------------------|
| Frequency Range (-10dB) | 55Hz - 20kHz |
| Power Capacity Cont. Pink Noise (100 hrs) | 75 W (300 W Peak) |
| Impedance / Transformer | 8 Ω / 60 W |



Control 440CS/T

8" Ceiling Subwoofer with Passive Crossover

| | |
|--|--------------------|
| Frequency Range (-10dB) | 32Hz - 300Hz |
| Power Capacity Cont. Pink Noise (100 hrs) | 100 W (400 W Peak) |
| Impedance / Transformer | 8 Ω / 80 W |

Optimized Product Pairings



Power, Processing, and Precision—Perfectly Aligned.

The JBL Control 400 Series pairs seamlessly with BSS Soundweb OMNI Processors and I/O Expanders for advanced signal processing and BSS Soundweb OMNI Dynamic Keypads for intuitive control. Crown ComTech D Series Power Sharing Amplifiers deliver clean, efficient power, creating a complete, scalable solution ideal for commercial installs requiring flexible routing, precise control, and consistent, high-quality ceiling audio performance.



Flexible, Scalable DSP for Any Install

BSS Soundweb OMNI processors deliver powerful, scalable audio processing for modern installations. Featuring Dante connectivity, HARMAN's HControl protocol, and AVX Suite compatibility, they enable seamless integration with MUSE controllers and OMNI Dynamic keypads. Ideal for commercial spaces, they offer flexible I/O, intuitive configuration, and rock-solid performance across diverse AV environments.

Features:

- Enterprise-grade network security support
- Dual redundant power supplies, Dante and HControl
- Full-color, interactive front panel LCD
- Choice of centralized or distributed DSP topologies
- HARMAN HControl protocol supported
- Private and Public Routing for Dante



Touch-Enabled Keypads for Any Space

BSS OMNI Dynamic Keypads blend the simplicity of keypads with the flexibility of touch panels. Featuring customizable LCD interfaces, they support HARMAN's HControl protocol and integrate seamlessly with BSS, AMX, or third-party systems. Available in wall and tabletop designs, they're easily configured and managed through the AVX Suite platform.

Features:

- Fully dynamic customizable touch display
- Wall-mount or tabletop options
- PoE-powered
- HControl protocol support
- Third-party system compatibility
- Modern industrial design



Compact Amps. Massive Impact

Crown ComTech D Series Amplifiers offer flexible power, Dante connectivity, built-in DSP, and an easy web interface—perfect for evolving install needs. With power sharing up to 500W and space-saving designs, they're ideal for restaurants, retail, hospitality, and more, delivering high-performance audio in a compact, installation-friendly package.

Features:

- Power sharing
- Compact design
- Built-in DSP
- Dante compatible
- Web user interface
- 2, 4, or 8 Channel options





CONTROL

400