



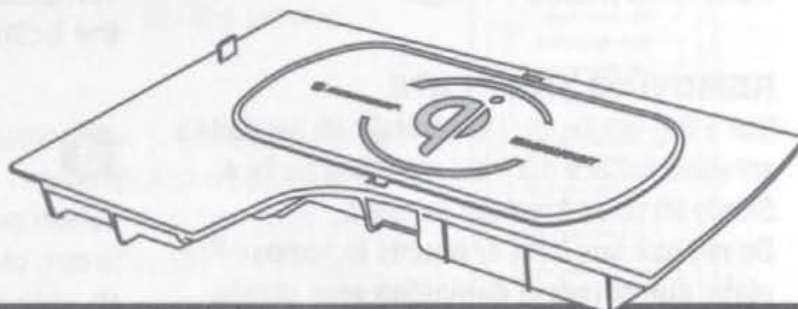
TAQ04

2015-UP Toyota Camry

Qi Center Console Direct Fit Bezel

PARTS INCLUDED

1. (1) Direct Fit Bezel w/ MQUSM
2. (1) Vehicle Specific T-harness
3. (2) MAGICPLATE™
4. (2) MAGICPLATE™ Applicator
5. (6) Double-sided Adhesive



READ INSTRUCTIONS COMPLETELY BEFORE INSTALLING THIS MOUNT KIT.

WARNING: Do not use the magnetic mount with any hard-drive based devices such as: iPod classic, iPod Video and Zune MP3 players. Use caution whenever removing or handling plastic parts of any vehicle. Unnecessary force or pressure can cause pieces to crack or break. Please use a plastic card to remove the metal plates. Remove adhesive residue with a non-abrasive cleaner.

CAUTION: This magnetic device is not a toy. The small magnets are harmful if swallowed. Keep away from children.

PRELIMINARY INTRODUCTION

Wirelessly charge your Qi-enabled smartphone without the need to plug your device into a car charger or USB cable. Quickly charge your device at 5W or 10W charging. The high powered neodymium magnets are 100% safe and will not damage your device. The TAQ04 works with Qi-enabled smartphones from these manufacturers: Apple, Samsung, Google, Microsoft, LG, HTC, Motorola. Also works with Qi-enabled cases, receivers, and battery covers.

CAUTION: Disconnect your vehicles negative battery terminal before the installation to help prevent electrical damage. We recommend the use of a volt/ ohm meter over a test light to check wiring. A test or grounded wire probe can cause damage to the vehicle's computer and/or diagnostic system. Avoid all factory airbag wiring - airbags can accidentally deploy causing serious injury or death. **NOTE:** See your vehicle's instructions for any special tools your installation might require.

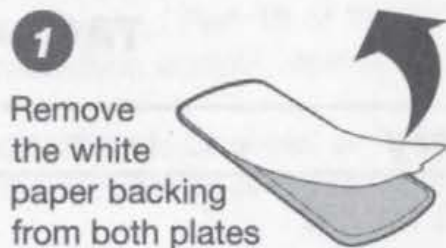
IMPORTANT! DO NOT RETURN PRODUCT TO THE RETAILER. If you need assistance or replacement parts contact us at: 1-800-363-4490 X1 | www.scosche.com/contact. Our office hours are: Mon-Fri: 8AM-5:30PM (PST) and Sat: 8AM-2PM (PST)

LIABILITY DISCLAIMER

This instruction booklet is based on carefully documented data and research of automobile disassembly, wire harness and information pertaining to the installation of this kit. Scosche Industries, Inc. cannot be held responsible for discrepancies/ inconsistencies that may occur due to the automobile manufacturing changes or options, or damages that may occur in the automobile during the installation of components while using this booklet.

MAGICPLATE™ MOUNTING OPTION 1

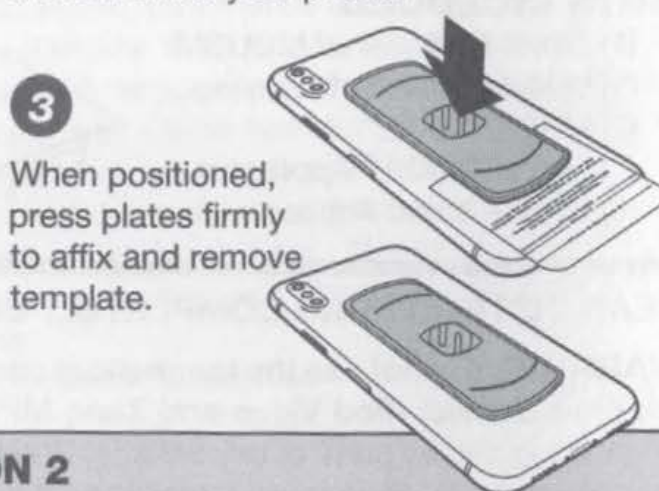
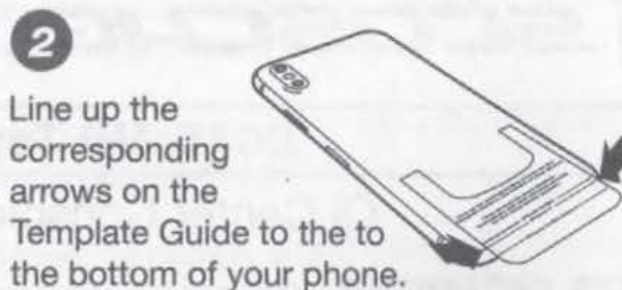
NOTE: For mounting directly to device, use the large single plate with template guide as shown in the instructions below.



REMOVING THE PLATE

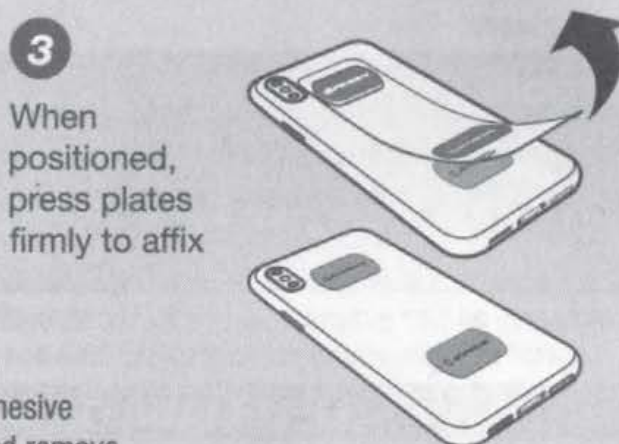
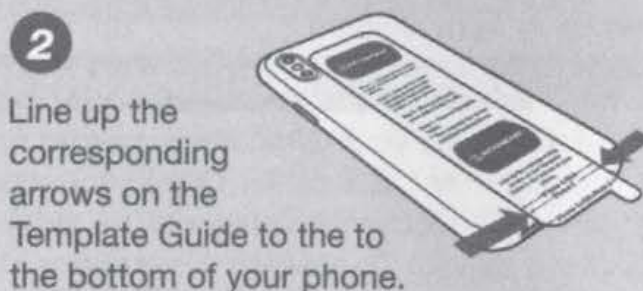
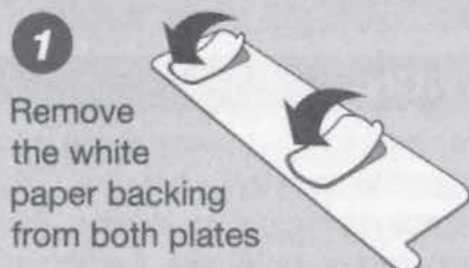
Use a thin plastic card to carefully lift the plate's adhesive surface from the mounting surface. Slowly lift up and remove the plate.

Do not use any heat or liquids to remove the plate, due to risk of damaging your phone. Contact Scosche Customer Service for any additional assistance at 800.363.4490 Ext. 1 or customerservice@scosche.com



MAGICPLATE™ MOUNTING OPTION 2

NOTE: For mounting directly to CASE, use the (2) small plates with the integrated template guide as shown below.



REMOVING THE PLATE

Use a thin plastic card to carefully lift the plate's adhesive surface from the mounting surface. Slowly lift up and remove the plate. **Do not use any heat or liquids to remove the plate, due to risk of damaging your phone. Contact Scosche Customer Service for any additional assistance at 800.363.4490 Ext. 1 or customerservice@scosche.com**

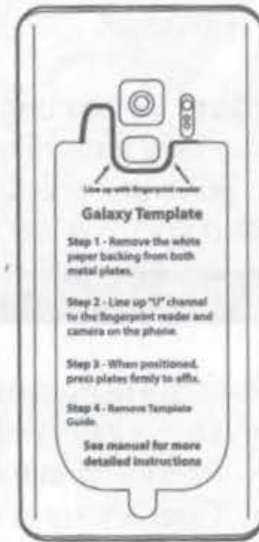
MAGICPLATE™ MOUNTING OPTION 3 (Continued)

NOTE: For mounting directly* to Galaxy S9/S9+, use the (2) small plates with the integrated template guide for Galaxy as shown. *For mounting directly to device only. Do not mount to case.

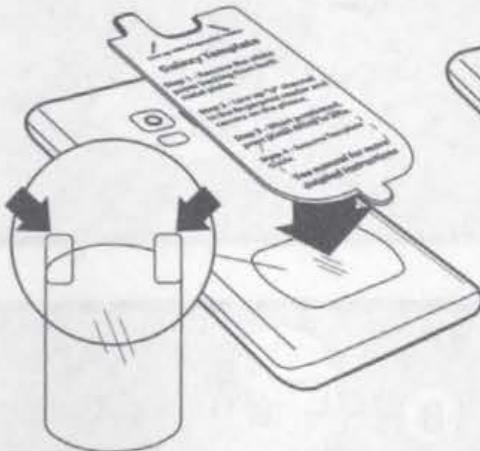
- 1** Remove the white paper backing from both plates



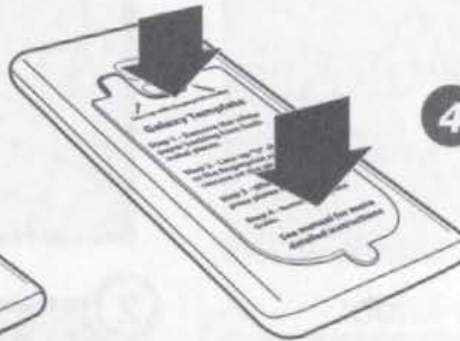
- 2** Line up "U" channel to the fingerprint reader and camera on the phone.



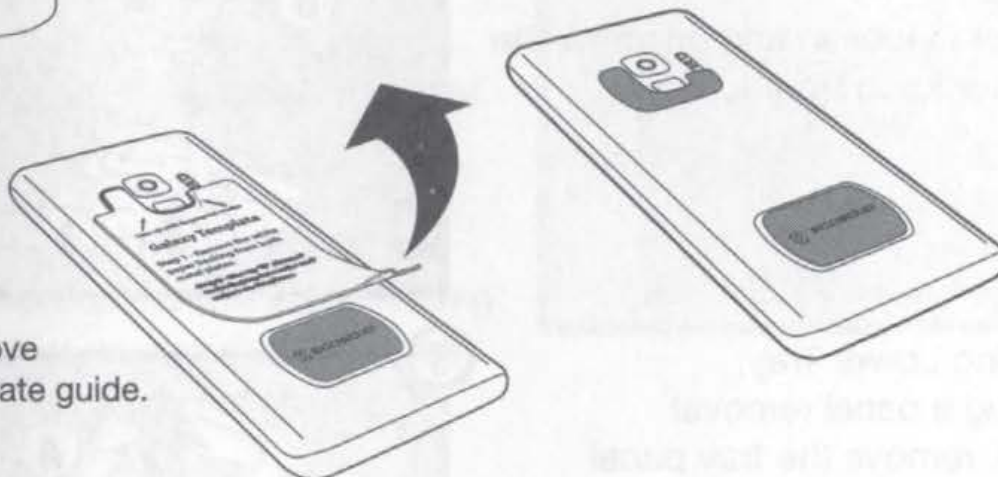
- 3** Remove the backing from the protective film as shown on the removal tabs (A), and place between the device and the lower plate (B). The protective film must be used when applying MAGICPLATE™ directly to the back of device.



- 4** When positioned, press plates firmly to affix.



- 5** Remove template guide.



REMOVING THE PLATE

Use a thin plastic card to carefully lift the plate's adhesive surface from the mounting surface. Slowly lift up and remove the plate.

Do not use any heat or liquids to remove the plate, due to risk of damaging your phone.

Contact Scosche Customer Service for any additional assistance at 800.363.4490 Ext. 1 or customerservice@scosche.com

Modification Required: Please read complete instructions before proceeding. Location modification required for this installation, proceed with caution. If you are unsure or feel that the installation is too difficult, we recommend you seek professional installation. Note that additional installation fees may apply and vary by location. Scosche is not responsible or liable for any additional fees or modification done by the installer.

Caution! Before beginning the disassembly make sure of the following:

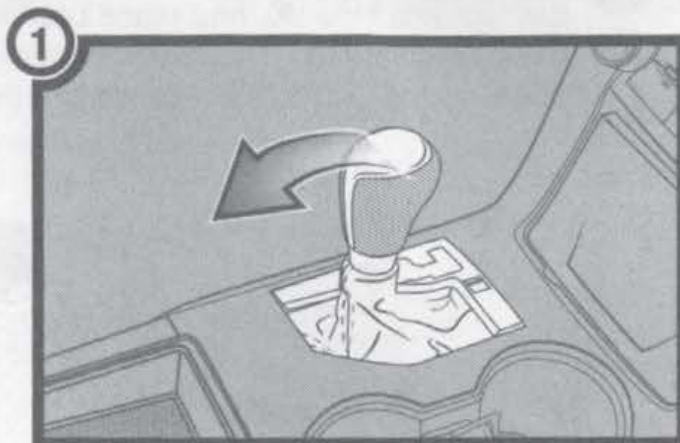
- Negative battery terminal is disconnected.
- Parking brake is **ON**.
- Gear shifter is set to a lower gear.

Accessing 12V Power

VEHICLE DISASSEMBLY

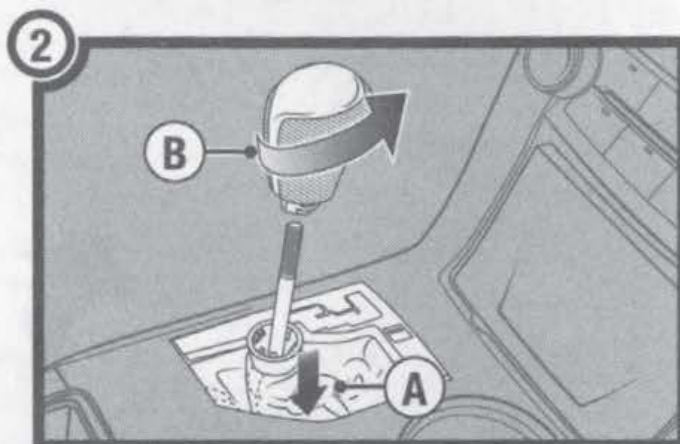
1. Disassembly preliminary steps:

- Disconnect negative battery terminal.
- Parking brake is **ON**.
- Gear shifter is set to a lower gear.



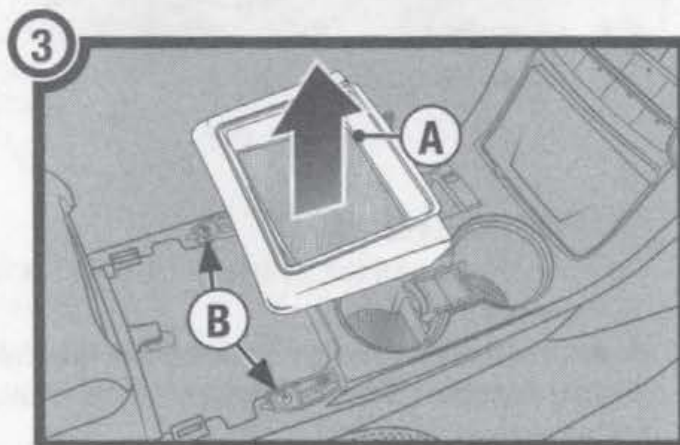
2. Removing the shifter knob:

- Unclip the shifter boot from the knob.
- Twist to loosen and unscrew the shifter knob from location.



3. Removing Lower Tray:

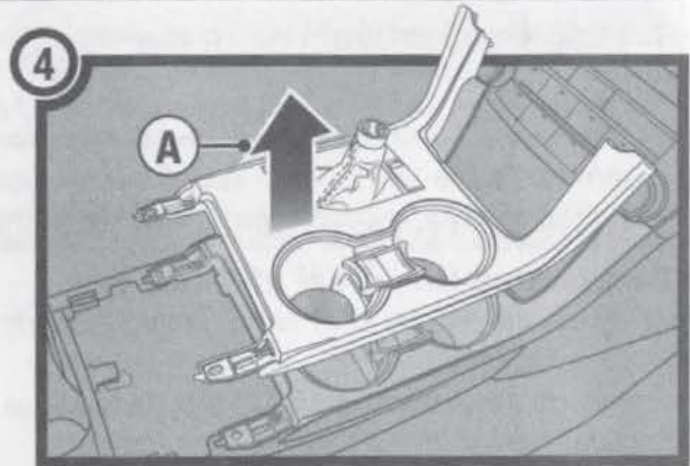
- Using a panel removal tool, remove the tray panel located below the shifter and cupholders.
- Remove and retain the exposed (2) screws securing the shifter panel.



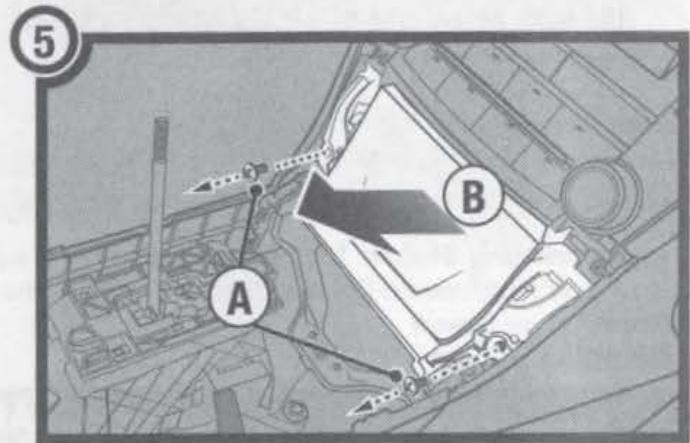
4. Removing the shifter panel:

- A. Carefully lift, disconnect and remove the panel from location.

Note: Once removed, retain and set aside for re-installation.

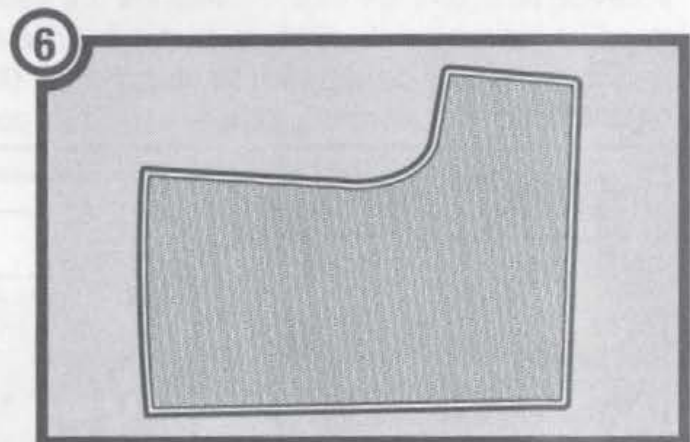
**5. Removing the center pocket:**

- A. Remove and retain the (2) screws securing the center console pocket.
- B. Carefully lift, disconnect, and remove the pocket center console pocket from location.

**6. Removing the rubber mat for preparation steps:**

- A. Open the the center console's pocket lid, then remove the mat from location.

Note: The mat will not be retained for re-installation, we reccomend safe keeping the mat incase you ever dicide to unistall the Qi assmebly for whatever reason.



If you have any questions or need technical assistance with the installation, or the most current application please call or visit us on the web at:

(800) 363-4490 x1 | www.scosche.com/contact

TESTING QI MODULE (MQUSM)

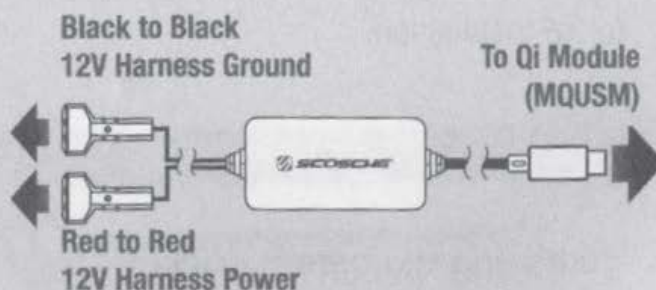
Testing Connection: Before proceeding to the preparation/installation please test the modules functionality by connecting the provided vehicle specific t-harness (diagram below). Once the module is connected, place the Qi-enabled device on the module and refer to the LED Status chart below for specifics. For technical assistance with the installation please call or visit us on the web at:

1-800-363-4490 x1 | www.scosche.com/contact

Note: The module can also be tested by connecting it to a USB to type-c connection power source (not included).

Connecting Universal 12V Harness

1. Tap into the vehicles 12V Power harness and using the appropriate tools.
2. Next, color match and clamp connect the Universal power harness to the vehicle's 12V harness.
3. If done correctly, the module will light-up when vehicle is turned on and the 12V power socket will retain power.



Important: Foreign Object Detection

Please follow the MAGICPLATE™ mounting instruction on pages 2 or 3 for best charging results. Note that blocking the charging coil with anything metallic object may cause the module to not work as designed.

LED Charging Status: The LED indicator on the side of the mount illuminates the charging status of the device. When powered ON, the indicator blinks in the following order: *BLUE, GREEN, BLUE*.

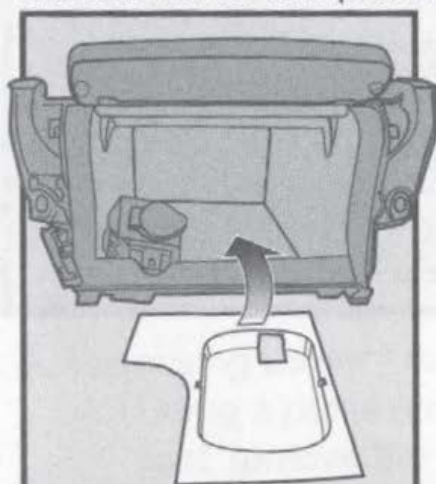
Standby = Green

Charging = Blue

PREPARATION

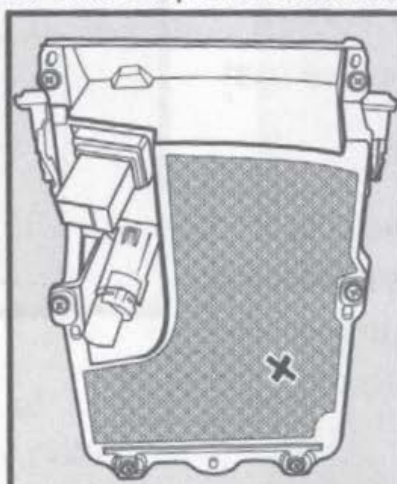
Once you have confirmed the modules working status, retrieve the pocket/shifter panel removed during step 5 of the disassembly process. Next, follow the steps below in the order shown to ensure the pocket modification is done correctly and for best fit of the **TAQ04** bezel.

CAUTION! DO NOT attempt to drill a hole while the pocket is still mounted to the vehicle.



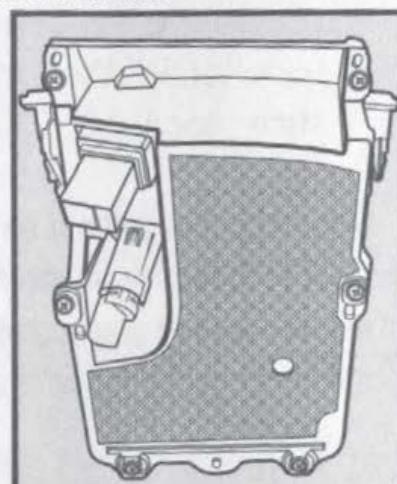
PREPARATION STEP A

Place TAQ04 Direct Fit bezel into pocket panel



PREPARATION STEP B

Use a contrasting chalk or marker, estimate and mark the hole location, then remove Qi-bezel.

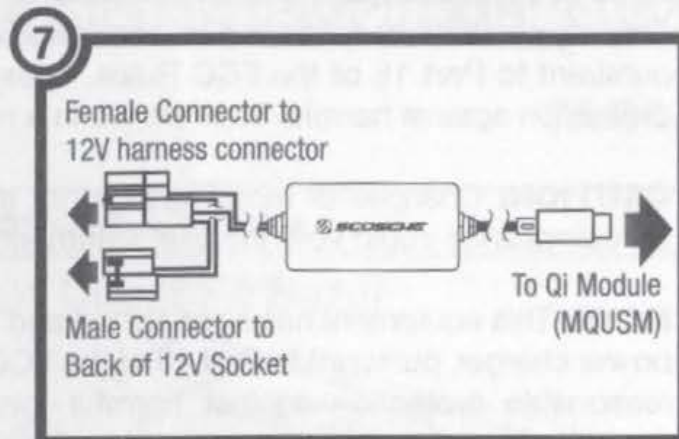


PREPARATION STEP C

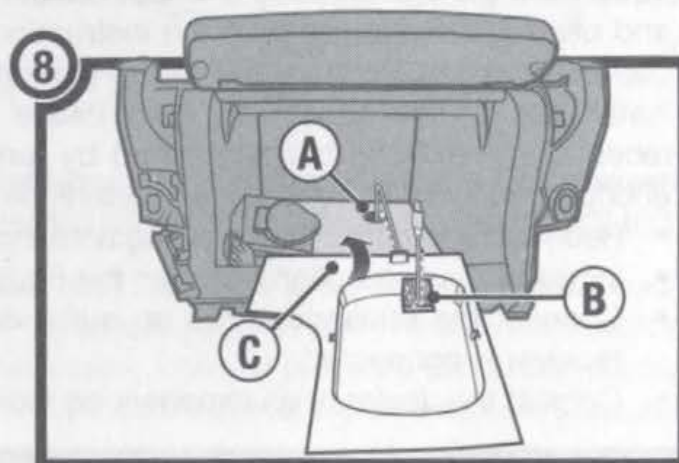
Carefully make a hole large enough to pass the USB type-c connector through.

VEHICLE ASSEMBLY

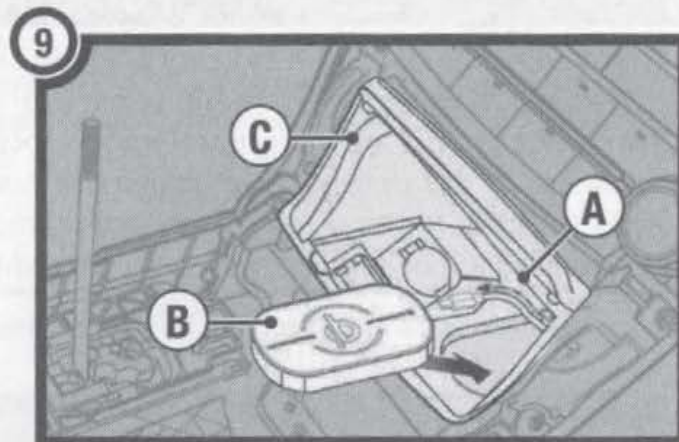
7. Connect the provided power t-harness according to the diagram displayed under the Test Connection at the top of page 6 or see illustration on the right. Connect the female and male 12V power connectors first then route the type-c connector to the designated slot created during the preparation steps on page 6.



8. Routing the type-c connector through the pocket/Qi-bezel:
- Pass the Type-C connector through the hole created during preparation on the pocket.
 - Second, pass the connector through the TAQ04 bezel.
 - Place direct-Qi bezel into the pocket location.



9. Routing the type-c connector to the **MQUSM** Qi module:
- Connect the Type-C connector to the MQUSM.
 - Place the module onto Qi bezel
 - Re-install the pocket into place using screws removed during disassembly.

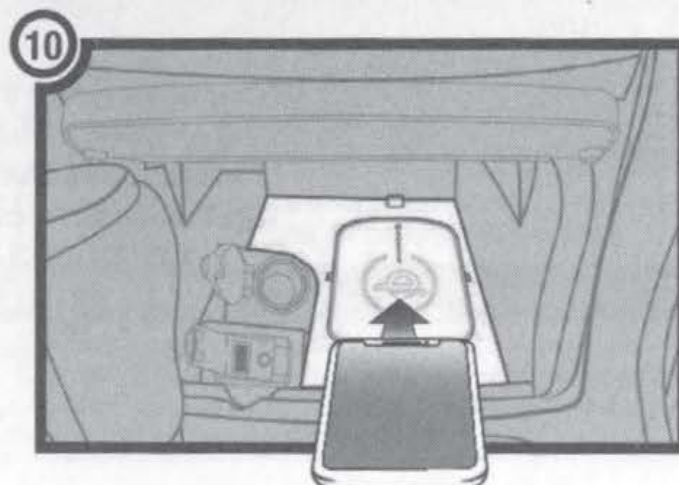


Notes:

- Hide any excess wiring under the panels/pocket before reassembling.
- Use the provided two-sided adhesives to secure the panel/module from moving.

10. Lastly, reassemble everything in reverse order, then place your Qi enabled device onto the TAQ04 assembly to charge your device. Refer to LED Charging Status for charging details (page 5).

***Phone NOT included**



FCC STATEMENT

This equipment has been tested and found to comply with the limits for a WPC device, pursuant to Part 18 of the FCC Rules. These limits are designed to provide reasonable protection against harmful interference in a residential installation.

CAUTION: Changes or modifications not expressly approved by the party responsible for compliance could void the user's authority to operate the product.

NOTE: This equipment has been tested and found to comply with the limits for a wireless power charger, pursuant to Part 18 of the FCC Rules. These limits are designed to provide reasonable protection against harmful interference in a residential installation. This equipment generated, uses and can radiate radio frequency energy and, if not installed and used in accordance with the instructions, may cause harmful interference to radio communications. However there is no guarantee that interference will occur in a particular installation. If this equipment does cause harmful interference to radio or television reception, which can be determined by turning the equipment off and on, the user is encouraged to try to correct the interference by one or more of the following measures:

- Reorient or relocate the receiving antenna.
- Increase the separation between the equipment and receiver.
- Connect the equipment into an outlet on a circuit different from that to which the receiver is connected.
- Consult the dealer or an experienced radio/TV technician for help.

FCC STATEMENT

This device complies with industry Canada License-exempt RSS standard(s). Operation is subject to the following two conditions: (1) this device may not cause interference, and (2) this device must accept any interference, including interference that may cause undesired operation of the device. This equipment complies with IC RSS-102 radiation exposure limits set forth for an uncontrolled environment. This transmitter must not be co-located or operated in conjunction with any other antenna or transmitter.

For complete warranty details or questions
visit us online at **www.scosche.com** or contact us at:

www.scosche.com/contact
customerservice@scosche.com
1(800) 363-4490 ext.1