

# Smart Video Doorbell



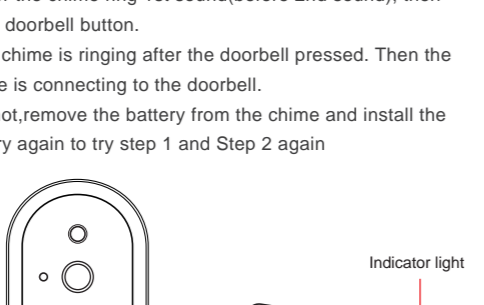
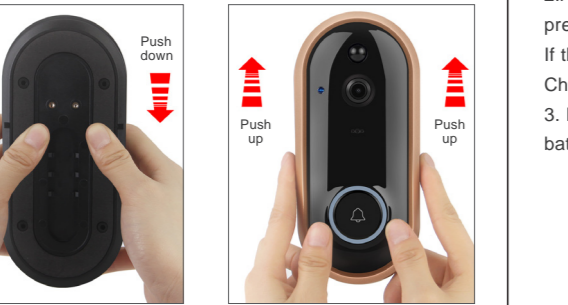
## Quick Start Guideline

Please read it carefully before usage and save the manual for future use

## Install the doorbell

### Remove the back-bracket

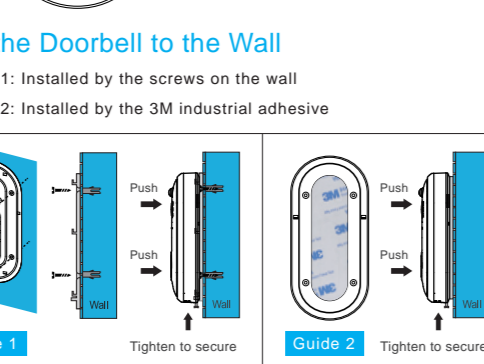
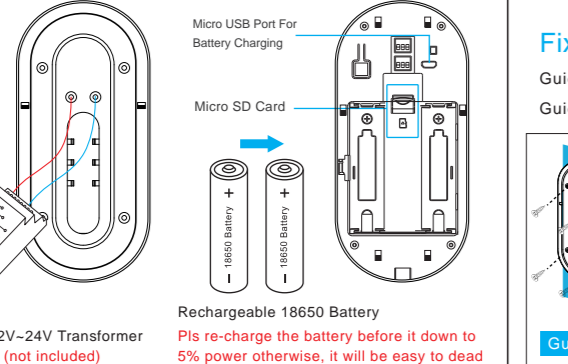
1. Please put the fingers as the below picture
2. Push down (Push up) the doorbell as the arrow shows



### Power Supply Solution

A: Hard Wire Power Source

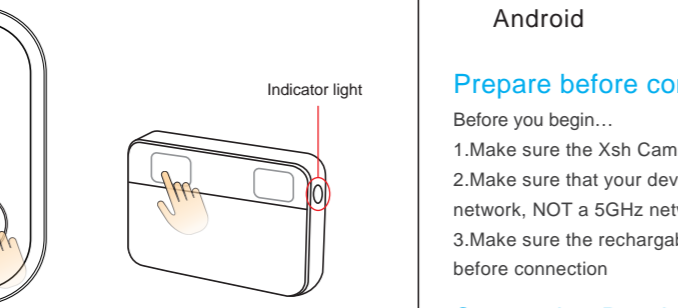
B: Powered By Battery



## Chime Connection

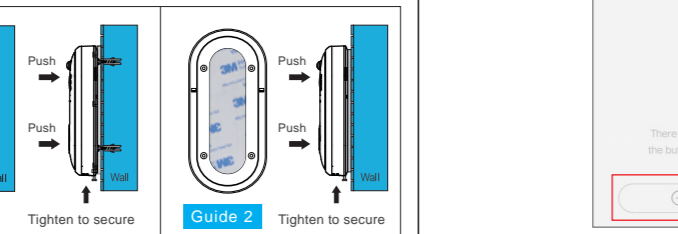
Attention: Please connect doorbell with your phone firstly. Then pair the chime with the doorbell. (WIFI is not Need for Chime)

1. Please hold press the " Volume " Key on the chime.
2. After the chime ring 1st sound (before 2nd sound), then press doorbell button.
3. If not, remove the battery from the chime and install the battery again to try step 1 and Step 2 again



## Fix the Doorbell to the Wall

Guide 1: Installed by the screws on the wall  
Guide 2: Installed by the 3M industrial adhesive



## Connecting doorbell to your phone

### Download the APP - XSH Cam

Scan the following the QR code or search " XSH Cam " on the app store to download the app. Note: Allow the app to send notifications to your phone firstly.

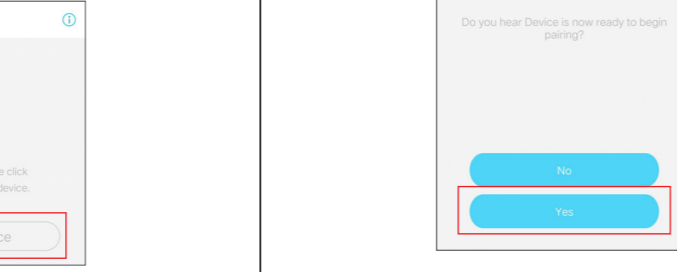


### Prepare before connection

1. Make sure the Xsh Cam app is installed to your device.
2. Make sure that your device is connected to a 2.4GHz Wi-Fi network, NOT a 5GHz network.
3. Make sure the rechargeable battery have been fully charged before connection

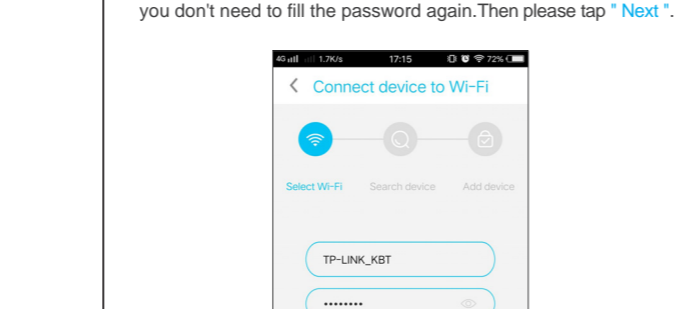
### Connecting Doorbell with App

1. Tap " Add a Device "



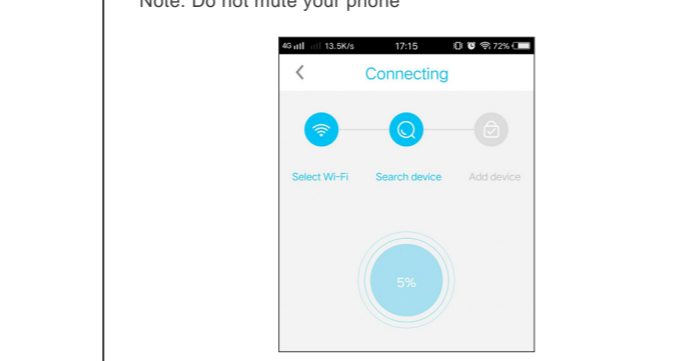
## Connecting doorbell to your phone

2. Tap " Setup Device " Note: If you have multiple devices, only setup one at a time



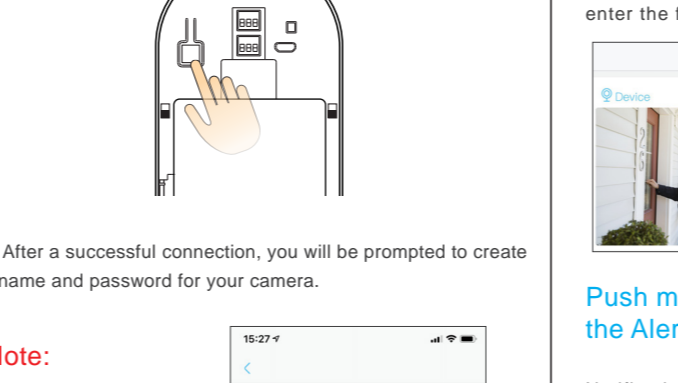
### Prepare before connection

3. Before setup, make sure the device is in configuration long press the " Reset Button " for 5 seconds with a voice prompt " The camera is now ready to begin pairing ". Then tap " Yes "



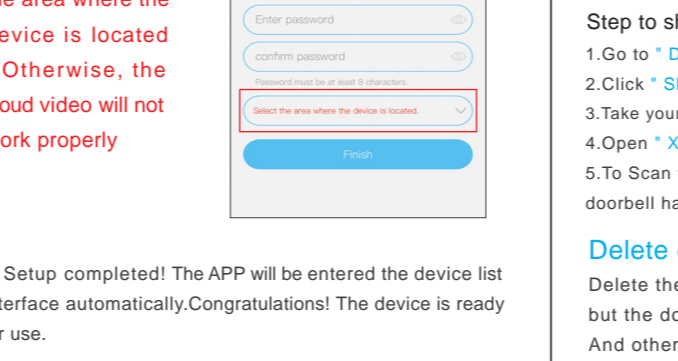
## Connecting doorbell to your phone

4. The name of the Wi-Fi network will automatically be filled in, enter the Wi-Fi password. The APP will fill the corresponding password automatically if connected with the same Wi-Fi, and you don't need to fill the password again. Then please tap " Next "



### Prepare before connection

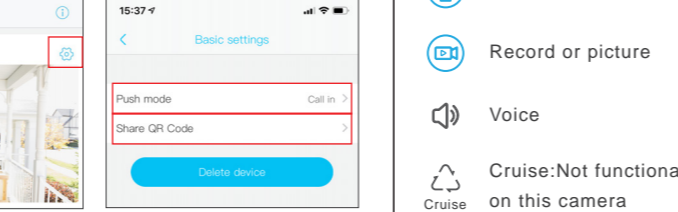
5. The mobile device will emit sound waves, keep quiet and make sure about 30cm distance between the phone and the device, and waiting for the device to configure the network. Note: Do not mute your phone



## Doorbell Function Instruction

### Basic Settings

Go to " Device List ", Click " ⚙️ " on the top right corner, to enter the following basic Settings



### Push mode: Change the Alert Mode

Call in: Calling you on every doorbell ringing and every motion alert

### Share QR code: Share doorbell to family or friend

1. Go to " Device list ", Click " ⚙️ " on the top right corner
2. Click " Share QR code " to get the QR code to share
3. Take your family or friend's phone to download " XSH cam " app
4. Open " XSH cam ", Click " Add a Device " - " Scan QR code "
5. To Scan the QR code you have shared. Then the doorbell have added more users

### Delete device / camera

Delete the doorbell, you will not get any notification but the doorbell still work. And other connected phone still able to get the notification

## Menu Instruction

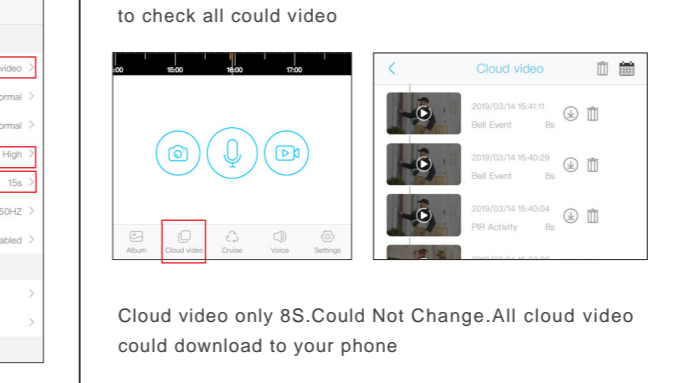
- Snapshot
- Talkback
- Record or picture
- Voice
- Cruise: Not functional on this camera
- Settings: More device Settings here
- Switch: Enlarged the video picture
- Cloud Video
- Album: Only Saved for the manual recorded Video or picture manual Screenshot, Not Used for automatically
- Power Status: Checking any battery Status here

### SD Video/HD Video:

Choose Different Resolution: SD Video Or HD video (Standard Video or High Standard video)

## Device Settings

Click " Settings " on Menu - " Device Settings " To get more settings



### SD Card / Cloud Storage Settings

Cloud Video/Storage: Enable it to get cloud storage service

Note: Cloud Storage is free. 7day loop recording Each record only 8S. Couldn't change it

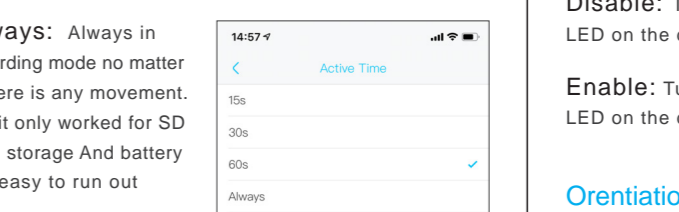
SD card Storage Settings Cloud Video/Storage: Disable it to get Micro SD card inserted for storage

Checking and SD card capacity and Format SD card here

## Checking Recorded Video

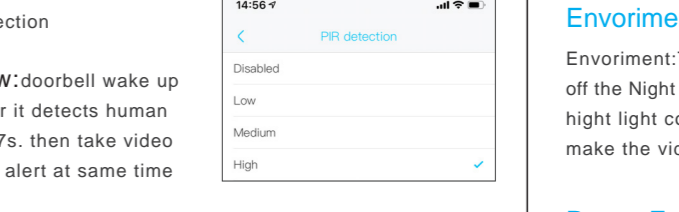
### Checking Recorded Video on Cloud storage

Please find the " cloud video " on the live video interface to check all could video



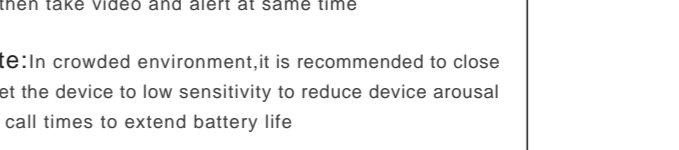
### Checking Recorded Video on SD card

Please drag the timeline to the yellow area to play the recorded video. Yellow area is the recorded Video



### Checking Recorded Video on SD card

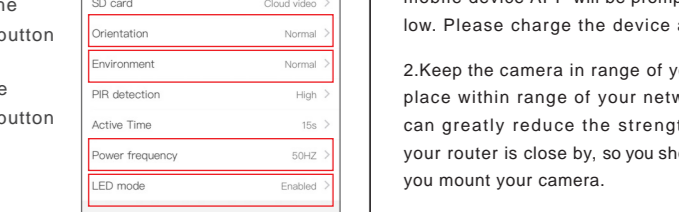
SD video could download from SD card Video Length setup by the active time



## Active Time / Dormancy Time

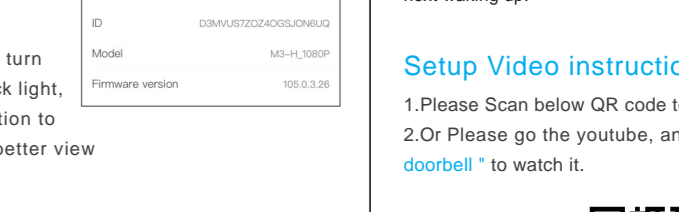
Recording time setup. Only available for SD card storage

15S. 30S. 60S: choose different record time after the PIR motion detection have been triggered for recording



### PIR detection: Motion Detection Setup

Disble: Close the PIR detection



### Low: doorbell wake up

after it detects human for 7s. then take video and alert at same time

### Medium: doorbell wake up

after it detects human for 15s. then take video and alert at same time

### High: doorbell wake up

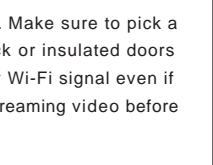
after it detects human at least 30s. then take video and alert at same time

## LED mode Setup:

Turn on / off the LED on the doorbell button

Disable: Turn off the LED on the doorbell button

Enable: Turn on the LED on the doorbell button



### Orentiation

Orentiation: Change the Orentiation of the video

### Envoriment

Envoriment: Turn on / turn off the Night IR or back light, high light compensation to make the video in a better view

### Power Frequency

Power frequency: Change the power frequency for the doorbell



## Note for using

1. The device is powered by rechargeable lithium batteries. New battery is not fully charged. Please charge it firstly on the 1st installation. After power off, then you could charge it by connecting USB cable with usb adpater, power bank, PC or laptop. The mobile device APP will be prompted while the battery voltage is low. Please charge the device after received the reminder.
2. Keep the camera in range of your router. Make sure to pick a place within range of your network. Thick or insulated doors can greatly reduce the strength of your Wi-Fi signal even if your router is close by, so you should try streaming video before you mount your camera.
3. The device is a low power consumption intelligent products, can support remote wake up from the APP, PIR human detection, press doorbell wake up. The device will be works for 30 seconds after wake up then be in the resting state automatically and until to next waking up.

## Setup Video instruction

1. Please Scan below QR code to watch the instruction guide
2. Or Please go the youtube, and search " NewPal M6 Video doorbell " to watch it.



## NewPal After-Sales Support

Email: support@newpal.shop www.newpal.shop