

LED READY T8 STRIP 2.0

Energy-efficient alternative to traditional fluorescent fixtures. Designed for superior performance when paired with the latest energy-saving direct wire LED linear lamp technology.

APPLICATION

Ideal for a variety of applications; offices, hospitals, retail stores, schools, lobbies, commercial buildings and work areas.



SPECIFICATIONS

Electrical

- Input voltage: 120-277V

Environment

- Operating temperature: -13°F ~ 104°F

Operating temperature may vary depending on the lamps used.

- Suitable for damp locations (IP20)

Construction

- Standard sizes: 4FT
- Heavy duty metal housing
- Standard finish: White

Installation

- Pre-wired with non-shunted sockets for T8 Double-End Type B Direct Wire and Type C tubes
- Suitable for surface mounting

Listing

- UL Listed (U.S. & Canada)

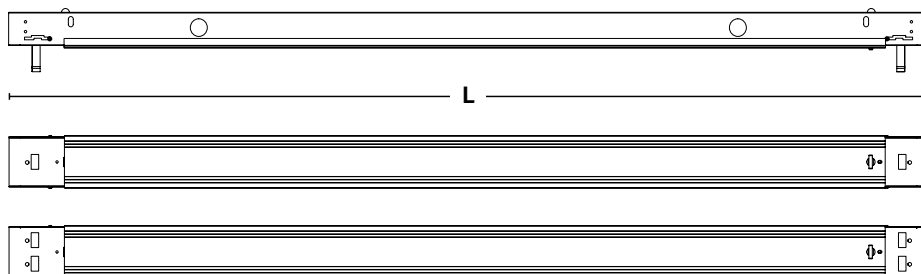
Warranty

- Standard 5 years

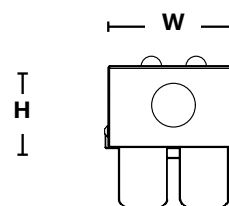


DIMENSIONS

LENGTH
4FT

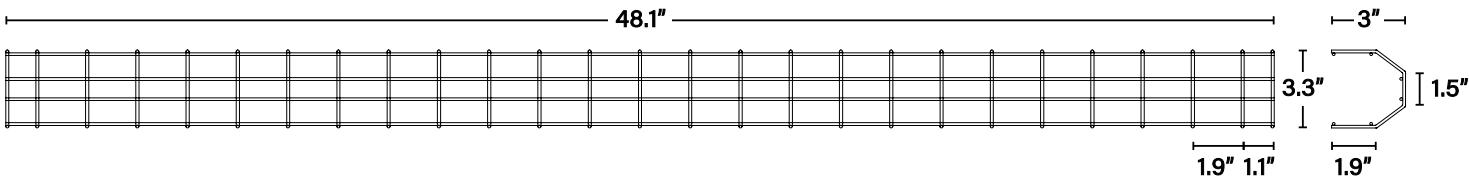


| LENGTH | 4FT |
|------------|-------|
| LAMP QTY | 2 |
| Length (L) | 48.3" |
| Width (w) | 2.8" |
| Height (H) | 1.8" |



T8 STRIP 2.0

WIRE
GUARD



ROW
ALIGNER

