

LED READY

T8 STRIP 2.0

Energy-efficient alternative to traditional fluorescent fixtures. Designed for superior performance when paired with the latest energy-saving direct wire LED linear lamp technology.

APPLICATION

Ideal for a variety of applications; offices, hospitals, retail stores, schools, lobbies, commercial buildings and work areas.



SPECIFICATIONS

Electrical

- Input voltage: 120-277V

Environment

- Operating temperature: -13°F ~ 104°F

Operating temperature may vary depending on the lamps used.

- Suitable for damp locations (IP20)

Construction

- Standard sizes: 4FT
- Heavy duty metal housing
- Standard finish: White

Installation

- Pre-wired with non-shunted sockets for T8 Double-End Type B Direct Wire and Type C tubes
- Suitable for surface mounting

Listing

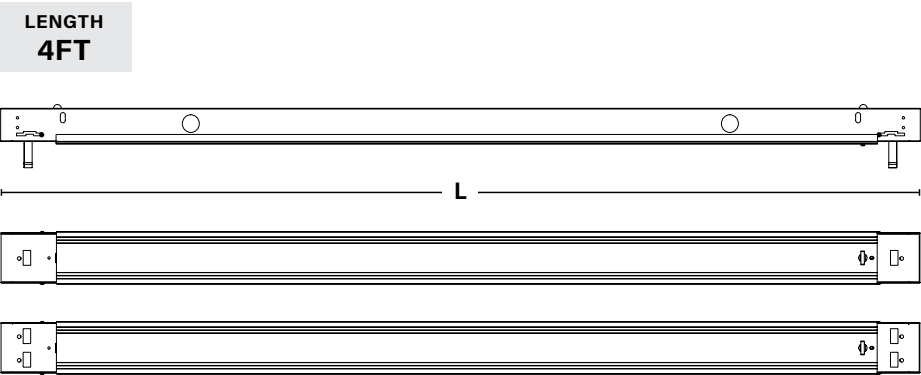
- UL Listed (U.S. & Canada)

Warranty

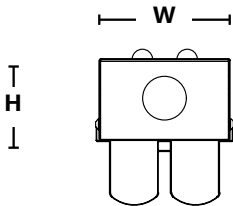
- Standard 5 years



DIMENSIONS

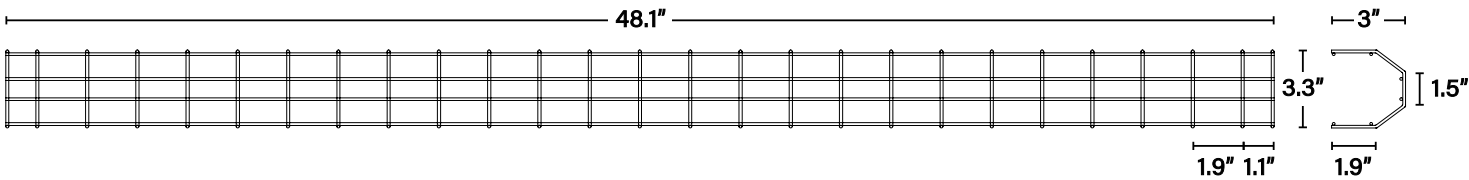


LENGTH	4FT
LAMP QTY	2
Length (L)	48.3"
Width (w)	2.8"
Height (H)	1.8"



T8 STRIP 2.0

WIRE
GUARD



ROW
ALIGNER

