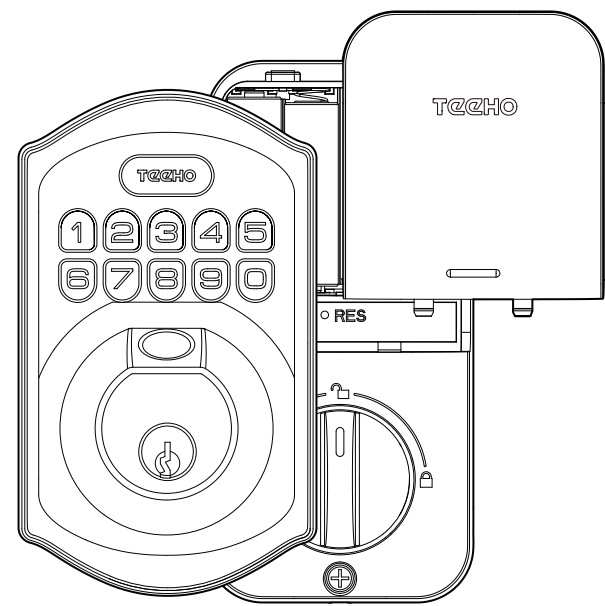
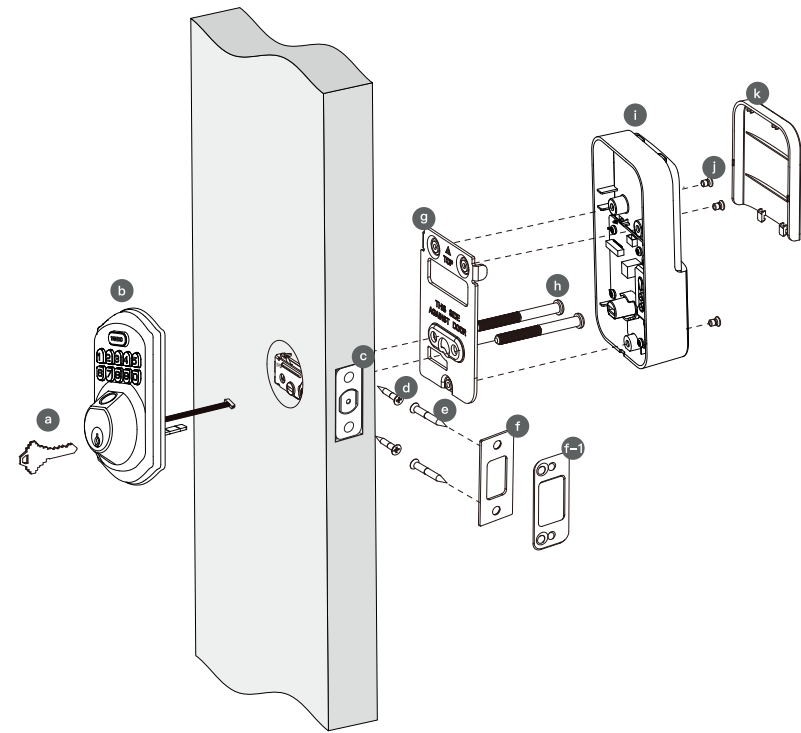


# T2CHO

## Installation Instructions

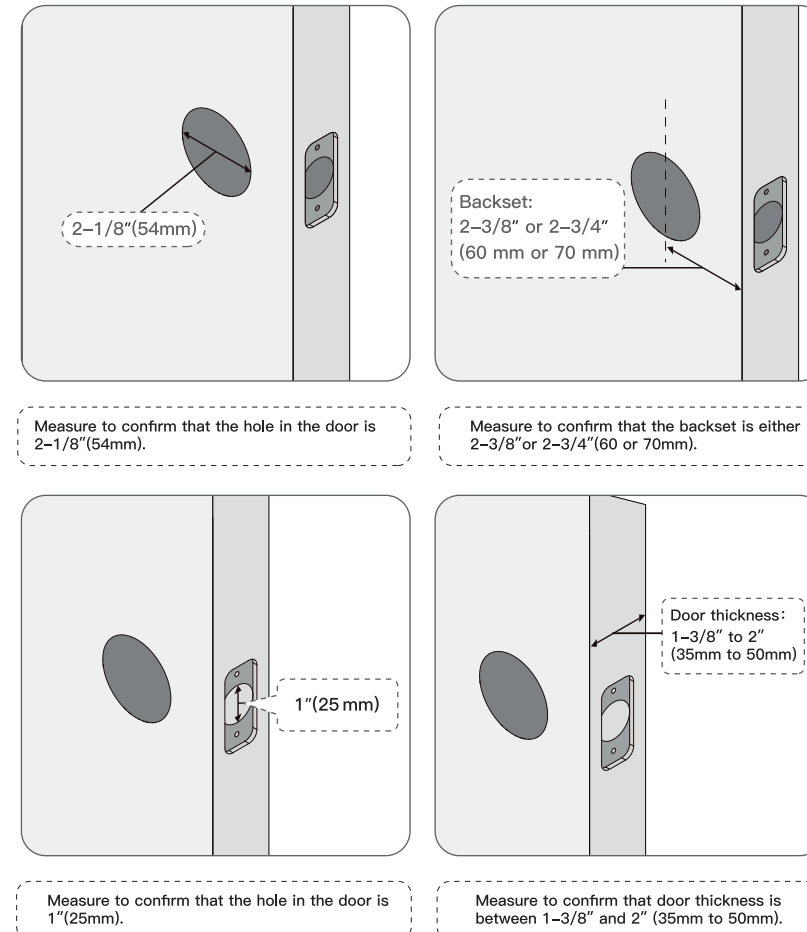


### Parts List:

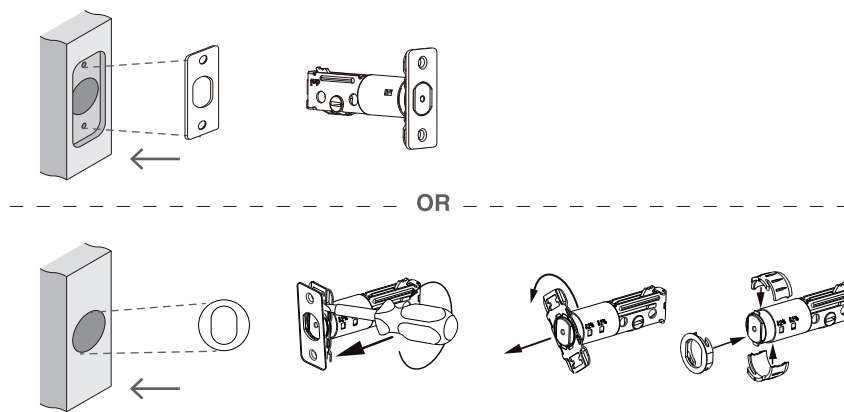


The details of part identification is shown on following page

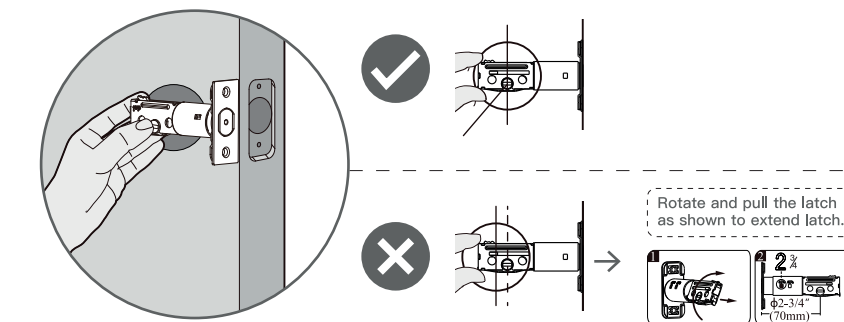
### 1. Prepare the door and check dimensions



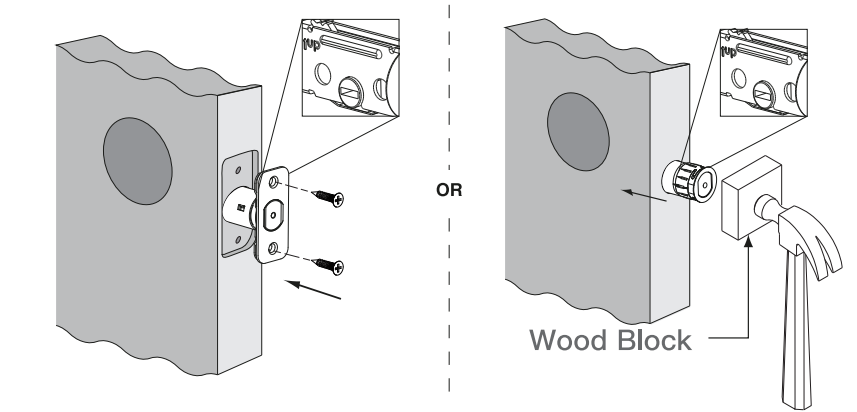
### 2. Choose faceplate



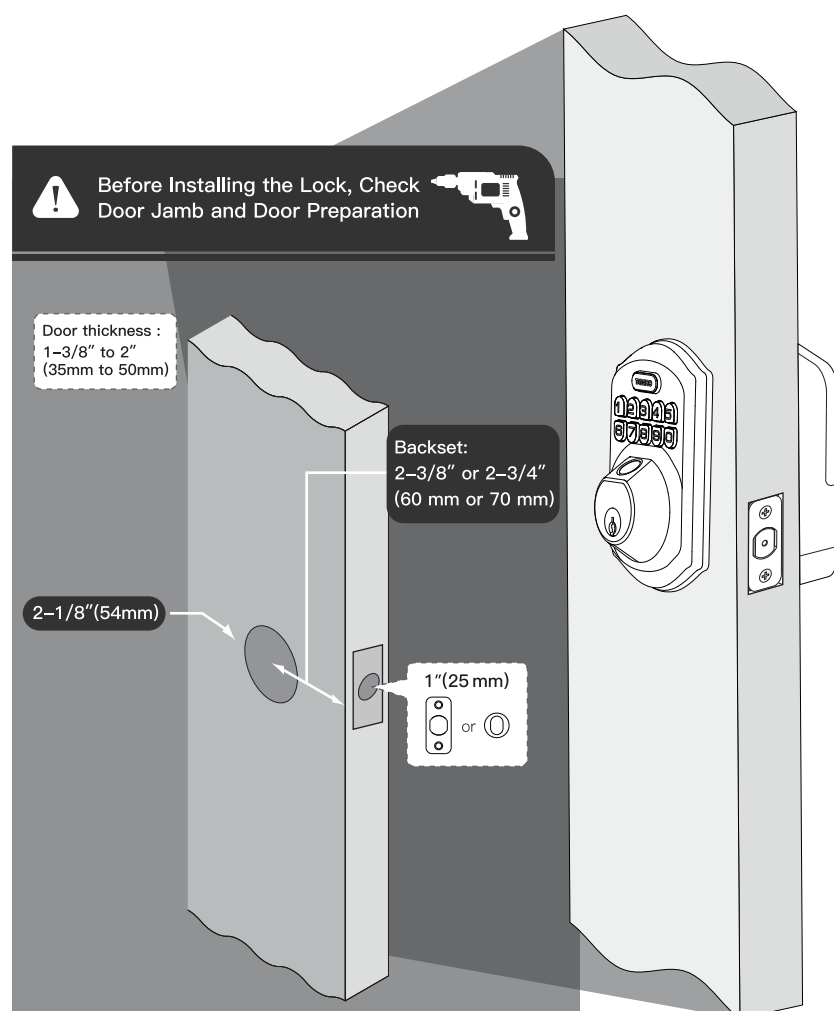
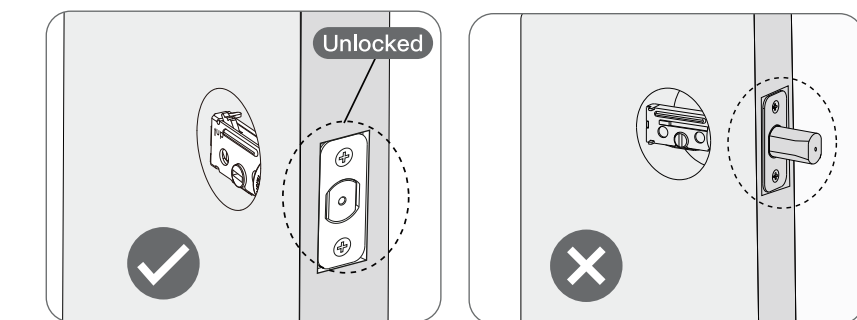
### Is the slotted hole centered in the door hole?



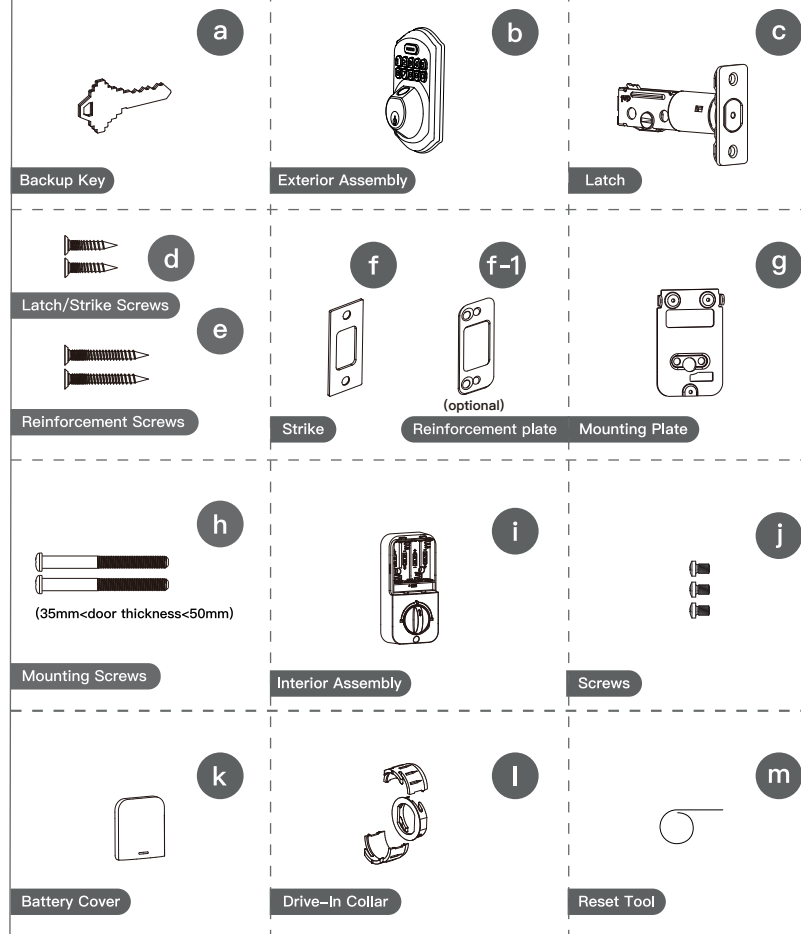
### 3. Install latch and deadbolt



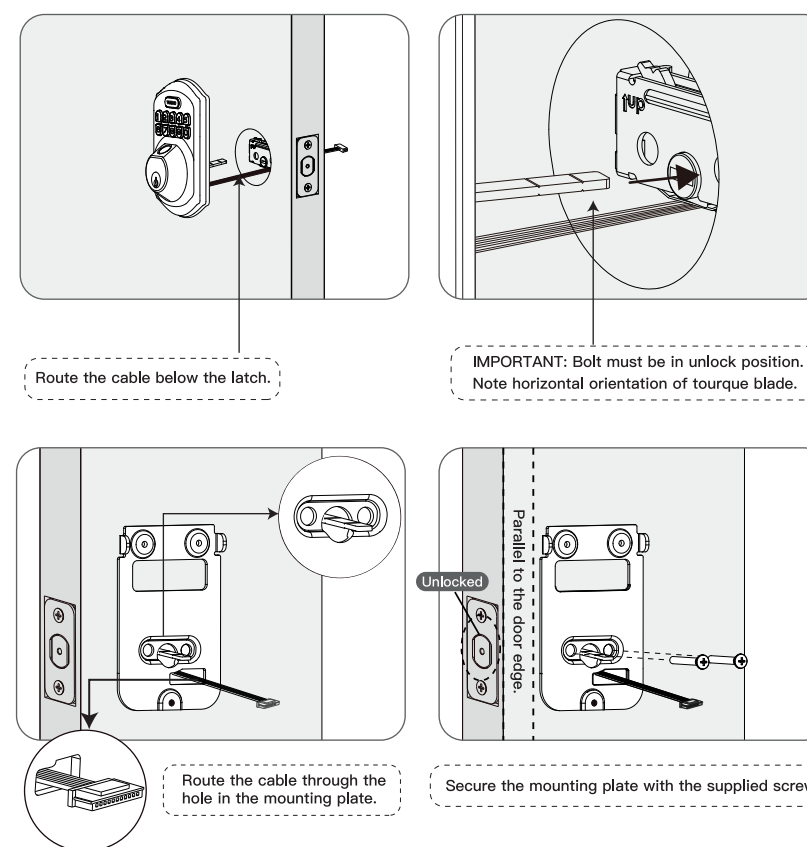
**IMPORTANT:** Keep the latch in unlocked position before installation.



### Parts identification

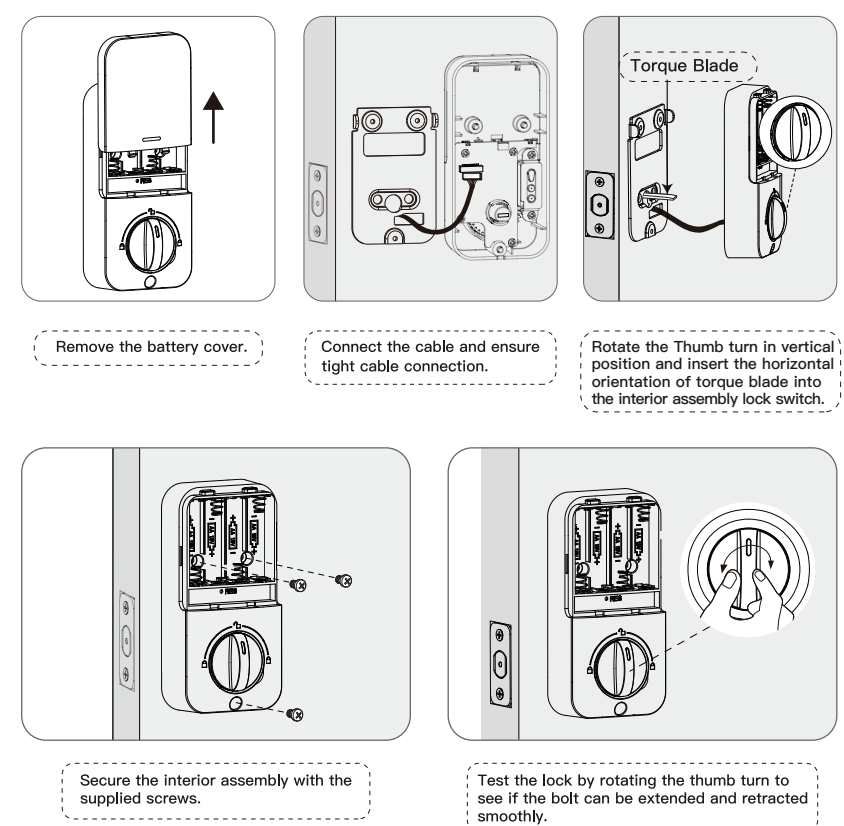


### 4. Install exterior assembly



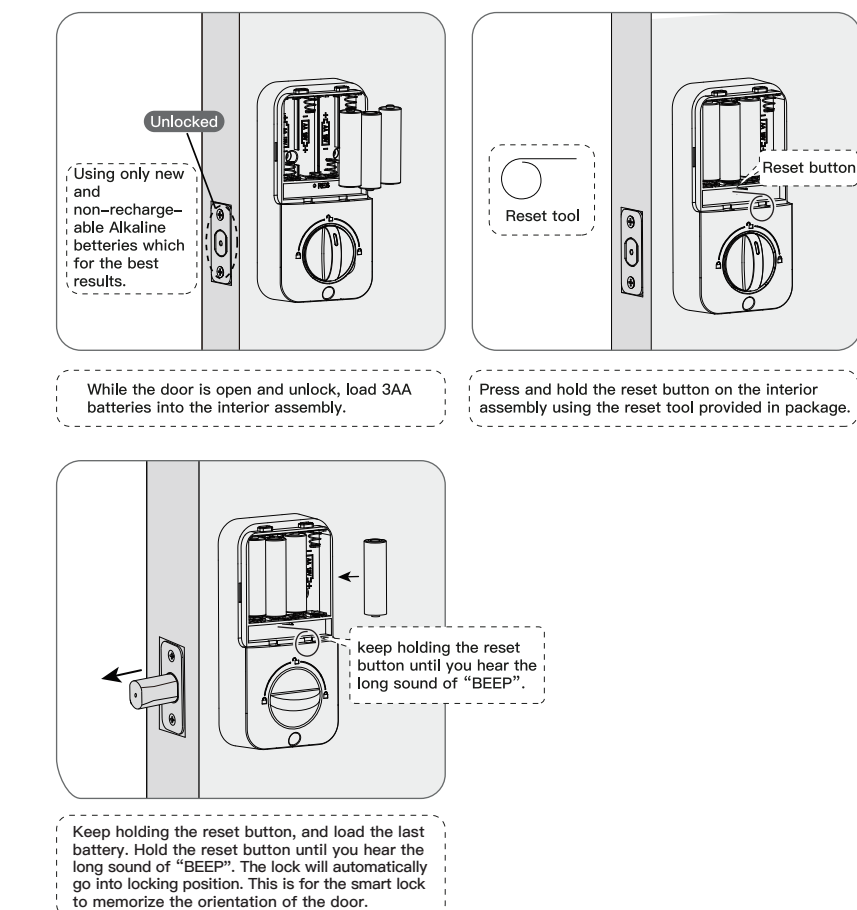
### 5. Install interior assembly

**Do not load batteries until lock is completely installed.**

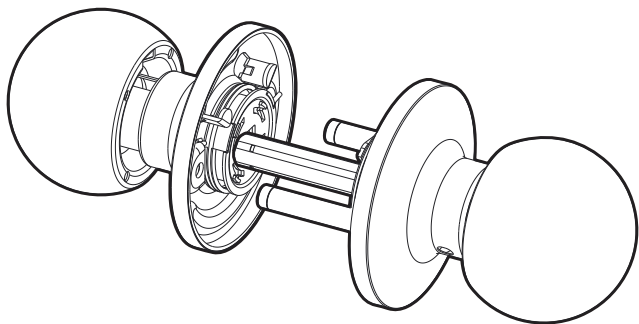


### 6. Detect left/right hand door installation

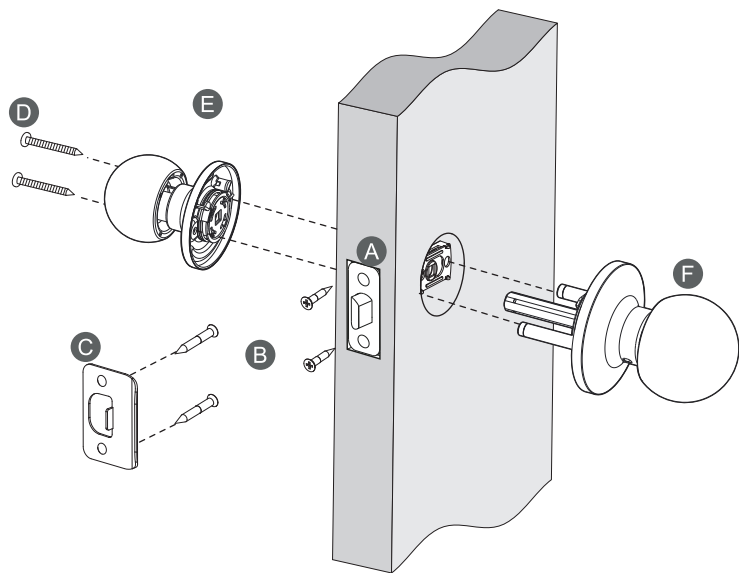
**IMPORTANT:** This step is required and crucial for the lock after installation!



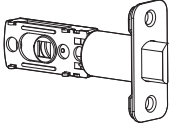
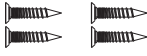

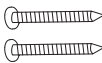
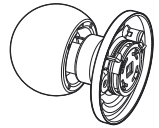
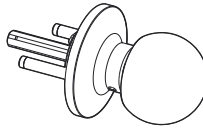
# Installation Instructions of Knob



Thank you for purchasing our products. Please review this manual thoroughly before operating your device.  
All pictures in this manual are for illustration purpose only. Actual product may vary due to product upgrade.



## Parts list

<b>A</b> Latch x1 	<b>B</b> Latch & Strike screws x4 	<b>C</b> Strike x1 
<b>D</b> Mounting Screw x2 	<b>E</b> Rear Knob x1 	<b>F</b> Front Knob x1 

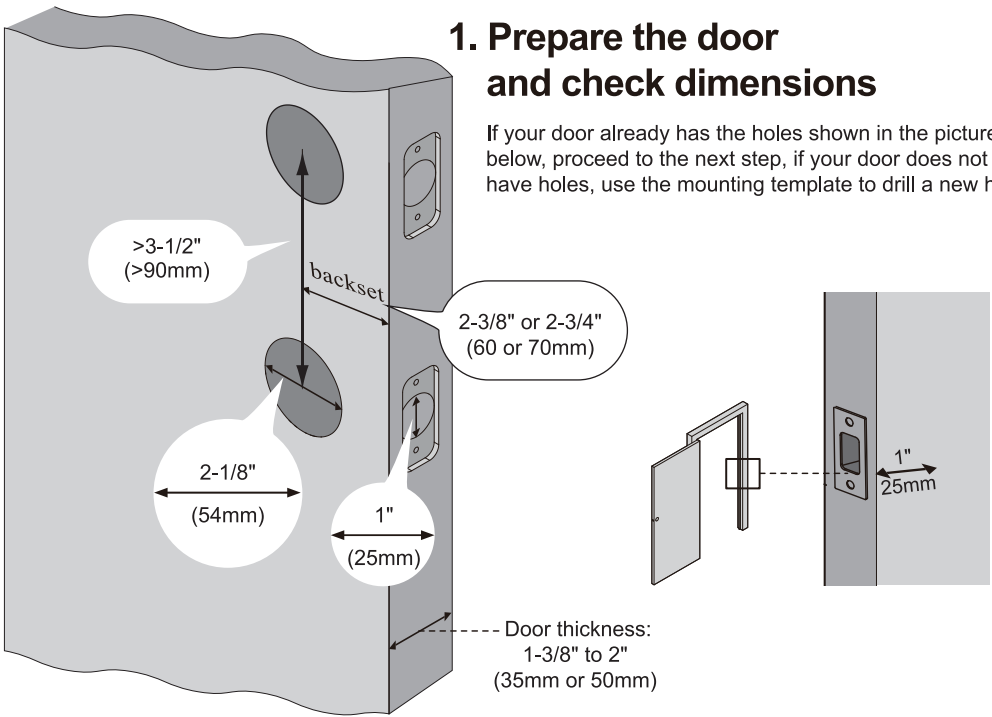
### TOOL REQUIRED:



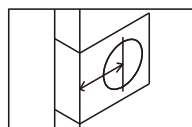
Do not use an electric screwdriver during installation.

## 1. Prepare the door and check dimensions

If your door already has the holes shown in the picture below, proceed to the next step, if your door does not have holes, use the mounting template to drill a new hole.

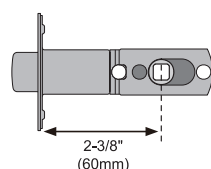


## 2. Latch backset adjustment

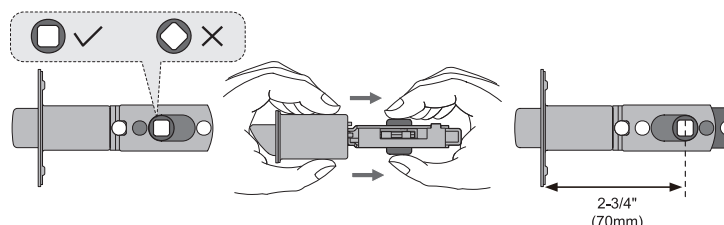


Backset is the distance from the door edge to the center of the hole in the door. The latch is provided with adjustable design which can fit either 2-3/8" (60mm) or 2-3/4" (70mm) backset.

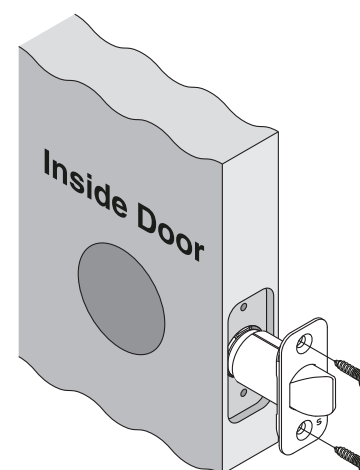
**A.** If the backset of your door is 2-3/8" (60mm), no need to adjust the latch.



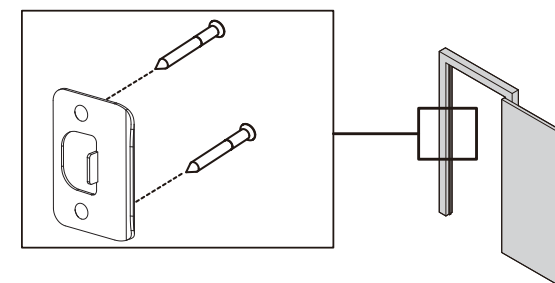
**B.** If the backset of your door is 2-3/4" (70mm), please adjust the latch.



## 3. Install latch and strike

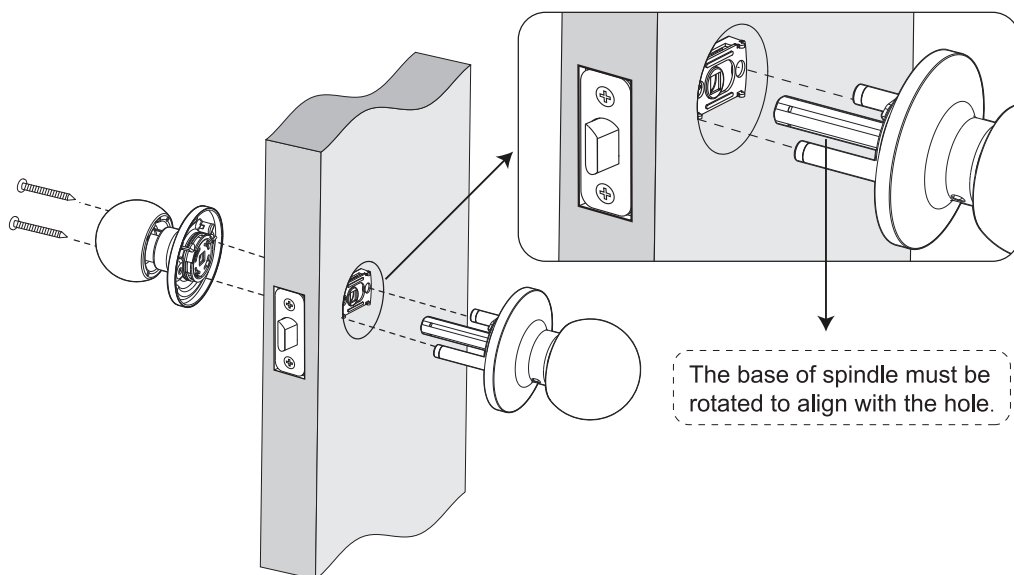


**! IMPORTANT:**  
The latch should be aligned with the chiseled properly.



**! IMPORTANT:**  
Make sure the hole in door frame is drilled a minimum of 1" (25mm) depth.

## 4. Install front and rear knob



## 5. Test the knob

Keep the door open, checking out front and rear lever to test if it works smoothly.

