

### DESCRIPTION

The series of AC-DC switching power supplies in a package of 35.7 x 25.0 x 19.0 mm are capable of delivering 3 watts. They are designed for industry control application, stand by power application.

### FEATURES

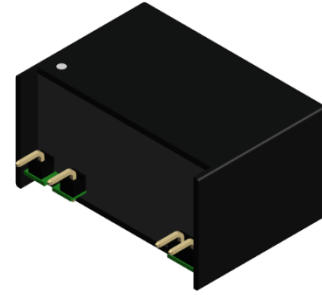
- Universal input 90-264Vac
- Ultra compact low profile AC-DC converter
- No Y-capacitor / low leakage current
- Built-in fusible resistor
- No load power consumption 0.05W
- OVP, short circuit protection
- 3750 VAC / 60sec. isolation

### WATTAGE

Wattage: 3W

### DIMENSION

Dimension: 35.7(L) x 25.0(W) x 19.0(H) mm



### SAFETY STANDARD APPROVAL

Meet 60950 / 60335-1

### ENVIRONMENTAL SPECIFICATION

Operating temperature: -25°C to +85°C

Storage temperature: -25°C to +85°C

### SELECTION GUIDE

Part number	Input voltage	Output voltage	Output current @ full load	Efficiency <sup>(1)</sup> (typ.)	Capacitive load <sup>(2)</sup> (max.)
A03-XE1-3.3	90-264 VAC	3.3 VDC	900 mA	70%	15000 µF
A03-XE1-05		5 VDC	600 mA	74%	7500 µF
A03-XE1-06		6 VDC	300 mA	75%	6000 µF
A03-XE1-12		12 VDC	250 mA	78%	3000 µF
A03-XE1-15		15 VDC	200 mA	79%	1000 µF
A03-XE1-24		24 VDC	125 mA	81%	200 µF

1. Typical efficiency measured @115Vac/ 230Vac, full load and +25°C after warm-up time.
2. Capacitive load measure @115Vac/60Hz with constant resistant mode full load.
3. The product information and specifications are subject to change without prior notice.
4. All specifications valid at nominal input voltage(115/230VAC), full load and 25°C after warm-up time unless otherwise stated.

### SPECIFICATION

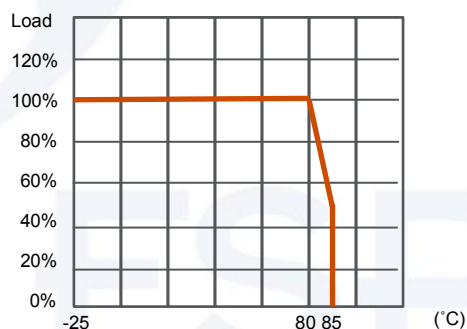
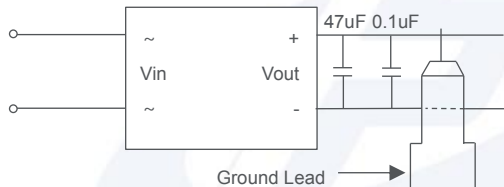
	Parameter	Conditions	Min.	Typ.	Max.	Unit
Input	Input voltage range		90		264	VAC
	Input frequency		47		63	Hz
	No load power consumption				0.05	W
	Inrush current (cold start@25°C)	115VAC 230VAC			15 30	A A
	Start-up time				1	s
	Leakage current	264V/63Hz			0.01	mA
	External fuse (or internal)			Internal wire wound resistor		
	Output voltage tolerance <sup>(1)</sup>				±6	%
Output	Ripple & noise <sup>(2)</sup>	Vo=3.3V / 5V / 24V Vo=6V / 12V / 15V			200 120	mVp-p mVp-p
	Hold up time	115VAC 230VAC	15 80			ms ms
	Minimum load		2			%
	Line regulation				±1.5	%
	Load regulation	10%-100% load			±2	%
	Operating frequency			60		KHz
Environment	Operating temperature	With derating	-25		85	°C
	Storage temperature		-25		85	°C
	Relative humidity				95	%RH
	Vibration			MIL-STD-202G		
Function	Isolation voltage	1 minute, Pri to Sec Cut-off current: 5mA	3750			VAC
	Isolation resistance	DC 500V	1			GΩ
	MTBF	25°C, 115VAC, 5V output			3.318x10 <sup>6</sup>	Hours
	Short circuit protection		Continuous, Automatic recovery			
	Over voltage protection		Zener diode clamp			
	Over load protection		Automatic recovery			
	Safety		Meet 60950; 60335-1			
Physical	Dimension	(L x W x H)		35.70x25.00x19.00 mm		
	Case material			UL94V-0 black plastic		
	Potting material			Silicone		
	Weight			27.5		g
EMC	EMI	EN55032		Class B		
	ESD	IEC 61000-4-2		Criteria A		

This content is subject to change, please refer to specification for more detail.  
FSP reserve the right to change the content without prior notice.

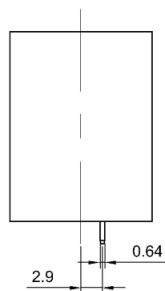
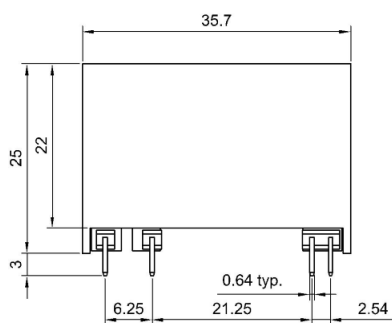
	EFT	IEC 61000-4-4	Criteria A
	Surge	IEC 61000-4-5	Criteria A
1. The "Output voltage tolerance" includes initial voltage accuracy, thermal drift, line regulation and load regulation at rated input voltage and load regulation. 2. Ripple& noise is test with E-Cap 47uF low ESR and 0.1uF MLCC across outputs at 20MHz bandwidth. 3. All specifications valid at nominal input voltage, full load and 25°C after warm-up time unless otherwise stated.			

## RIPPLE & NOISE

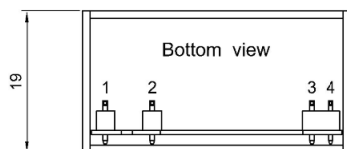
## DERATING CURVE



## MECHANICAL SPECIFICATION

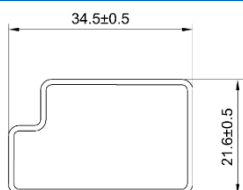


Pin	Single
1	Vin(L)
2	Vin(N)
3	+Vout
4	-Vout



Unit : mm  
Tolerance : ±0.5mm

## PACKAGE



UNIT:mm  
1 Tube = 13 pcs  
Length:520±2mm