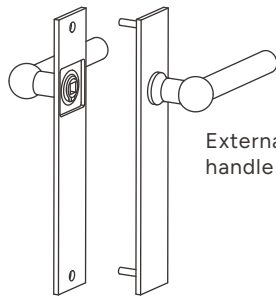


# Sprung handles with backplate

## INSTRUCTIONS

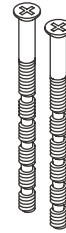
### INCLUDED



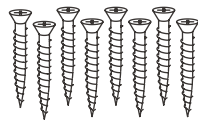
External door  
handle x1



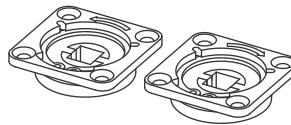
Cardboard  
template x1



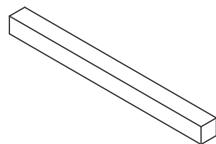
Throughbolt x2



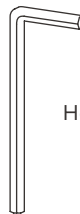
Wood screw x8



Sprung mechanism x2



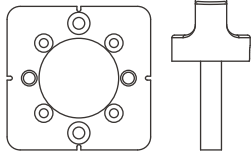
Spindle x1



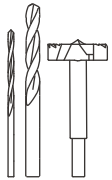
Hex key x1

## Sprung handle with backplate instructions

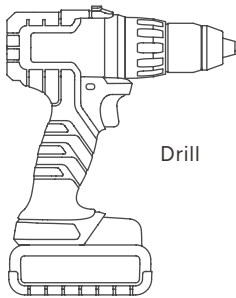
### TOOLS YOU'LL NEED



Door handle installation  
tool (for retrofitting)  
(12678)



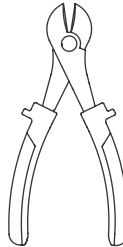
Door handle installation  
drill bits (12041)



Drill

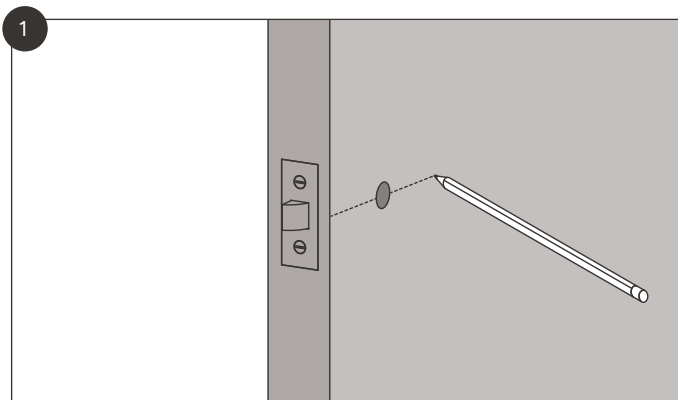


Crosshead screwdriver

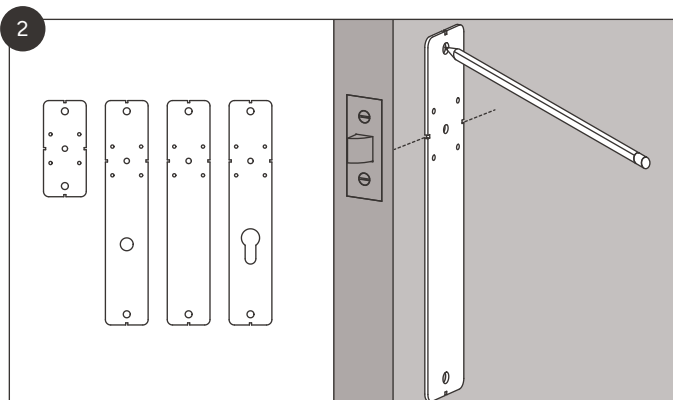


Pliers or clippers

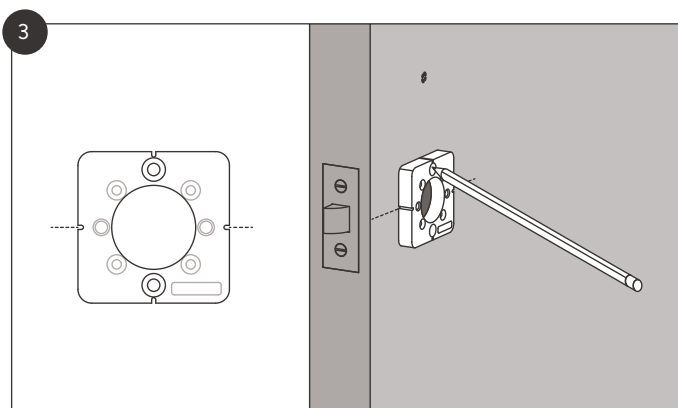
## Sprung handle with backplate instructions



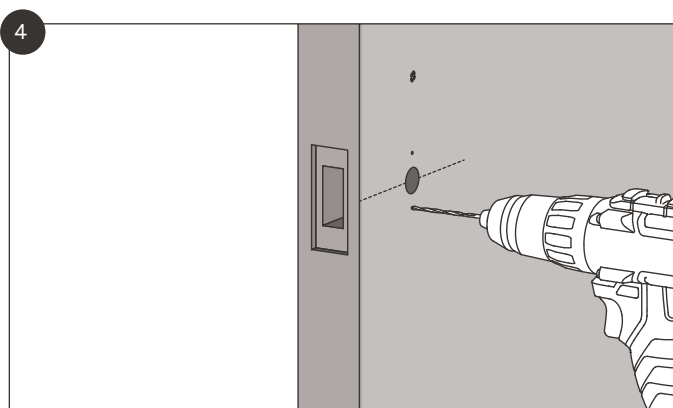
1 Mark a horizontal line with a pencil, square to the edge of the door.



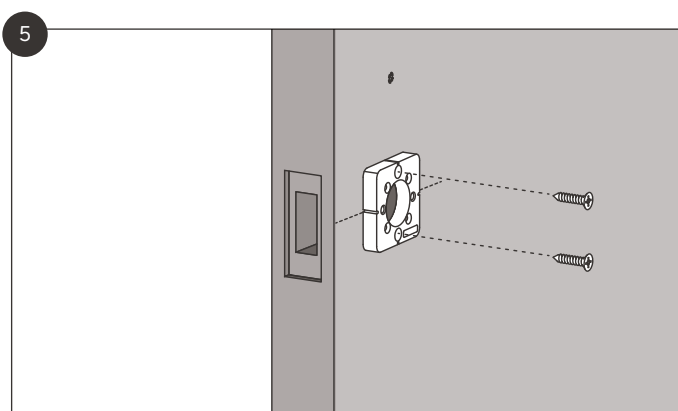
2 Align the notches in the cardboard template with the horizontal line. Mark all required holes, including any lock holes, if desired.



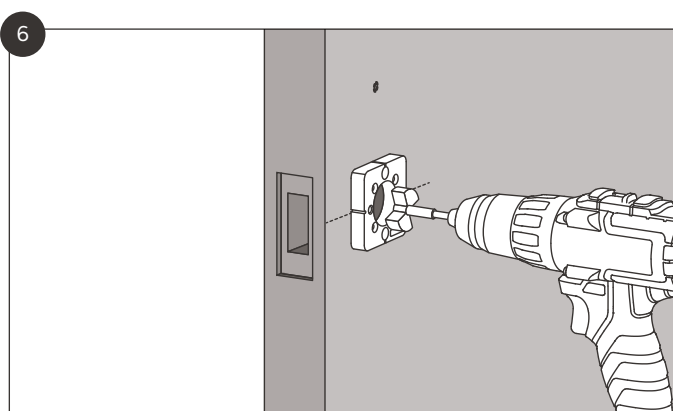
3 Align the installation jig with the horizontal line. Mark the holes shown.



4 Drill all of the marked holes with the 2mm drill bit.

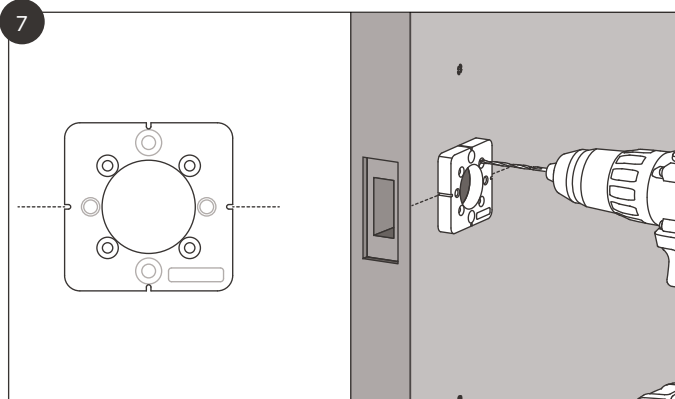


5 Use the pilot holes to screw the installation jig to the door.

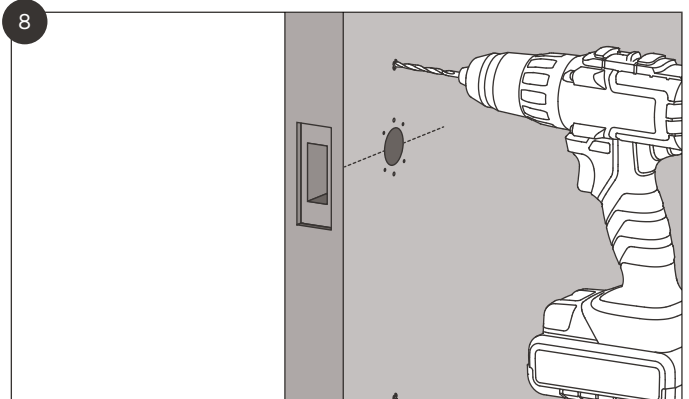


6 Drill a 30mm hole, 8mm deep, into the door.

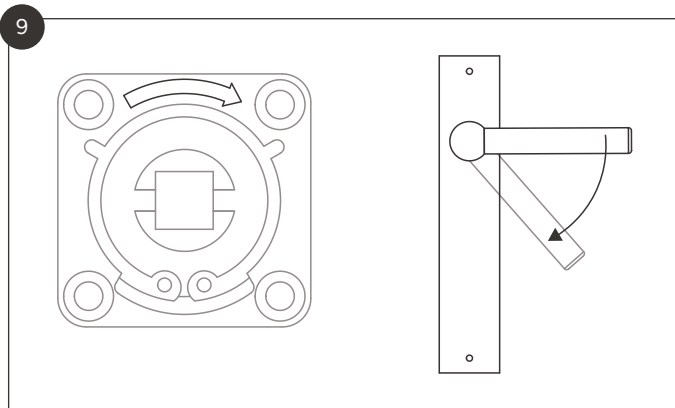
## Sprung handle with backplate instructions



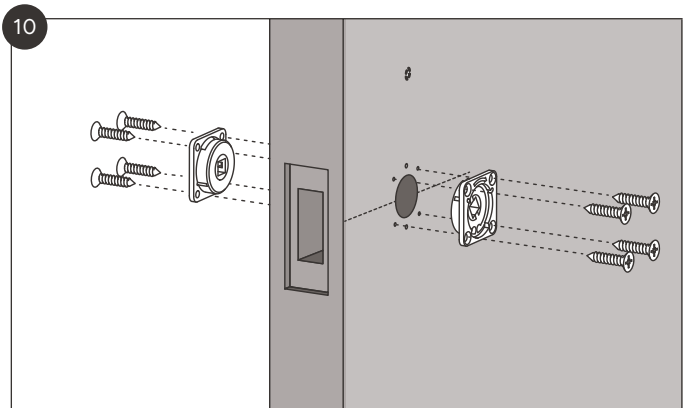
Drill four pilot holes in the positions shown and unscrew the jig from the door.



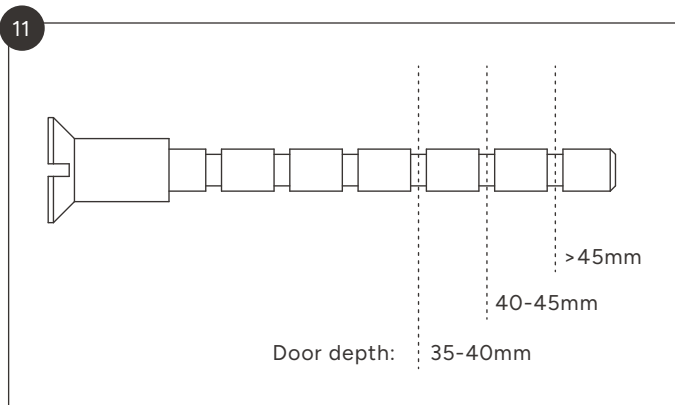
Drill two 6mm through holes in the positions marked. If installing a thumbturn or Euro lock, create a hole for the lock mechanism. Repeat steps 1-8 on the other side of the door.



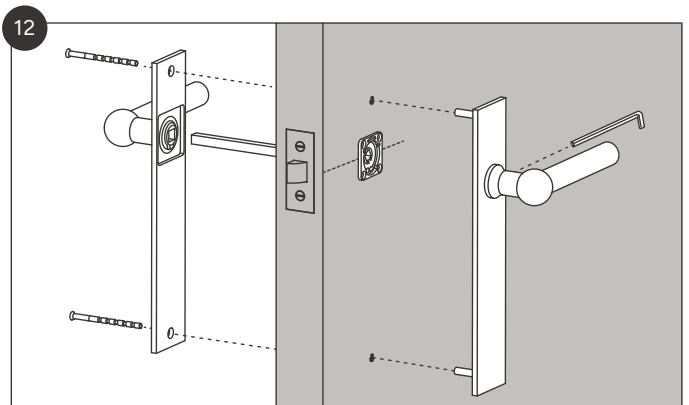
Make sure the handle mechanism is orientated so the arrows point in the direction the handle will turn.



Screw the mechanism to the door using the wood screws provided. **Important: do not use an impact driver as it may irreparably damage the mechanism. Use a handheld screwdriver only.**



Clip the throughbolts down to size in the positions shown, depending on the depth of your door.



Use the throughbolts to fix the internal and external handles to the door. Then tighten the grub screws.