

DREO

Evaporative Air Cooler


USER MANUAL

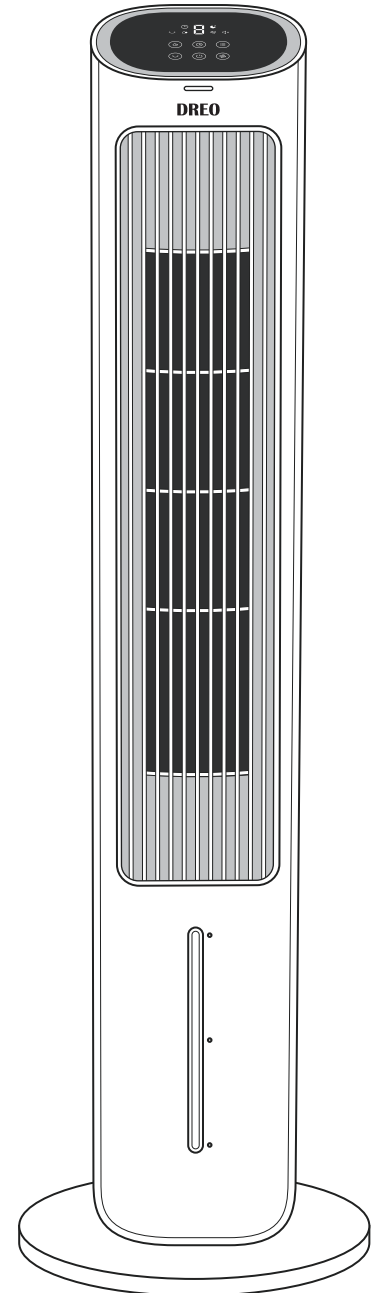
www.dreo.com

Looking for help? Reach out to us to get expert support.

 support@dreo.com  (888) 520-3736  www.dreo.com

Mon - Fri, 9:00 am-5:00 pm PST/PDT

 support@dreo.com
Model: DR-HEC001



Thank You for Choosing Dreo!

*Your support means the world to us
We hope you enjoy our air cooler as much as we did creating it*



Scan or visit dreo.com/warranty

to connect with us and explore top tips and new ideas.
Ask us anything and we're always ready to help.

 support@dreo.com  (888) 520-3736  www.dreo.com

Mon - Fri, 9:00 am-5:00 pm PST/PDT

CONTENTS

IMPORTANT SAFETY INSTRUCTIONS

Important Safety Instructions	02
General Safety	02
Operation Safety	02
Electricity Safety	03

ASSEMBLING YOUR AIR COOLER

Package Contents	05
Assembly Instructions	07

KNOWING YOUR AIR COOLER

LED Display/Control Panel	09
Specifications	09

USING YOUR AIR COOLER

General Operations	11
Getting the Most out of Your Air Cooler	12
Additional Features	13
Remote Control	14
Battery Replacement	14
Filling the Water Tank (2 Methods)	15
Using the Ice Packs (Optional)	16

TROUBLESHOOTING

Troubleshooting	18
-----------------	----

MAINTENANCE & SERVICE

Outer Surface	20
Water Tank	20
Filter on Water Pump	21
User Servicing Instructions (Fuse)	22
Default 12-Month Warranty	23
Extend Your Warranty	23
We're Here to Help!	24

IMPORTANT SAFETY INSTRUCTIONS

IMPORTANT SAFETY INSTRUCTIONS

READ ALL CAUTIONARY MARKINGS ON THE APPLIANCE AND SAFETY INSTRUCTIONS IN THE USER MANUAL BEFORE USE.



Do not cover the air inlet and outlet while in operation.



Do not use the cooler near flammables and combustibles.

General Safety

1. Cleaning and maintenance shall not be performed by children without supervision.
2. Use the appliance as described in the user manual only. Any other use not recommended in the user manual may cause fire, electrical shock, or personal injury.
3. This appliance is not intended for use by persons (including children) with reduced physical, sensory or mental capabilities or lack of experience and knowledge, unless they have been given supervision or instruction concerning use of the appliance by a person responsible for their safety. Children should be supervised to ensure that they do not play with the appliance.
4. Do not place the unit under high temperature or low temperature. In summertime, the water may be deteriorated and cause odor, please add freshwater in time. In wintertime when indoor temperature is below 32°F, please add warm water into the humidifier if you want to use it. After operation, please use a towel to dry the water tank.

Operation Safety

1. Place the appliance on a flat, dry surface before use.
2. Do not immerse in water and any other liquids.
3. Do not use the appliance until the base is installed.
4. Do not insert your fingers, pencil and any other objects into the grilles under any circumstances.
5. Do not dismantle, repair, or modify. All servicing should be performed by qualified personnel.
6. When operating the product, do not place the power cord at the air outlet or let the power cord connect the surface of product which is close to the air outlet.
7. After the unit is filled with water, don't tilt or crash it when placing or moving the unit. If it is necessary to move the unit, please move it slowly to avoid overflowing. Tilting the unit during operation is prohibited. If the product is tilted and there is water in it, pull off the power plug immediately. Wait until the unit is completely dry and then you may turn on the unit. Or you may contact professional after-sales personnel to deal with it.
8. When turning on the humidification function, do not operate it at the enclosed space for a long time to prevent high humidity.

- 9 Include instructions pertaining to a risk of fire, electric shock, or injury to persons, for cleaning and user-maintenance, such as lubrication.
10. Warn the user to unplug or disconnect the appliance from the power supply before serving.

Electricity Safety

1. Do not bend the power cord or put heavy objects on the power cord.
2. Make sure that the voltage of your electricity supply is the same as that indicated on the appliance.
3. Always unplug before cleaning or leaving the appliance unused for a long period of time. Keep your hands dry when plugging/unplugging.
4. Do not operate the appliance with a damaged cord or plug or after the appliance malfunctions, has been dropped or damaged in any manner
5. Do not run the cord under carpeting, furniture or electrical devices. Do not cover the cord with throw rugs, runner rugs and other similar rugs. Keep the cord away from traffic areas to avoid tripping hazards.
6. **WARNING:** To reduce the risk of fire or electric shock, do not use this fan with any solid-state speed control device.
7. This appliance employs overload protection (fuse). A blown fuse indicates an overload or short-circuit situation. If the fuse blows, unplug the product from the outlet. Replace the fuse as per the user servicing instructions and check the appliance. If the replacement fuse blows, a short-circuit may be present and the appliance should be discarded or returned to an authorized service facility for examination and/or repair.
8. This appliance has a polarized plug (one blade is wider than the other). To reduce the risk of electric shock, this plug is intended to fit in a polarized outlet only one way. If the plug does not fit fully in the outlet, reverse the plug. If it still does not fit, contact a qualified electrician. Do not attempt to defeat this safety feature.

FOR HOUSEHOLD USE ONLY READ AND SAVE THESE INSTRUCTIONS



Gentle Reminder:

Check the appliance regularly and refer to the troubleshooting section in page 18 or contact our customer support if it shows any of the following signs:

- Power cord or plug is damaged.
- Loud noise, unusual smell or excessive heat.

02

ASSEMBLING YOUR AIR COOLER

Package Contents



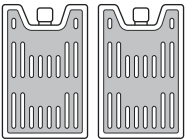
Remote Control
(battery included)



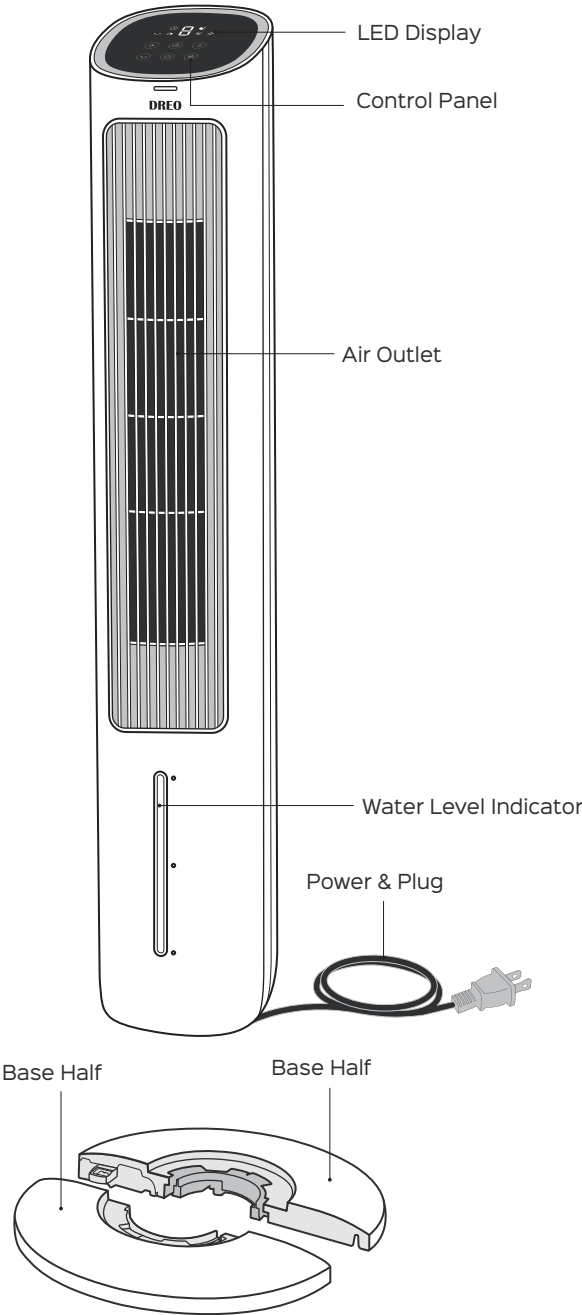
User Manual



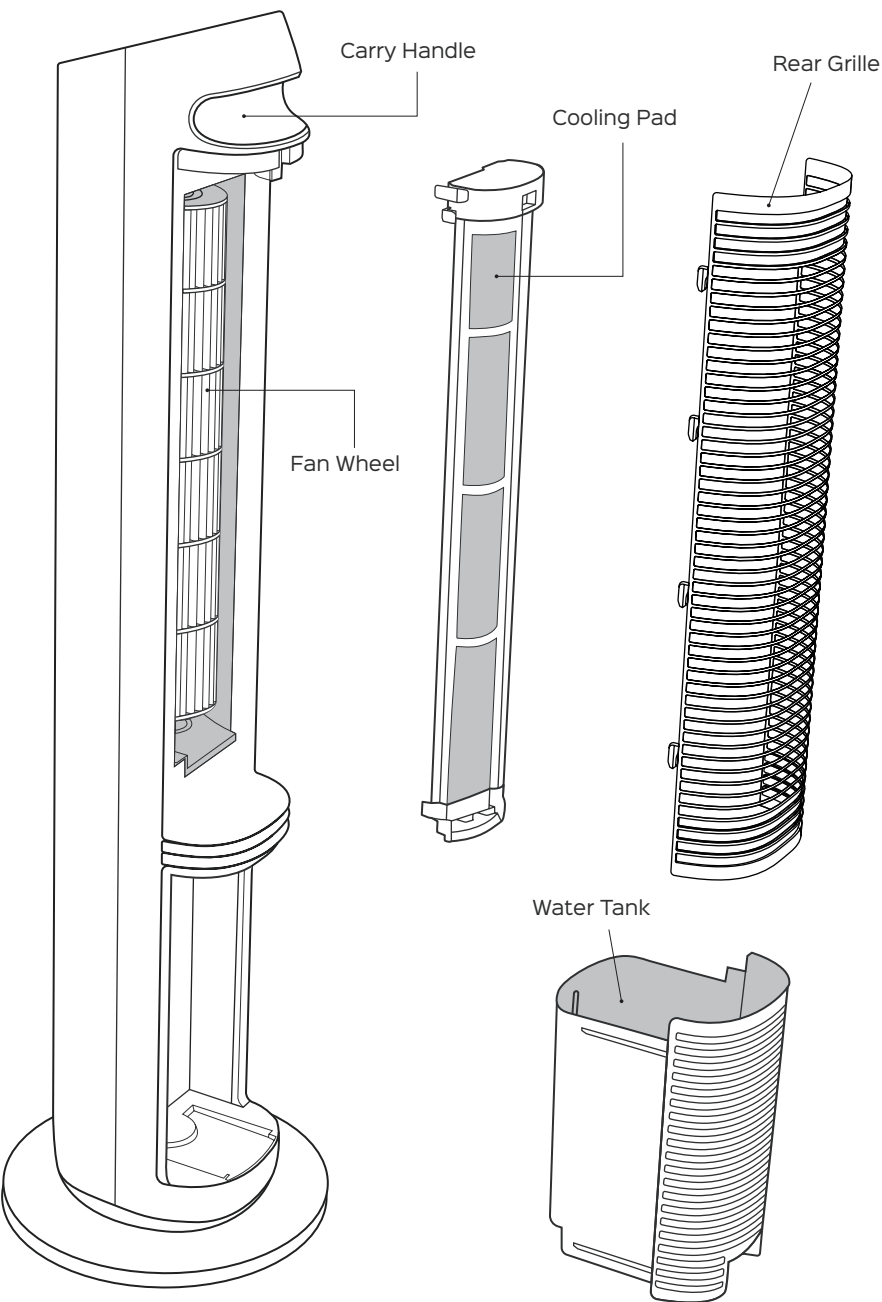
Quick Start Guide



Ice Packs

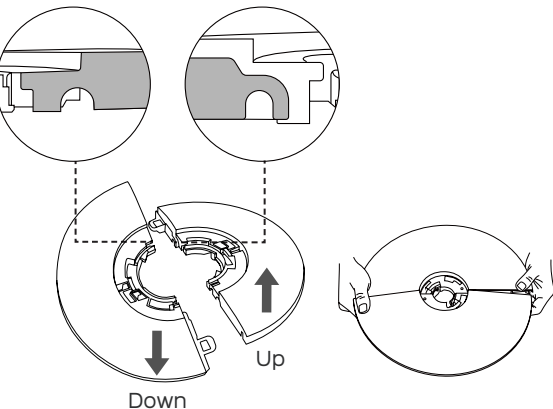


Package Contents

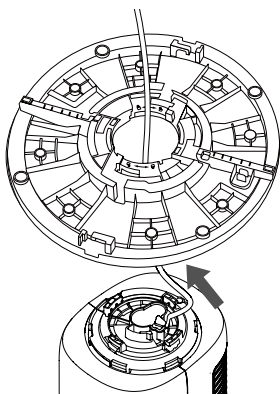


Assembly Instructions

When using the appliance for the first time, remove the wraps and attach the parts by following the steps below.



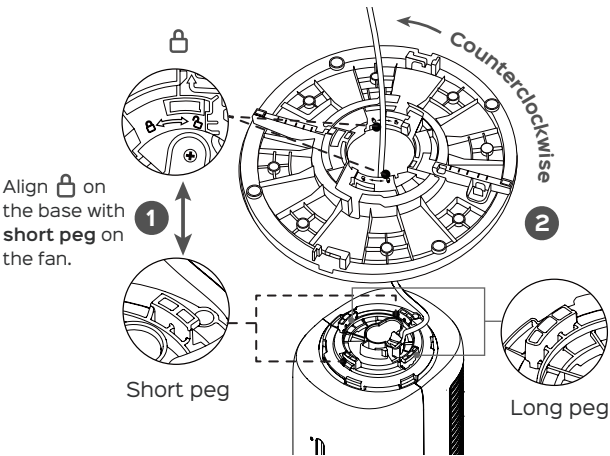
1. Insert the edges of both base halves into each other and snap together until they click.




2. Run the cord through the center hole.

03

KNOWING YOUR AIR COOLER



3. Insert the base onto the bottom of the appliance by aligning the pegs (short) and slots(beneath the  sign) and twisting the base counterclockwise until it clicks.

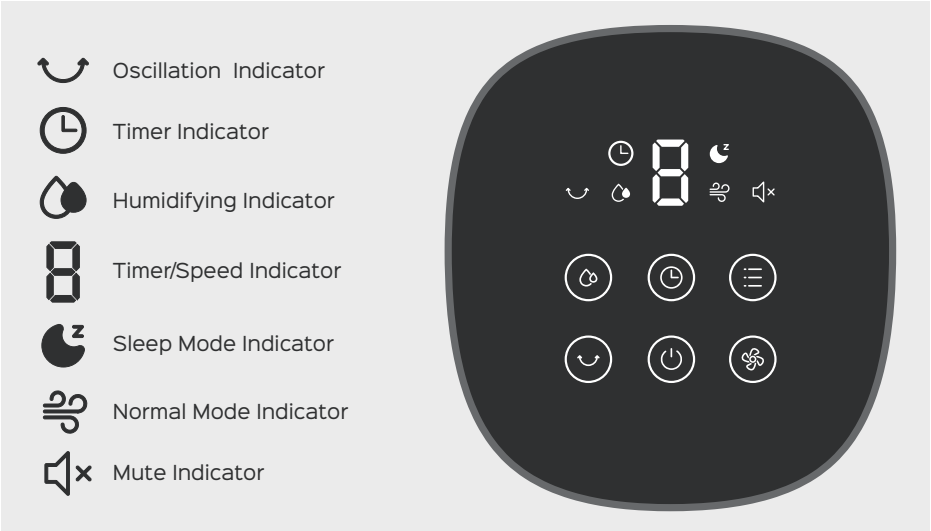
4. Thread the cord through the rear cord keepers before putting the air cooler upright.





CAUTION:


- Do not operate the air cooler if the base has not been installed.
- Make sure to thread the power cord through all cord keepers.


LED Display / Control Panel





**Humidify Button**
Select to increase air humidity

**Oscillation Button**
Adjust airflow direction

**Timer Button**
Set a time for auto on or off (0-7h)

**Power Button**
Turn power on/off

**Mode Button**
Short press to switch between normal and sleep mode

**Fan Speed Button**
Adjust airflow volume (1-3 levels)

Specifications

Model	DR-HEC001
Input	AC 120V 60Hz
Rated Power	50W
Battery Type	CR2025 3V

04

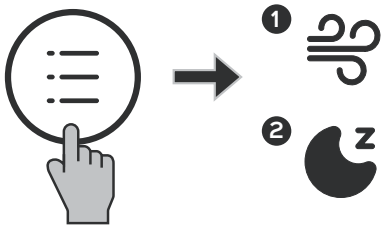
USING YOUR AIR COOLER

General Operations

1. Press the power button to turn on the air cooler.



2. Press the mode button to choose a working mode.



1 Normal Mode

- Standard performance with constant airflow.
- Display turns off automatically after 1 minute.

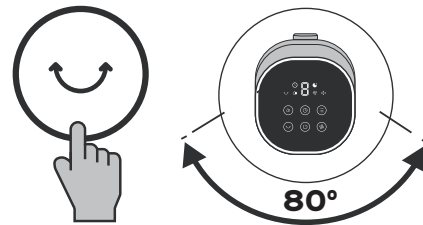
2 Sleep Mode

- Display turns off automatically after 5 seconds.
- Fan speed decreases by one level every 30 minutes. Note that the fan speed can auto decrease by two levels only and will remain constant if it reaches level 1:
For level 3: 3→2→1
For level 2: 2→1
For level 1: 1

3. Press the fan speed button to adjust the airflow volume.



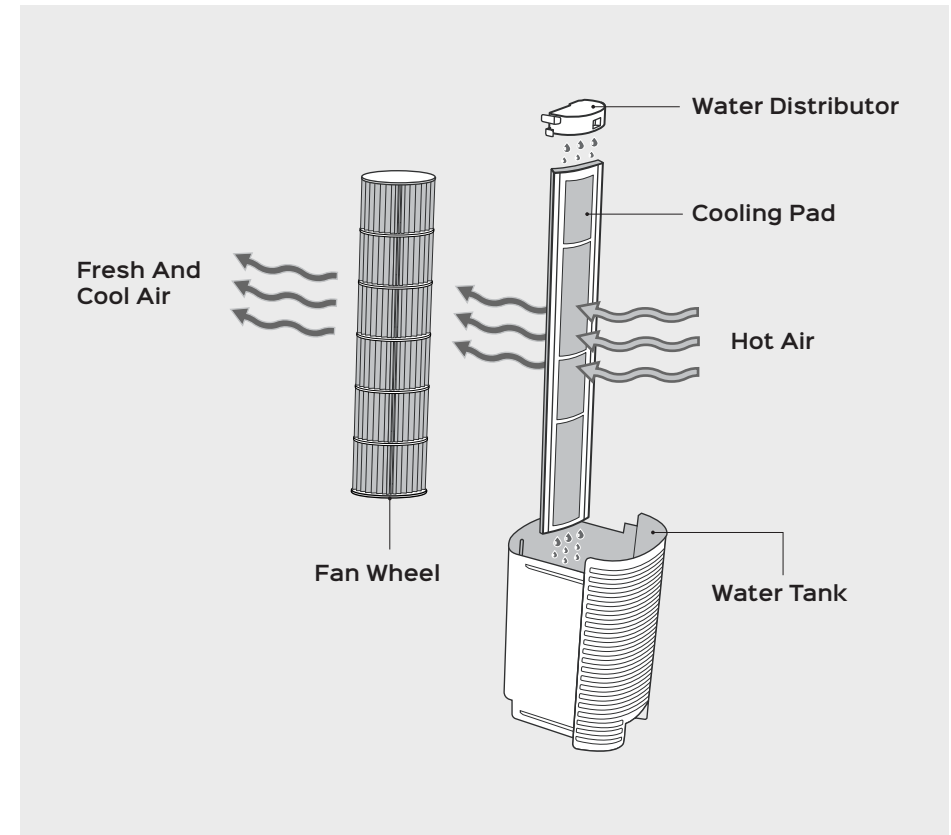
4. Press the oscillation button to change the airflow direction.



5. Press the power button to turn off the air cooler.



Getting the Most out of Your Air Cooler



Not an air conditioner

This air cooler cools the air through the evaporation of water. When the hot air passes through the cooling pad, the flowing water extracts the heat and starts to evaporate into fresh and cool air, released by the fan wheel in front.

- Add ice in a moderate amount into the water tank for better cooling.
- Remove any tall obstacles that might block the airflow from the cooler.
- Combine with your AC unit to get cooler air throughout the room.
- Use as a tower fan with the humidify function switched off.



Additional Features

Auto On/Off Timer (1-7H):

- When on standby, press to set a timer for auto start.
- When running, press to set a timer for auto shutoff.
- To cancel, set the timer to 0 hour.



Mute:

- **Method 1:** Press the mute button  on the remote control to turn on/off mute.
- **Method 2:** Long press the mode button  on the control panel to turn on/off mute.

Low Water Alert:

- When the humidifying indicator keeps blinking, please add water into the tank and re-enable the humidity function.
- Low water alert will also be activated when the water tank is withdrawn during humidifying.
- Low water alert will not be activated when the humidify function is off.

Display Auto Off:

- In normal mode, display will turn off automatically after 1 minute.
- In sleep mode, display will turn off automatically after 5 seconds.
- Wake up the display with any non-power button.

Memory:

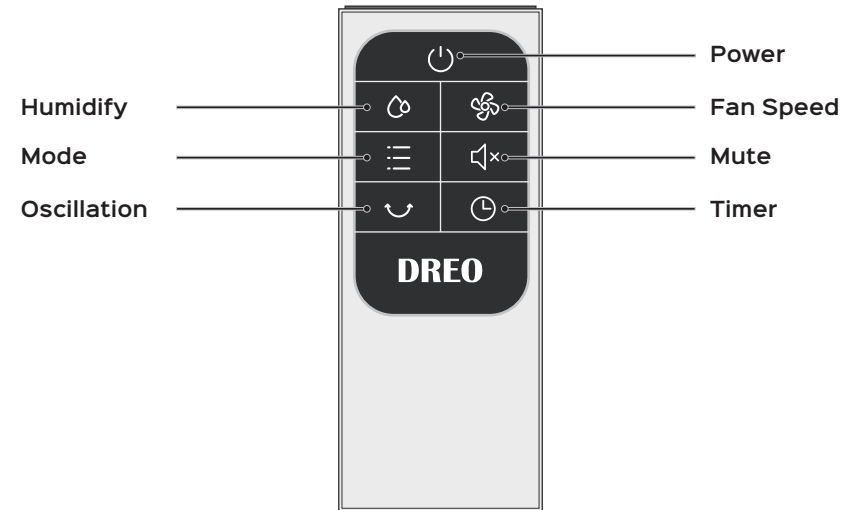
- If you turn off the appliance, it will return to the previous settings (except for the timer setting) once you press the power button again.

Note: If the cooler is unplugged or loses power, the mute function will not be remembered.

Auto Shut Off After 15 Hours:

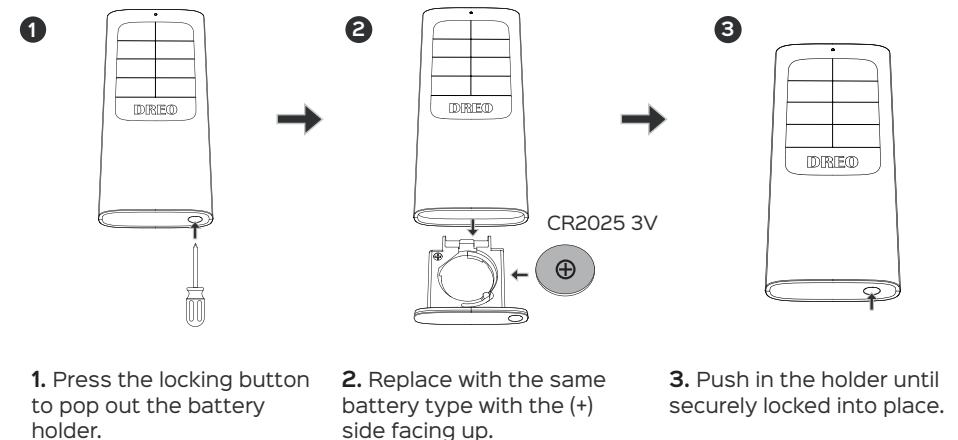
- For safety reason, the air cooler will shut off automatically after continuously running for 15 hours.

Remote Control



Battery Replacement

Note: If the indicator on the remote control doesn't turn on any more, please consider replacing the battery.





WARNING:

- Chemical Burn Hazard
- Keep batteries away from children.

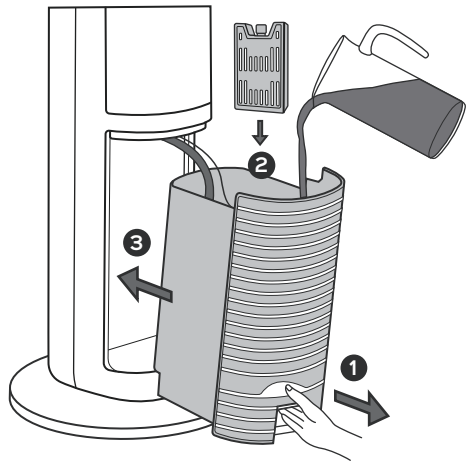
- This product contains a lithium button/coin cell battery. If a new or used lithium button/coin cell battery is swallowed or enters the body, it can cause severe internal burns and can lead to death in as little as 2 hours. Always completely secure the battery compartment. If the battery compartment does not close securely, stop using the product, remove the battery, and keep it away from children. If you think batteries might have been swallowed or placed inside any part of the body, seek immediate medical attention.
- The batteries must be disposed of properly, including keeping them away from children. Even used cells may cause injury.

Filling the Water Tank (2 Methods)

Caution:

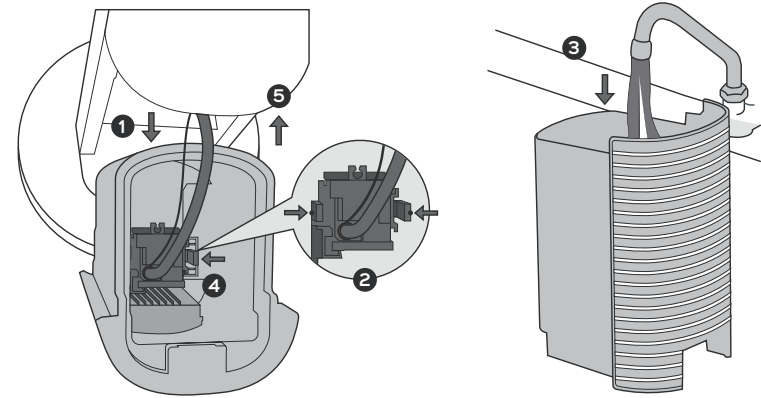
Disconnect from power source before filling the water tank.

Method 1:



1. Press between the recesses and horizontally pull out.
2. Fill the tank with clean water, up to the max indicator.
3. Return the water tank to its original position.

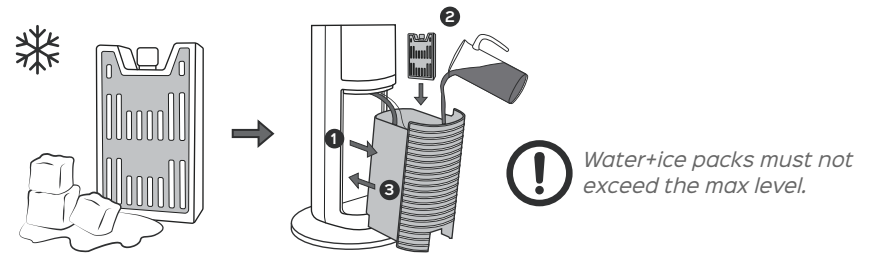
Method 2:



1. Press between the recesses and horizontally pull out.
2. Press the black tabs inwards to release the water pump.
3. Fill the tank under a water supply, up to the max level.
4. Align and lock the tabs back into place.
5. Return the water tank to its original position.

Using the Ice Packs (Optional)

For better cooling, this air cooler includes 2 ice packs that can be frozen and used repeatedly. Turn off the appliance and unplug before adding or removing the ice packs.



1. Freeze in the refrigerator for at least 4 hours.
2. Pull out the water tank and add in the ice packs.
3. Push the water tank back into place.



WARNING:

- Do not open or puncture the ice pack.
- Do not eat or drink the contents inside.

TROUBLESHOOTING

TROUBLESHOOTING

Q1: My air cooler won't turn on.

A1: Make sure that the cord is connected to a powered outlet and the mains voltage corresponds with the voltage indicated on the cooler.

Q2: My air cooler is shaky and wobbling.

A2: Place the air cooler on a flat, level surface. Incorrect assembly might also cause shakiness. Please refer to the assembly instructions in page 7. Note that the power cord must be run through all keepers.

Q3: My air cooler is making vibration and noise.

A3: Place the air cooler on a flat, level surface. Be sure not to insert anything into the grilles.

Q4: My air cooler is not cool enough.

A4: Turn on the humidify function and ensure that the water is above the minimum mark. Put ice packs into the tank for better cooling. Note that this is not an air conditioner. Combine with your AC unit to circulate air more efficiently.

Q5: Water is dripping from my air cooler.

A5: Ensure the proper installation of the cooling pad, rear grille, and water tank. The water must not exceed the max level.

Q6: My humidifying indicator is blinking, but I already added water into the tank.

A6: Make sure to return the tank securely in place and re-enable the humidify function. Note that when the water is low or the tank is withdrawn during humidifying, the humidify function will be disabled for safety protection.

If your problem is not listed or still persists, please contact our customer support at support@dreo.com.

MAINTENANCE & SERVICE



CAUTION:

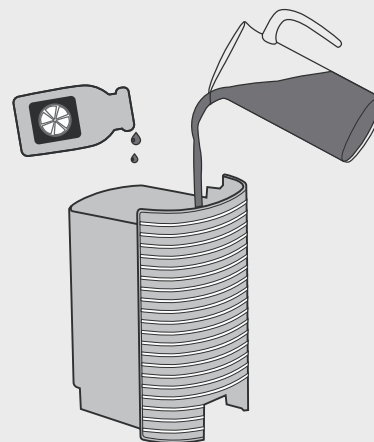
- Always unplug before any cleaning or maintenance.
- Do not immerse in water or get water inside the motor.
- Do not use any chemical agents when cleaning the cooler.
- Store in a cool, dry place and cover it to protect from dust.

Outer Surface

Gently wipe off the dust with a soft, damp cloth.

Water Tank

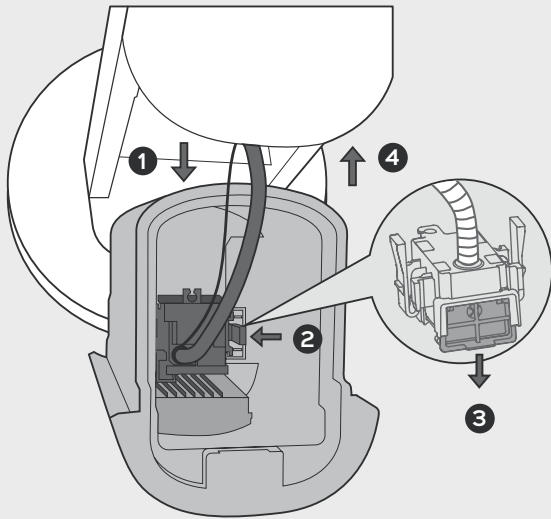
Clean mineral buildup in the water tank at least once every two weeks to maintain proper hygiene.



1. Detach the water pump from the water tank (see page 16).
2. Remove the water tank and clean with cleaning agents.
3. After the cleaning, lock the water pump back into place. Return the water tank to its original position.

Filter on Water Pump

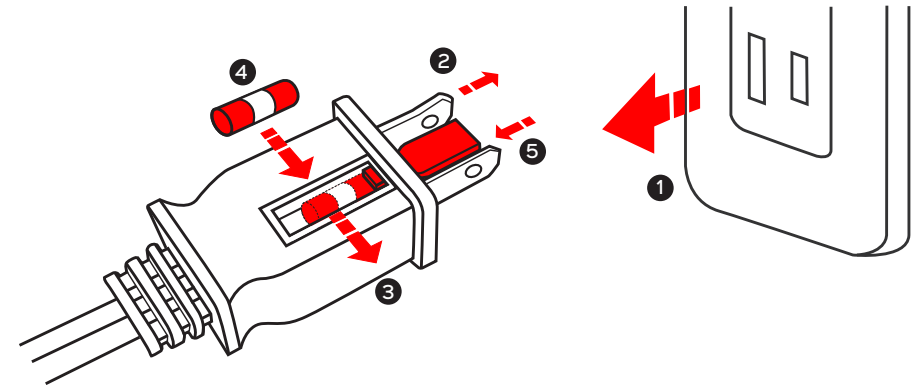
To maintain optimal performance of the water pump, please clean the filter on a regular basis.



1. Pull out the water tank.
2. Press the black tabs inwards to release the water pump.
3. Slide out the filter from the pump and rinse it with water.
4. Slide the filter back and return the water tank to its original position.

User Servicing Instructions (Fuse)

This appliance features a fused safety plug that protects against overload or short-circuit situations. If the fuse blows, please follow the below instructions or consult a qualified electrician.



1. Grasp plug and remove from the receptacle or other outlet device. Do not unplug by pulling on cord.
2. Open fuse cover. Slide open fuse access cover on top of attachment plug towards blades.
3. Remove fuse carefully. Push the fuse from the other side to remove the fuse.
4. Risk of fire. Replace fuse only with 2.5 Amp, 125 Volt fuse.
5. Close fuse cover. Slide closed the fuse access cover on top of attachment plug.

⚠ WARNING

Risk of fire. Do not replace attachment plug. Contains a safety device(fuse) that should not be removed. Discard product if the attachment plug is damaged.

Default 12-Month Warranty

This appliance is covered by Dreo warranty for 12 months from the date of its original purchase. During this period, in the unlikely event that this appliance is defective or malfunctions due to faulty workmanship or manufacturing, you will get exchange at no cost.

Extend Your Warranty

Extend your warranty by registering your new appliance on our website <https://dreo.com/warranty>. This will confirm ownership of your Dreo appliance in the event of expiry of the warranty period, and enable us to contact you if necessary.


The warranty will not apply in cases of:

- Accident, misuse, or repairs performed by unauthorized personnel.
- Any unit that has been tampered with or used for commercial purposes.
- Normal wear and tear of wearable parts.
- Use of force, damage caused by external influences.
- Damage caused by non-observance of the User Manual, e.g. connection to an unsuitable mains supply or noncompliance with the instructions.
- Defects caused by or resulting from damages from shipping or from repairs, service, or alteration to the product or any of its parts that have been performed by a repair person not authorized by Dreo.

We can only provide after-sales service for products that are sold by Dreo or Dreo authorized retailers and distributors. If you have purchased the appliance from a different place, please contact your seller for return and warranty issues.

We're Here to Help!

If you have any questions or encounter any issues regarding your Dreo appliance, feel free to contact our Customer Support anytime. Your satisfaction is our first priority!

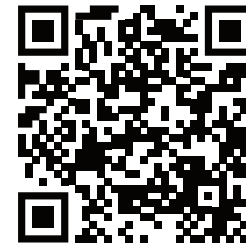
 (888) 520-3736

 www.dreo.com

 support@dreo.com

Mon - Fri, 9:00 am-5:00 pm PST/PDT

** Please have your order confirmation number ready before contacting Customer Support.*



Scan or visit us on Facebook

to connect with us and explore top tips and new ideas.
Ask us anything and we're always ready to help.



 www.dreo.com

 Shenzhen Hesung Innovation Technology Co., LTD

 26F, Bldg A7, Creative City, Shenzhen, China



MADE IN CHINA



Intertek
3189196