

Safety Instructions

- This product is rated as IP65 Waterproof. It can be used outdoors but cannot be immersed in water.
- The control box and power adapter are rated as IP65 and IP44. They can be used outdoors but cannot be immersed in water.
- Tighten up the waterproof cap before installing the lights.
- The internal light sources of the string light cannot be replaced. If the light sources sustain damage, the product should be replaced.
- Do not allow children to assemble and install this product without adult supervision.
- Avoid installing this product near major heat sources.
- External dimmers cannot be used with this product.
- Use this product with the provided power adapter only.

Introduction

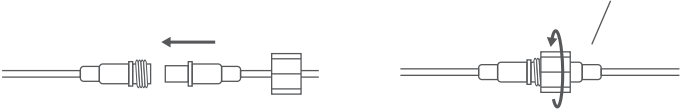
Thanks for choosing Govee LED Bulb string Lights. This bulb string light and control box has an IP65 waterproof rating,making them ideal for outdooe use. Using Govee Home App, you can adjust its color and brightness.

What You Get

Item	Quantity
Bulb string Light	1
Adapter & Control Box	1
User Manual	1
Service Card	1

Controlling Strip Lights in Series

1. Connect the two strip lights as shown in the image. 2. Firmly screw the wire nut.



Note: Only 2 bulb strip lights can be connected in a series.

Installing Your Device

Installation Steps

Use the hook to hang the light bulbs onto the rope.



Note: When installing the lights, do not leave more than 2 bulbs off the rope as it may affect stability.

Airing Your Device with Govee Home App

What You Need:

- A smartphone or tablet running iOS or Android.
- ➊ Download Govee Home App from App Store (iOS) or Google Play (Android).
 - ➋ Enable your smartphone’s Bluetooth.
 - ➌ Open the app, tap the "+" icon in the top right corner and search for "H7029".
 - ➍ Tap the device icon and follow the on-screen instructions to complete pairing.



Specifications

Power Input (Adapter)	AC 100-240V 50/60Hz 0.8A Max
Power Output (Adapter)	DC 12V/2A
Length	24ft
Number of Bulbs	8
Light Color	RGBW
Waterproof	Adapter (IP44) Control Box (IP65) Bulb String Lights (IP66)
Working Temperature	-20~50°C/-4~122°F

Troubleshooting

- ➊ **Cannot connect to Govee Home App.**
 - Make sure the device is powered on.
 - Make sure your smartphone’s Bluetooth has been enabled.
 - Position your smartphone close to the control box, then try connecting again.
- ➋ **One or more string lights fail to light up.**
 - Remove the light and then reattach it to the power cable. Also unplug the power adapter and then plug back into power.
 - If the problem persists, please contact Govee Customer Service.

Customer Service

- 🛠 Warranty: 12-Month Limited Warranty
- 🔍 Support: Lifetime Technical Support
- ✉ Email: support@govee.com
- 🌐 Official Website: www.govee.com
- 📺 @Govee 📷 @govee_official 🎵 @govee.official
- 🐦 @Goveeofficial 📘 @Govee.smarthome



User Manual

Model: H7029
Govee LED Bulb String Lights

FCC and IC Radiation Exposure Statement

This equipment complies with FCC and IC radiation exposure limits set forth for an uncontrolled environment. This equipment should be installed and operated with minimum distance 20cm between the radiator & your body.

Lors de l'utilisation du produit, maintenez une distance de 20 cm du corps afin de vous conformer aux exigences en matière d'exposition RF.

This Class B digital apparatus complies with Canadian ICES-005.

Cet appareil numérique de la classe B est conforme à la norme NMB-005 du Canada.

Responsible party :

Name: GOVEE MOMENTS(US) TRADING LIMITED
Address: 2501 Chatham Rd Suite R Springfield IL 62704
Email: support@govee.com
Contact information: <https://www.govee.com/support>

Govee is a trademark of Shenzhen Intellirocks Tech. Co., Ltd.
Copyright ©2021 Shenzhen Intellirocks Tech. Co., Ltd. All Rights Reserved.

FCC and ISCED Canada Statement

This device complies with Part 15 of the FCC Rules and Industry Canada licence-exempt RSS standard(s). Operation is subject to the following two conditions:

(1) This device may not cause harmful interference, and (2) This device must accept any interference received, including interference that may cause undesired operation.

Warning: Changes or modifications not expressly approved by the party responsible for compliance could void the user's authority to operate the equipment.

Le présent appareil est conforme aux CNR d'Industrie Canada applicables aux appareils radio exempts de licence. L'exploitation est autorisée aux deux conditions suivantes :

(1) l'appareil nedit pas produire de brouillage, et
(2) l'utilisateur de l'appareil doit accepter tout brouillage radioélectrique subi, même si le brouillage est susceptible d'en compromettre le fonctionnement."

NOTE: This equipment has been tested and found to comply with the limits for a Class B digital device, pursuant to Part 15 of the FCC Rules.

These limits are designed to provide reasonable protection against harmful interference in a residential installation. This equipment generates uses and can radiate radio frequency energy and, if not installed and used in accordance with the instructions, may cause harmful interference to radio communications. However, there is no guarantee that interference will not occur in a particular installation. If this equipment does cause harmful interference to radio or television reception, which can be determined by turning the equipment off and on, the user is encouraged to try to correct the interference by one or more of the following measures:

1. Reorient or relocate the receiving antenna.
2. Increase the separation between the equipment and receiver.
3. Connect the equipment into an outlet on a circuit different from that to which the receiver is connected.
4. Consult the dealer or an experienced radio/TV technician for help.



Govee Home App

For FAQs and more information,
please visit: www.govee.com