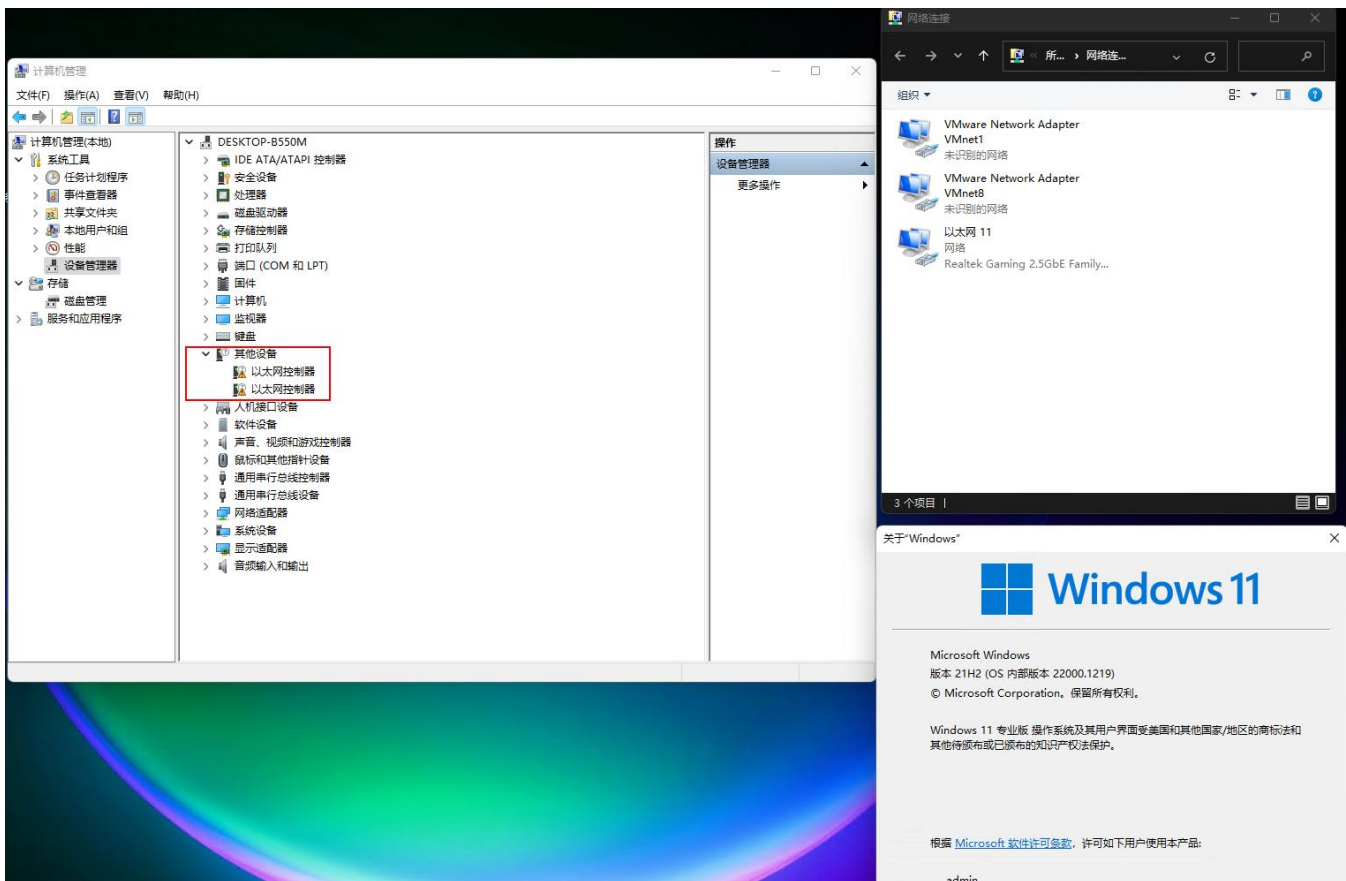


Installation Guide for Windows 11 Driver on X520/X540

Because Intel has not provided a Windows 11 driver for the X520/X540 network card, the Windows 10 driver cannot be installed by double-clicking in a Windows 11 system. Our company has tested and found that it is possible to manually update the Windows 10 driver, and the driver can be successfully installed and used in the test. However, it is important to note that the driver update process may void the product warranty.

Here is an example of how to install the driver for an X520-10G-2S network card in a Windows 11 system:

- 1、Insert the network card into the host machine and turn on the host machine to boot into the Windows 11 system.
- 2、Open the Device Manager in the Windows 11 system and check if the Ethernet Controller is recognized. As shown in the image below, the device is recognized by Windows 11:



Explanation: If the Ethernet Controller is not recognized, it means that the host machine is not recognizing the network card chipset. You need to check if the network card is properly inserted and connected, and also consider trying to replace the card in a different socket to test if the issue is with the card or the socket.

- 3、Download the Windows 10 driver for the X520 network card from the Intel website or the included CD from the network card manufacturer to a local hard drive.

Note : Intel driver download :
<https://www.intel.com/content/www/us/en/download/18293/intel-network-adapter-driver-for-windows-10.html>

Intel® Network Adapter Driver for Windows® 10

ID	Date	Version
18293	8/9/2022	27.6 (Latest) ▾

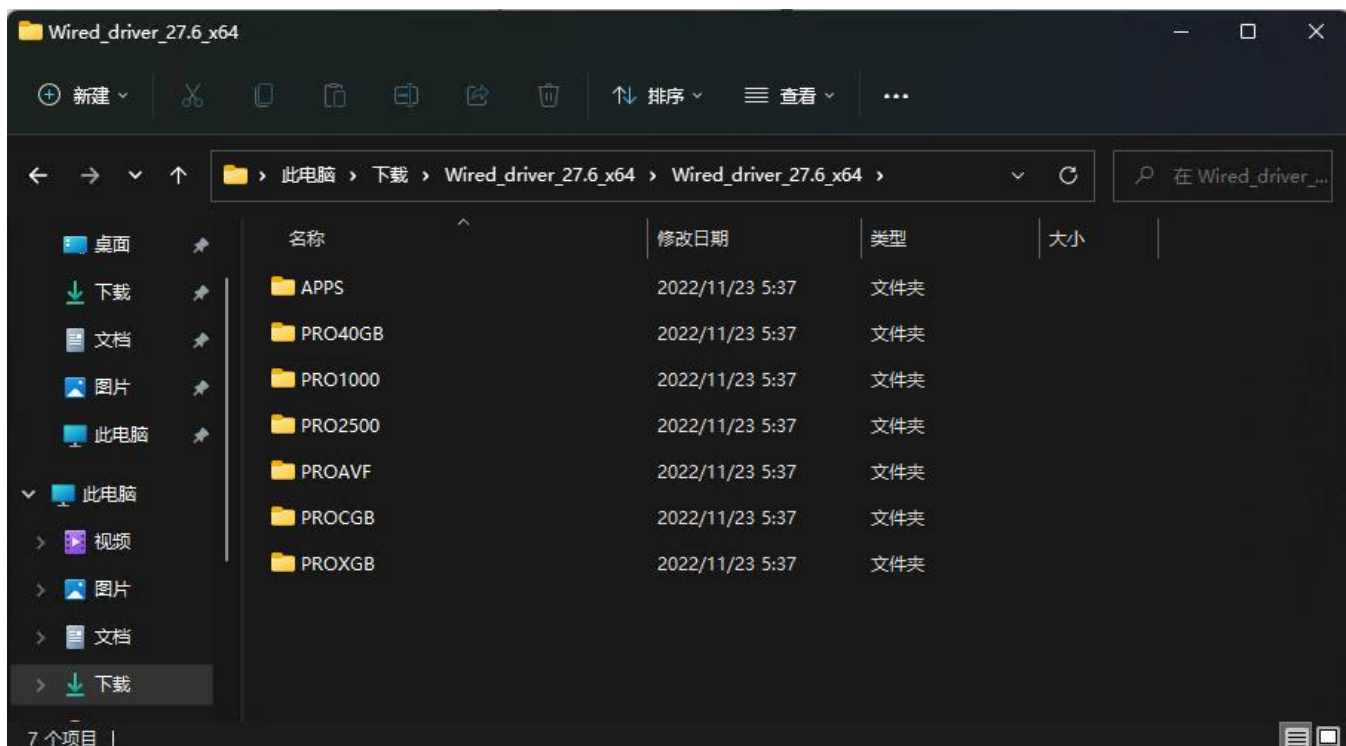
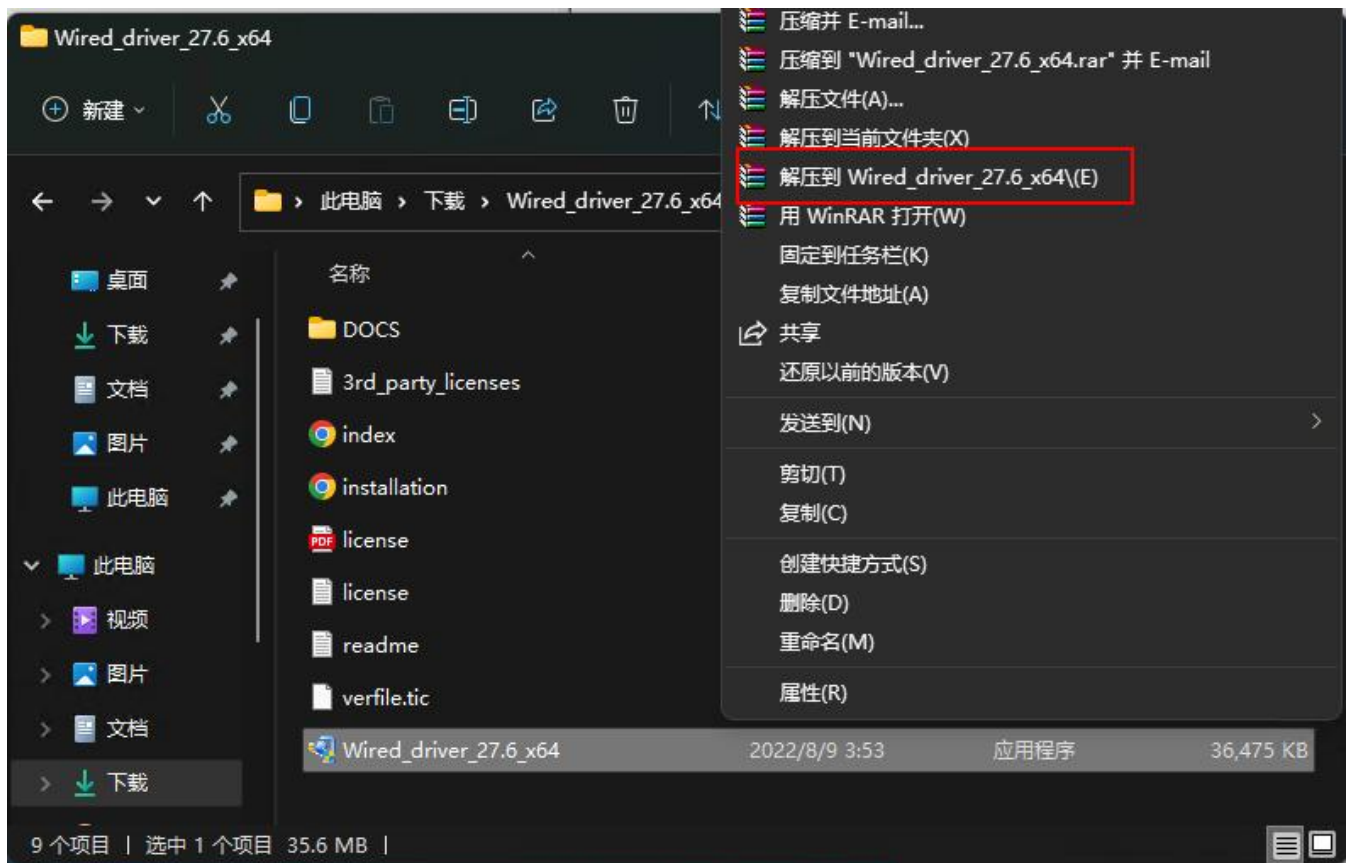
Introduction

Installs the Intel® Network Adapter drivers release 27.6 for Windows® 10

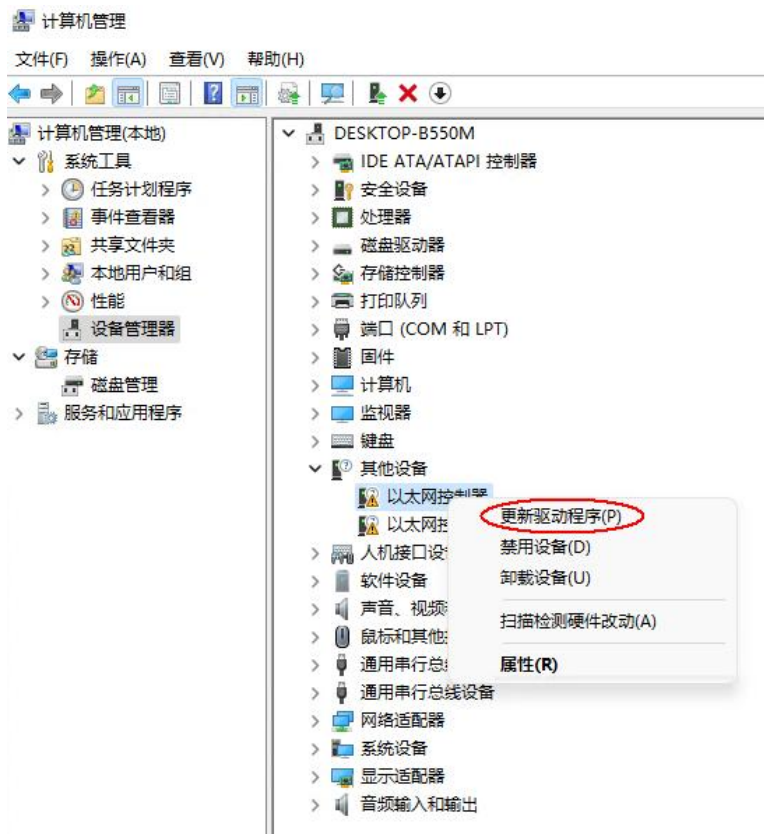
Available Downloads

Download Wired_driver_27.6_32.zip	Windows 10 Family* Size: 11.4 MB SHA1: 1F6FED0E9E6C048EEDAA55DF44CA899783C9227D
Download Wired_driver_27.6_x64.zip	Windows 10 Family* Size: 37.4 MB SHA1: 69B43E87BF907975F474B7D43B8EDE51CC85B6BA
Download Wired_PROSet_27.6_32.zip	Windows 10 Family* Size: 29.4 MB SHA1: 2788AFEE2BE81D51F9F62384349EB464A96DDB0E
Download Wired_PROSet_27.6_x64.zip	Windows 10 Family* Size: 33.1 MB SHA1: AAECAD9F57B4A91450DC083A4B1029B3EA1149CB

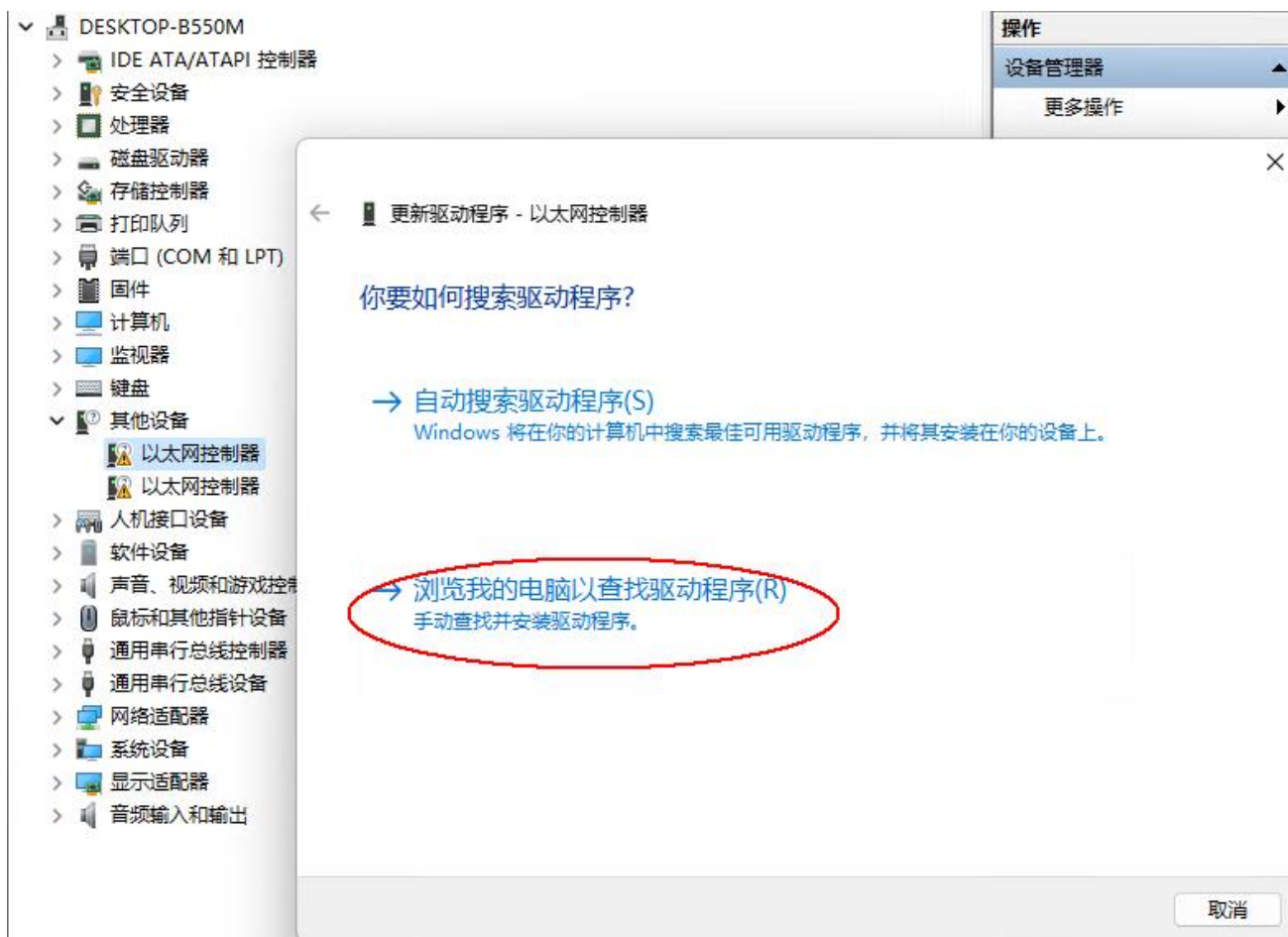
- 4、Unzip the downloaded Wired_driver_xxx_x64.zip file and extract the Wired_driver_xxx_x64.exe file from the resulting folder. Extract the Wired_driver_xxx_x64.exe file again from the resulting folder.



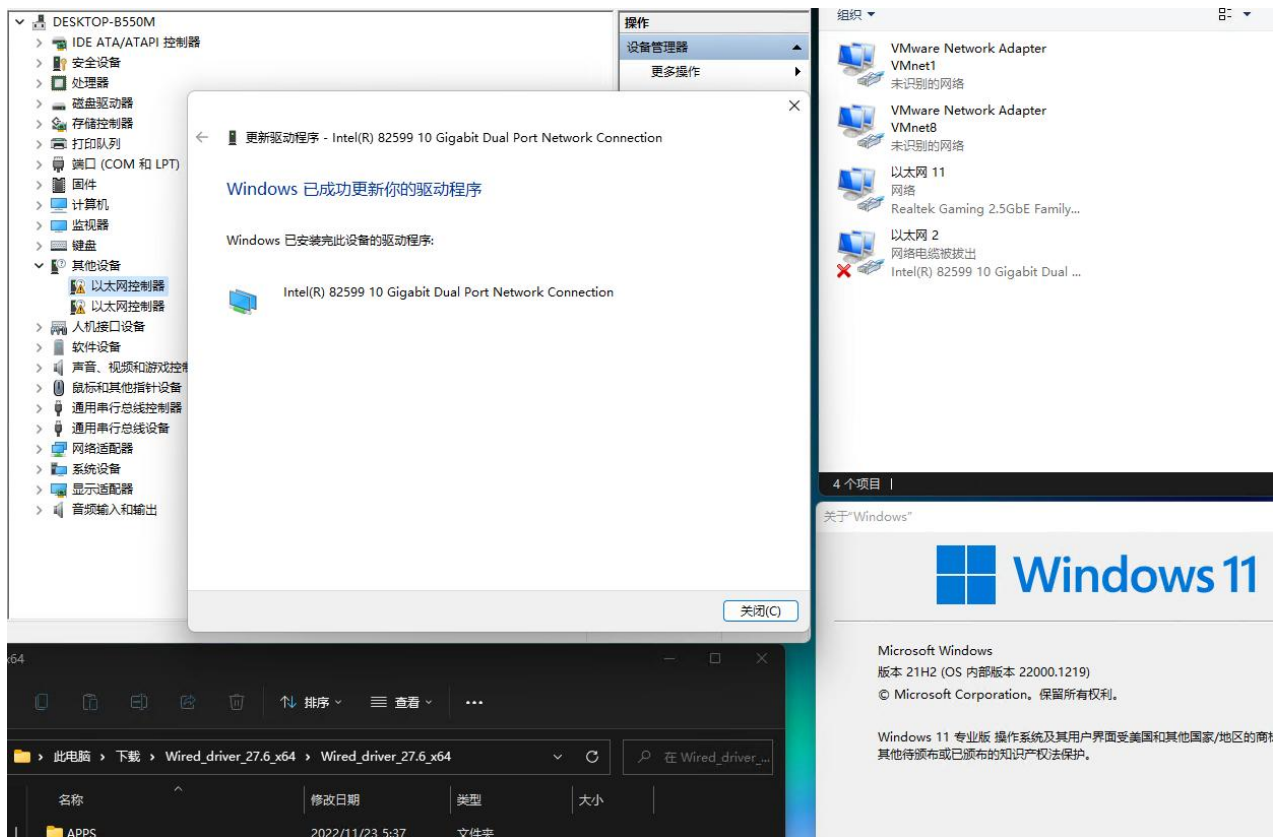
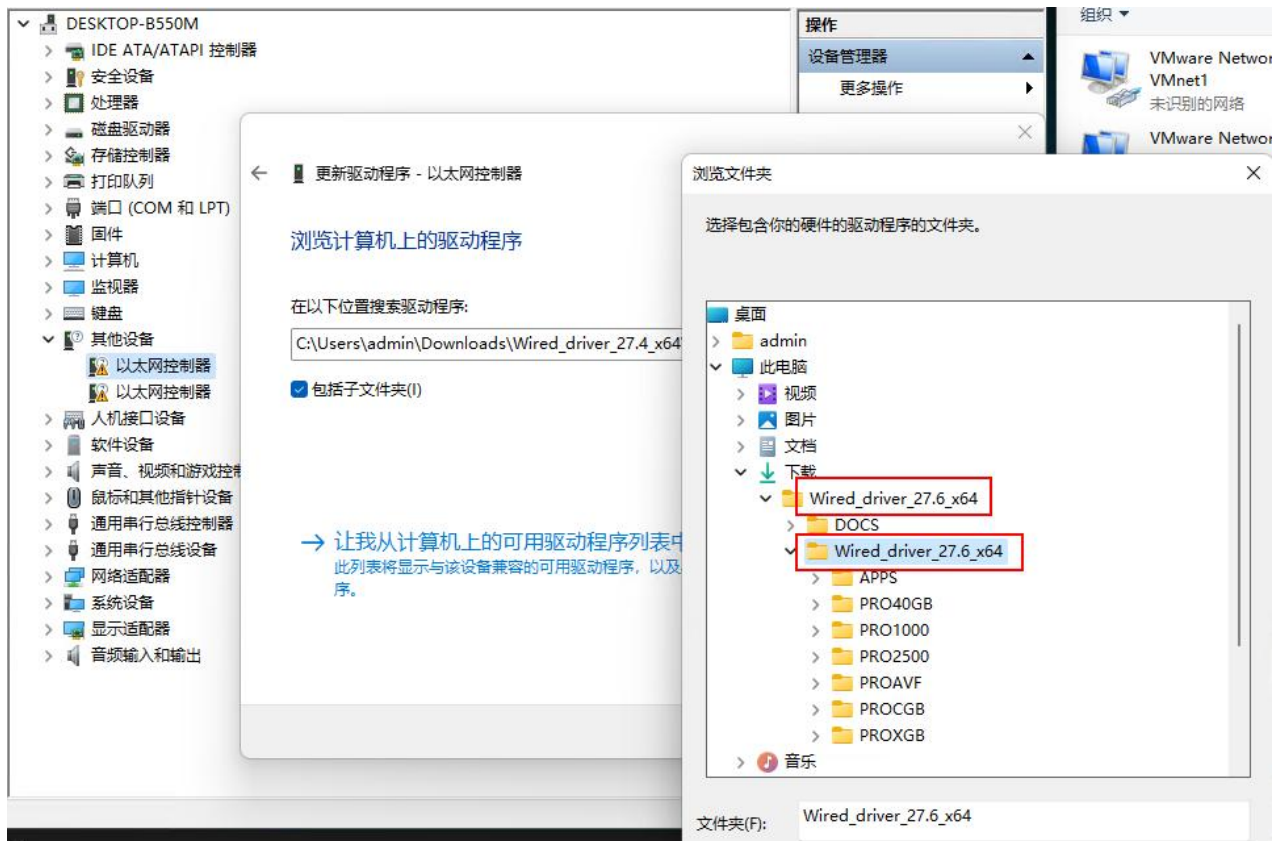
5、 In the Device Manager, select the Ethernet Controller, right-click on it, and select Update Driver.

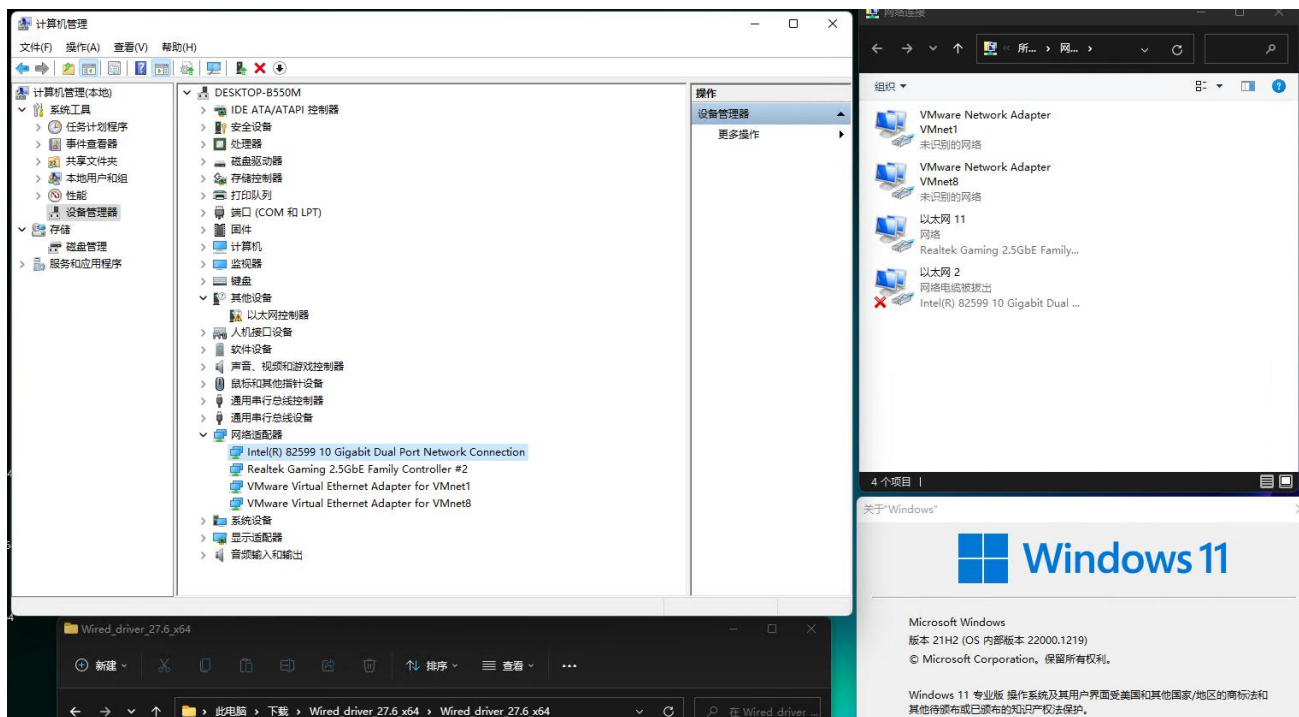


6、Select: Browse My Computer to Find Driver Software



7、Click Browse, select the folder where the downloaded and unzipped file was saved, and click Next to automatically install the driver.





8、In the Device Manager, right-click on the second Ethernet Controller, and repeat the steps 5, 6, and 7 to install the driver for the second port.

