



PetSnowy

Quick User Guide

Customer Service:
amazonsupport@petsnowy.com

Front

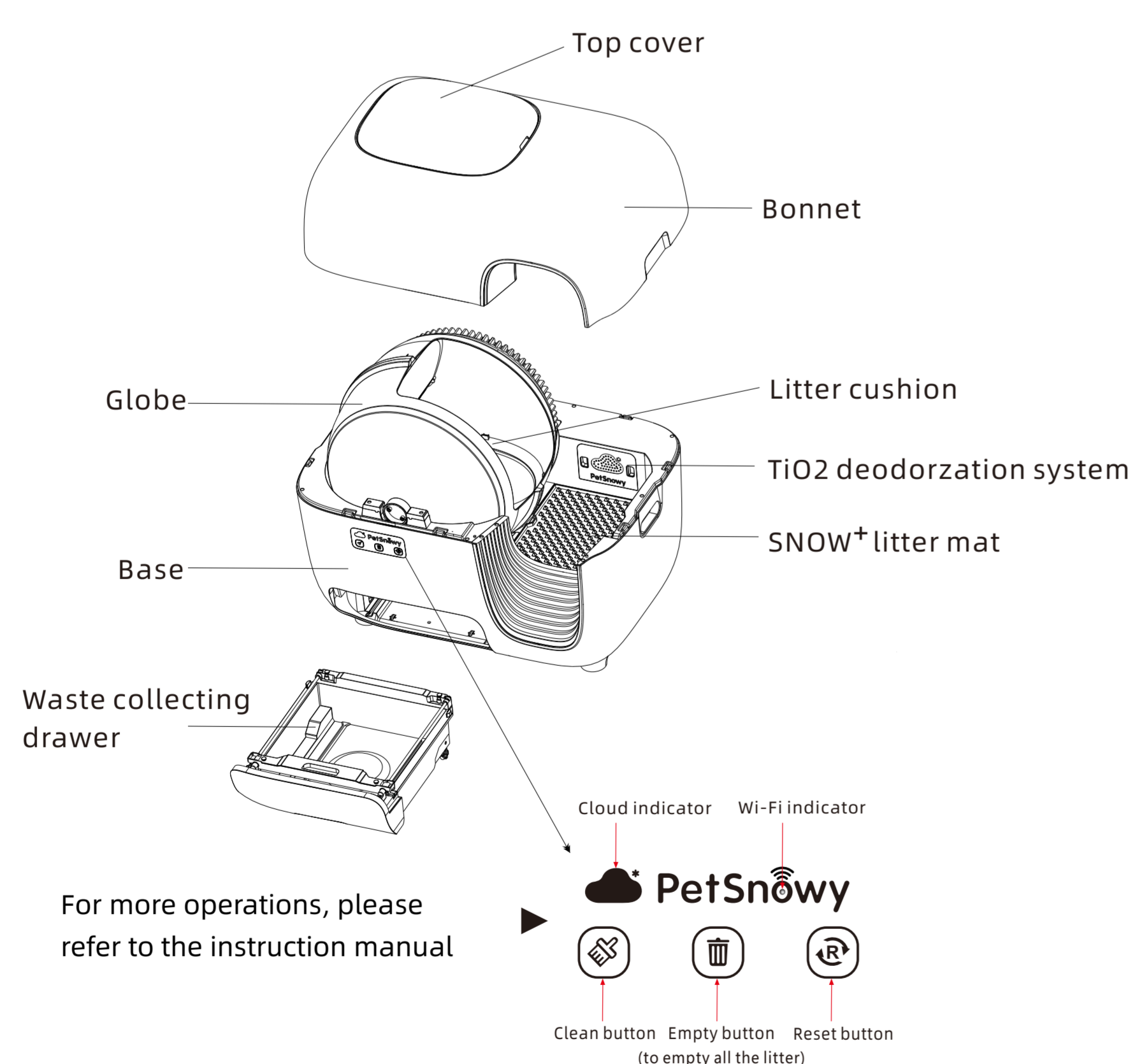
750 mm

500 mm



Quick User Guide For SNOW⁺Self-Cleaning Litter Box PS-001

Product Structure

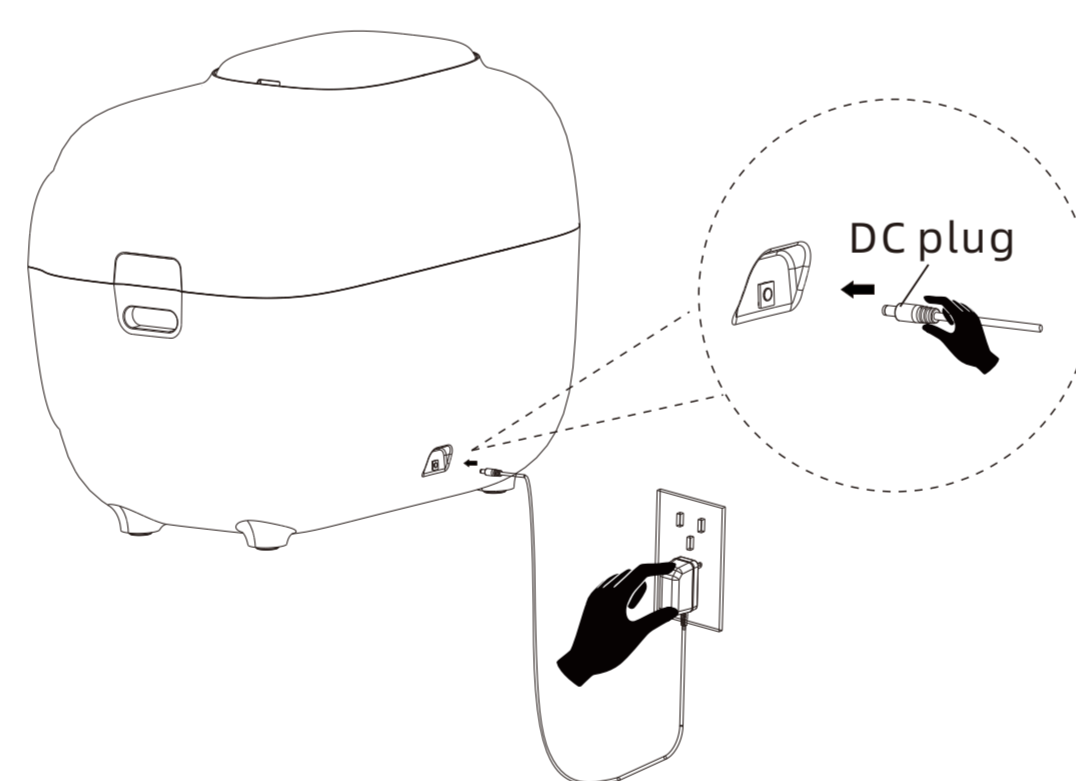


Setting Up the Product for First Use

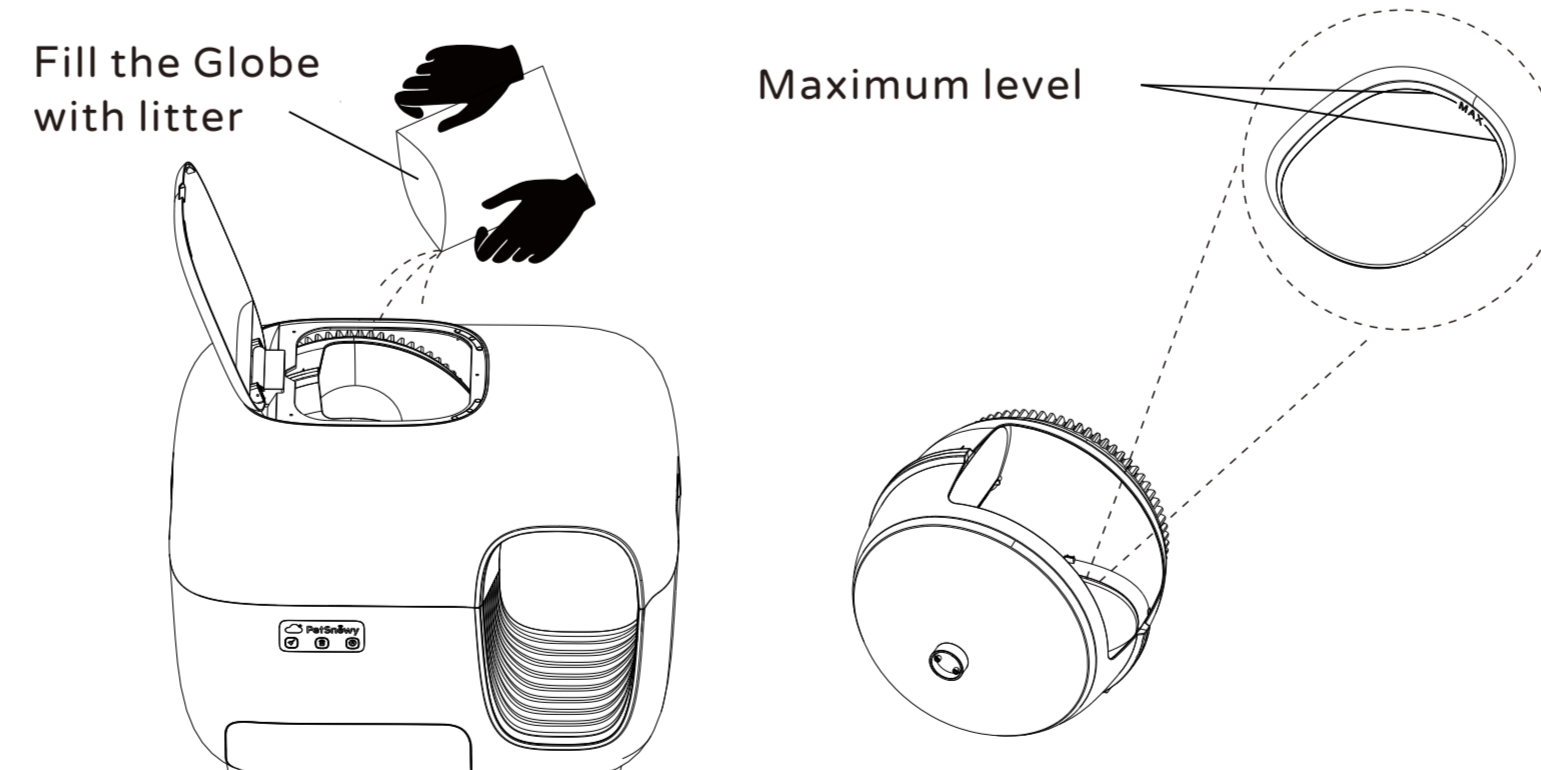
1. Open the package and take out the product carefully.
2. The product has a built-in gravity device. It must stand on a flat, hard floor, and be at least 2inch away from the wall.



3. Connect the power adapter's DC plug to the product's DC socket, then connect the power adapter to the power supply. The product will automatically perform a self-check for around 2 minutes. After the self-check is complete, place the soft cushion inside the product (see figure in Product Structure section).



4. Open the top cover and fill the globe with litter. Do not exceed the maximum level of 5.7 lbs(2.6 kgs), or the excess will fall into the waste collecting drawer. Press the to reset the weight each time litter is added or changed. Do not press when your cat is inside the litter box, or it may cause injury. The product is now ready for use; it will automatically clean itself after each time the cat uses the litter box.



5. If your cat has difficulty adjusting to the new litter box, please refer to the instruction manual, which includes tips to ensure a smooth transition.

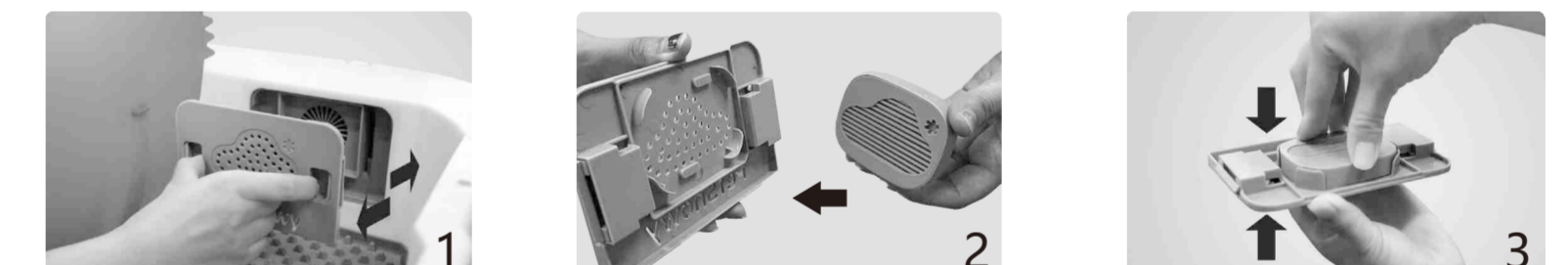
Connecting the APP

- Use your mobile phone to scan the QR code to download the app or download "PetSnowy" from the App Store.
- Connect to Wi-Fi hotspot and turn on your mobile phone's Bluetooth.
- Press and hold the Button on the new litter box for 5 seconds until the Wi-Fi indicator light flashes. Follow the app's prompts to connect the device.



Installing the Deodorizing Fragrance to the TiO2 Deodorization System *

Remove the fragrance box from the litter box, where it attaches to the TiO2 system. Place the deodorizing fragrance into the fragrance box, then reinstall.



Replacing the Trash Bag

- Take the waste collecting drawer out from the litter box, then place the PetSnowy trash bag into the waste collecting drawer.
- Hang the trash bag by its four holes onto the four pins of the drawer. Stretch the trash bag inside the drawer.
- Replace the trash bag regularly to ensure a fresh environment for your cat.



Reminder: This manual is only a quick user guide; please refer to the Product Instruction Manual for specific functions and more instructions.

* Deodorizing fragrance is only for the litter box with TiO2 Deodorization System.

Back