

MIXING CONSOLE

Professional 5-Channel Audio Mixer
with Effects Processor

Owner's Manual



RoHS
Made in China



1.Welcome

Thank you for purchasing the F-5A audio mixer.

Please read this manual carefully for proper use of your F-5A audio mixer, Should you need technical assistance please email our thechnical help at "all-after-sales@outlook.com".

2.Main Features

- **【3 Mic + 2 Stereo Line Inputs】** 3 XLR Lines input jack to connect mics or guitar, 1 pair 6.35mm and 1 pair 3.5mm RCA stereo inputs jack to connect CD plays/keyboard/computer.
- **【48V Phantom Power】** The mixer have only 1-3 channel XLR inputs with phantom power. you can feel free to switch 48V phantom power and ultra-low noise distortion enables the audio mixer to be used with condenser microphone.
- **【2-band EQ/gain controls/Reverb and Delay Effect】** Highly accurate LED Peak Level Indicator.easily adjust the high and low frequencies of each channel with the onboard 2-band EQ and gain controls.You can even add delay or reverb effects in your mix.
- **【Recording and Playing Music】** Connect external usb, flash Drive,PC,Phone and tablets for recording and playing,at the same time, it is also possible to record the same audio in progress to a USB flash drive for output.
- **【Bluetooth Connection】** This audio mixer enable to wirelessly stream music from Pad, Phone,Tablets,Computer and more bluetooth device to mix music.
- **【Headphone monitor 】** 3.5mm headphone jack, you can plug in headphones at any time to monitor the sound and volume;

3.Included Accessories



①Audio mixer*1



②USB to Type-C Cable*1



③USB Cable(59Inch) * 1



④AC power adaptor * 1

4.Panel introduction



1 [MIC/LINE] Mono Input jack (only available for XLR input channels 1-3)

Used to connect microphones, musical instruments, or audio equipment (CD players, etc.) to this device. These jacks support both XLR and phone plugs

2 [PAD] Switch (only available for XLR input channels 1-3)

Turning on this switch will attenuate the sound input to the device. If you hear distortion or the [PEAK] LED ⑦ indicator lights up, you can turn on the switch.

3 [HPF] switch (only available for XLR input channels 1-3)

Turning on this switch will enable the high-pass filter, attenuating frequencies below 80 Hz. When speaking into the microphone, you may need to turn on this switch to minimize unwanted vibrations and breath sounds picked up by the microphone.

4 [GAIN] knob

XLR input channels 1-3: Determines the basic volume of each channel from channel 1 to 3. Adjust these controllers to make the corresponding [PEAK] LED ⑦ flash briefly when singing and playing at the maximum volume.

Channels 4-5/Bluetooth/USB input: The gain knob of the channels 4-5/Bluetooth/USB module are shared, unlike the 1-3 channel which has independent volume control.

5 Equalizer (EQ) knob

XLR input channels 1-3: Use the [HIGH] (high band) and [LOW] (low band) knobs to adjust the sound quality. If you do not need to adjust the sound quality, you can set the knob to the "12 o'clock direction" position.

Channels 4-5/Bluetooth/USB input: The EQ knob of the channels 4-5/Bluetooth/USB module are shared, unlike the 1-3 channel which has independent EQ knob control.

6 [EFF] Effect switch (only available for XLR input channels 1-3)

The EFF control adjusts the effect volume of the only for channels 1-3. Channels 4-5 /Bluetooth/USB modules have no reverberation effect.

7 [PEAK] LED

It will light up when the volume of the input signal or the volume after the equalizer is too high (when it reaches 3dB below the clipping distortion). If it lights up frequently, turn the [GAIN] knob ④ to the left to decrease the volume.

8 [LEVEL] knob

Used to adjust the volume balance between each channel. Usually this switch is set to the "3 o'clock direction" position.

9 [ST/ USB] switch

This switch key is to switch between channels 3~4 or Bluetooth, USB module. When you use channels 3~4 and computer input, remember to note that this key is not pressed. When you use a Bluetooth and USB module, this button is pressed.

NOTE: Bluetooth and USB functions are only available as one of the two options and cannot be used simultaneously.

10 RCA L/R Line Output jack 1 Pair

Used for output connections, devices that support RCA jacks.

11 RCA L/R Line Input jack 1 Pair

For input connections, devices that support line jacks. For example, CD player, mobile, computer, electronic organ etc.

12 6.35mm L/R Line Input jacks 1 Pair

It is used for input connection and supports 6.35mm-line jack devices. For example, CD player, mobile, computer, electronic organ etc.

13 6.35mm L/R Line Output jacks 1 Pair

It is used for output connection and supports 6.35 line socket equipment. For example, active speaker, power amplifier etc.

14 L/R XLR Female Output jacks 1 Pair

It is used for output connection and supports 6.35 line socket equipment. For example, power amplifier, active speaker etc.

15 [PAD +48V] Switch/LED (only available for 1-3 XLR input Channel)

When the switch is turned on, the LED lights up to indicate that the device has applied DC+48V phantom power to the XLR plug on the [MIC/LINE] mono input port ①. When using a condenser microphone powered by phantom power, turn on this switch.

NOTE: If you do not need phantom power supply, be sure to set this switch to off. When operating this switch, please observe the following important precautions in order to prevent noise and damage to the unit and external equipment.

- When the microphone or other equipment connected on channels 1~3 does not support the phantom power supply function, make sure that the switch is kept off.

- When the switch is on, do not connect/disconnect the cables on channels 1~3.

- Before operating this switch, set the [LEVEL] knobs of channels 1~3 to minimum.

16 USB input

Used for USB port device input. Such PC, USB Stick, MP3 devices etc, it can be used for music playback and recording to USB stick output.

17 Display:

Used to display USB mode or Bluetooth mode.

18 MP3 player controller

The first right button: playback pause, the second right button: next song, the left button: switch the sound source mode, the right button: previous song.

19 [DELAY] Delay effect knob (only available for XLR input Channels 1~3)

Adjust the intensity of the delay effect processing for the input signal.

20 Level meter

The L and R level meters will be displayed in 5 levels: "+10" "+6"" "+0" "-3" and "-10" dB respectively.

- 21

[REPEAT] Reverb effect knob

reverberation effect processing for the input signal. (This feature is only available for XLR input Channels 1~3)
- 22

[PHONES] output jack

Used to connect headphones.
- 23

[PHONES] knob

You can adjust the volume of the sound output from the [PHONES] jack.
- 24

[MAIN] knob

The main signal output control knob.
- 25

[DC5V 1A] Type-C power socket

Used to connect the included power cord.
- 26

[PC/REC] indicator

When a computer device is connected, the indicator light will light up.
- 27

PC output port

The sound of the stereo bus will be output to the computer. Such as record to computer for output or audio input to mixer by computer
- 28

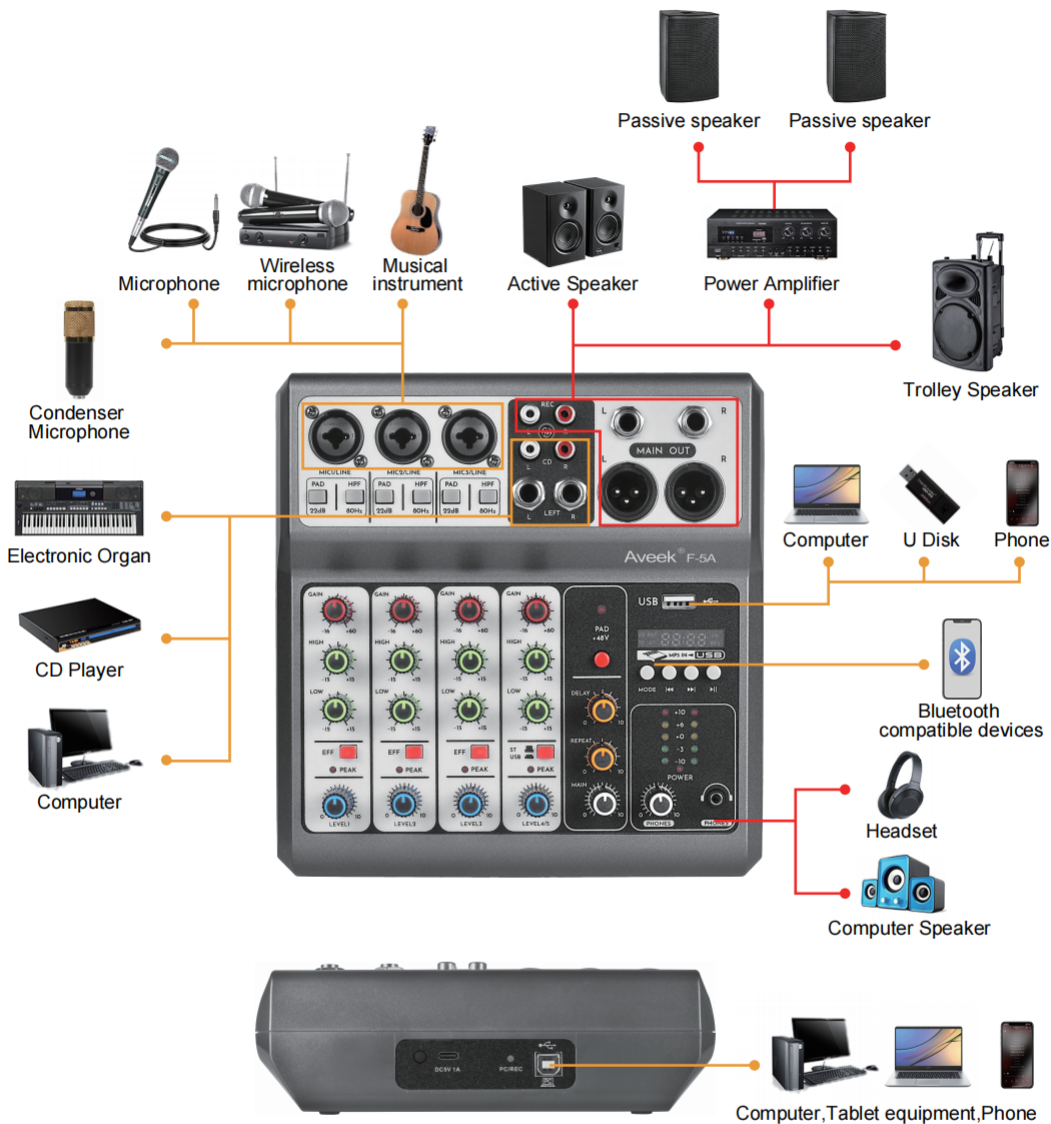
Power switch

This key is the switch that controls the mixer.

5.General Specifications

MIC LINE XLR	Electronic balance, discrete input configuration	
	Frequency response	10 Hz ~ 200 kHz
	Gain range	+14 dB ~ +60 dB
	SNR	120 dB E.I.N.
RCA INPUT	Electronic balance	
	Frequency response	10 Hz ~ 130 kHz
	Gain range	-6 dB ~ +38 dB
	SNR	95 dB E.I.N.
6.35mm Input	Frequency response	10 Hz ~ 70 kHz
	Gain range	line: -8~+15 dB/microphone: +13~+60 dB
	SNR	line: 90 dB/microphone: 104 dB E.I.N.
Equalization	LOW	50 Hz, + / - 15dB
	HIGH	10 kHz, + / - 15dB
OUTPUT	Main mix	+28 dBu balance/ + 22 dBu unbalanced
	Main output	+22 dBu unbalanced
	AUX sending	+22 dBu unbalanced
	EFF sending	+22 dBu unbalanced
	Tape output	+15 dBu / 150
physical	America/Canada	120 V~, 60 Hz,
	UK/Australia	240 V~, 50 Hz,
	Europe	230 V~, 50 Hz,
	Japan	100 V~, 50-60 Hz,
	China	200 V~, 50-60 Hz,

6. Compatible Devices and Connection Methods



INPUT&OUTPUT

MIC XLR INPUT	XLR input jacks x 3	REC OUT	RCA L/R Line output x 1 pair
6.35MM INPUT	6.35mm L/R Line input jacks x 1 pair	XLR FEMALE OUT	L/R XLR female output x 1 pair
RCA INPUT	RCA L/R Line input jacks x 1 pair	MAIN OUT	6.35mm L/R output x 1 pair
USB/Bluetooth INPUT	USB input & record x 1 ,bluetooth wireless input	MONITOR OUT	3.5mm monitor output jack x 1

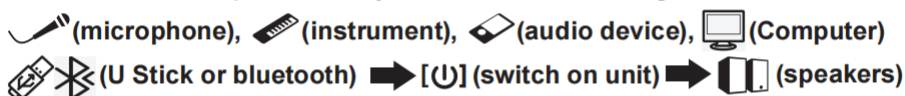
7. How to Use the Audio Mixer?

STEP1:

- 1.1: Connect the type-c power cable to mixer, then connect the Supplied AC adapter.
- 1.2: Adjust all level control knobs to zero. Includes [Gain] knob (red), [Level] knob (blue) and [Main] knob (white); Then set the equalizer knob (green) to the center "12 o'clock"
- 1.3: Turn on the power switch button.
- 1.4: Connect the output device (active speakers or power amplifier + passive speakers) to the output device jack of the mixer.



- 1.5: Connect the input devices you need in the following order:



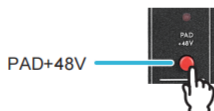
NOTICE Follow this order to avoid any loud, unexpected noise from the speakers. Reverse the order when turning the power off.

STEP2:

- 2.1: If you connect a device with high output level, such as a CD player or an electric keyboard to connect the channels 1-3, Press (■) the [PAD] switch of the corresponding channel



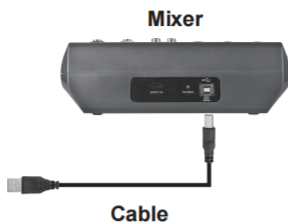
NOTE If you are using condenser microphones, turn on (■) the [PAD+48V] switch.



- 2.2: Set the [LEVEL] knob as required to adjust the volume balance between the corresponding channels.

NOTICE There are three functions to adjust the volume: [PAD], [GAIN] and [LEVEL]. Once the [PAD] switch and [GAIN] knob have been set, do not adjust these controls as much as possible. Generally, the volume is adjusted with the [LEVEL] knob.

8. Operating Steps for Computer Recording



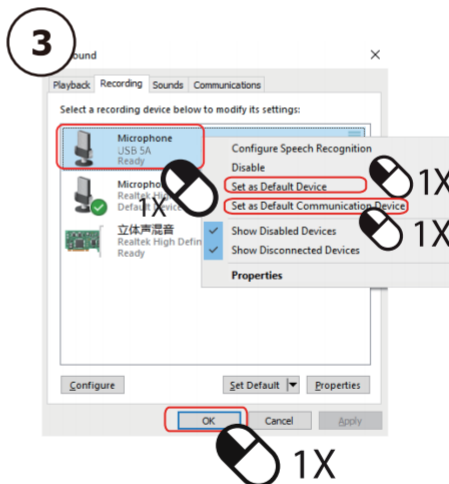
NOTE: When using recording with a PC, Pls check that the button is not pressed.

STEP 1: First, connect the PC or laptop to the mixer using a cable to power it on and then directly open the recording software to record (no need to install a driver).

STEP 2: Before connecting to the PC or laptop to record, you need to set the computer as follows:

Windows system settings

1. Open the Start menu, and then click Control Panel.
2. Open the sound preferences from the control panel folder.
3. Click "Record" and set the microphone to the default value to start recording.



Apple system settings

1. Open the "System Preferences" application.
2. Find "Sound" and click to open it.
3. Click to open the "Output" interface to select the microphone and start recording.

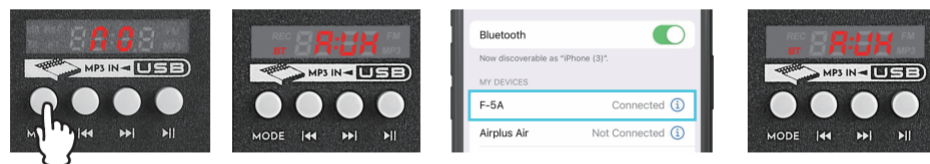


9. How to record via USB jack



1. Plug in usb stick, flash drive.
2. Press MODE button until " USB REC" shown on the LCD and you will hear the voice prompt " Recording Mode" , at this time, start recording automatically to USB.
3. Press the ►► button to start or pause recording.
4. Press the MODE button to finish recording and save the file in the MP3 format&Play recording file.

10. Operating Steps for Bluetooth Playback



1. Press MODE button until "BT" shown on the LCD and you will hear the voice prompt " The bluetooth device is ready to pair" ,If Bluetooth is not connected, the word "BT" will keep flashing
2. Open Bluetooth mode on the phone, click "F-5A" to connect successfully, and you will hear the voice prompt "Bluetooth connect successful, and then play music.
3. Press the ►► button to start or pause music, Press the ◀◀ and ►► switch songs.



NOTE: When using Bluetooth and USB functions, Pls press this key ()

11. Operating Steps for USB Play Music



1. Plug in usb stick, flash drive, MP3
2. Press MODE button until "MP3" shown on the LCD and you will hear the voice prompt "Music Play Mode". Then music automatically plays
3. Press the ►► button to start or pause music, Press the ◀◀ and ►► switch songs.



NOTE: When using Bluetooth and USB functions, Pls press this key ()

NOTE: Bluetooth and USB functions are only available as one of the two options and cannot be used simultaneously.

12. PRECAUTIONS

PLEASE READ CAREFULLY BEFORE PROCEEDING

Please keep this manual in a safe place for future reference.

WARNING

Always follow the basic precautions listed below to avoid the possibility of serious injury or even death from electrical shock, short-circuiting, damages, fire or other hazards. These precautions include, but are not limited to, the following:

Power supply/AC power adaptor

- Do not place the power cord near heat sources such as heaters or radiators, and do not excessively bend or otherwise damage the cord, place heavy objects on it, or place it in a position where anyone could walk on, trip over, or roll anything over it.
- Only use the voltage specified as correct for the device. The required voltage is printed on the name plate of the device.
- Use the specified adaptor (MU18 or PA-130, or an equivalent recommended by AVEEK) only. Using the wrong adaptor can result in damage to the instrument or overheating.
- Check the electric plug periodically and remove any dirt or dust which may have accumulated on it.

Water warning

- Do not expose the device to rain, use it near water or in damp or wet conditions, or place on it any containers (such as vases, bottles or glasses) containing liquids which might spill into any openings. If any liquid such as water seeps into the device, turn off the power immediately and unplug the power cord from the AC outlet. Then have the device inspected by qualified AVEEK service personnel.
- Never insert or remove an electric plug with wet hands.

Fire warning

- Do not put burning items, such as candles, on the unit. A burning item may fall over and cause a fire.



CAUTION

Always follow the basic precautions listed below to avoid the possibility of physical injury to you or others, or damage to the device or other property. These precautions include, but are not limited to, the following:

Power supply/AC power adaptor

- Do not cover or wrap the AC power adaptor with a cloth or blanket.
- Remove the electric plug from the outlet when the device is not to be used for extended periods of time, or during electrical storms.
- When removing the electric plug from the device or an outlet, always hold the plug itself and not the cord. Pulling by the cord can damage it.

Location

- Do not place the device in an unstable position where it might accidentally fall over.
- Do not place the device in a location where it may come into contact with corrosive gases or salt air. Doing so may result in malfunction.
- Before moving the device, remove all connected cables.
- When setting up the device, make sure that the AC outlet you are using is easily accessible. If some trouble or malfunction occurs, immediately turn the power off and disconnect the plug from the outlet. Even when the power is turned off, electricity is still flowing to the product at the minimum level.
- When you are not using the product for a long time, make sure to unplug the power cord from the wall AC outlet.

Connections

- Remove the power plug from the AC outlet when cleaning the device.

Maintenance

- Before connecting the device to other devices, turn off the power for all devices. Before turning the power on or off for all devices, set all volume levels to minimum.

AVEEK cannot be held responsible for damage caused by improper use or modifications to the device, or data that is lost or destroyed.

Handling caution

- Avoid inserting or dropping foreign objects (paper, plastic, metal, etc.) into any gaps or openings on the device. If this happens, turn off the power immediately and unplug the power cord from the AC outlet. Then have the device inspected by qualified Yamaha service personnel.
- Do not rest your weight on the device or place heavy objects on it, and avoid use excessive force on the buttons, switches or connectors.
- Do not use speakers or headphones for a long period of time at a high or uncomfortable volume level, since this can cause permanent hearing loss. If you experience any hearing loss or ringing in the ears, consult a physician.