

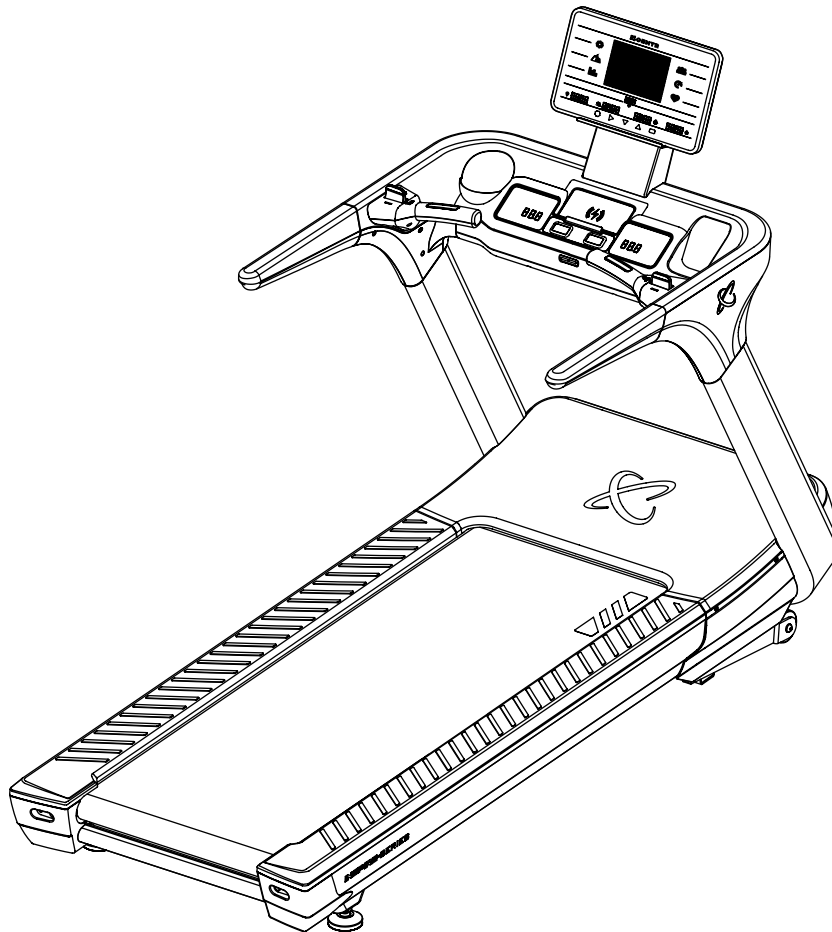


Models: T7B-110.1  
T7B-220.1

## SERVICE MANUAL

# CENTR INSPIRE SERIES T7 & T7S

IMPORTANT, RETAIN FOR FUTURE REFERENCE: READ CAREFULLY



Manual to be used for Unit Serial Number Range:

Starting S/N: T7B-110.1-9-24-09-000001

Starting S/N: T7B-220.1-9-24-10-000001

MADE IN CHINA  
80399-EN-V2025-03-03



## TABLE OF CONTENTS

IMPORTANT SAFETY INSTRUCTIONS.....	4
PARTS DIAGRAMS.....	5-6
PARTS LIST.....	7
ELECTRICAL WIRING DIAGRAM (110V MACHINES).....	8
ELECTRICAL PARTS LIST (110V MACHINES).....	9
ELECTRICAL WIRING DIAGRAM (220V MACHINES).....	10
ELECTRICAL PARTS LIST (220V MACHINES).....	11

## IMPORTANT SAFETY INSTRUCTIONS

### DANGER

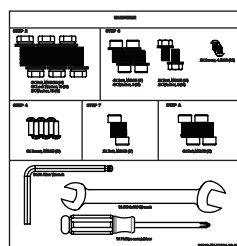


To reduce the risk of electrical shock, disconnect the power cord from the outlet and machine and wait 5 minutes before servicing this product. Any diagnosis or repairs of this product should be done by a trained service technician or an individual who is aware of proper safety procedures. If proper safety procedures are not followed, an electric shock is possible. Store the power cord in a secure location.

### WARNING!

To reduce the risk of burns, fire, electric shock, or injury to persons:

1. Read and understand the Important Safety Instructions before working on the machine. Failure to obey the instructions and safety warnings could cause injury to the service technician or bystanders.
2. Keep bystanders, children and pets away from the product being serviced at all times.
3. Make sure that the repair is done in an appropriate work space away from foot traffic and exposure to bystanders.
4. Be aware that as hardware is removed from parts on this machine, the loose parts may need to be supported or damage to you or the machine may occur. Be sure to be prepared to support the weight of the part before fully removing any hardware when servicing the machine. If necessary, use a second person to assist with supporting the part.
5. Some components of the equipment can be heavy or awkward. Enlist the service of a second person when you do maintenance steps involving these components. Do not try to do heavy or awkward steps on your own.
6. If replacement parts are necessary, use only genuine Centr replacement parts and hardware. Failure to use genuine replacement parts can cause a risk to users, keep the machine from operating correctly and will void the warranty.
7. Be sure that all warning stickers and instructional placards applied to the product are present and in good condition when doing maintenance or replacing components. If at any time the Warning labels become loose, unreadable or dislodged, replace the labels.
8. Do not try to change the design or functionality of the machine being serviced as this can adversely effect user safety and will void the warranty.
9. Do not use the machine until all shrouds, instructions, warning labels and correct functionality have been verified and tested for correct performance.



80319

105300

105301

105252

105258

105266

105267

105253

105254

105255

105226

105225

105224

105298

105240

104993

105230

105257

105228

105229

105231

105232

105245

105244

105247

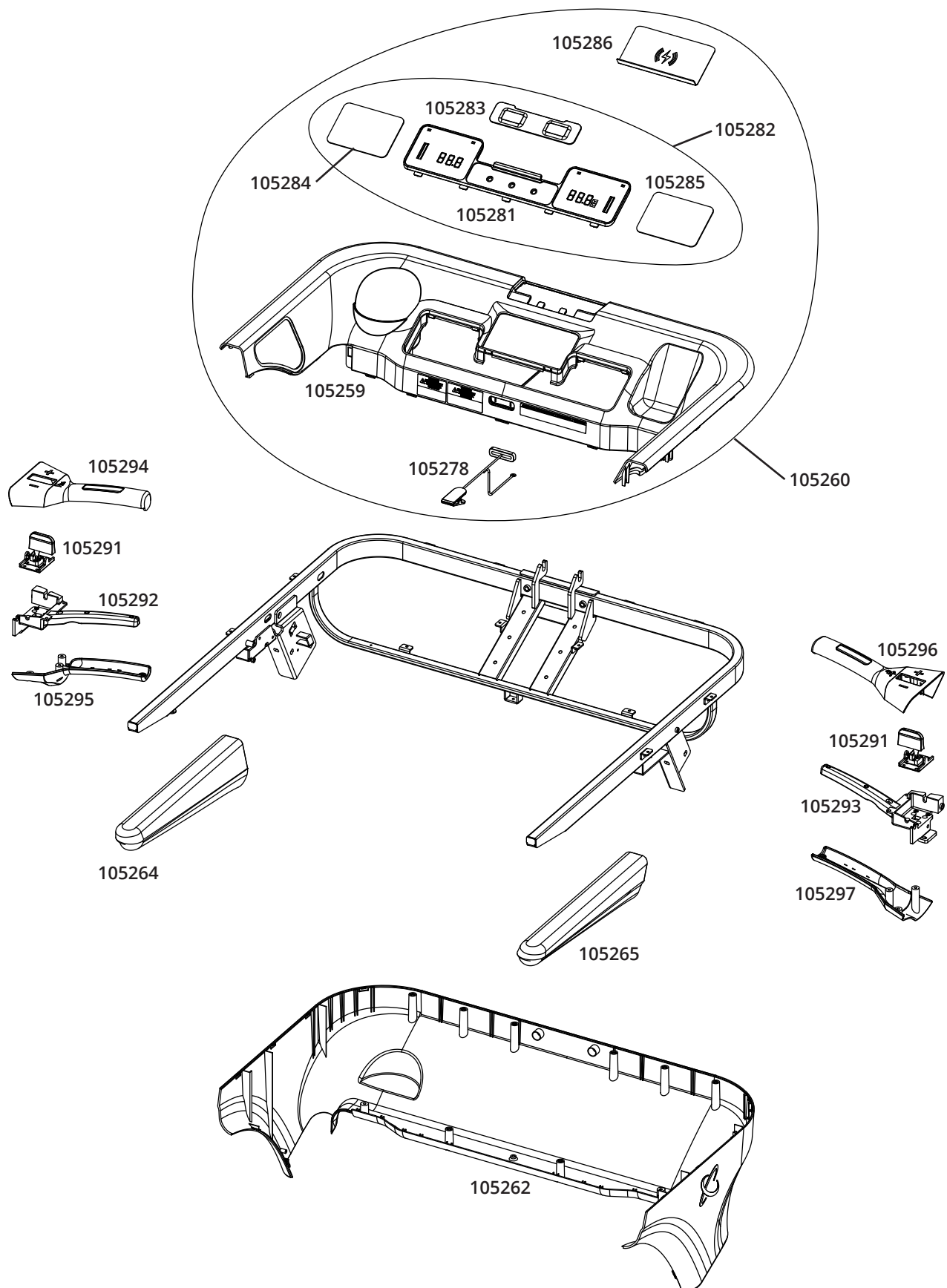
105243

105246

105241

105299

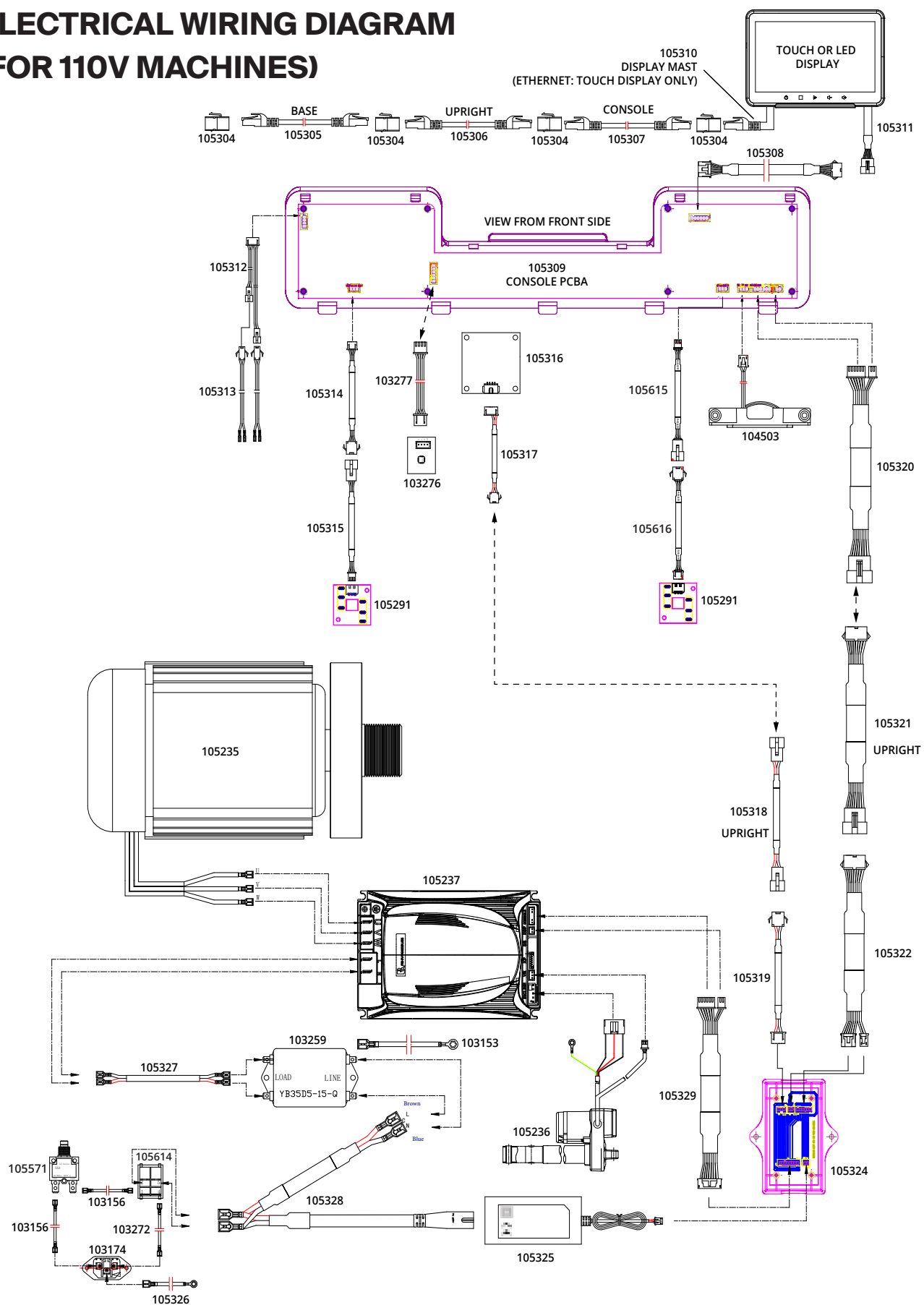
103304



# CENTR

PART NUMBER	DESCRIPTION	QTY.
80319	HARDWARE CARD, CENTR T7	1
103206	WASHER, RAIL MOUNT	8
103304	ASSY, TM LUBRICATION, 30mL BOTTLE & NOZZLE	1
104993	BELT, MICRO-V, 220J8	1
105224	ASSY, BASE FRAME	1
105225	WHEEL, FRONT TRANSPORT	2
105226	BUMPER, BASE FRAME	2
105228	BELT, RUNNING	1
105229	ASSY, RUNNING DECK	1
105230	ROLLER, FRONT, 60 DIA	1
105231	ROLLER, REAR, 60 DIA	1
105232	BUMPER, RUNNING DECK	6
105240	ASSY, SIDE PLATFORM, LH	1
105241	ASSY, SIDE PLATFORM, RH	1
105243	COVER, REAR, RH	1
105244	COVER, CENTER BELT GUARD	1
105245	COVER, REAR, LH	1
105246	COVER, REAR FLOOR LEVELER	2
105247	FLOOR LEVELER	2
105252	ASSY, UPRIGHT FRAME	1
105253	COVER, MOTOR	1
105254	COVER, FRONT SIDE, LH	1
105255	COVER, FRONT SIDE, RH	1
105257	COVER, FRONT POWER PANEL	1
105258	ASSY, CONSOLE BASE AND HANDRAILS	1
105259	COVER, CENTER CONSOLE, TOP	1
105260	ASSY, CENTER CONSOLE TOP COVER	1
105262	ASSY, CENTER CONSOLE BOTTOM COVER	1
105264	HANDRAIL GRIP, LH	1
105265	HANDRAIL GRIP, RH	1
105266	COVER, UPRIGHT INSIDE, LH	1
105267	COVER, UPRIGHT INSIDE, RH	1
105278	ASSY, REMOVABLE SAFETY KEY, SCREW TETHER	1
105281	CENTER CONSOLE, BACK PLATE	1
105282	ASSY, CENTER CONSOLE	1
105283	BUTTONS, START AND STOP	1
105284	CONSOLE LEFT PANEL, INCLINE	1
105285	CONSOLE RIGHT PANEL, SPEED	1
105286	WIRELESS CHARGING PAD	1
105291	ASSY, HAND GRIP ADJUSTMENT LEVER	2
105292	HANDGRIP, METAL, LH	1
105293	HANDGRIP, METAL, RH	1
105294	COVER, INCLINE ADJ, TOP, LH	1
105295	COVER, INCLINE ADJ, BTM, LH	1
105296	COVER, SPEED ADJ, TOP, RH	1
105297	COVER, SPEED ADJ, BTM, RH	1
105298	COVER, SIDERAIL, LH	1
105299	COVER, SIDERAIL, RH	1
105300	ASSY, CONSOLE MAST	1
105301	COVER, CONSOLE MAST, REAR	1

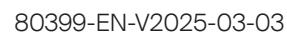
# ELECTRICAL WIRING DIAGRAM (FOR 110V MACHINES)





## ELECTRICAL PARTS LIST (FOR 110V MACHINES)

PART NUMBER	DESCRIPTION	QTY.
103153	WIRE, GROUND, GREEN-YELLOW, 16AWG, 600mm	1
103156	WIRE, BROWN, 14AWG, 100mm	2
103174	RECEPTACLE, POWER, C14, 16A	1
103216	CORD, POWER, TYPE B	1
103259	FILTER, YB35D5-15A-Q	1
103272	WIRE, BLUE, 14AWG, 150mm	1
103276	PCBA, BT	1
103277	CABLE, BT, 200mm	1
104503	ASSY, REMOVABLE SAFETY KEY, FEMALE	1
105235	MOTOR, RUNNING BELT, 2.5HP	1
105236	MOTOR, INCLINE LIFT, 1/10HP, 110V	1
105237	ASSY, AC MOTOR DRIVE INVERTOR, 110V	1
105291	ASSY, HAND GRIP ADJUSTMENT LEVER	2
105304	COUPLER, ETHERNET, FEMALE TO FEMALE	4
105305	CABLE, ETHERNET, 700mm	1
105306	CABLE, ETHERNET, 1200mm	1
105307	CABLE, ETHERNET, 350mm	1
105308	CABLE, CONSOLE PCBA TO MAST, 500mm	1
105309	PCBA, T7B CONSOLE	1
105310	CABLE, ETHERNET, 450mm	1
105311	CABLE, CONSOLE PCBA TO MAST, 250mm	1
105312	CABLE, CONSOLE PCBA TO HR GRIPS, BRANCHED 400mm 750mm	1
105313	CABLE, CONSOLE PCBA TO HR GRIPS, 400mm	2
105314	CABLE, INCLINE LEFT ADJ SWITCH, 200mm	1
105315	CABLE, INCLINE LEFT ADJ SWITCH, 400mm	1
105316	PCBA, WIRELESS CHARGING PAD	1
105317	CABLE, WIRELESS CHARGING PAD, 550mm	1
105318	CABLE, WIRELESS CHARGING PAD, 1200mm	1
105319	CABLE, WIRELESS CHARGING PAD, 700mm	1
105320	CABLE, CONSOLE PCBA, COMM & POWER, 500mm	1
105321	CABLE, CONSOLE PCBA, COMM & POWER, 1200mm	1
105322	CABLE, CONSOLE PCBA, COMM & POWER, 700mm	1
105324	PCBA, COMM & POWER REDISTRIBUTION	1
105325	POWER CONVERTOR, AC TO DC	1
105326	WIRE, GROUND, GREEN-YELLOW, 16AWG, 150mm	1
105327	CABLE, BLUE-BROWN, BRANCHED 450mm	1
105328	CABLE, SWITCH TO ADAPTER & FITLER, BRANCHED 300mm 600mm	1
105329	CABLE, POWER REDISTRIBUTION TO INVERTOR, 800mm	1
105571	FUSE, OVERLOAD PROTECTOR, 15A	1
105614	SWITCH, POWER ON/OFF, 20A	1
105615	CABLE, SPEED RIGHT ADJ SWITCH, 200mm	1
105616	CABLE, SPEED RIGHT ADJ SWITCH, 400mm	1



## ELECTRICAL PARTS LIST (FOR 220V MACHINES)

PART NUMBER	DESCRIPTION	QTY.
103153	WIRE, GROUND, GREEN-YELLOW, 16AWG, 600mm	1
103156	WIRE, BROWN, 14AWG, 100mm	2
103172	SWITCH, POWER ON/OFF, 16A	1
103173	FUSE, OVERLOAD PROTECTOR, 12A	1
103174	RECEPTACLE, POWER, C14, 16A	1
103259	FILTER, YB35D5-15A-Q	1
103272	WIRE, BLUE, 14AWG, 150mm	1
103276	PCBA, BT	1
103277	CABLE, BT, 200mm	1
104503	ASSY, REMOVABLE SAFETY KEY, FEMALE	1
103565	CORD, POWER, TYPE E	1
103566	CORD, POWER, TYPE I	1
103567	CORD, POWER, TYPE K	1
103568	CORD, POWER, TYPE G	1
103569	CORD, POWER, TYPE J	1
104671	INDUCTOR, 2.2kW, PFC-10A-4.0	1
105235	MOTOR, RUNNING BELT, 2.5HP	1
105291	ASSY, HAND GRIP ADJUSTMENT LEVER	2
105304	COUPLER, ETHERNET, FEMALE TO FEMALE	4
105305	CABLE, ETHERNET, 700mm	1
105306	CABLE, ETHERNET, 1200mm	1
105307	CABLE, ETHERNET, 350mm	1
105308	CABLE, CONSOLE PCBA TO MAST, 500mm	1
105309	PCBA, T7B CONSOLE	1
105310	CABLE, ETHERNET, 450mm	1
105311	CABLE, CONSOLE PCBA TO MAST, 250mm	1
105312	CABLE, CONSOLE PCBA TO HR GRIPS, BRANCHED 400mm 750mm	1
105313	CABLE, CONSOLE PCBA TO HR GRIPS, 400mm	2
105314	CABLE, INCLINE LEFT ADJ SWITCH, 200mm	1
105315	CABLE, INCLINE LEFT ADJ SWITCH, 400mm	1
105316	PCBA, WIRELESS CHARGING PAD	1
105317	CABLE, WIRELESS CHARGING PAD, 550mm	1
105318	CABLE, WIRELESS CHARGING PAD, 1200mm	1
105319	CABLE, WIRELESS CHARGING PAD, 700mm	1
105320	CABLE, CONSOLE PCBA, COMM & POWER, 500mm	1
105321	CABLE, CONSOLE PCBA, COMM & POWER, 1200mm	1
105322	CABLE, CONSOLE PCBA, COMM & POWER, 700mm	1
105324	PCBA, COMM & POWER REDISTRIBUTION	1
105325	POWER CONVERTOR, AC TO DC	1
105326	WIRE, GROUND, GREEN-YELLOW, 16AWG, 150mm	1
105327	CABLE, BLUE-BROWN, BRANCHED 450mm	1
105328	CABLE, SWITCH TO ADAPTER & FITLER, BRANCHED 300mm 600mm	1
105329	CABLE, POWER REDISTRIBUTION TO INVERTOR, 800mm	1
105336	MOTOR, INCLINE LIFT, 1/10HP, 220V	1
105337	ASSY, AC MOTOR DRIVE INVERTOR, 220V	1
105339	WIRE, BLUE, 14AWG, 600mm	1
105615	CABLE, SPEED RIGHT ADJ SWITCH, 200mm	1
105616	CABLE, SPEED RIGHT ADJ SWITCH, 400mm	1

**CENTR**