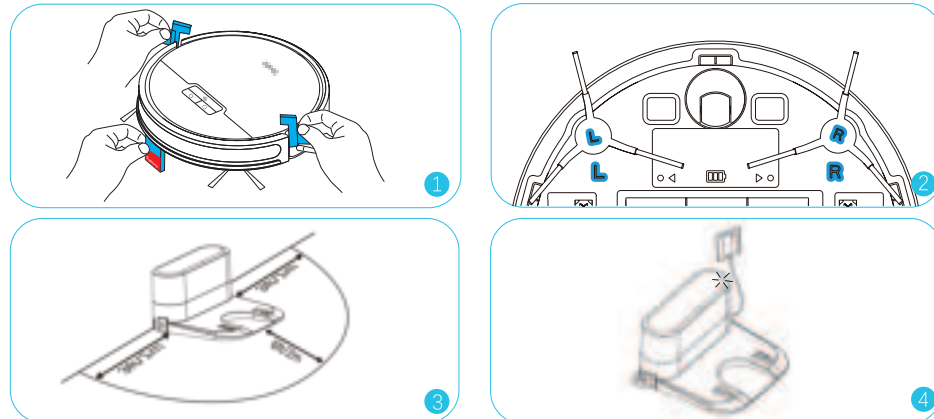


Quick Start Guide

Notes:

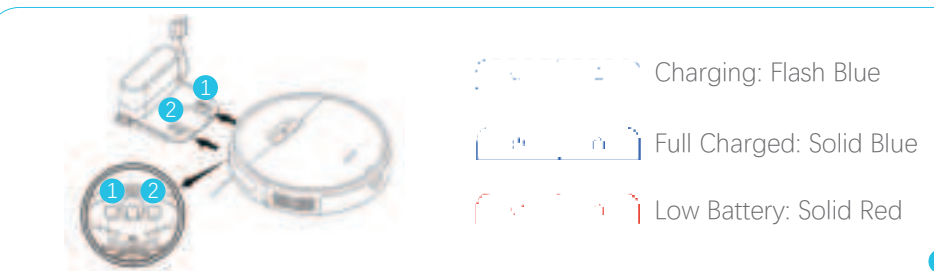
Please search for "Tikom Technology" on YouTube to find installation videos.

Getting Started



Notes:

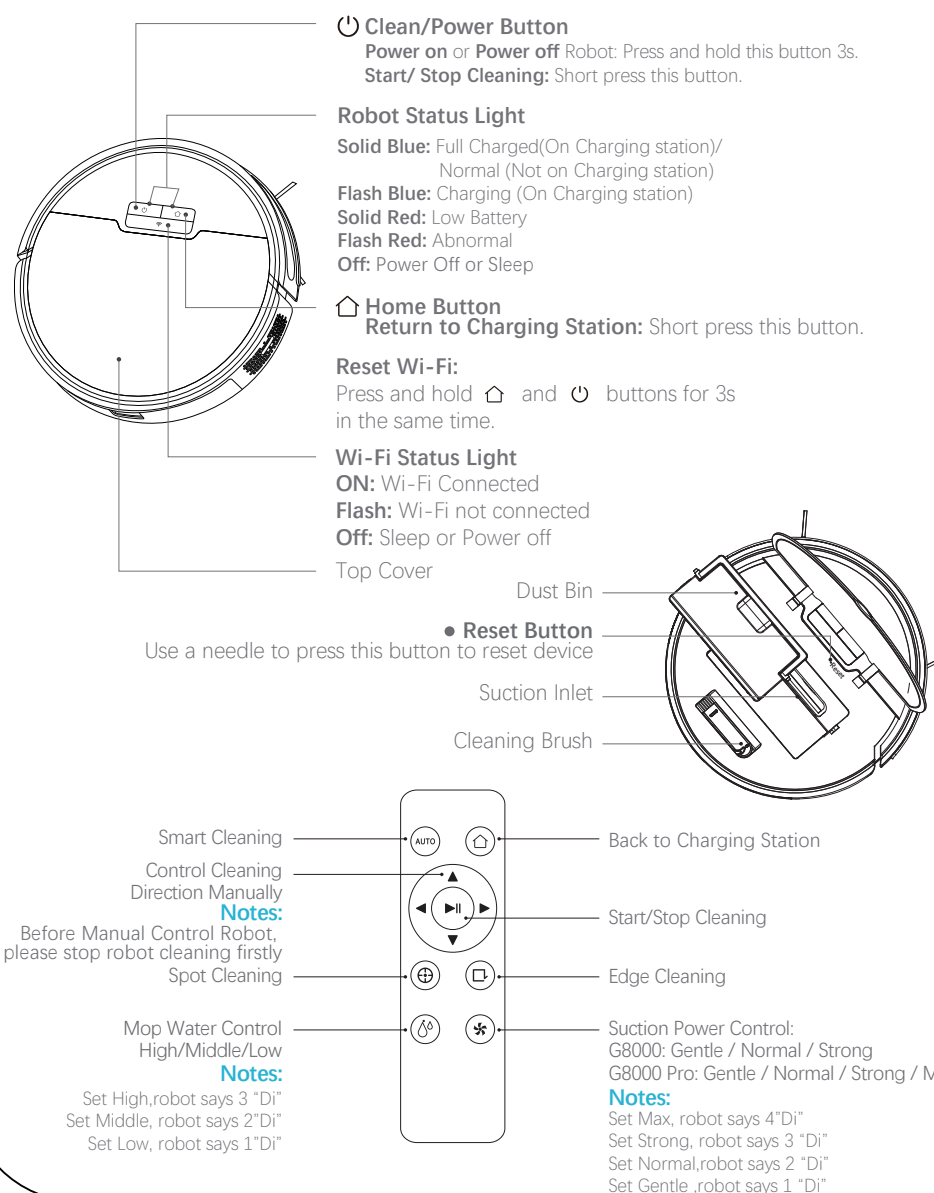
- Please ensure that the Charging Station is always plugged in; otherwise, the Robot will not return automatically.
- Remove objects within 3 ft/1 m on the left and right sides, and within 6 ft/2 m in front of the Charging Station.
- It is recommended to use the provided adhesive tapes to secure the charging station on the ground.



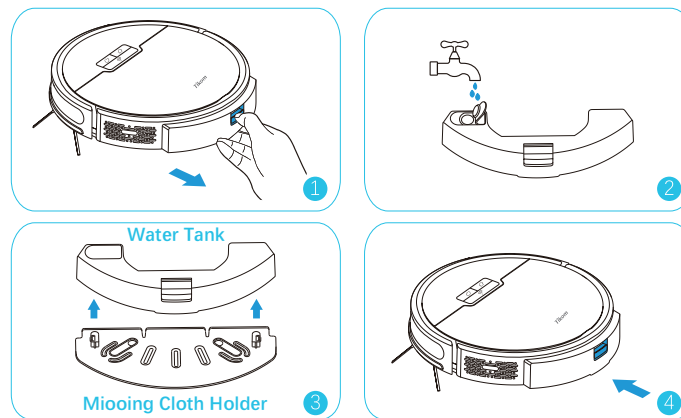
Notes:

Please fully charge the robot before use. Manually align the Charging Contacts on the bottom of the robot with those on the Charging Station. The voice prompt will say "Start Charging".

Buttons & Lights



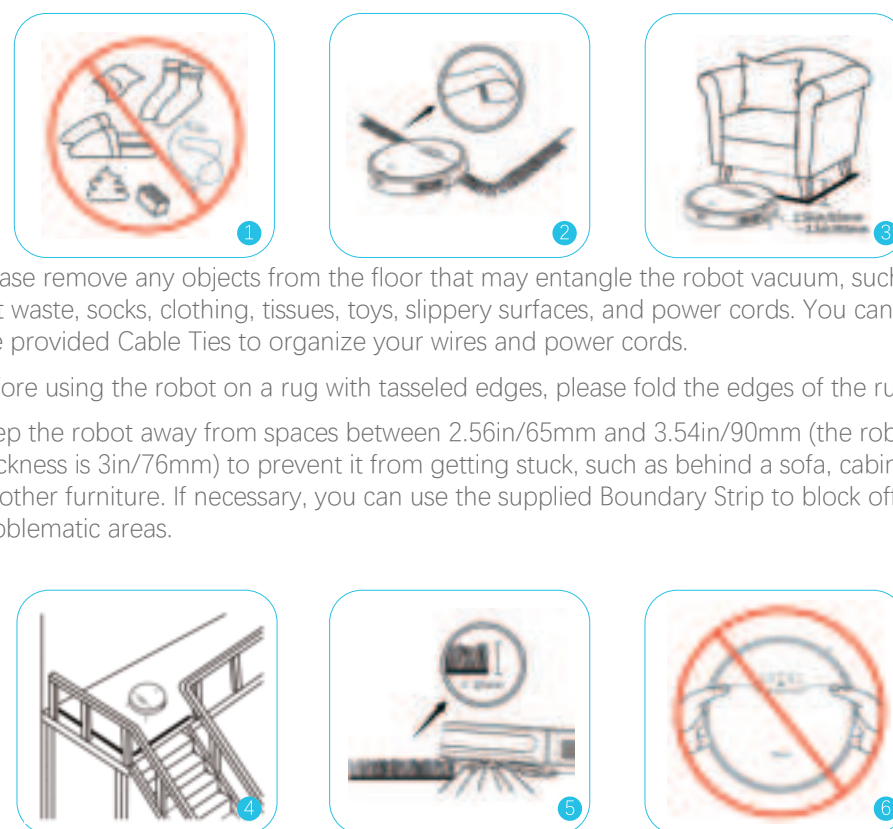
Mopping the Floor



Notes:

1. The robot will detect the mopping cloth holder for mopping. Therefore, before mopping, please install the mopping cloth holder securely onto the robot. If water does not come out during mopping, try checking and reinstalling the mopping cloth holder again.
2. When starting the robot with the mopping cloth holder, the robot will say "start mopping"; the robot will sweep and mop at the same time. When starting the robot without the mopping cloth holder, the robot will say "start Automatically cleaning"; the robot will sweep only.
3. Because carpets cannot be mopped, please remove the mopping cloth holder when cleaning carpeted areas.
4. Floor cleaners or disinfectants may damage the water tank, so do not add them to the water tank. Only clean water is suggested.
5. Please ensure to securely close the water tank plastic cover after filling it with water.

Important Tips Before Usage



1. Please remove any objects from the floor that may entangle the robot vacuum, such as pet waste, socks, clothing, tissues, toys, slippery surfaces, and power cords. You can use the provided Cable Ties to organize your wires and power cords.
2. Before using the robot on a rug with tasseled edges, please fold the edges of the rug under.
3. Keep the robot away from spaces between 2.56in/65mm and 3.54in/90mm (the robot's thickness is 3in/76mm) to prevent it from getting stuck, such as behind a sofa, cabinet, or other furniture. If necessary, you can use the supplied Boundary Strip to block off these problematic areas.
4. Anti-drop sensors will prevent the robot from falling down stairs and steep drops in most cases. However, these sensors are less effective when dirty or used on carpeted, reflective, or very dark-colored floors. It is recommended to use the provided Boundary Strip to block off areas where the Anti-drop sensors may be less effective as described above.
5. Avoid cleaning high-pile rugs thicker than 0.78 in/20 mm, as they may cause the robot to malfunction.
6. While your robot is cleaning, do not pick it up and move it, or move the charging station — this could impact the robot's ability to map your home or back to charging station.



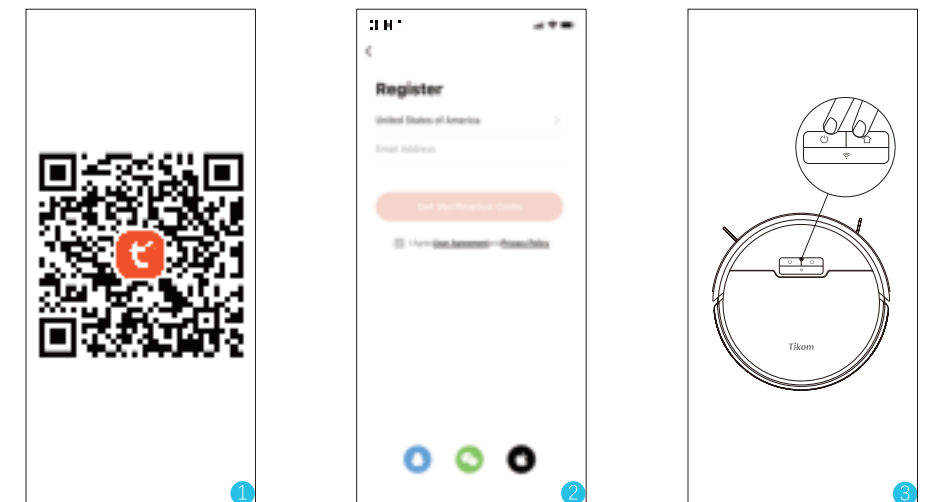
7. To keep Robot away from any area or item you do not want Robot to clean, apply the supplied Boundary Strip on the floor with the supplied adhesive tape to create a virtual barrier. Make sure the strips are placed FLAT on the floor.

APP Connection

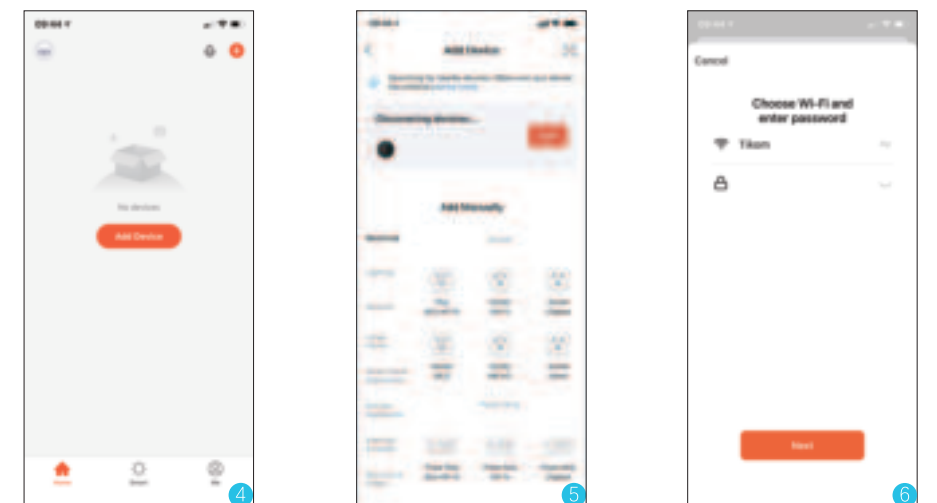
2.4GHz
Wi-Fi Only

Notes:

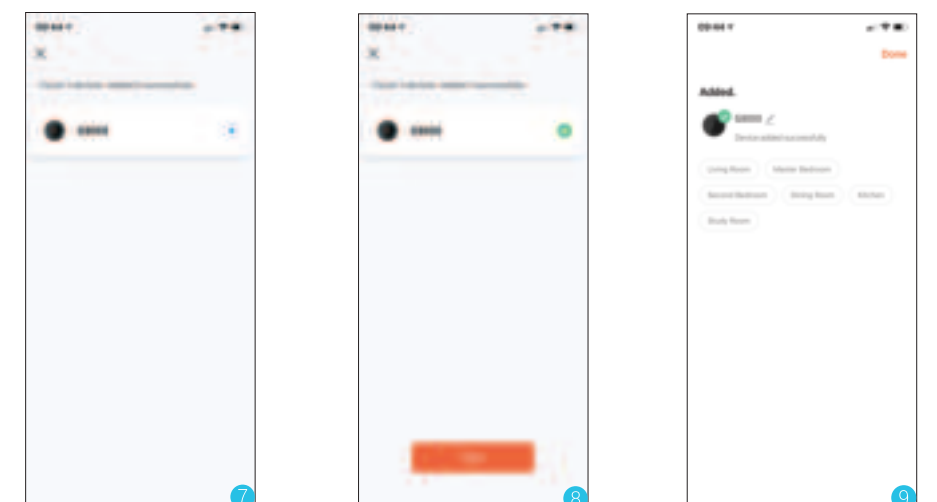
1. Please ensure that the Bluetooth switch on your mobile phone or tablet is turned ON.
2. Place the Robot near the Wi-Fi Router.
3. Make sure your mobile phone is connected to a 2.4GHz Wi-Fi network.
4. If your router supports both 2.4GHz and 5GHz bands, please connect your mobile phone to the 2.4GHz Wi-Fi network.
5. If your router uses the same Wi-Fi name for both the 2.4GHz and 5GHz bands, please access the router control page to rename the 2.4GHz Wi-Fi network with a different name. Then connect your mobile phone to this newly named 2.4GHz Wi-Fi network.



1. Search for TuyaSmart from App Store/Google Play, or Scan above QR code to download APP.
2. Register and log into the APP.
3. Press and hold and buttons on the robot at the same time for 3 seconds, Robot will say "Wi-Fi reset, ready for EZ mode connection", and Wi-Fi Status Light will Fast Flash.



4. Open TuyaSmart app, Tap "Add Device" or "+" at the upper right corner.
5. Robot is discovered, then tap "Add" button.
6. Select the same router's **2.4GHz Wi-Fi** as mobile phone and enter the correct password. Tap "Next".



7. Connecting.
8. Connection successful, and Robot will say "Wi-Fi Connection Successful", and Wi-Fi Status light will be solid. Tap "Next".
9. Connection complete.