

Holoscope

User manual

*** Please read this manual carefully before using the equipment ***

Holoscope

Warn:

1. Do not bend or twist the power cable too much; otherwise, the power cable may be damaged and a fire may occur
2. Do not allow the machine to come into contact with rain or other liquids
3. Do not use or store the machine in high temperature, high pressure and strong magnetic field, dusty and humid environment

Attention:

1. Install the host securely to avoid falling, the power cable may be damaged and a fire may occur
2. Please install the product in a place that cannot be touched by human hands, or buy a protective cover to avoid injury
3. Stable installation: Ensure that the 3D fan will not loosen and fall off during use. After the installation, You can shake the 3D fan vigorously to check whether there is a rocking phenomenon

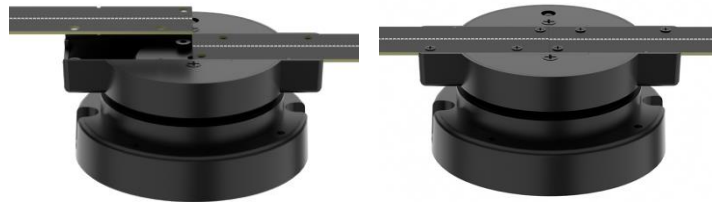
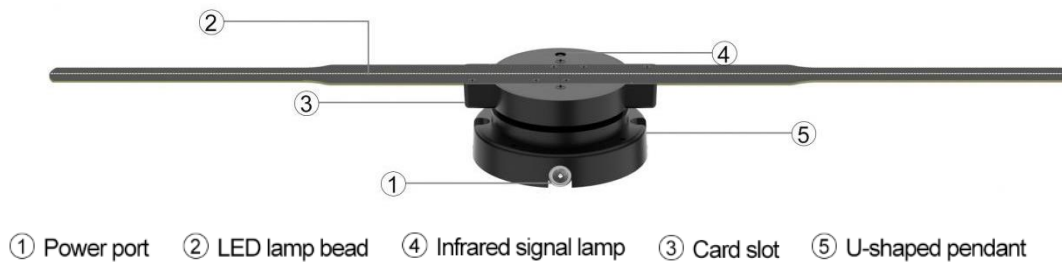
Common faults and maintenance:

1. The device cannot be turned on after being plugged in, and no screen is displayed. Check whether the power supply is normal. After the power supply is powered on, observe whether the power indicator is on.
2. After the device is started, the screen is abnormal or the whole light bar is not on. Check whether the screws are not tightened and whether there are foreign objects in the connector.
3. A black circle appears after the device has been running for a period of time. Because there will be dust and stain on the surface of the lamp bead when the equipment is running, clean the surface of the lamp bead with a soft dry cloth, and usually clean the dust on the lamp board regularly to achieve the most ideal display effect.
4. The following situations do not belong to the scope of free warranty: unauthorized disassembly, maintenance, equipment water, oxidation and other artificial damage

Product specifications and parameters

Product model	PD42- Ordinary brightness	PD42- Highlight	PD45- HD	P50	P56	P62	P65	PZ65
Number of lamp beads (pieces)	244	244	352	576	678	722	768	768
Display diameter (CM)	420*420	420*420	450*450	487*487	560*560	615*615	650*650	650*650
Resolution	1024*640	1024*800	2000*704	2000*1152	2000*1356	2000*1444	2000*1536	2000*1536
Input voltage (V)	12V2A	12V2A	12V2A	24V2A	24V2A	24V3A	24V3A	24V3A
Rated power (W)	18W	20W	24W	48W	48w	72W	72w	72w
Angle brightness control	√	√	√	√	√	√	√	√
Splicing without horns	×	×	×	×	×	×	×	√
Multiple screens are spliced	×	×	√	√	√	√	√	√
High frame rate camera	√	√	√	√	√	√	√	√
Multi-function remote control	√	√	√	√	√	√	√	√
Bluetooth audio	×	×	√	√	√	√	√	√
Package size (MM)	264*143*58	264*143*58	264*143*58	284*185*74	370*195*80	370*195*80	370*195*80	370*195*80

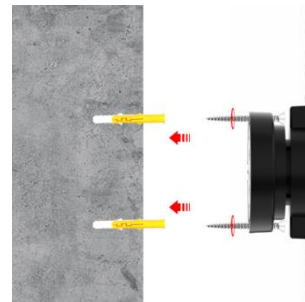
Two blade advertising machine



Installation demonstration:

1. Insert the two blades into the host port, align the six screws with the screw holes, and fix the indicator securely. Otherwise, the indicator strip may fall off.

2. For wall mounting, insert the screws through the wall-mounting holes, align them with the expansion screw tube, and drive them into the appropriate positions.



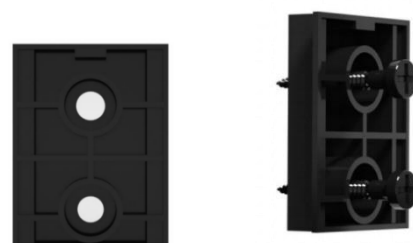
四叶机器展示

Installation instructions:

1. Insert the fan blades into the unit in pairs(A to A, B to B), then tighten 12 screws into the screw holes to secure them. Make sure they are tight or else the light strip may fall off. Installation is complete!



2. When installing the wall mount,

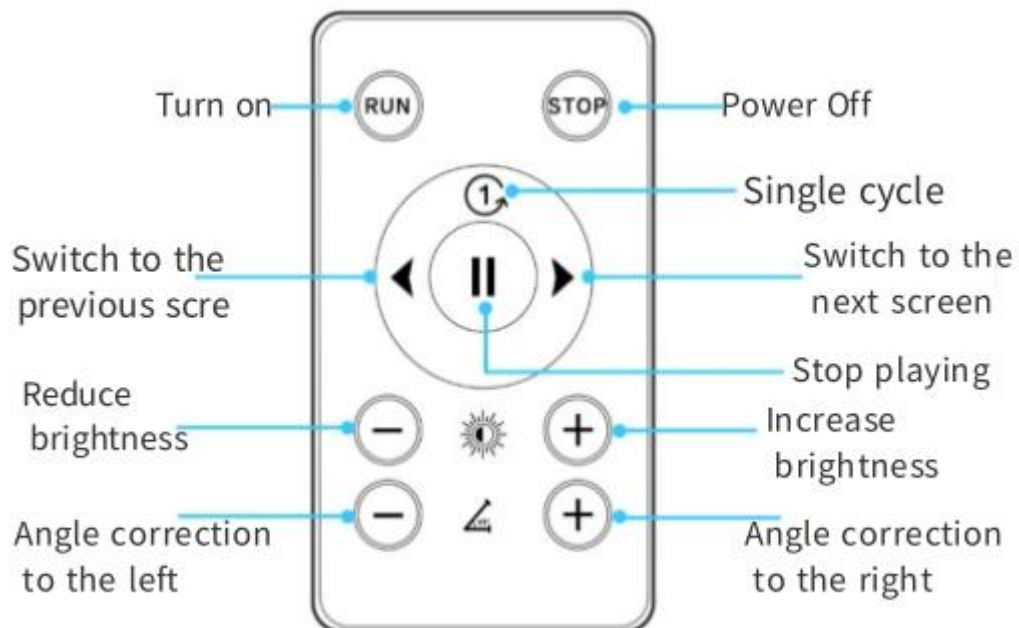


just screw in the screws through the mounting block and into the right spot.

3."Align the U-shaped hanger at the bottom of the host, then push it down and screw the top of the U-shaped hanger on the machine hanger with a small screw to complete installation."



Remote control introduction



Scan and download the APP



Android



IOS

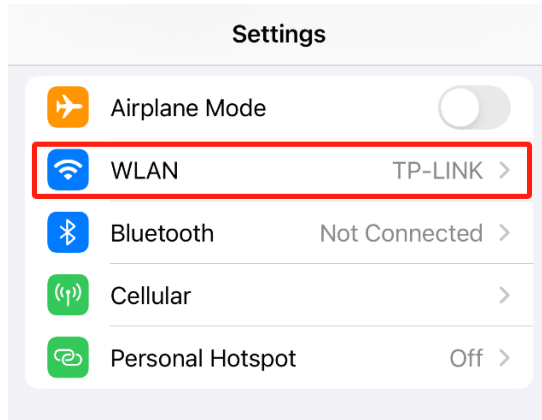
1. Search for Holoscope in the APP store for software download or contact the distributor for download. After downloading, open the app permission and use it.

Mobile APP transmits video

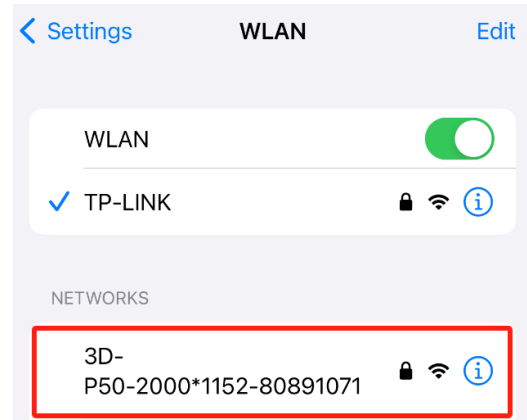
1. After the device is turned on, a WiFi signal will be established. Open the WiFi screen on your phone's Settings and search for WiFi names beginning with 3D-P, for example: 3D-PXXXXXXX; The default password of the WiFi hotspot is 12345678



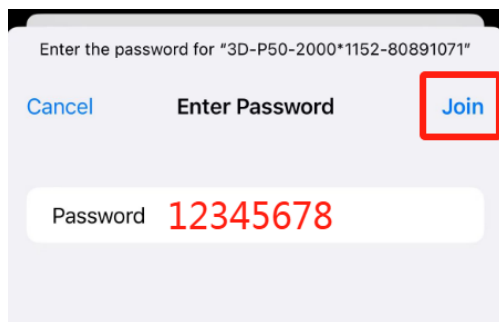
①



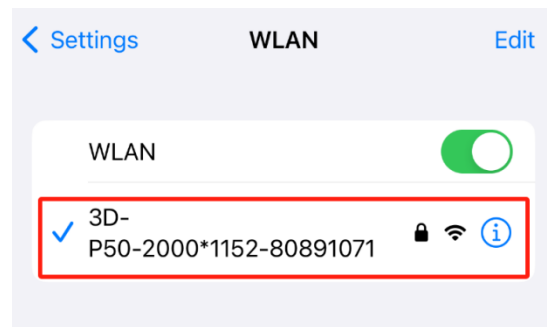
②



③



④



⑤

When a message is displayed indicating that the WLAN cannot be connected to the network, you must select "[Stay connected](#)" And the first time to open the APP prompt must select "[Continue trying to use wireless LAN](#)"

Follow "Figure 1 (Android)" or "Figure 2 (IOS)"

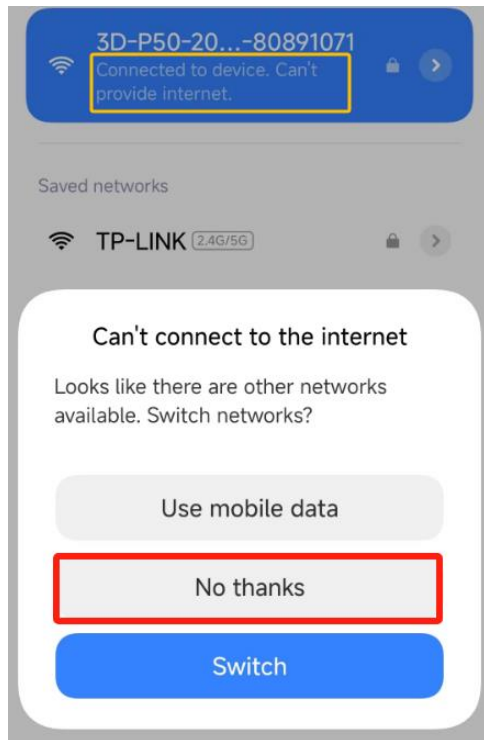


Figure 1 (Android)

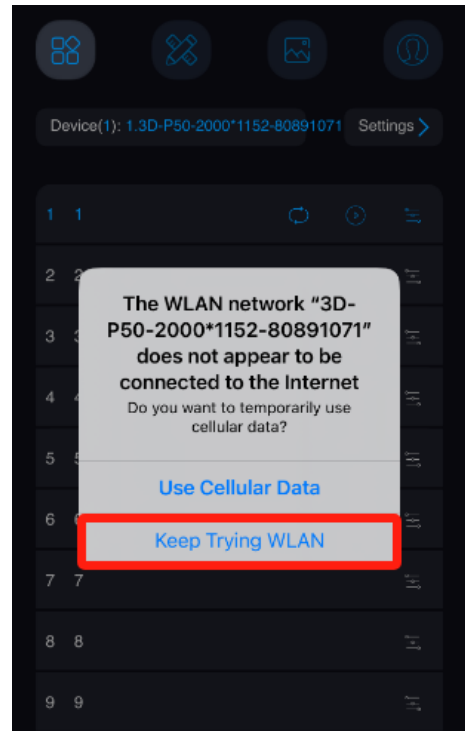
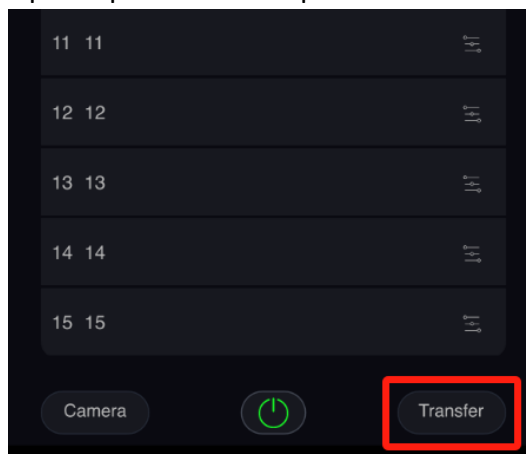
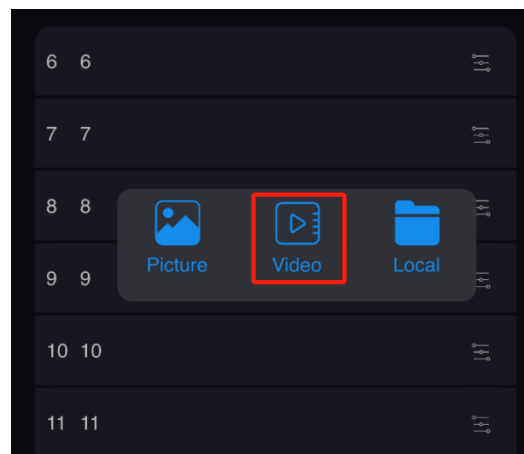


Figure 2 (IOS)

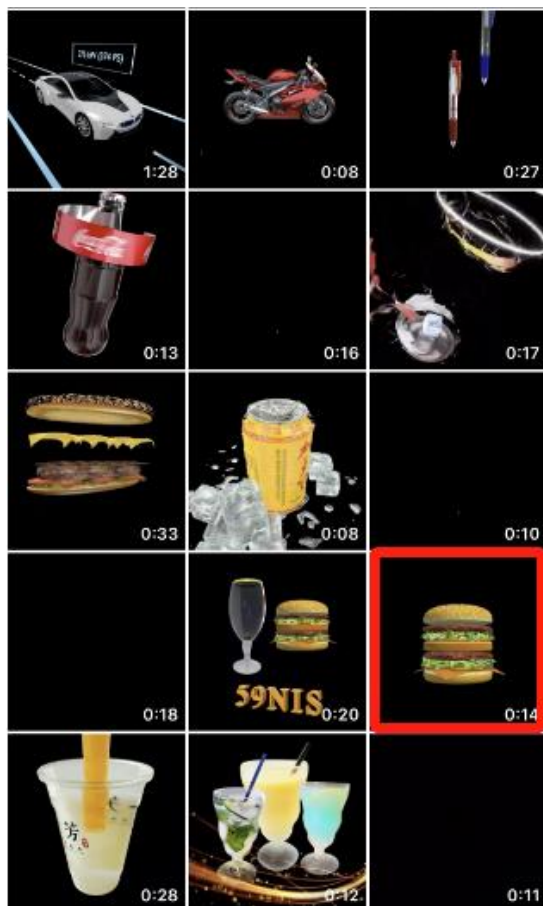
1 Click Transfer → 2 Video → 3 Select Upload video → 4 Confirm content → 5 Upload process → 6 Upload 100%



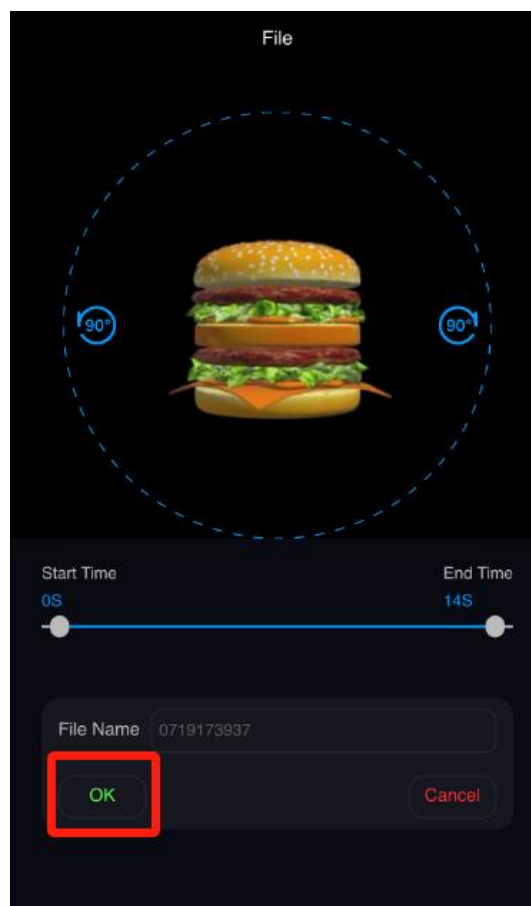
①Click “Trasfer”



②Click “Video”



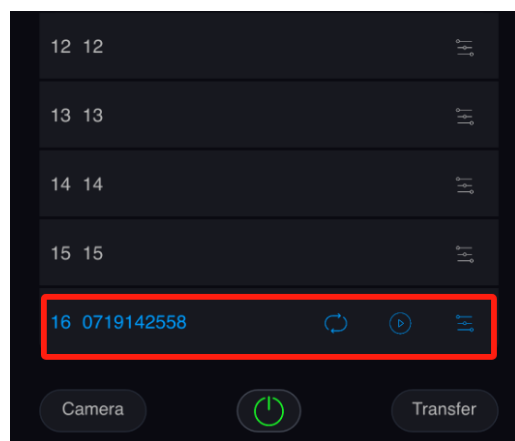
③ Select the video you want to upload



④ Click “OK”



⑤ Uploading



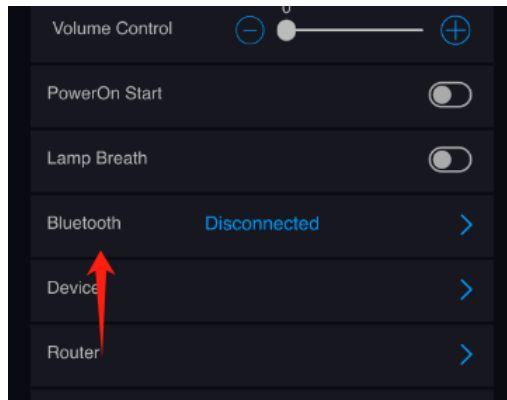
⑥ Transmission complete

The video transfer has been successful, and if you just need to replace the video or add more content, you have done so successfully without having to go through the next steps

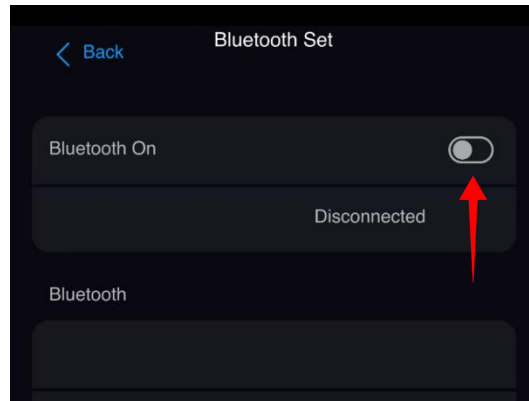
Connect the Bluetooth speaker

1. Click on the APP to set "Bluetooth Settings "(the passwordless Bluetooth speaker must be used, and the transmitted video must have specific sound)

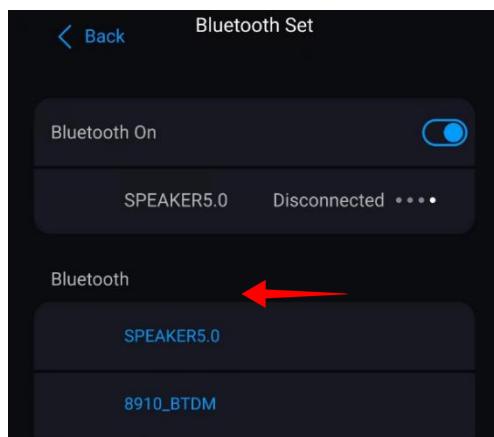
Bluetooth Settings Turn on Bluetooth → Wait for automatic search for Bluetooth speaker → Connected (video must have specific sound)



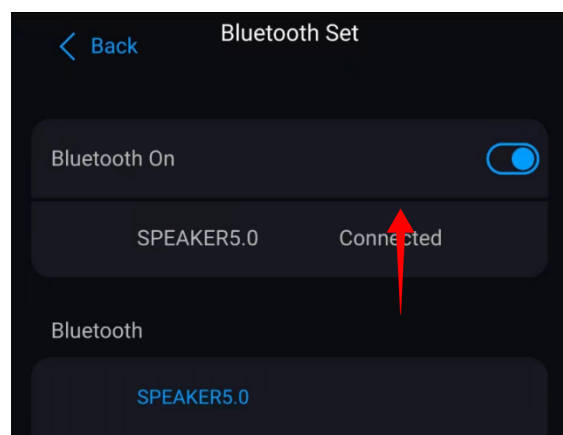
① Click "Bluetooth"



① Bluetooth On



③ Wait for the Bluetooth speaker



④ Connected to be automatically searched

Text LOGO making

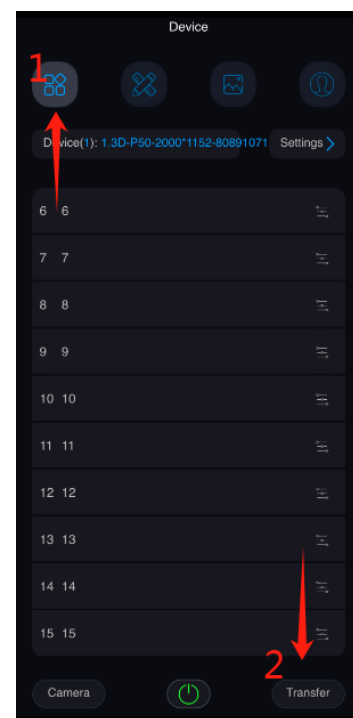
Design → Select Template → Save → Click Transfer → Select Local → Select Video → Transfer



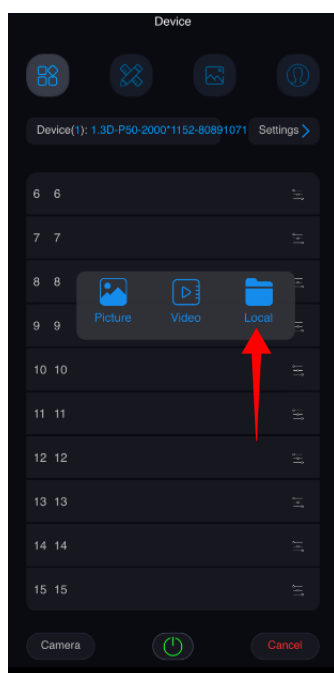
① Click design



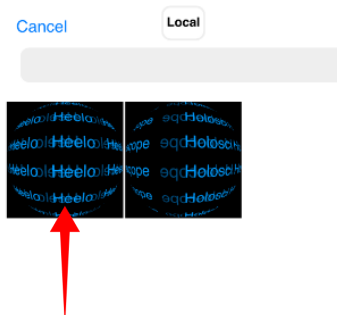
② Save



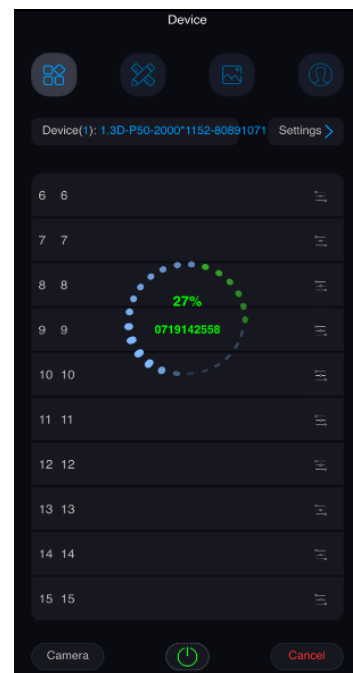
③ Back to page transfer



④ Select Local



⑤ Select video



⑥ In transmission

Instructions for using the PC

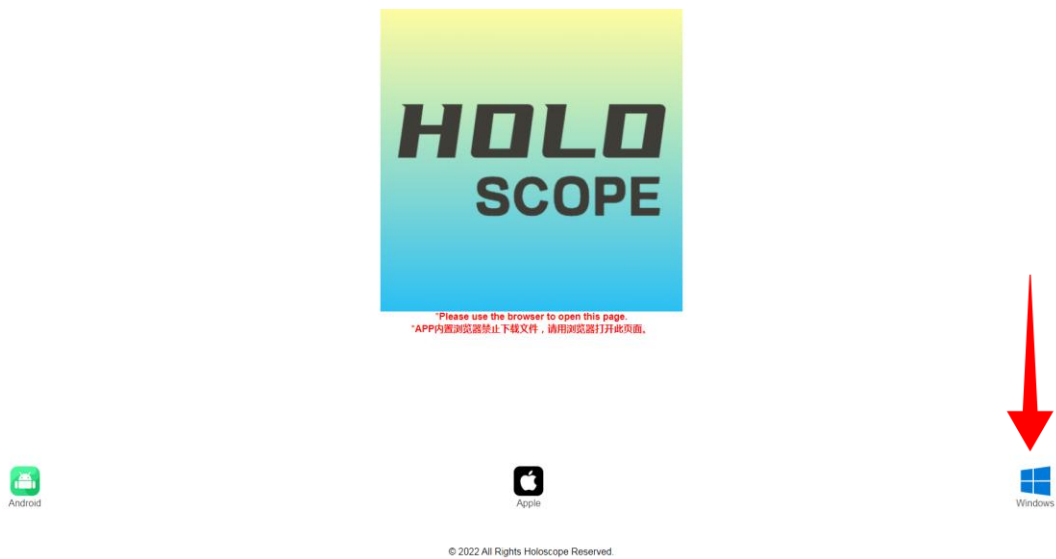
Download link: <http://bg.holoscope.tech/sh/apk/app/getLastAPK/0>

After the device is powered on, the WiFi signal will be established. Open the WiFi

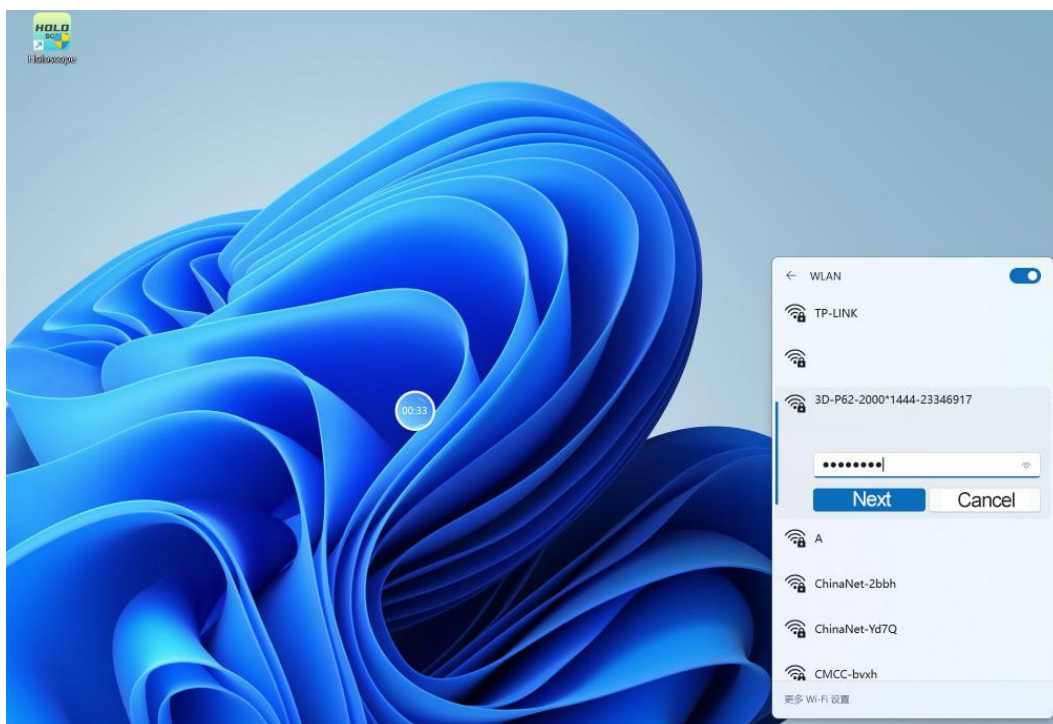
interface of the computer and search for the name of WiFi beginning with 3D-P, for example, 3D-PXXXXXXXX. The default password of WiFi is **12345678**. Enter

password Click join

Download Software Connection → Connect to WIFI



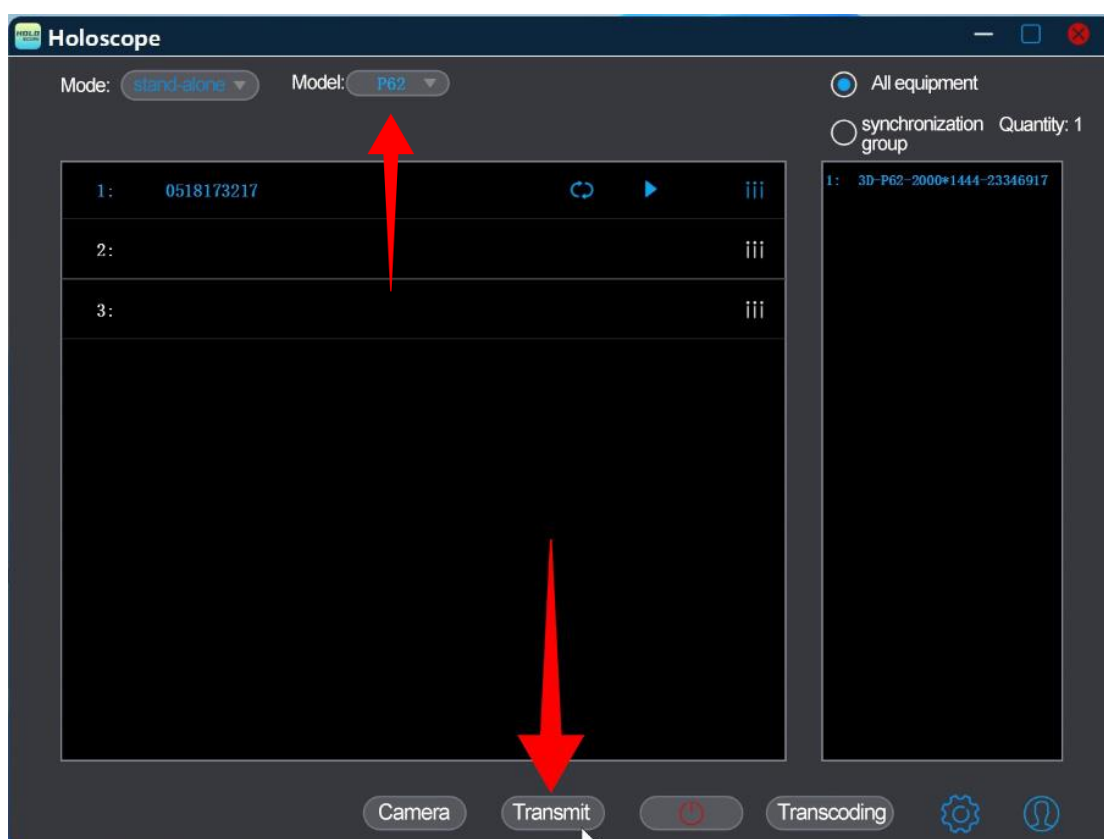
① Download software



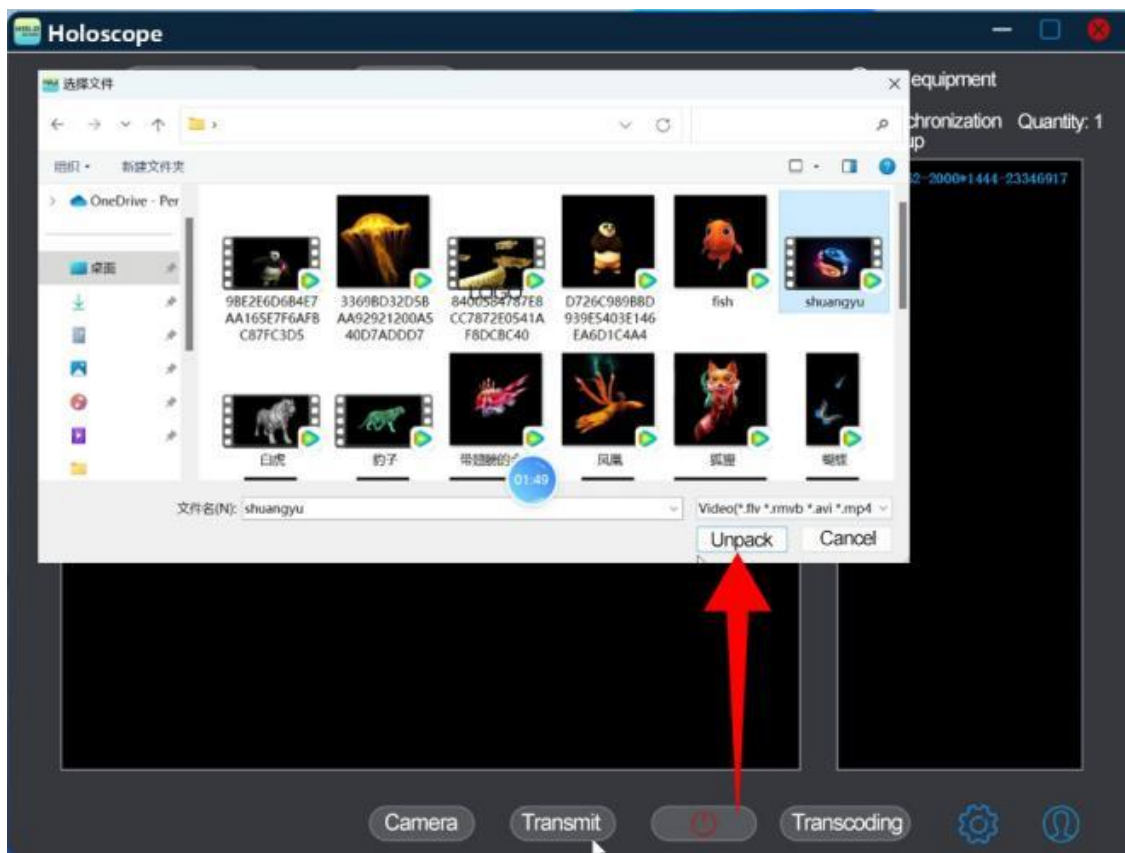
② Connect to WIFI

The PC transmits the video

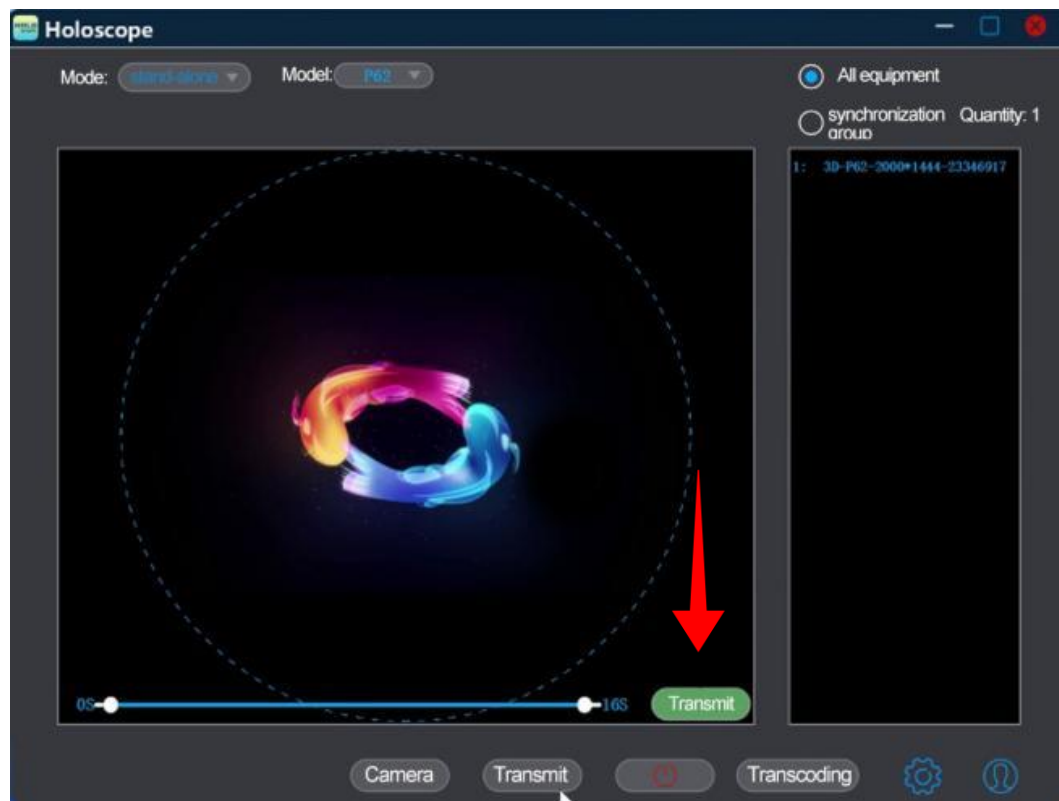
Open software → Select machine model → Open



Transfer



④ Select the video you want to upload



⑤ Start transmissio



⑥ Wait for transmission

FCC Warning:

This equipment has been tested and found to comply with the limits for a Class B digital device, pursuant to part 15 of the FCC Rules. These limits are designed to provide reasonable protection against harmful interference in a residential installation. This equipment generates, uses and can radiate radio frequency energy and, if not installed and used in accordance with the instructions, may cause harmful interference to radio communications. However, there is no guarantee that interference will not occur in a particular installation. If this equipment does cause harmful interference to radio or television reception, which can be determined by turning the equipment off and on, the user is encouraged to try to correct the interference by one or more of the following measures:

- Reorient or relocate the receiving antenna.
- Increase the separation between the equipment and receiver.
- Connect the equipment into an outlet on a circuit different from that to which the receiver is connected.
- Consult the dealer or an experienced radio/TV technician for help.

Caution: Any changes or modifications to this device not explicitly approved by manufacturer could void your authority to operate this equipment.

This device complies with part 15 of the FCC Rules. Operation is subject to the following two conditions:

(1) This device may not cause harmful interference, and (2) this device must accept any interference received, including interference that may cause undesired operation.

This equipment complies with FCC radiation exposure limits set forth for an uncontrolled environment. This equipment should be installed and operated with minimum distance 20cm between the radiator and your body.