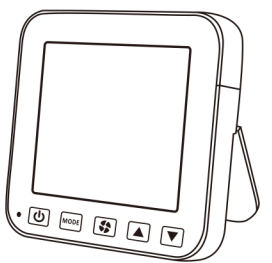


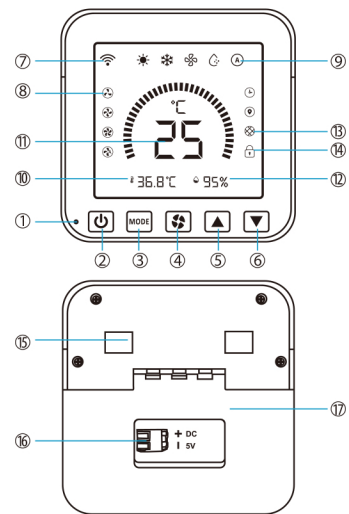
Smart Air Conditioning Controller

INSTRUCTION



Thanks for
Choosing our WiFi Smart Home Sensors

Product Configuration



- Indicator light (blue)
- Control open / close
- Mode switch (10 seconds reset)
- Fan speed adjustment (press 10 seconds to start / disarm the child lock)
- Temperature +
- Temperature-
- Wi-Fi signal indication
- Fan speed display
- Mode display
- Ambient temperature
- Air conditioning temperature
- Ambient humidity
- Ash removal tips
- Child lock
- Hanging hole
- DC 5V wiring for power supply
- Back bracket

Installation

1. Hanging on the wall

1-1 Mounting plate installation

- Prepare for a power converter and connect to home electricity
- Pass the output through the small round hole in the mounting plate

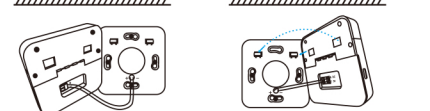


- Fix the mounting plate with screws
- Finish!

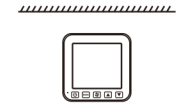


1-2 Device installation

- Finished Mounting plate installation diagram
- Connect the output into the device (Pay attention to distinguish between positive and negative poles)



2. Put on the table



Specifications

Power supply: DC 5V / 1A
Power Interface: Type-c USB;
DC 5V wiring for power supply
Wi-Fi type: 2.4GHz
Wi-Fi standard: IEEE 802.11b/g/n
Maximum wireless range: 45m
Display screen: LCD controllable backlight screen
Working current: 550mA
Standby current: 25mA
Temperature control range: 16°C ~30°C
Temperature detection range: 0°C ~50°C (32°F ~122°F)
Humidity detection range: 0~95%RH (no condensation)
Detection accuracy: temperature: 0.3 humidity :5%RH
Bluetooth version: Bluetooth 5.0
Remote control distance: 7M
Release screen time: 60s
Operating temperature: -0°C ~50°C (32°F ~122°F)
Operating humidity: 0~90%RH (no condensation)
Product size: 88mm x 88mm x 16mm

LED State

Device Status	LED State
Smart Wi-Fi mode	Fast flashing: 2 times/second
AP Compatibility mode	Slow flashing: 2 seconds/time
Reset/Switch to inclusion mode	Long press the MODE key for 10 seconds
Remarks	1. The indicator color is blue; 2. The Bluetooth distribution network can be used in any inclusion mode

Get Started

1. Download APP

Download the "Smart life" app from APP Store or Google Play to your mobile.



2. Register and Login

2-1 Launch the "Smart life" app.

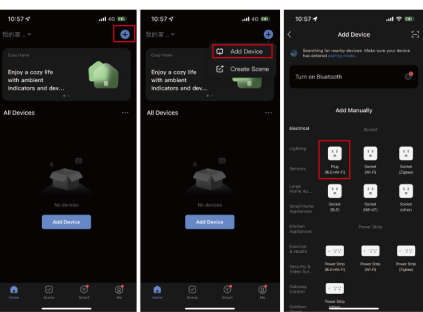
2-2 To register, enter your mobile phone number or email address, create a password, then login to the app.

2-3 Login if you have an account already.

3. Add Device

3-1 Wi-Fi Mode(Default)

- If you have not turned on the Bluetooth function of your phone, please add devices manually.
- Select the "+" symbol on the top right-hand corner.
- Click "Add Device"-- Add Manually "Plug(BLE+Wi-Fi)" enter Wi-Fi Mode.

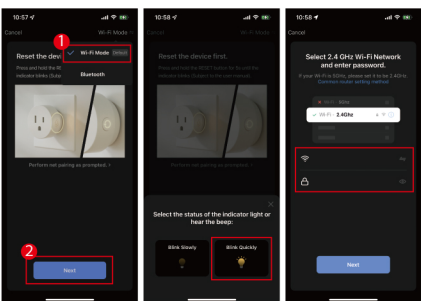


Note:

- If the indicator light is off, please press and hold the reset button for 6 seconds, then add the device according to the status of the indicator light.
- All Wi-Fi products can be added with any Wi-Fi option, and the device only supports 2.4GHz Wi-Fi signals.

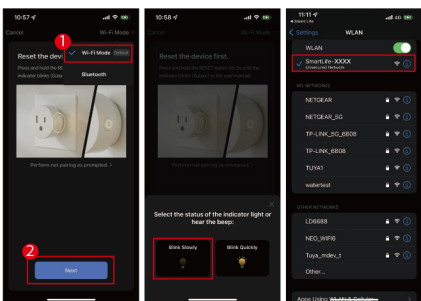
3-1-1 Smart Wi-Fi Mode

Press the reset button until the device turns into the indicator light blink quickly, then follow the APP prompts to add.



3-1-2 AP compatible Mode

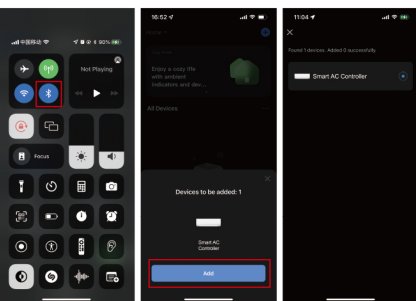
Press the reset button until the device turns into the indicator light blink slowly, then follow the APP prompts to add.



3-2 Bluetooth Mode

3-2-1 Bluetooth Pairing(Add Automatically)

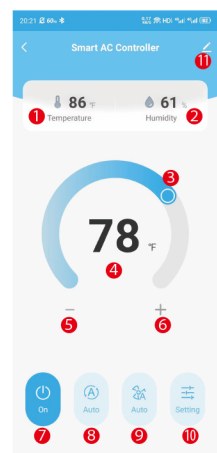
- First open the bluetooth function of your.
- Then enter the app, the "Devices to be added" window will pop up automatically.



3-2-2 Bluetooth network (Add Manually)

- If it does not automatically pop up, you can add the device by following the steps below.

Functions and Settings



4 Working Status, Record and Settings

4-1 Ambient temperature

4-2 Ambient humidity

4-3 Set the temperature

4-4 Current set temperature

4-5 Temperature down

4-6 Temperature up

4-7 Air conditioning on / off

4-8 Air conditioning switch mode

The state of air conditioning can be adjusted to Cold/Heat/Auto/Fan/Dry

4-9 Fan speed regulation

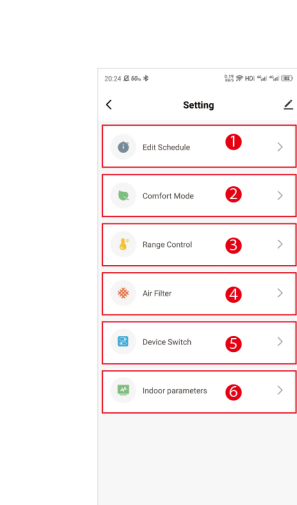
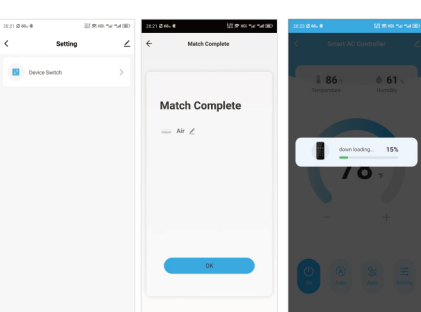
Auto, Low, Medium, High

4-10 Setting

Air conditioning needs to be added to perform more settings

Add air conditioning

Click "Settings", select the brand of air conditioning to add, after inclusion, the infrared code library will be automatically downloaded. After downloading, you can use it.



4-10-1 Edit Schedule (Figure 1, 2)

Set the air-conditioning timing and execution state

4-10-2 Comfort Mode (Figure 3, 4)

Set the comfort range, when the ambient temperature and humidity exceeds the set range, the air conditioner automatically performs the setting

4-10-3 Range Control (Figure 5, 6)

Temperature range: modify the temperature scale; set the adjustable range of air conditioning temperature

4-10-4 Air Filter (Figure 7)

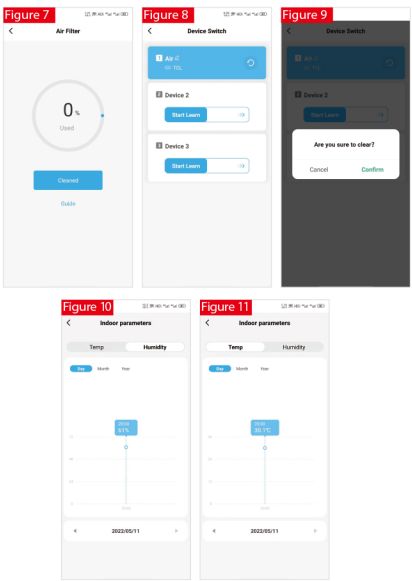
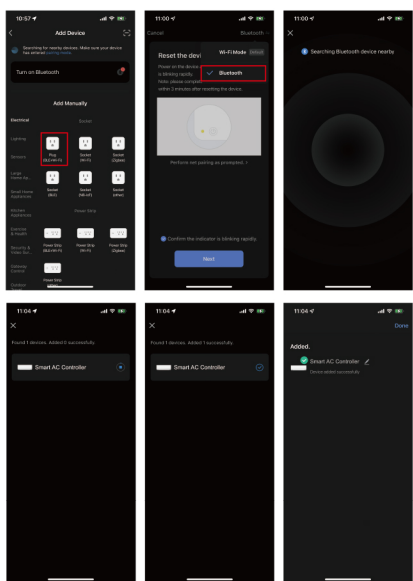
Filter setting: according to the air conditioning use time, remind cleaning

4-10-5 Device Switch (Figure 8, 9)

Replace the air conditioner connected to the equipment, up to 3 at the same time. Click the button to delete the connected air conditioner

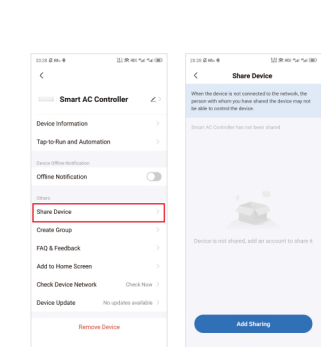
4-10-6 Indoor parameters (Figure 10, 11)

Statistical change of ambient temperature and humidity during the time



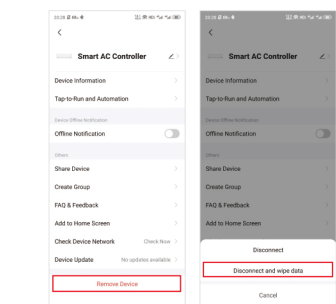
4-11 Device Settings

4-11-1 Share Device



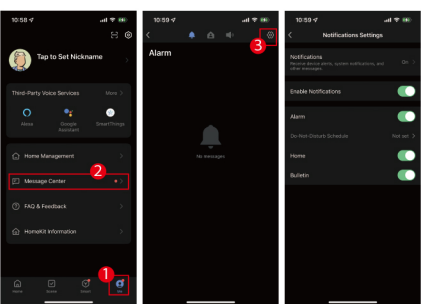
4-11-2 Remove Device

Clear records; Delete the device through the APP and add the device again to clear the historical record



Push Notification Setting

If it is disabled, all devices in the APP will not receive notification, but message records will not be affected.



You can experience more functions of the product with the app, just try and do it yourself.

Due to the app update, the above interface is for reference only



Make Your Home Smarter