

Hardware Quick Start Guide

Welcome! Let's get started.

To start using your NVR, you need the following:

- 1. A high-definition TV capable of displaying 720p or 1080p video. Look at the ports on the back of your TV to make sure it has an HDMI input.
- 2. A router with a broadband internet connection.
- 3. A mobile device (Android or iOS) to download the free HomeSafe View app.

Carefully unpack each item and discard any packaging not required.

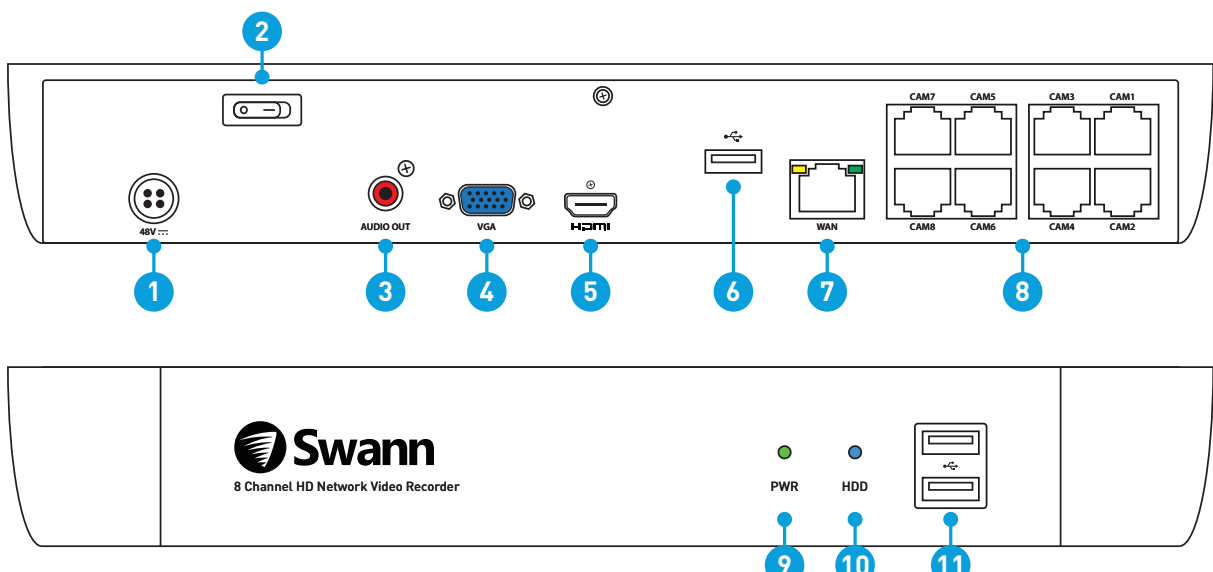


READ ME FIRST!

QH4816\_8580\_011217E | © Swann 2017

Getting to know your NVR

Congratulations on the purchase of your Swann NVR. This Quick Start Guide will assist you on getting your NVR up and running as soon as possible. To make sure nothing was damaged during shipping, we recommend that you connect everything and give it a try before you do a permanent installation.



- 1. Power Input
- 2. Power Switch
- 3. Audio Output
- 4. VGA Port
- 5. HDMI Port
- 6. USB Port
- 7. Ethernet Port
- 8. Camera Inputs
- 9. Power LED
- 10. Hard Drive LED
- 11. USB Ports

Your NVR is designed to ventilate air to keep it at an optimal temperature. Keep both sides of your NVR free from obstructions to allow it to ventilate.

Look out for the light bulb icon for tips on the operation of your NVR.

8 channel model illustrated. The 4 and 16 channel models have four and sixteen camera inputs respectively.

What does this mean?

- 1. Power Input:** Connect the 48V power adapter here.
- 2. Power Switch:** Press the switch to turn on your NVR.
- 3. Audio Output:** For connecting to a stereo or amplifier. This is not required when using the HDMI port.
- 4. VGA Port:** Connect this to your monitor with a VGA input (VGA cable not supplied). This is not required when using the HDMI port.
- 5. HDMI Port:** Connect this to your TV with a HDMI input (HDMI cable supplied).
- 6. USB Port:** Connect your mouse here.
- 7. Ethernet Port:** Connect this to your router so your NVR can connect to the internet.
- 8. Camera Inputs:** Using the provided Ethernet cables, connect your cameras here.
- 9. Power LED:** Indicates your NVR has power.
- 10. Hard Drive LED:** Flashes when the hard drive is active.
- 11. USB Ports:** Connect a USB flash drive to either port to copy recorded events or to perform a firmware upgrade.

FCC Warning Statement:

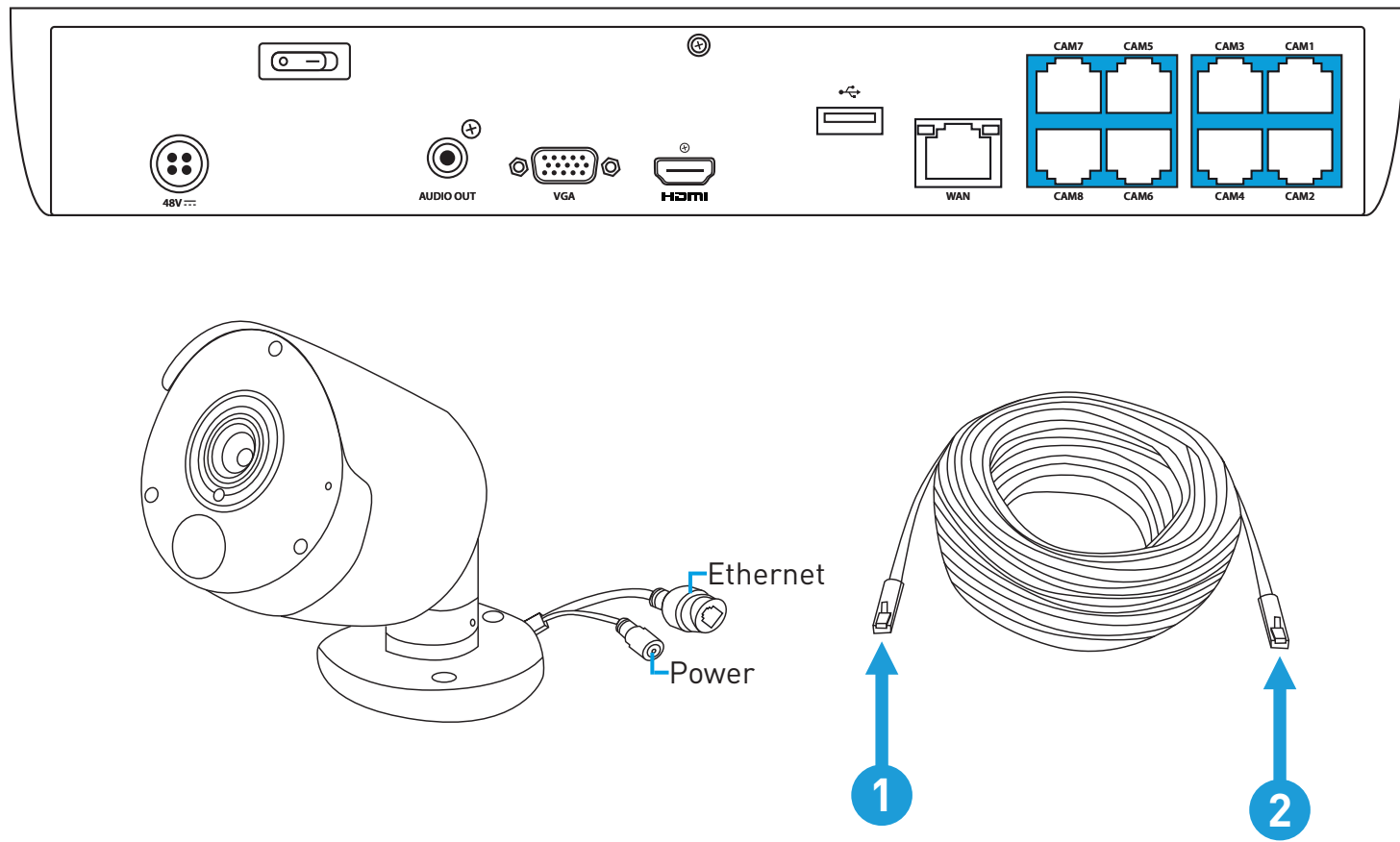
This device complies with part 15 of the FCC Rules. Operation is subject to the following two conditions: (1) This device may not cause harmful interference and (2) this device must accept any interference received, including interference that may cause undesired operation.

Battery Safety Information:

- This product contains a coin or button cell battery. If the cell battery is swallowed, it can cause severe internal burns and can lead to death. Keep away from babies and small children at all times.
- If the battery is swallowed, immediately seek medical help
  - Risk of explosion if battery is replaced by an incorrect type
  - Dispose of used battery properly

Step One: Connect your Cameras

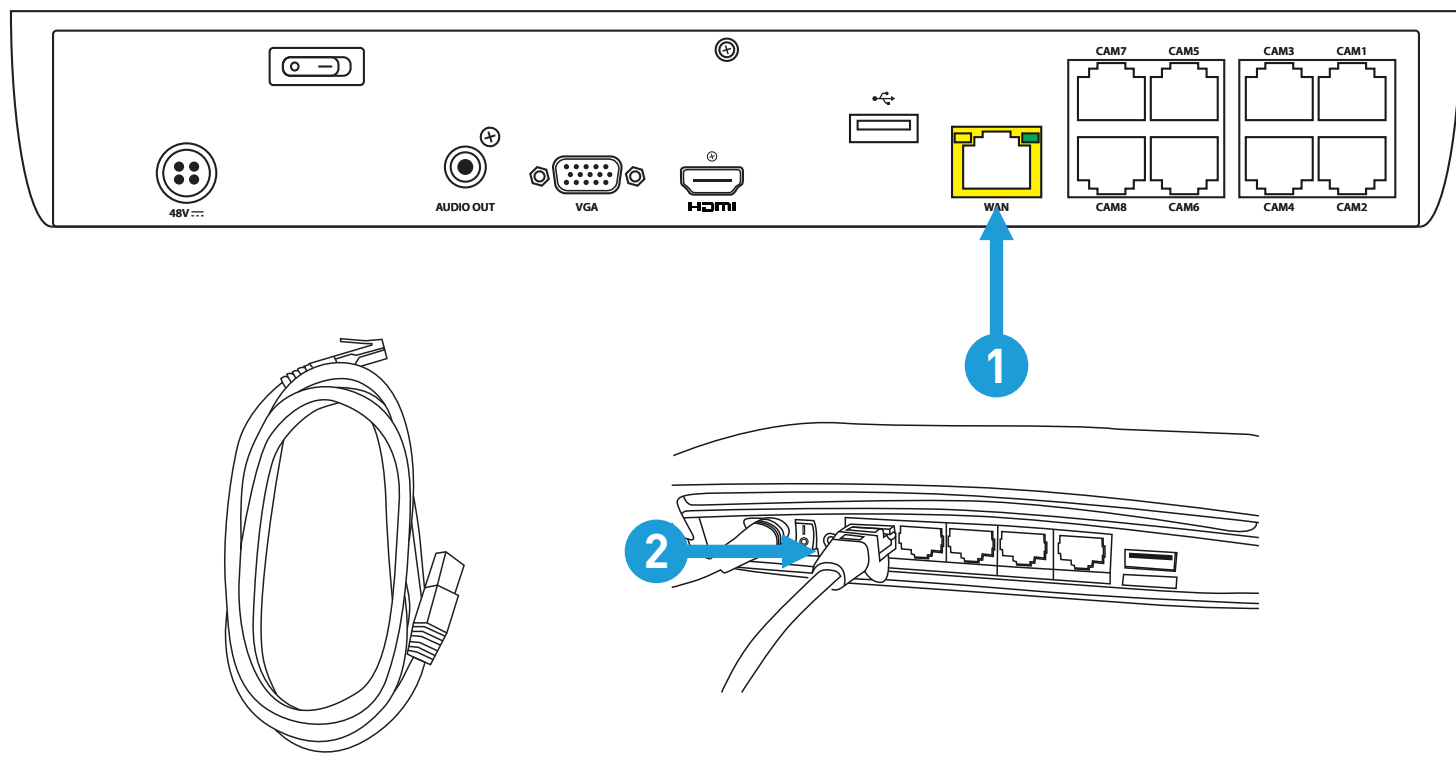
Connect the supplied Ethernet cable (1) to the Ethernet connection on the camera then plug the other end of the cable (2) into one of the camera inputs.



**Please note:** The NVR will provide power over the Ethernet cable when connected. To adjust the camera angle, the bullet camera has three points of articulation. Turn over the guide for more information.

Step Two: Connect to your Home Network

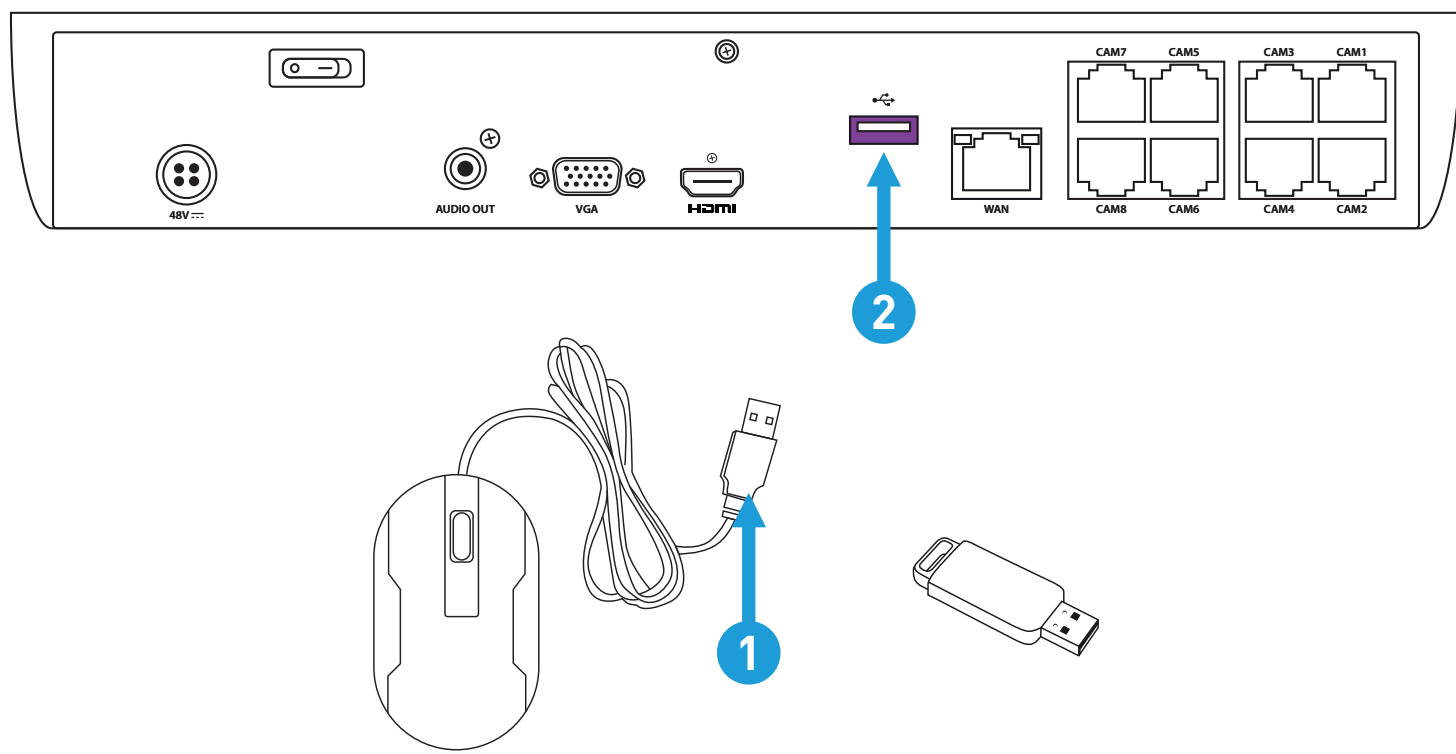
Connect the supplied Ethernet cable to the Ethernet port (1) then connect the other end to a spare port (2) on your router. Don't proceed to the next step until this is done.



**Please note:** It's important that you do this as this allows your NVR to send email alerts, synchronise its internal clock and to view your cameras remotely using the HomeSafe View app.

Step Three: Connect your Mouse

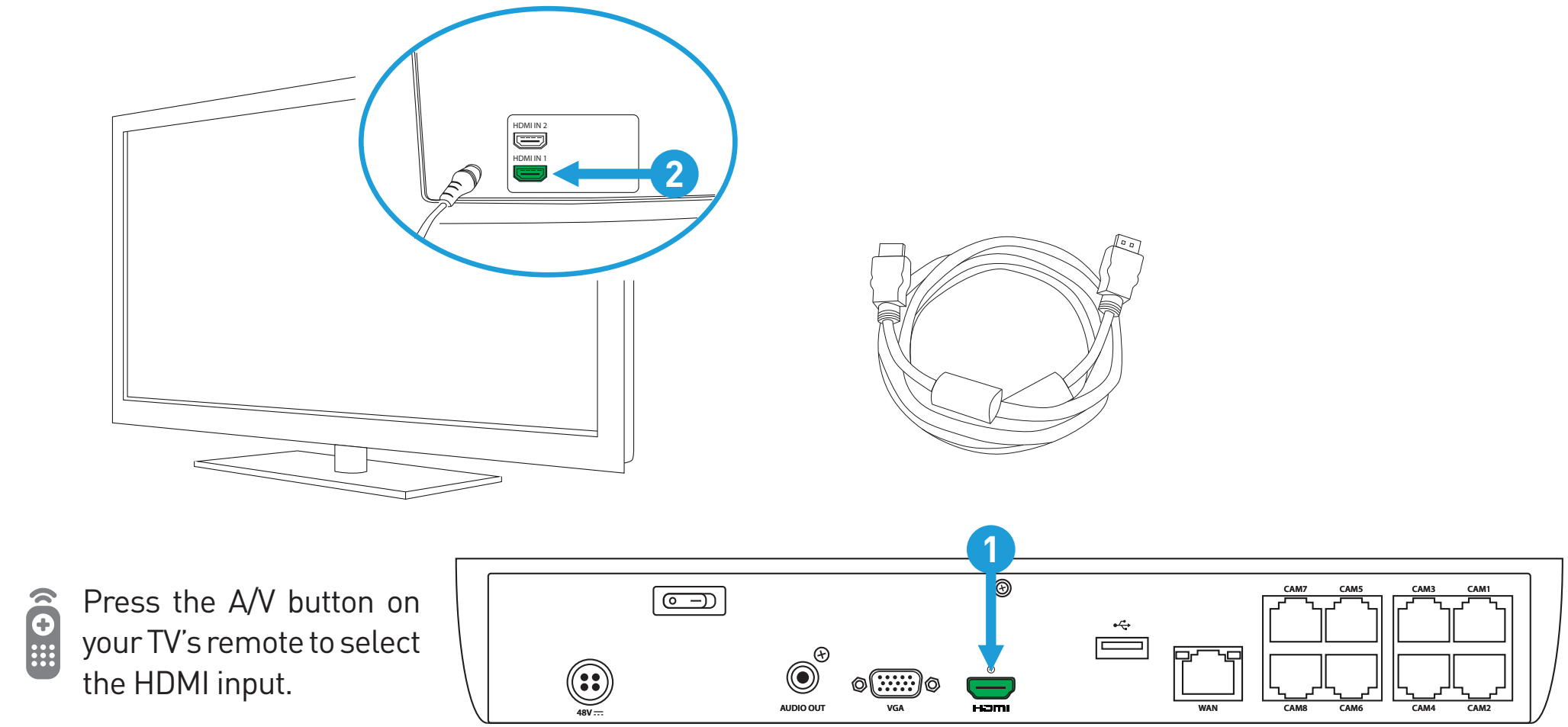
Connect the supplied mouse (1) to the USB port (2) located at the rear. To copy recorded events and to perform a firmware upgrade, connect a storage device such as a USB flash drive (not included) to one of the front ports.



**Please note:** Bluetooth and wireless mice and trackpad devices are not supported. Not all USB storage devices are supported.

Step Four: Connect to your TV

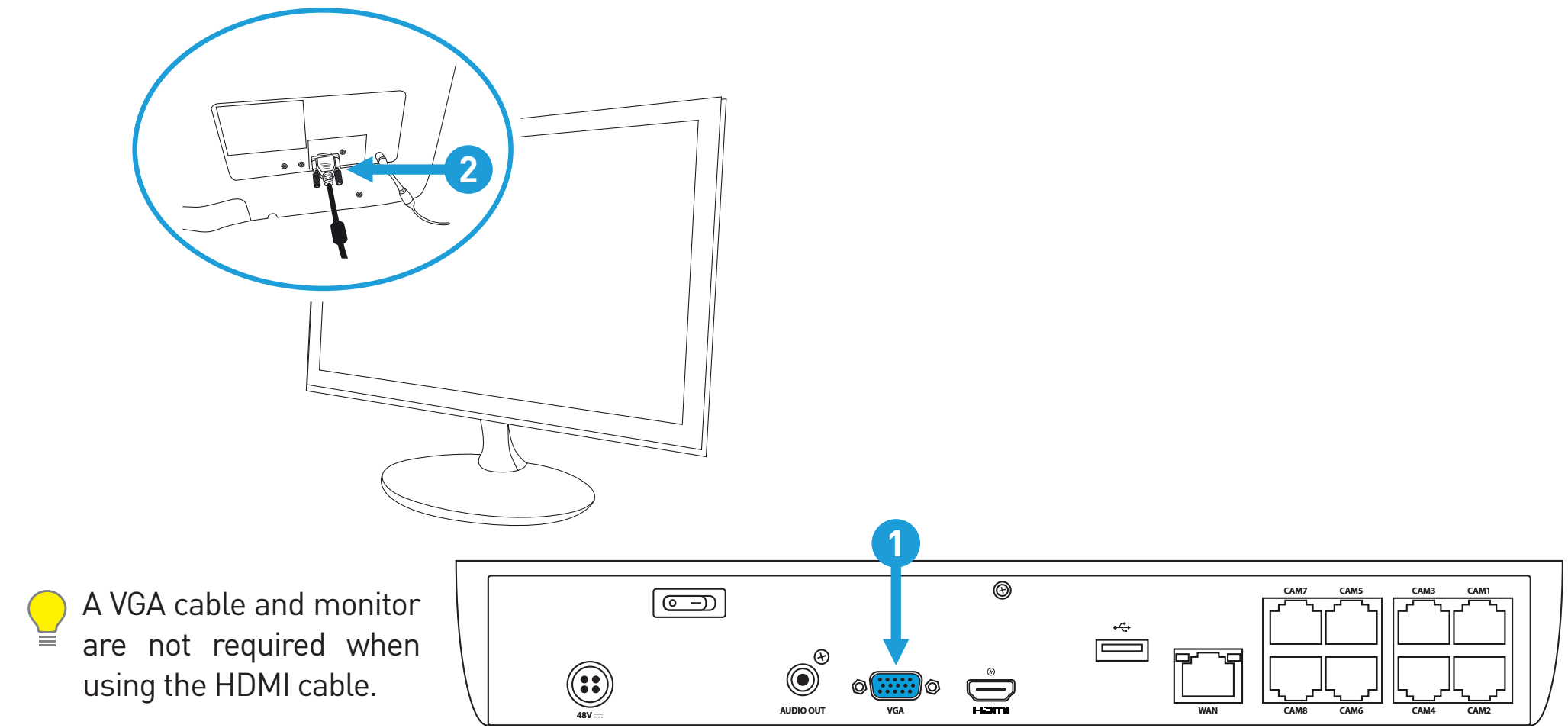
Connect the supplied HDMI cable to the HDMI port (1) then connect the other end to a spare HDMI input (2) on your TV. The labels on the back of your TV indicate which input you need to select when your NVR is turned on.



Press the A/V button on your TV's remote to select the HDMI input.

Step Five: Connect to your Monitor

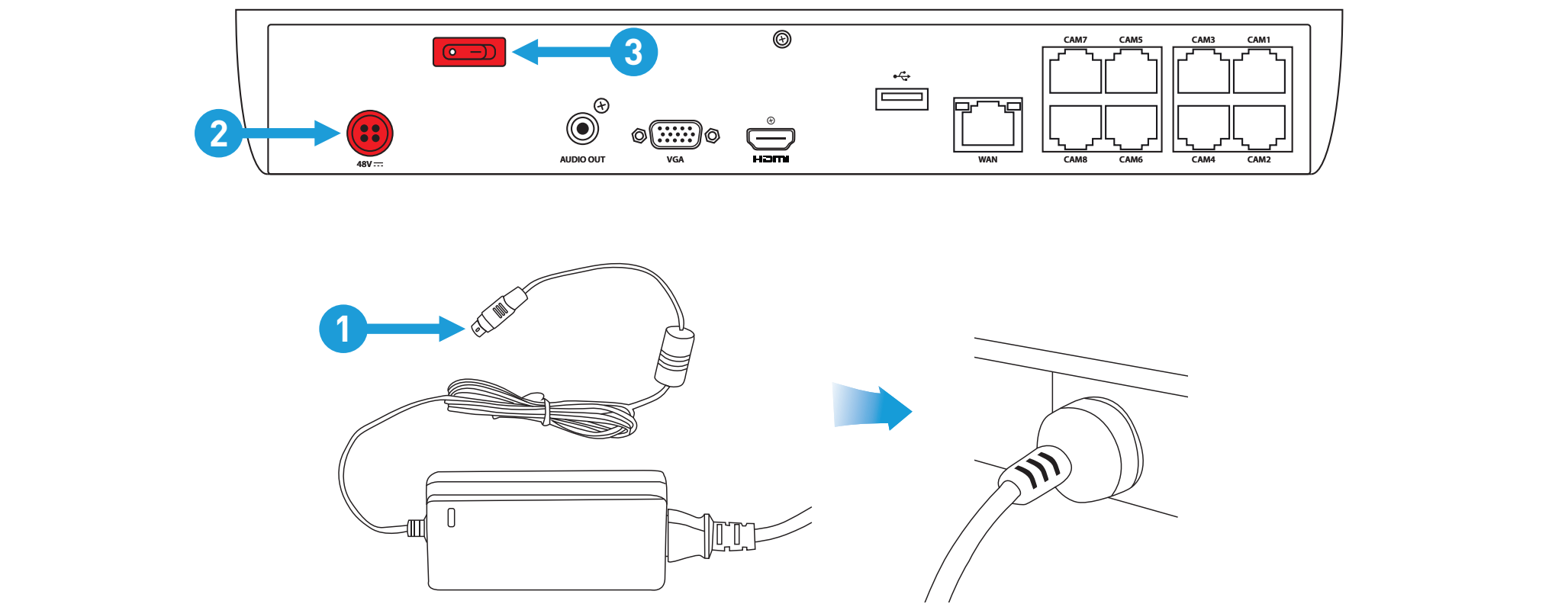
If you have a monitor with a VGA connection, connect a VGA cable (not supplied) to the VGA port (1) then connect the other end to the VGA input (2) on your monitor.



A VGA cable and monitor are not required when using the HDMI cable.

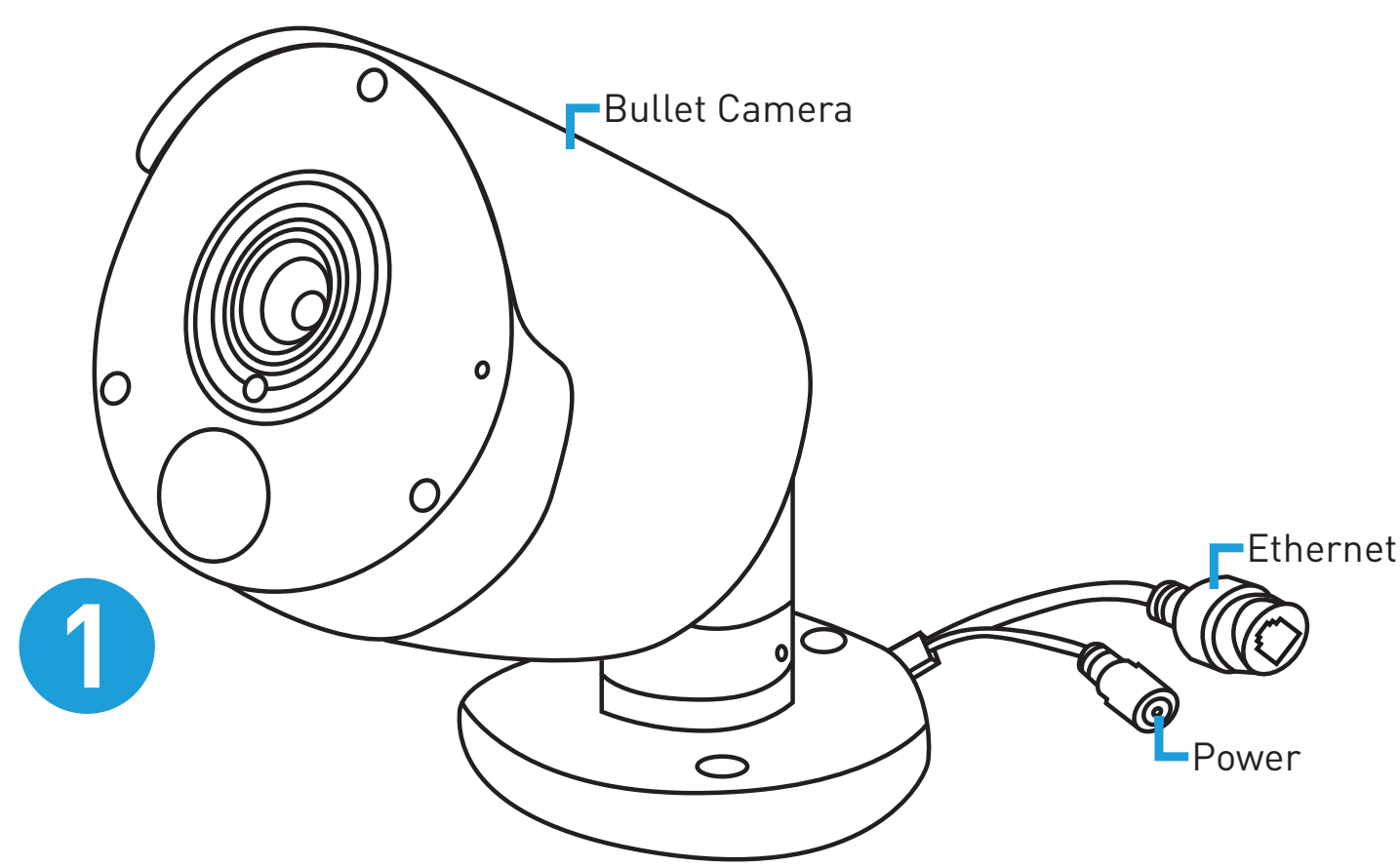
Step Six: Connect your Power Adapter

Connect the supplied power adapter (1) to the power input (2) first then connect the supplied power cable to the other end of the power adapter. Connect the power cable to a power outlet then press the power button (3) to the on position.



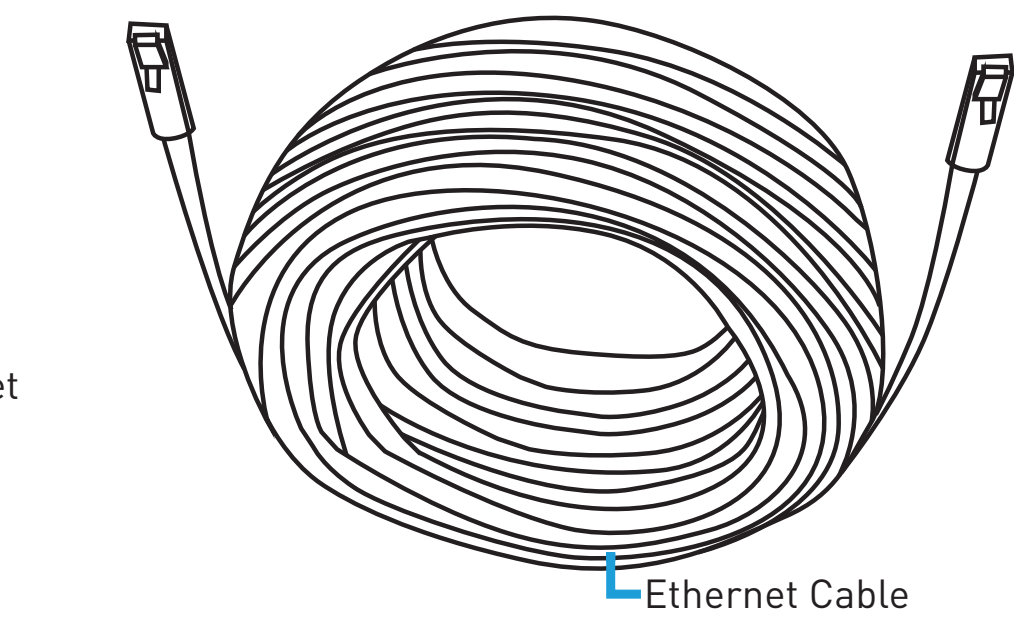
All connections have now been completed. You should see your NVR on the TV with the Startup Wizard displayed on-screen. Follow the "Startup Wizard Quick Start Guide" (the red coloured guide) to configure your NVR.





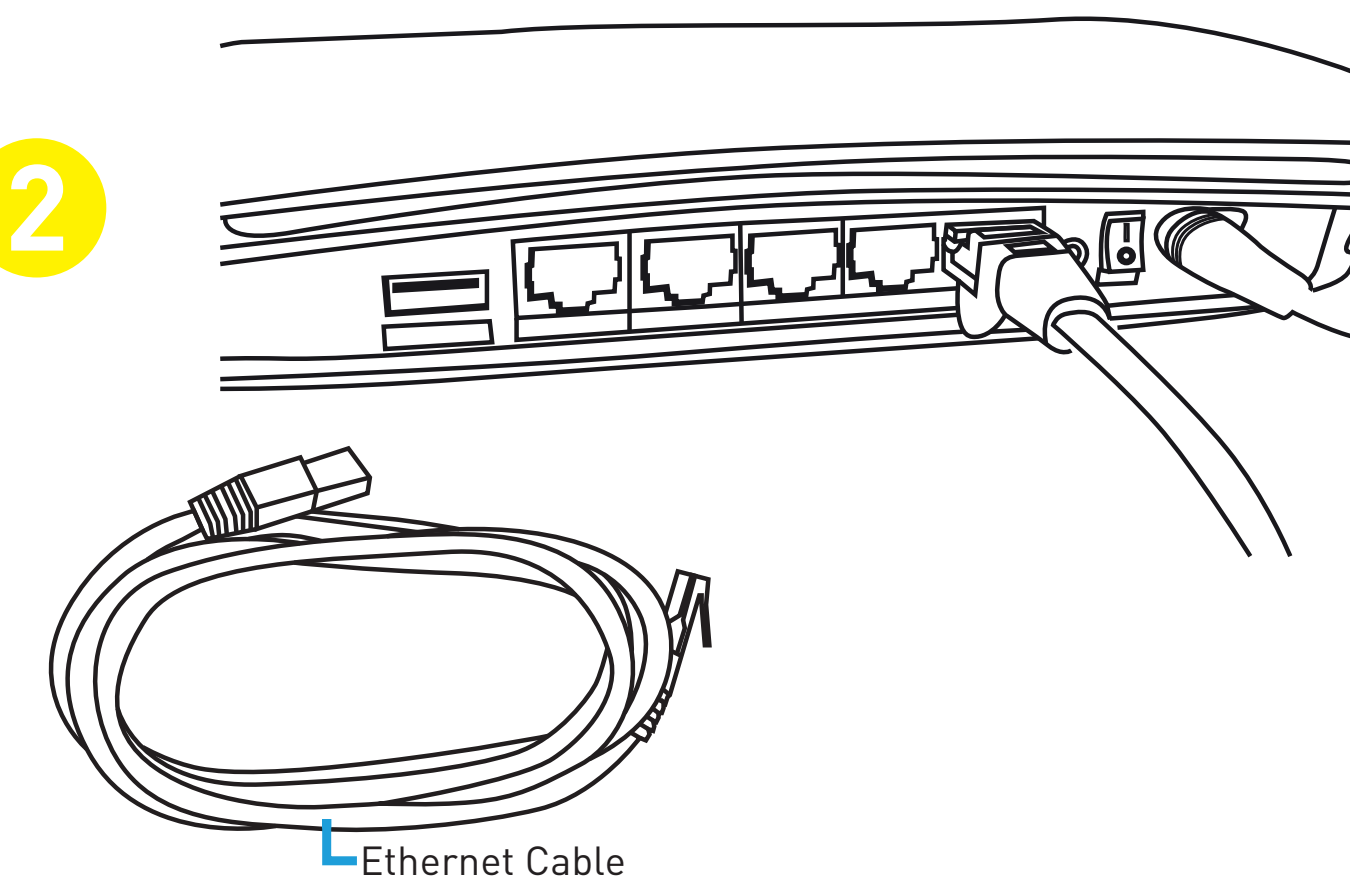
1

- Connect the supplied Ethernet cable to the Ethernet connection on the camera then plug the other end of the cable into one of the camera inputs.



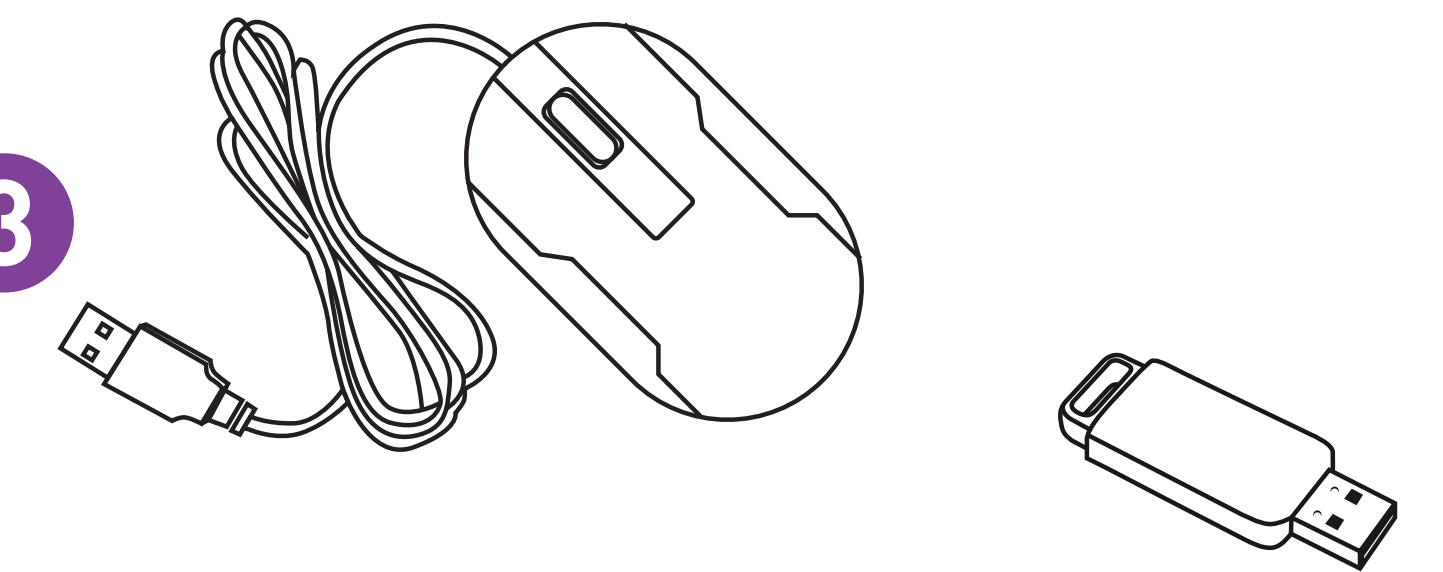
- 💡 The power connection on the camera is not required as your NVR will provide power to each camera connected.

2



- Connect the supplied Ethernet cable to the Ethernet port on your NVR then connect the other end to a spare port on your router. Don't proceed to the next step until this is done.

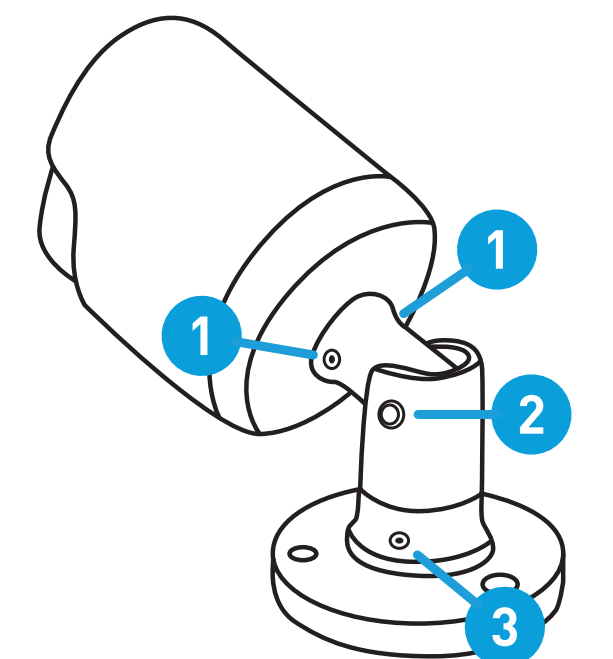
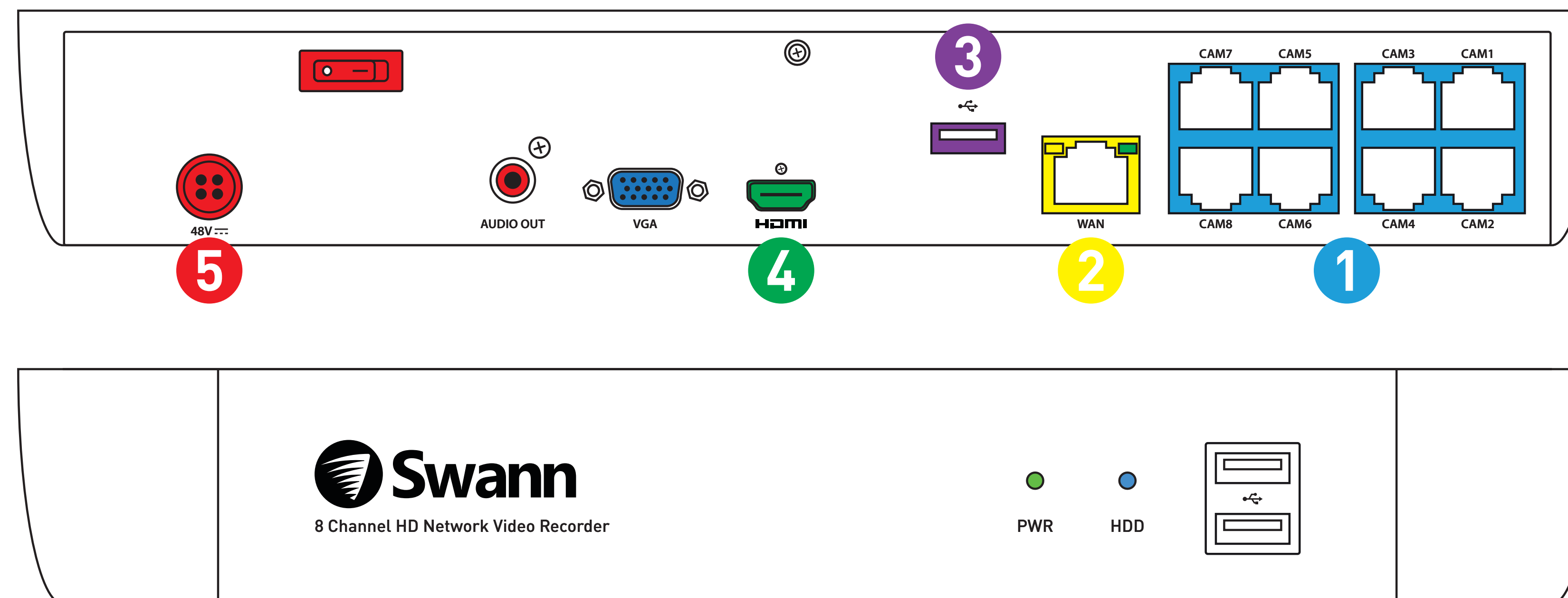
3



- Connect the supplied mouse to the USB port located at the rear.
- To copy recorded events and to perform a firmware upgrade, connect a storage device such as a USB flash drive (not included) to one of the front ports.

Your NVR is designed to ventilate air to keep it at an optimal temperature. Keep both sides of your NVR free from obstructions to allow it to ventilate.

- Connect the supplied HDMI cable to the HDMI port on your NVR then connect the other end to a spare HDMI input on your TV. The labels on the back of your TV indicate which input you need to select when your NVR is turned on.



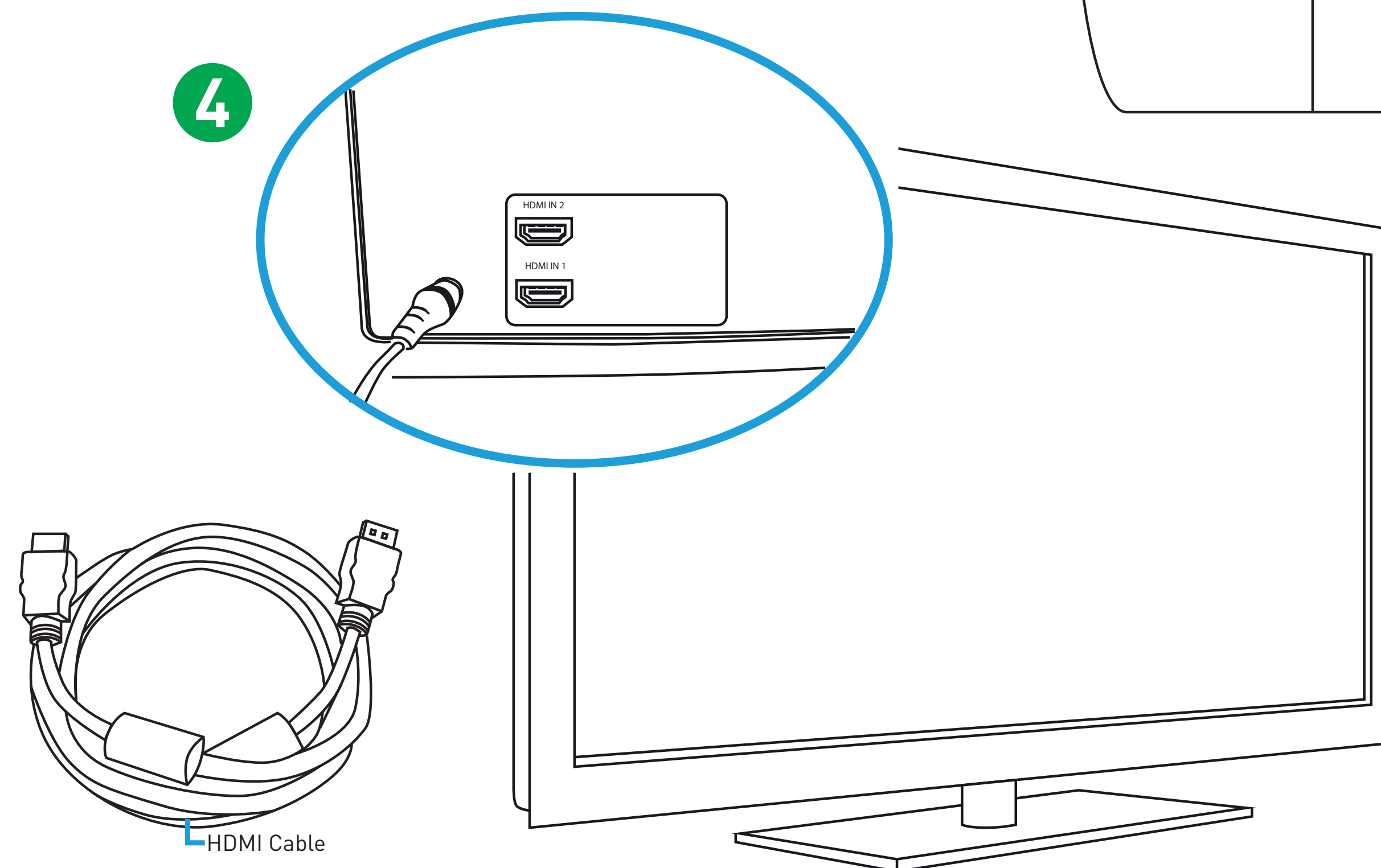
#### Positioning the bullet camera

To avoid damage, don't position the camera without loosening the screws first (use an Allen key).

- 1 This enables you to rotate the camera left or right.
- 2 This enables you to position the camera up or down.
- 3 This enables you to rotate the camera stand left or right.

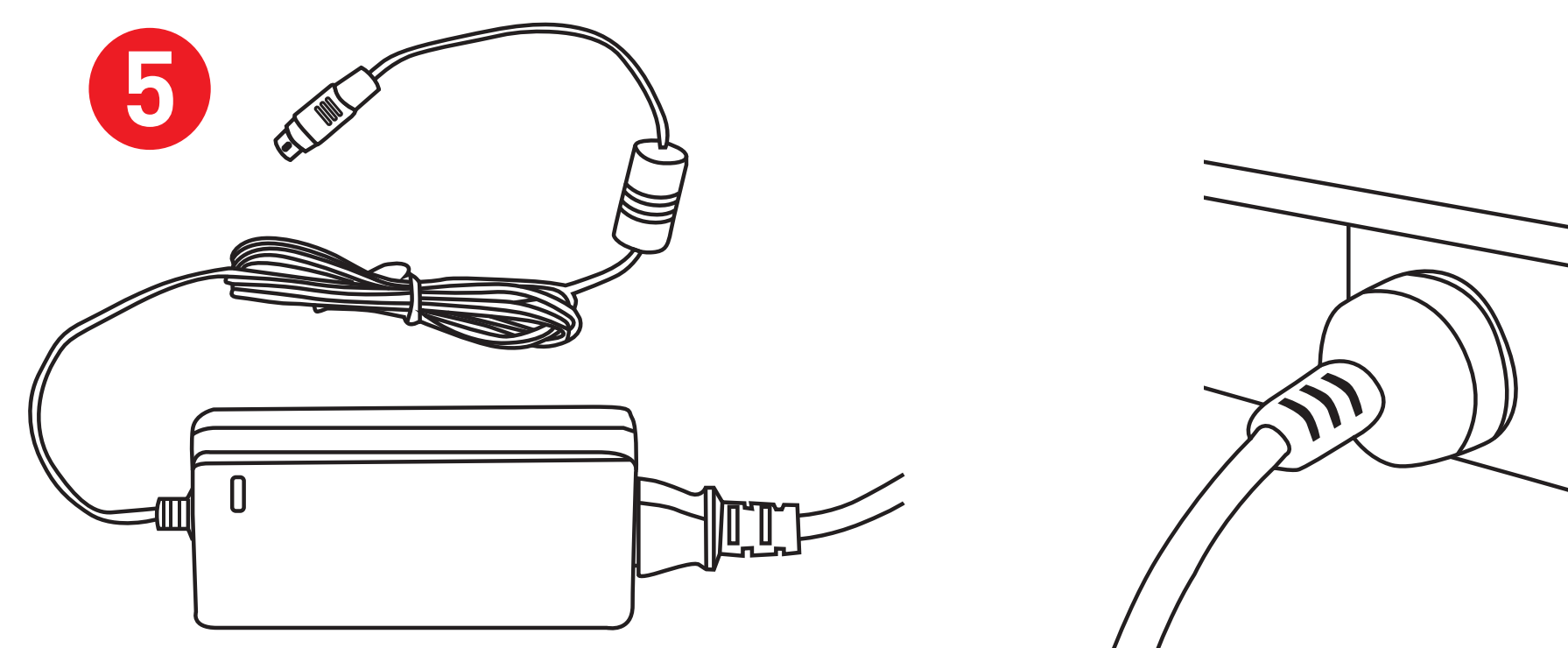
The camera can be mounted onto a flat surface using the screws and wall plugs provided. The surface must have sufficient to hold the camera

4



- 🔊 Press the A/V button on your TV's remote to select the HDMI input.

5



- Connect the supplied power adapter to the power input first then connect the supplied power cable to the other end of the power adapter. Connect the power cable to a power outlet then press the power button to the on position.

#### What are the additional connections for?

**Audio Output:** For connecting to a stereo or amplifier. This is not required when using the HDMI port.

**VGA Port:** Connect this to your monitor with a VGA input (VGA cable not supplied). This is not required when using the HDMI port.