

# 1803C



1803C Healing Waters

1803C is a versatile and robust examination table designed for medical professionals. It features a two-section fixed upholstered top for patient comfort and support. The adjustable head section, allows for precise positioning during examinations.



1803C Robust Brown



Two section fixed upholstered top



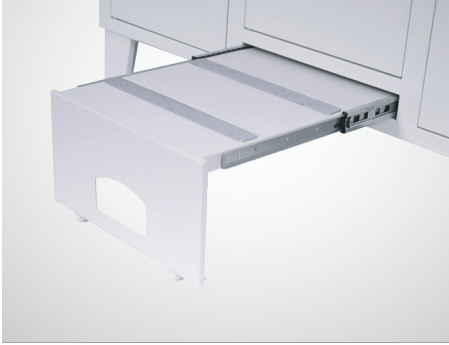
Head adjustable on gas spring



Three drawers in the upper section



Lower cabinet with two lockable side doors and a central section



Sliding step stool with grips



BP apparatus tray near the headrest

Accessory

01 Paper roll holder

Specifications

Safe Working Load: 170 kg
Patient Working Load: 135 kg
Overall approximate dimensions: 1900 mm x 560 mm x 840 mm, 75" x22" x 33" (L x W x H)
Overall width with BP tray: 945 mm, 37"
Overall width with step stool: 970 mm, 38"
Mattress platform size: 1900 mm x 565 mm, 75" x 22" (L x W)
Upper section of box: 1220 mm x 460 mm x 630 mm, 48" x 18" x 25" (L x W x H)
Size of sliding drawers: 320 mm x 440 mm x 75 mm, 13" x 17" x 3" (L x W x H)
Size of two side cabinets: 430 mm x 440mm x 430mm, 17" x 17" x 17" (L x W x H)
Size of centre cabinet: 350 mm x 430 mm x 370 mm, 14" x 17" x 15" (L x W x H)
Size of step stool: 415 mm L x 330 mm W x 205 mm H, 16" x 13" x 8" (L x W x H)
Size of BP tray: 350 mm x 120 mm X 20 mm, 14" x 5" x 0.1" (L x W x H)

Upholstery color



Healing Waters



Robust Brown

