






seca mBCA Alpha (545) seca TRU Alpha (452)

W-LAN-Configuration



Configure your
Wi-Fi connection
in just a few
steps

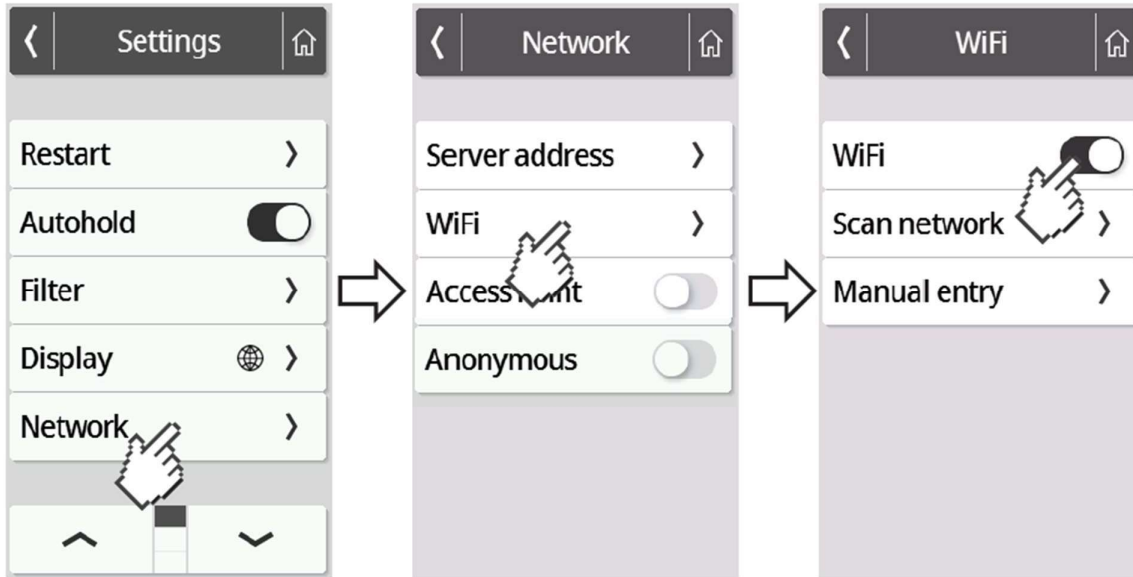


Configuring the Wi-Fi connection

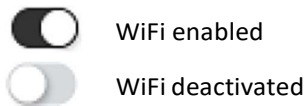
1. Make sure that there is no LAN cable connected to the device.
2. Make sure that TCP port 22020 is enabled for incoming and outgoing connections within your firewall.
3. Make sure that your seca device is powered by the supplied power supply.
4. Press the  button on the device display to access the device settings.
5. Use the  or  buttons to get to the "About" menu and call it up.
6. Use the  or keys  to access the "System Version" submenu.
7. The version number is displayed in green letters. This guide describes the WLAN configuration from firmware version 1.9.0 onwards. If the firmware version number is not displayed in green letters, please contact seca Service.



8. Use the  or buttons  to get to the "Network" menu and call it up.
9. Go to the "WiFi" menu.

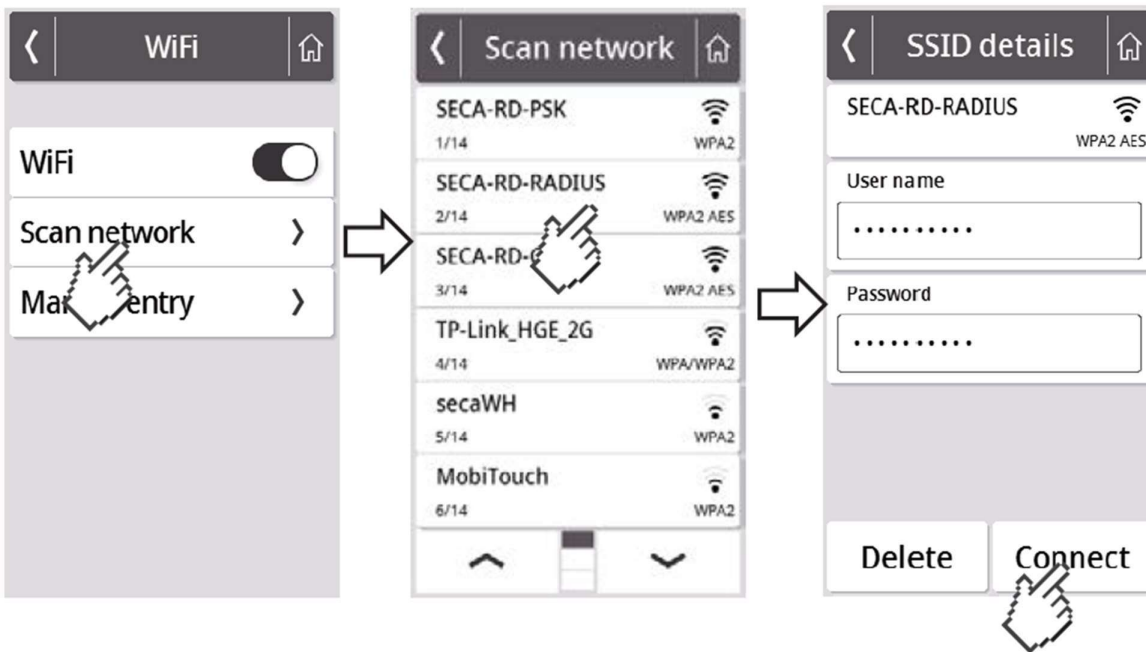


10. Activate the WiFi function.



11. Press the "Scan" menu.

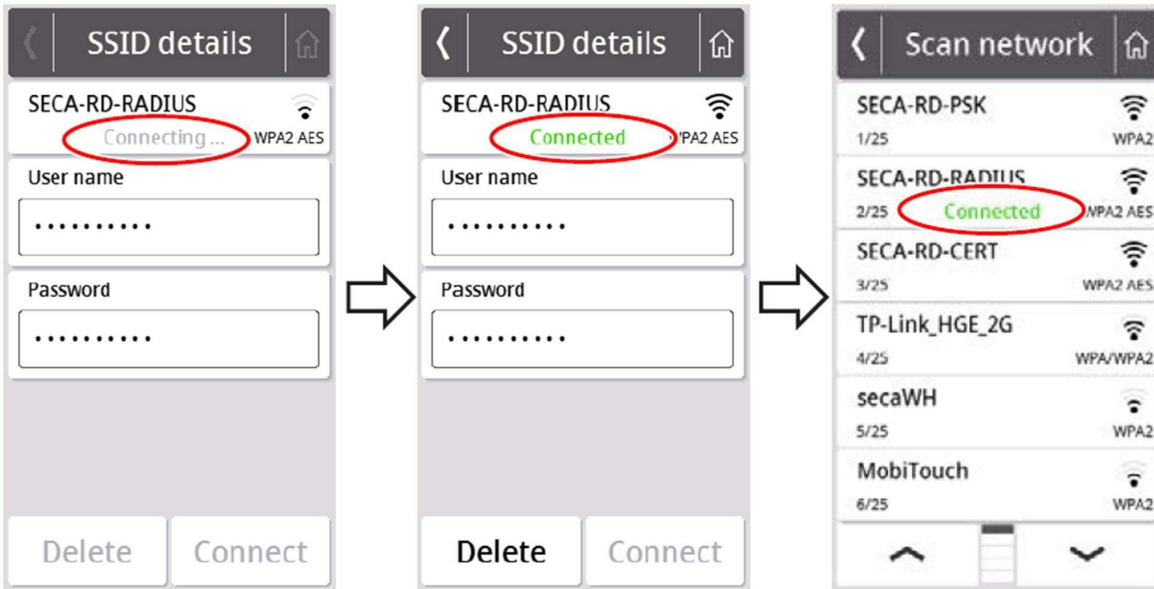
The device will now search for available WiFi networks. This may take a moment.



12. Select the network to which you want to connect the seca device. (Example here: SECA-RD-RADIUS with WPA2 AES encryption standard)

Attention: Only 2.4 GHz WiFi networks are supported.

13. Enter the username (if required) and password for the selected WiFi network. To do this, press into the respective text field. After successfully entering, press the "Connect" button.




The seca device now establishes a connection to the selected WiFi network. As soon as the connection is established, it will be indicated by the message "Connected" behind the selected network.

14. Press the  button to exit the menu.



The signal strength of the connected WiFi network is now displayed at the top of the display.

15. Go to the "Network" menu again (see steps 4 and 5). Then select "Server Address".
16. Enter the server name **gpx.secacloud.com** (**gpx.us.secacloud.com** for the US) of the seca cloud server. Confirm your entry with the  button.

