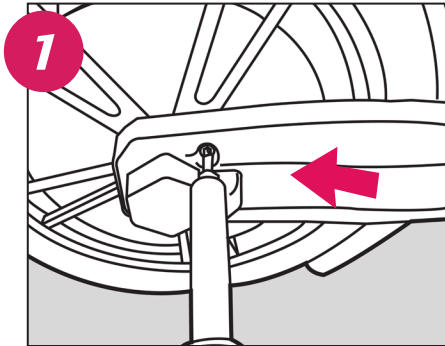
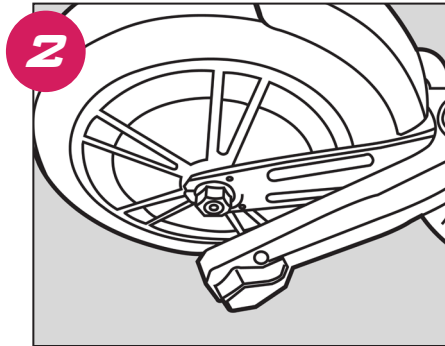


GO TRAX

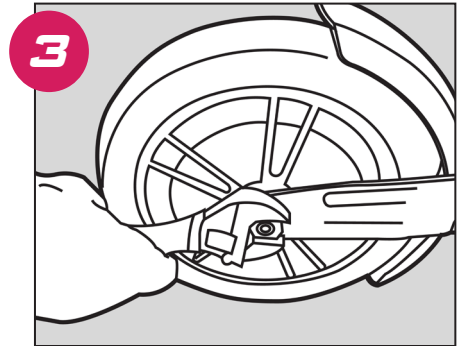
GXL/GXL V2 Motor Swap



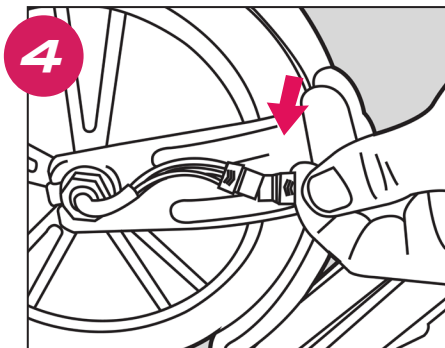
1 Remove the screws securing the fork covers from the forks. (Keep the screws in a safe place for later use.)



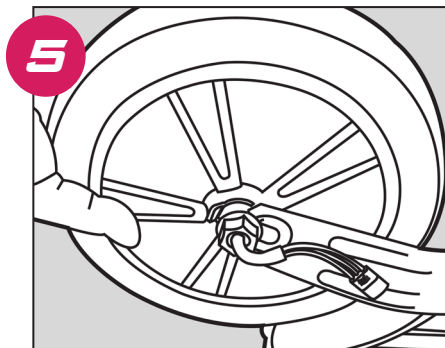
2 Lift the covers up to remove it off of the front forks.



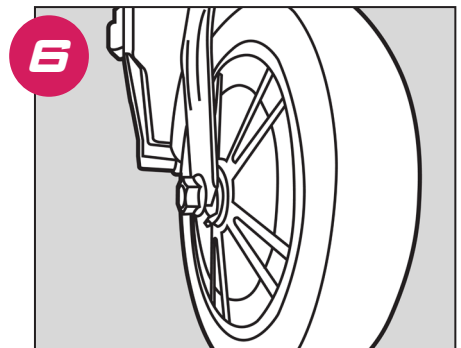
3 Using a crescent wrench or pair of pliers loosen the nut on each side of the forks.



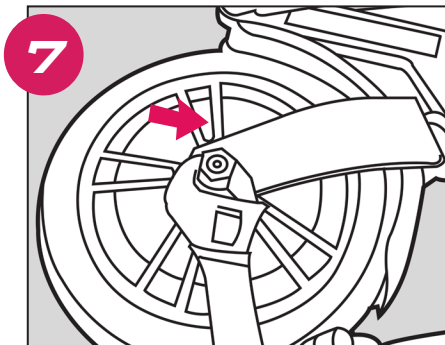
4 Ensure you have disconnected the motor adapter from the motor assembly before removing the motor from the front fork.



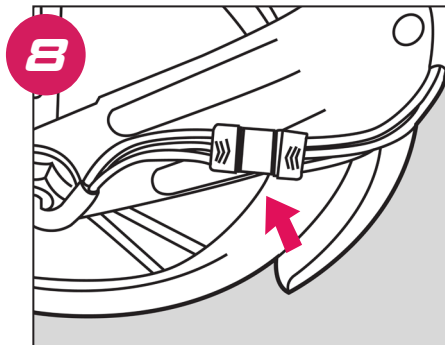
5 Once the nuts are loosened and the connector has been separated, simply slide the motor assembly down and out of the forks channel.



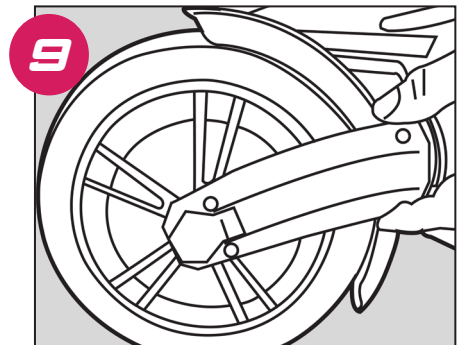
6 Slide the new motor assembly into the channel on the front forks. Ensure the tire and washers are in the proper position and the tread is facing the correct direction before proceeding. Washers should sit between motor housing and front fork.



7 Tighten the nuts on both sides of the forks.



8 Connect the connectors between the motor and motor adapter.



9 Slide the fork covers back onto the fork and reinstall the 8 screws.