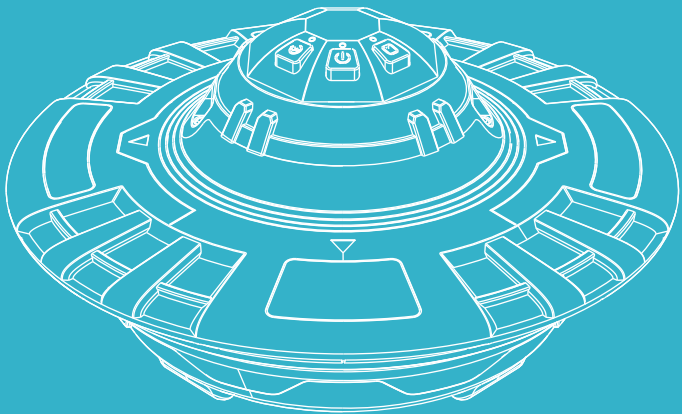


Hovara Pool Safety Alarm



Email: Servicehovara@outlook.com

Pool alarm Model : TP218

Smart Detection, Instant Protection
Because Every Second Counts

PS01

SAFETY

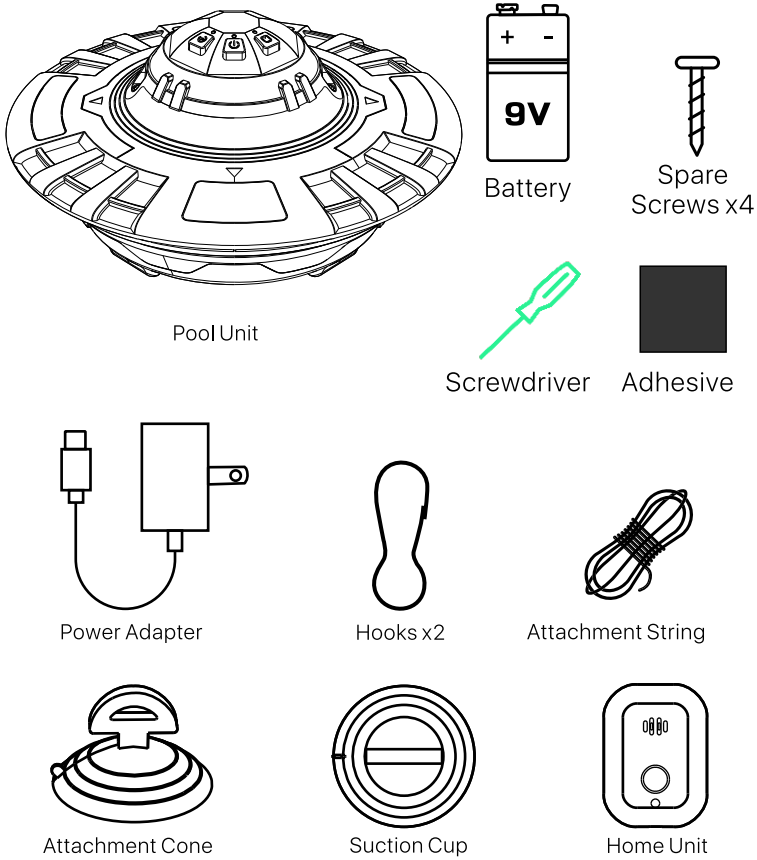
GENERAL SAFETY INSTRUCTIONS (Read this guide fully prior to use).

- This is exclusively a safety device and is not a lifesaving product.
- This device may contain small parts that may be a choking hazard to children under 3 years. Keep small parts away from children.
- This device is not a toy, do not allow children to operate or play with it because children could hurt themselves or others or damage the device.
- Without detracting from the aforementioned, your attention is drawn to the fact that the product may not sound a warning in cases of gradual entry into the pool.
- Ensure that the system covers the entire area of the pool and if necessary, adjust the sensitivity of the system.
- Do not leave objects in the pool when the system is activated.
- Opening the home and pool unit for service or maintenance must be done by qualified service personnel only, with the exception of opening the pool unit battery compartment to replace the batteries.
- Used electrical and electronic products should not be mixed with general household waste.

Important: This device is not intended to replace any other safety consideration; that is, adult supervision, lifeguards, fences, gates, pool covers, locks, and so forth, and some devices may not detect gradual entry.

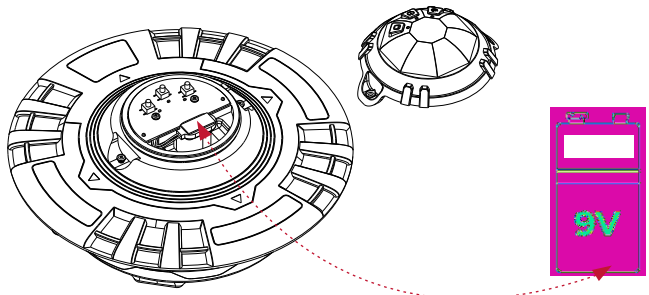
OPENING THE BOX

Alarm system package contains the following:

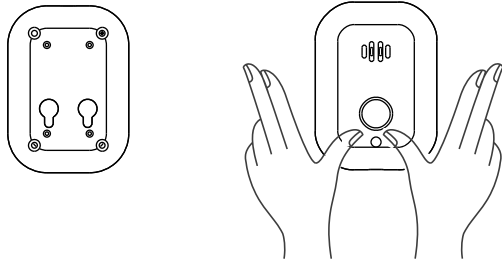


PRODUCT START-UP INSTRUCTIONS

1. When you use it for the first time, use a screwdriver to twist off the top battery cover screw, put in the 9V battery, and then cover the battery cover.
2. Press the center on button of the alarm, press the left button again the pool unit and home unit will be connected automatically. Press the left button of the alarm, the product will work normally only after 30 seconds, at this time, you can put the alarm into the pool and wait for the work.



There are hanging holes on the back of the home unit, so you can hang it on top of a wall hook or nail to secure it. If there are no hooks on the wall, you can choose to fix it with stick-on tape.



FUNCTION INSTRUCTION



Smart Delay Start

- Press button → 30s delay starts
- Toss into pool (no alarms during placement)
- **Alarm & Silence**
- Triggered alarm: Red flashing light single press → silence
- Auto-resets to normal monitoring after pause
- **Auto-Reset:**
- After 30 seconds, alarm reactivates for new triggers.

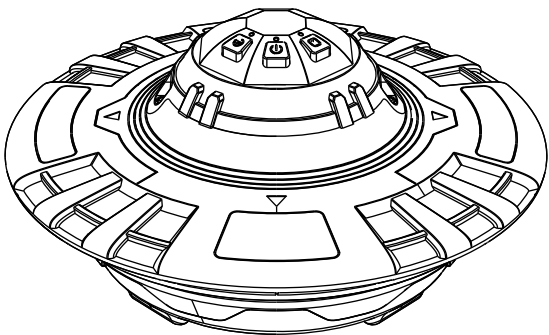


Turn On (Short Press):

- Press the middle button once.
- Green light turns on for 10 seconds, then goes off.
- Alarm is now active.

Turn Off (Long Press):

- Press & hold the middle button for 3 seconds. Green light flashes 3 times, then turns off.
- Alarm is now disabled.



Swim Mode

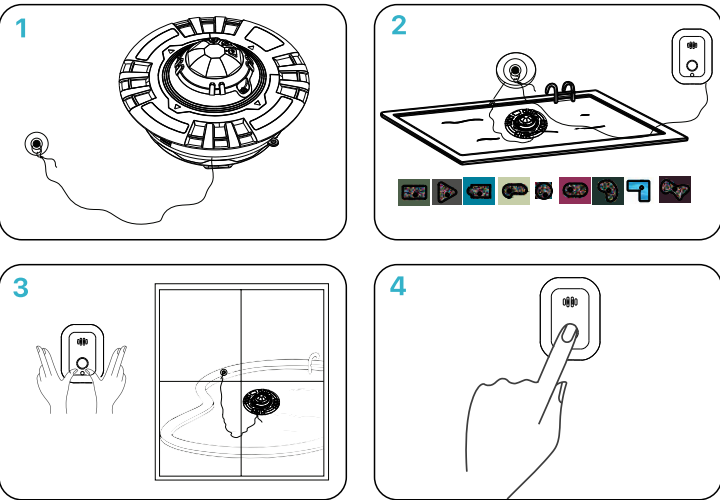
Activate Swimming Mode:

- While powered on, press the right button once.
- Alarm is temporarily disabled (no alerts triggered).

Automatic Reactivation:

- After leaving the pool, if water stays calm for 10 minutes, the alarm automatically resets to normal mode.

OPERATION INSTRUCTION



1. Using the provided kit, tie the string to the pool unit.
2. Place the pool unit in the pool away from the pump outlet. Remember to install the 9V battery in the pool unit.
3. Install the home unit high up on a wall in dry place that is as close to the pool as possible.
4. Press the center on button of the pool unit, then press the button on the left side of the pool equipment, the pool unit and home unit will be connected automatically. Remember to connect the charging plug to the home unit.

ALARM PLACEMENT

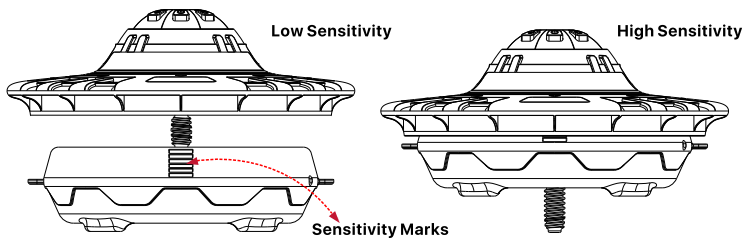
One pool alarm can be used for all pool types. This includes above ground, in-ground, inflatable and soft side pools. Use the placement suggestions in figure to determine the best placement for your pool shape.

SENSITIVITY ADJUST

Turning the flotation base clockwise or counterclockwise raises or lowers the sensing ring with respect to the water. The closer the sensing ring is to the water, the more sensitive the alarm.
Turn the flotation base gently clockwise until it stops.
Note: Sensitivity is preset for optimal performance — do not adjust unless directed by support.

Sensitivity Marks

The "Sensitivity Marks" can be used as a general indicator for the sensitivity position. Should the sensitivity need to be adjusted start making adjustments by turning the float only a ¼ turn at a time. Test the alarm after each adjustment. We do not recommend turning the float out more than three full turns.



TROUBLESHOOTING

Pool alarm will not work.

Low or missing battery. Replace battery with a new 9V alkaline.

Pool alarm makes a chirp sound occasionally.

The battery voltage may be low. Replace battery with a new 9V alkaline.

Pool alarm was working and is now it is not.

Oxidation can build up on the sensing post. Lightly clean with steel wool.

Pool alarm gives false alarms.

Check that the alarm is not near the filter or pump. Be sure the filter inlet is pointed downward.

The LED on the receiver does not light.

Be sure wall transformer is plugged into a 110VAC outlet and the power jack is plugged into the receiver. Check that the ON/OFF switch is ON.

DAILY MAINTENANCE

1.Cleaning

For optimal performance, clean your pool alarm monthly (or after heavy use) by: Removing it from water and rinsing thoroughly with fresh water
Gently wiping all surfaces with a soft, non-abrasive cloth
Ensuring complete drying before reactivation

2. Maintenance

Battery Replacement

Annually replace the 6LR61 battery when the low-battery indicator flashes
Always use high-quality lithium batteries for optimal performance

Function Testing

Conduct weekly tests by dropping the included 5lb weight near the sensor to verify proper alarm activation After severe weather events, inspect and clear any debris that may obstruct the sensor

Preventative Care

Keep the sensor surface clean from mineral deposits
Store spare batteries in a dry, temperature-controlled environment

3. Storage

For proper off-season storage, remove batteries, rinse and dry all components thoroughly, then store in the original packaging in a dry location maintaining temperatures between 14°F and 122°F (-10°C to 50°C) to ensure optimal performance when reused.

4.Warranty Terms

This product includes a 1-year limited warranty covering manufacturing defects. The warranty becomes void if: the unit is opened/tampered with, submerged beyond its rated depth, or used with non-approved batteries. Always use manufacturer-recommended 6LR61 batteries to maintain warranty coverage.

USAGE TIPS

For optimal performance, place the floating alarm sensor in the center of your rectangular pool to ensure 360° detection coverage and equal sensitivity to all edges.

Recommended Placement:

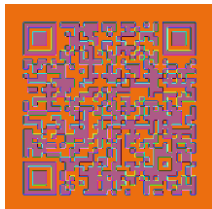
Center of Pool (ideal for most rectangular pools)
Maximizes 360° detection range
Equal sensitivity to all pool edges
Avoids "dead zones" near ladders/steps

Alternative Positions:

1/3 from either end (for large pools >40ft)
Never place directly against pool edge/wall (reduces sensitivity by 50%+)

Special Cases:

Freeform Pools: Position near widest section
Above-Ground Pools: Center placement is critical (smaller water area)
Multi-Alarm Setup: Place units at opposite ends (for pools >20'x40')



Looking for How-To Videos?
Scan it!

IF YOU HAVE ANY QUESTIONS OR ISSUES WITH THE PRODUCT, PLEASE DON'T HESITATE TO REACH OUT TO US.

FCC WARNING

This equipment has been tested and found to comply with the limits for a Class B digital device, pursuant to part 15 of the FCC Rules. These limits are designed to provide reasonable protection against harmful interference in a residential installation. This equipment generates, uses and can radiate radio frequency energy and, if not installed and used in accordance with the instructions, may cause harmful interference to radio communications. However, there is no guarantee that interference will not occur in a particular installation. If this equipment does cause harmful interference to radio or television reception, which can be determined by turning the equipment off and on, the user is encouraged to try to correct the interference by one or more of the following measures:

- Reorient or relocate the receiving antenna.
- Increase the separation between the equipment and receiver.
- Connect the equipment into an outlet on a circuit different from that to which the receiver is connected.
- Consult the dealer or an experienced radio/TV technician for help.

To assure continued compliance, any changes or modifications not expressly approved by the party. Responsible for compliance could void the user's authority to operate this equipment. (Example- use only shielded interface cables when connecting to computer or peripheral devices).

Caution: Any changes or modifications to this device not explicitly approved by manufacturer could void your authority to operate this equipment.

This equipment complies with part 15 of the FCC Rules. Operation is subject to the following two conditions:
(1) This device may not cause harmful interference, and
(2) this device must accept any Interference received, including interference that may cause undesired operation.

This equipment complies with FCC radiation exposure limits set forth for an uncontrolled environment. This equipment should be installed and operated with minimum distance 20cm between the radiator and your body.