

TERRATEK

550W Spray Gun

TTPS550

User Manual

Please read and
retain for future
reference



www.futura-direct.co.uk

Search for
***futura*direct**
on You**Tube**

**For in-depth
user guides &
tutorials**

Follow Us @:





550W Spray Gun TTPS550

Thank you for purchasing our 550W Spray Gun which has been designed to give many years of service under normal use. In order to get the most from your 550W Spray Gun please carefully read and follow the instruction provided.

CONTENTS

Parts List

Technical Information

Safety Instructions

Using your Tool

Maintenance

Warranty

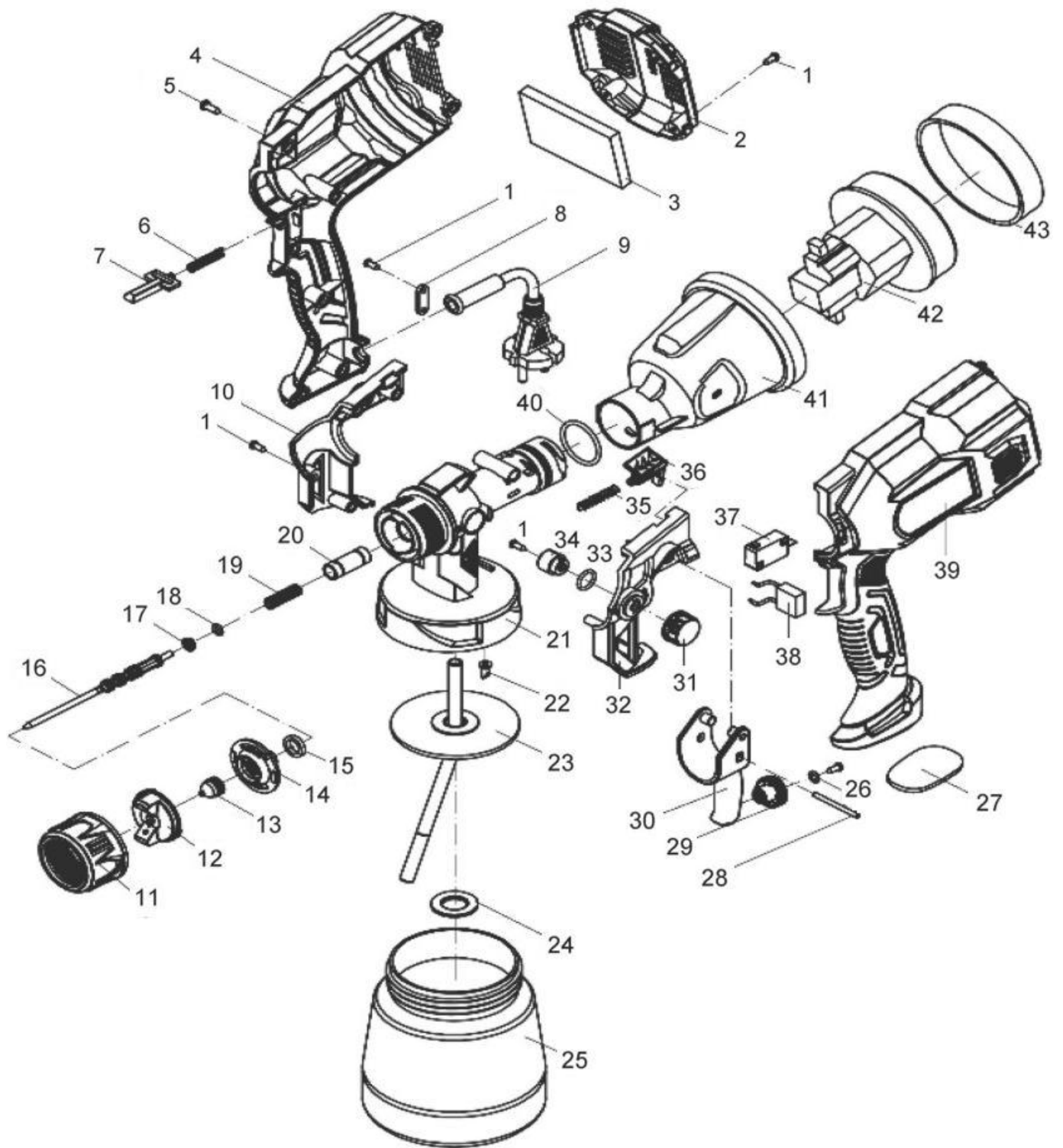
PART LIST

No.	Description	No.	Description
1	Screw	23	Pipette Set
2	Rear Cover	24	Suction Pipe Splint
3	Cotton Filter	25	Cup
4	Right Cover	26	Flat Gasket
5	Screw	27	Foot Pad
6	Switch Plunger Spring	28	Short Pin
7	Switch Plunger	29	Adjusting Knob
8	Tension Disc	30	Trigger
9	Cable	31	Spray Knob
10	Right Side Cover	32	Left Side Cover
11	Big Nut	33	O-ring
12	Spray Ball	34	Atomization Circle
13	Spray Nozzle	35	Vent Spring
14	Barge Board	36	Lock Catch
15	Nozzle Seal	37	Micro Switch
16	Needle	38	Capacitance
17	Bowl Seal	39	Left Cover
18	O-ring	40	Gun-ring
19	Needle Spring	41	Motor Cover
20	Needle Set	42	Motor
21	Gun	43	Damping Ring
22	Air Valve		

TERRATEK

550W Spray Gun TTPS550

Exploded Assembly Diagram



NOTICE: Actual product may vary from pictures shown.



550W Spray Gun TTPS550

TECHNICAL INFORMATION

Electric Spray Gun

Model: TTPS550

Voltage: 230-240 V~

Frequency: 50 Hz

Power input: 550 W

Flexile Hose Length: 1.5 m

Maximum Viscosity: 130 DIN/secs

Container capacity: 800 ml

Net Weight: 2.3 kg

L_{PA} (Sound pressure level) 74 dB(A)

L_{WA} (Sound power level) 87 dB(A)

Uncertainty K_{PA} : 2.5 dB(A) and K_{WA} : 2.5 dB(A)

Vibration $<2.5 \text{ m/s}^2$

Uncertainty $K=1.5 \text{ m/s}^2$



Protection category II

Check the machine, loose parts and accessories for transport damage.

Vibration level

The vibration emission level stated in this instruction manual has been measured in accordance with a standardized test given in EN 60745; it may be used to compare one tool with another and as a preliminary assessment of exposure to vibration when using the tool for the applications mentioned

- using the tool for different applications, or with different or poorly maintained accessories, may significantly increase the exposure level.
- the times when the tool is switched off or when it is running but not actually doing the job, may significantly reduce the exposure level.

Warning: Protect yourself against the effects of vibration by maintaining the tool and its accessories, keeping your hands warm, and organizing your work patterns.



Read this entire manual before using this product. Failure to do so can result in serious injury. Save this manual for future reference.

Copyright©2018 by FUTURA Direct Ltd. All rights reserved. This manual or any artwork contained herein must not be reproduced in any shape or form without the express written consent of FUTURA Direct Ltd. Diagrams within this manual may not be drawn proportionally. Due to continuing improvements, actual product may differ slightly from the product described herein.



550W Spray Gun TTPS550

SAFETY INSTRUCTIONS

Read and Keep This Manual

Please read carefully all instructions within this manual. Failure to follow all safety warnings can result in serious personal injury. The term “Power Tool” in all of the following warnings refers to your mains operated (corded) or battery operated (cordless) power tool.

Important Safety Information



This symbol is to warn you of potential personal injury hazards. Please read carefully the notes alongside this warning to avoid possible injury or death.

General Safety Rules



WARNING! Read all instructions. Failure to follow all instructions listed below may result in electric shock, fire and/or serious injury. The term “power tool” in all of the warnings listed refers to corded or cordless power tools.

Work area safety

Keep work area clean and well lit. ***Cluttered or dark areas invite accidents.***

Do not operate power tools in explosive atmospheres, such as in the presence of flammable liquids, gases or dust. *Power tools create sparks which may ignite the dust or fumes.*

Keep children and bystanders away while operating a power tool. *Distractions can cause you to lose control.*

Electrical safety

Before use, ensure that the power outlet you are using matches the plug on your spray gun and that the voltage of the outlet matches that of your spray gun.

Only use grounded extension cable with spray gun fitted with proper plugs and if using outdoors ensure any extension cable is suitable for outdoor use.

Always try to avoid body contact with grounded surfaces, such as radiators, cooking ranges and any other fixed appliance with metal surfaces.

Do not expose your spray gun to wet or damp conditions and NEVER use in rain.

Check regularly the power cable of your machine and any extension cable that you are using for damage.

Do not carry or pull the machine with the power cable.

Ensure the power cable is clear from hot surfaces, oil or sharp objects.

Personal safety

Never use your spraygun whilst under the influence of alcohol, drugs or medication.

Tiredness can often cause accidents, stay alert.

Never use your spraygun without the correct guards in place.

Always use approved eye protection and dust mask. Non slip safety shoes and hearing protectors should be worn at all times when using your spraygun.



550W Spray Gun TTPS550

Ensure any dust collecting device supplied with your spraygun is connected correctly before use.

Ensure all loose clothing, long hair or jewelry is kept clear of the spraygun.

Before plugging your spraygun into the power outlet ensure the spraygun is in the OFF position.

Check that wrenches or adjusting keys have been removed. Any wrench or key left attached to a moving part can result in injury.

Power tool use and care

Keep your spraygun clean and well serviced at all times.

Never adjust or service any spraygun before disconnecting from the mains electricity supply.

Always use the correct tool for the job.

Never force the tool to work harder than it is designed to do.

Never use your power tool with broken parts such as switches, guide fences or leg stands.

ALWAYS keep your spraygun away from children.

Only have your power tool serviced by a qualified repair agent using manufacturers recommended parts.

WARNING: For your own safety read Instruction Manual before operating your tool.

Read this owner's manual completely and make sure you understand all of its safety guidelines.

1. When using sprayguns basic safety precautions should always be followed to reduce the risk of fire, electric shock and personal injury.
2. Read all these instructions before attempting to operate this product and save these instructions.
3. Always check that the mains voltage corresponds to the voltage on the rating plate.
4. Your machine is double insulated; therefore no earthwire (ground) is required.
5. Immediately throw away old and damaged cables or plugs when they have been replaced by new ones. It is dangerous to insert the plug of a loose cable in the wall outlet.
6. Only use an approved extension cable suitable for the power input of the machine. The minimum conductor size is 1.5mm. When using a cable reel always unwind the reel completely.

Additional safety instructions for spray gun

1. Never aim the nozzle at another person or animal. Never allow the spray to come into direct contact with the skin.
2. This spray gun must not be used for spraying flammable paints and solvents with a flash point of less than 55 °C
3. Always make sure that there is adequate ventilation in the work area when spraying.
4. Always keep the spray basket nozzle in place during use.
5. Do not use spray guns where there is a risk of fire or explosion.
6. Beware of any Hazard by the material being sprayed and consult the markings on the container or the information supplied by the manufacturer.
7. Do not spray any material where the hazard is not known.
8. Always use appropriate eye protection to keep hazardous vapors or fumes out of the eyes.
9. Never operate a spray gun without wearing a face mask.



550W Spray Gun TTPS550

10. Wear ear protection if the sound pressure exceeds 85 dB(A).
11. Keep your spray gun, paint container and nozzles clean. Do not clean with flammable liquids with a flash point less than 55 °C. Inspect the mains lead periodically and if damaged have it replaced by a qualified person.
12. Never spray near a naked flame or appliance pilot flame.
13. Never smoke whilst spraying.
14. Always read the paint manufacturers thinning recommendations or instructions before using paint or other materials.
15. Always disconnect from the mains supply when filling the paint container or cleaning the spray gun.
16. Avoid running the unit with the flow rate knob fully closed for any length of time.
17. Immediately switch off the spray gun when:
 - 1) Interruption in the mains plug, mains cable or mains cable damage.
 - 2) Faulty or defect switch.
 - 3) Smoke or stench of scorched insulation.

Only use qualified repair agents to service this power tool.

Only use qualified electrician to repair any damaged wiring.

NEVER remove the grounding prong from the power tool or extension cord.

Power Extension Cables

When using any extension cable the machine will suffer a power reduction due to the drop in voltage caused by the length of the cable. This can be partially offset by selecting extension cables with lower gauge wire.

Check all extension cables for damage before use.

Avoid sharp objects.

Do not position the cable where it could be subject to traffic passing over it.

Symbols

IMPORTANT: Some of the following symbols may be used on your tool.

V.....Volts

A.....Amperes

Hz.....Hertz

~.....Alternating current

.../m.....Revolutions per minute

Class II construction (double insulated)

Kg.....Kilograms

n_0No load speed

CEConforms to European safety standards

DCDirect Current

Unpacking



550W Spray Gun TTPS550

Carefully remove the product and any accessories from the box. Make sure that all items listed in the packing list are included.

Packing List

- A) 1 x Viscosity measuring cup
- B) 1 x Spray gun
- C) 1 x Manual

USING YOUR TOOL

Warning: Before using the tool, read the instruction book carefully.

Selecting Paint

- The spray gun unit can be used with a wide variety of paints, stains and coatings such as deck and fence stains, latex, sealers, varnishes, wood preservatives, enamels, oil and water based paints and automotive paints.
- However, there are some materials that cannot be sprayed so please check manufacturers' recommendation before buying the paint or other material. If the instructions refer to brush application only, then the material probably cannot be sprayed.

Warning: This unit cannot be used for textured paints. Use of these materials will cause premature wear, which will void your warranty. To obtain the best results, please read the instructions carefully.

Hazardous vapors:

Paints, solvents, insecticides, and other materials can be harmful if inhaled or come in contact with the body. Vapors can cause severe nausea, fainting, or poisoning.

Prevention:

- Use a respirator or mask. Read all instructions supplied with the mask to be sure it will provide the necessary protection.
- Wear protective eyewear.
- Wear protective clothing as required by coating manufacturer.

Material Preparation

- **Viscosity** is a technical term used to indicate if a liquid is thin or thick. Having the correct viscosity of paint is important to ensure the paint atomizes correctly and sprays well giving you a good quality finish. If your material is thin like water then the viscosity is said to be low, while if thick like latex interior paint, then viscosity is said to be high.
- You should always test the viscosity (or thickness) of paint before spraying to see if thinning is required. The correct viscosity is not too high or too low and it is important to ensure the paint atomizes correctly and sprays evenly.



550W Spray Gun TTPS550

Before spraying, the material being used may need to be thinned with the proper solvent as specified by the material manufacturer. Follow the instructions below.

1. Stir the paint or other spraying material thoroughly before measuring the viscosity.
2. Dip the viscosity cup completely into the spraying material.
3. Hold the cup up and measure (in seconds) the time it takes to empty the liquid out of the cup. This time is referred to below as **RUN OUT TIME**. If the **RUN OUT TIME** is higher than indicated on the table on **below section**, refer to the instructions in the **THINNING** section on next **chart**.

Thinning Chart

No.	Material	Run out Time (Sec)
1	Oil enamel	25 - 60
2	Oil based primer	30- 60
3	Oil stain	No thinning required
4	Clear sealer	No thinning required
5	Polyurethane	No thinning required
6	Varnish	20- 60
7	Lacquer sanding sealer	25-35
8	Lacquer	25-35
9	Automotive finishes	20-40
10	Latex	45- 90

Material to be sprayed should always be strained to remove any impurities which may enter and clog the system. Impurities in the paint or other material will result in poor performance and a poor finish.

Thinning(Fig. 1)

Paint is "thinned" by adding the substance upon which the paint is based. If it is water-based paint then water is added; if oil based then mineral spirit or manufacturer's recommended thinner is added. If the paint requires thinning, start with a 10% dilution of the paint. To do this, partially fill a container with one quart (0.94 liter) of paint. The viscosity cup supplied with the unit holds 1/10 of a quart. Block the hole in the viscosity cup with your finger and fill up with the required thinner. Add the thinner to the paint and stir, and re-measure the viscosity. If the paint requires additional thinning, repeat this step by adding 5% (5% will be equal to half a viscosity cup) with the required thinner until desired viscosity is achieved.

If mixing larger batches of paint, a gallon (4.54liters), for instance, then add four viscosity cups of appropriate thinner which is approximately 10% of a gallon (4.54liters). If further thinning is required repeat by adding two viscosity cups (approximately 5% of a gallon) until desired viscosity is achieved.

Always follow the manufacturer's guide for thinning in conjunction with a spray gun. If in doubt please contact the paint manufacturer.

Surface & Job Preparation

- With any job, you should always ensure that you have prepared your surface to get the best finish. You must ensure all surfaces are free from dust, dirt, rust and grease. Lightly pressure wash decks or exterior surfaces and ensure they are dry before painting.
- With pre-coated or pre-painted surfaces lightly rub down with sandpaper to ensure a good bond for the paint. With bare wood surfaces wipe a wet rag to ensure the surface is free of dust.
- Because some paints, lacquers, stains and other sprayable materials contain particles that are not fully dissolved, we recommend that you strain your material through either a funnel with a built-in filter, a paint strainer or through hosiery when filling the paint container. This will ensure that no large particles enter the paint container, preventing blockages and providing you with trouble-free spraying.
- Even though the Paint Zoom™ system has very little over-spray it is recommended that you mask the edges and other areas and use a drop cloth to ensure that you protect those areas you wish to remain untouched.

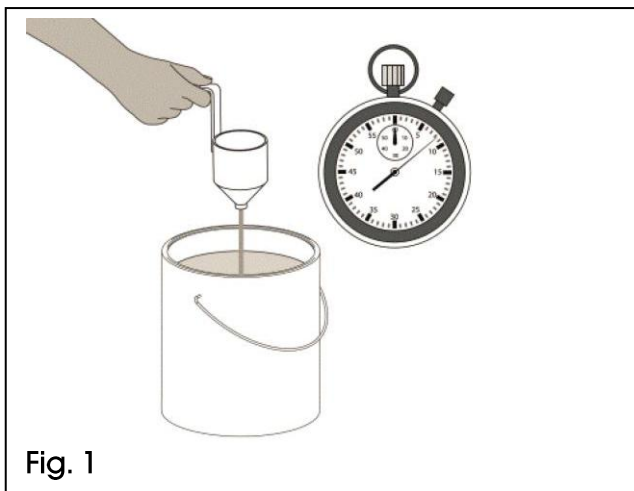


Fig. 1

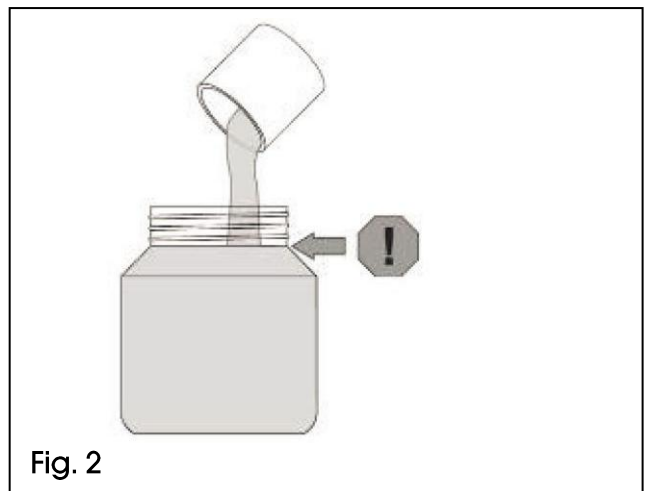


Fig. 2

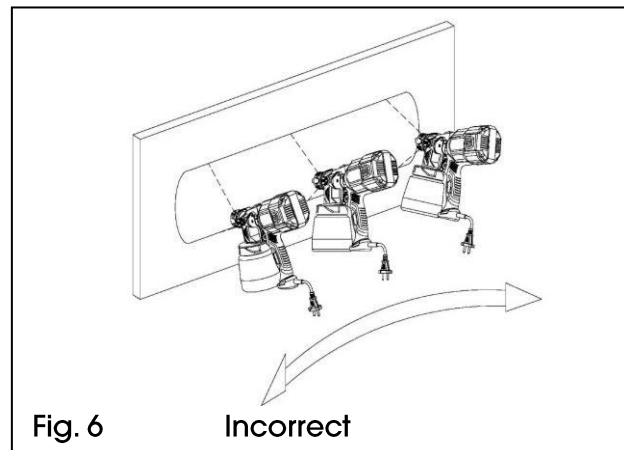
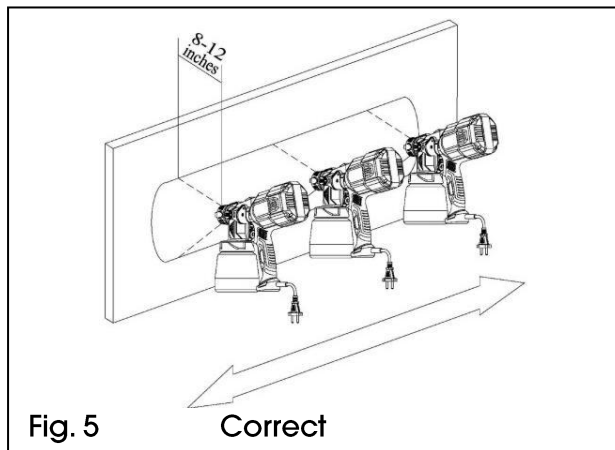
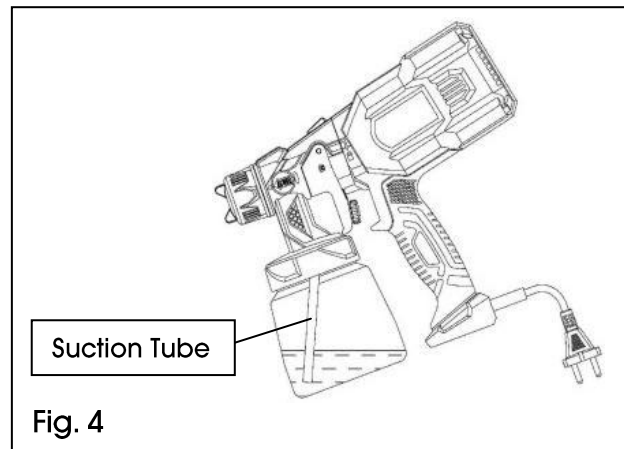
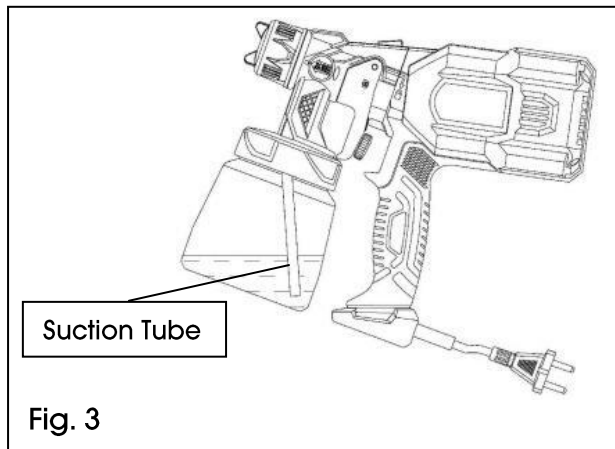
Filling the paint container(Fig. 2)

1. Unscrew the paint container from the spray gun.
2. After the material has been properly thinned and strained, fill the container to the top of the neck.**DO NOT OVERFILL** above the start of the threaded neck.
3. Push the pick-up tube firmly into the base of the gun body. Carefully screw the cup back onto the spray gun.

Adjust the Suction Tube (Fig. 3, 4)

1. If spray in an upward direction, the angled end of the suction tube should be pointing toward the rear of the gun.

- If spray in a downward direction, the angled end of the suction tube should be pointing toward the front of the gun.



An airtight seal is essential for the correct operation of this spray gun. Before operating the unit, please ensure that the paint container is securely fixed to the spray gun body and the gasket is in place.

How to Spray Correctly(Fig. 5, 6)

WARNING!

NEVER press the trigger of the gun while adjusting the ears on the spray pattern adjuster.
NEVER point the spray gun at yourself or any other person.

- Set the material volume by turning the regulator on the rear part of the spray gun.
- Position the spray gun perpendicular to and approximately 20 to 30cm from the spray surface, depending upon the spray pattern size desired.
- Spray parallel to the surface with smooth passes at a consistent speed as illustrated below. This will help avoid irregularities in the finish (i.e. runs and sags).
- Always apply a thin coat of material on the first pass and allow to dry before applying a



550W Spray Gun TTPS550

second, slightly heavier coat.

Even coat throughout

Correct: Keep stroke smooth and at an even speed.

- The best results occur when making 50cm passes. Always keep the gun pointed squarely at the spray surface and overlap passes slightly to obtain the most consistent and professional finish possible.

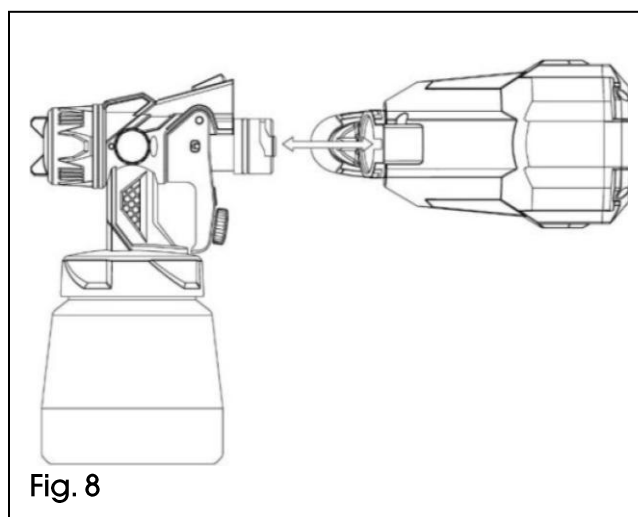
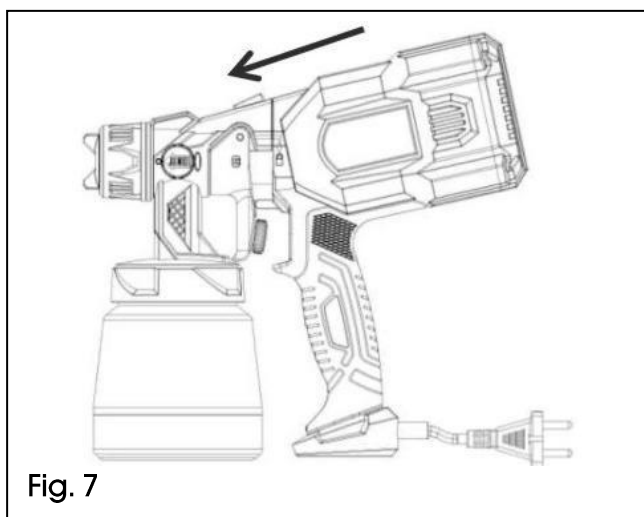
Incorrect: Do not flex wrist while spraying!

Remove the motor(Fig. 7)

1. Hold the gun with your hand and press the latch in the direction of the arrow.
2. At the same time hold the motor handle and rotary it counterclockwise 90°.
3. Pull out to remove the motor from the gun.

Connect gun body with motor(Fig. 8)

1. Hold the gun with your hand to align the slot on the gun with the slot on the motor and insert it.
2. Hold the motor handle and rotary it clockwise 90°.
3. When the gun and host are parallel, it is locked.



Starting to Spray(Fig. 9)

We recommend you spend some time practicing on cardboard, newspaper or scrap wood to familiarize yourself with how the spray gun works and the flow rate (i.e. how fast the material will spray) before starting.

- Start with the paint **FLOW ADJUSTING SCREW** at its **minimum setting**.

The paint flow adjuster controls the quantity of paint sprayed. Slowly increase the paint flow until the flow has reached a level you are comfortable with.

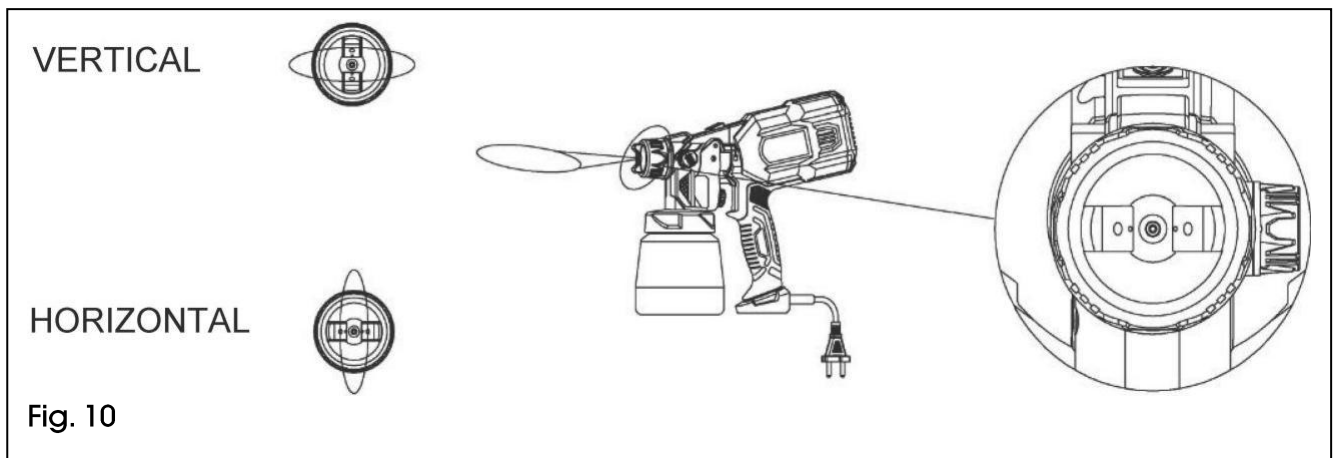
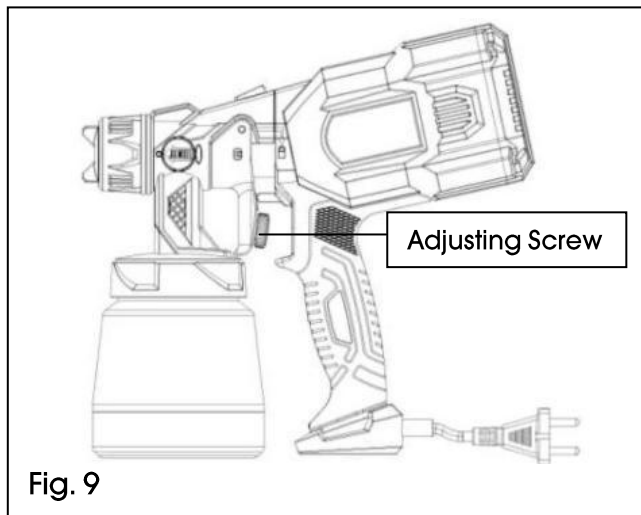
Adjusting Spray Patterns (Fig. 10)

1. The gun spray patterns can be changed from a horizontal to a round.
2. Detail pattern to a vertical pattern by adjusting the nozzle.

Spray Length Adjustment (Fig. 11)

Turn the Length Control Knob to adjust the rough shape from vertical to horizontal. Adjust the required length according to the spraying environment, reduce waste and save material.

1. The counterclockwise rotation shortens the length, and it rotates to the stop position, it is sprayed with the largest circle.
2. Adjust the knob to clockwise to increase paint volume, increase paint thickness.



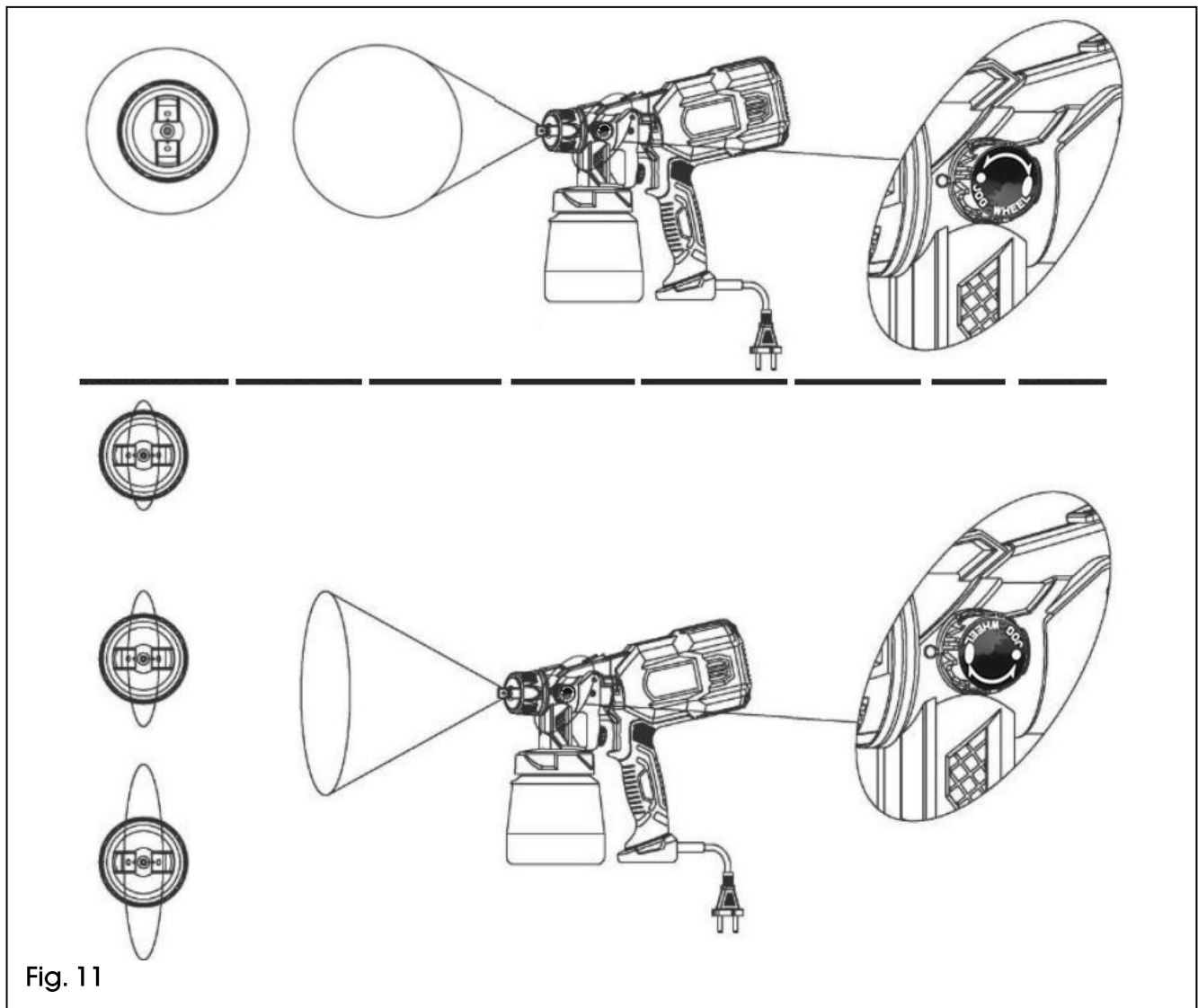


Fig. 11

Technique:

It is recommended you spend some time practicing on cardboard to familiarize yourself with how the spray gun works and the flow rate of the material.

When spraying, always keep your arm at the same distance from the surface and avoid turning your wrist as this will help give you an even paint distribution. You should spray a maximum of 20 to 30cm from a surface, this will give you your maximum spray width.

Be careful not to apply too much paint in the same area as this will lead to sags and drips- applying light coats is always better until you gain confidence as you can always go back over what you have sprayed.

The most commonly used technique for painting a large surface is the 'crisscross' technique, i.e. you spray the paint in a horizontal strip and then cross over these strips by spraying the



550W Spray Gun TTPS550

paint in vertical strips.

- 1) To achieve a horizontal strip, adjust to the horizontal position, then pull the trigger and move your arm up and down.
- 2) When you get to the end of the line, release the trigger for a moment and then spray in the opposite direction slightly overlapping the last strip.
- 3) Next, to achieve a vertical strip, adjust the spray direction plate to the horizontal position and then pull the trigger and move your arm up and down over the horizontal strips you just have sprayed, slightly overlapping the last strip you sprayed.

MAINTENANCE

WARNING! Special cleanup instructions for use with flammable Solvents.

1. Always flush spray gun, preferably outside.
2. Area must be free of flammable vapors.
3. Cleaning area must be well-ventilated.
- 1) Unplug the Spraygun.
- 2) Trigger the spray gun so that the material inside the spray gun flows back into the container.
- 3) Unscrew the container. Empty any remaining material back into the paint container.
- 4) Pour a small amount of the appropriate cleaning solution into the cup (warm, soapy water for latex materials; mineral spirits for oil-based materials). Clean cup and properly dispose of cleaning solution.
- 5) Pour a small amount of the appropriate cleaning solution into the cup.
- 6) Attach the cup to the gun, turn on the Spray gun, spray the solution through the gun for 20 seconds in a safe area or until the solution looks clean. Properly dispose of remaining cleaning solution.
- 7) Unplug the Spraygun.
- 8) Wipe the exterior of the cup and gun until clean.
- 9) Unscrew the nut and remove the spray pattern dial and nozzle
- 10) Clean the container, suction tube, spray pattern dial and nozzle with a cleaning brush and the appropriate cleaning solution.

Warning! Never clean nozzle or air holes in the spray gun with sharp metal objects.

Disposal

Power tools, accessories and packaging should be sorted for environmentally-friendly recycling.

Only for EC countries:



Do not dispose of power tools into household waste!

According to the European Directive 2002/96/EC on waste electrical and electronic equipment and its incorporation into national right, products that are no longer suitable for use must be separately collected and sent for recovery in an

environmentally-friendly manner.



550W Spray Gun TTPS550

DECLARATION OF CONFORMITY

The declaration is to certify that it conforms to CE, EMC, MD and RoHS directives:

EN55014-1: 2006 + A1: 2009 + A2: 2011

EN55014-2: 2015

EN61000-3-2: 2014

EN61000-3-3: 2013

All provisions of Annex 1 of Council Directive 2014/30/EU – EMC directive

EN60335-1: 2012 + A11: 2014

EN1953: 2013

All provisions of Annex 1 of Council Directive 2006/42/EC – the Machinery Directive

RoHS 2011/65/EU



Mr. Paul Kaye, UK QA Manager

Please read the following carefully

FUTURA Direct Ltd. and/or its distributor have provided the parts list and assembly diagram as a reference tool only.

Neither FUTURA Direct Ltd. or its distributor makes any representation or warranty of any kind to the buyer that he or she is qualified to do any repairs or replace any parts of this product. FUTURA Direct Ltd. and its distributor expressly state that all repairs or parts replacement should be done by certified or licensed technicians. The buyer assumes all risk and liability arising out of his or her repairs or parts replacement to the original product.

24 MONTHS LIMITED WARRANTY

If within 24 months from the date of purchase you experience any problems with your product, please return the product to its distributor/dealer for repair or replacement. This warranty DOES NOT COVER normal wear, or any damage as a result of accidents, misuse, abuse or negligence.

www.futura-direct.co.uk

We FUTURA Direct Ltd, England DN6 7AY declare that 550W Spray Gun is exclusively manufactured for FUTURA Direct Ltd and has been manufactured according to our fully quality assurance procedures.