

## APP



Google Play and the Google Play logo are trademarks of Google Inc.



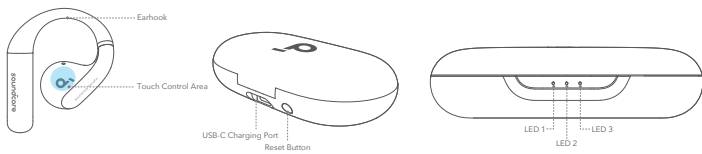
Apple and the Apple logo are trademarks of Apple Inc.



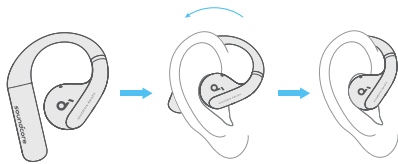
Download the soundcore app to experience 3D surround sound, adjust EQ settings, update firmware, and explore more.

If your earbuds cannot connect with the soundcore app, re-install the app or update it to the latest version in your mobile app store.

## OVERVIEW



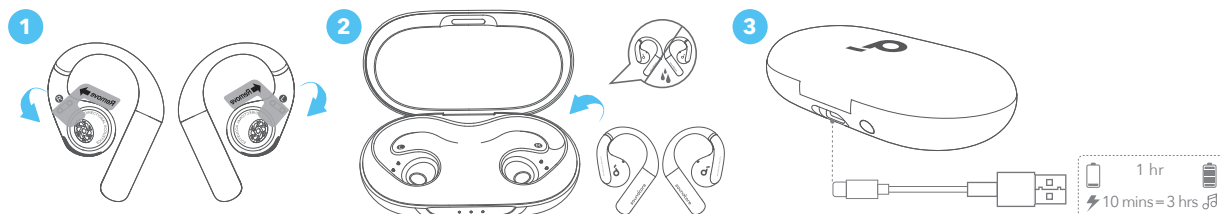
## WEARING



Pick up the earbuds from the charging case, then rotate the earhooks along the auricles of your ear to achieve proper positioning.

## CHARGING

**\*Remember to remove the insulation stickers on the earbuds before first use.**



1. Place the earbuds in the charging case and close it.

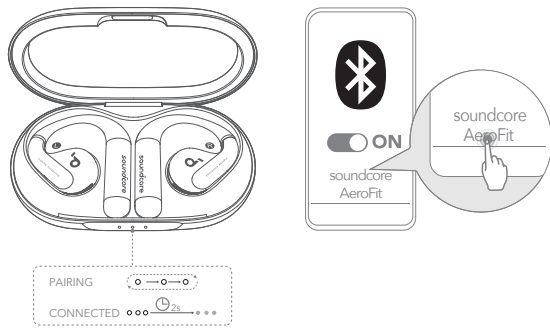
- Fully dry off the earbuds and the USB-C charging port before charging.

### Low Battery Indication

Earbuds: You will hear a voice prompt of battery running low.

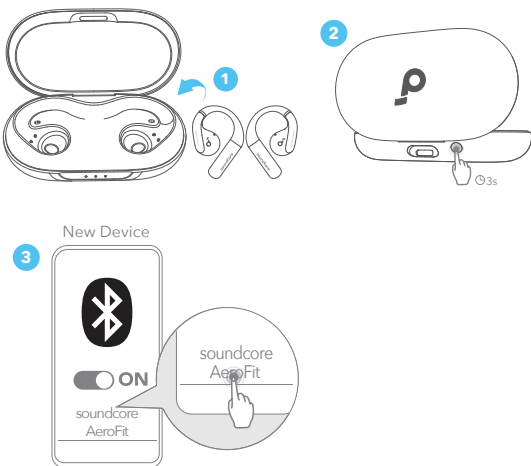
Charging case: The LED 1 indicator will light up for 3 seconds and then go off.

## POWERING ON & PAIRING



After removing the insulation stickers on the earbuds, return earbuds to the charging case, then press the reset button to activate Bluetooth pairing. Also, you can pair by closing and reopening the case lid once the earbuds are back in the case. Subsequently, the earbuds will automatically power on and enter Bluetooth pairing mode when connecting for the first time. Select **"soundcore AeroFit"** on your device's Bluetooth list to connect. When pairing, the LED indicators on the charging case will start scrolling. After the pairing is successful, the LED indicators on the charging case will light up for 2 seconds and then go off.

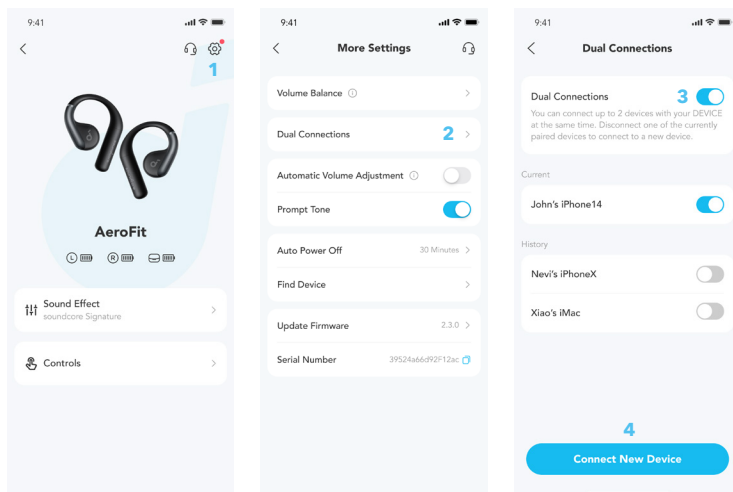
Once connected successfully, they'll automatically reconnect to your device every time you open the charging case, as long as you haven't deleted the pairing history from your device.



If you want to connect the earbuds to a new device in subsequent use, please follow the steps below:

1. Place the earbuds back into the charging case;
2. Press down the reset button and hold for 3 seconds until the LED indicators on the charging case start scrolling;
3. Select **"soundcore AeroFit"** on your new device's Bluetooth list to connect.

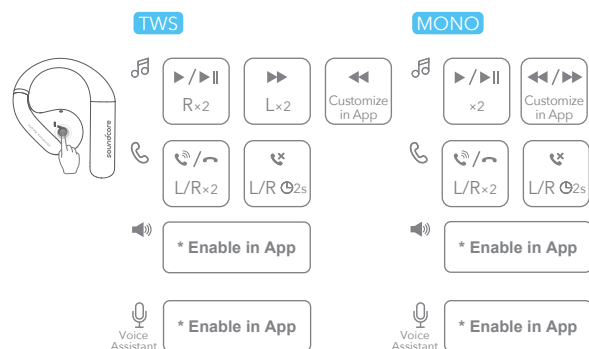
## DUAL CONNECTIONS



To connect the earbuds with two Bluetooth devices at the same time, open the soundcore app, go to settings and select **Dual Connections > Enable Dual Connections > Connect New Device**.

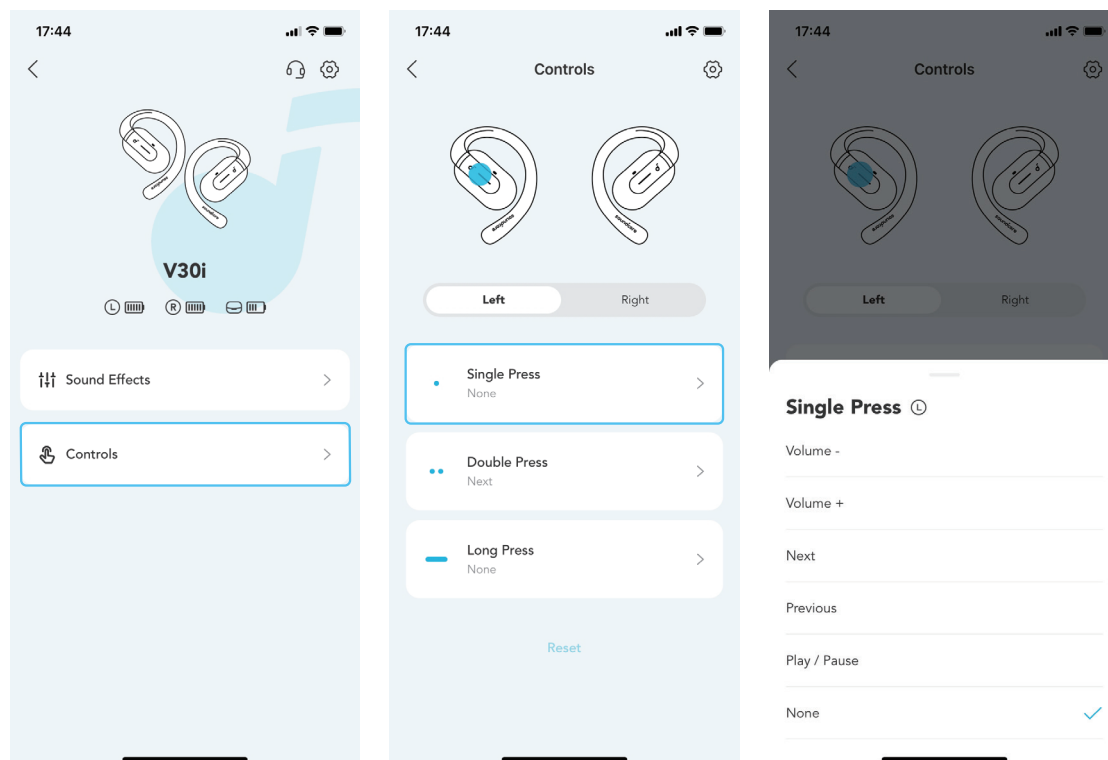
**\*This feature is turned off by default.**

## TOUCH CONTROLS



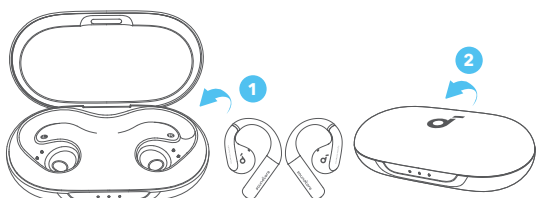
		TWS mode	Mono mode
🎵	Play / Pause	Touch twice (R)	Touch twice
	Previous track	Customize in soundcore app	Customize in soundcore app
	Next track	Touch twice (L)	
☎️	Answer / End a call	Touch twice (L/R)	Touch twice (L/R)
	Reject a call	Touch and hold for 2 seconds (L/R)	Touch and hold for 2 seconds
🔊+	Volume up	*Enable in soundcore app	*Enable in soundcore app
🔊-	Volume down	*Enable in soundcore app	
🗣️	Activate voice assistant	*Enable in soundcore app	*Enable in soundcore app

## Customize Touch Controls on soundcore App



Tap **Controls** in the home page, you'll be able to personalize the following actions for touch controls on either the left or right earbud: **Raise/lower volume, switch songs, play/pause music, wake up the Voice Assistant, and none.**

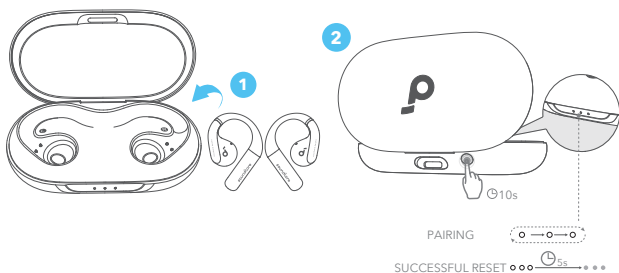
## POWERING OFF



To power off, return the earbuds to the charging case and close it.

**\*The earbuds will automatically power off after 30 minutes if they are not connected. The duration can be customized in the soundcore app.**

## RESET



Reset if the earbuds have issues pairing with each other or with other devices.

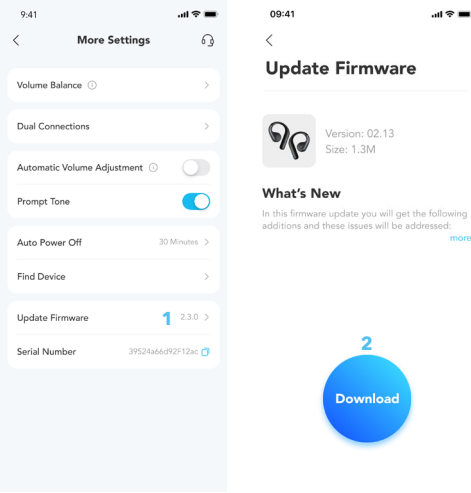
Delete the pairing history from your Bluetooth device first. Place the earbuds in the charging case and leave the case open. Press and hold the reset button on the charging case for 10 seconds until the LED indicators on the charging case start to scroll and then stay on for 5 seconds. At this time, your earbuds have been successfully reset.

## LED LIGHT GUIDE

LED Status	Battery Level
LED 1-3 ON ○ ○ ○	> 70%
LED 1-2 ON ○ ○ ●	30% - 70%
LED 1 ON ○ ● ●	5% - 30%
LED 1 Flashes ☀ ● ●	< 5% (needs charging)

LED Status	Battery Level during Charging
LED 1 Pulsing -○- ● ●	< 30%
LED 1 On, LED 2 Pulsing ○-○- ●	30% - 70%
LED 1 & LED 2 On, LED 3 Pulsing ○ ○-○-	70% - 95%
LED 1-3 Steady White for 10s ○ ○ ○ → 10s → ●	100%

# FIRMWARE UPDATE



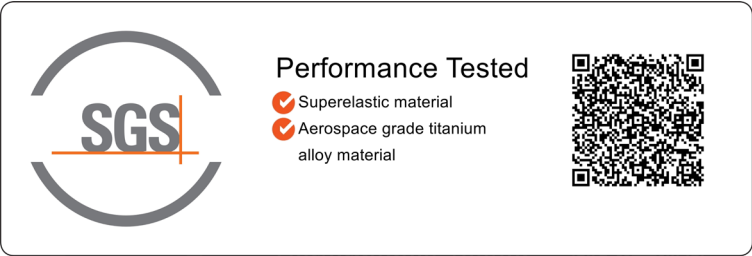
You will be informed once a new firmware version is detected when you connect the earbuds to the app. Ensure the earbuds are placed in the charging case and the case remains open until the firmware update is complete. During the update, ensure the earbuds are being charged and avoid any usage.

## SPECS

Specifications are subject to change without notice.


Input	5V =1.2A
Output	5V = 0.5A (0.25A per port)
Battery capacity	85mAh × 2 (earbuds); 750mAh (charging case)
Charging time	1 hour (earbuds); 2 hours (charging case)
Driver unit	14mm dynamic driver
Frequency response	20Hz - 20kHz
Impedance	11Ω
Waterproof rating (earbuds)	IPX7
Bluetooth version	5.3
Bluetooth range	10m / 33ft
Maximum volume	89dB

## A3872 SGS Certification Marks





Performance Tested

 Dermatologically Tested  
Material



## Customer Service



service@soundcore.com

support.mea@soundcore.com (For Middle East and Africa Only)

support@anker.com ( 日本 )

+1 (800) 988 7973 (US/Canada)

+44 (0) 1604 936200 (UK)

+49 (0) 69 9579 7960 (DE)

03 4455 7823 ( 日本 )

+86 400 0550 036 ( 中国 )

+82 02-1661-9246 ( 한국 )

+971 529750842 (Middle East & Africa)

+971 8000320817 (UAE)

+966 8008500030 (KSA)

+965 22069086 (Kuwait)

+20 8000000826 (Egypt)

+61 3 8331 4800 (Australia)

+90 (850) 460 14 14 (Türkiye)

+8 (800) 511-86-23 (Russia)

+91 18003138831 (India)



**Note: The 'x' of SN Code: xxxxxxxxxxxxxxxx is a variable, see below table.**

Variable 'x'	Range of variable	Content
Seventh	0-F	Denotes the hardware version which is not effected on the safety compliance.
Ninth and tenth	20,21,22,23,24...	Denotes the year, 20 means 2020, 21 means 2021, 22 means 2022, 23 means 2023, 24 means 2024, and so on.
Eleventh and twelfth	01,02,03...	Denotes weeks, 01 means the first week in this year, 02 means the secondary week in this year, and so on.
Eleventh and twelfth	0001-FFFF	Denotes serial No.

Hereby, Anker Innovations Limited declares that this device is in compliance with The Product Security and Telecommunications Infrastructure (Security Requirements for Relevant Connectable Products) Regulations 2023. For the Statement of Compliance, visit the website: <https://uk.soundcore.com/pages/psti-related>.

1. Power consumption in standby mode:  $\leq 0.5W$

2. Powermanagement:  $\leq 20min$

3. Information of applicable adapter:

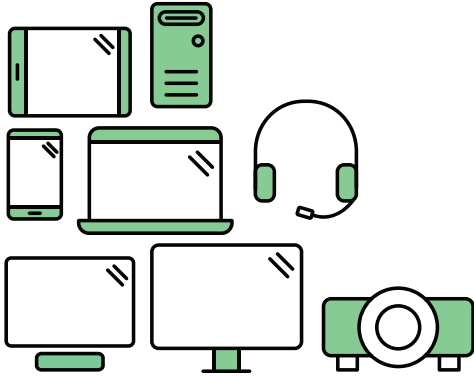
Brand: ANKER

Manufacturer: Anker Innovations Limited

Model: A2337

Input: 100-240Vac, 1A, 50-60Hz

Output: 5V  $\equiv$  3A / 9V  $\equiv$  3A / 12V  $\equiv$  2.5A / 15V  $\equiv$  2A / 20V  $\equiv$  1.5A (30W Max)



## Say hello to a more sustainable product

IT products are associated with a wide range of sustainability risks throughout their life cycle. Human rights violations are common in the factories. Harmful substances are used both in products and their manufacture. Products can often have a short lifespan because of poor ergonomics, low quality and when they are not able to be repaired or upgraded.

**This product is a better choice.** It meets all the criteria in TCO Certified, the world's most comprehensive sustainability certification for IT products. Thank you for making a responsible product choice, that help drive progress towards a more sustainable future!

Criteria in TCO Certified have a life-cycle perspective and balance environmental and social responsibility. Conformity is verified by independent and approved verifiers that specialize in IT products, social responsibility or other sustainability issues. Verification is done both before and after the certificate is issued, covering the entire validity period. The process also includes ensuring that corrective actions are implemented in all cases of factory non-conformities. And last but not least, to make sure that the certification and independent verification is accurate, both TCO Certified and the verifiers are reviewed regularly.

### Want to know more?

Read information about TCO Certified, full criteria documents, news and updates at **[tcocertified.com](https://tcocertified.com)**. On the website you'll also find our Product Finder, which presents a complete, searchable listing of certified products.