

realme

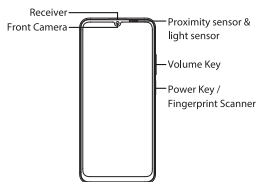
Quick Guide

RMX3933

This user manual provides the product safety information. Before using the phone, please read the Important Information Guide (IIG) carefully.

Greetings from realme mobile

This guide will show you how to use the phone and its important functions.



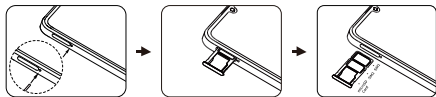
Install SIM and Memory card

Please turn off the phone before inserting the card.

This product is only compatible with Nano SIM on both slots of the SIM card holder.

Inserting non-standard cards can cause damage to phone SIM card holder.

Keep SIM Ejector Tool out of reach from children, to prevent accidental ingestion or impalement.



⚠ Warning

- ▶ Do not place the phone or battery near or inside the heating equipments, cooking equipments, high pressure vessels (such as microwave ovens, induction cooker, electric oven, heater, pressure cooker, water heater, gas stove, etc.) to prevent the battery overheating which may lead to an explosion.
- ▶ The original charger, data cable and battery shall be used. Unapproved chargers, data cables, or batteries that are not certified by the manufacturer may result in electric shock, fire, explosion, or other hazards.

- ▶ When charging, please place the device in an environment that has a normal room temperature and good ventilation. It is recommended to charge the device in an environment with temperature ranging from 5°C~35°C.

- ▶ Back cover can't be removed.

How to reboot the phone

Press and hold the Power Button and Volume Up Button at the same time until the realme boot animation is displayed to reboot the phone.

How to Transfer Old Mobile Content to a New Mobile

You can use realme Clone Phone to easily transfer photos, videos, music, contacts, messages, apps, etc from your old phone to the new one.

1. If you have an old Android phone, first scan the QR code below, then download and install Clone Phone, next open Clone Phone on both the new and old phones, and follow the on-screen instructions to complete the operation.



<https://i.dclonephone.colors.com/download>

2. If you have an old iPhone, open Clone Phone on the new phone directly, and follow on-screen instructions to sign in to iCloud account and sync the files.

How to switch system languages

Go to Settings—System—Languages—System Languages. Select the corresponding language.

The device supports: English, Hindi & Nepali for inputting.

The device also supports: Assamese, Bengali, Gujarati, Hindi, Kannada, Kashmiri, Konkani, Malayalam, Manipuri, Marathi, Nepali, Oriya, Punjabi, Sanskrit, Sindhi, Tamil, Telugu, Urdu, Bodo, Santhali, Maithili, Dogri and English for readability.

Some content may differ from your device depending on the region, service provider, or software version, and is subject to change without prior notice.

