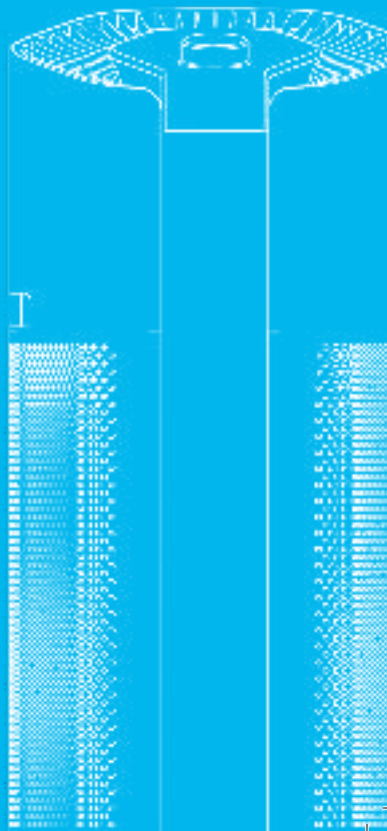


SKYE

USER MANUAL

English

Please Read and Keep for Future Reference





Thank you

for choosing to buy an Air+Health air purifier.

We **BELIEVE** in safe spaces.

We are **DEDICATED** to making the best air purifiers on earth to enable you to live your healthiest life.

We **STRIVE** to apply the best technology and research into delivering you safe and clean air.

The latest version of this user manual can be found on
airhealth.com



CONTENTS

1	Best Practices
2	Meet Your New Skye
4	Quick Start
6	Controls & Interface
8	Settings
10	Air Quality Indicator
12	Alerts
13	Air+Health App
14	Care & Maintenance
16	Help & Support
18	Safety Precautions & Warnings
22	Warranty Information
24	Disclaimer
26	FCC Statement

Best Practices

Run Skye 24/7

For the highest effectiveness, Skye should run all the time.

Give Skye Space

Skye will work in any room, but for it to purify the most air, it needs space around it, away from walls and furniture to help maximize its airflow.

Skye is designed for large rooms such as living rooms, large bedrooms, and open floor plans.

Treat Skye Well

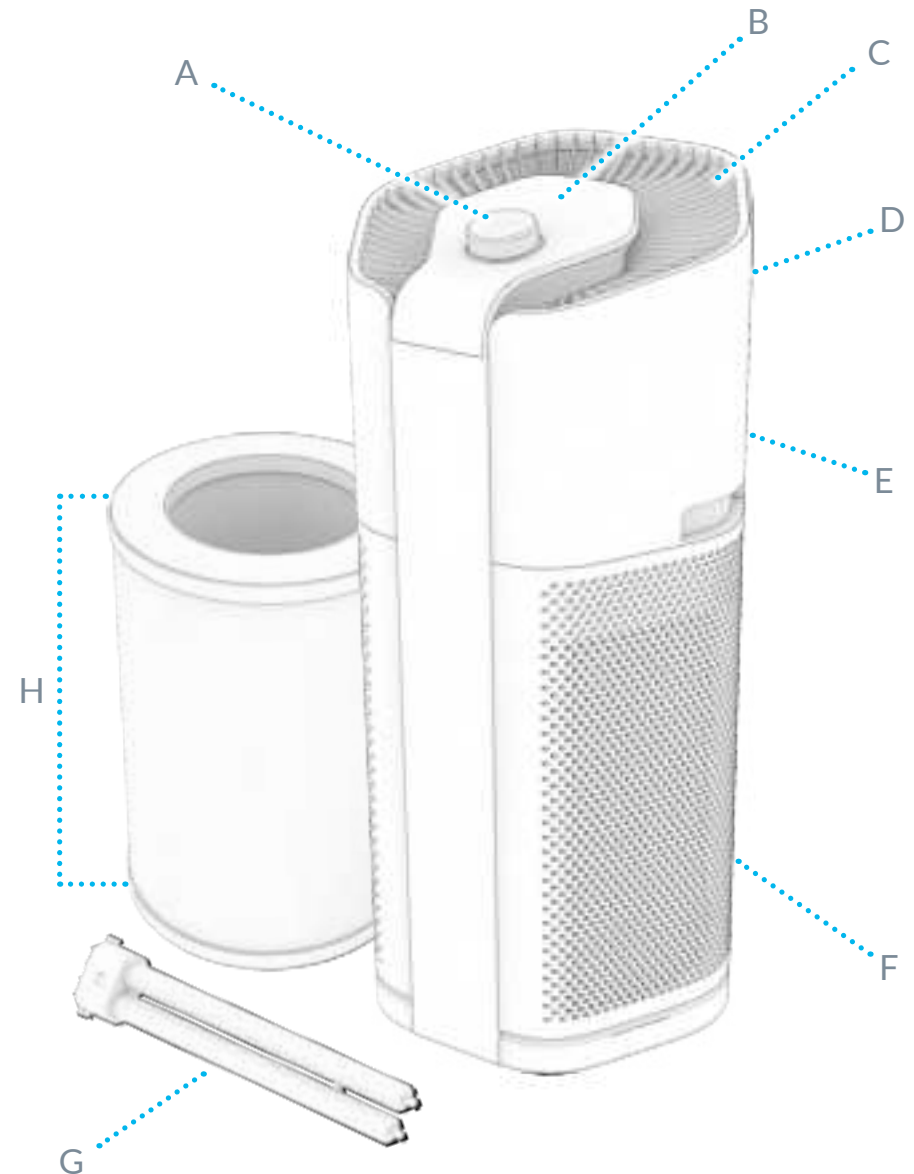
Skye requires a new filter about every six months and a new UVC lamp every year to perform at its best.

Sign up to automatically receive your replacement filters and lamps at airhealth.com/skye

Meet Your New Skye

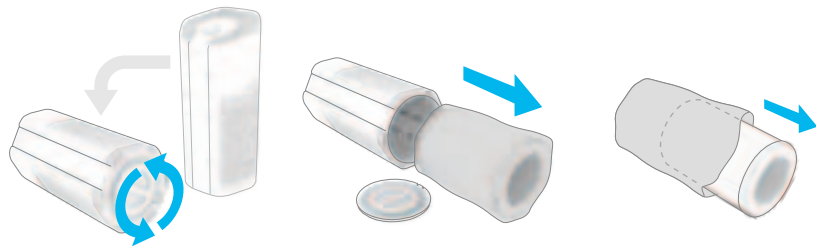
Unit:

- A** Control Dial
- B** User Interface Screen
- C** Clean Air Exit
- D** Power Button
- E** VOC & Particle Sensor
- F** Power Connection Port
- G** UVC Lamp
- H** PRO-Cell Filter
 - Pre-filter
 - Carbon
 - HEPA
 - PCO



Quick Start

Remove Packaging

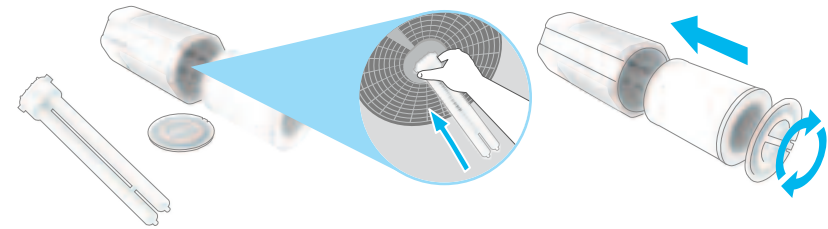


- 1 Lay Skye down on its side (avoid laying on its face). Unscrew the base cover (turn left).
- 2 Remove the PRO-Cell filter from Skye.
- 3 Remove outer plastic bag from PRO-Cell filter.



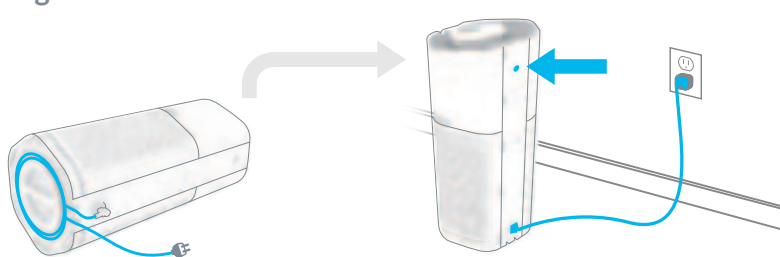
ALWAYS DISCONNECT POWER BEFORE PERFORMING ANY MAINTENANCE SUCH AS REPLACING THE FILTER AND/OR LAMP.

Install Lamp and Filter



- 4 Remove the UVC lamp from the box.
- 5 Hold the base of the lamp and plug into Skye.
- 6 Place the PRO-Cell filter back into Skye and screw the cover back on (turn right) until it clicks.

Plug In and Power On



- 7 Plug power cord into Skye and wrap any excess cord around the base.
- 8 Lift Skye back up and place in an open space to aid airflow.
- 9 Plug the power cord into a power outlet and press the power button (on back).

Start Purifying Your Air



Download on the
App Store

GET IT ON
Google Play

- 10 Skye will turn on after the power button is pressed.
- 11 Download the Air+Health app to complete set-up and enable controls from your phone.

Controls & Interface

Home Screen:

- A

Air Quality Indicator
0-500 scale, the number will change colors to indicate different levels of air quality.
- B

Settings
Turn all the way left until the ⚙️ (cog) icon is selected (white) and click to enter settings.
- C

Filter Life
Color will change to alert when the filter needs to be replaced.
- D

Fan Level
On the home page, turning the dial changes the fan level.
- E

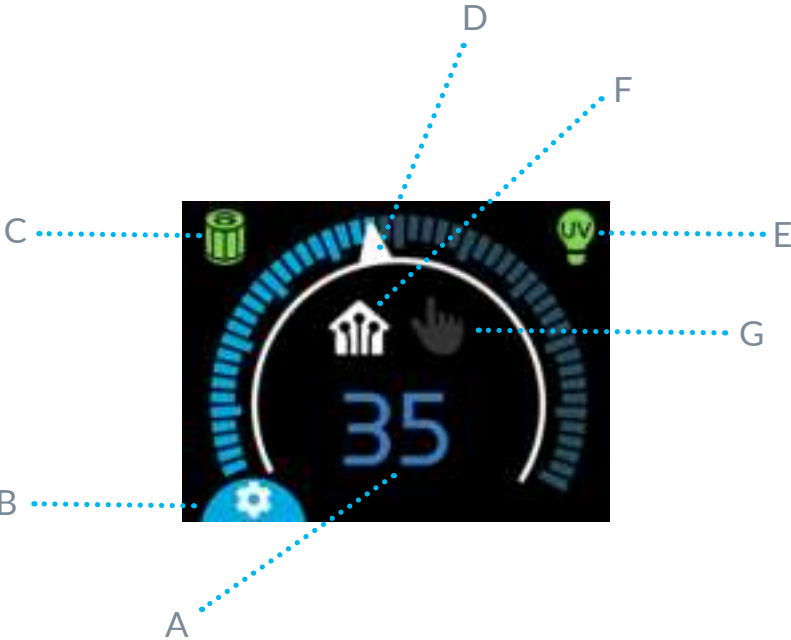
Lamp Life
Color will change to alert when the lamp needs to be replaced.
- F

Smart Mode
🏠 On this setting, you set the minimum fan speed and Skye will automatically increase fan speed if it measures poor air quality. The fan will never decrease below this speed.
- G

Manual Mode
👉 On this setting, you set the fan speed and Skye will not change speed.



Active Fan Speed Change



Settings

Entering Settings



Clicking on the cog icon will take you to Settings, scroll between pages and click to control Skye's WiFi, lamp, and filter status.



1. Return Home

This is the first page in settings, clicking here will return you to the home dashboard.



2. WiFi Status & Control

This page displays WiFi connectivity status. Clicking here will open WiFi pairing and WiFi on and off.



3. Lamp On/Off

Clicking on this page will turn the UVC lamp on and off.



4. Filter Life

This page shows how much filter life is remaining. Click here when you replace your filter to reset the filter life.



5. Lamp Life

This page shows how much lamp life is remaining. Click here when you replace your lamp to reset the lamp life.



Child Lock

Click and hold on any screen to activate the child lock; click and hold again to deactivate.

WiFi is ON



Skye is NOT connected to WiFi.

WiFi is ON



Skye is connected to WiFi.

WiFi is OFF



Skye is NOT connected to WiFi.



There are four different filter life levels. Green is good and red is very low.



There are four different lamp life levels. Green is good and red is very low.

Air Quality Indicator



Good
(0-50)

The air quality is good, keep Skye running to maintain this level of air quality.



Moderate
(51-100)

The air quality is moderate, keep Skye running or use Smart Mode to clean your air more efficiently.



Poor
(101-150)

The air quality is poor, turn the fan level up or use Smart Mode to return your air to a healthy level.



Unhealthy
(151-200)

The air quality is unhealthy, turn the fan level up higher or turn Skye to Smart Mode so it can clean things up for you.



Very Unhealthy
(201-300)

The air quality is very unhealthy, turn the fan level up all the way or turn Skye to Smart Mode to neutralize your air!



Hazardous
(301-500)

The air quality is hazardous, turn the fan level up all the way or turn Skye to Smart Mode to save your air!



The sensor and air purifier are not medical devices and the information they provide is not intended to diagnose, treat, cure, or prevent any disease or condition. Consult your doctor if you are unsure what levels of particulate matter are safe for you and visit www.airnow.gov for more information on particulate matter and all aspects of air pollution.



ALWAYS DISCONNECT POWER BEFORE PERFORMING ANY MAINTENANCE
SUCH AS REPLACING THE FILTER AND/OR LAMP.

Alerts



Lamp Life is Low

This means your lamp life is very low and it is time to replace. Click “x” to ignore or “reset” after you change the lamp.



Filter Life is Low

This means your filter life is very low and it is time to replace. Click “x” to ignore or “reset” after you change the filter.



Check Lamp

This means the lamp is not fully plugged in. Unplug Skye and open the base to check that the lamp is properly plugged in.



E2: Error Code

Please reset the device by powering off the device, unplug the power cord, and wait 10 seconds. Plug the power cord back into the wall and power on the device. If the warning symbol persists, please contact customer service.



Lamp Malfunction

This means the lamp has malfunctioned. Confirm the lamp is installed correctly. If this persists, the lamp may need to be replaced.

Air+Health App

Download the Air+Health App

Download the Air+Health App from the App Store or Google Play. Open the app, register your new device, and follow the on-screen instructions to set up a new account.



Note:

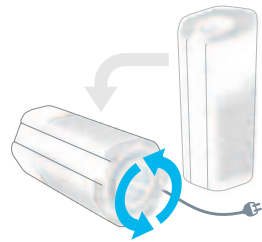
Connecting Skye to WiFi will enable filter and lamp status indicators on the device and in the app. This will help you track when your Skye needs a new filter or lamp.



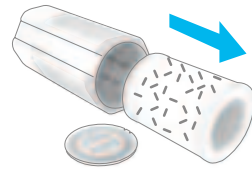
ALWAYS DISCONNECT POWER BEFORE PERFORMING ANY MAINTENANCE SUCH AS REPLACING THE FILTER AND/OR LAMP.

Care & Maintenance

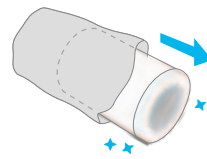
Replacing the Filter



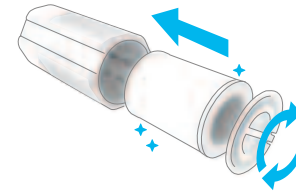
- 1** Unplug Skye and lay it down on its side. Unscrew the base cover (turn left).



- 2** Remove the old PRO-Cell filter from Skye.



- 3** Remove any packaging from the new PRO-Cell filter.

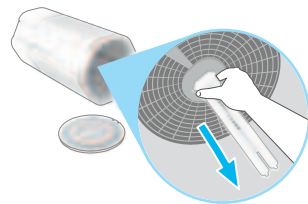


- 4** Re-insert the new filter and close the base cover (turn right).



- 5** Plug Skye back in and reset the filter life in settings or on the app. Reference Quick Start section on how to plug Skye in and power on.

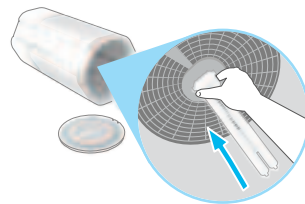
Replacing the Lamp



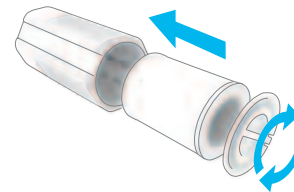
- 1** Remove the old UVC lamp from Skye and recycle it.



- 2** Remove the new UVC lamp from its packaging.



- 3** Holding the base, plug the new lamp into Skye.



- 4** Re-insert the filter and close the base cover (turn right).



- 5** Plug Skye back in and reset the lamp life in settings or on the app. Reference Quick Start section on how to plug Skye in and power on.

Help & Support

Thank you for welcoming Air+Health Skye into your home. We promise to make the best air purifiers in the world so that you can live your healthiest life.

If you have any questions or feedback, please reach out.

Visit our website at
www.airhealth.com

Email us at
contact@airhealth.com

Call us at
[1.866.765.1587](tel:1.866.765.1587)

Safety Precautions & Warnings

WARNING - READ ALL INSTRUCTIONS BEFORE USING THIS APPLIANCE TO REDUCE THE RISK OF FIRE, ELECTRIC SHOCK, OR INJURY.

PLEASE SAVE FOR REFERENCE.

This appliance has a polarized plug (one blade is wider than the other). To reduce the risk of electric shock, this plug is intended to fit in a polarized outlet only one way. If the plug does not fit fully in the outlet, reverse the plug. If it still does not fit, contact a qualified electrician. Do not attempt to defeat this safety feature. Unplug or disconnect the appliance from the power supply before replacing filters or UV bulb, or when appliance is not in use.

WARNING: To reduce the risk of fire or electric shock, do not use this fan with any solid-state speed control device. Do not operate any purifier with a damaged cord or plug, or if the wall socket is loose. Do not run cord under carpeting, throw rugs, runners, or similar coverings. Do not run cord under furniture or appliances. Arrange cord away from traffic area and where it will not be tripped over.

WARNING: Skin or eye damage may result from directly viewing the light produced by the bulb in this apparatus. Always power down and disconnect power before performing any maintenance such as replacing or servicing the filter and/or lamp. Only use approved replacement filters and lamps, manufactured by Air+Health.

- Remove all packaging, including the filter bag, before use.
- Products that are obviously damaged must not be operated.
Never operate the air purifier if the plug or cord is damaged or appears damaged. Only qualified service personnel should ever replace or attempt to replace a damaged power cord or plug.
If the appliance is damaged or malfunctions, turn it off, disconnect it from the power supply and contact Air+Health.
- This product must only be connected to a wall socket outlet matching the supply plug type and rating stated on the rating plate.
- Do not alter the plug in any way.
- Locate the air purifier near the outlet wall socket and do not use extension cords.
- Do not place the cord near a heated surface.
- Always turn off the air purifier before unplugging the air purifier from outlet.
- Do not attempt to service the air purifier in any way other than to replace or clean the air filter and lamp.
- Only use approved Air+Health replacement filters and lamps.
Using any non-approved filters or lamps voids the warranty.
Replace the UV bulb with the models specified by Air+Health on the Air+Health website.
- Always unplug the power cord from the electrical outlet when the air purifier is not in use or when changing the filter and lamp.
- Never run the air purifier unless it is fully assembled. Do not operate without the filters and/or lamp installed.

Safety Precautions & Warnings (Continued)

- Never use the power cord to pick up, carry, drag, pull, or lift the air purifier. Do not pull the cord against or around sharp corners and edges.
- Always remove the plug from its power outlet by holding onto the plug itself and pulling gently, do not pull from the cord itself.
- Only use the purifier with the power cable provided.
- Only clean this machine with a damp cloth, do not use any liquid cleaning agents (ex. solvents, bleach, etc.), or water.
- Only use in an upright position. Do not place anything on top of the air purifier or obstruct the air intake or outlet vents.
Do not drop items into the air purifier.
- Use care when operating the air purifier by keeping all foreign objects, fingers, body parts, hair, loose clothing, jewelry, etc., away from openings. Do not insert fingers or other items into the air intake or outlet vents.
- Do not sit on, stand on, climb onto or hang from the appliance
- Never touch the air purifier or its plug when your hands are wet.
- If moving the air purifier, always lift and carry your Skye by the handles. Do not carry by housing or base.
- Do not use outdoors.
- Do not use the device in a humid environment such as a bathroom. Improper usage may cause fire, electric shock, or malfunction.
- The air purifier should not be used in a flammable and combustible environment or environment with corrosive air.
- Use only as described in this manual.
- Ensure appliance is always placed on firm level surface before operation. To help ensure stable placement of the appliance and limit risk of tipping, only place on stable, flat floor surfaces and make sure the cord is fully clipped into the cord holder.
- If the device is demonstrating unwanted or unexpected behavior, unplug the device and contact Air+Health Customer Support.

Warranty Information

Air+Health ("Company") warrants that your Skye unit ("the product") will perform to the specifications stated and shall be free from defects in material and workmanship under normal use for the limited period indicated on the Air+Health website, from the date of shipment, subject to the provisions outlined on the Air+Health website.

www.airhealth.com/warranty

Your serial number can be found on your Skye's rating plate which is on the base of the appliance.

Visit www.airhealth.com/support for online help, support videos, general tips, and useful information about Skye and Air+Health's other air treatment solutions.

Disclaimer

Your Skye's sensor is intended be comparable to other commercially available consumer air sensors. At sufficient concentrations, it is sensitive to all physical particles, like dust, smoke, components of vehicle exhaust, soot, and many other airborne substances, as well as volatile organic compounds (VOCs) which are gases that are emitted from certain solids or liquids. VOCs include a variety of chemicals, some of which may have short- and long-term adverse health effects. Skye's air quality sensors monitor multiple VOCs and report a Total Volatile Organic Compounds (TVOC) which is used to calculate the IAQ.

The levels of particles and VOCs it reports may not precisely conform to other methods of measuring particulate matter pollution. The measurements are intended to be a close estimation of the indoor air quality in the room in which Skye is currently operating.

For people who are: immunocompromised; have compromised heart or lung function; have a history of asthma, heart disease, or any other heart and lung conditions; children; and the elderly should always follow

any action plans for asthma attacks, heart problems, or any other health issue regardless of the air quality levels reported by the Skye sensor.

The sensor and air purifier are not medical devices and the information they provide is not intended to diagnose, treat, cure, or prevent any disease or condition. Consult your doctor if you are unsure what levels of particulate matter are safe for you and visit www.airnow.gov for more information on particulate matter and all aspects of air pollution.

As with any product, your device uses new plastics and materials in its manufacture. We do all we can to minimize off-gassing from these materials, including shipping each device with carbon filters to absorb smells. Despite this, there may be a noticeable smell during the first 24-48 hours of use, which is safe and expected. If these odors are produced by VOCs, the particulate matter sensor in your Skye may detect their presence and automatically adjust the fan speed to remove them. Nevertheless, this particular type of off-gassing is harmless and temporary. After the initial settling period, scents should significantly subside. At that point, your filter has reached full effectiveness.

FCC Statement

WARNING: Changes or modifications to this unit not expressly approved by the party responsible for compliance could void the user's authority to operate the equipment.

This device complies with part 15 of the FCC Rules.

Operation is subject to the following two conditions:

- (1) This device may not cause harmful interference, and
- (2) this device must accept any interference received, including interference that may cause undesired operation.

Any changes or modifications not expressly approved by the party responsible for compliance could void the user's authority to operate the equipment.

This equipment has been tested and found to comply with the limits for a Class B digital device, pursuant to Part 15 of the FCC Rules. These limits are designed to provide reasonable protection against harmful interference in a residential installation. This equipment generates, uses and

can radiate radio frequency energy and, if not installed and used in accordance with the instructions, may cause harmful interference to radio communications.

However, there is no guarantee that interference will not occur in a particular installation. If this equipment does cause harmful interference to radio or television reception, which can be determined by turning the equipment off and on, the user is encouraged to try to correct the interference by one or more of the following measures:

- Reorient or relocate the receiving antenna.
- Increase the separation between the equipment and receiver.
- Connect the equipment into an outlet on a circuit different from that to which the receiver is connected.
- Consult the dealer or an experienced radio/ TV technician for help.

FCC RF Radiation Exposure Statement:

This equipment should be installed and operated with minimum distance of 20cm between the radiator and all persons.

READ ALL INSTRUCTIONS BEFORE USING THIS APPLIANCE TO
REDUCE THE RISK OF FIRE, ELECTRIC SHOCK, OR INJURY.
PLEASE SAVE FOR REFERENCE.

Air+Health Support

Visit airhealth.com/support for online help, support videos, general tips, and useful information about Skye and Air+Health's other air treatment solutions.

air+health

airhealth.com

contact@airhealth.com

1.866.765.1587