



RAZER KISHI V3 PRO XL

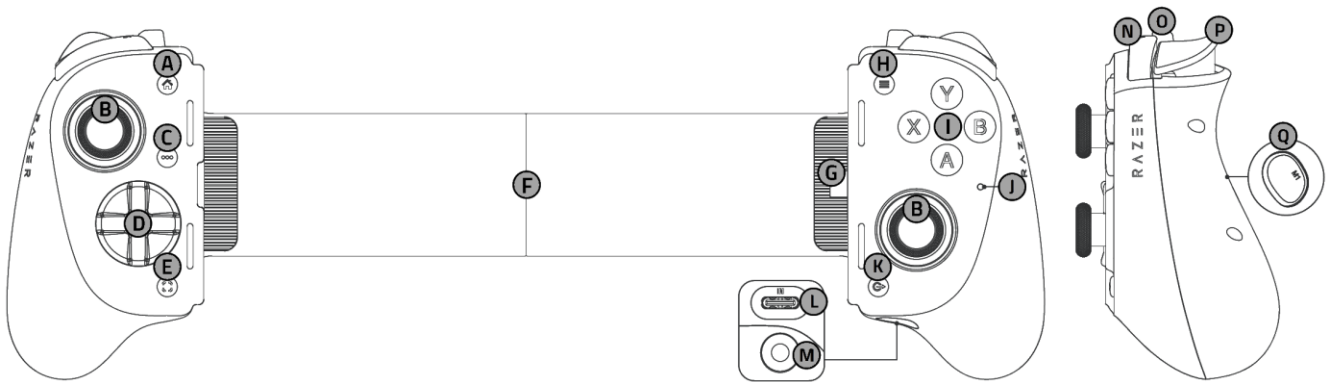
MASTER GUIDE

CONTENTS

1. WHAT'S INSIDE	2
2. WHAT'S NEEDED	4
3. LET'S GET YOU COVERED	4
4. GETTING STARTED	5
5. USING THE CONTROLLER	7
6. SAFETY AND MAINTENANCE	12
7. LEGALESE	13

1. WHAT'S INSIDE

- Razer Kishi V3 Pro XL

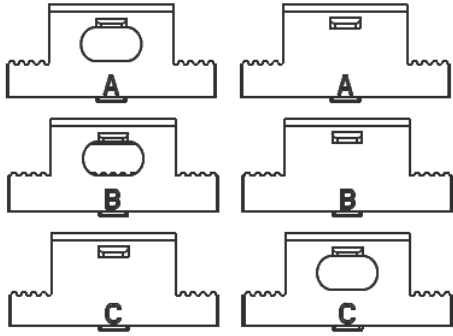


- A. Home button
- B. Full-sized TMR thumbsticks with swappable caps (L3/R3)
- C. Options button
- D. Razer Mecha-tactile 8-way floating D-pad
- E. Share button
- F. Extendable bridge
- G. USB Type C connector
- H. Menu button
- I. Mecha-tactile action buttons
- J. Status indicator
- K. Razer Nexus button
- L. USB Type C port*
- M. 3.5 mm audio + mic port
- N. Full-sized bumpers (L1 / R1)
- O. Multi-function mouse-click claw grip bumpers (L4 / R4)
- P. Full-sized triggers (L2/R2)
- Q. Multi-function mouse-click **back paddles** (M1/M2)

- 2 Replaceable thumbstick caps (tall concave/short convex)



- 3 pairs of interchangeable rubber cushions**



- Important Product Information Guide

*Only supports PC connection and passthrough charging. USB Type C audio and other accessories are not supported.

**Rubber cushions A are pre-installed with the controller.

2. WHAT'S NEEDED

PRODUCT REQUIREMENTS

- Mobile device or PC with a USB Type A / Type C port
 - iOS 18 / Android™ 14 or higher
 - Windows® 11 64-bit or higher
 - macOS Sonoma **with Apple Silicon “M” series** or higher
- Internet connection for app installation

i Full compatibility list available here: rzt.to/kishi-v3-pro-xl

3. LET'S GET YOU COVERED

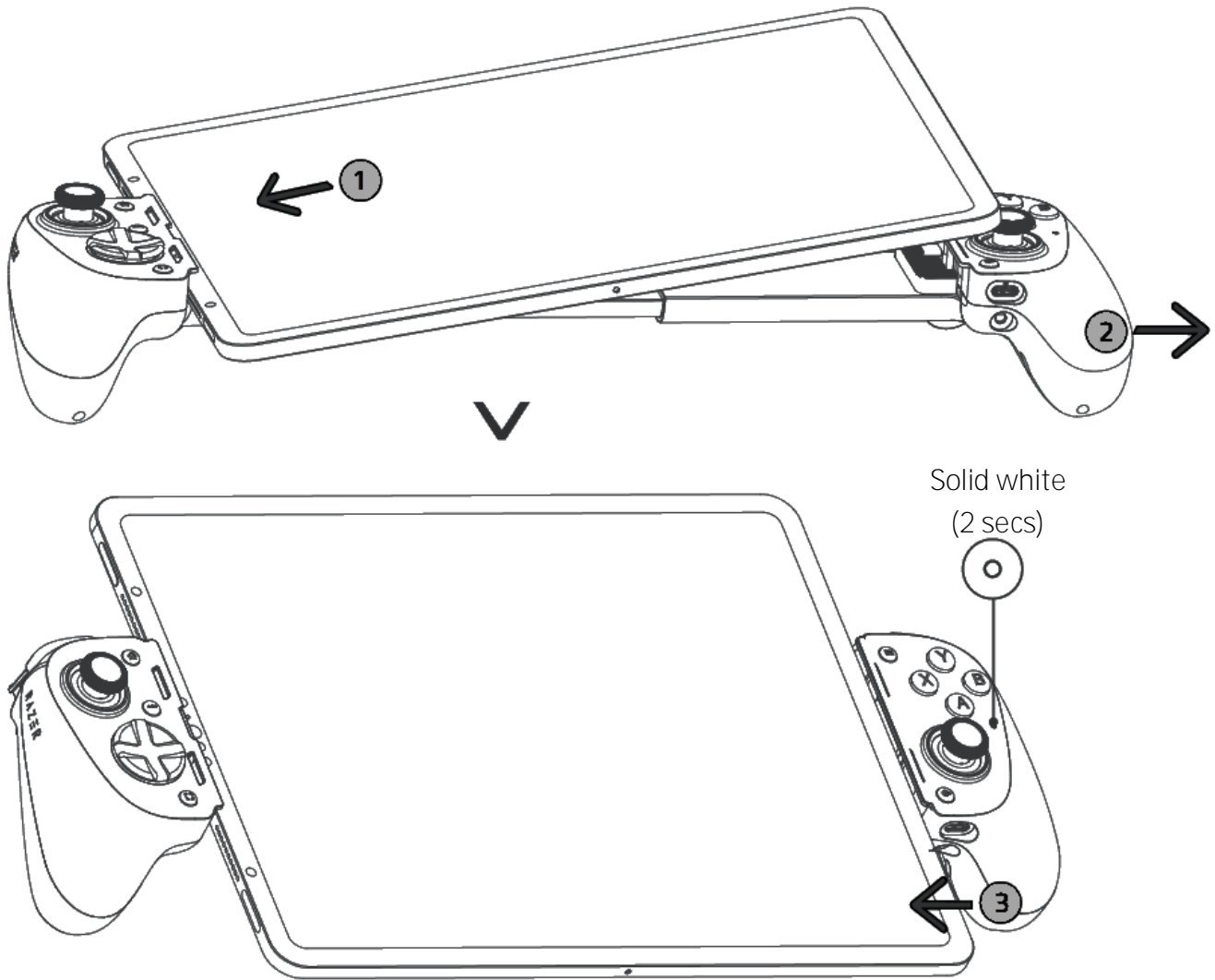


Register your product and score exclusive benefits
razerid.razer.com/warranty

Got a question? Ask the Razer Support Team at support.razer.com

4. GETTING STARTED

SET UP FOR MOBILE



i Maximum supported dimensions: 12.32 mm thickness (including camera) x 282 mm length.

INSTALL THE RAZER NEXUS GAME LAUNCHER (FOR MOBILE DEVICES)

Launch compatible games, remap controller buttons, enable or disable haptic feedback, take screenshots, record or share gameplay, and much more.



RZR.TO/NEXUS-DL
(for China only)

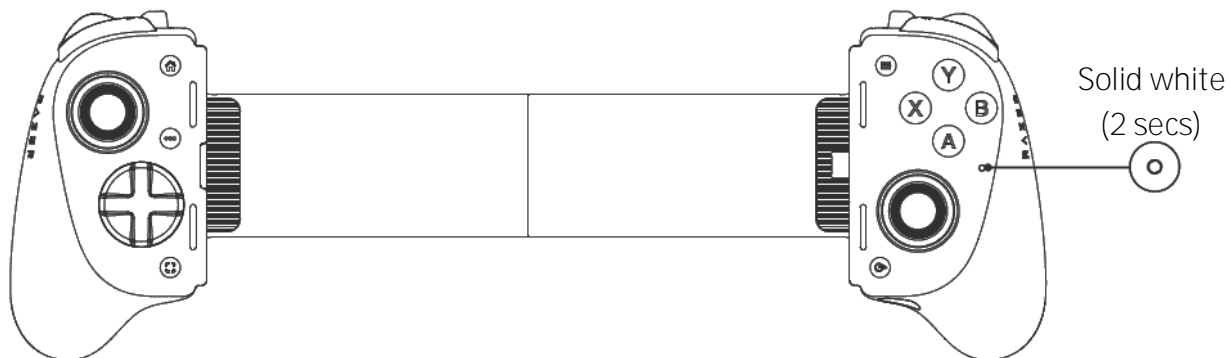
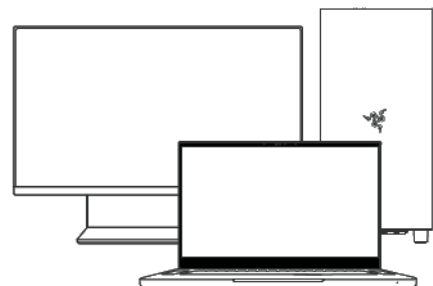
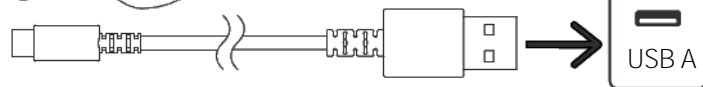
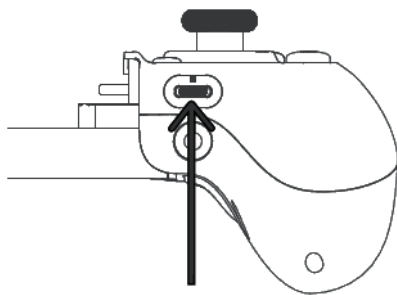


RZR.TO/NEXUS-APP



Razer Nexus
Game Launcher

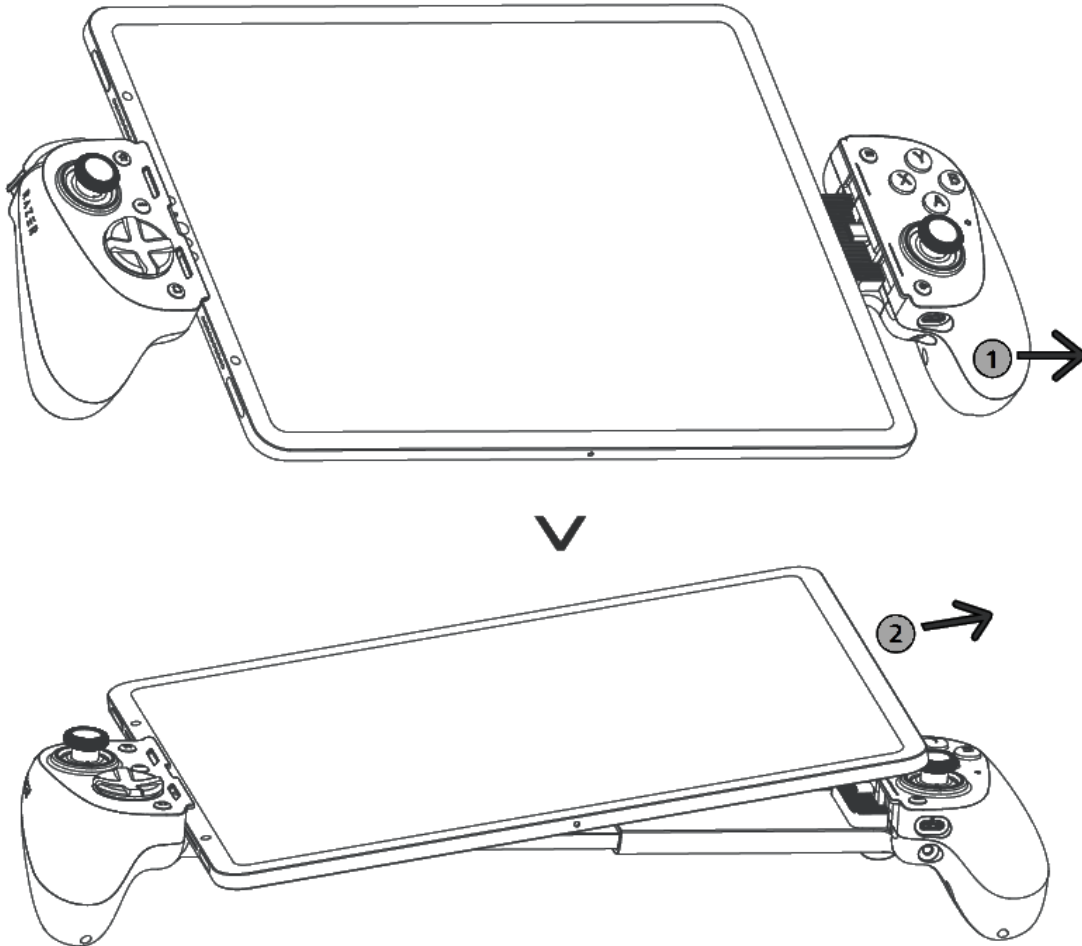
SET UP FOR PC



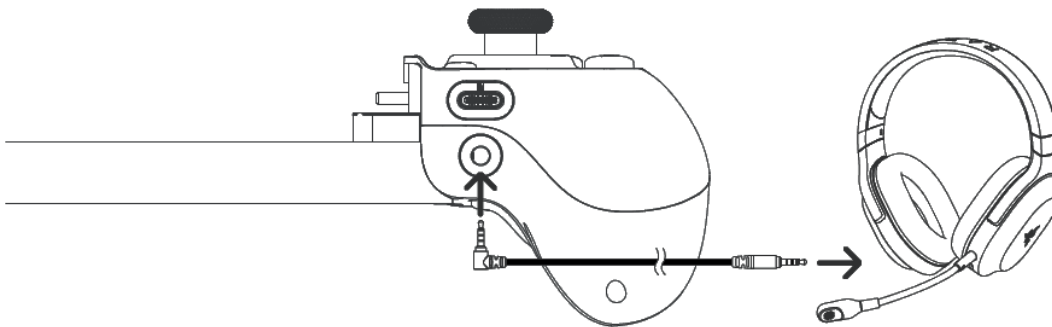
i Charging cable not included. Detach your mobile device when using the controller on a PC. The controller will use XInput on Windows.

5. USING THE CONTROLLER

DETACHING YOUR MOBILE

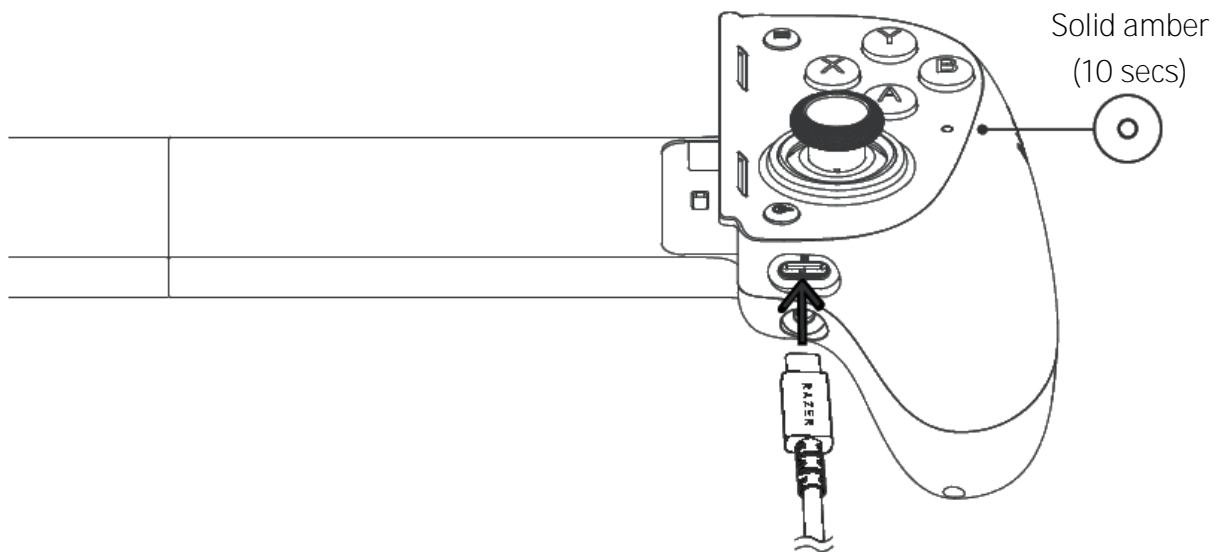


PASSTHROUGH AUDIO



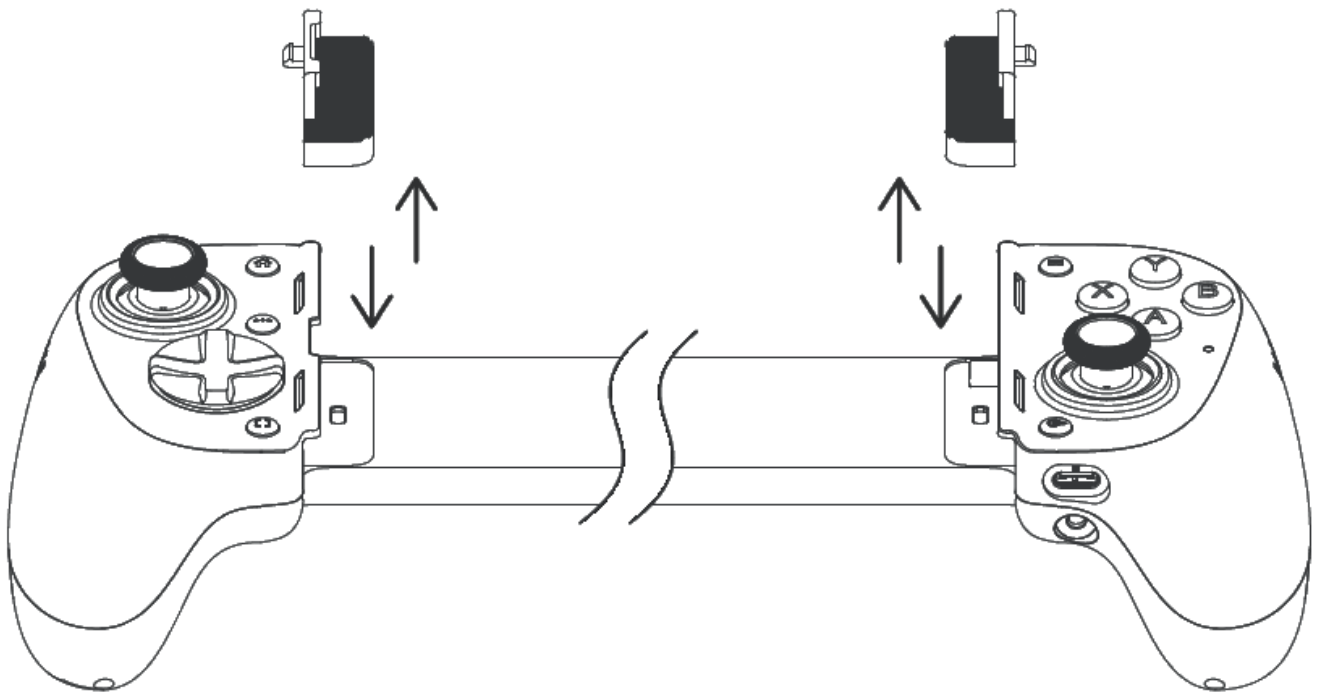
i Razer headset sold separately. This feature works with both mobile devices and PC connections.

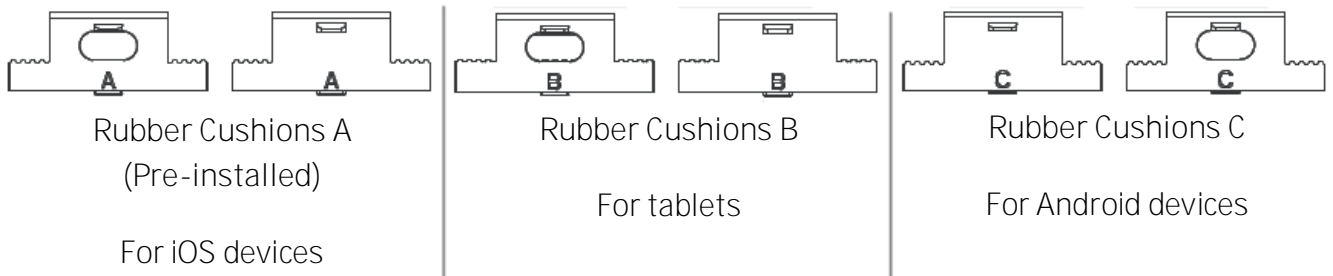
PASSTHROUGH CHARGING



- i** Charging cable not included. Make sure to use only the included USB A to USB C cable. USB Type C audio and other accessories are not supported.

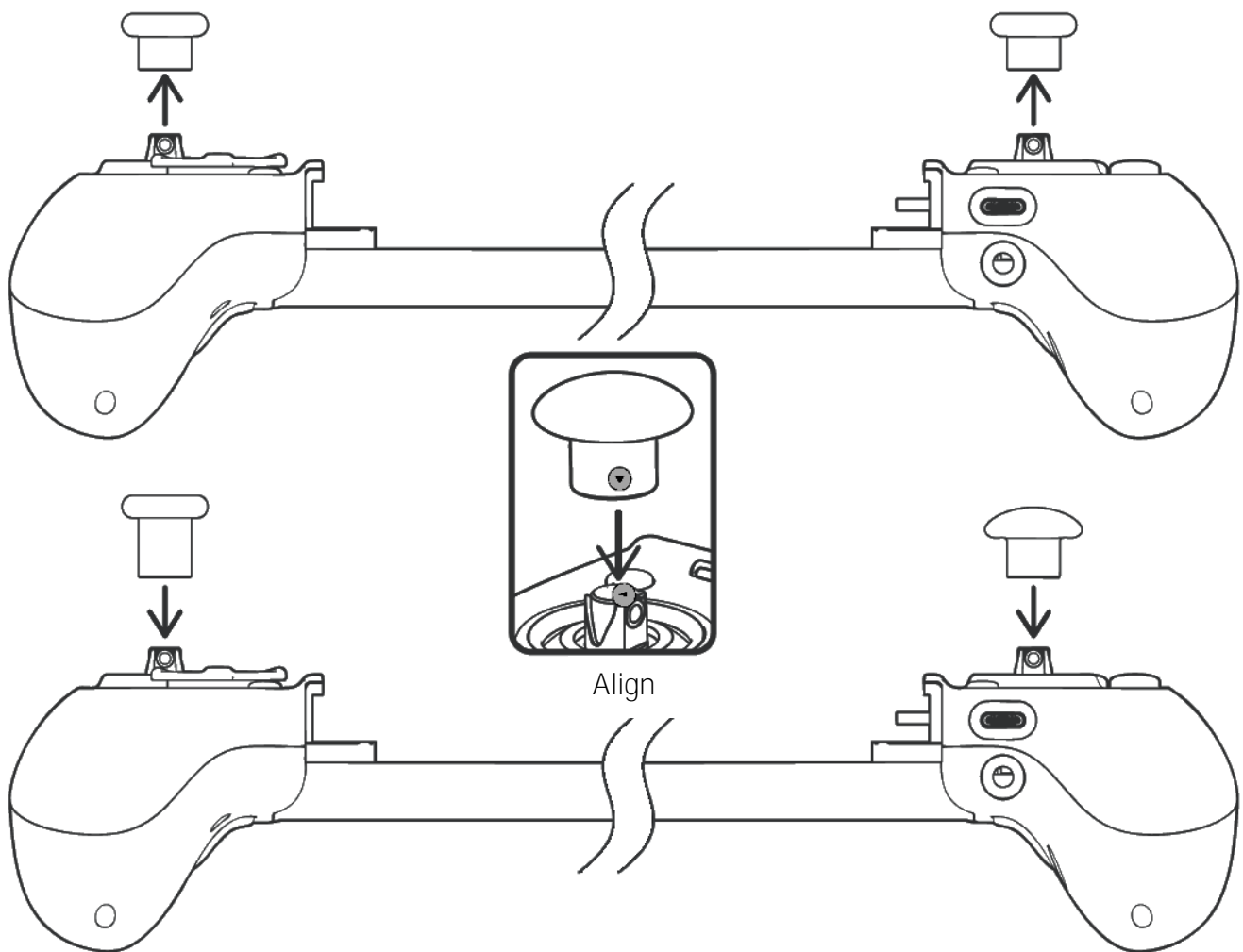
USING THE RUBBER CUSHIONS





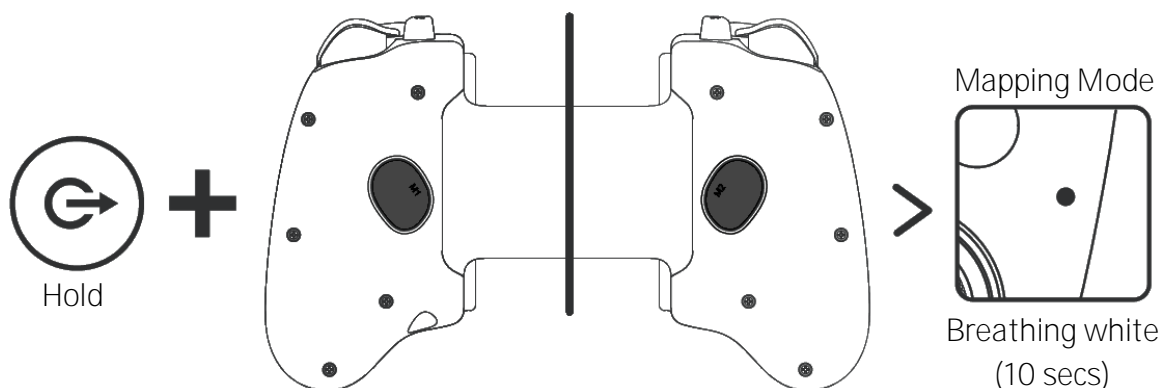
i By default, rubber cushions A are pre-installed with the controller. For a case-fitted phone, you can *also try removing the rubber cushions to see if it's compatible with the controller.*

CHANGING THE REPLACEABLE THUMBSTICK CAPS

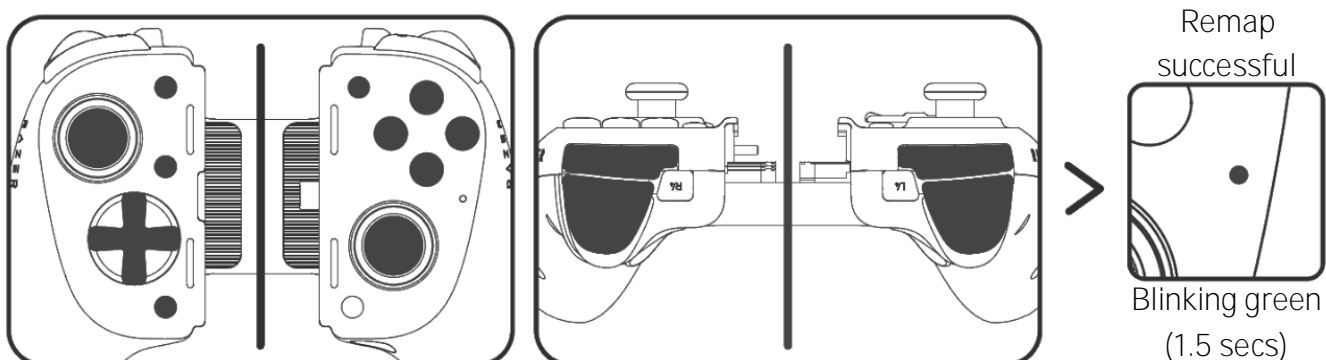


REMAPPING THE MULTI-FUNCTION BUTTONS (M1/M2/L4/R4)





1. Hold down the Nexus button and the Multi-Function bumper/paddle you want to remap.



2. Press the button you want to assign to it.



SHORTCUT COMMANDS

Input	Function
 + R1 Hold Press	Increase Haptics ¹ Strength
 + L1 Hold Press	Decrease Haptics ¹ Strength
 + X Hold Press	Use XInput ² Mode
 + A Hold Press	Use HID ² Mode

¹Haptics compatibility may vary per game and device.

²The Razer Nexus Game Launcher app can automatically switch the controller between HID and XInput modes when launching vibration-compatible games.

³Requires the Razer Nexus Game Launcher app installed.



Hold

+ L2/R2

Press

Change to Analog/Digital
mode for the chosen trigger



Press

Take screenshot



Hold

Record video³

6. SAFETY AND MAINTENANCE

SAFETY GUIDELINES

To achieve maximum safety while using your Razer Kishi V3 Pro XL, we suggest that you adopt the following guidelines:

Should you have trouble operating the device properly and troubleshooting does not work, make sure to unplug the device (if applicable) and contact the Razer hotline or go to support.razer.com for support.

Don't take apart the device, and **don't** attempt to operate it under abnormal current loads. Doing so will void your warranty.

Keep the controller's accessories out of the reach of small children to avoid accidents and/or injuries.

Keep the device away from liquid, humidity, or moisture. Operate the device only within the specific temperature range of 0°C (32°F) to 40°C (104°F). Should the temperature exceed this range, detach the device to let its temperature stabilize to an optimal level.

MAINTENANCE AND USE

The Razer Kishi V3 Pro XL requires minimum maintenance to keep it in optimum condition. Once a month, we recommend you clean the device using a soft cloth or cotton swab to prevent dirt buildup.

7. LEGALESE

COPYRIGHT AND INTELLECTUAL PROPERTY INFORMATION

©2025 Razer Inc. All rights reserved. Razer, the triple-headed snake logo, Razer logo, "For Gamers. By Gamers.", and "Razer Chroma" logo are trademarks or registered trademarks of Razer Inc. and/or affiliated companies in the United States or other countries. All other trademarks are the property of their respective owners.

Android, Google, Google Logo, Google Play, and the Google Play logo are trademarks of Google LLC.

Use of the Made for Apple badge means that an accessory has been designed to connect specifically to the Apple product(s) identified in the badge and has been certified by the developer to meet Apple performance standards. Apple is not responsible for the operation of this device or its compliance with safety and regulatory standards. Please note that the use of this accessory with an Apple product may affect wireless performance.

Apple, the Apple logo, iPad mini, iPhone, Made for iPad logo, and Made for iPhone logo are trademarks of Apple Inc., registered in the U.S. and other countries. App Store is a service mark of Apple Inc. iOS is a trademark or registered trademark of Cisco in the U.S. and other countries and is used under license.

Windows and the Windows logo are trademarks or registered trademarks of the Microsoft group of companies.

Razer Inc. ("Razer") may have copyright, trademarks, trade secrets, patents, patent applications, or other intellectual property rights (whether registered or unregistered) concerning the product in this guide. Furnishing of this guide does not give you a license to any such copyright, trademark, patent or other intellectual property right. The Razer Kishi V3 Pro XL (the "Product") may differ from pictures whether on packaging or otherwise. Razer assumes no responsibility for such differences or for any errors that may appear. Information contained herein is subject to change without notice.

LIMITED PRODUCT WARRANTY

For the latest and current terms of the Limited Product Warranty, please visit [razer.com/warranty](https://www.razer.com/warranty).

LIMITATION OF LIABILITY

Razer shall in no event be liable for any lost profits, loss of information or data, special, incidental, indirect, punitive or consequential or incidental damages, arising in any way out of distribution of, sale of, resale of, use of, or inability to use the Product. In no event shall Razer's liability exceed the retail purchase price of the Product.

GENERAL

These terms shall be governed by and construed under the laws of the jurisdiction in which the Product was purchased. If any term herein is held to be invalid or unenforceable, then such term (in so far as it is invalid or unenforceable) shall be given no effect and deemed to be excluded without invalidating any of the remaining terms. Razer reserves the right to amend any term at any time without notice.