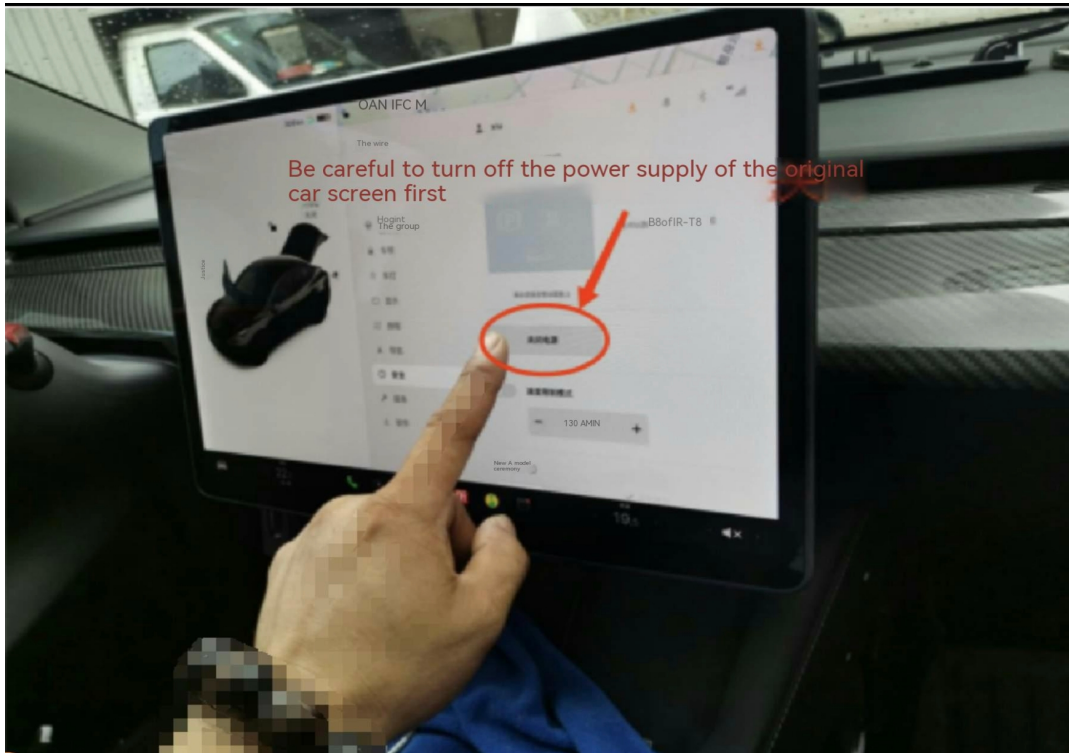


TESLA'S rear seat entertainment system description that disassemble and assemble

1

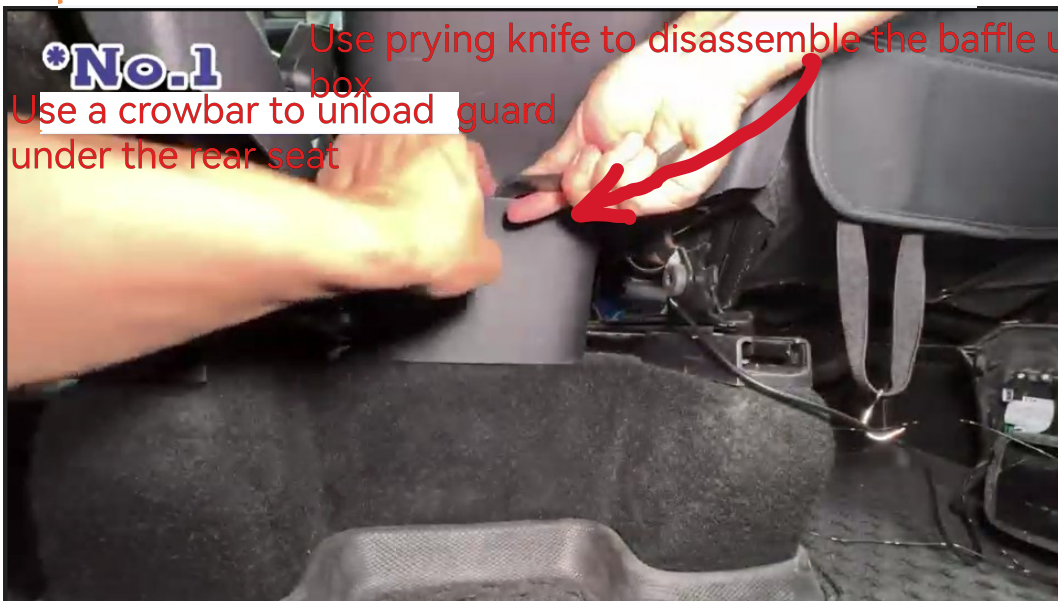
Power off the car



power off the car to prevent contact short circuit during the installation process



1、



2 Get out of the rear seat 's air outlet

***No.2**

Get out of the rear seat 's air outlet

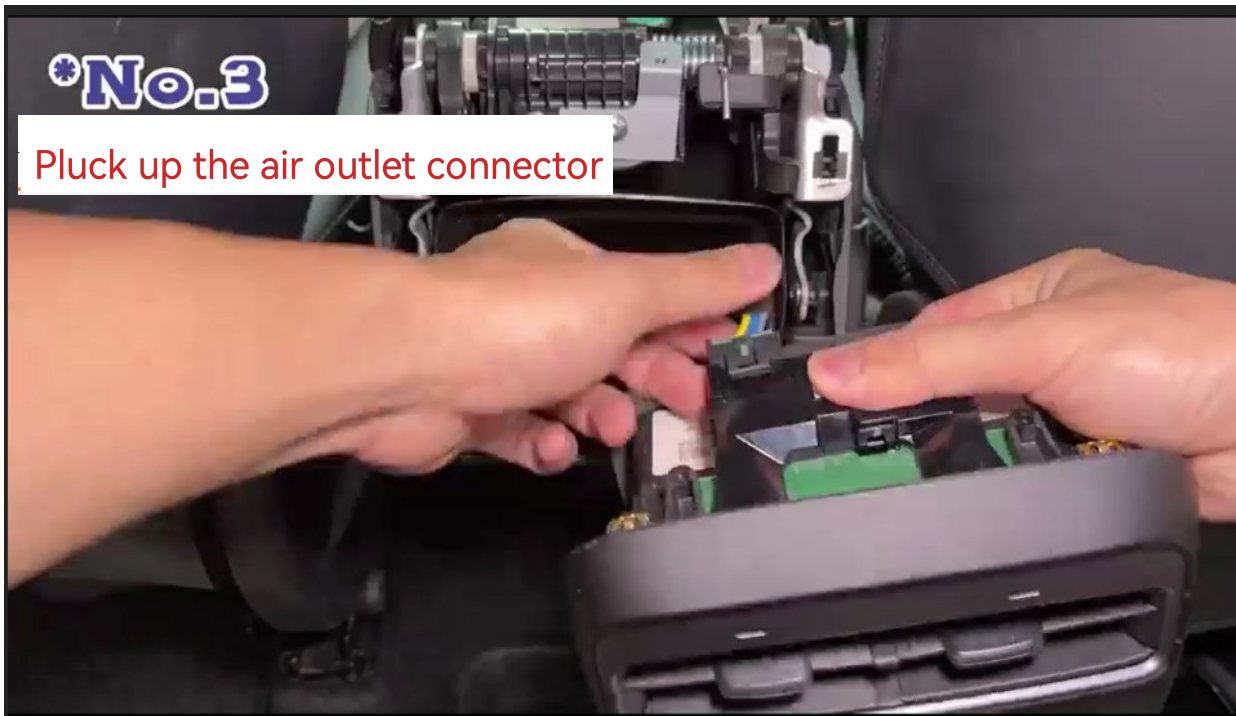


Pull back or use prying knife

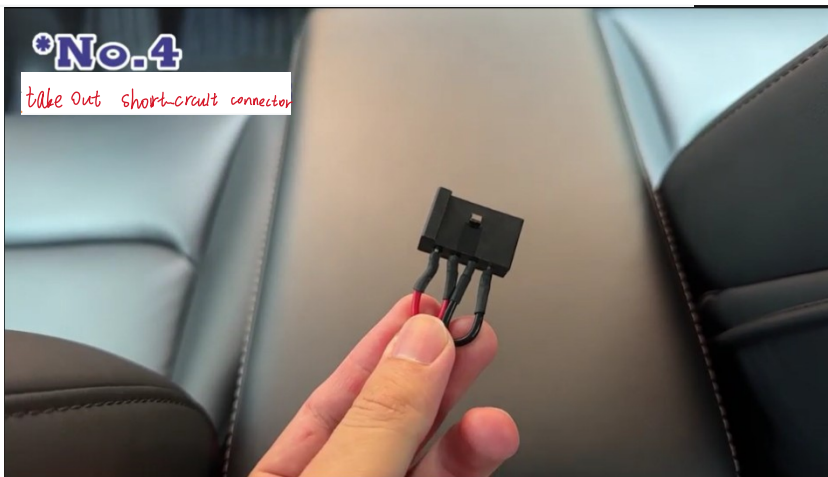
Get out of the rear seat 's air outlet



Pluck up the air outlet connector



Take out short-circuit interface in our accessories package



Docking of short-circuit interface components with the original vehicle air outlet connection seat



***No.5**

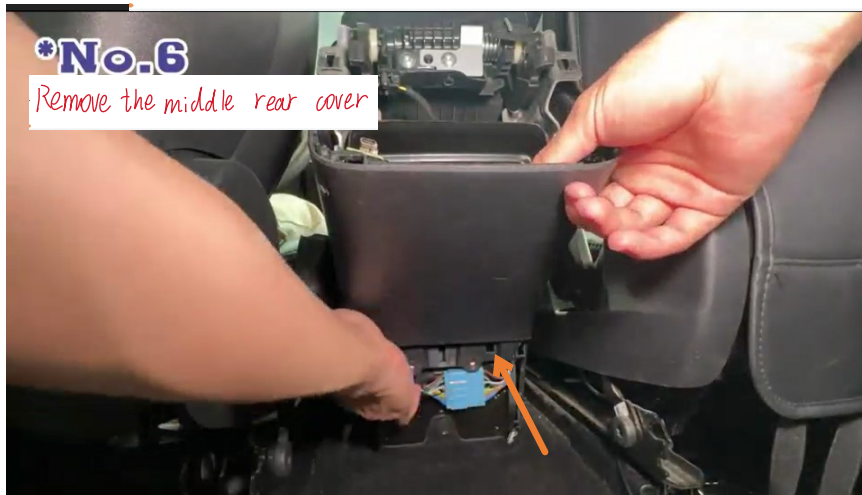
Connect the outlet of the original car

Remove the screws from the bottom of the trunk

Remove the screws from the bottom of the trunk



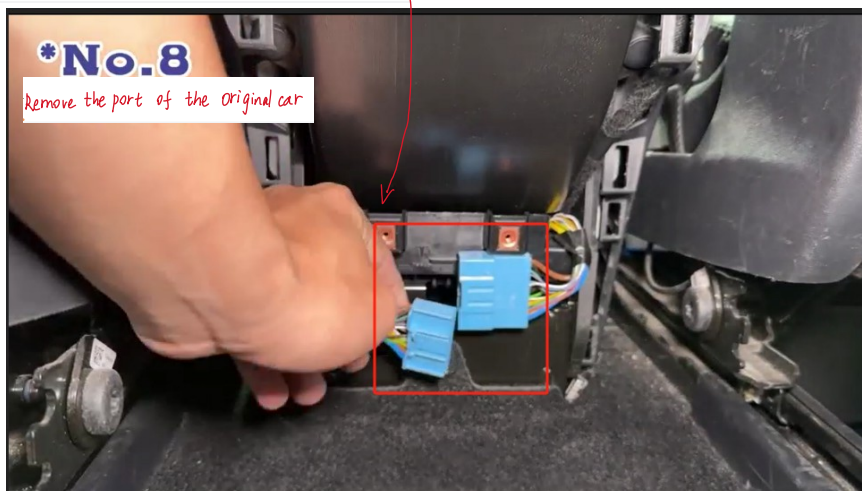
First unscrew the screw at the bottom right corner of the middle cover and then pull the middle cover upwards



***No.6**

Remove the middle rear cover

Pull out the original car connector seat



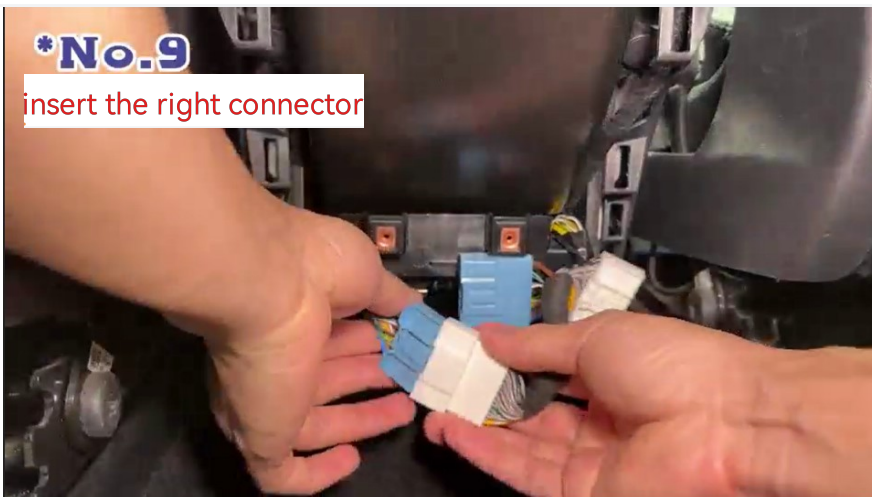
***No.8**

Remove the part of the original car

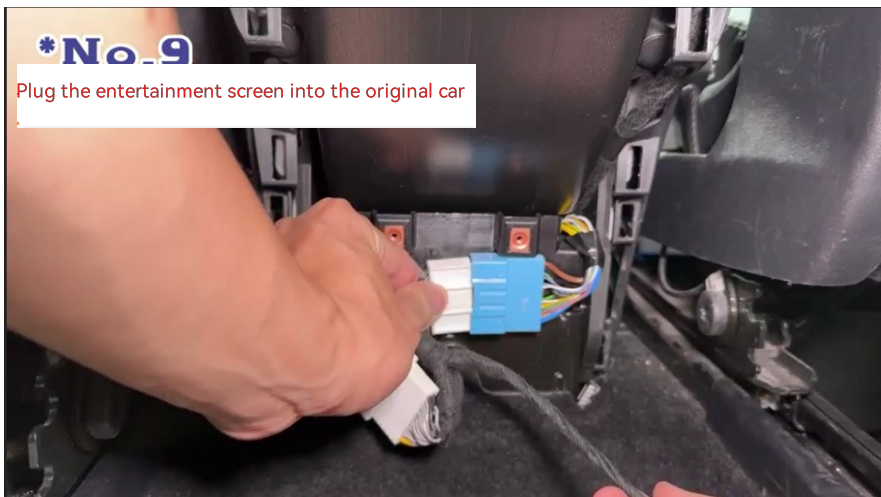
Take out our host and connecting cable



Insert the corresponding connector with the original car connector first insert the left connector



Then,insert the right connector



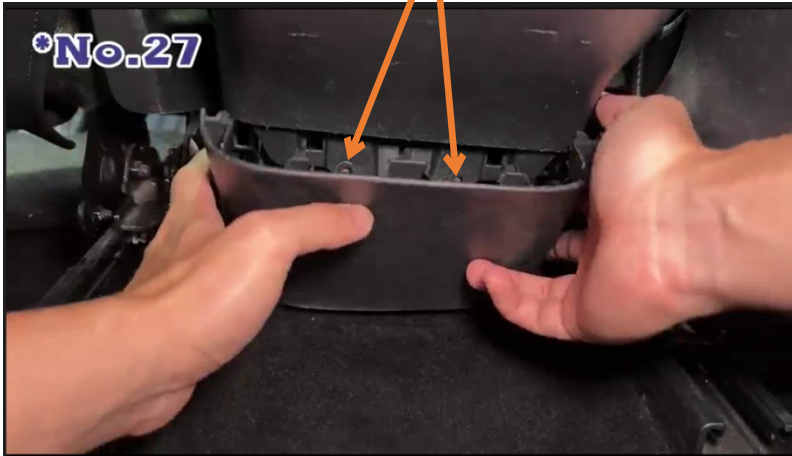
When restoring the middle cover, we need to put our wires up



Put the connector in the correct position



Install the middle of the cover, screw the screw, the cover under the bottom



Replace the bottom cover

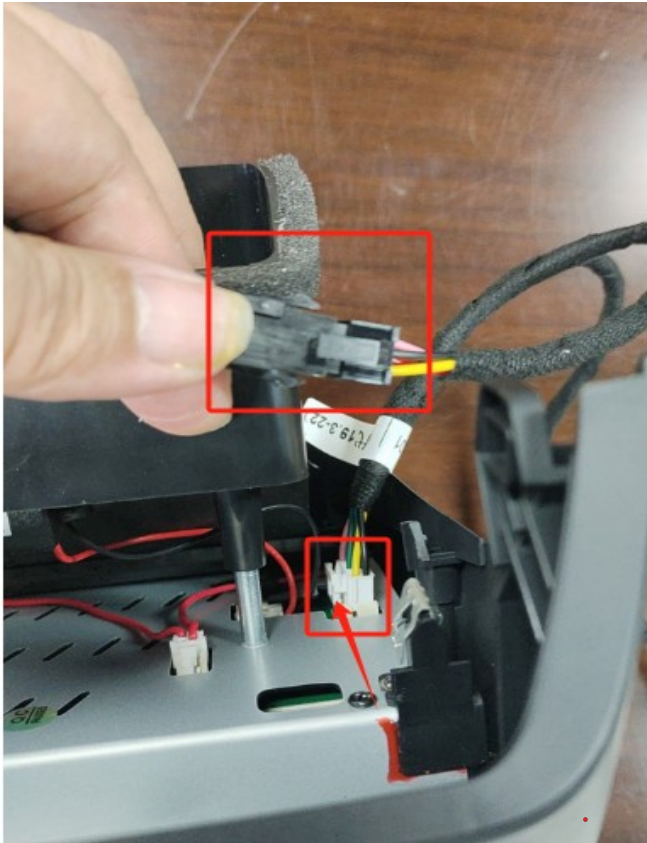


The host power supply socket is paired with the male connector of the wire connector



Connect the main engine and line connector properly.





Turned on car 's screen power, and the power display is normal before starting to install the rear main unit



Align the installation of the rear host with the corresponding buckle position



Complete the entertainment system's installation



The system can control the car aircondition's wind blow speed



