




Angled Wireless Charger

Part#: RVSC-FF-00

INSTALLATION INSTRUCTIONS

PARTS/TOOLS NEEDED:

		
Angled Wireless Charger	Mounting Screws (Not Provided)	Power Drill

Safety/Installation Considerations

- Disconnect power before installing, adding or changing any component.
- To avoid a hazard to children, account for all parts and destroy all packing materials.
- *Electrical Specs:*
Input voltage: 9-15V DC | Max Input current: 1.8A | Max Input Power 15W | Charging Capacity: 5W/7W/10W (phone dependent)
- Wire leads to product must be appropriately sized to handle the max current.
- The charger has been designed to work with Qi compatible devices.
- The charger has been designed to charge and operate within the receiving device's thermal parameters. Low or high temperatures might cause the receiving device to change their charging behavior to regulate its temperature and preserve battery life. Typical temperature ranges are 5°C to 45°C (41°F to 113°F). When exceeding these operating temperatures, the phone and/or the charging device may temporarily stop charging to protect from overheating.
- The wireless charging module has been designed to be optimized with no case installed. If a thick phone case is added to the distance between the charger surface and the phone, it may cause the device to not charge or to temporarily shut down to protect from over-heating.
- Interior use only

Wireless Charging Best Practices

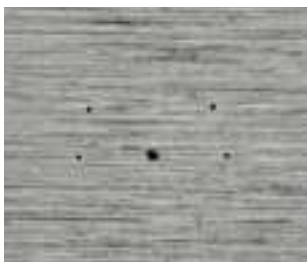
- Choose compatible cases specifically designed for wireless charging, made from non-ferrous (not containing iron or steel) materials
- Avoid metal near the charging surface which can reduce charging speed or cause overheating of the metal in the case
- Position devices properly by aligning the charging coil on your phone with the coil centered
- Watch for overheating: phone and charger may get warm while charging, but excessive heat can indicate improper charging or obstruction. Check for obstructions and remove devices immediately to dissipate heat
- All ITC chargers are equipped with thermal foldback features which will slow or stop charging if excessive heat or foreign objects are sensed



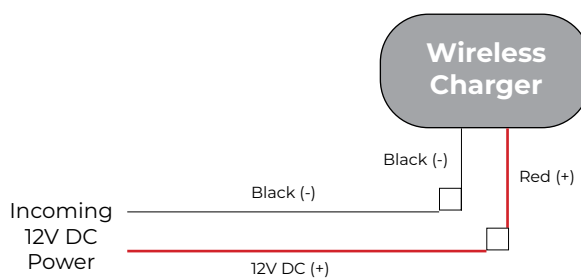
3030 Corporate Grove Dr.
Hudsonville, MI 49426
Phone: 616.396.1355
itc-us.com

For warranty information please visit www.itc-us.com/warranty-return-policy
DOC #: 710-00288 · Rev B · 08/13/25

1. Determine the installation location and mark the mounting holes using the charger as a guide. Pre-drill holes.



2. Wire the charger using the diagram below.



3. Attach the charger to the wall using #8 screws (not provided).



4. Remove adhesive tape from the back of the rubber pad and press the pad in place on the front of the charger. Make sure to push the tabs all the way into the holes.

